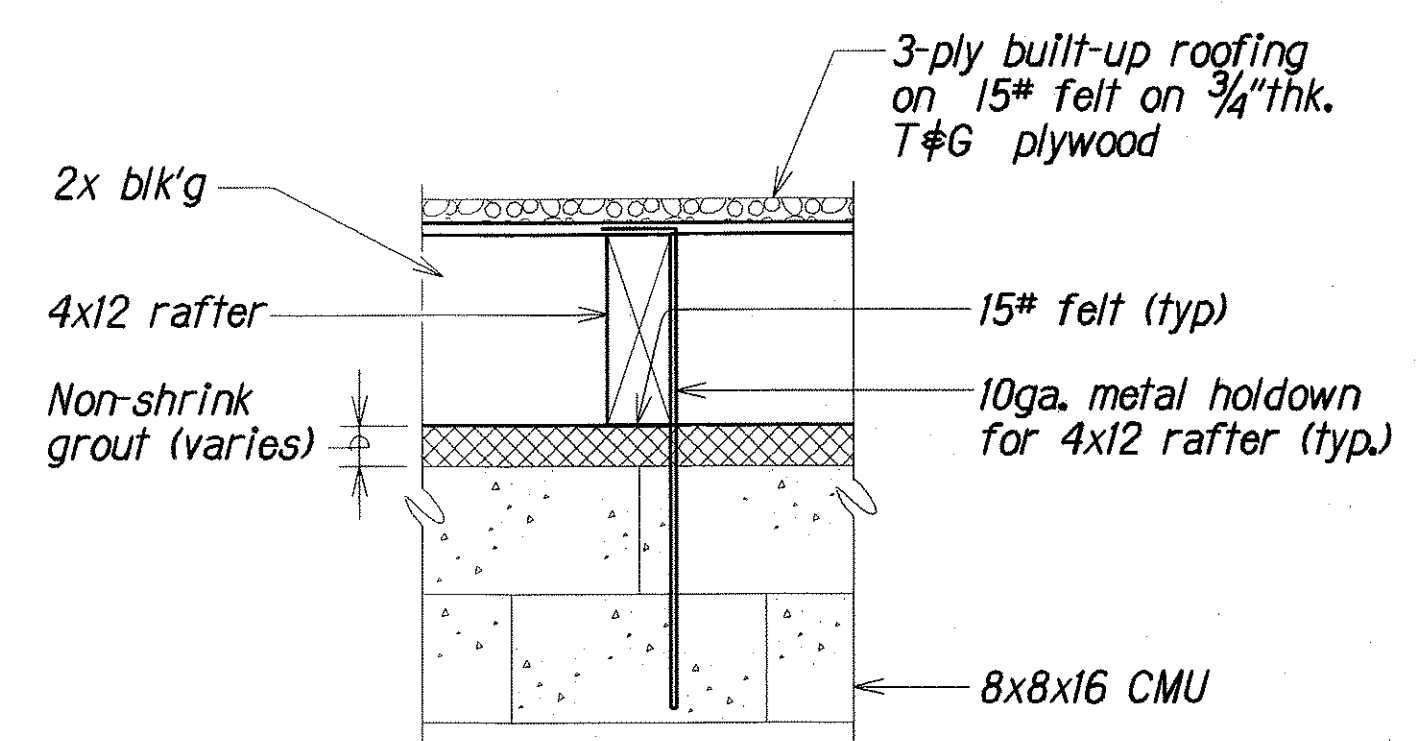
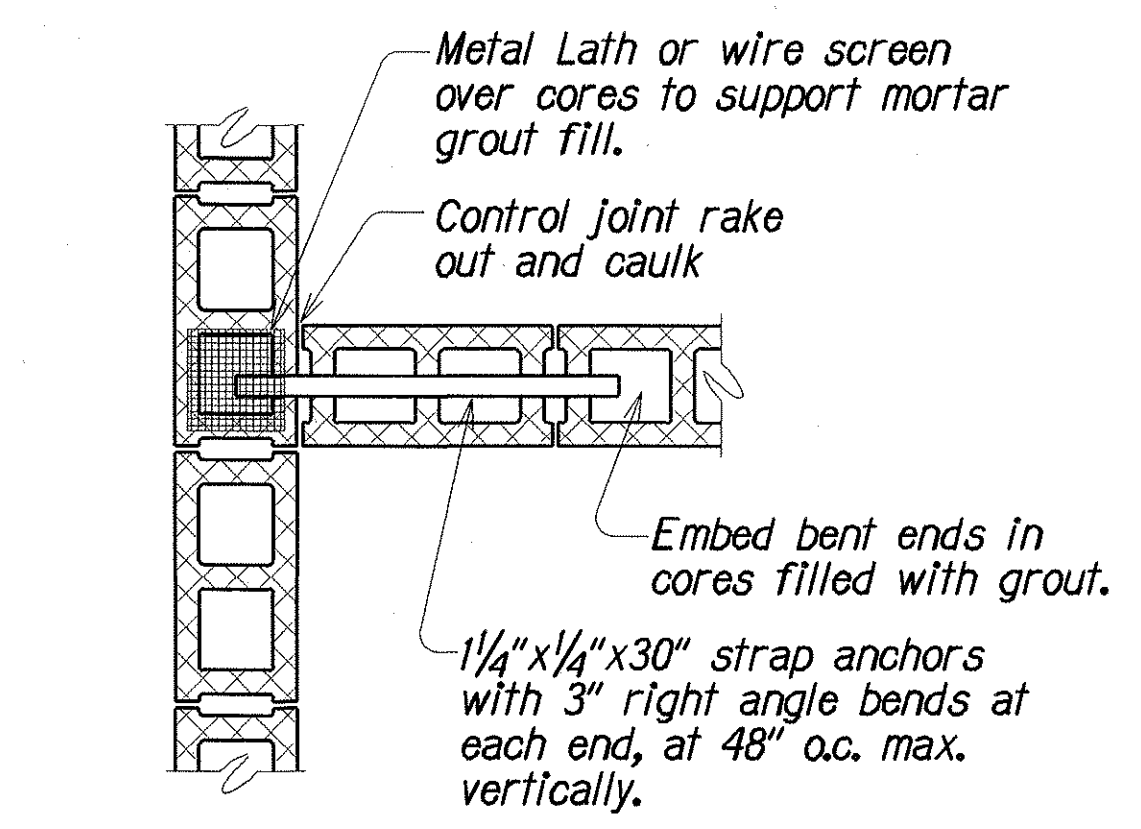


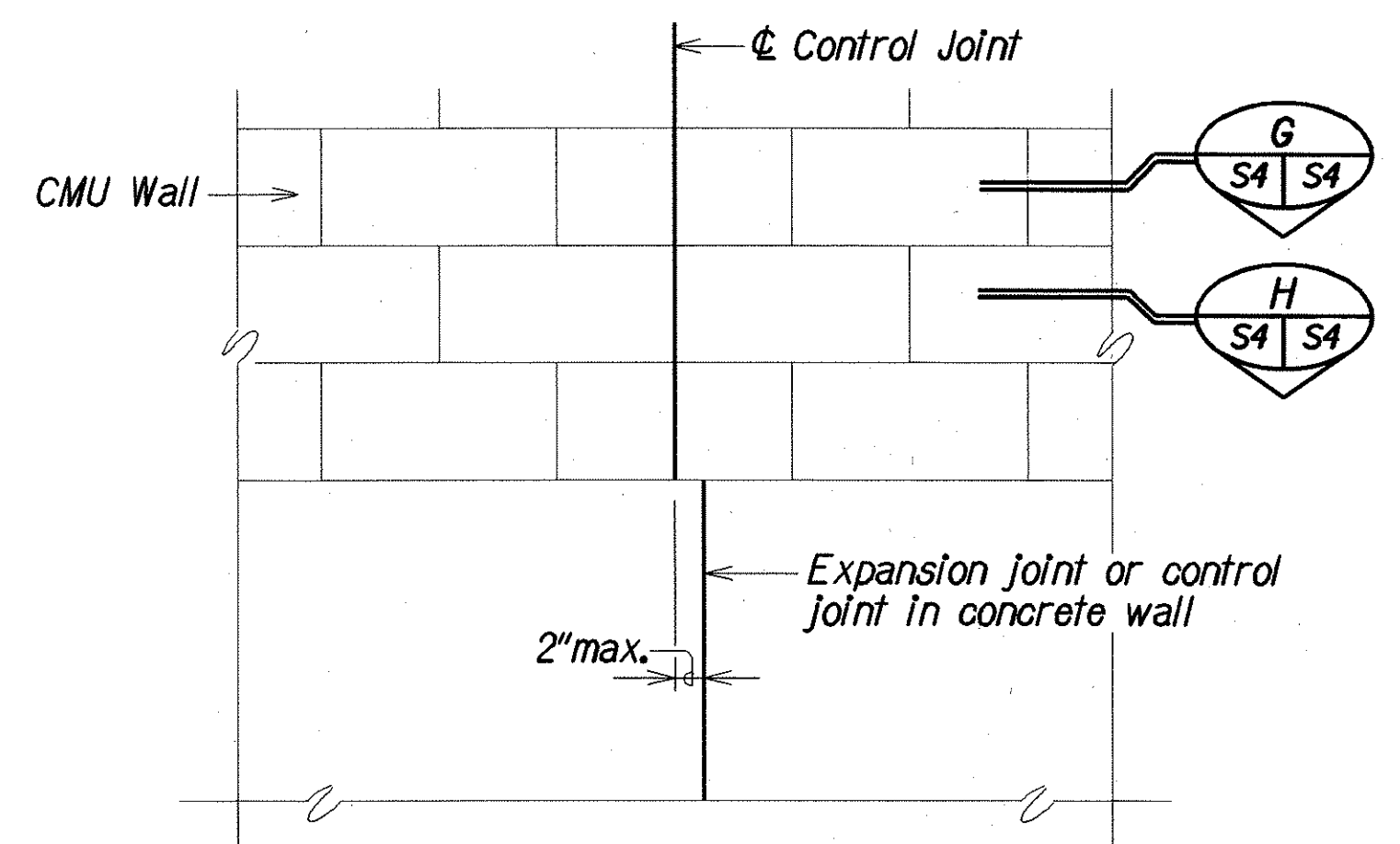
FED. ROAD DIST. NO.	STATE	PROJ. NO.	FISCAL YEAR	SHEET NO.	TOTAL SHEETS
HAWAII	HAW.	HWY-0-09-91	1997	5	7



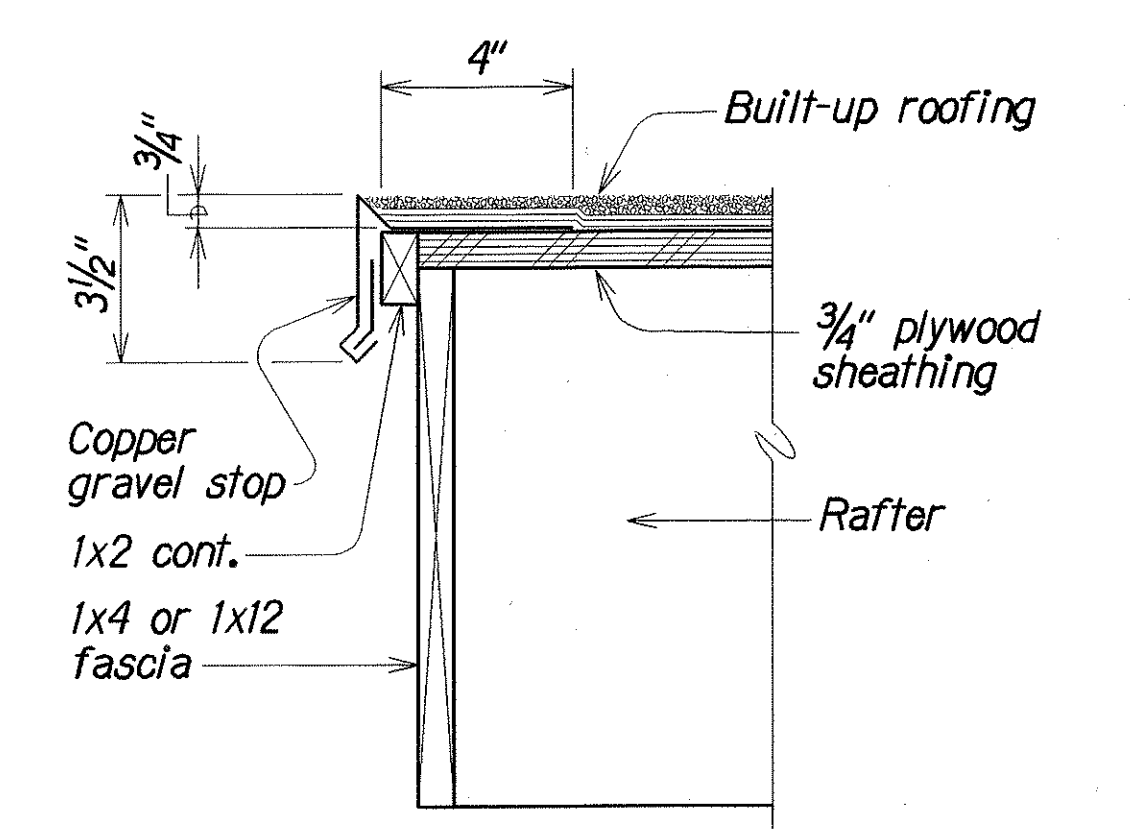
**DETAIL**  
**(4x RAFTER TO CMU WALL CONNECTION)**  
Not To Scale



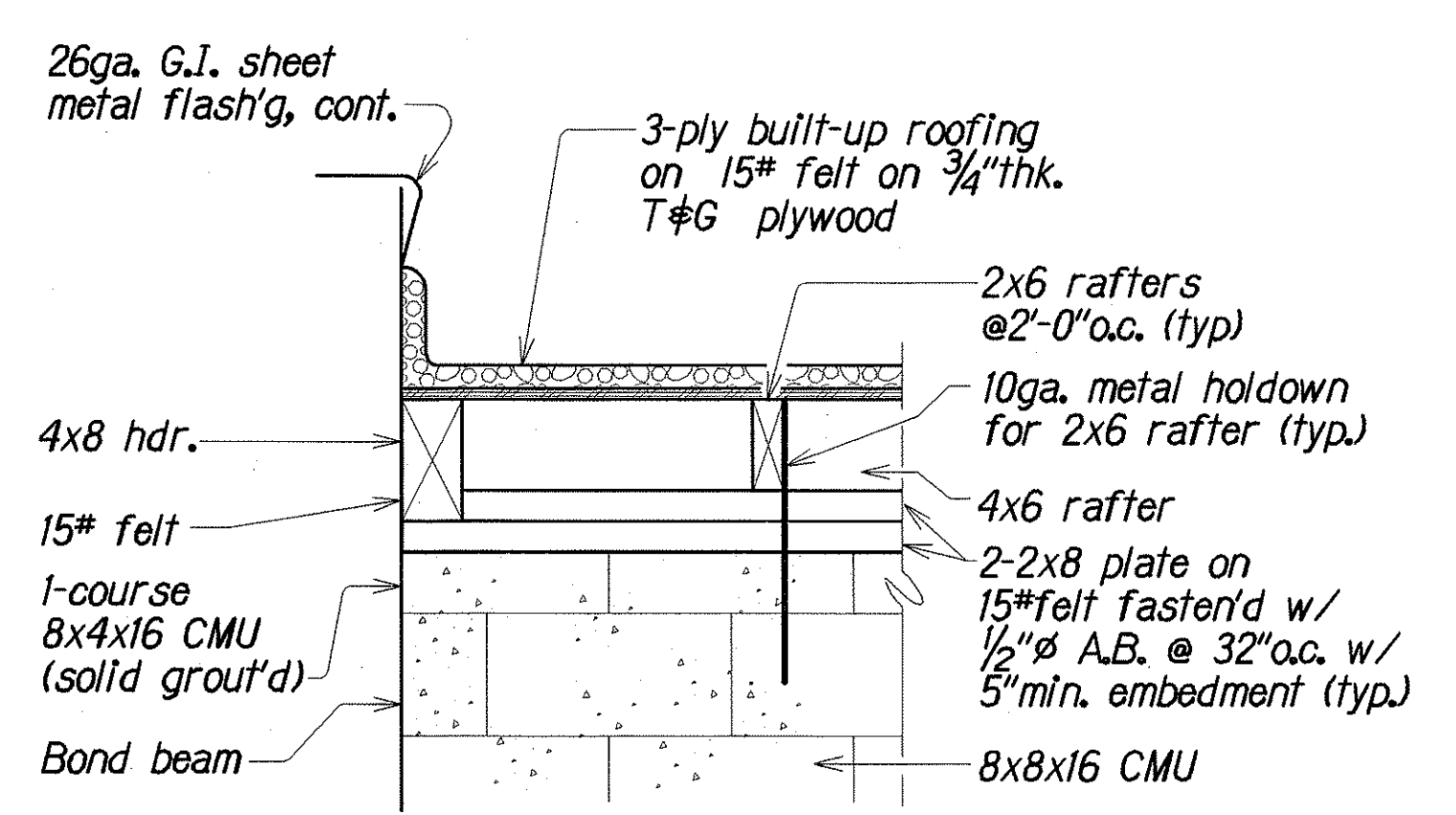
**DETAIL**  
**PLAN-WALL INTERSECTION BETWEEN SHEDS**  
Not To Scale



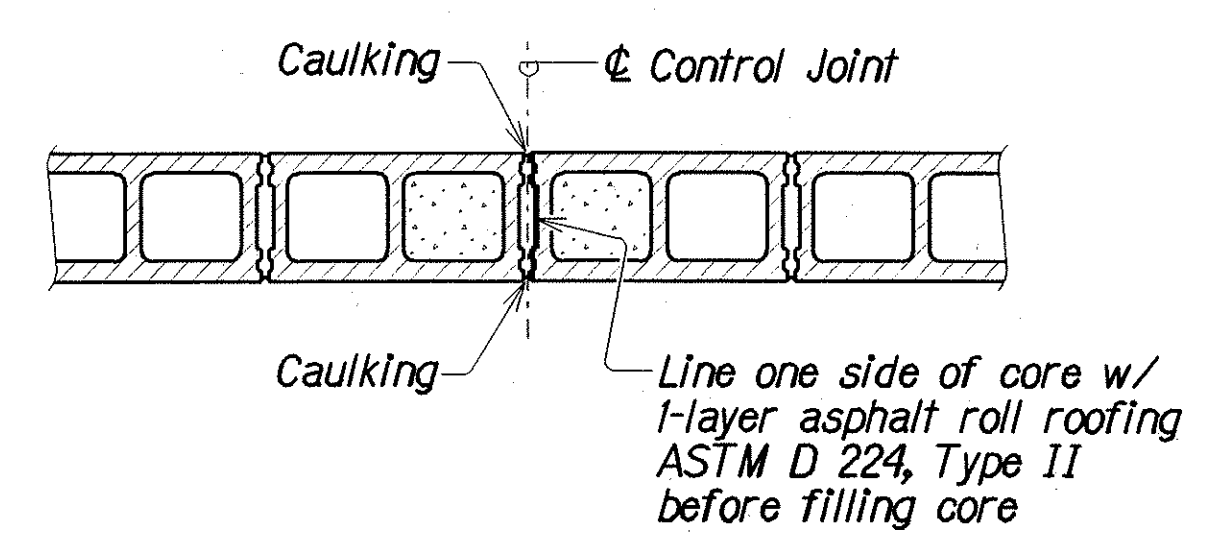
**DETAIL**  
**CMU CONTROL JOINT**  
Not To Scale



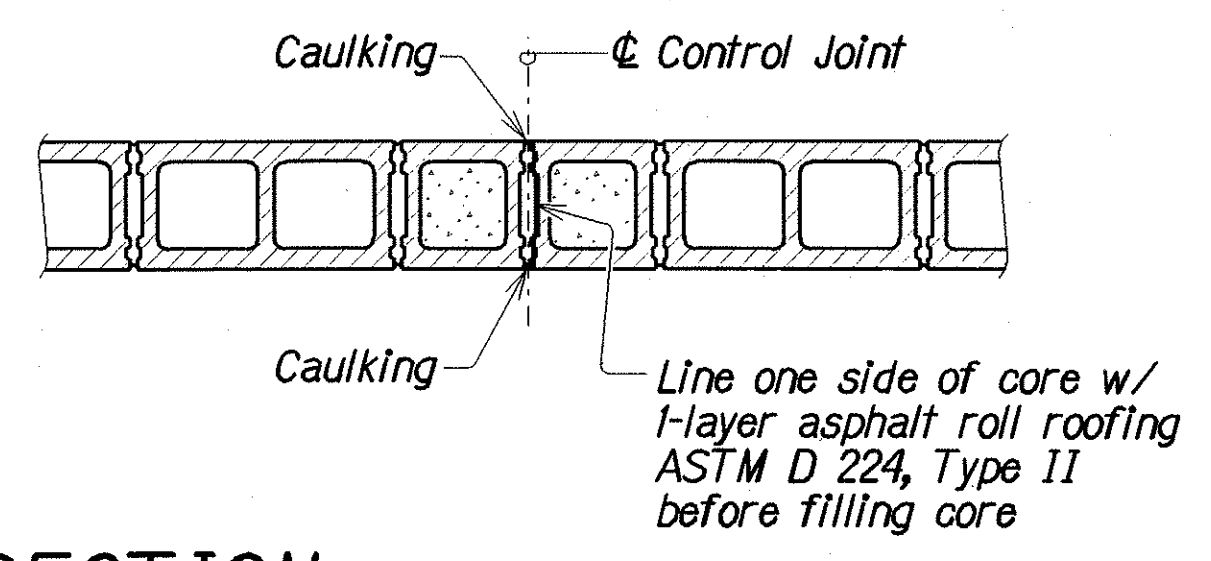
**DETAIL**  
**GRAVEL STOP AND FASCIA**  
Not To Scale



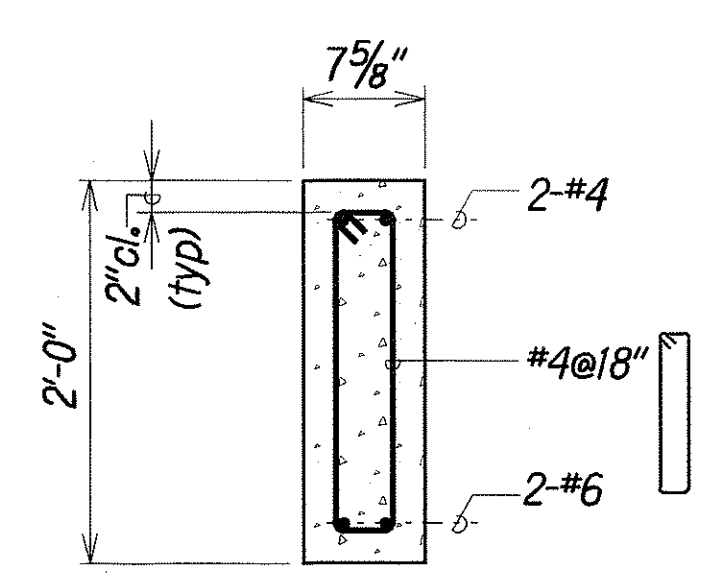
**DETAIL**  
**4x8 HEADER CONNECTION**  
Not To Scale



**SECTION**  
Not To Scale



**SECTION**  
**ALTERNATE COURSE**  
Not To Scale



**DETAIL**  
**LINTEL BEAM**  
Not To Scale

LEGEND FOR AS-BUILT POSTINGS	
	Squiggly line for as-built deletion
	Double line for as-built deletion
Roadway	Text for as-built posting

STATE OF HAWAII  
DEPARTMENT OF TRANSPORTATION  
HIGHWAYS DIVISION

**DETAILS**  
MATERIAL TESTING LAB  
CONSTRUCT HAZARDOUS WASTE STORAGE SHED  
Project No. HWY-0-09-91

Scale: As Noted  
Date: Mar, 1997

ORIGINAL PLAN	DESIGNED BY	DATE
NOTE BOOK	TRACED BY	MAR 1997
AS SHOWN	QUANTITIES BY	MAR 1997
	CHECKED BY	MAR 1997