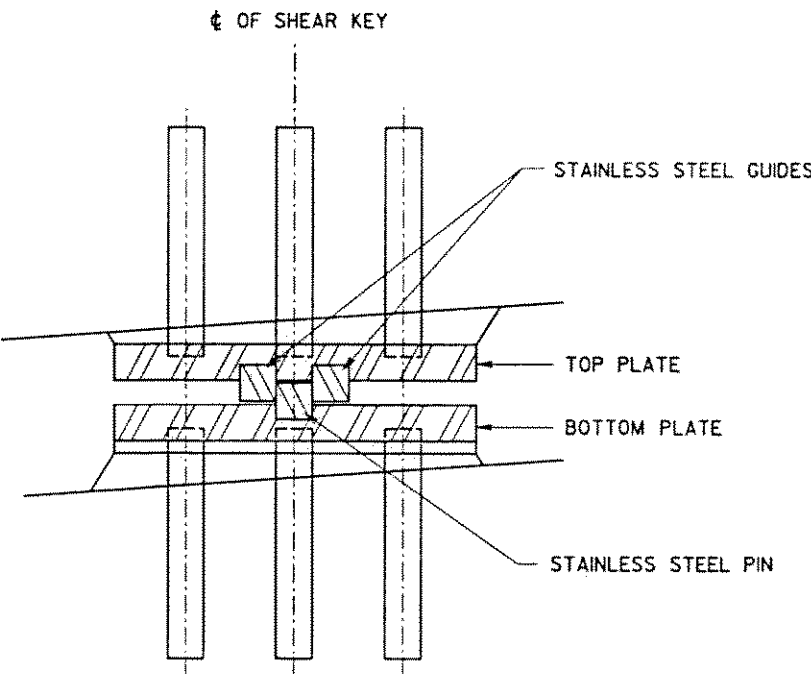
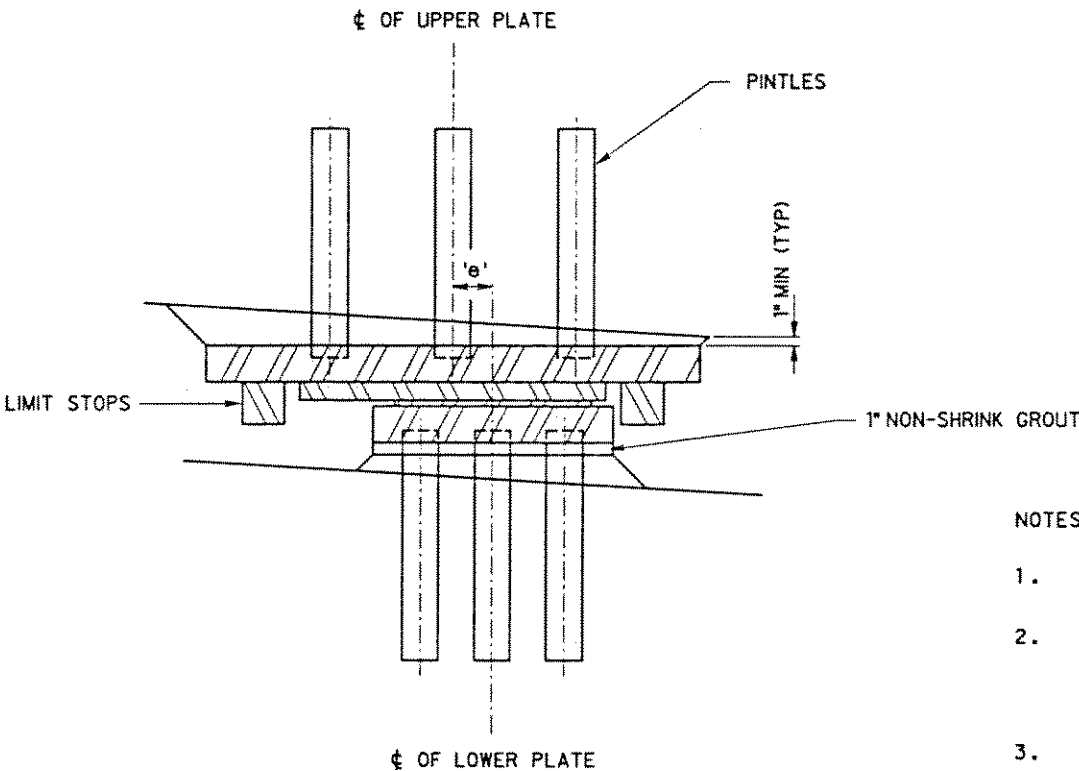


FED. ROAD DIST. NO.	STATE	FED. AID PROJ. NO.	FISCAL YEAR	SHEET NO.	TOTAL SHEETS
HAWAII	HAW.	I-H3-1(57)	1988		



TRANSVERSE ELEVATION  
SCALE: NONE



LONGITUDINAL ELEVATION  
SCALE: NONE

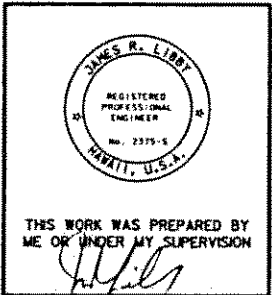
- NOTES:
1. THE LOWER PLATE SHALL BE GROUTED WITH NON-SHRINK GROUT TO THE SHEAR KEY SEAT AFTER THE SHEAR KEY HAS BEEN SET TO GRADE AND ELEVATION.
  2. THE BEARING HEIGHTS GIVEN REPRESENT THE TOTAL HEIGHT FROM THE BASE OF THE LOWER PLATE TO THE TOP OF THE UPPER PLATE AT THE CENTERLINE OF DEVICE. THE CONTRACTOR WILL VERIFY THESE DIMENSIONS TO REFLECT THE HEIGHT OF THE SHEAR KEY ACTUALLY SUPPLIED.
  3. THE INSTALLATION DISTANCE, *e*, IS POSITIVE FOR THE CENTERLINE OF THE LOWER PLATE UP STATION OF THE CENTERLINE OF THE UPPER PLATE.
  4. THE SHEAR KEY SHALL BE PLACED LEVEL AND ORIENTED AT THE GIVEN AZIMUTH. THE AZIMUTHS ARE GIVEN UP STATION BASED FROM TRUE SOUTH.
  5. THE SHEAR KEY SHALL HAVE LONGITUDINAL LIMIT STOPS WITH A CAPACITY OF 20% OF THE TOTAL DEAD LOAD REACTION ON THE PIER.
  6. THE SHEAR KEYS SHALL BE DESIGNED TO BE REPLACEABLE BY JACKING THE BRIDGE UP, PRYING THE UPPER AND LOWER PLATES FROM THE PINTLES AND EXTRACTING THE SHEAR KEY.

	LOCATION	LATERAL CAPACITY	TOTAL MOVEMENT	HEIGHT	INSTALLATION DISTANCE 'e'	AZIMUTH
INBOUND	PIER 4	1000 KIPS	7"	8"	-2½"	292°-33'-36"
	PIER 5	1000 KIPS	7"	8"	+2½"	270°-36'-7"
	PIER 8	1000 KIPS	7"	8"	-3½"	255°-16'-22"
	PIER 12	1000 KIPS	7"	8"	-3½"	234°-03'-54"
	PIER 13	1000 KIPS	7"	8"	+2½"	250°-22'-48"
	PIER 17	1000 KIPS	7"	8"	+2"	288°-43'-41"
OUTBOUND	PIER 23	1000 KIPS	7"	8"	-2"	314°-26'-18"
	PIER 4	1000 KIPS	7"	8"	-2½"	292°-23'-5"
	PIER 5	1000 KIPS	7"	8"	+2½"	270°-39'-54"
	PIER 8	1000 KIPS	7"	8"	-3½"	254°-40'-40"
	PIER 12	1000 KIPS	7"	8"	-3½"	234°-0'-57"
	PIER 13	1000 KIPS	7"	8"	+2½"	250°-27'-16"
	PIER 17	1000 KIPS	7"	8"	+2"	288°-41'-54"
	PIER 23	1000 KIPS	7"	8"	-2"	314°-58'-25"

REVIEWED BY	DATE
DRAWN BY	
CHECKED BY	
DESIGNED BY	
NOTED BY	
QUANTITY BY	
CHECKED BY	
ORIGINAL PLAN	
NOTE BOOK	
DATE	

06/21/91 UPDATED DRAWING.  
05/03/91 UPDATED DRAWING.  
04/01/91 UPDATED DRAWING.  
02/06/91 UPDATED DRAWING.  
10/04/90 UPDATED DRAWING.

DATE	REVISION
J. MULLER INTERNATIONAL	Libby Engineers



STATE OF HAWAII  
DEPARTMENT OF TRANSPORTATION  
HIGHWAYS DIVISION

SHEAR KEY SCHEDULE

INTERSTATE ROUTE H-3  
F.A.I. PROJECT No. I-H3-1(57)  
F.A.I. PROJECT No. I-H3-1(58)  
SCALE : AS NOTED      DATE : JUN. 1990.

SHEET No. SK1 OF      SHEETS