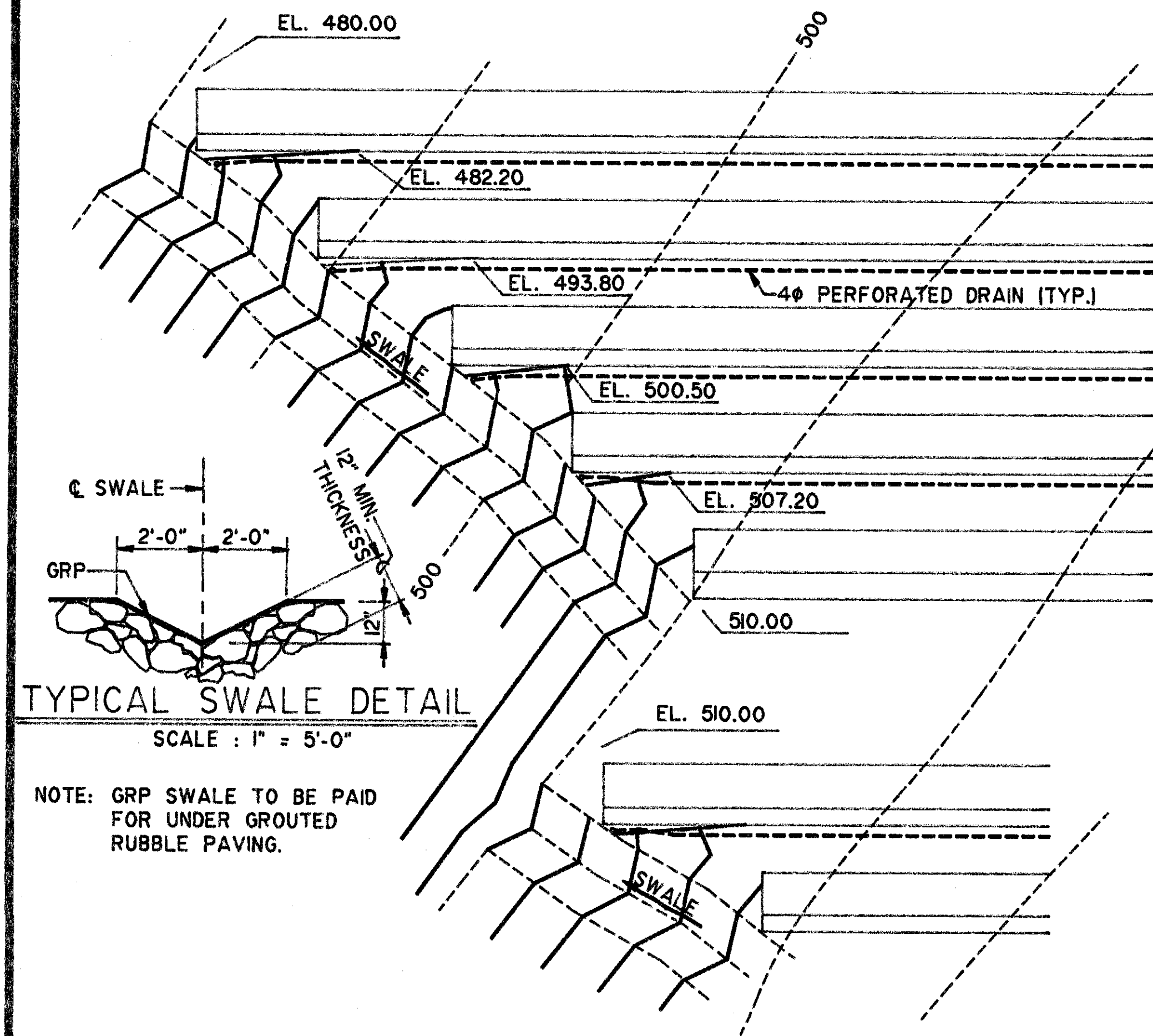


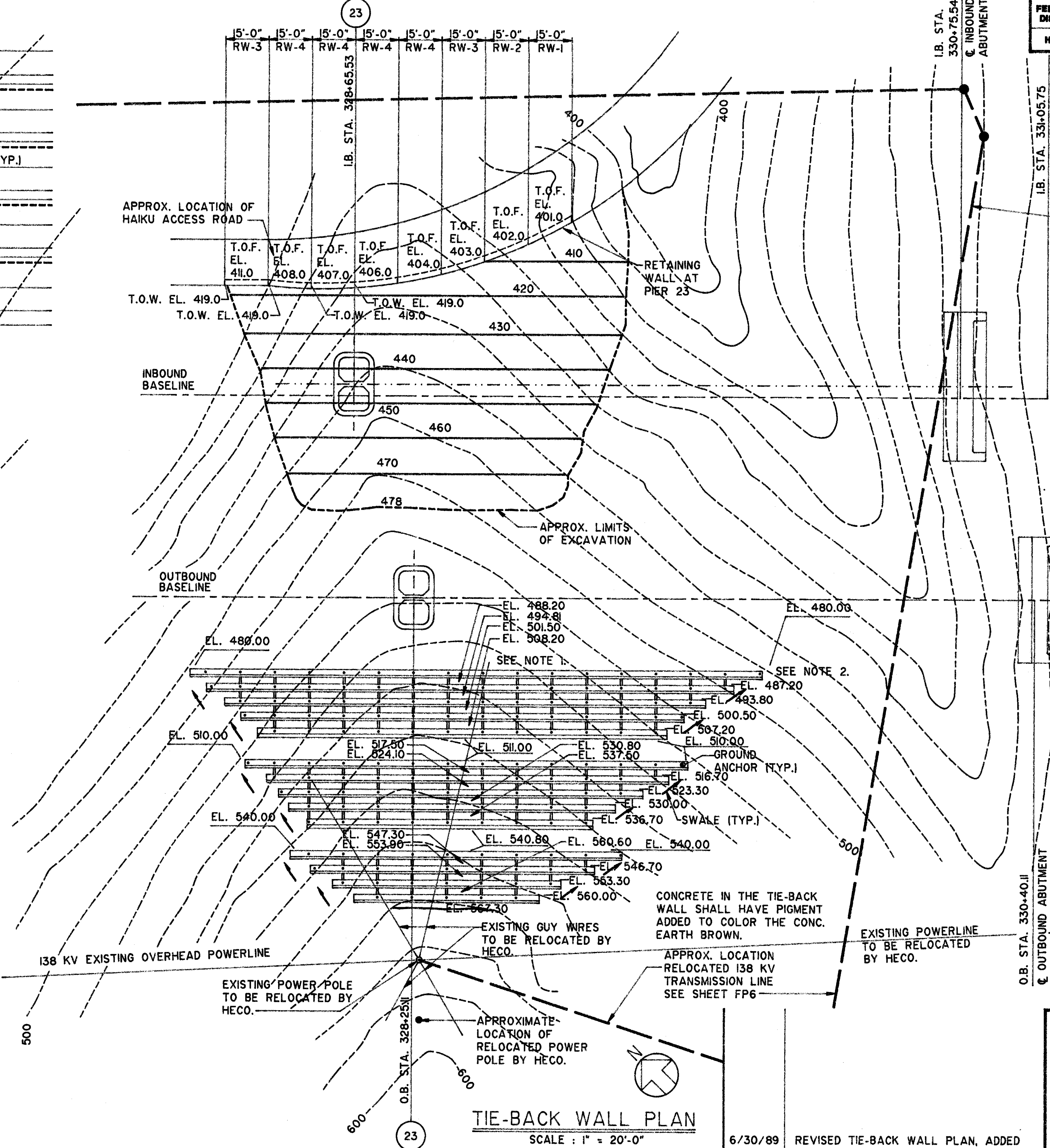
FED. ROAD DIST. NO.	STATE	FED. AID PROJ. NO.	FISCAL YEAR	SHEET NO.	TOTAL SHEETS
HAWAII	HAW.	I-H3-1 (57)	1988	39	274



TYPICAL END GRADING DETAIL
SCALE : 1" = 5'-0"

GENERAL NOTES:

- ELEVATION SHOWN AT CENTER OF WALL IS TOP OF WALL ELEVATION FOR ENTIRE WALL LENGTH AND SOIL FINISH GRADE AT CENTER OF PLANTER LENGTH.
- ELEVATION SHOWN AT END OF PLANTER IS SOIL FINISH GRADE FOR BOTH ENDS.
- WORK SHALL BE PERFORMED AND COORDINATED WITH HAWAIIAN ELECTRIC COMPANY, (HECO) SO AS NOT TO AFFECT THEIR FACILITIES. THE HECO 138 KV TRANSMISSION LINE IS TO BE TEMPORARILY RELOCATED. (SEE SHEET FP6) THE TEMPORARY RELOCATION IS TO ALLOW CONSTRUCTION OF THE VIADUCT BENEATH THE CURRENT 138 KV TRANSMISSION LINE ALIGNMENT. THE TEMPORARY RELOCATION IS SCHEDULED FOR DECEMBER 1989. AT SUCH A TIME WHEN THE ENGINEER HAS DETERMINED THAT WORK WILL NOT AFFECT THE 138 KV TRANSMISSION LINE, HECO WILL REINSTALL THE TRANSMISSION LINE BACK TO THE EXISTING PERMANENT ALIGNMENT. CONSTRUCTION OF THE TIE-BACK WALL WILL NOT BE ALLOWED UNTIL THE 138 KV TRANSMISSION LINE HAS BEEN REPLACED TO IT'S ORIGINAL PERMANENT ALIGNMENT. THE 138 KV TRANSMISSION LINE IS AN ESSENTIAL FACILITY AND ALL WORK AFFECTING THE LINE SHALL BE COORDINATED BY THE CONTRACTOR WITH HECO.
- FOR EXCAVATION OF PIER 23 O.B., PROVIDE TEMPORARY TIE BACK OR SIMILAR SHORING METHOD TO STABILIZE THE WORK. PERFORM CONSTRUCTION SO AS NOT TO CAUSE DAMAGE TO THE TIE BACK WALL. SUBMIT TEMPORARY SHORING DETAILS AND CALCULATIONS TO THE ENGINEER FOR REVIEW AND APPROVAL PRIOR TO BEGINNING EXCAVATION WORK.
- CONSTRUCTION OF TIE BACK WALL IS ASSUMED TO START FROM THE TOP. THE CONTRACTOR SHALL BE RESPONSIBLE FOR DETERMINING THE ACTUAL SEQUENCE OF WORK.



TIE-BACK WALL PLAN
SCALE : 1" = 20'-0"

6/30/89
REVISED TIE-BACK WALL PLAN, ADDED NOTES TO TYP. SWALE DET. AND ADDED NOTE 5. TO GENERAL NOTES.

THIS WORK WAS PREPARED BY ME OR UNDER MY SUPERVISION

Roscoe O. Ford

STATE OF HAWAII
DEPARTMENT OF TRANSPORTATION
HIGHWAYS DIVISION

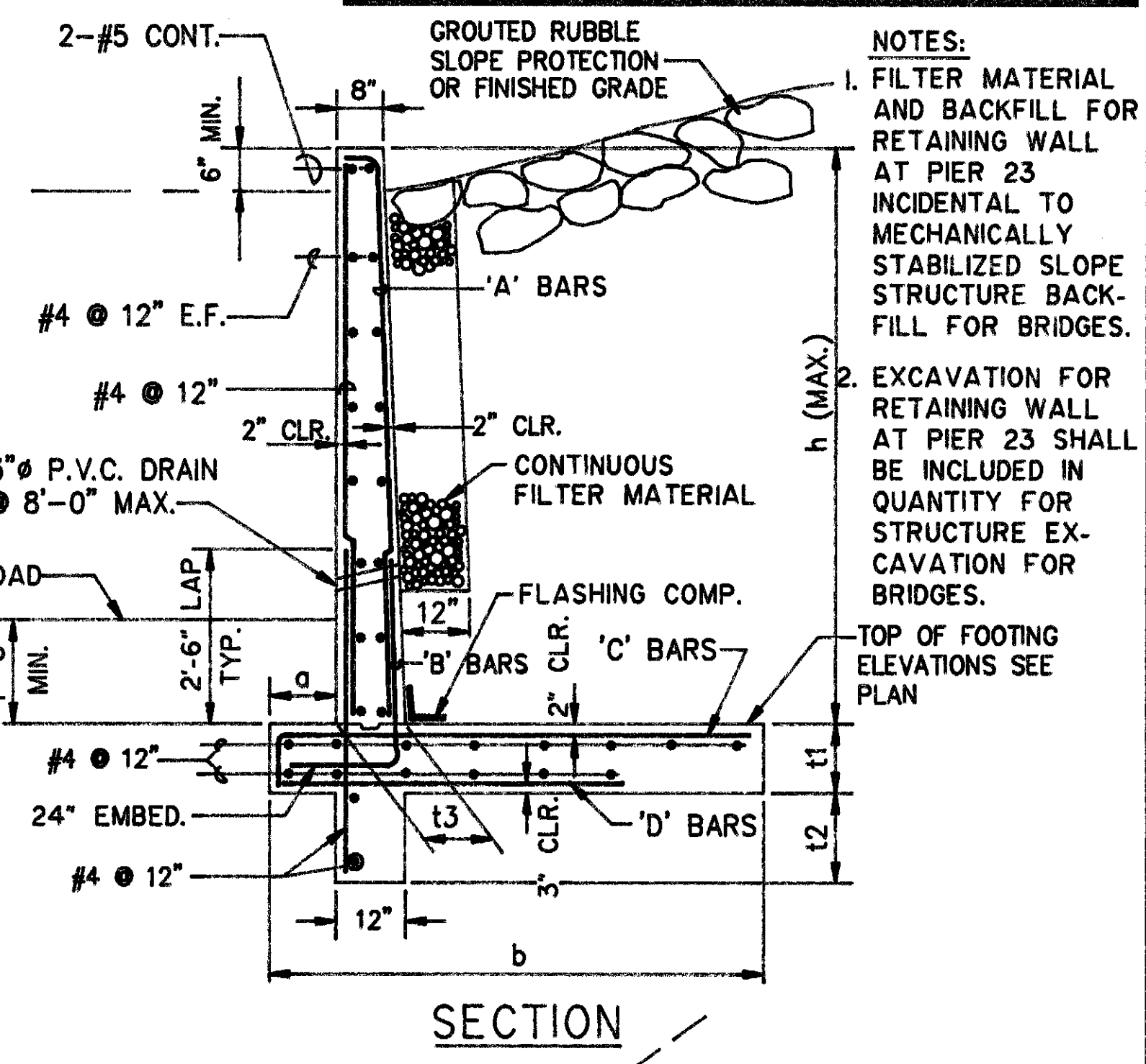
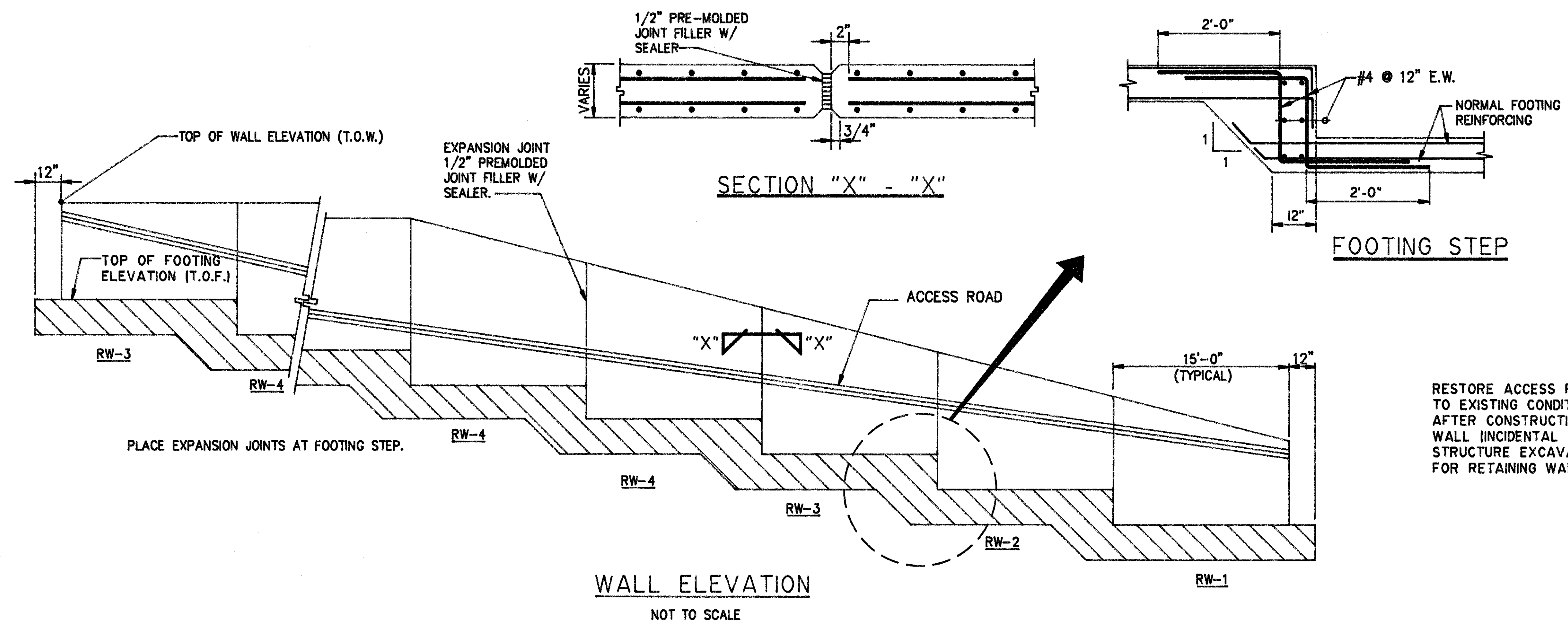
TIE-BACK WALL PLAN

INTERSTATE ROUTE H-3
F.A.I. PROJECT NO. I-H3-1 (57)
F.A.I. PROJECT NO. I-H3-1 (58)

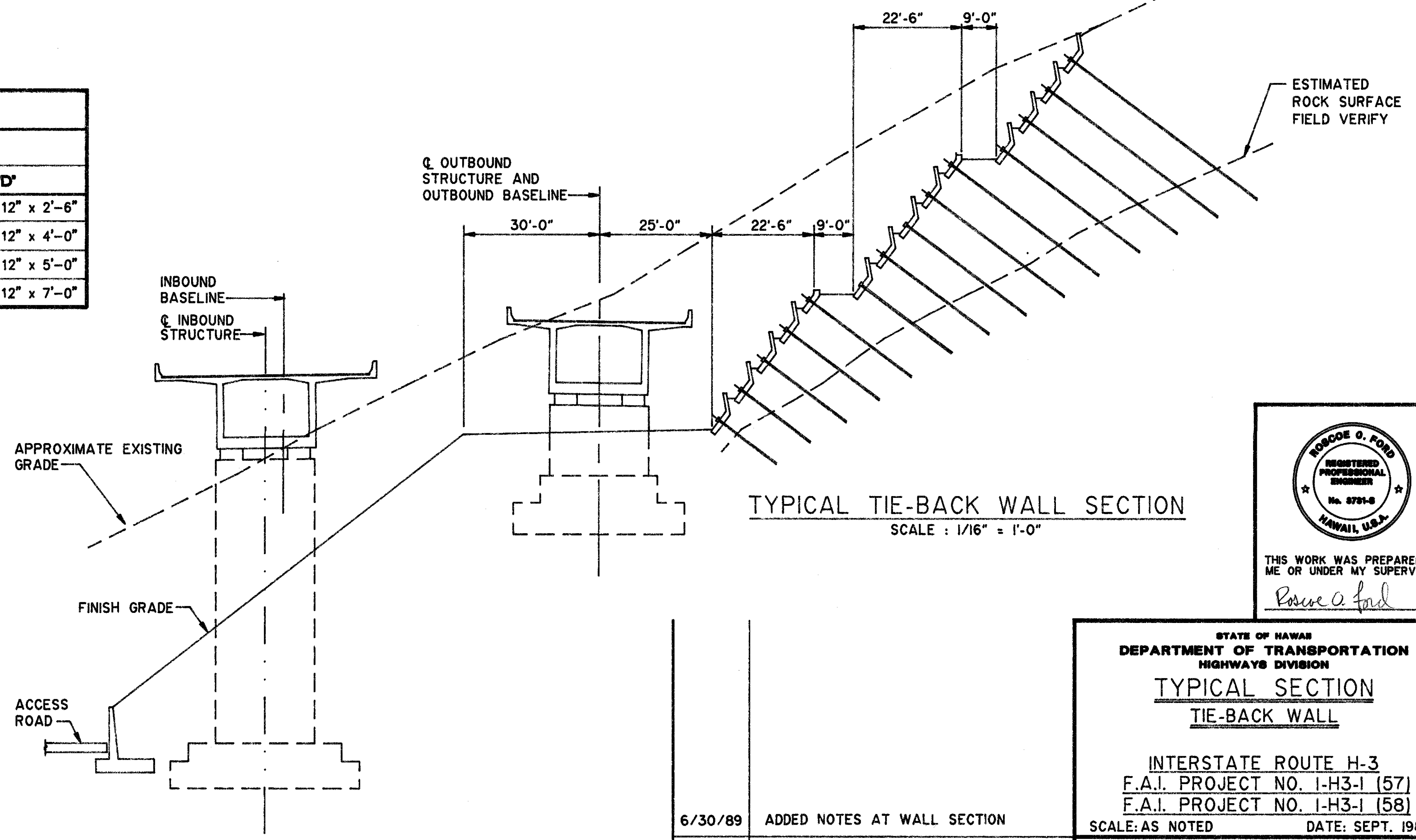
SCALE: AS NOTED
DATE: SEPT. 1988

SHEET No. 181 OF 3 SHEETS

FED. ROAD DIST. NO.	STATE	FED. AID PROJ. NO.	FISCAL YEAR	SHEET NO.	TOTAL SHEETS
HAWAII	HAW.	I-H3-1 (57)	1988	40	274



RETAINING WALL SCHEDULE										
TYPE	DIMENSIONS						REINFORCING			
	h	a	b	t1	t2	t3	'A'	'B'	'C'	'D'
RW-1	4 (ft)	6"	3'-0"	12"	0"	8"	#4 @ 12" O.C.	#4 @ 12" O.C. x 4'-0"	#4 @ 12" O.C.	#4 @ 12" x 2'-6"
RW-2	7 (ft)	6"	5'-6"	12"	12"	11.5"	#5 @ 12" O.C.	#5 @ 12" O.C. x 4'-6"	#6 @ 6" O.C.	#4 @ 12" x 4'-0"
RW-3	10 (ft)	12"	7'-0"	18"	18"	13.0"	#5 @ 12" O.C.	#6 @ 6" O.C. x 7'-0"	#6 @ 6" O.C.	#4 @ 12" x 5'-0"
RW-4	14 (ft)	12"	9'-6"	18"	24"	15.0"	#5 @ 12" O.C.	#8 @ 6" O.C. x 9'-0"	#8 @ 6" O.C.	#4 @ 12" x 7'-0"



SURVEY PLOTTED BY	DATE
DRAWN BY	
DESIGNED BY	
QUANTITIES BY	
CHECKED BY	
ORIGINAL PLAN	
NOTEBOOK	
No.	

6/30/89	ADDED NOTES AT WALL SECTION
DATE	REVISION

THIS WORK WAS PREPARED BY ME OR UNDER MY SUPERVISION

Roscoe O. Ford

STATE OF HAWAII
DEPARTMENT OF TRANSPORTATION
HIGHWAYS DIVISION

**TYPICAL SECTION
TIE-BACK WALL**

INTERSTATE ROUTE H-3
F.A.I. PROJECT NO. I-H3-1 (57)
F.A.I. PROJECT NO. I-H3-1 (58)

SCALE: AS NOTED DATE: SEPT. 1988

SHEET No. T82 OF 3 SHEETS

ADD. 40

