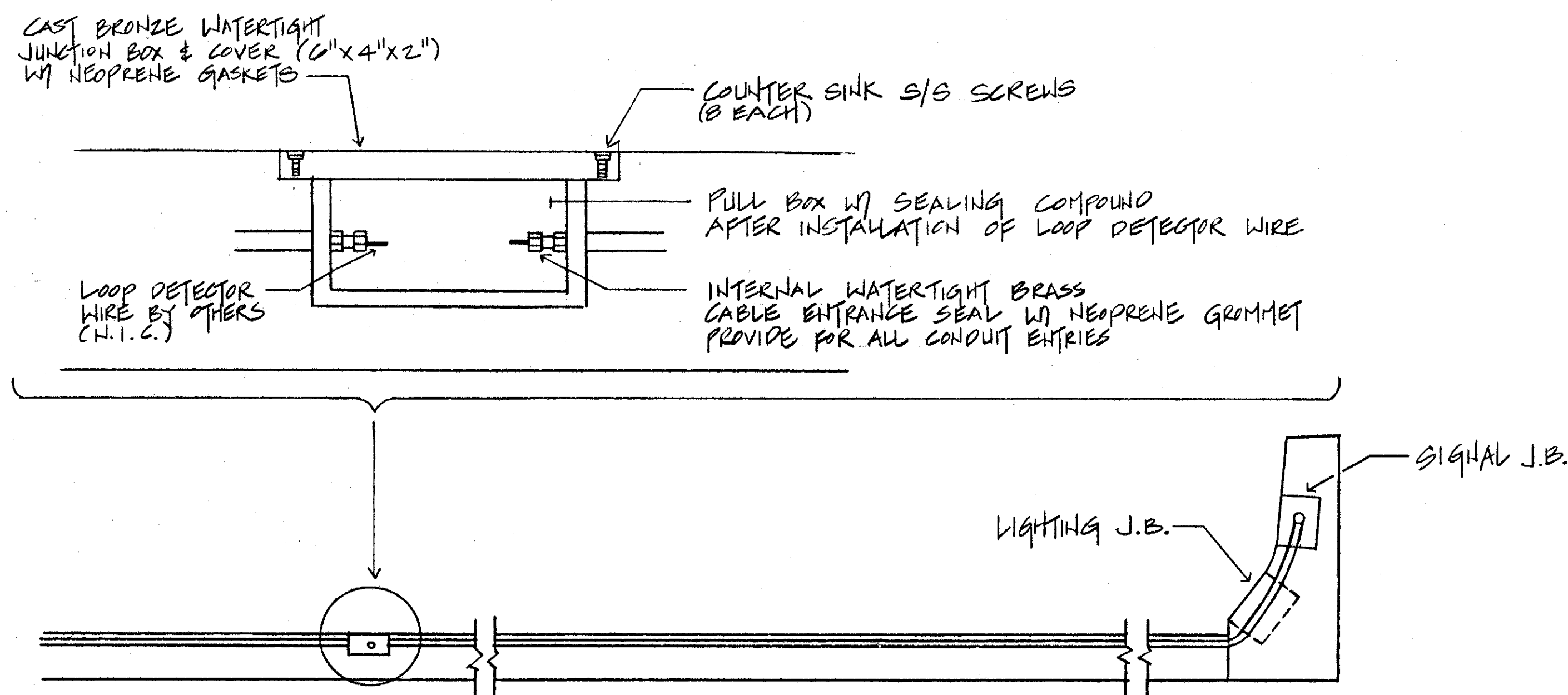


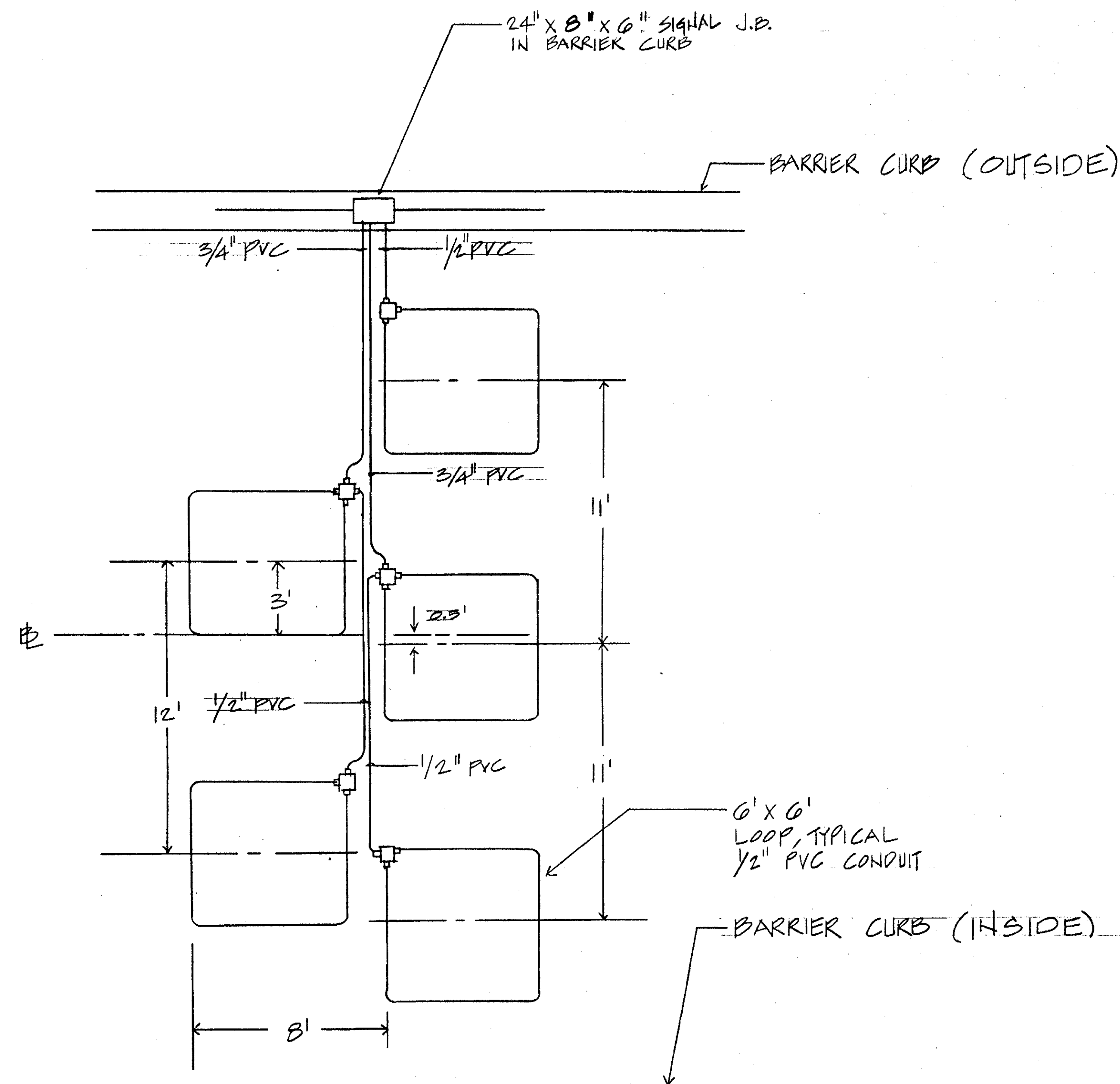




FED. ROAD DIST. NO.	STATE	FED. AID PROJ. NO.	FISCAL YEAR	SHEET NO.	TOTAL SHEETS
HAWAII	HAW.	I-H3-1(51)	1988	264	274



SECTION OF DETECTOR LOOP DETAIL  
N.T.S.



TYPICAL DETECTOR LOOP DETAIL  
N.T.S.

ORIGINAL PLAN	DATE
DRAWN BY	
DESIGNED BY	
QUANTITIES BY	
CHECKED BY	
NO.	



THIS WORK WAS PREPARED BY  
ME OR UNDER MY SUPERVISION.  
N. D. G.  
NAKAMURA, OYAMA & ASSOC., INC.  
CONSULTING ENGINEERS

STATE OF HAWAII  
DEPARTMENT OF TRANSPORTATION  
HIGHWAYS DIVISION

DETECTOR LOOP DETAIL

INTERSTATE ROUTE H-3  
F.A.I. PROJECT NO. I-H3-1(51)  
F.A.I. PROJECT NO. I-H3-1(50)  
SCALE: AS NOTED DATE: SEPT. 88

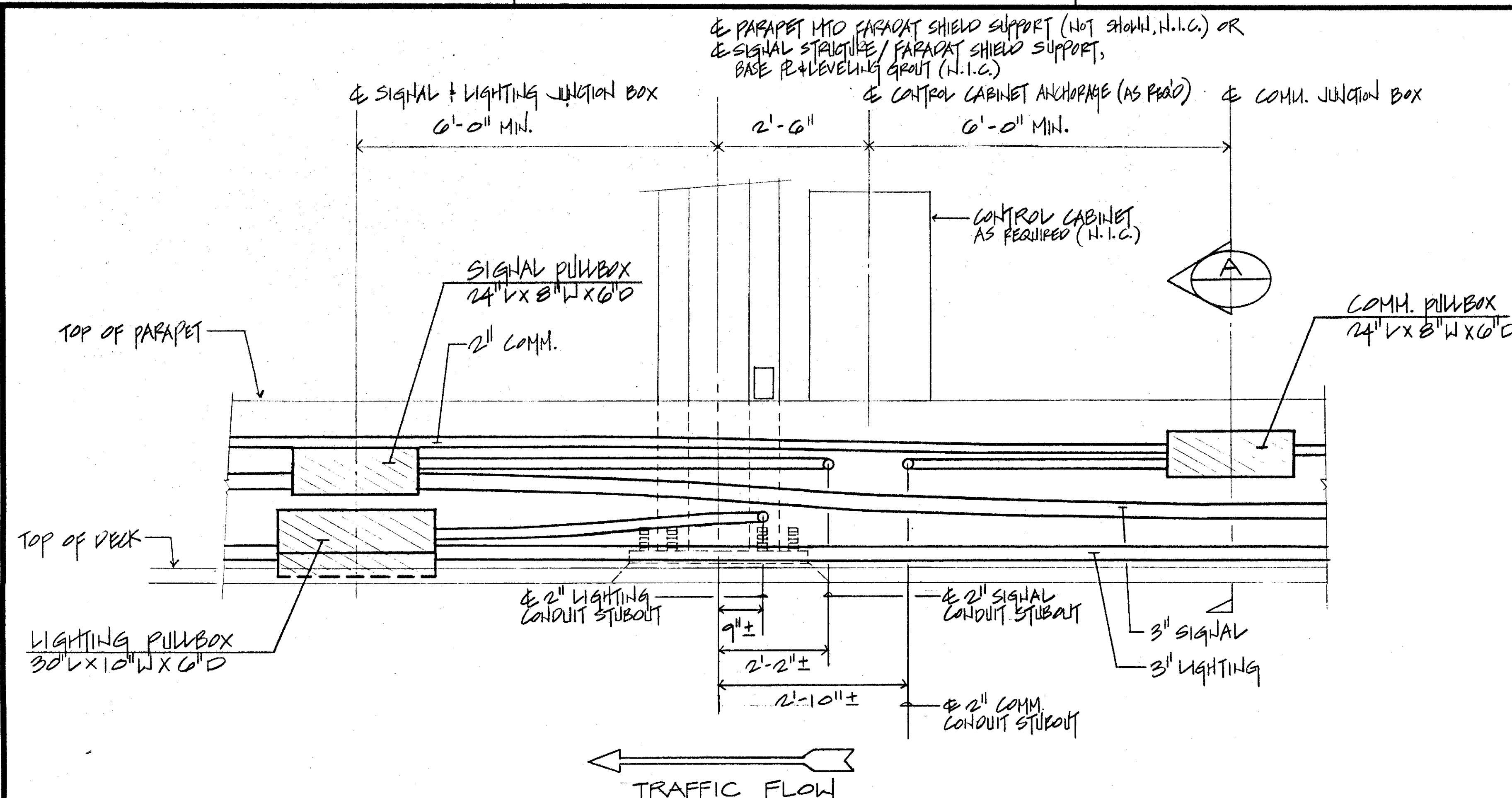
6-8-1990 REVISION ON DETECTOR LOOP DETAIL SECTION  
1-10-1989 REVISED DETAIL ON DETECTOR LOOP

DATE REVISION

SHEET NO. 264 OF 274 SHEETS

CO. ADD. 271

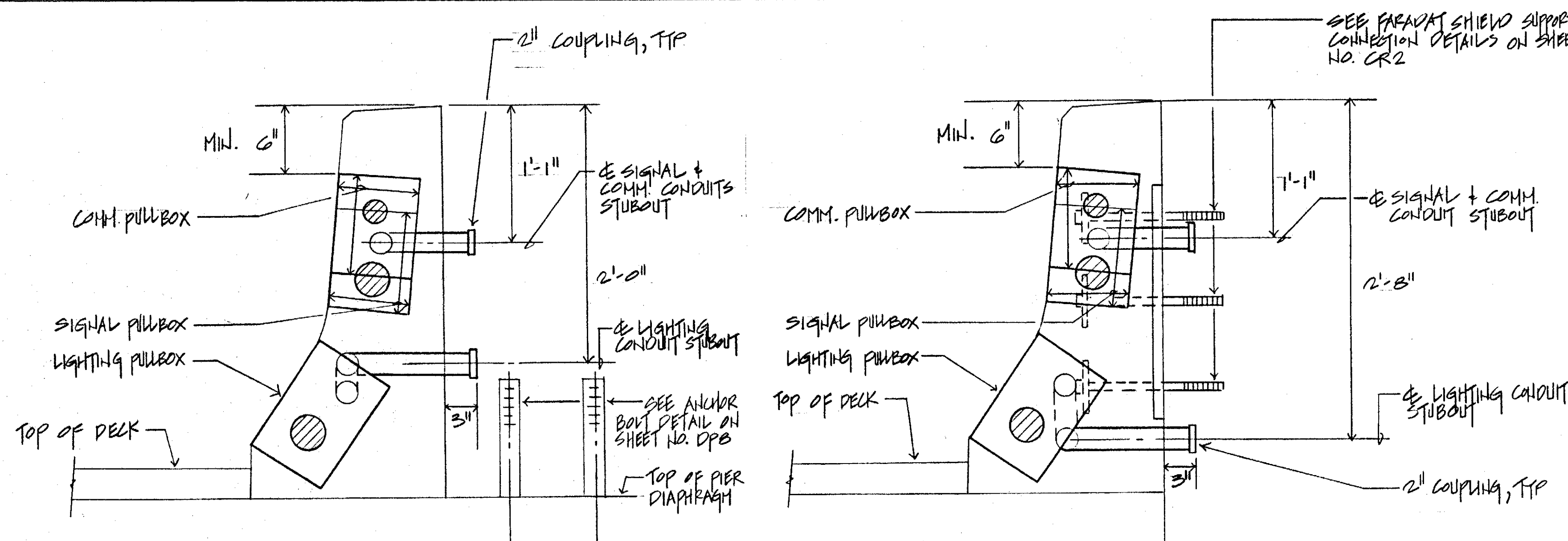
FED. ROAD DIST. NO.	STATE	FED. AID PROJ. NO.	FISCAL YEAR	SHEET NO.	TOTAL SHEETS
HAWAII	HAW.	I-H3-1(57)	1988	265	274



TYPICAL CONDUIT & PULLBOX PLACEMENT DETAILS  
FRONT ELEVATION  
SCALE: 3/4" = 1'-0"

# NOTES:

1. TYPICAL DETAIL AS SHOWN FOR & STRUCTURE/PARAPET SHIELD SUPPORT AT 1B STA. 279+45, 287+85, 305+35 OR STA. 273+10, 310+85
2. FOR PARAPET-MOUNTED PARAPET SHIELD SUPPORTS, STUBOUT LIGHTING CONDUIT AT & SUPPORT. PROVIDE COMM. & SIGNAL CONDUIT STUBOUTS AS SHOWN (AS REQUIRED)
3. THE LOCATIONS OF CONDUITS SHOWN IN ELEVATION ARE APPROXIMATE. THE CONTRACTOR SHALL ADJUST THE LOCATIONS OF CONDUITS IN THE FIELD TO CLEAR REBARS, PULLBOXES, ANCHOR BOLTS, CONDUITS OR ANY OTHER OBSTRUCTIONS.
4. PULLBOXES SHALL BE WATERTIGHT, CAST METAL TYPE.
5. CAP CONDUIT STUBOUTS.
6. STAGGER SIGNAL JB FROM LIGHTING JB AS REQUIRED TO MINIMIZE BENDING OF CONDUIT AT CONDUIT CROSSING AT 1B STA. 273+05.53, 287+85.53, 290+75.53, 305+35.53, 311+05.53, 319+95.53, 328+65.53.



TYPE I  
FOR SIGNAL STRUCTURE/PARAPET SHIELD SUPPORT AT  
1B STA. 279+45, 287+85, 305+35  
OR STA. 273+10 & 310+85 (SEE NOTE 1)

TYPE II  
FOR PARAPET-MOUNTED PARAPET SHIELD SUPPORTS  
(SEE NOTE 2)

SECTION  
SCALE: 1/2" = 1'-0"  
E4, E5

6-09-1990 REVISED 1B STA. FOR TYPE I ELEVATION  
6-29-1990 REVISED 1B STA. FOR NOTES #1 & #6  
6-8-1990 ADDED DETAILS AT PULLBOXES ELEVATION

STATE OF HAWAII  
DEPARTMENT OF TRANSPORTATION  
HIGHWAYS DIVISION  
CONDUIT & PULLBOX PLACEMENT DETAILS  
INTERSTATE ROUTE H-3  
F.A.I. PROJECT NO. I-H3-1(57)  
P.A.I. PROJECT NO. I-H3-1(58)  
SCALE: AS NOTED DATE: SEPT. 88  
SHEET NO. 610 OF SHEETS

C.O. 2715-1