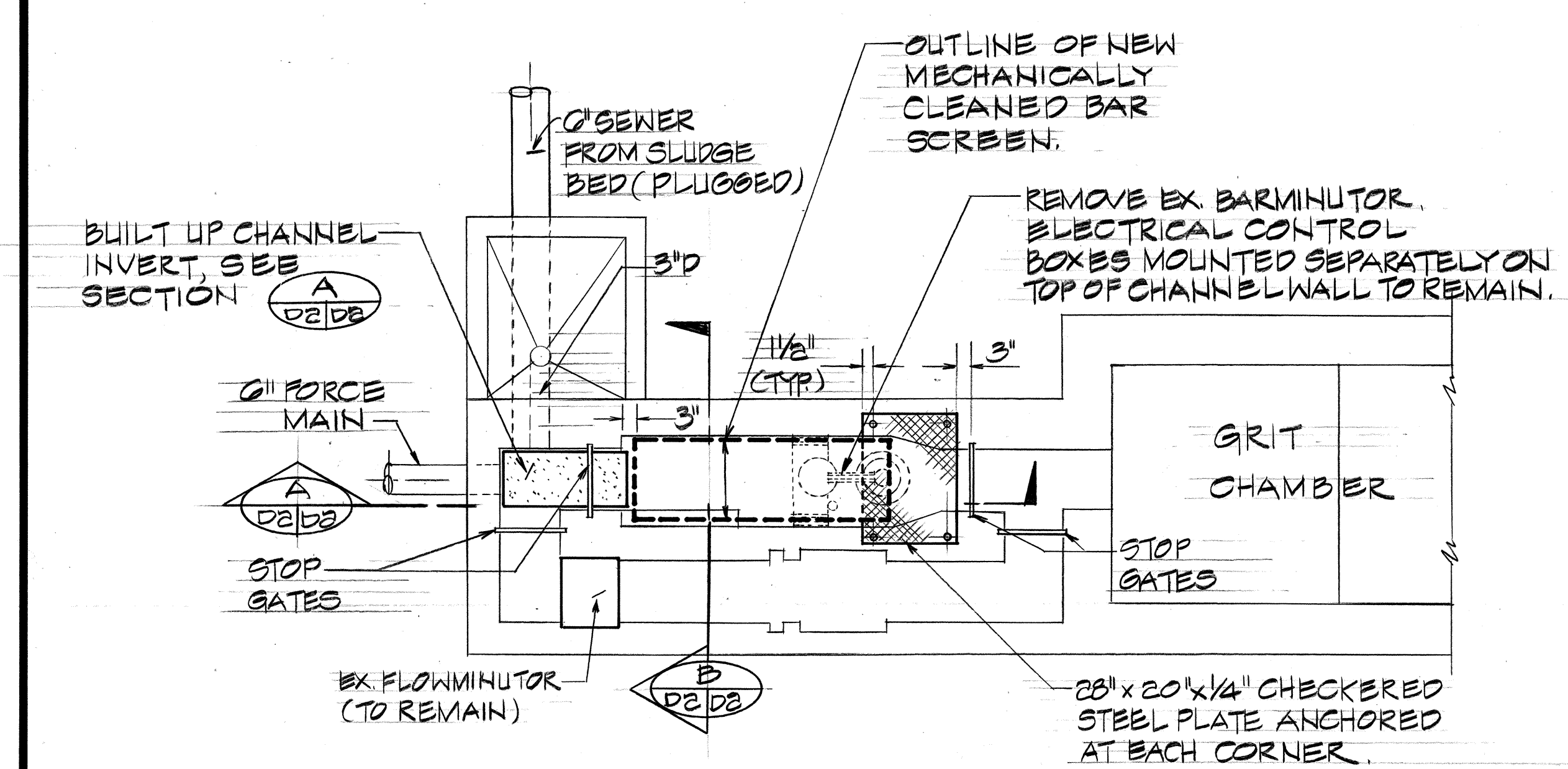
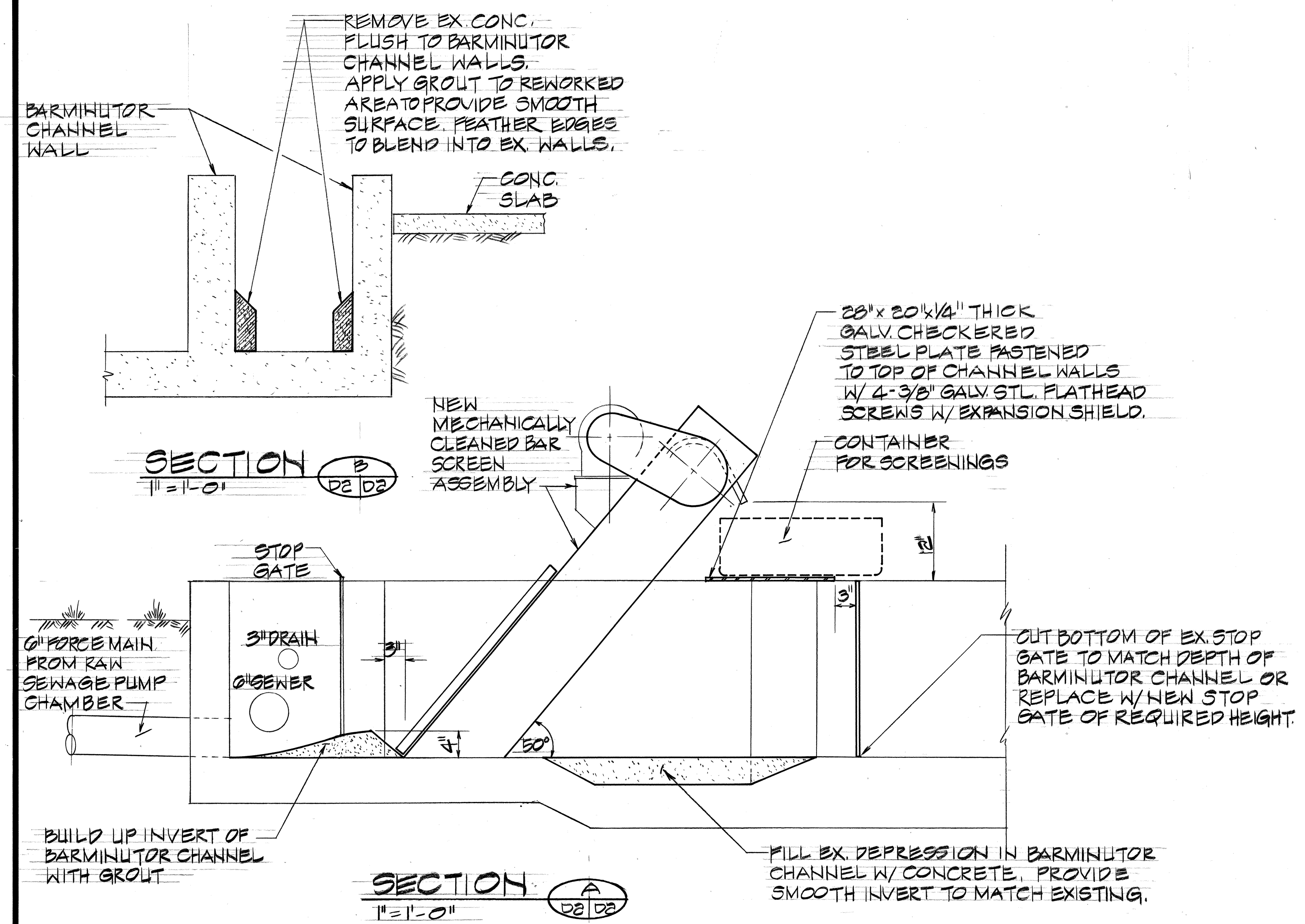
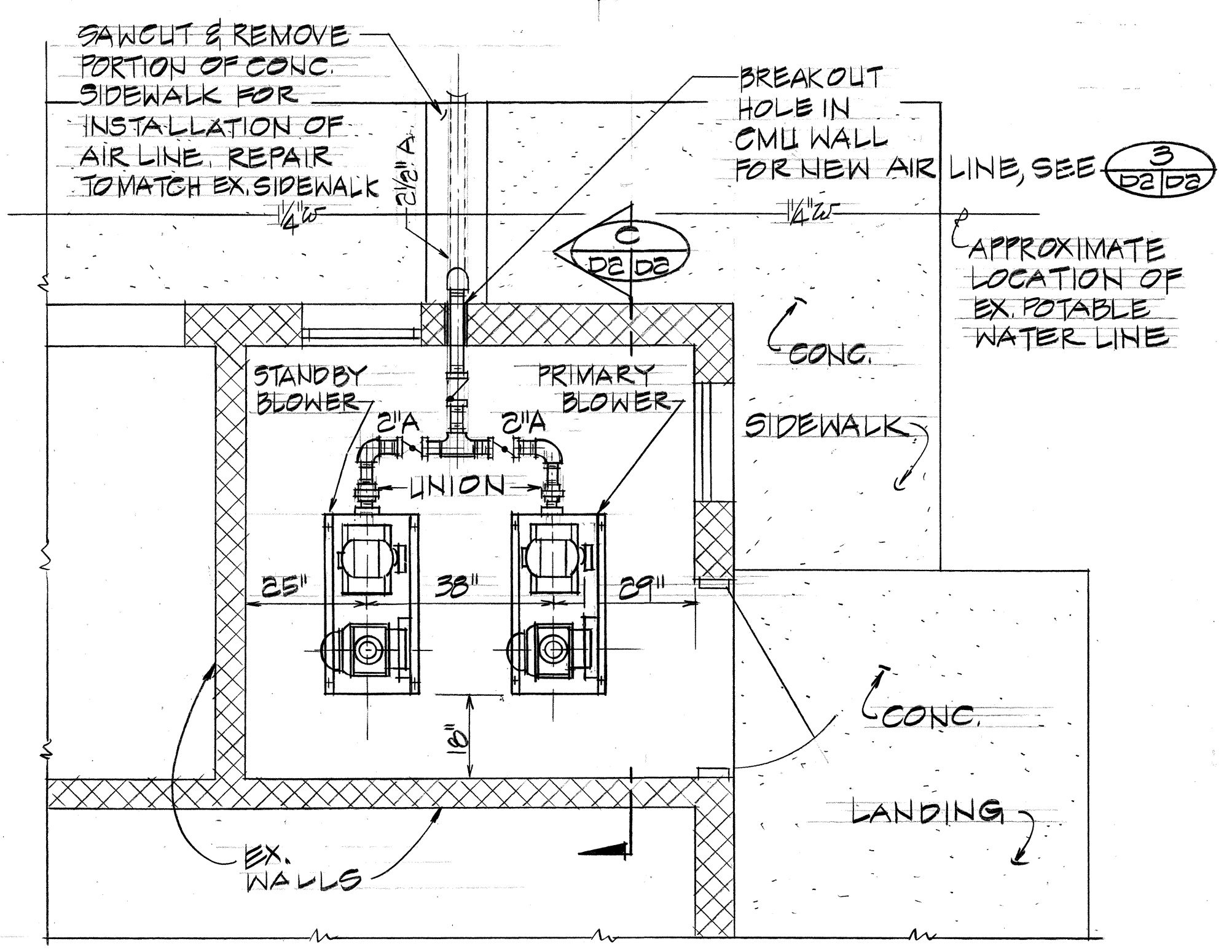
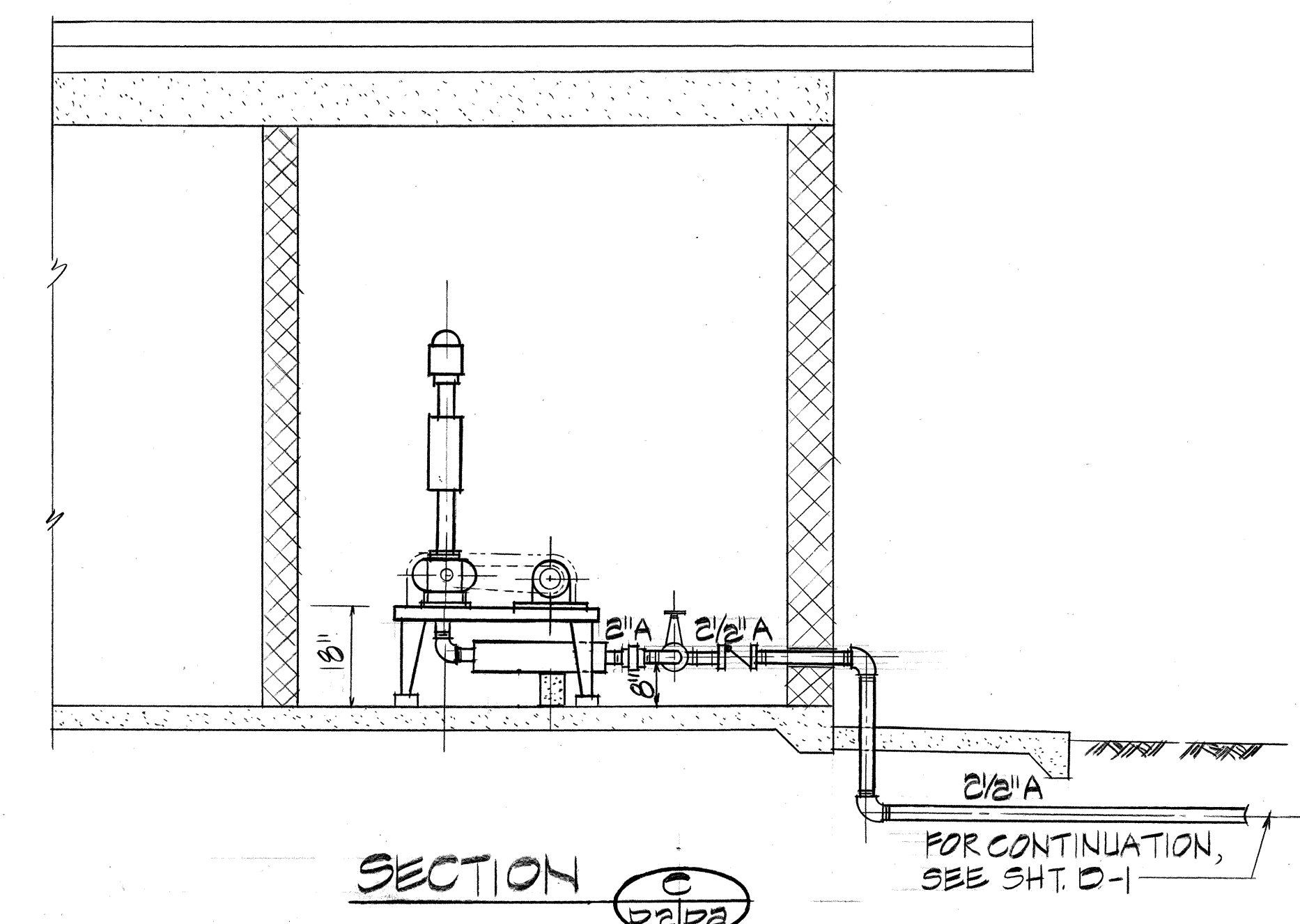


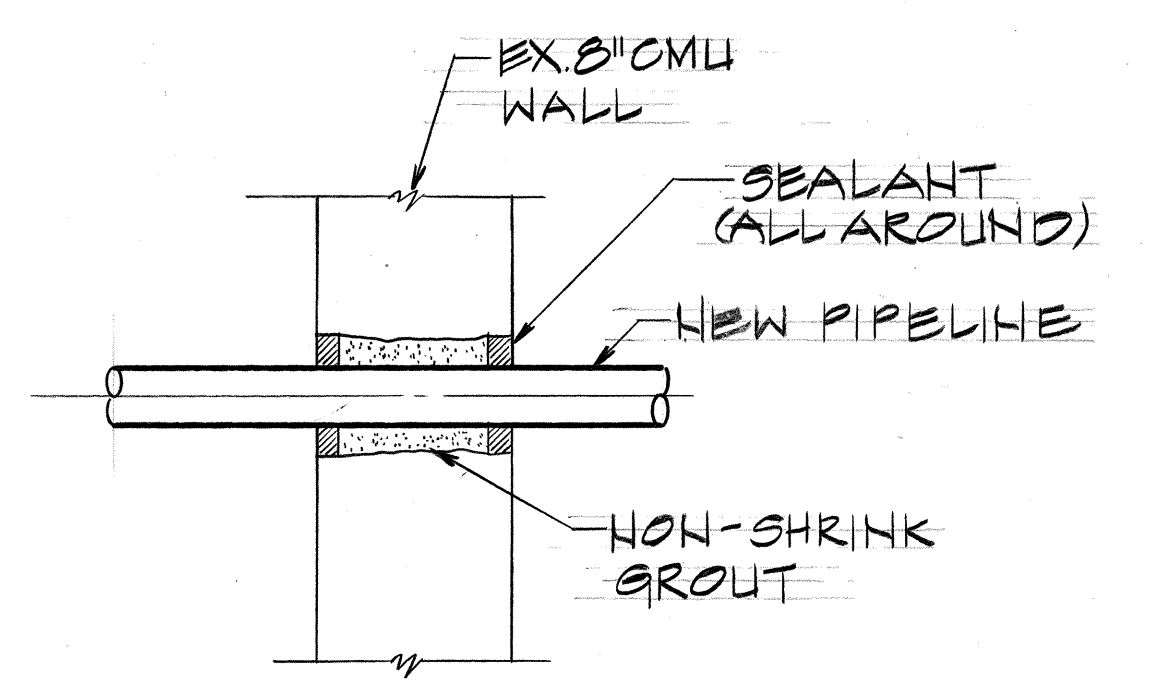
FED. ROAD DIST. NO.	STATE	FED. AID PROJ. NO.	FISCAL YEAR	SHEET NO.	TOTAL SHEETS
HAWAII	HAW.	I-H3-I(40)	1989	66	191



PLAN
NOT TO SCALE
BARMINUTOR CHANNEL MODIFICATIONS
SCALE: AS SHOWN



PLAN
NEW BLOWER ROOM
(ORIGINALLY CHLORINATOR ROOM)
1/2" = 1'-0"



PIPELINE THRU EX. CMU WALL
1/2" = 1'-0"

ROY T. TSUTSUMI
REGISTERED PROFESSIONAL ENGINEER
No. 4415-C
HAWAII, U.S.A.
THIS WORK WAS PREPARED BY ME OR UNDER MY SUPERVISION
SIGNATURE

STATE OF HAWAII
DEPARTMENT OF TRANSPORTATION
HIGHWAYS DIVISION
SEWAGE TREATMENT PLANT MODIFICATIONS
SITE DETAILS
INTERSTATE ROUTE H-3
PROJECT NO. I-H3-I(40)
SCALE: AS NOTED DATE: JULY, 1988
SHEET NO. 02 OF 2 SHEETS

DATE REVISION