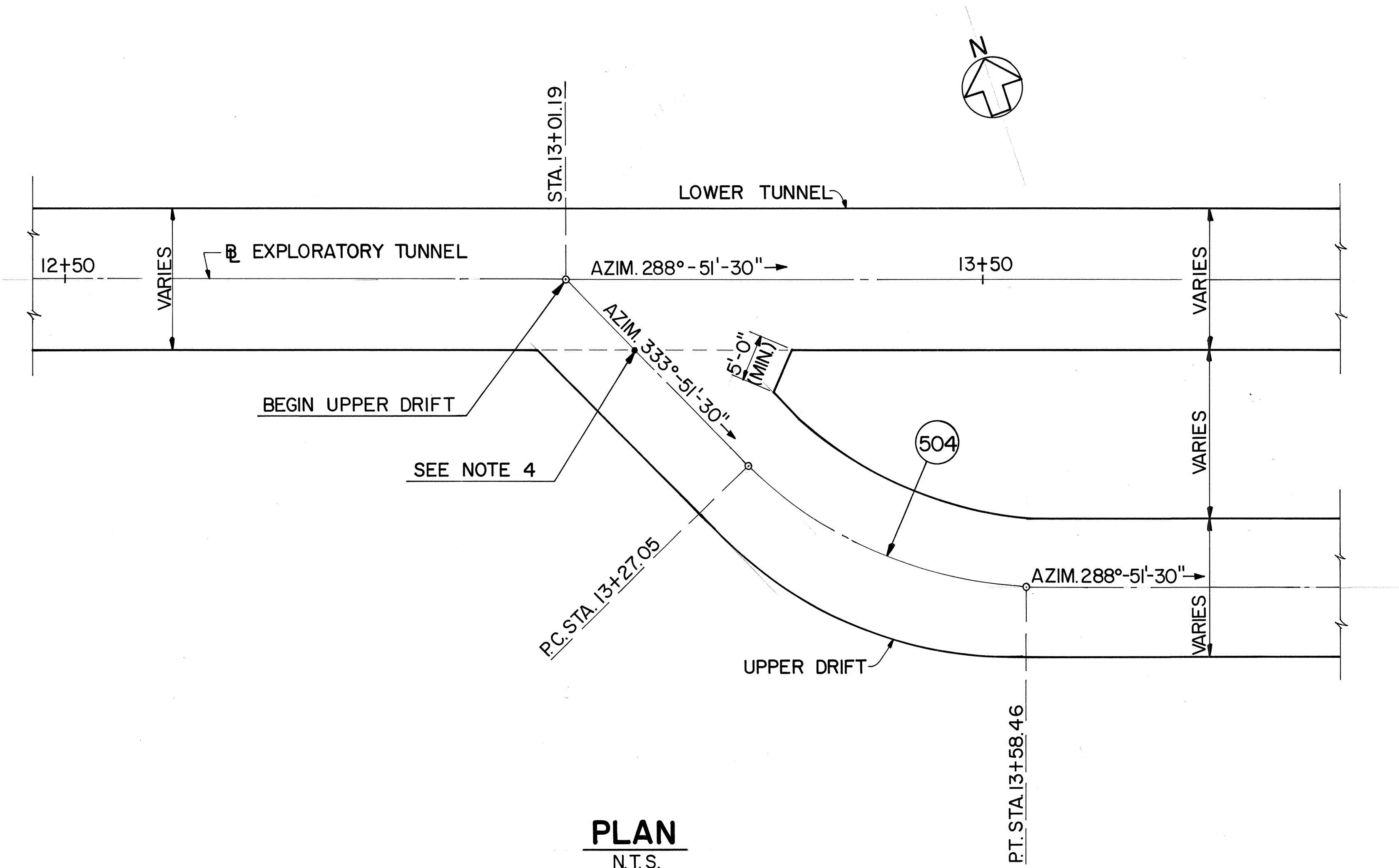


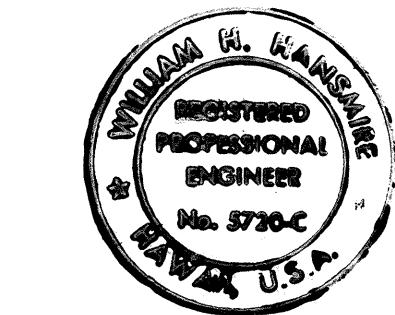
FED. ROAD DIST. NO.	STATE	FED. AID PROJ. NO.	FISCAL YEAR	SHEET NO.	TOTAL SHEETS
HAWAII	HAW.	I-H3-1(37)	1988	7	26

NOTES:

1. For Alignment see sheets 3 & 4.
2. Tunnel width varies with ground support type.
3. Upper drift shall not be started until lower tunnel is past Sta. 14+00 (min.).
4. Payment for upper drift will begin at point along upper drift centerline which intersects plane of lower tunnel south side wall.



ORIGINAL PLAN	SURVEY PLOTTED BY	DATE
NOTE BOOK	DRAWN BY	
No.	DESIGNED BY	
	QUANTITIES BY	
	CHECKED BY	



THIS WORK WAS PREPARED BY ME
OR UNDER MY SUPERVISION
William B. Kanihwa

STATE OF HAWAII
DEPARTMENT OF TRANSPORTATION
HIGHWAYS DIVISION
**UPPER DRIFT
INTERSECTION PLAN**
EXPLORARY TUNNEL
INTERSTATE ROUTE H-3
F.A.I. PROJECT NO. I-H3-1(37)
SCALE: AS NOTED DATE: AUG. 1988
SHEET No. OF SHEETS