

FED. ROAD DIST. NO.	STATE	FED. AID PROJ. NO.	FISCAL YEAR	SHEET NO.	TOTAL SHEETS
HAWAII	HAW.	I-H3-I(37)	1988	5	26

DETAIL / SECTION DESIGNATION

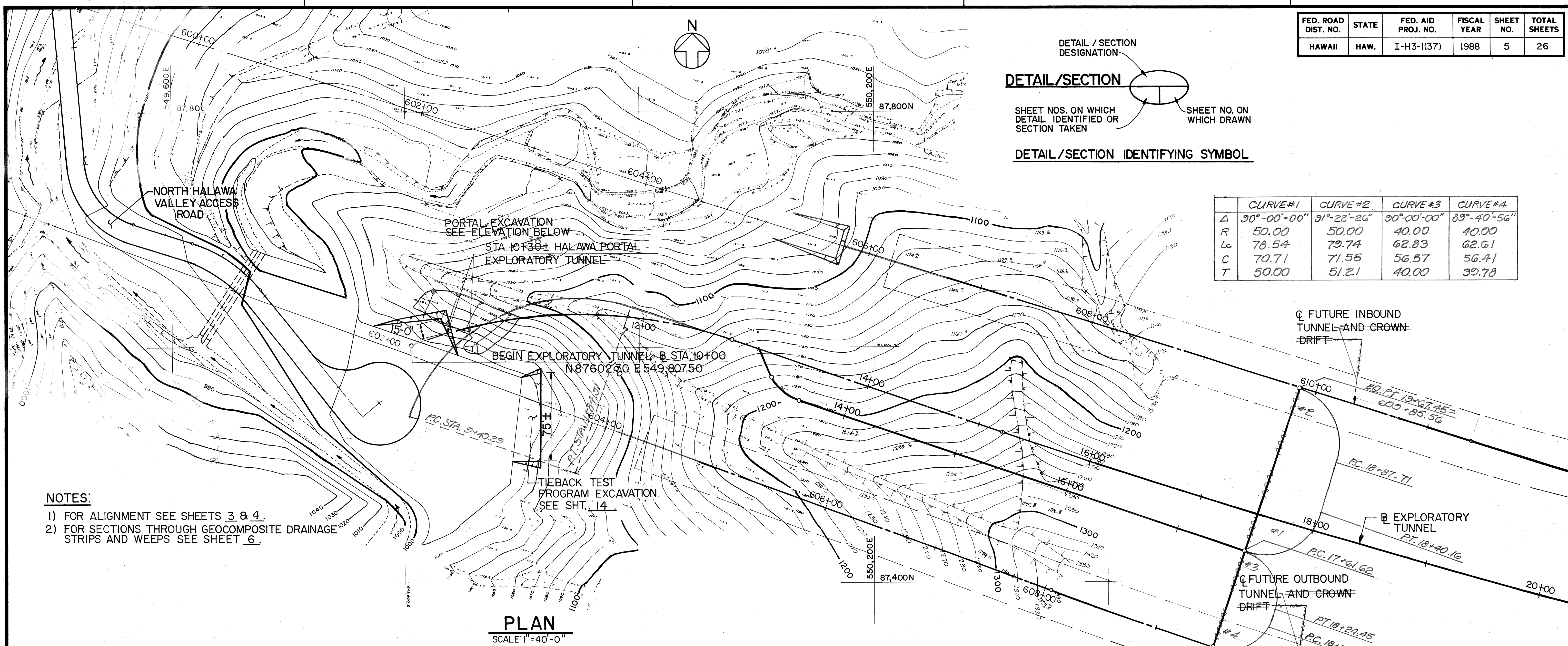
DETAIL/SECTION

SHEET NOS. ON WHICH DETAIL IDENTIFIED OR SECTION TAKEN

SHEET NO. ON WHICH DRAWN

DETAIL/SECTION IDENTIFYING SYMBOL

	CURVE #1	CURVE #2	CURVE #3	CURVE #4
A	30°-00'-00"	31°-22'-26"	30°-00'-00"	89°-40'-56"
R	50.00	50.00	40.00	40.00
Lc	78.54	79.74	62.83	62.61
C	70.71	71.55	56.57	56.41
T	50.00	51.21	40.00	39.78



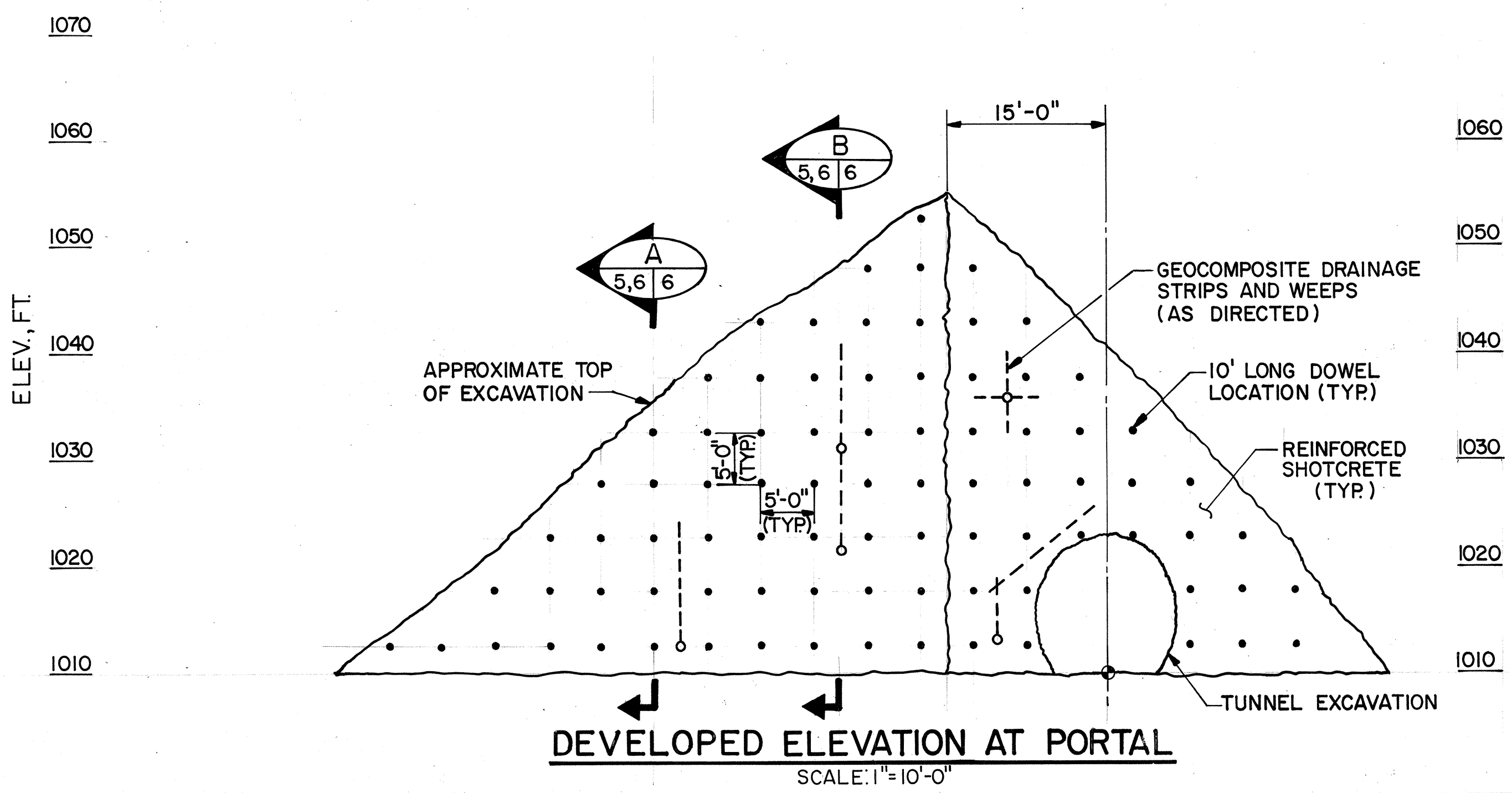
NOTES:

1) FOR ALIGNMENT SEE SHEETS 3 & 4.

2) FOR SECTIONS THROUGH GEOCOMPOSITE DRAINAGE STRIPS AND WEEPS SEE SHEET 6.

- GENERAL PORTAL SUPPORT CONSTRUCTION SEQUENCE NOTES:**
- EXCAVATE TO 5' (MAX.) BELOW EXISTING OR PREVIOUSLY EXCAVATED GRADE.
 - PLACE GEOCOMPOSITE DRAINAGE STRIPS AS DIRECTED BY THE ENGINEER.
 - SHOTCRETE (INITIAL LAYER) EXCAVATED FACE WITHIN 8 HOURS OF EXPOSURE.
 - INSTALL DOWELS.
 - INSTALL WELDED WIRE FABRIC.
 - TIGHTEN ANCHOR NUTS WITH HAND TOOLS.
 - SHOTCRETE FACE. COVER DOWEL HEAD, NUT, WASHERS, AND BEARING PLATE WITH SHOTCRETE (SECOND LAYER).
 - REPEAT AS NECESSARY TO EXCAVATION LIMITS. MODIFY EXTENT OF DOWELS AND SHOTCRETE TO SUIT ACTUAL FIELD CONDITIONS.
 - EMBED WEEPS IN SHOTCRETE AS DIRECTED BY THE ENGINEER.

SURVEY PLOTTED BY	DATE
DRAWN BY	
DESIGNED BY	
CHECKED BY	
NO.	



WORK WAS PREPARED BY ME OR UNDER MY SUPERVISION

WILLIAM H. MAXWELL

REGISTERED PROFESSIONAL ENGINEER

No. 5730-C

HAWAII, U.S.A.

STATE OF HAWAII
DEPARTMENT OF TRANSPORTATION
HIGHWAYS DIVISION

HALAWA PORTAL DETAILS
EXPLORATORY TUNNEL

INTERSTATE ROUTE H-3
F.A.I. PROJECT NO. I-H3-I(37)

SCALE: AS NOTED DATE: AUG. 1988

SHEET NO. OF SHEETS