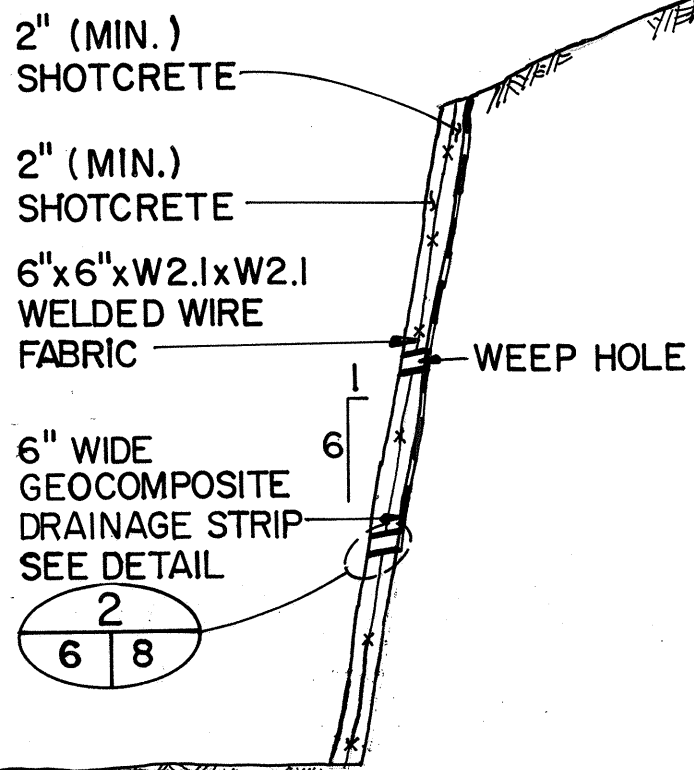
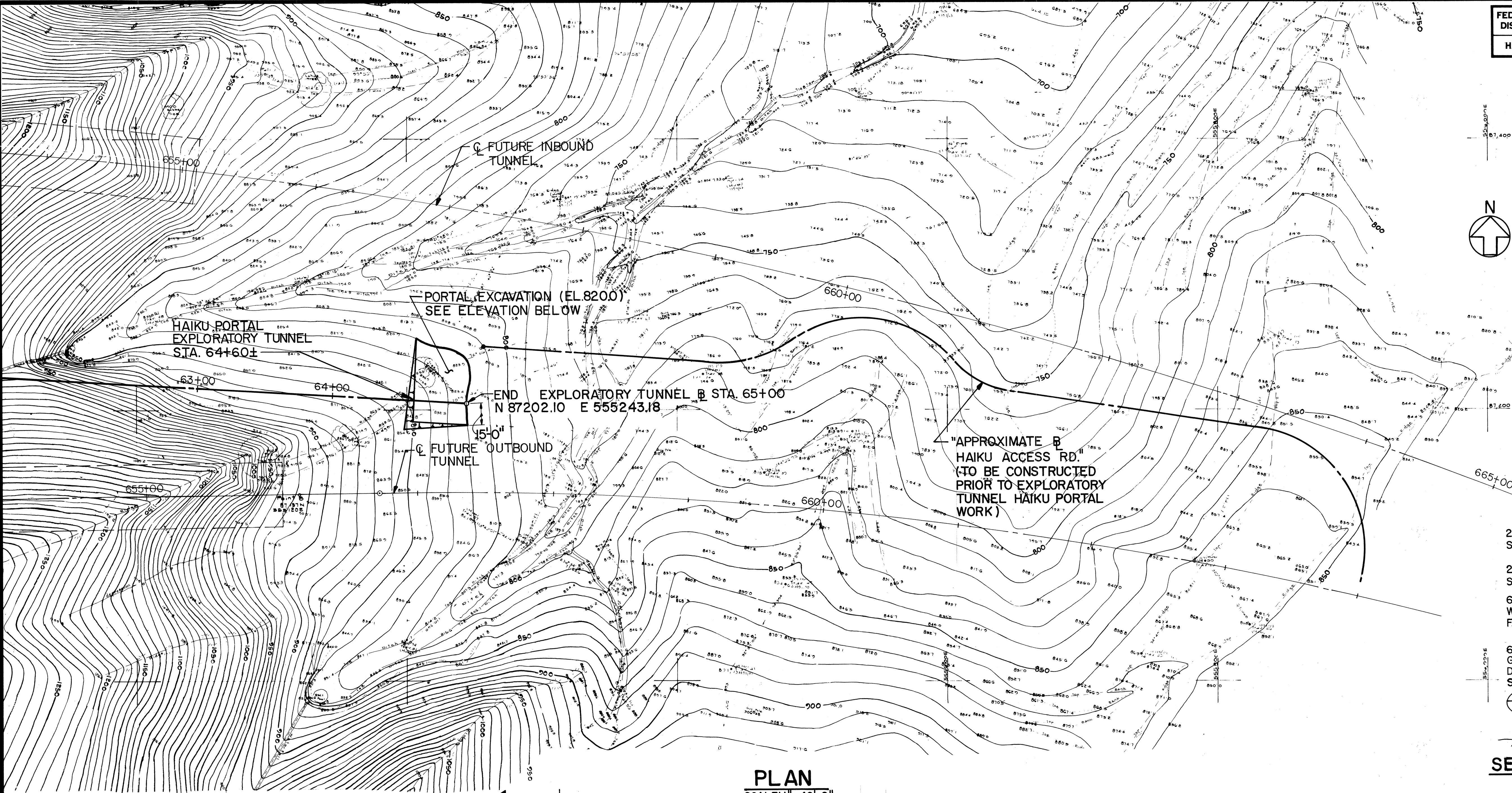
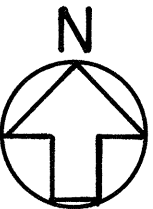


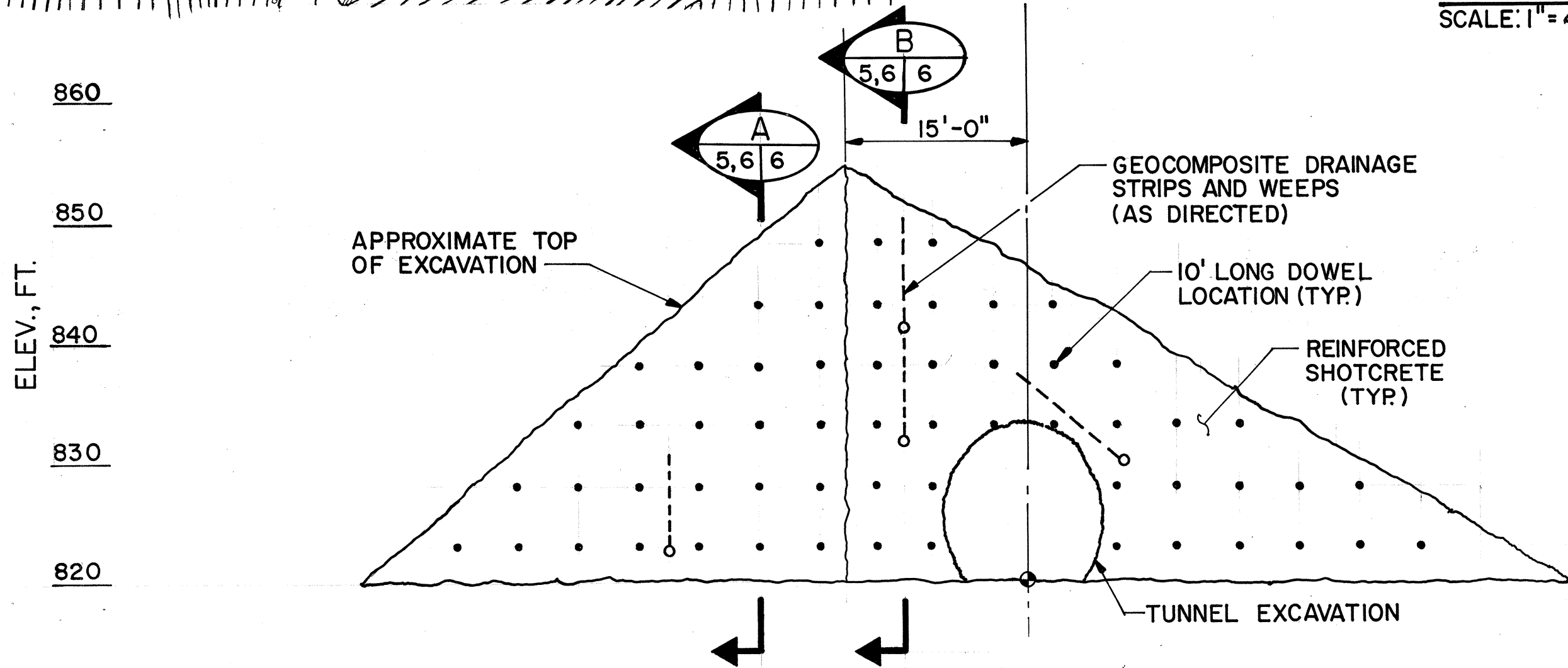
FED. ROAD DIST. NO.	STATE	FED. AID PROJ. NO.	FISCAL YEAR	SHEET NO.	TOTAL SHEETS
HAWAII	HAW.	I-H3-I(37)	1988	6	26

- NOTES:
- 1) FOR CONSTRUCTION SEQUENCE FOR PORTAL EXCAVATION, SEE NOTES, SHEET 5.
  - 2) FOR ALIGNMENT SEE SHEET 3.

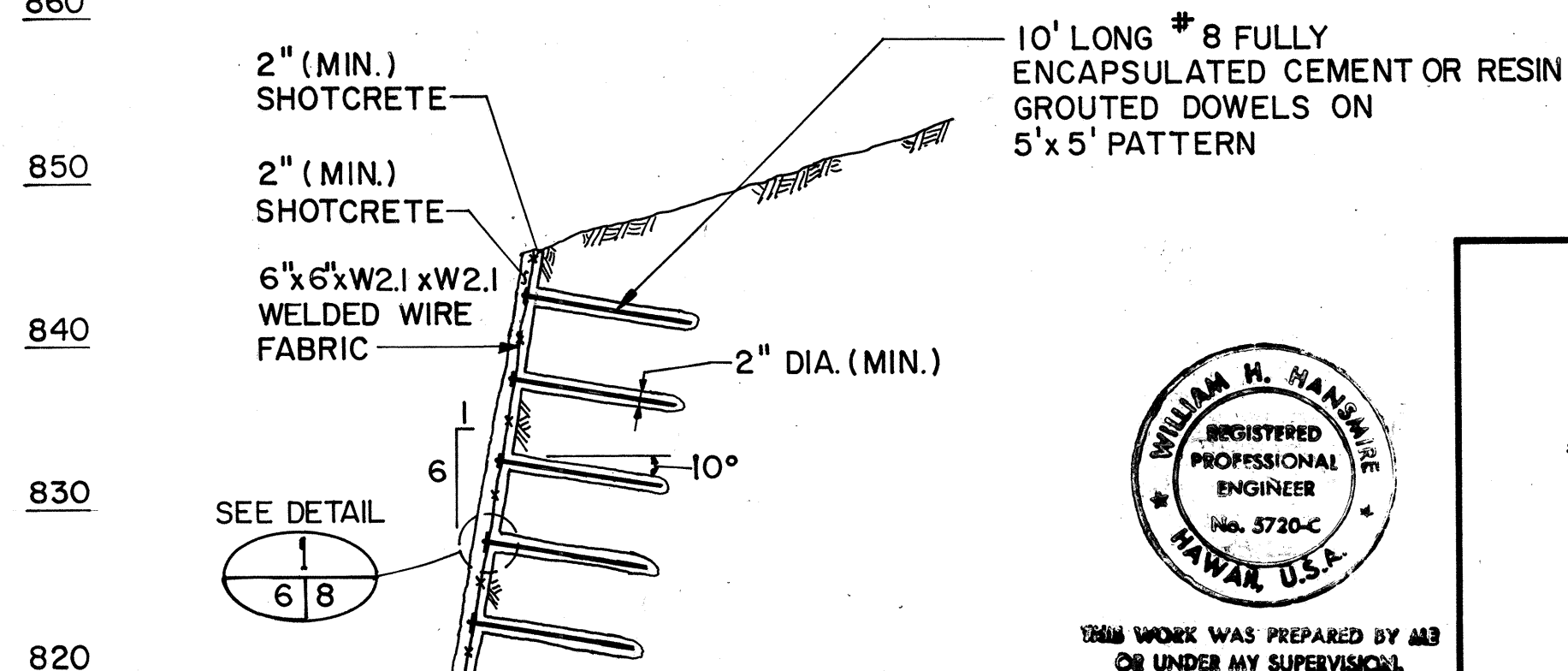


SECTION **B**  
N.T.S. 5,6 6

PLAN  
SCALE: 1" = 40'-0"

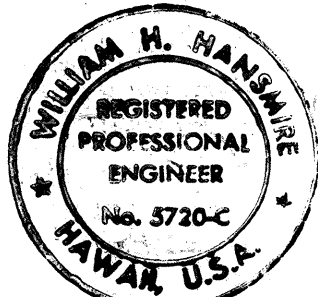


DEVELOPED ELEVATION AT PORTAL  
SCALE: 1" = 10'-0"



SECTION **A**  
SCALE: 1" = 10'-0" 5,6 6

DATE	_____
SURVEY PLOTTED BY	_____
ORIGINAL PLAN	_____
DESIGNED BY	_____
NOTED BY	_____
CHECKED BY	_____
NO.	_____



THIS WORK WAS PREPARED BY ME  
OR UNDER MY SUPERVISION  
*William H. Hansen*

STATE OF HAWAII  
DEPARTMENT OF TRANSPORTATION  
HIGHWAYS DIVISION

HAIKU PORTAL DETAILS  
EXPLORATORY TUNNEL

INTERSTATE ROUTE H-3  
F.A.I. PROJECT NO. I-H3-I(37)

SCALE: AS NOTED

DATE: AUG. 1988

SHEET NO. OF SHEETS