

LEGEND  
● Boring Location

FED. ROAD DIST. NO.	STATE	FED. AID PROJ. NO.	FISCAL YEAR	SHEET NO.	TOTAL SHEETS
HAWAII	HAW.	I-H3-1(31) Unit 2	1983	2	3

BORING SCHEDULE		
STATION	IDENTIFICATION	BORING DEPTH
345+70±	H3-1-60	60'
350+00±	H3-2-50	50'
355+00±	H3-3-50	50'
360+00±	H3-4-60	60'
365+00±	H3-5-60	60'
370+00±	H3-6-50	50'
373+80±	H3-7-60	60'

- GENERAL NOTES
1. This project consists of performing substrata investigations for a highway structure and includes borings, samples, and penetration tests.
  2. The Contractor shall be responsible for locating all existing underground utilities, pipes or other facilities whether shown on the plans or not prior to starting his operation. Any damage to these facilities will be borne by the Contractor and shall be restored to the satisfaction of the owner.
  3. The boring locations shown on the plan are approximate. The exact locations shall be staked out by the Engineer and even then, are subject to change at the discretion of the Engineer.

STATE OF HAWAII  
DEPARTMENT OF TRANSPORTATION  
HIGHWAYS DIVISION

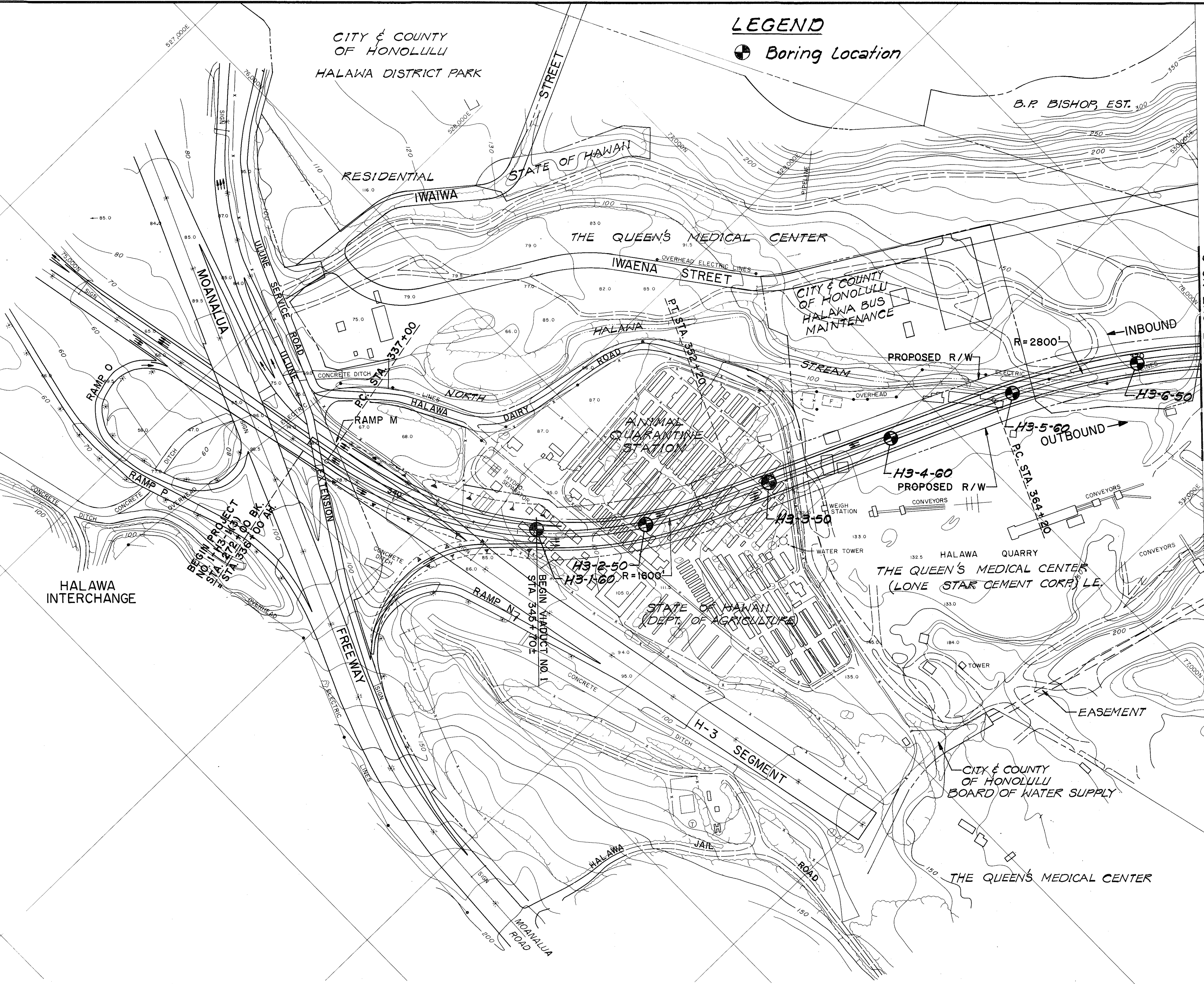
PLAN, SCHEDULE & GENERAL NOTES

INTERSTATE ROUTE H-3  
HALAWA I.C. TO HALEKOU I.C.  
HALAWA VIADUCT SECTION

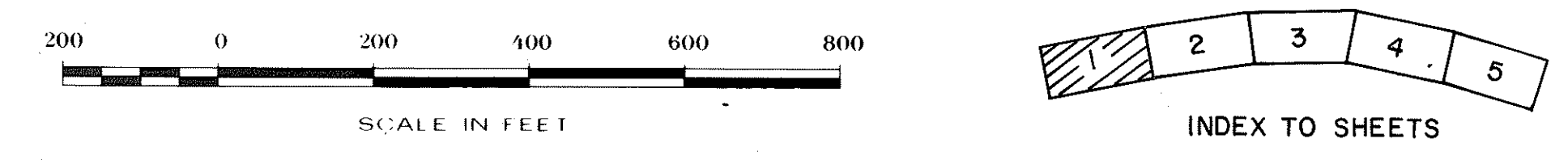
F.A.I. PROJ. NO. I-H3-1(31), UNIT 2

SCALE: 1" = 200' DATE: APR., 1983

SHEET NO. 1 OF 2 SHEETS



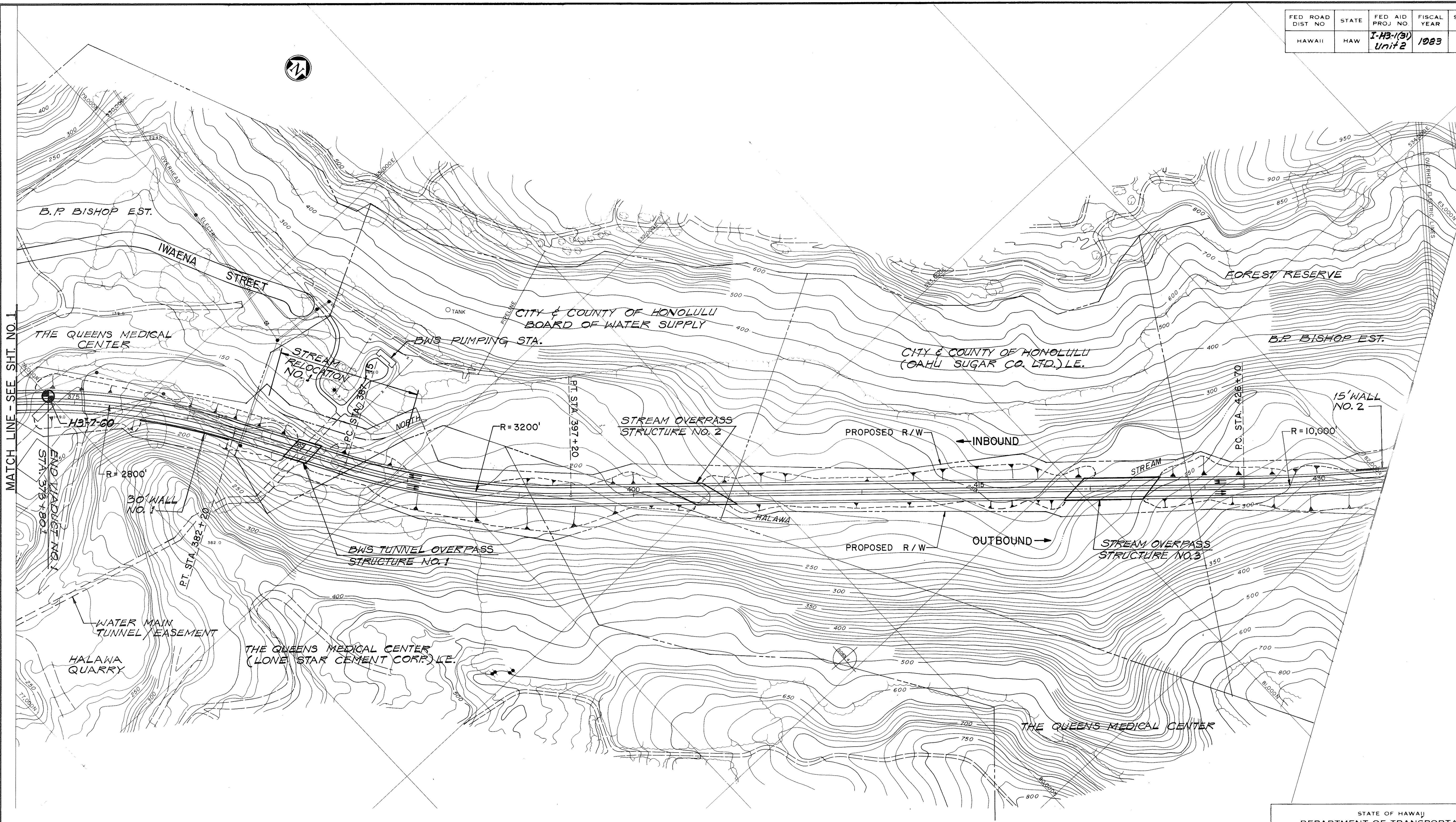
- NOTES:
1. Scale: 1"=200'
  2. Contour Interval: 10'
  3. Elevation based on Mean Sea Level.
  4. Hawaiian plane coordinate system zone III.
  5. Sheets 1,2,3,4 & 5 were compiled by photogrammetric methods from photography taken October 6, 1969 at 8,500 ASL and sheet 1 was revised from photography taken December 19, 1976 at 12,000 ASL.
  6. All contours in areas where the height of the vegetation exceeds five feet are to be interpreted as form lines only and as such may be substandard.



SURVEY PLOTTED BY	DATE
DRAWN BY	
DESIGNED BY	
QUANTITIES BY	
CHECKED BY	



FED. ROAD DIST. NO.	STATE	FED. AID PROJ. NO.	FISCAL YEAR	SHEET NO.	TOTAL SHEETS
HAWAII	HAW	I-H3-1(31) Unit 2	1983	3	3



DATE	
SURVEY PLOTTED BY	
ORIGINAL PLAN	
DESIGNED BY	
NOTED BY	
CHECKED BY	
NO.	

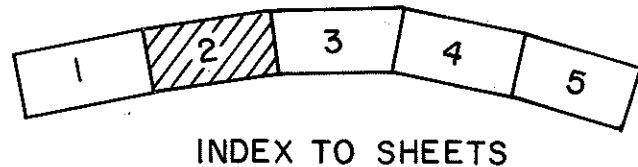
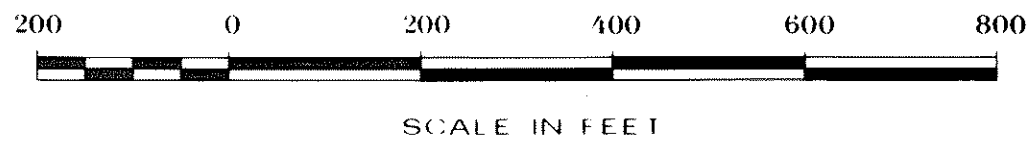
NOTES:

- Scale: 1"=200'
- Contour Interval: 10'
- Elevation based on Mean Sea Level.
- Hawaiian plane coordinate system zone III.

- Sheets 1,2,3,4 & 5 were compiled by photogrammetric methods from

photography taken October 6, 1969 at 8,500 ASL and sheet 1 was revised from photography taken December 19, 1976 at 12,000 ASL.

- All contours in areas where the height of the vegetation exceeds five feet are to be interpreted as form lines only and as such may be substandard.



STATE OF HAWAII  
DEPARTMENT OF TRANSPORTATION  
HIGHWAYS DIVISION

**PLAN**

**INTERSTATE ROUTE H-3  
HALAWA I.C. TO HALEKOU I.C.  
HALAWA VIADUCT SECTION**

**F.A.I. PROJ. NO. I-H3-1(31), UNIT 2**

SCALE: 1"=200' DATE: APR., 1983

SHEET NO. 2 OF 2 SHEETS