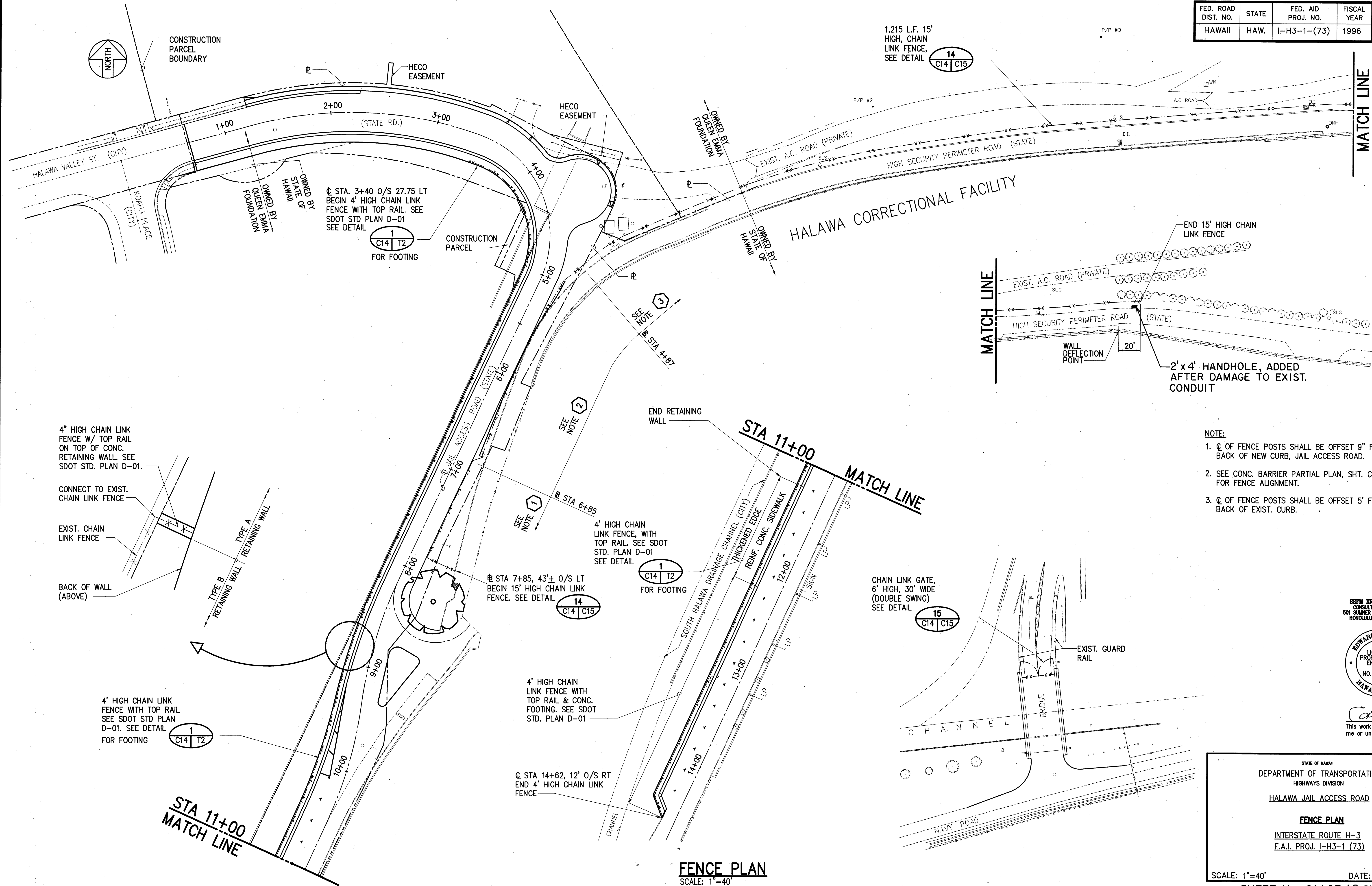
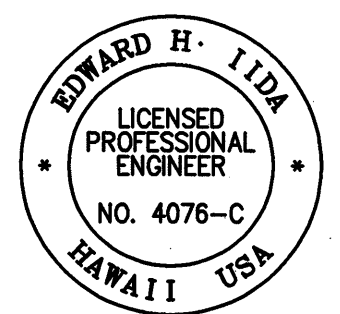


FED. ROAD DIST. NO.	STATE	FED. AID PROJ. NO.	FISCAL YEAR	SHEET NO.	TOTAL SHEETS
HAWAII	HAW.	I-H3-1-(73)	1996	18	42



- NOTE:
1. C. OF FENCE POSTS SHALL BE OFFSET 9" FROM BACK OF NEW CURB, JAIL ACCESS ROAD.
  2. SEE CONC. BARRIER PARTIAL PLAN, SHT. C16, FOR FENCE ALIGNMENT.
  3. C. OF FENCE POSTS SHALL BE OFFSET 5' FROM BACK OF EXIST. CURB.

SSPM ENGINEERS, INC.  
CONSULTING ENGINEERS  
501 SUMNER STREET, SUITE 502  
HONOLULU, HAWAII 96817



*Edward H. Iida*  
This work was prepared by me or under my supervision.

STATE OF HAWAII  
DEPARTMENT OF TRANSPORTATION  
HIGHWAYS DIVISION  
HALAWA JAIL ACCESS ROAD

**FENCE PLAN**  
INTERSTATE ROUTE H-3  
F.A.I. PROJ. I-H3-1 (73)

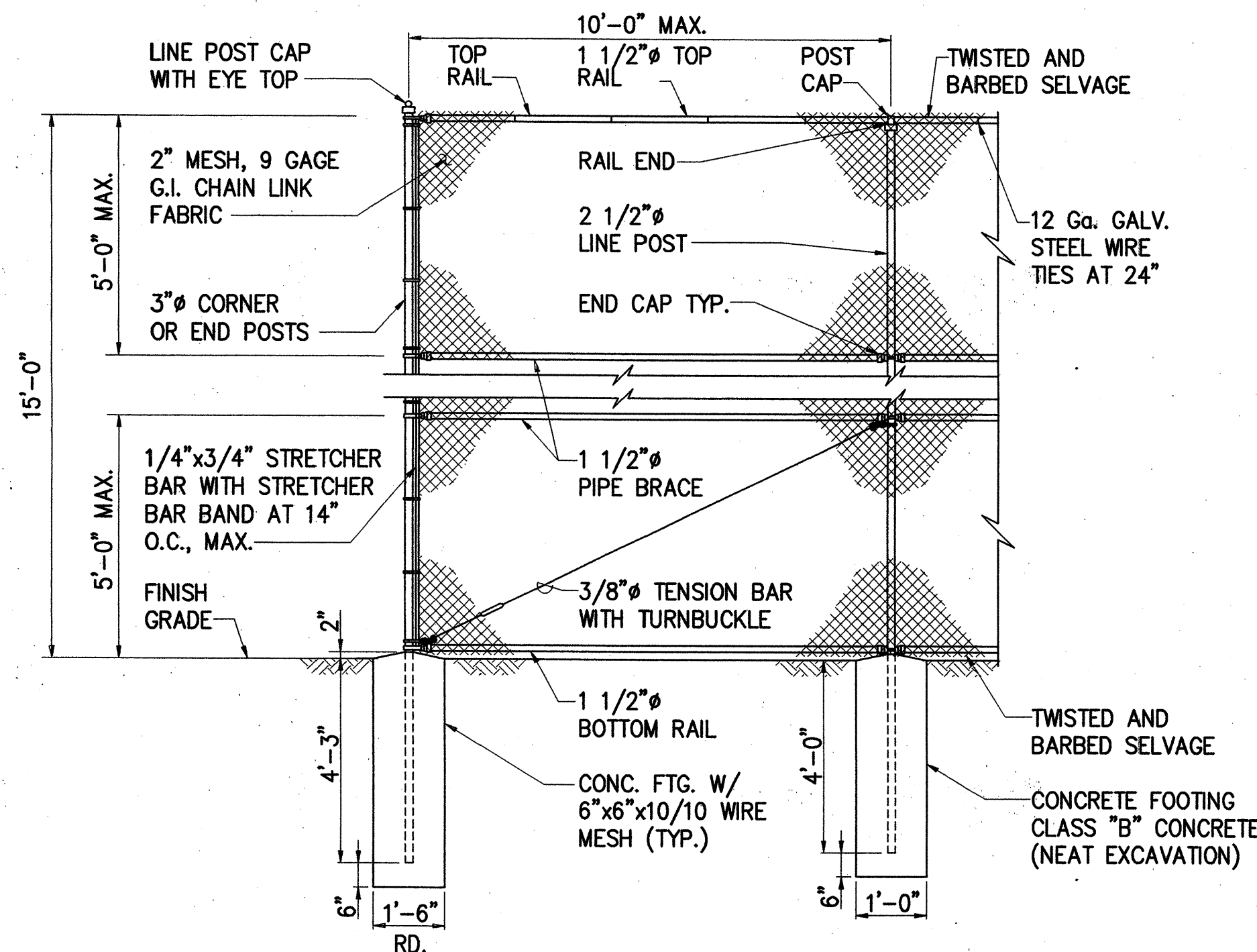
SCALE: 1"=40' DATE: APR. 1996  
SHEET No. C14 OF 42 SHEETS

**FENCE PLAN**  
SCALE: 1"=40'

SURVEY PLOTTED BY	DATE
DRAWN BY	
DESIGNED BY	
QUANTITIES BY	
CHECKED BY	
ORIGINAL PLAN	
NOTE BOOK	
No.	

**NOTES:**

1. ALL FENCING MATERIAL SHALL BE GALVANIZED STEEL.
2. POSTS AND BRACES SHALL BE SCHEDULE 40 (STANDARD WEIGHT) PIPE. SIZES SPECIFIED ARE NPS DESIGNATION.
3. TOP RAIL COUPLINGS SHALL BE LOCATED WITHIN 6" OF LINE POSTS.
4. TOP OF CONCRETE FOOTING SHALL BE CROWNED TO SHED WATER.



**SLOPE, CORNER, END OR PULL POST**  
**FIRST LINE POST**

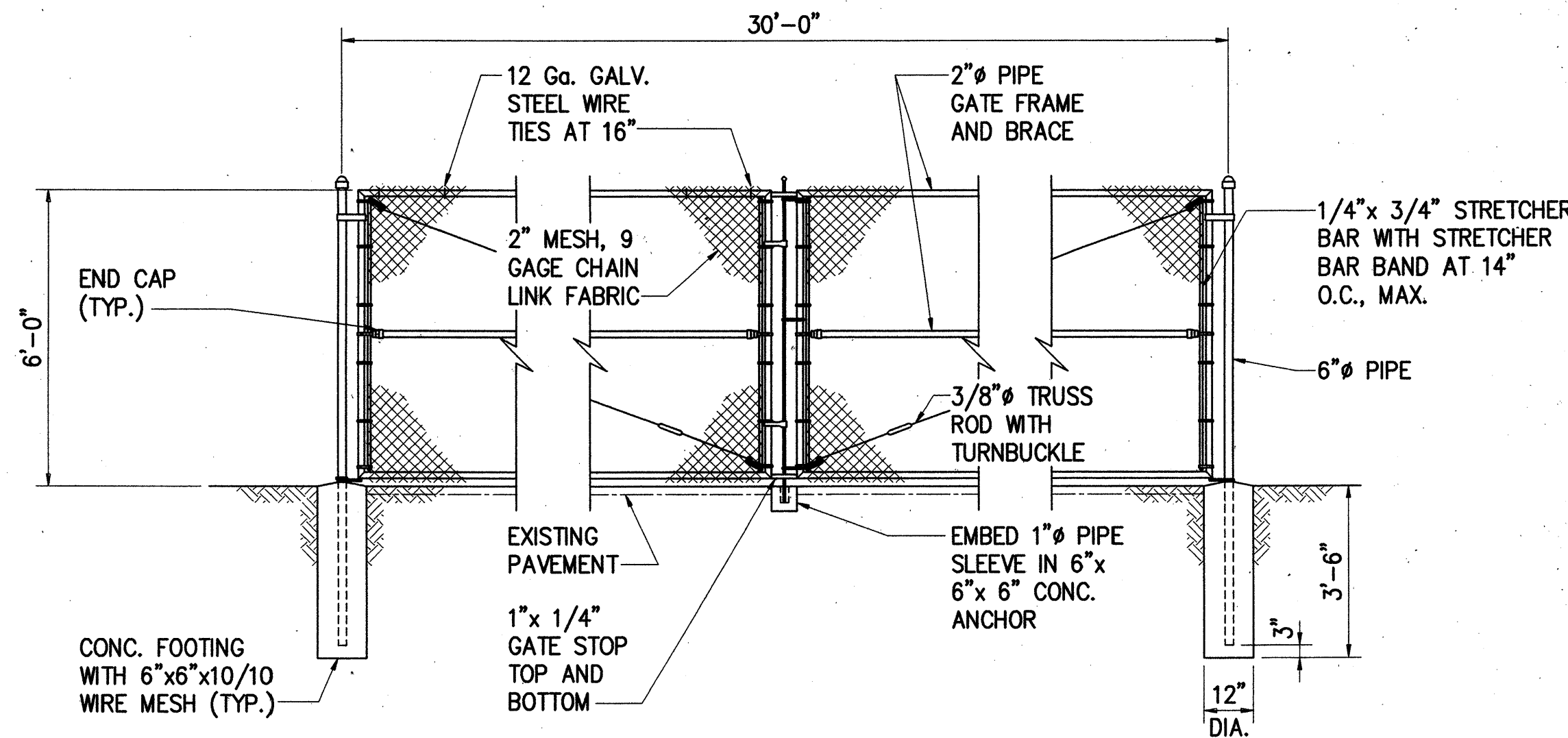
**15' CHAIN LINK FENCE DETAIL**

SCALE: 3/8"=1'-0"

14  
C14 C15

**NOTES:**

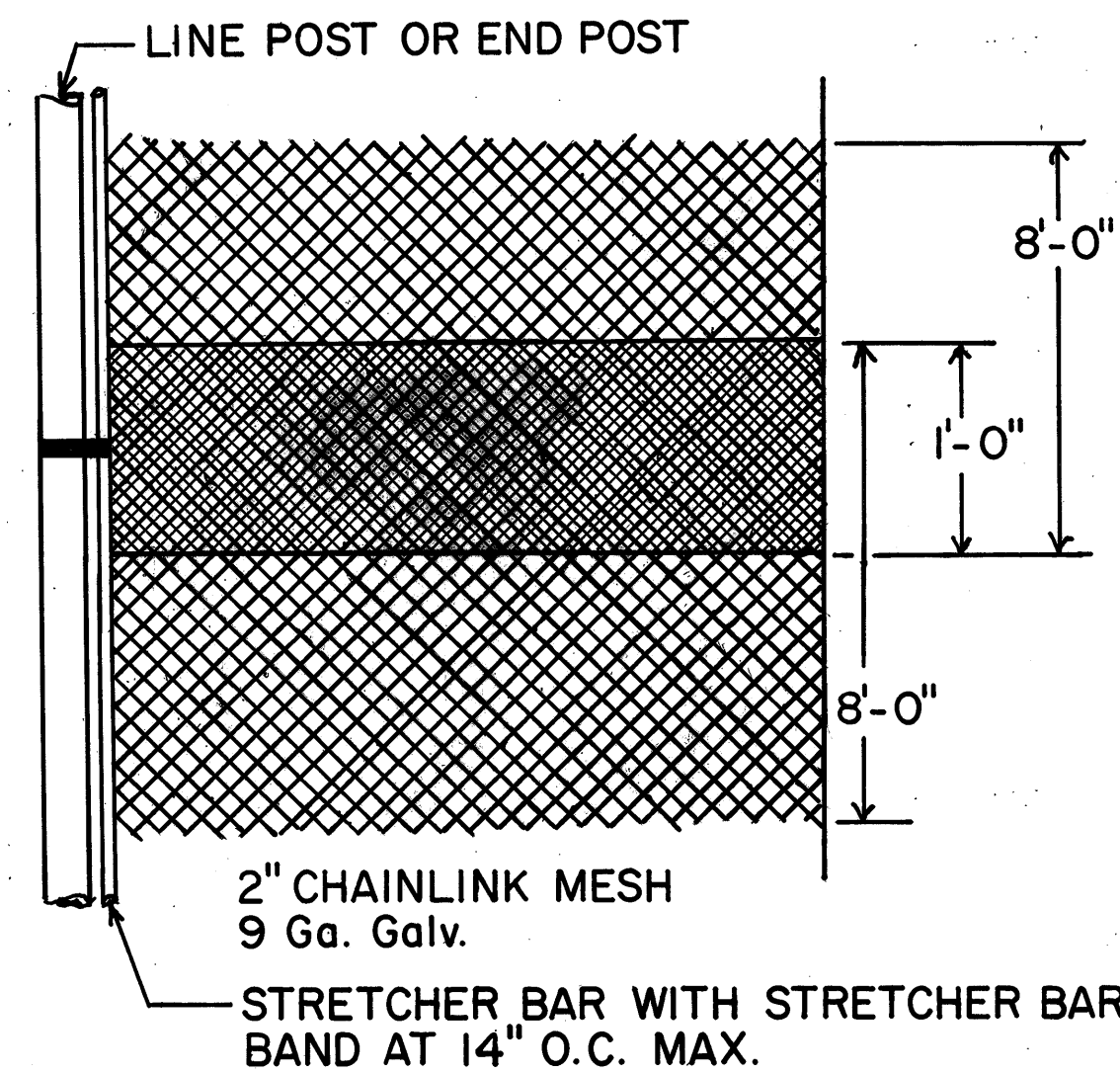
1. ALL FENCING MATERIAL INCLUDING GATE HARDWARE SHALL BE GALVANIZED STEEL.
2. POSTS, BRACES AND GATE FRAMES SHALL BE SCHEDULE 40 (STANDARD WEIGHT) PIPE. SIZES SPECIFIED ARE NPS DESIGNATION.
3. GATE SHALL BE PROVIDED WITH TUBULAR PLUNGER BAR, 1 LOCK KEEPER GUIDE, 1 PADLOCK AND CHAIN (GIVE 2 KEYS TO NSC FUELS, 471-2390), 2 LATCH FORKS, 2 FORK CATCHES, 1 CATCH FOR PLUNGER BAR, AND 2 GATE STOPS LOCATED AS DIRECTED BY THE ENGINEER.
4. CORNER FITTINGS FOR GATE FRAMES MAY BE USED IN LIEU OF WELDING.
5. GATE SHALL HAVE BARBED SELVAGE TOP AND BOTTOM.
6. TOP OF CONCRETE FOOTING SHALL BE CROWNED TO SHED WATER.



**30' WIDE DOUBLE SWING GATE DETAIL**

SCALE: 3/8"=1'-0"

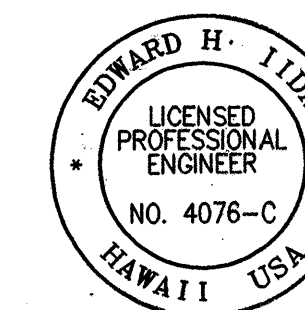
15  
C14 C15



**LAP DETAIL**

NOT TO SCALE

SSPM ENGINEERS, INC.  
CONSULTING ENGINEERS  
501 SUMNER STREET, SUITE 502  
HONOLULU, HAWAII 96817



*Edward H. Iida*  
This work was prepared by  
me or under my supervision.

STATE OF HAWAII  
DEPARTMENT OF TRANSPORTATION  
HIGHWAYS DIVISION

HALAWA JAIL ACCESS ROAD

FENCE DETAILS

INTERSTATE ROUTE H-3  
F.A.I. PROJ. I-H3-1 (73)

SCALE: DATE: APR. 1996

SHEET No. C15 OF 42 SHEETS