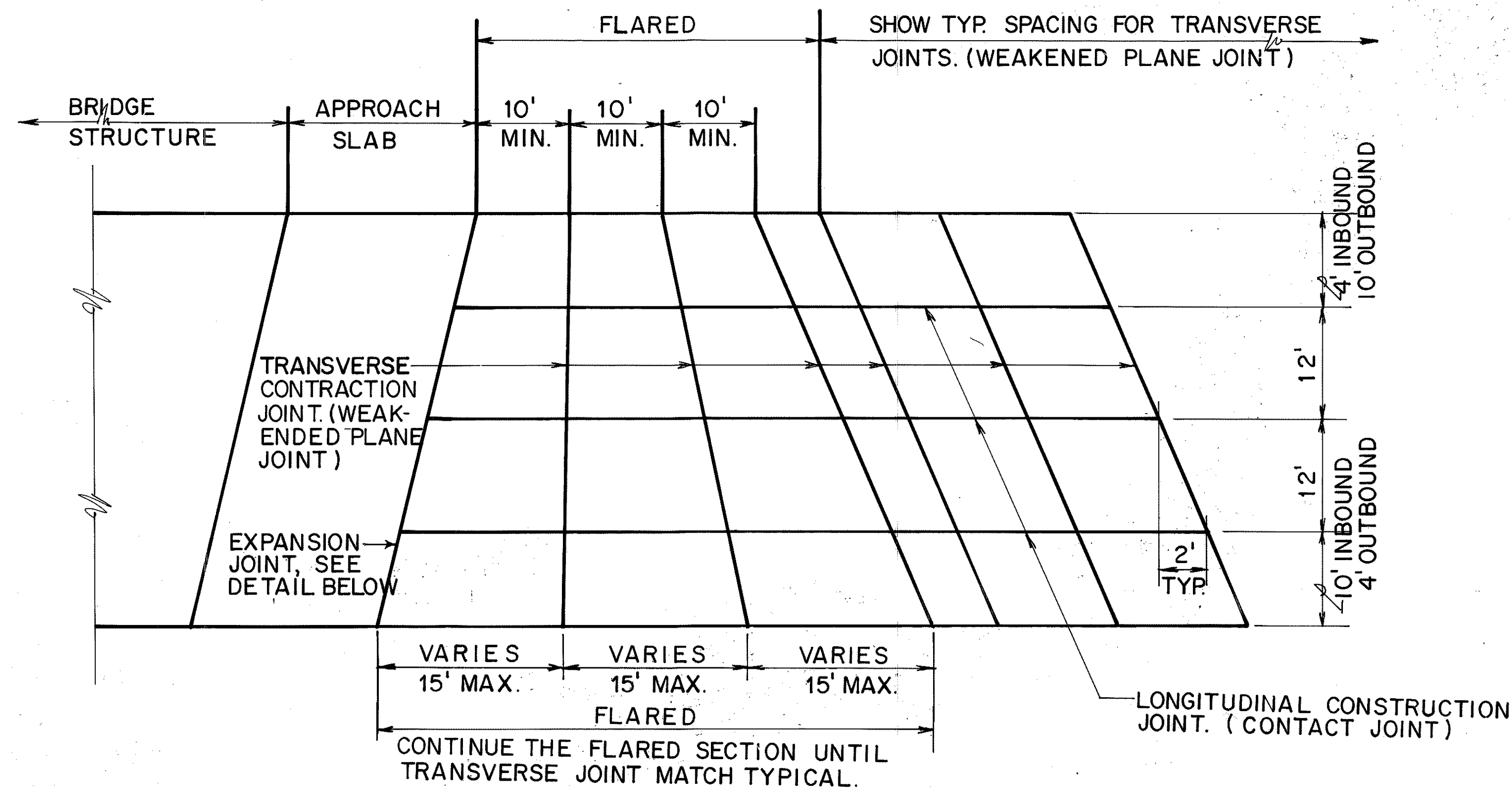


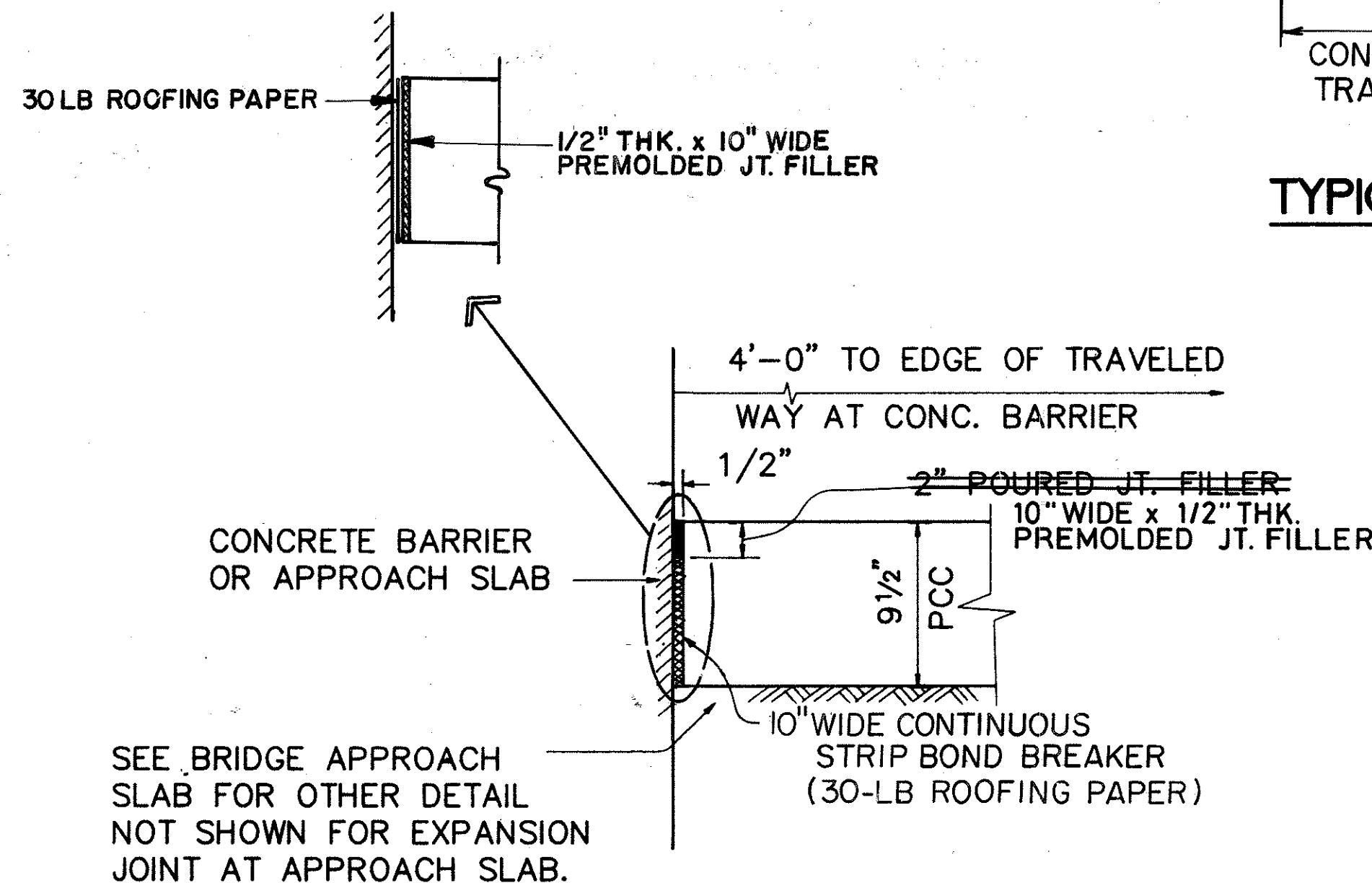
FED. ROAD DIS. NO.	STATE	FED. AID PROJ. NO.	FISCAL YEAR	SHEET NO.	TOTAL SHEETS
HAWAII	HAW.	I-H3-1(69)	1992	6	325



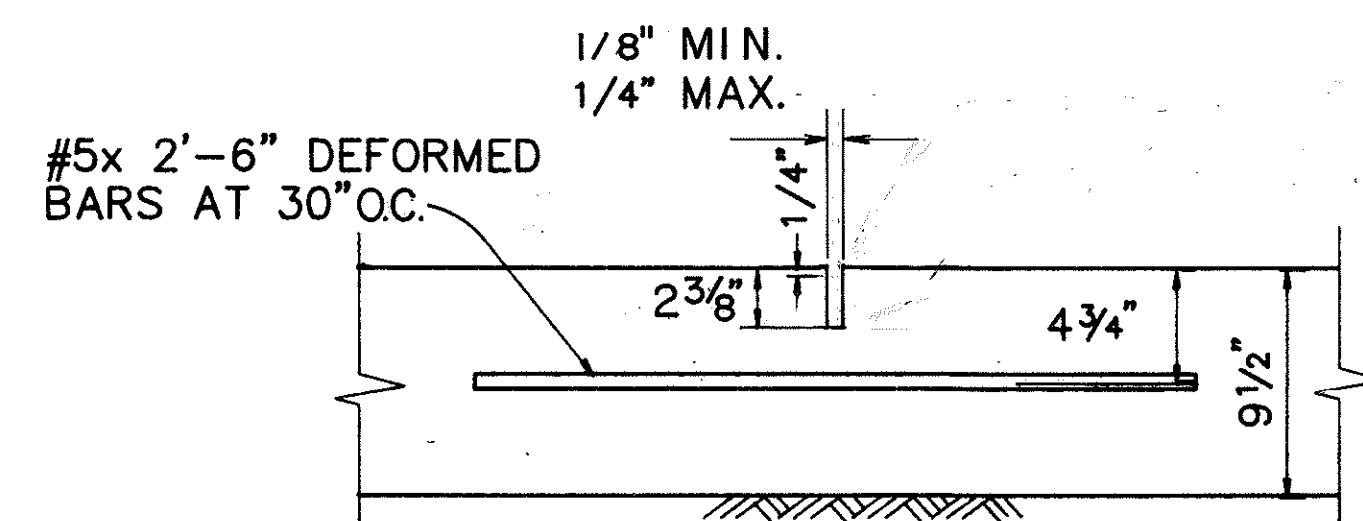
TYPICAL JOINT LOCATION AND LAYOUT PLAN
NOT TO SCALE

GENERAL NOTES

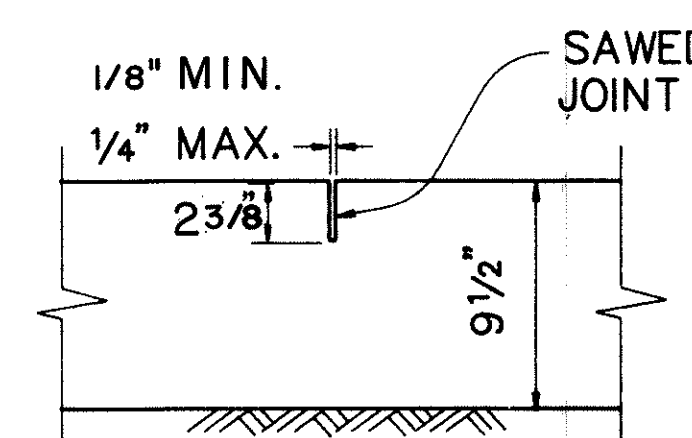
1. TRANSVERSE CONTRACTION JOINTS SHALL BE SAWED DIAGONALLY AS SHOWN, UNLESS OTHERWISE DIRECTED BY THE ENGINEER. UNDER TYPICAL CONDITIONS, TRANSVERSE CONTRACTION JOINTS SHALL BE SKEWED COUNTER-CLOCKWISE WITH AN OFFSET OF 2' FOR EVERY 12' OF LANE WIDTH FROM THE PERPENDICULAR TO THE EDGE OF TRAVELED WAY.
2. TRANSVERSE CONTRACTION JOINTS SHALL BE SPACED AT SUCCESSIVE INTERVALS OF 12', 15', 13' AND 14' IN THE DIRECTION OF TRAFFIC. REPEAT FOR THE REMAINING JOINTS. TEN (10) FEET MINIMUM SPACING SHALL BE MAINTAINED FROM BRIDGE APPROACH SLAB AS SHOWN.
3. TRANSVERSE CONSTRUCTION JOINTS SHALL BE LOCATED AT A MINIMUM DISTANCE OF 10' FROM THE NEAREST PLANNED TRANSVERSE CONTRACTION JOINT.
4. THE LONGITUDINAL CONTRACTION JOINT DETAIL SHALL BE APPLICABLE AT THE INTERMEDIATE TRAFFIC LANE EDGE WHEN TWO OR MORE LANES ARE PAVED IN ONE CONTINUOUS POUR. THE STRAIGHT TIE BARS SHALL BE PLACED MECHANICALLY TO THE DEPTH AS SHOWN ON THE DETAIL. ALL OTHER LONGITUDINAL JOINTS SHALL BE CONSTRUCTED IN ACCORDANCE WITH THE LONGITUDINAL CONSTRUCTION JOINT (CONTACT JOINT) DETAIL SHOWN ON THIS PLAN.
5. AT THE OUTER EDGE OF THE P.C.C. PAVEMENT, 1/4" RADIUS ROUNDING SHALL BE UTILIZED LONGITUDINALLY.



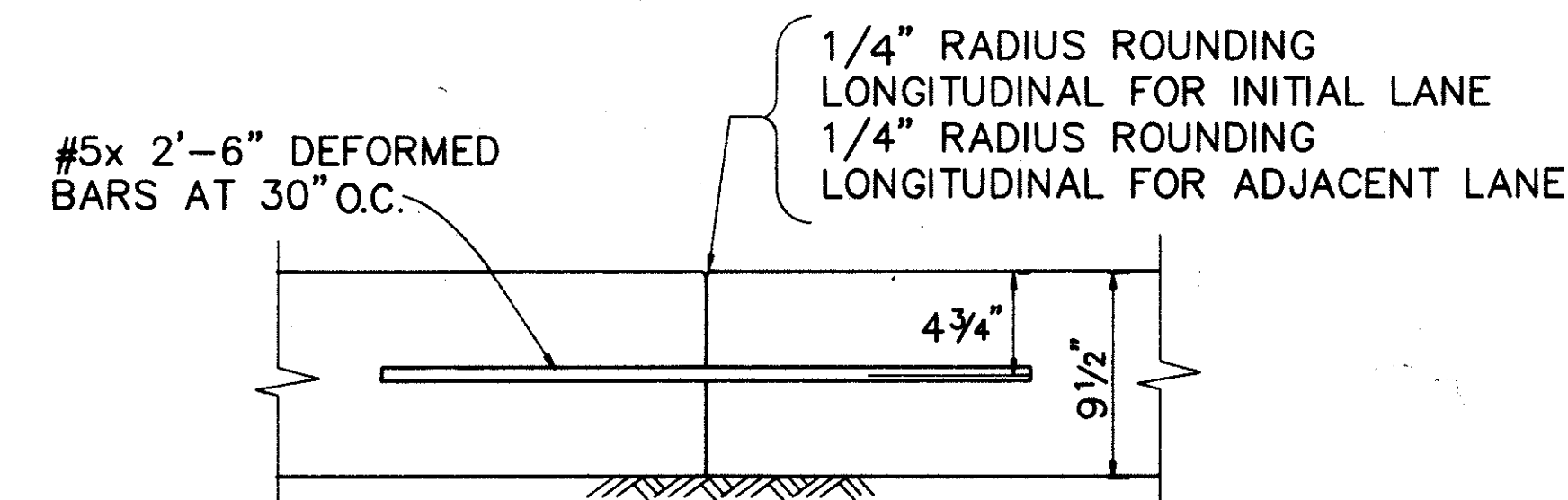
EXPANSION JOINT DETAIL
SCALE: 1 1/2" = 1'-0"



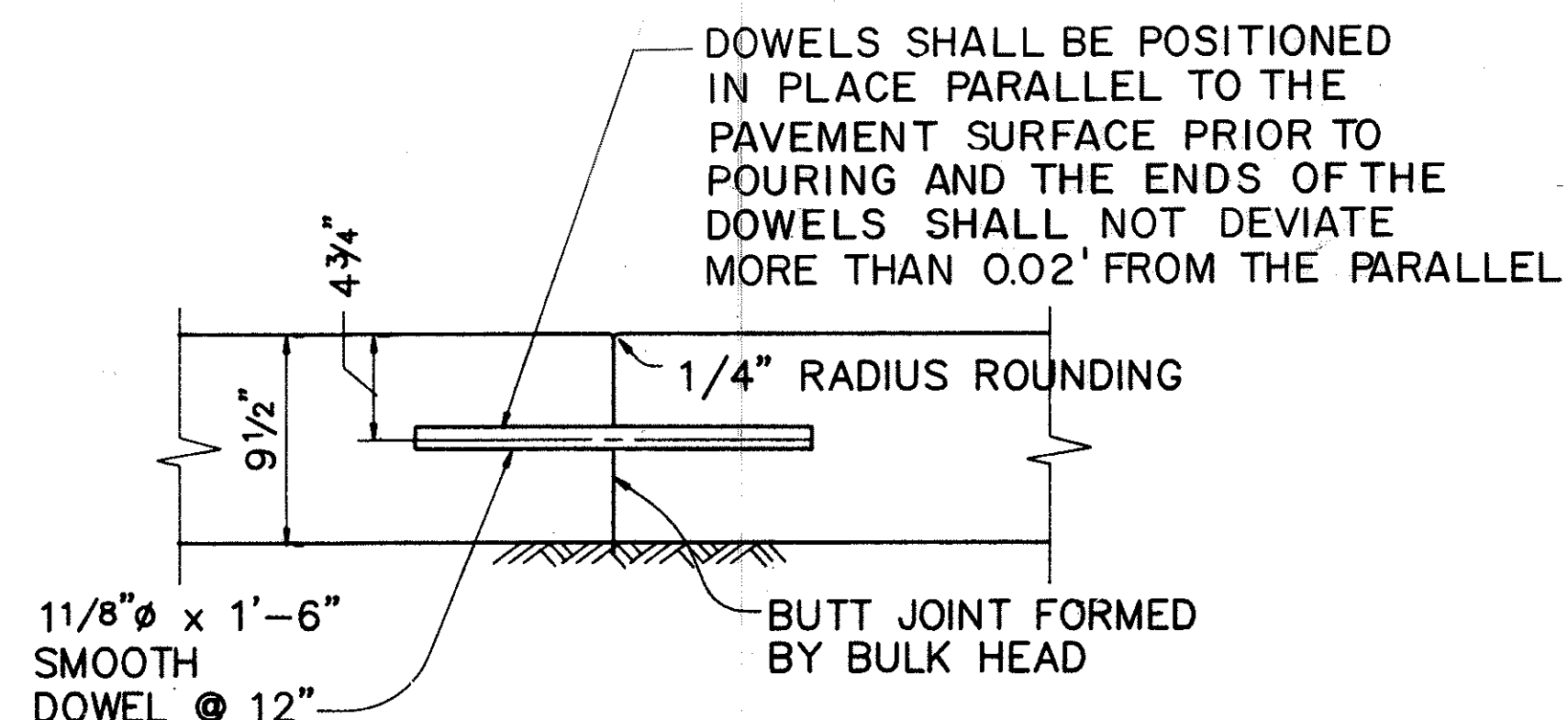
LONGITUDINAL CONTRACTION JOINT (WEAKENED PLANE JOINT)
SCALE: 1 1/2" = 1'-0"



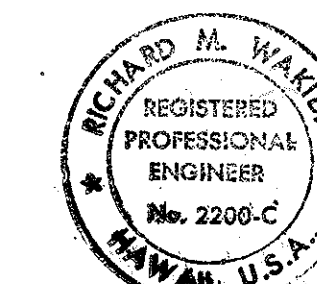
TRANSVERSE CONTRACTION JOINT (WEAKENED PLANE JOINT)
SCALE: 1 1/2" = 1'-0"



LONGITUDINAL CONSTRUCTION JOINT (CONTACT JOINT)
SCALE: 1 1/2" = 1'-0"



TRANSVERSE CONSTRUCTION JOINT (CONTACT JOINT)
SCALE: 1 1/2" = 1'-0"



THIS WORK WAS PREPARED BY ME
OR UNDER MY SUPERVISION
Richard M. Wanda
SIGNATURE DATE

10-21-93	REVISED JOINTS
DATE	REVISION
STATE OF HAWAII DEPARTMENT OF TRANSPORTATION HIGHWAYS DIVISION	
UNREINFORCED CONCRETE PAVEMENT JOINT DETAILS	
INTERSTATE ROUTE H-3 F.A.I. PROJECT NO. I-H3-1(69) & (70)	
SCALE: AS SHOWN	DATE: MARCH, 1992
SHEET No. 63 OF 95 SHEETS	