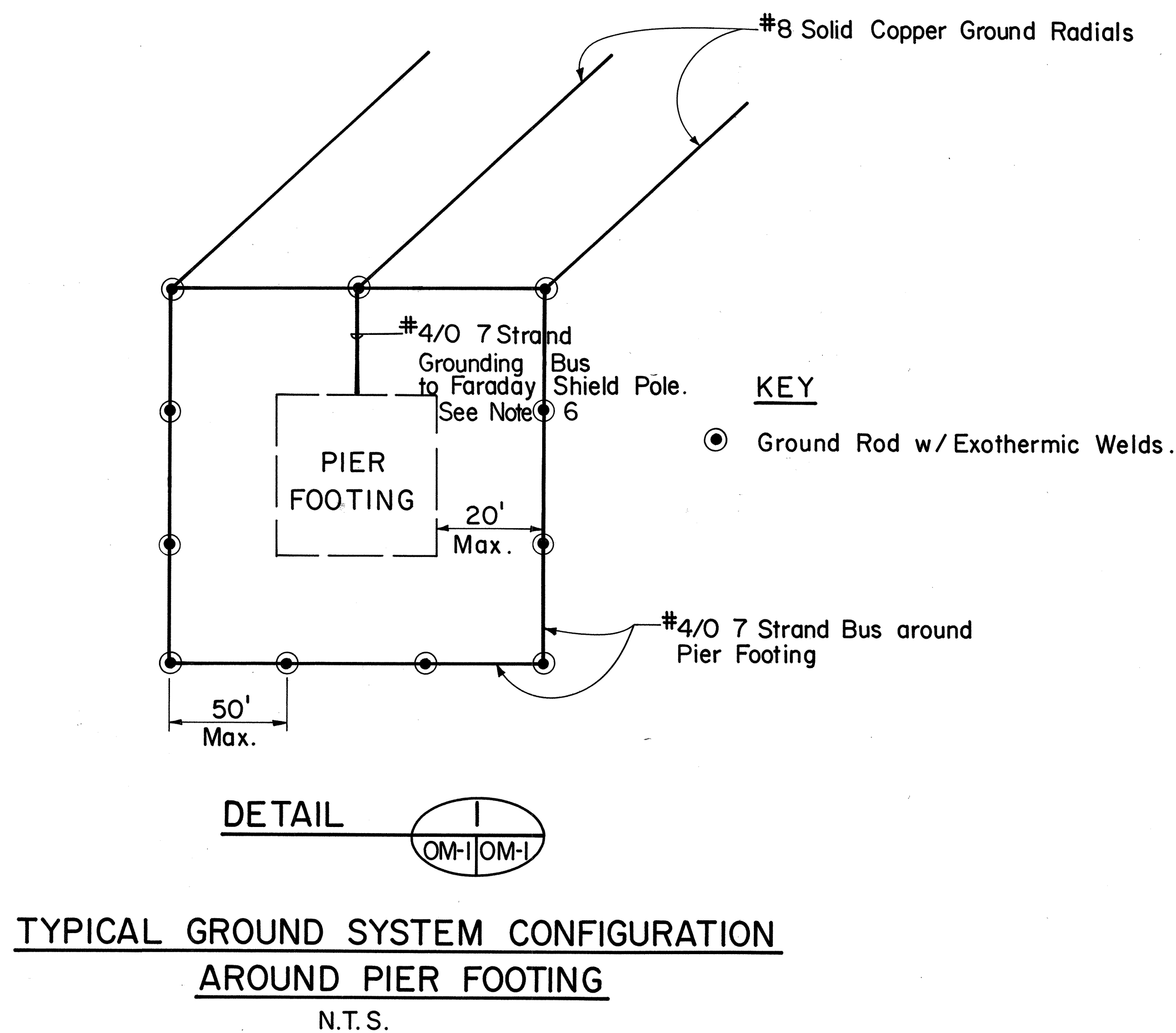
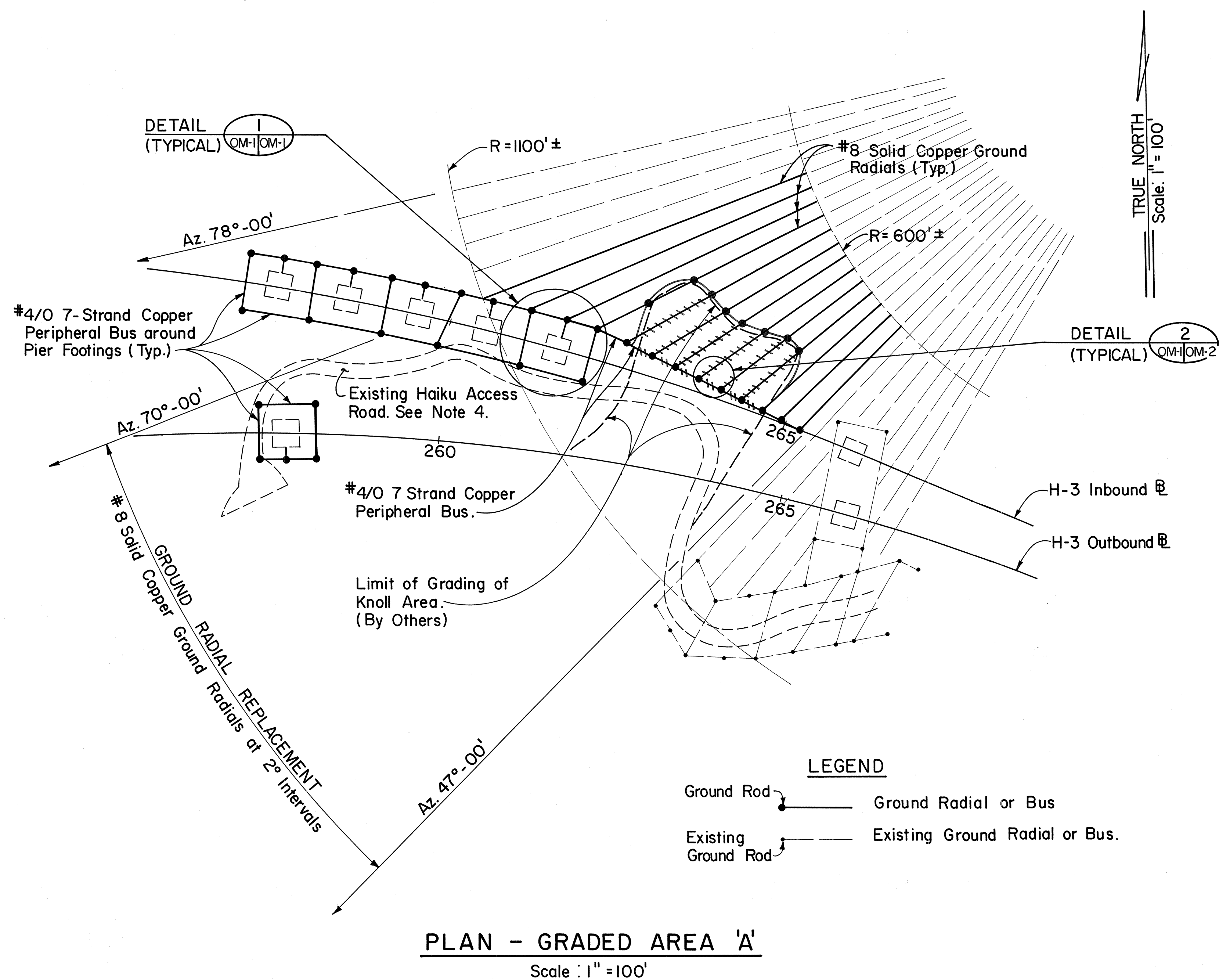


FED. ROAD DIST. NO.	STATE	FED. AID PROJ. NO.	FISCAL YEAR	SHEET NO.	TOTAL SHEETS
HAWAII	HAW.	I - H3-1 (52)	1988	73	75



ESTIMATED QUANTITIES FOR OMEGA STATION WORK			
ITEM NO.	ITEMS	UNIT	QUANTITY
685.01	Modifications to OMEGA Radial Ground System	Lump Sum	See below
—	#4/0 7 Strand wire	—	(3,400 L.F.)
—	#8 Solid Copper Wire	—	(4,600 L.F.)
—	#1/0 Solid Copper Wire	—	(500 L.F.)
—	Ground Rods	—	(70 EA.)
206.85	Structure Excavation for Ground Radials & Buses	C.Y.	400 C.Y.

GENERAL NOTES

- All ground system wire, cables and ground rods shall be connected by exothermic welding.
- Change in direction of copper cables or wires shall be accomplished by using a smooth radius bend.
- See Sheet OM-3 for overall Site Plan of Omega Transmitter Facility Ground Radial System.
- The location of the Haiku Access Road as shown on Plan, is approximate only.
- Existing ground wires in Area A will be removed by Others.
- The Contractor shall connect all Faraday Shield Supports located on the North side of the Inbound lanes & the South side of the Outbound lanes to a Pier Grounding Bus. For at-grade Faraday Shield Supports, the Contractor shall connect the support base to a driven ground rod w/a #4/0 -7 strand copper wire.

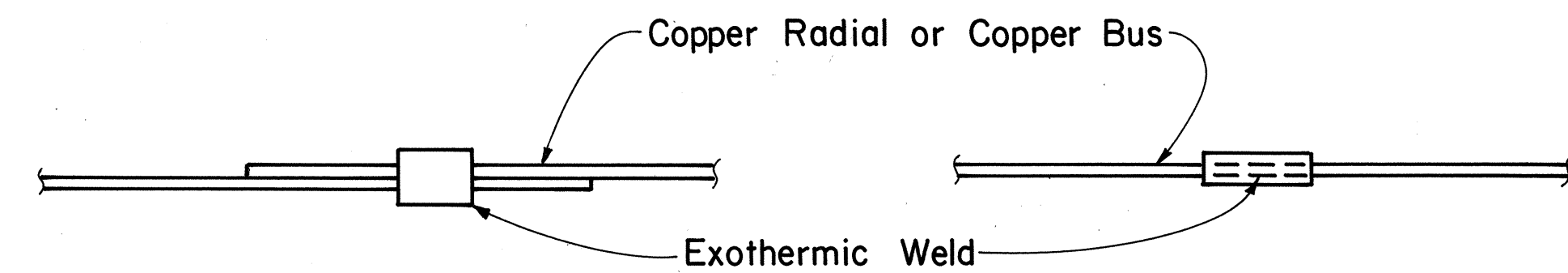
STATE OF HAWAII DEPARTMENT OF TRANSPORTATION HIGHWAYS DIVISION	
GROUND SYSTEM MODIFICATION PLAN	
HAIKU OMEGA TRANSMITTER FACILITY	
INTERSTATE ROUTE H-3 HAIKU VALLEY BRIDGES F.A.I. PROJECT NO. I-H3-1(52)	
SCALE: AS SHOWN	DATE: JULY 1988
SHEET No. OM-1 OF 3 SHEETS	

SURVEY PLOTTED BY	DATE
DRAWN BY	
TRACED BY	
DESIGNED BY	
CHECKED BY	
NO.	

AS BUILT

73

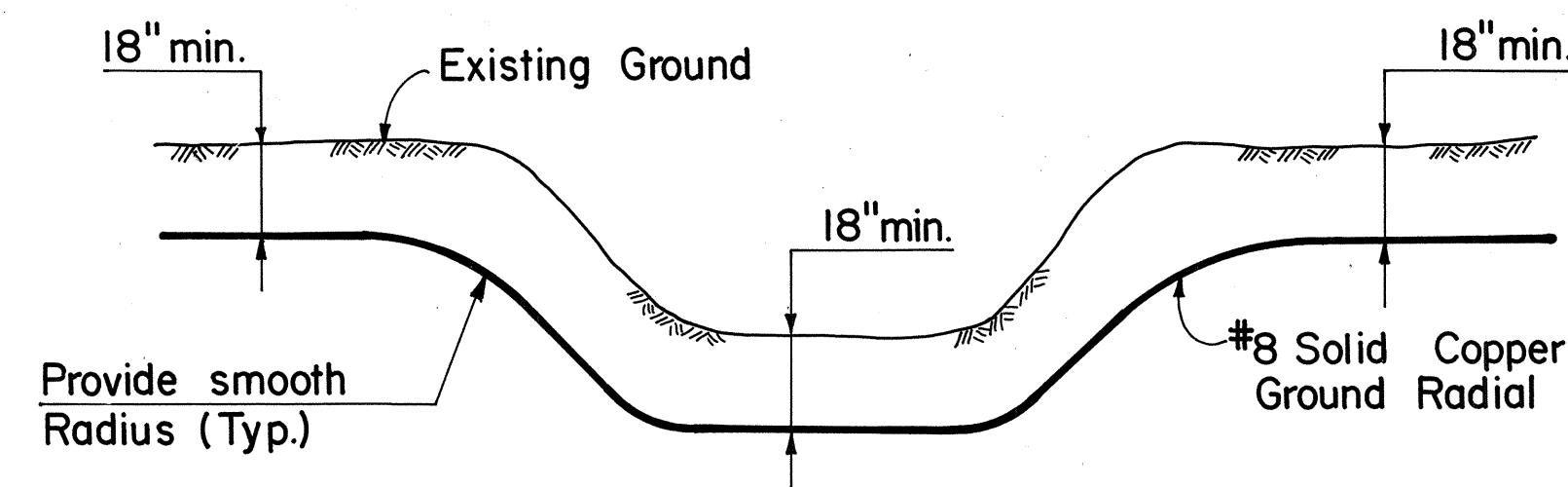
FED. ROAD DIST. NO.	STATE	FED. AID PROJ. NO.	FISCAL YEAR	SHEET NO.	TOTAL SHEETS
HAWAII	HAW.	I-H3-1(52)	1988	74	75



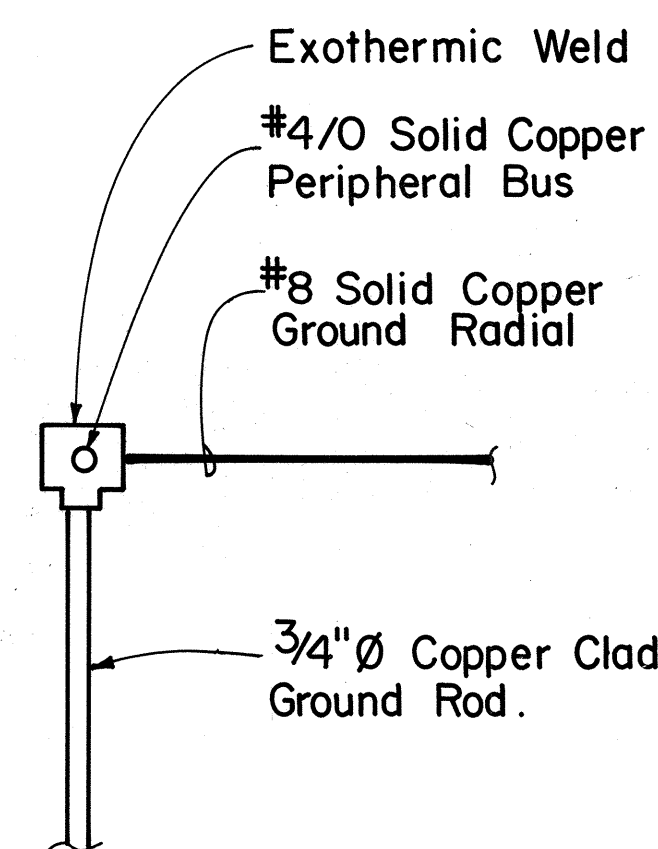
LAP SPLICE

BUTT SPLICE (ALTERNATE)

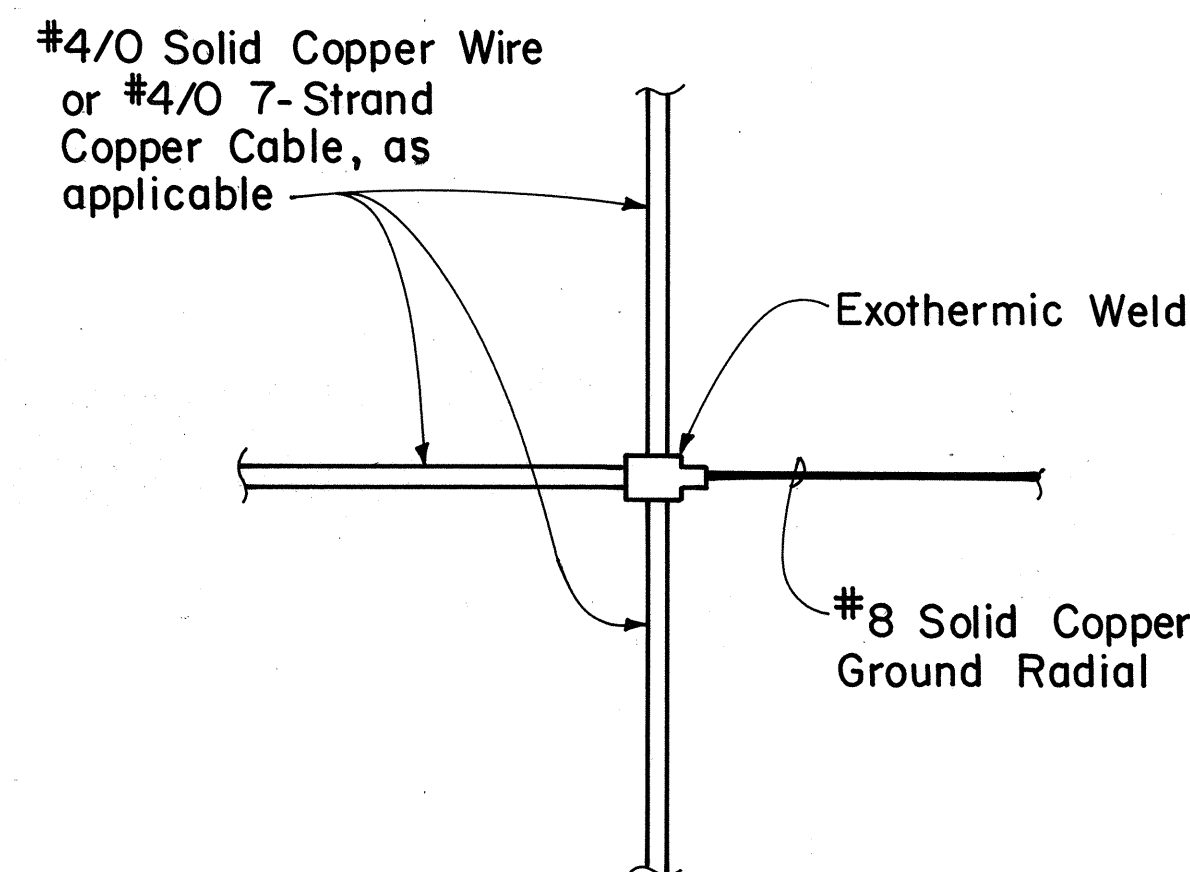
TYPICAL BUS OR RADIAL SPLICE DETAIL



TYPICAL GROUND RADIAL INSTALLATION UNDER EXISTING DITCH OR SWALE

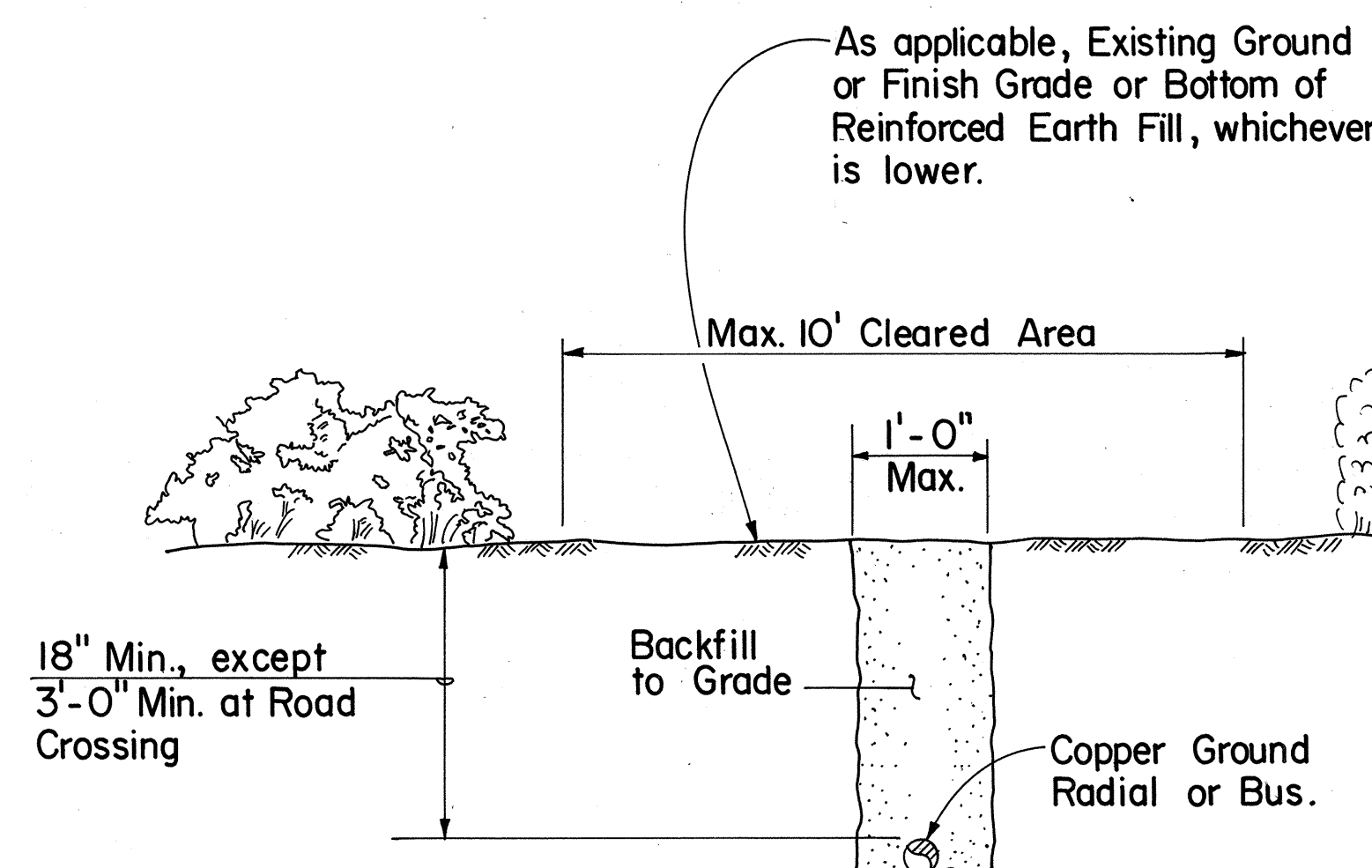


OUTER PERIPHERAL BUS CONNECTION (ELEVATION VIEW)

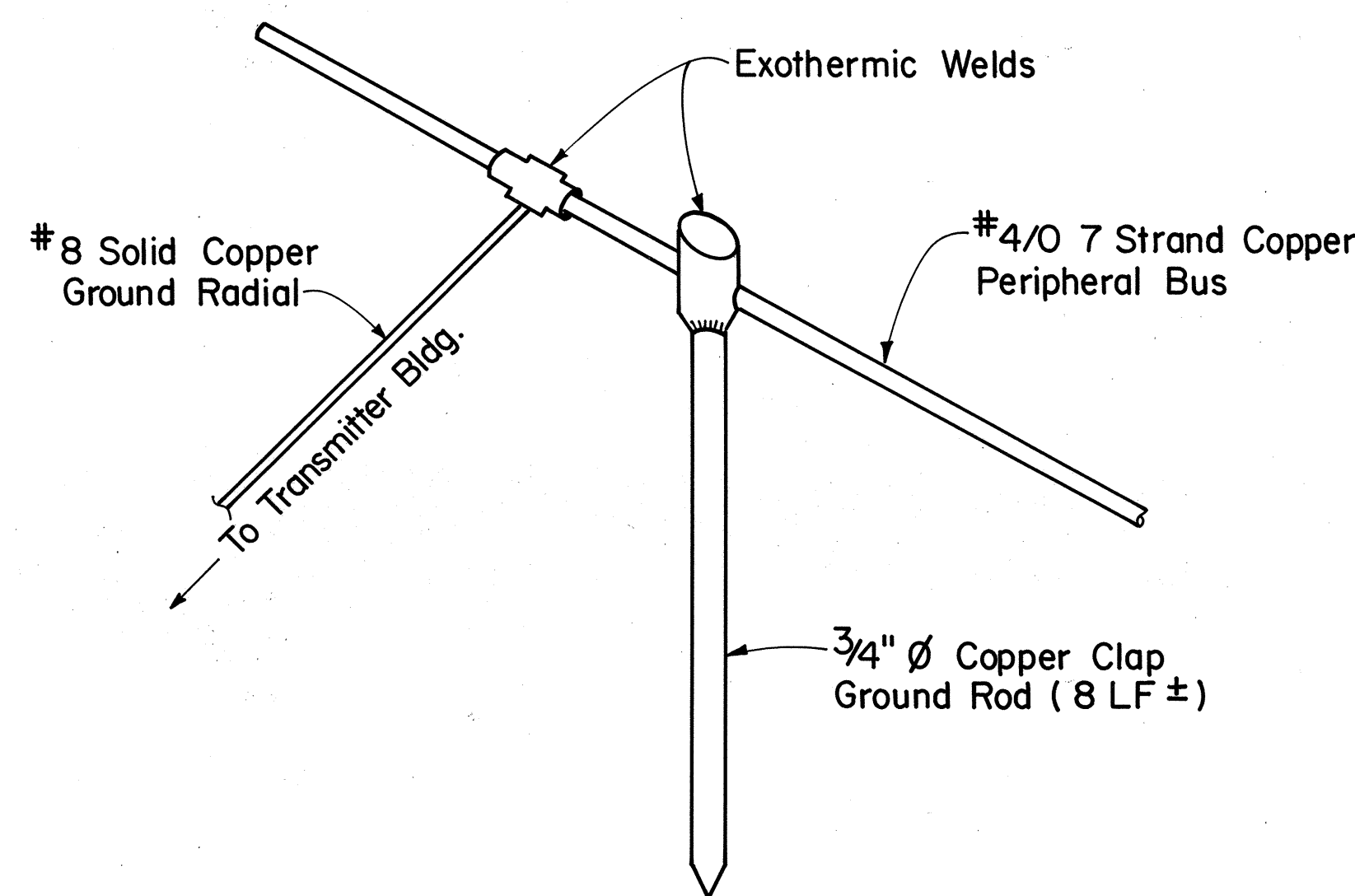


CONNECTION AT INTERSECTION OF GROUND WIRES (PLAN VIEW)

TYPICAL WELDS FOR GROUND SYSTEM CONNECTION

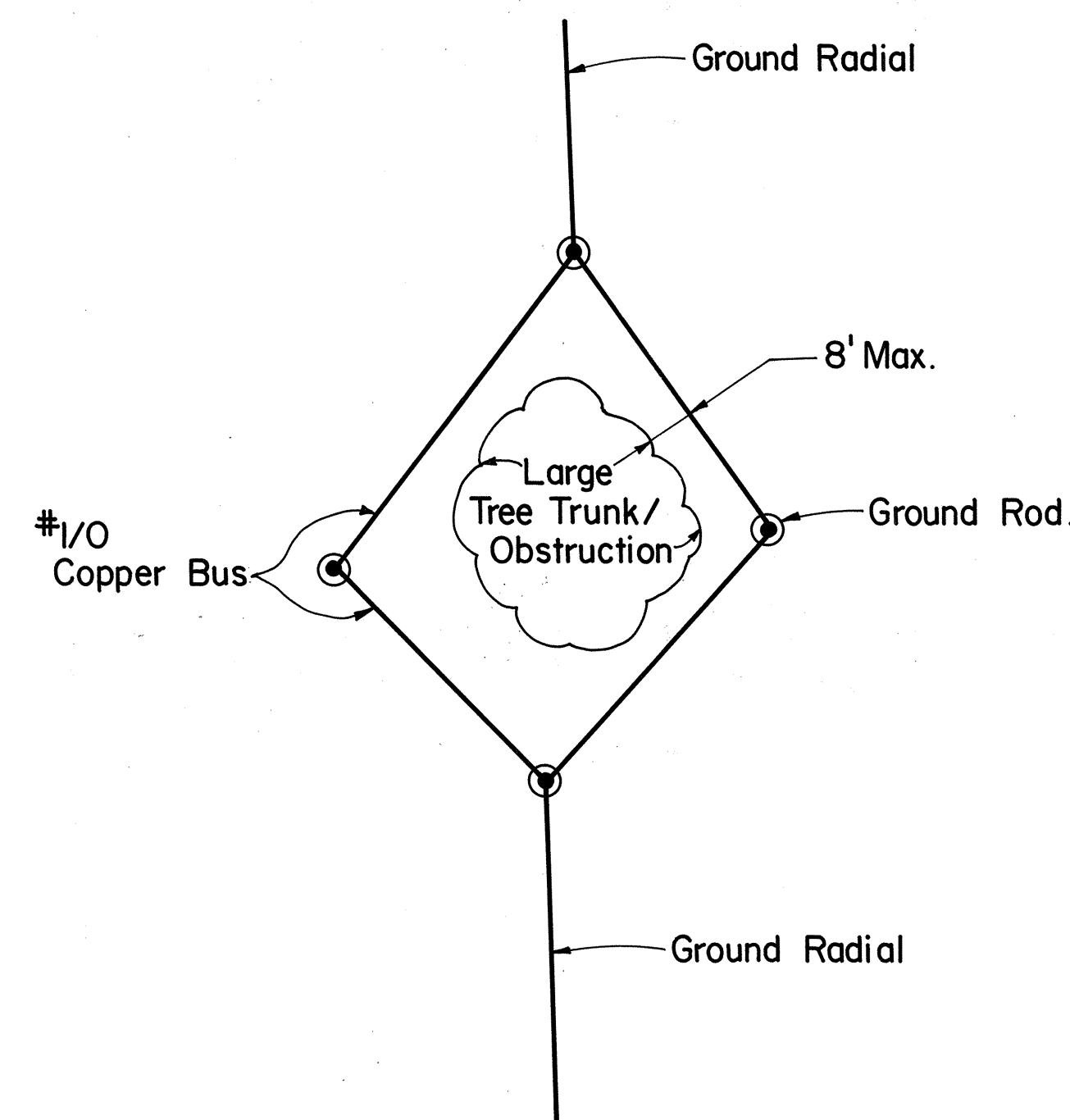


TYPICAL TRENCH DETAIL



DETAIL 2 OM-1 OM-2

TYPICAL DETAIL OF GROUND RADIAL CONNECTION TO PERIPHERAL BUS



TYPICAL GROUND SYSTEM CONFIGURATION AROUND LARGE TREE/OBSTRUCTION

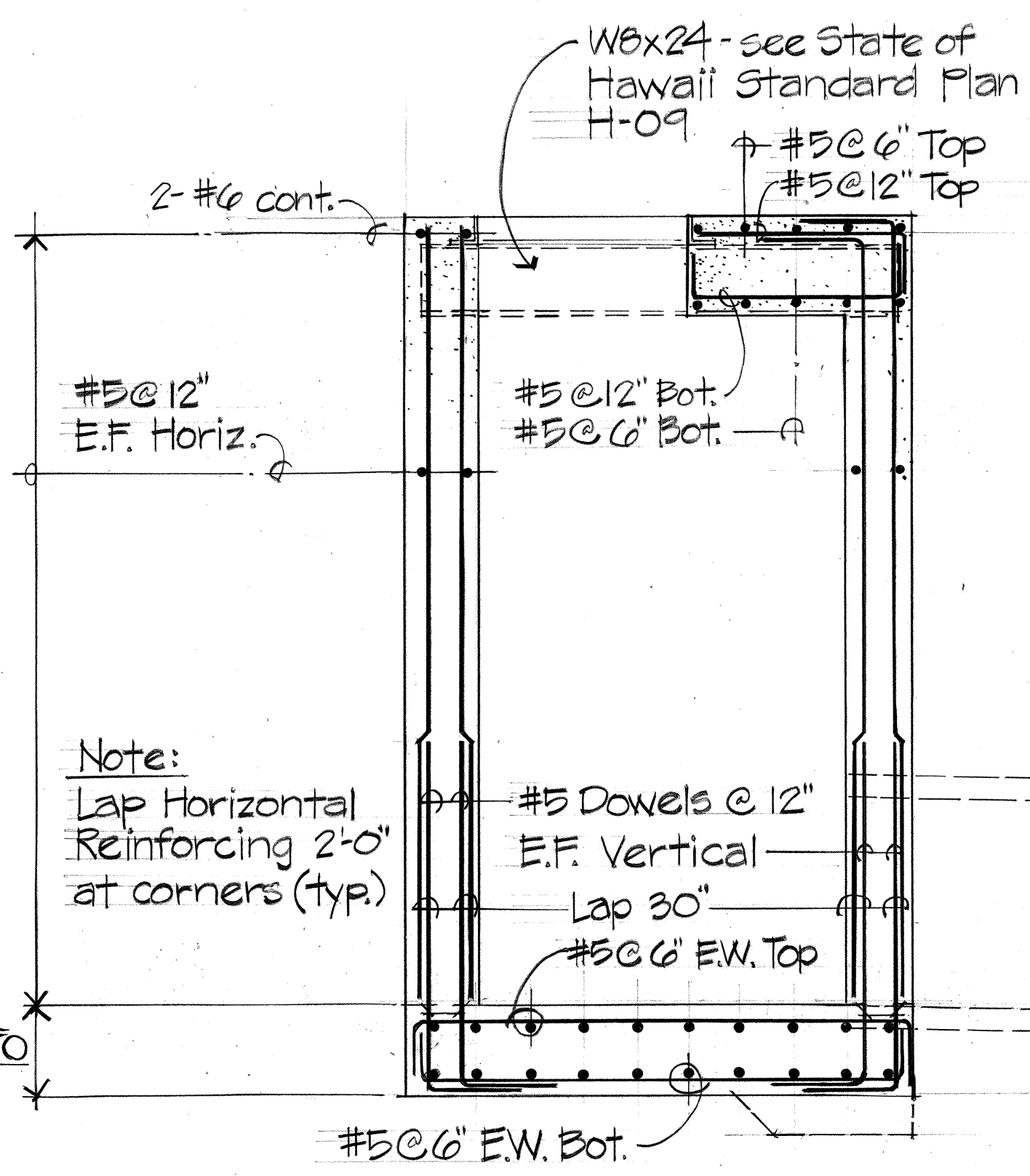
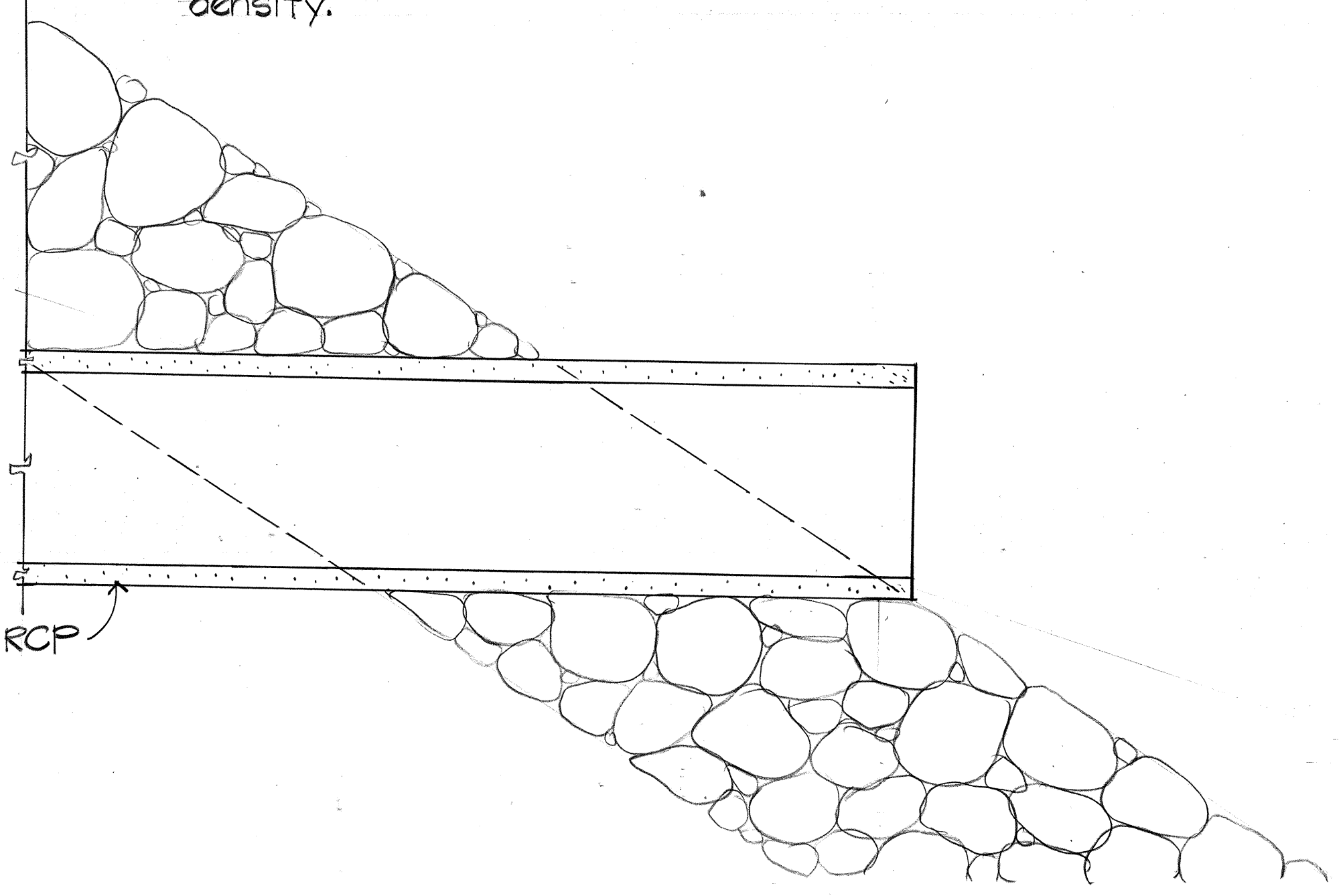
STATE OF HAWAII DEPARTMENT OF TRANSPORTATION HIGHWAYS DIVISION	
GROUND SYSTEM MODIFICATION PLAN	
HAIKU OMEGA TRANSMITTER FACILITY	
INTERSTATE ROUTE H-3 HAIKU VALLEY BRIDGES F.A.I. PROJECT NO. I-H3-1(52)	
SCALE: NOT TO SCALE	DATE: JULY 1988
SHEET No. OM-2 OF 3 SHEETS	

AS BUILT

74

FED. ROAD DIST. NO.	STATE	FED. AID PROJ. NO.	FISCAL YEAR	SHEET NO.	TOTAL SHEETS
HAWAII	HAW.	I - H3 - (52)	1988	C.O.75 S-1	75

- Notes:
1. Reinforcing in Drop Inlet to be considered incidental to Drop Inlet.
 2. Frame and Grate to be considered incidental to Drop Inlet.
 3. Bottom of Drop Inlet to bear on firm natural Cinder Material or imported Borrow compacted to 95% of maximum dry density.

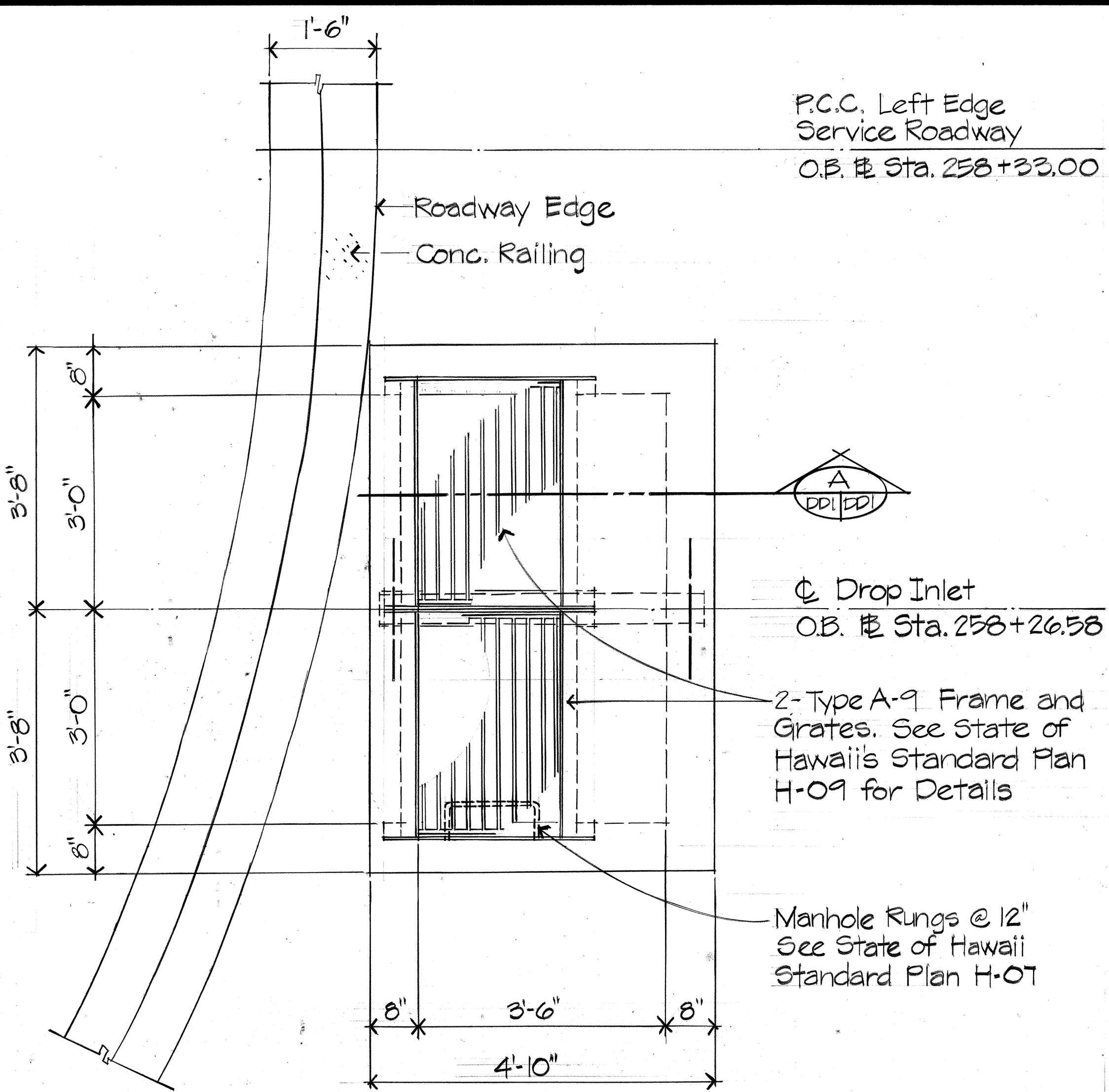


Note:
Lap Horizontal
Reinforcing 2'-0"
at corners (typ.)

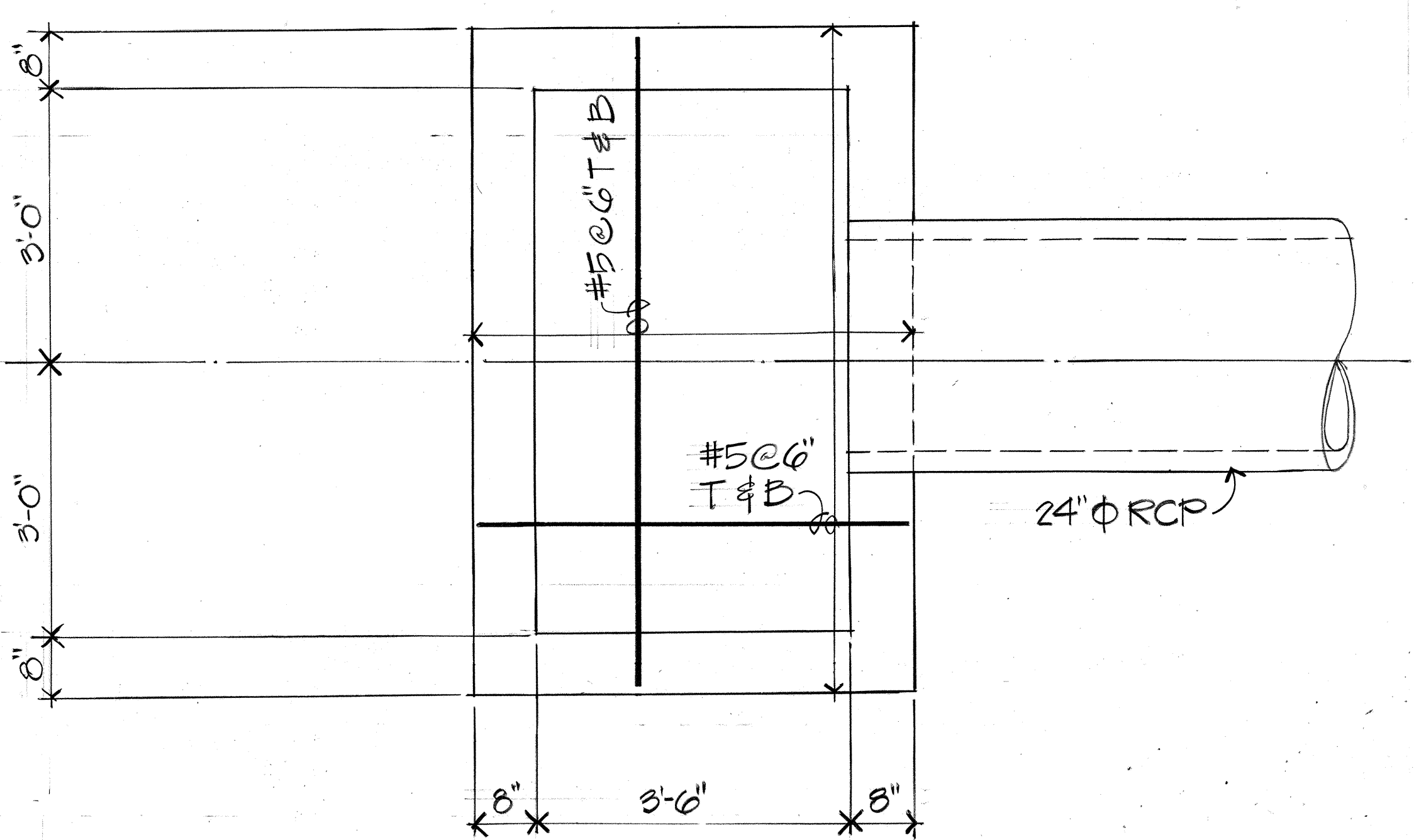
For balance of Details for
Drop Inlet see State of
Hawaii Standard Plan H-04

SECTION

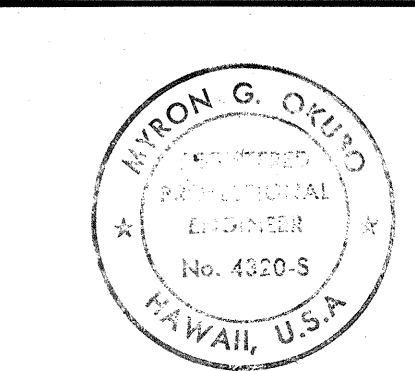
Scale: 3/4" = 1'-0"



DROP INLET PLAN
Scale: 3/4" = 1'-0"



DROP INLET FOUNDATION PLAN
Scale: 3/4" = 1'-0"



THIS WORK WAS PREPARED BY
ME OR UNDER MY SUPERVISION
Myron Okubo

STATE OF HAWAII
DEPARTMENT OF TRANSPORTATION
HIGHWAYS DIVISION

DROP INLET
O.B. & STA. 258+26.58
INTERSTATE ROUTE H-3
F.A.I. PROJECT NO. I-H3-1 (52) :

SCALE: AS NOTED DATE: JULY 1988
SHEET NO. DD-1 OF 2 SHEETS

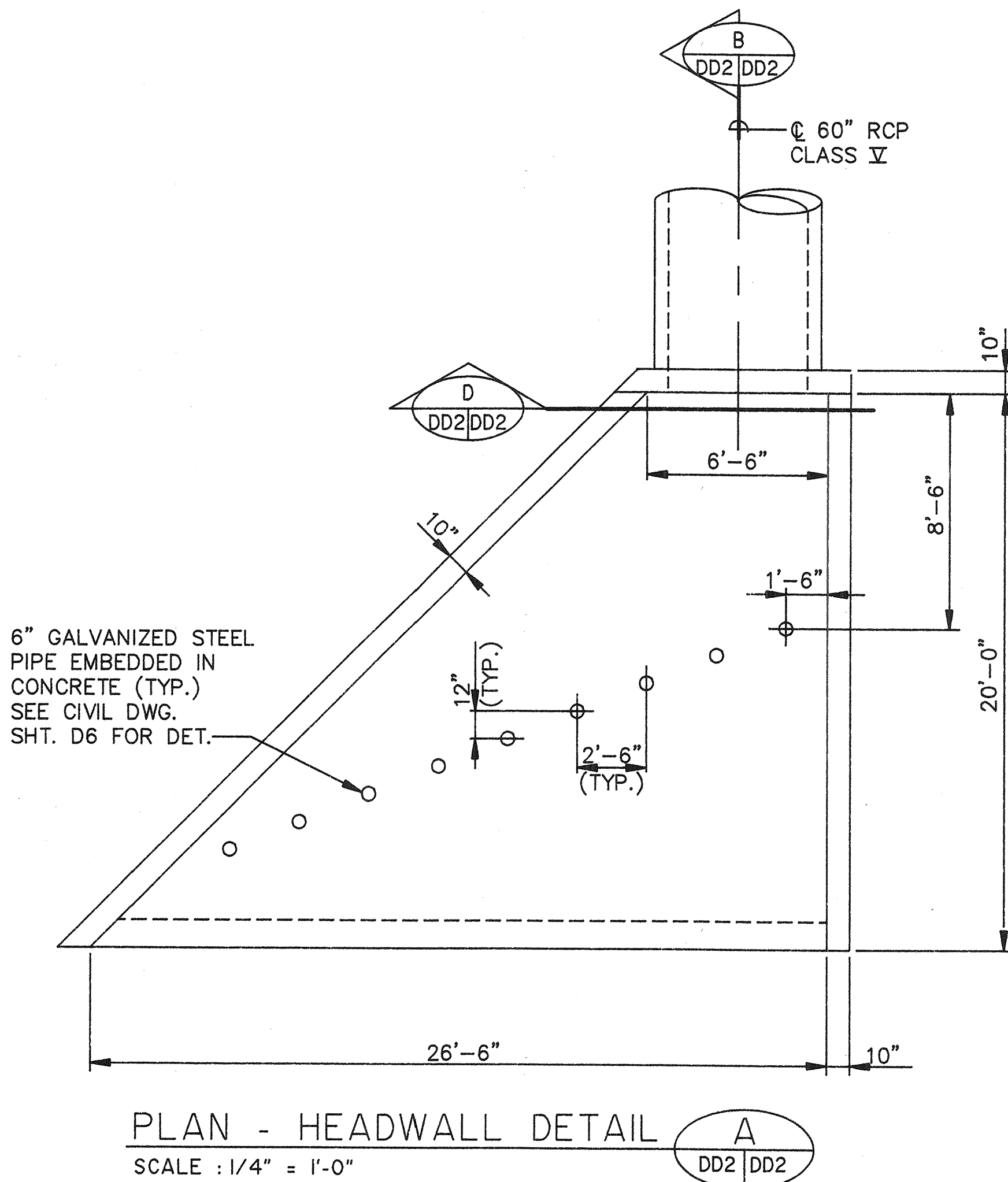
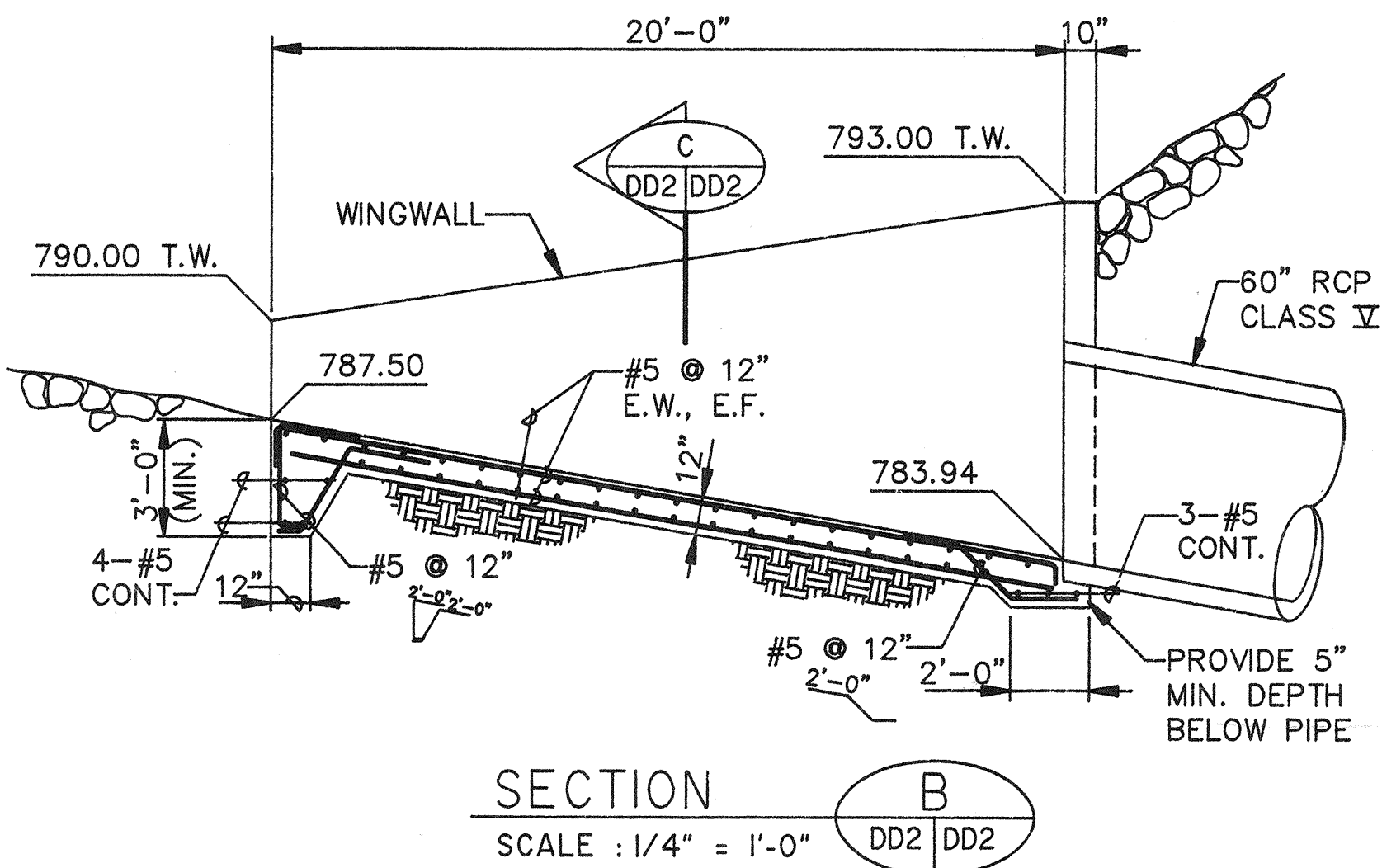
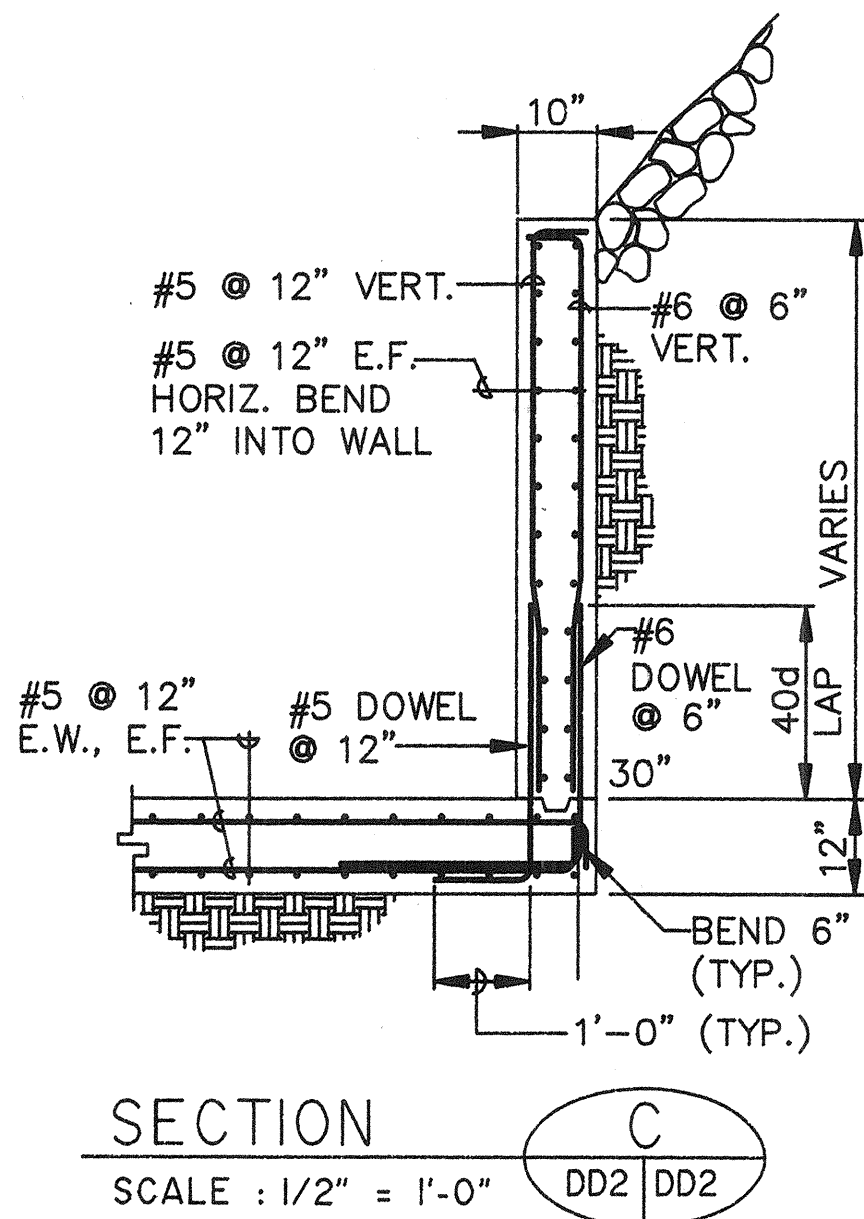
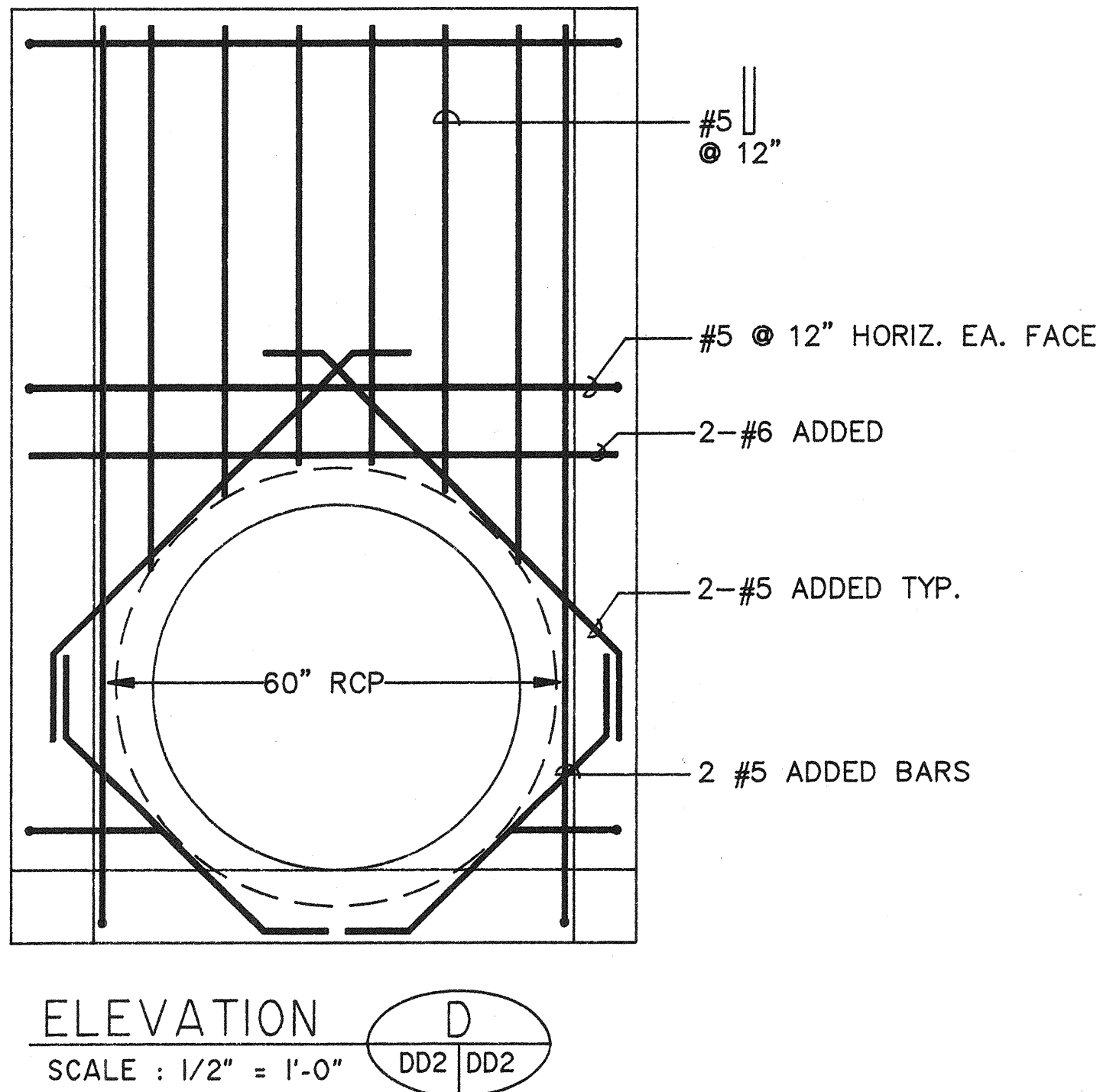
9/27/89	Revised Details 2 & A
9/1/89	Added Sheet
DATE	REVISION

AS BUILT

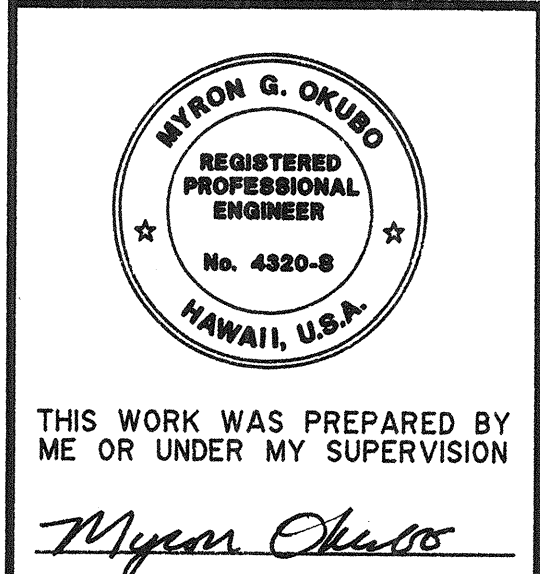
C.O.75 S-1

SURVEY PLOTTED BY	DATE
DRAWN BY	
DESIGNED BY	
CHECKED BY	
NOTE BOOK	
No.	

FED. ROAD DIST. NO.	STATE	FED. AID PROJ. NO.	FISCAL YEAR	SHEET NO.	TOTAL SHEETS
HAWAII	HAW.	I-H3-1 (52)	1988	C.O. 75 S-2	75



NOTE:
 SEE STANDARD PLAN SHEET H-04 FOR BALANCE OF REINFORCING DETAILS.



STATE OF HAWAII
 DEPARTMENT OF TRANSPORTATION
 HIGHWAYS DIVISION

HEADWALL

O.B. STA. 258+26.58
 INTERSTATE ROUTE H-3
 F.A.I. PROJECT NO. I-H3-1 (52):

9/27/89 ADDED SHEET
 DATE REVISION

SCALE: AS NOTED DATE: JULY 1988
 SHEET No. DD2 OF 2 SHEETS

AS BUILT

C.O. 75 S-2