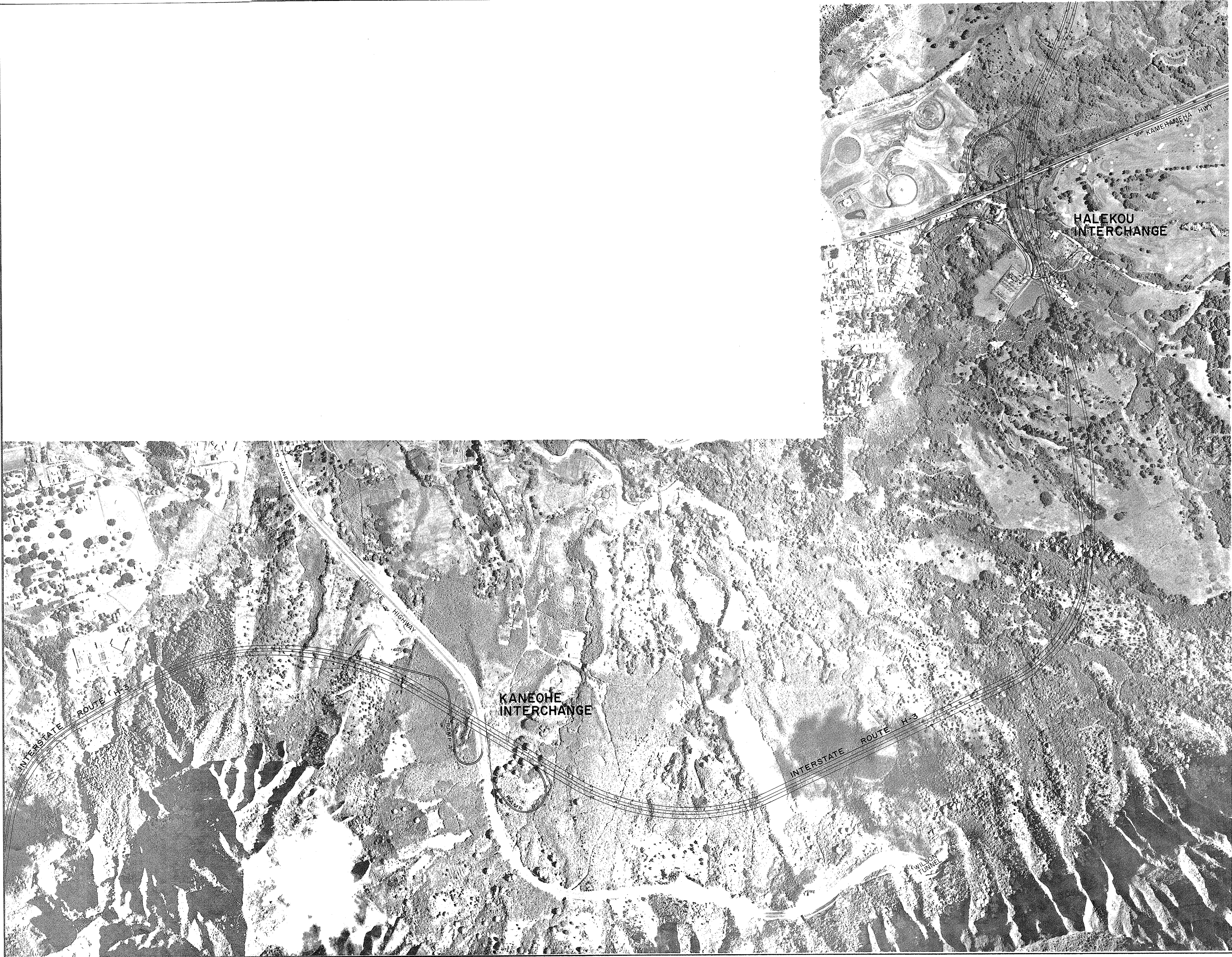


FED. ROAD DIST. NO.	STATE	FED. AID PROJ. NO.	FISCAL YEAR	SHEET NO.	TOTAL SHEETS
HAWAII	HAW.	I-H3-1(3)	1968	2	8



STATE OF HAWAII DEPARTMENT OF TRANSPORTATION HIGHWAYS DIVISION				
INTERSTATE ROUTE H-3				
GENERAL LOCATION PLAN PROJECT NO. I-H3-1(3) WINDWARD HIGHWAYS				
PARSONS BRINCKERHOFF - HIROTA ASSOCIATES HONOLULU, HAWAII				
DATE 12/20/68 REVISED	SCALE 1"=500'	SHEET NO. 2 OF 8 SHEETS	DWG. NO. H-3	REV. 1