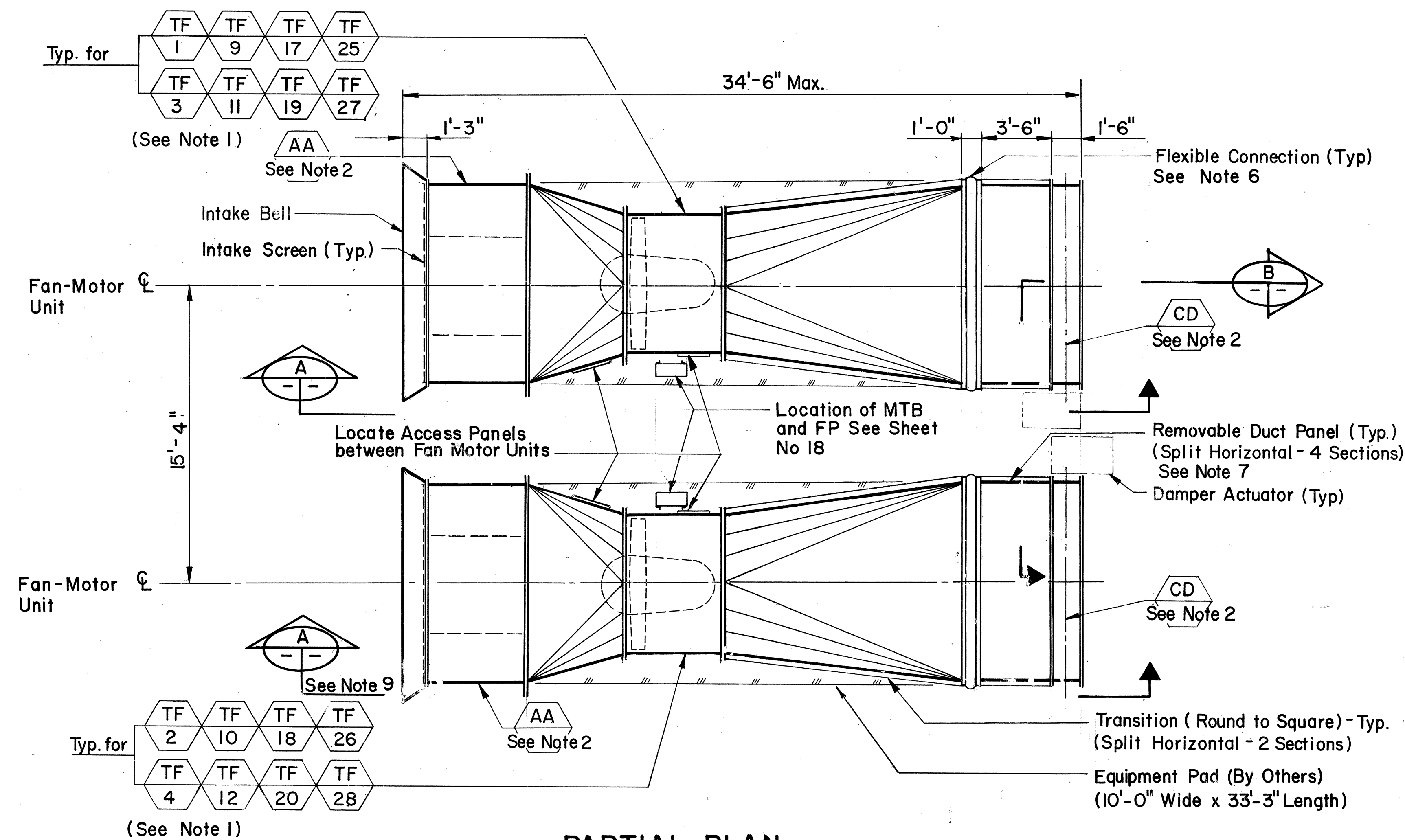
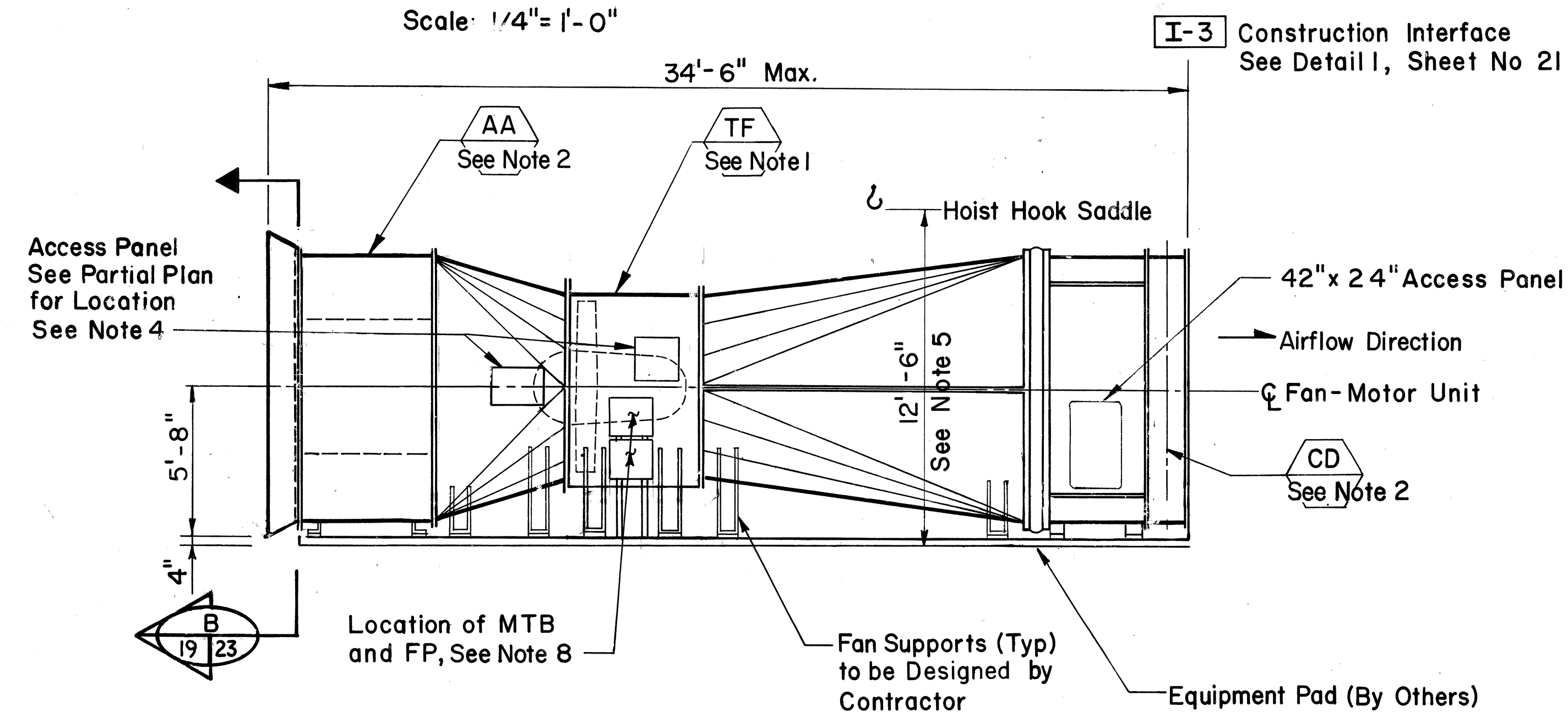


FED. ROAD DIST. NO.	STATE	FED. AID PROJ. NO.	FISCAL YEAR	SHEET NO.	TOTAL SHEETS
HAWAII	HAW.	I-H3-1(60)	1990	19	24



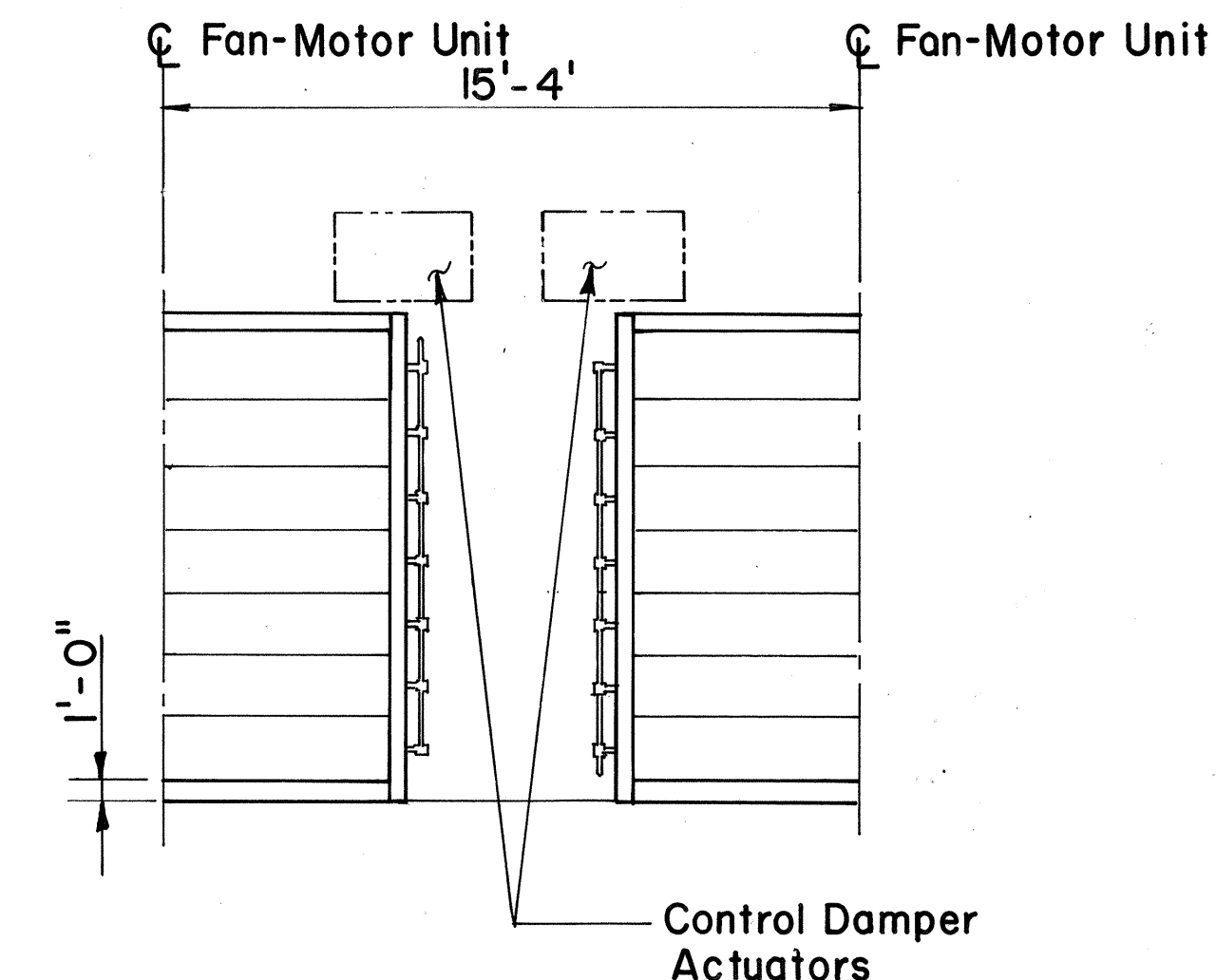
PARTIAL PLAN SUPPLY FAN ASSEMBLIES

Scale: $1/4" = 1' - 0"$



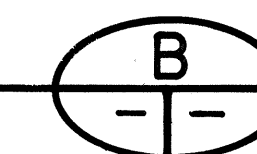
SECTION

Scale: $1/4" = 1'-0"$



SECTION

Scale: 1/4" = 1'-0"



NOTES

1. For the Location of Each Fan-Motor Unit, See Plan Sheet No's: 8 through 15.
2. Equipment Numbering is Identified in the Equipment Schedules with an Associated Fan Motor Unit. See Tunnel Ventilation Equipment Schedule, Sheet No. 17.
3. For Symbols and Abbreviations, See Sheet No. 4.
4. Access Panels on Fans Casing and Transition Ductwork shall be provided for (1) Blade and Hub Inspection and (2) Blade Adjustments. Access Panels shall be Sized and Located by the Contractor
5. Maximum Hook Height for Servicing the Fan-Motor Units Shall be 12'-6". Hook is Part of Monorail Hoist to be Centered over Fan-Motor Assembly and Installed at a Future Date.
6. Locate Flexible Connection between Fan Casing and Construction Interface. Flexible Connection shall be Sized and Located by the Contractor.
7. Removable Duct Panel shall Permit Removal of Damper Assembly without Moving Actuator. Damper shall be Removed in Access Space between Fan-Motor Units.
8. Motor Terminal Box (MTB) and Fan Panel (FP) shall be Freestanding and Sized and Located by Contractor. Support Box and Panel from Pair of Galvanized Channels Anchored to Equipment Pad.
9. Section is Similar to Section A Except for Location of Damper Actuator, Access Panels, MTB and FP.

ORIGINAL PLAN	SURVEY PLOTTED BY _____	DATE _____
NOTE BOOK	DRAWN BY <u>B. HARDENBROOK</u>	<u>11/15/89</u>
	DESIGNED BY <u>R. MATRISIAN</u>	<u>10/31/89</u>
	QUANTITIES BY _____	_____
No. _____	CHECKED BY <u>J. QUE</u>	<u>1/4/89</u>



THIS WORK WAS PREPARED BY ME
OR UNDER MY SUPERVISION

John A.

STATE OF HAWAII
DEPARTMENT OF TRANSPORTATION
HIGHWAYS DIVISION

SUPPLY FAN PLAN & SECTIONS F & I VENTILATION FANS

INTERSTATE ROUTE H-3
F.A.I PROJ. NO. I-H3-1 (60)

SCALE: 1/4" = 1'-0"

DATE: NOV 1989

SHEET No. 19 OF 24 SHEETS