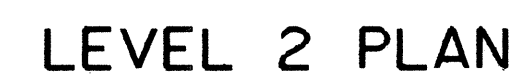

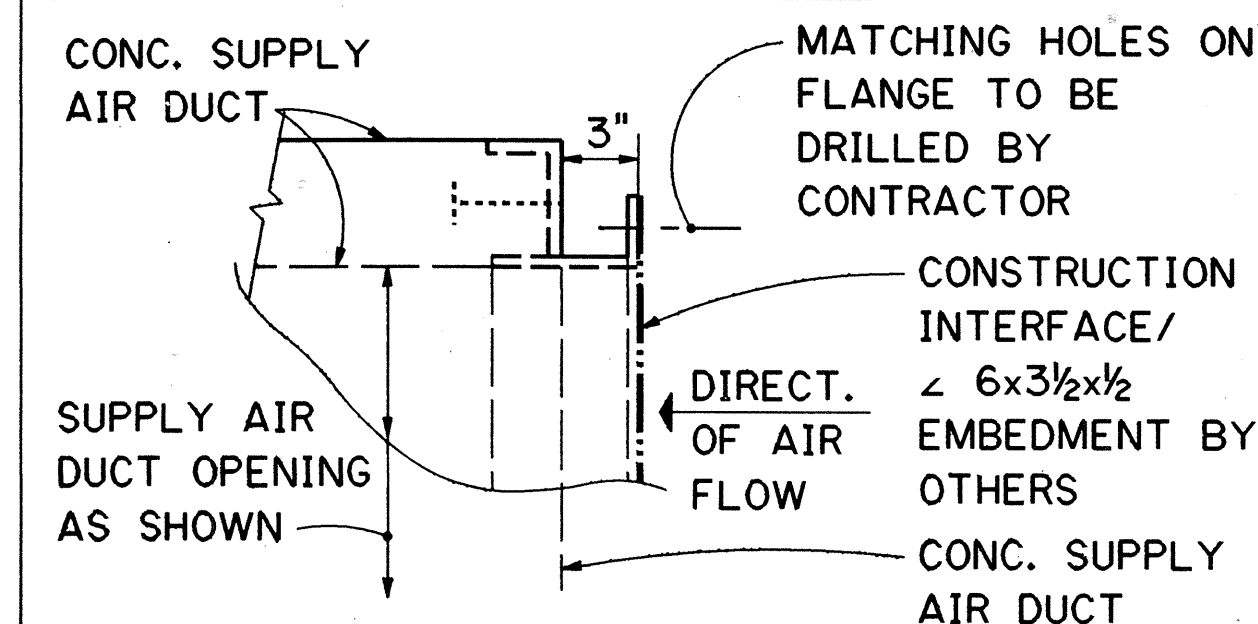


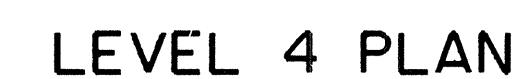
N



CONTRACTOR SHALL PROVIDE TEMPLATES FOR LOCATING CONCRETE INSERTS FOR MOUNTING ATTENUATOR AND SPECIFYING BOLT SIZE REQUIRED. INSERTS SHALL BE FURNISHED BY OTHERS.
FOR DETAIL OF INTERFACE SEE SHEET NO. 22.



- ### LEVEL 3 PLAN



| | |
|------|----------|
| | |
| | |
| | |
| | |
| | |
| | |
| | |
| | |
| DATE | REVISION |

STATE OF HAWAII
DEPARTMENT OF TRANSPORTATION
HIGHWAYS DIVISION

HALAWA PORTAL BUILDING

IB - PLANS

F & I VENTILATION FANS

INTERSTATE ROUTE H-3

F.A.I. PROJ. NO. I-H3-I(60)

SCALE: $\frac{1}{8}" = 1'-0"$ DATE: NOV 1969

SHEET NO.
8
OF
24
SHEETS

| | | |
|---------------|--------------------------|----------|
| ORIGINAL PLAN | SURVEY PLOTTED BY | DATE |
| | DRAWN BY CADD | 11/17/89 |
| NOTE BOOK | DESIGNED BY R. MATRISIAN | 10/01/89 |
| | QUANTITIES BY | |
| NO. | CHECKED BY J. N. QUE | 12/04/88 |

2410V164 2410: V164 MS0004.FGB;1 13MAY89-09.02.41