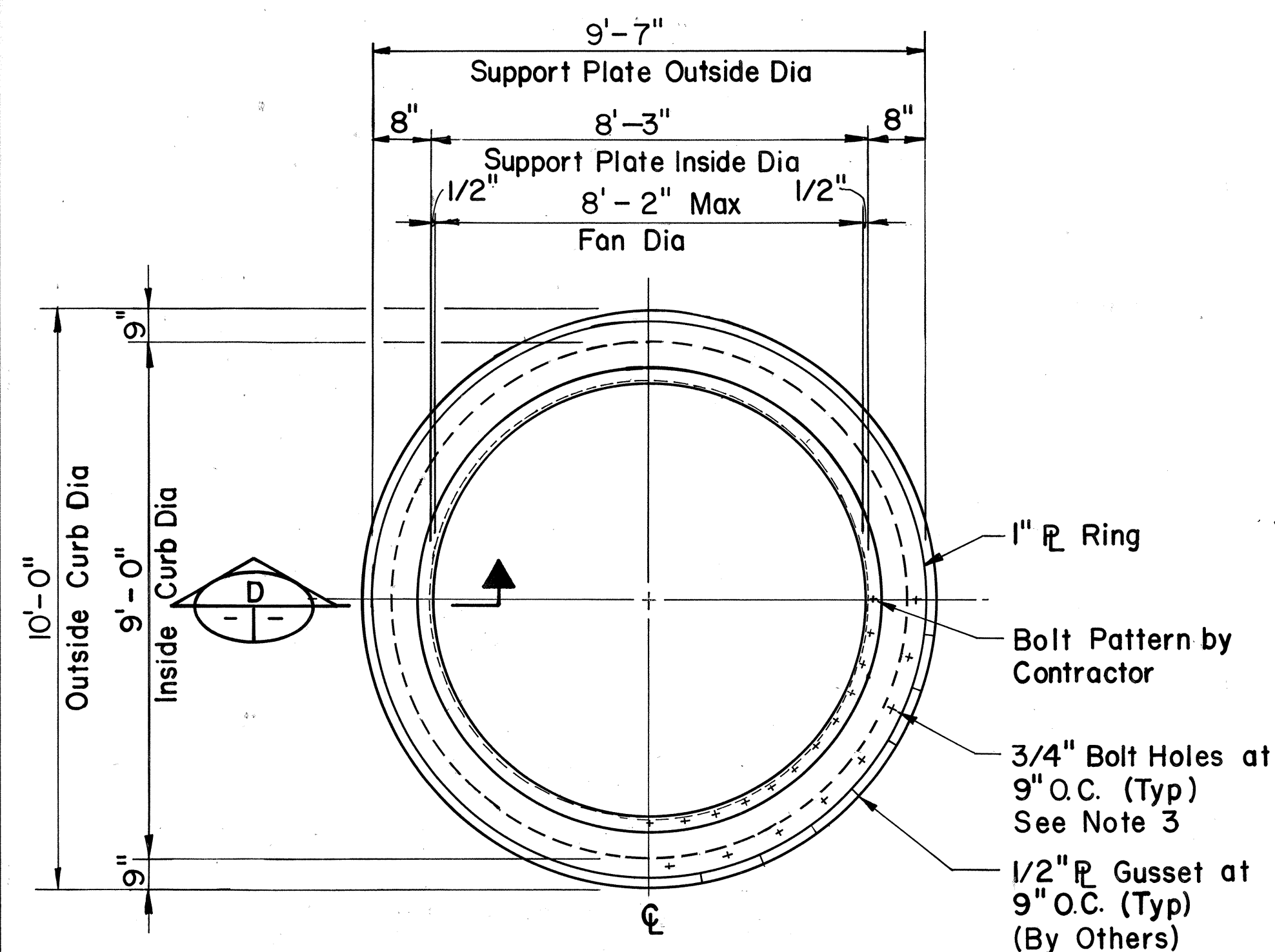
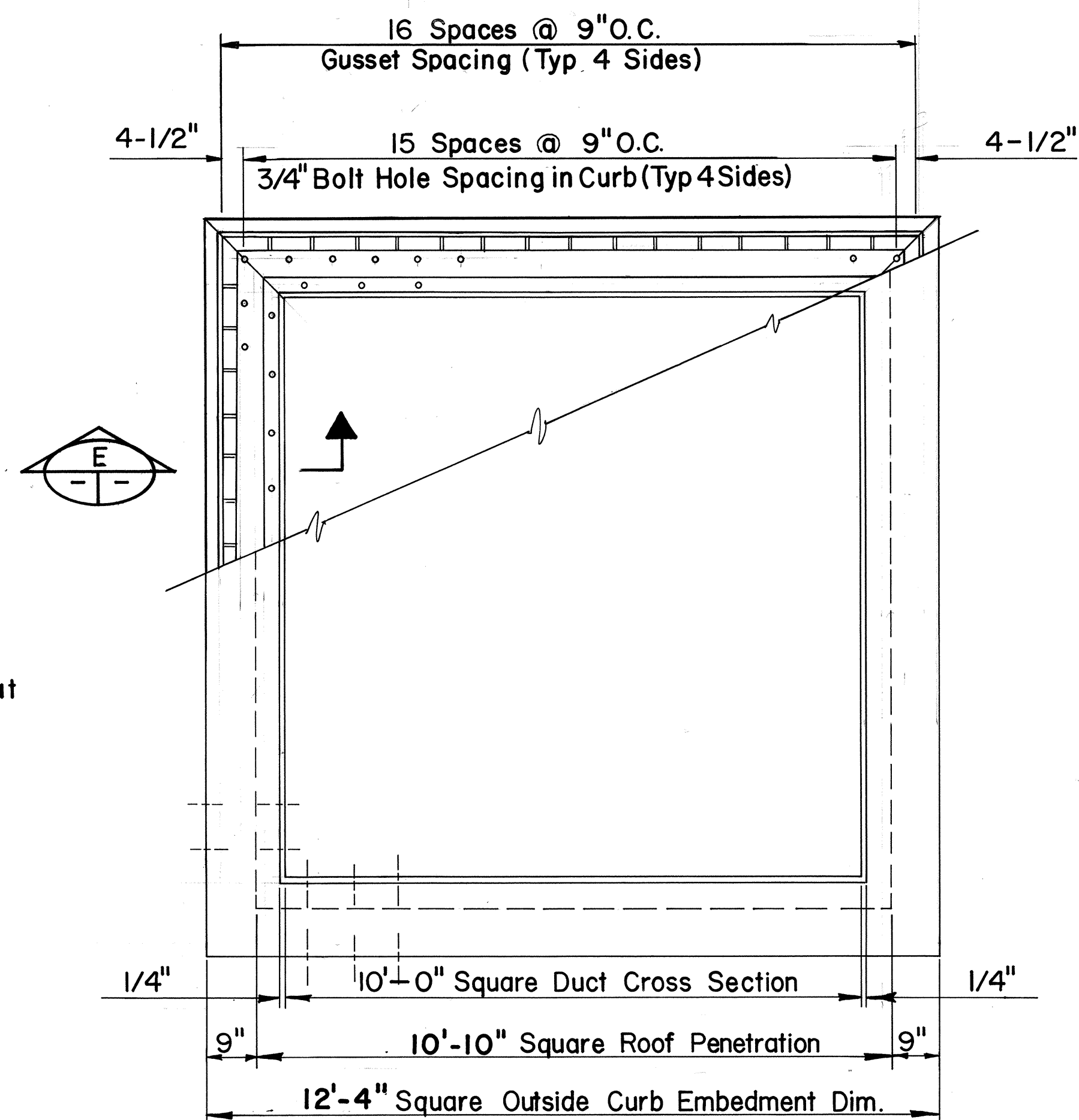


FED. ROAD DIST. NO.	STATE	FED. AID PROJ. NO.	FISCAL YEAR	SHEET NO.	TOTAL SHEETS
HAWAII	HAW.	I-H3-1 (60)	1990	21	24



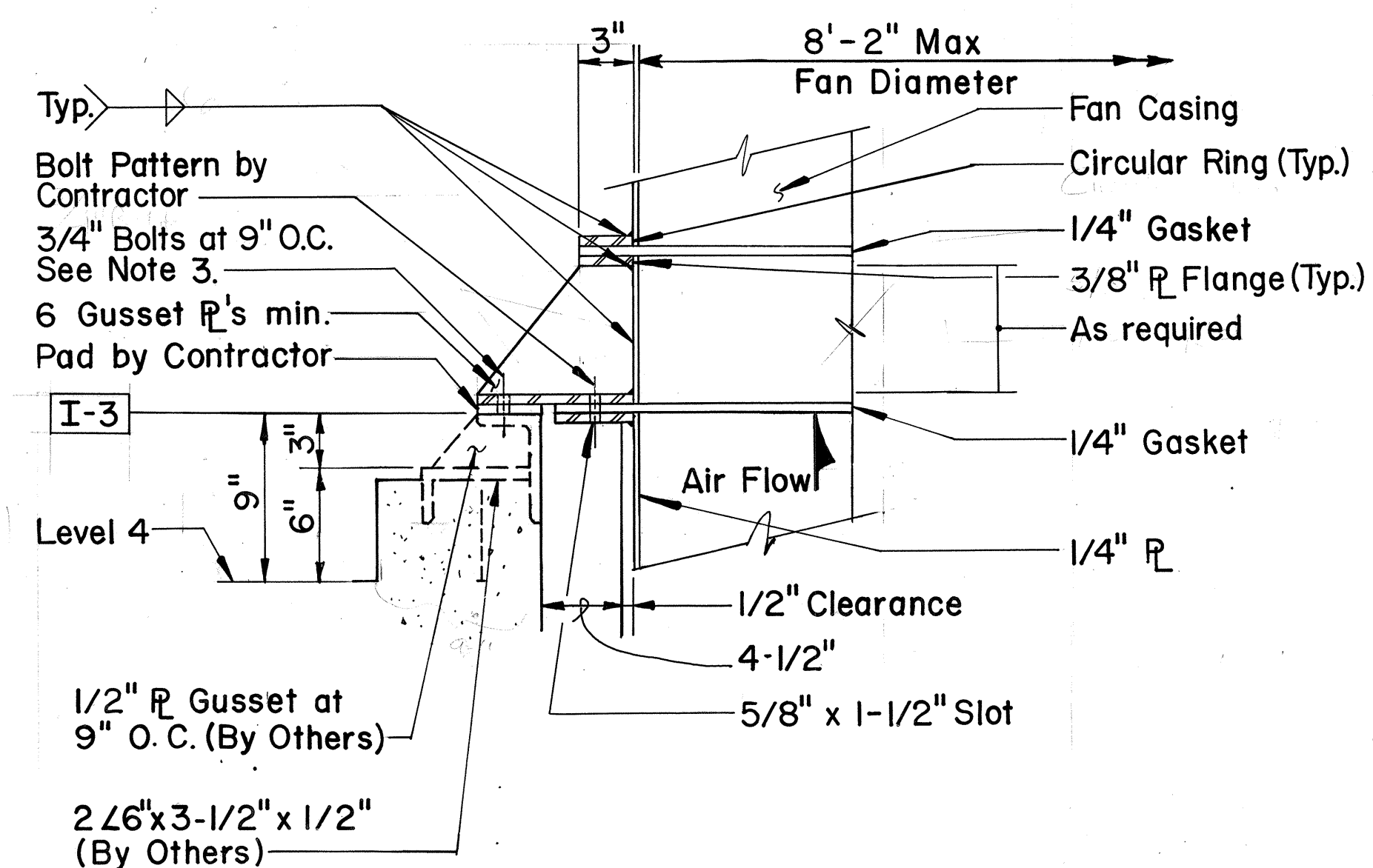
FAN SUPPORT

SECTION A
NTS 20/21



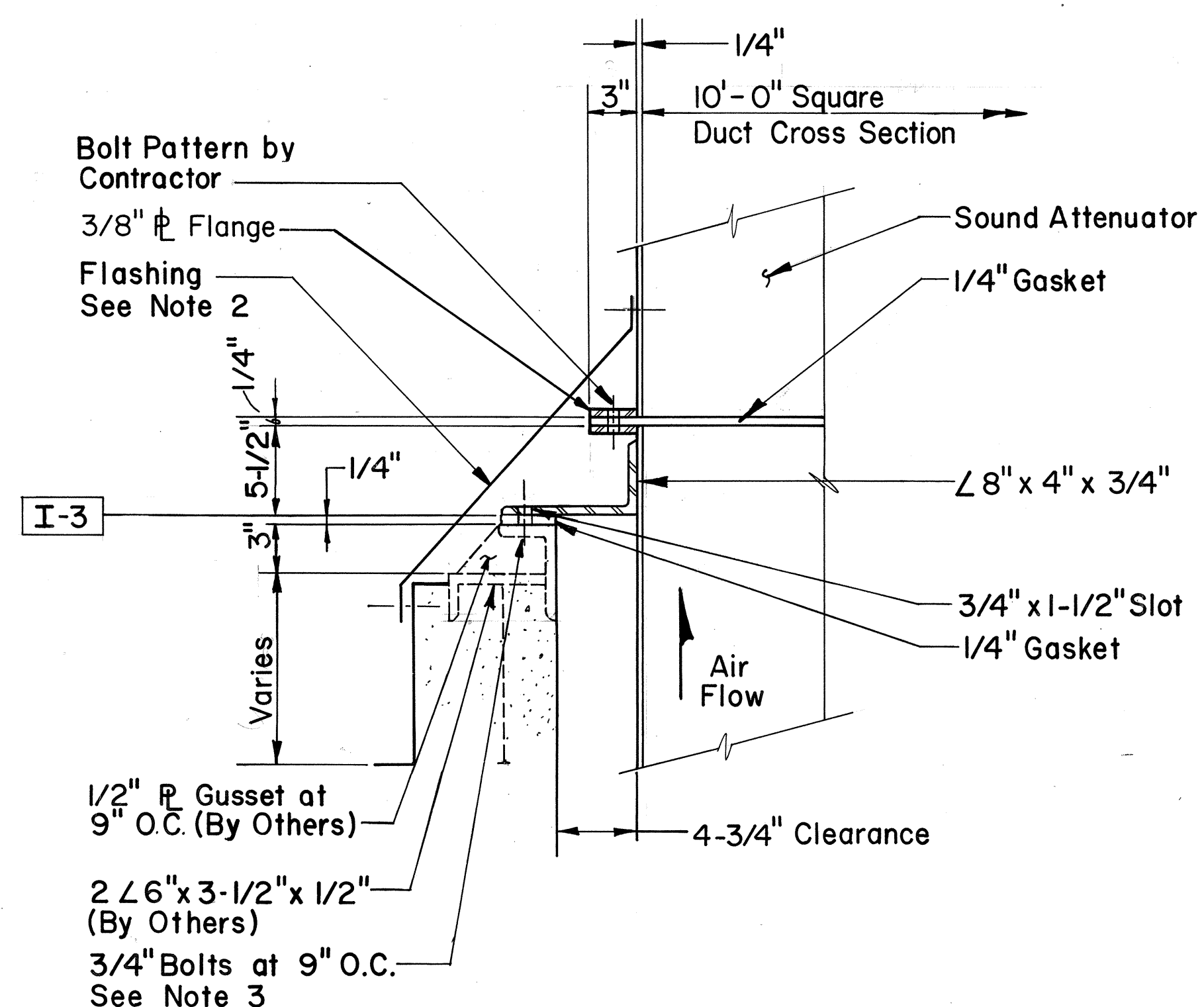
ROOF PENETRATION

SECTION B
NTS 20 | 21



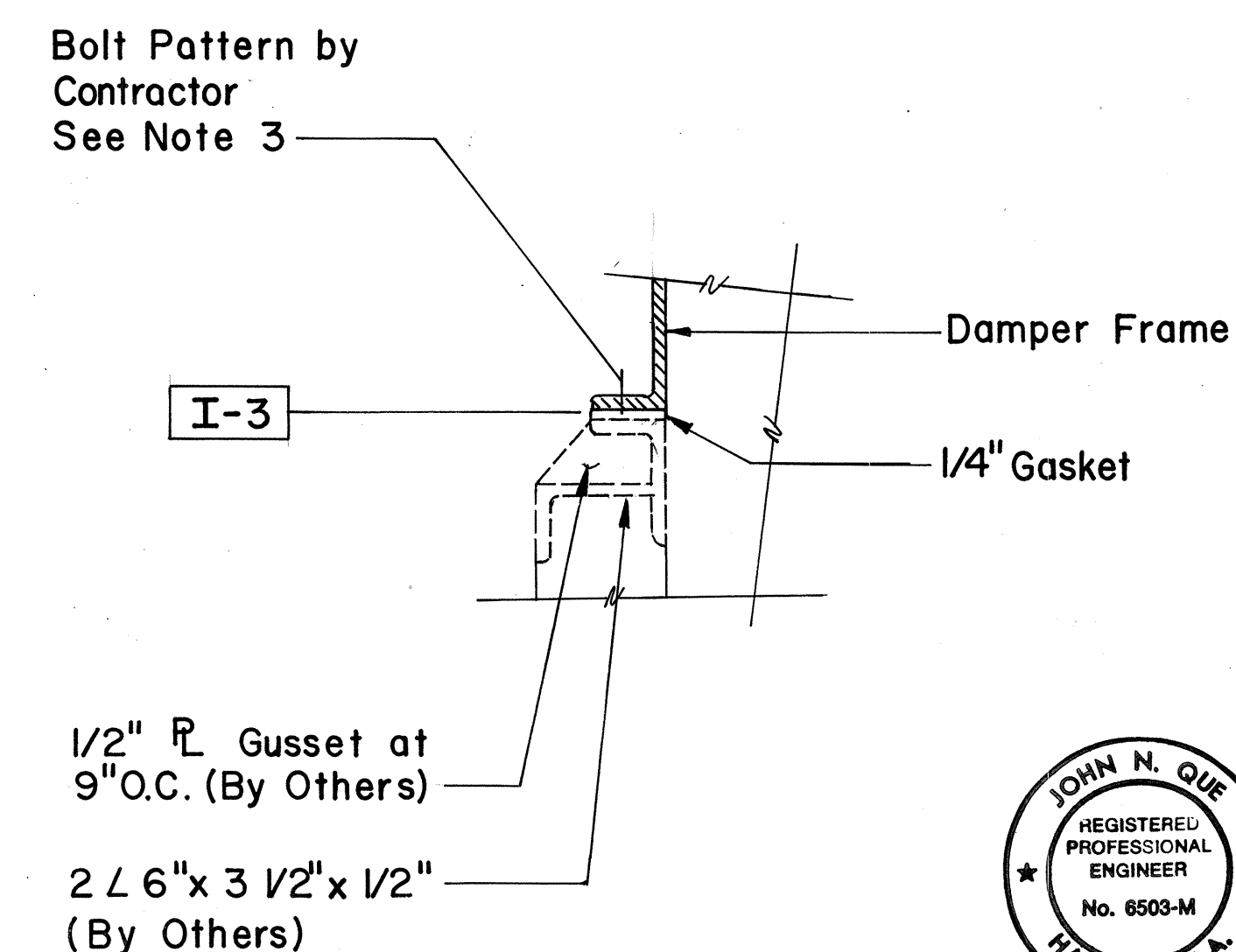
SECTION

Scale: 1-1/2" = 1'-0"



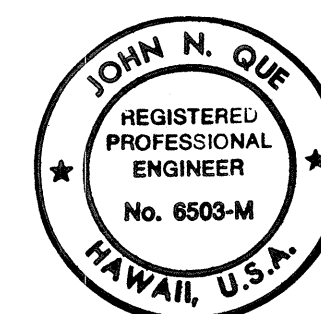
SECTION

Scale: 1-1/2" = 1'-0"



DETAIL

Scale: $1\frac{1}{2}'' = 1'-0''$



THIS WORK WAS PREPARED BY ME
OR UNDER MY SUPERVISION

NOTES

1. For Symbols and Abbreviations See Sheet No. 4.
2. Flashing Shall be 14 Gage Alloy 317 Stainless Steel with Sheet Metal Screws of the same material.
3. Bolt Pattern Shall be Drilled in the Field by Contractor.

[illegible]

STATE OF HAWAII
DEPARTMENT OF TRANSPORTATION
HIGHWAYS DIVISION

EXHAUST FAN DETAILS

F&I VENTILATION FANS

INTERSTATE ROUTE H-3
F.A.I. PROJ. NO. I-H3-1 (60)

SCALE:AS SHOWN

DATE: NOV 1989

SHEET No. 21 OF 24 SHEETS

ORIGINAL PLAN	SURVEY PLOTTED BY <u>B. HARDENBROOK</u> DATE <u>1/26/88</u>
NOTE BOOK	DRAWN BY _____
	DESIGNED BY <u>R. MATRISIAN</u>
	QUANTITIES BY _____
No. _____	CHECKED BY <u>J. QUE</u> DATE <u>1/6/89</u>