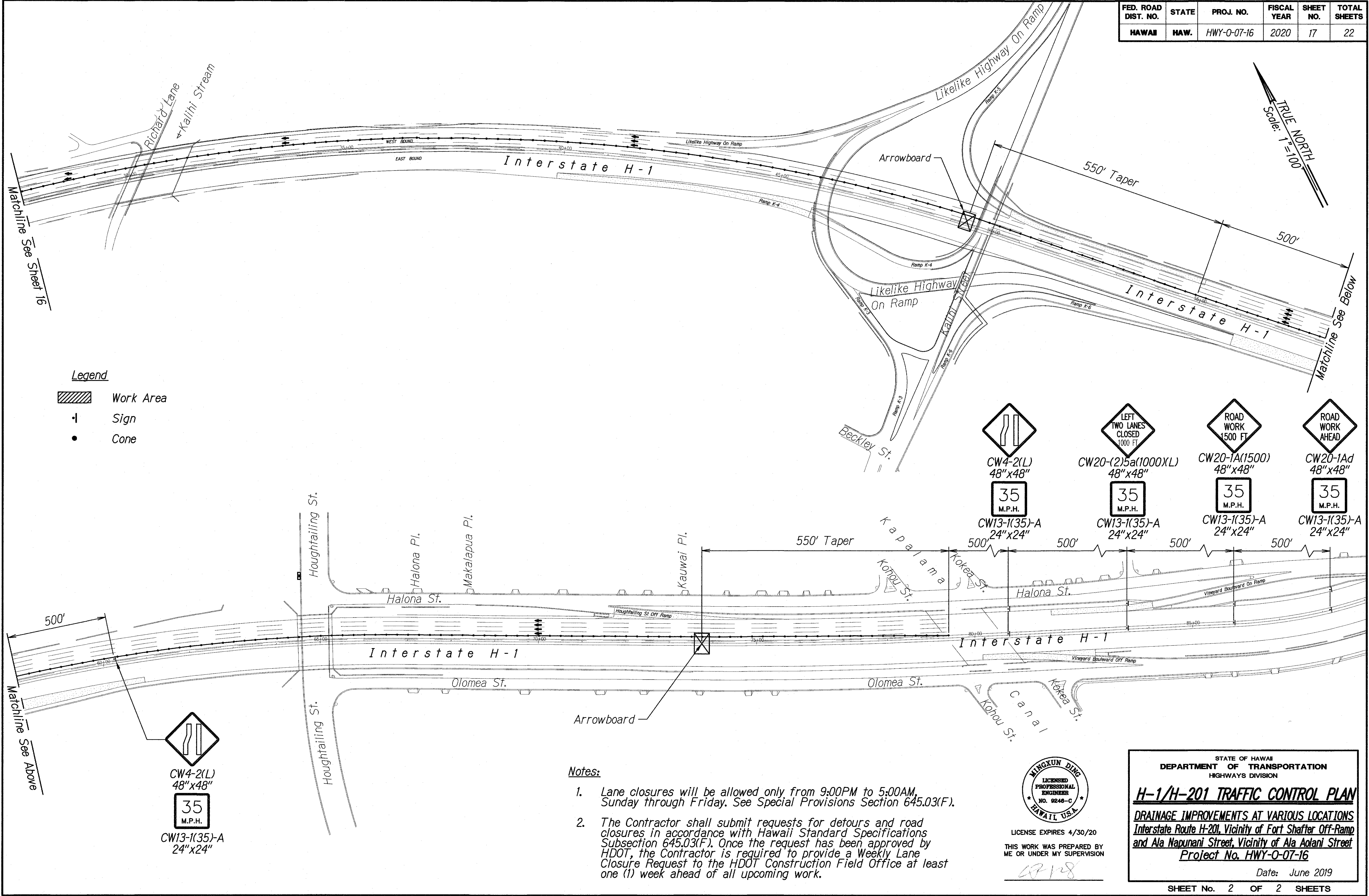




| FED. ROAD DIST. NO. | STATE | PROJ. NO.   | FISCAL YEAR | SHEET NO. | TOTAL SHEETS |
|---------------------|-------|-------------|-------------|-----------|--------------|
| HAWAII              | HAW.  | HWY-0-07-16 | 2020        | 17        | 22           |



- Legend**
- Work Area
  - Sign
  - Cone

|               |                   |      |
|---------------|-------------------|------|
| ORIGINAL PLAN | SURVEY PLOTTED BY | DATE |
| DESIGNED BY   | DRAWN BY          |      |
| CHECKED BY    | DESIGNED BY       |      |
| No.           | CHECKED BY        |      |

- Notes:**
- Lane closures will be allowed only from 9:00PM to 5:00AM, Sunday through Friday. See Special Provisions Section 645.03(F).
  - The Contractor shall submit requests for detours and road closures in accordance with Hawaii Standard Specifications Subsection 645.03(F). Once the request has been approved by HDOT, the Contractor is required to provide a Weekly Lane Closure Request to the HDOT Construction Field Office at least one (1) week ahead of all upcoming work.

**MINGXUN DING**  
 LICENSED PROFESSIONAL ENGINEER  
 NO. 9248-C  
 HAWAII, U.S.A.  
 LICENSE EXPIRES 4/30/20  
 THIS WORK WAS PREPARED BY ME OR UNDER MY SUPERVISION

STATE OF HAWAII  
 DEPARTMENT OF TRANSPORTATION  
 HIGHWAYS DIVISION

**H-1/H-201 TRAFFIC CONTROL PLAN**

**DRAINAGE IMPROVEMENTS AT VARIOUS LOCATIONS**  
 Interstate Route H-201, Vicinity of Fort Shafter Off-Ramp and Ala Napunani Street, Vicinity of Ala Aolani Street  
 Project No. HWY-0-07-16

Date: June 2019

SHEET No. 2 OF 2 SHEETS