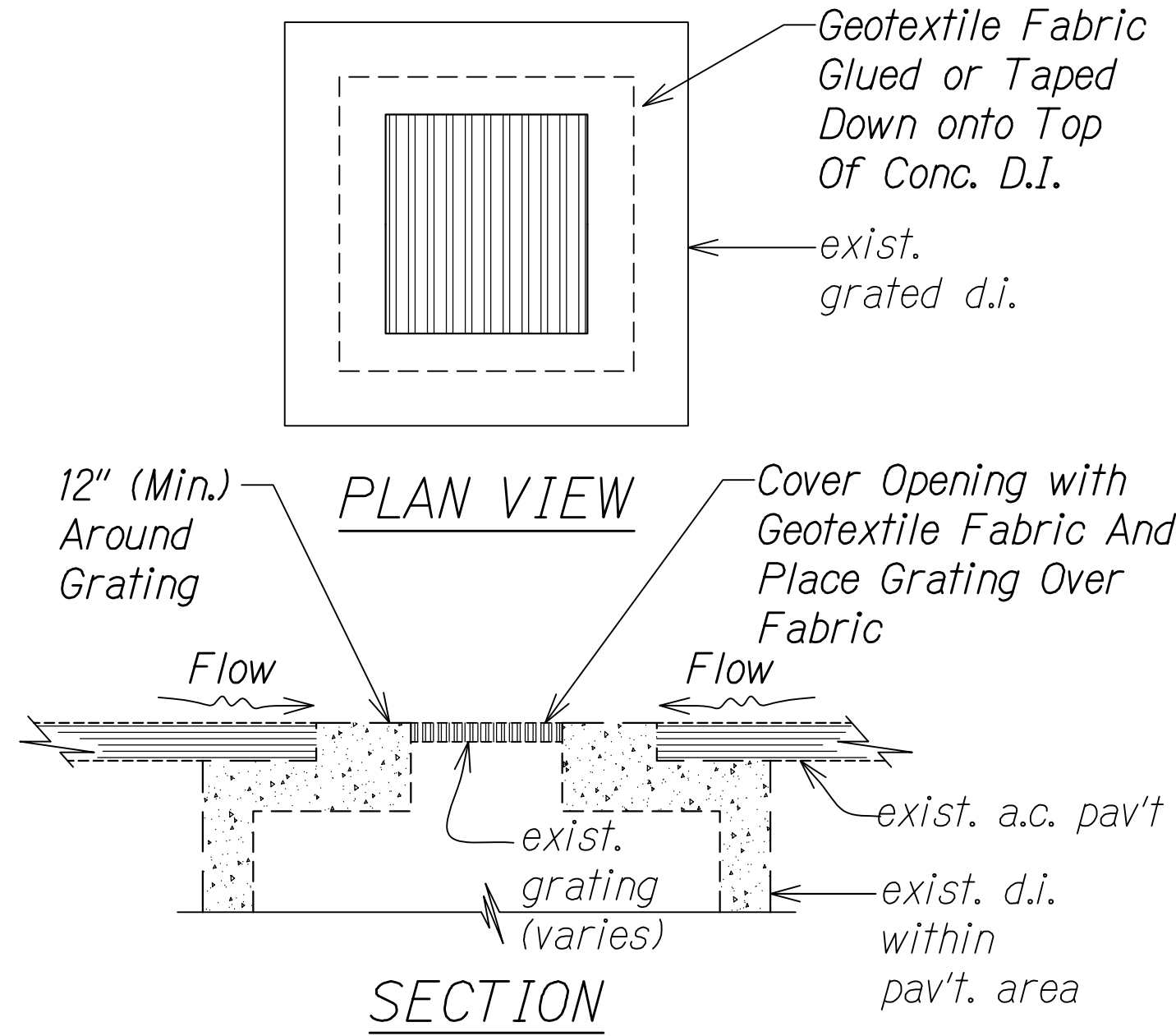
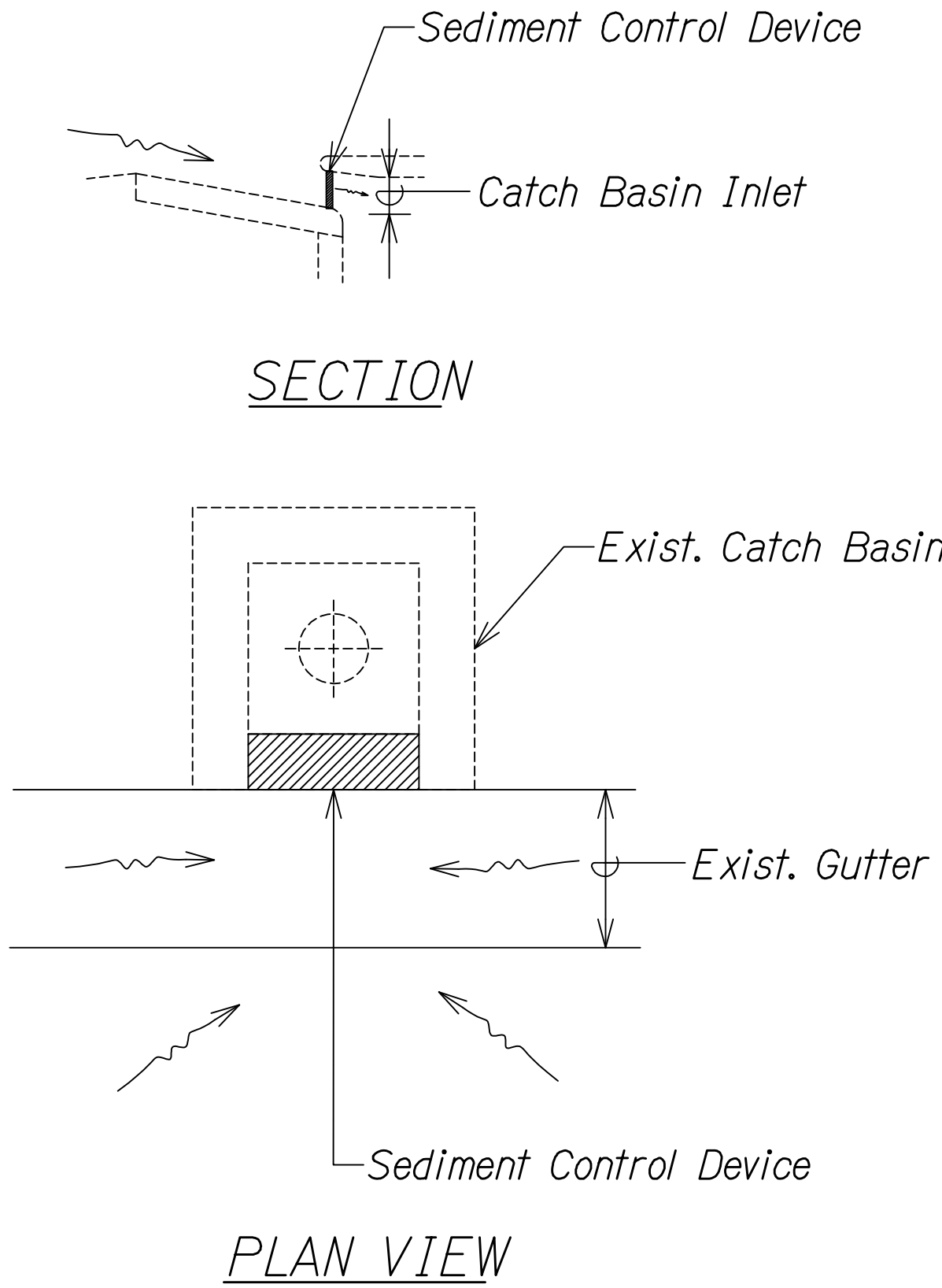


FED. ROAD DIST. NO.	STATE	FED. AID PROJ. NO.	FISCAL YEAR	SHEET NO.	TOTAL SHEETS
HAWAII	HAW.	NH-H201(005) Ph2	2020	21	140

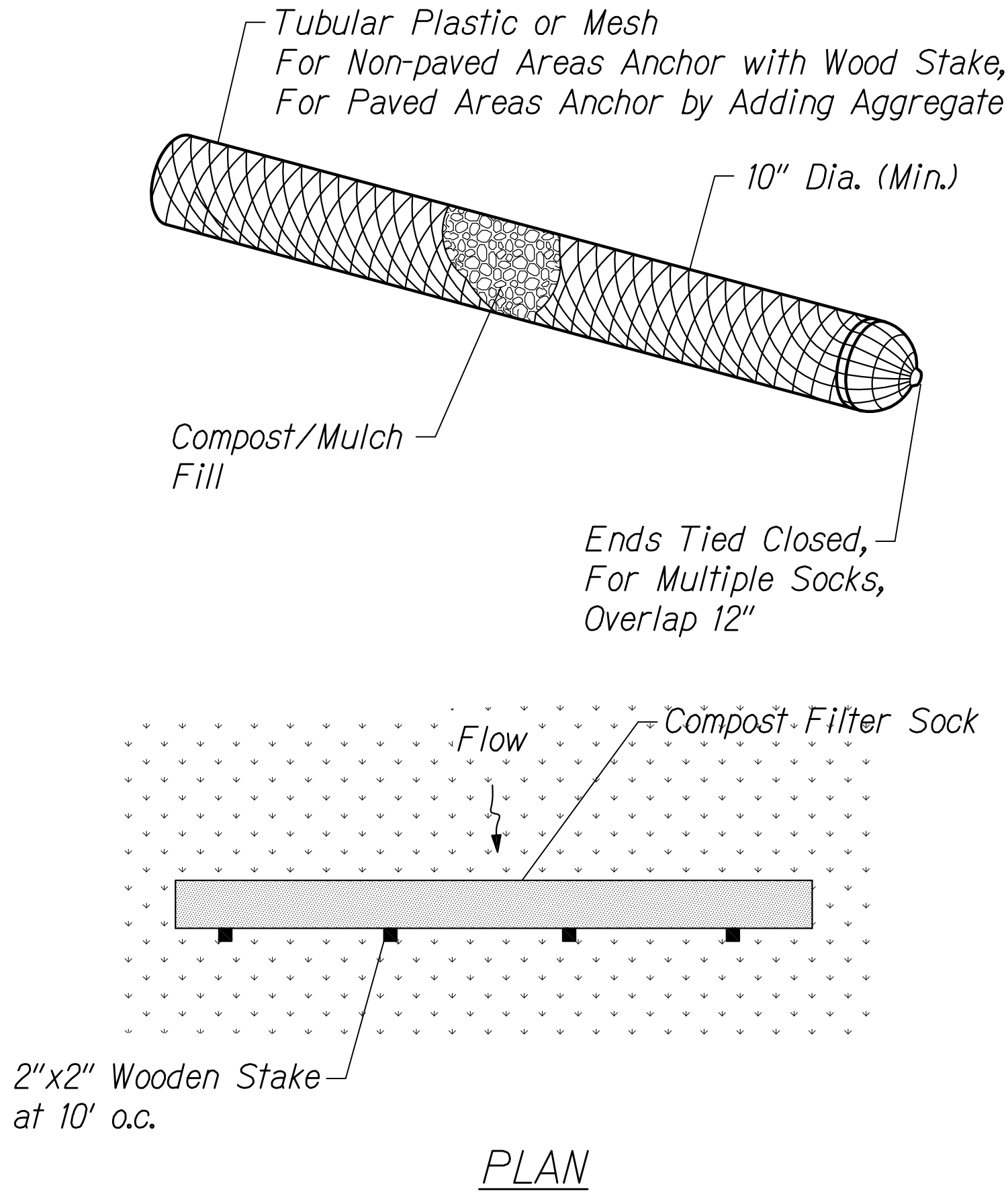


FILTER FABRIC AT GRATED DRAIN INLET
Not to Scale

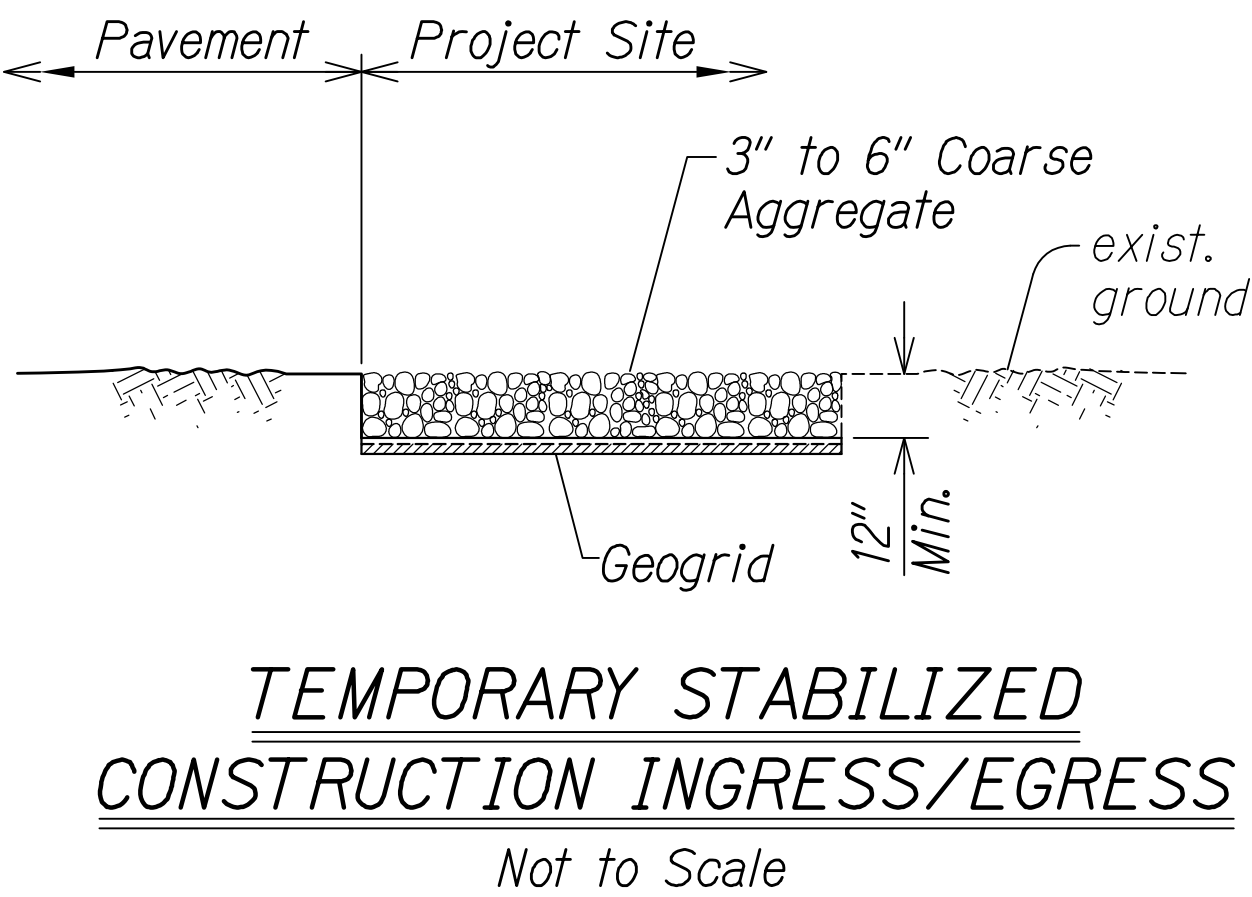


- Note:**
1. Sediment Control Device shall fit snugly within curb opening. Filter Media shall not protrude into roadway.
 2. Filter Media shall be secured in place to ensure it does not wash away into drainage system.
 3. Provide overflow spillway to prevent excessive ponding.

CATCH BASIN INLET PROTECTION
Not to Scale

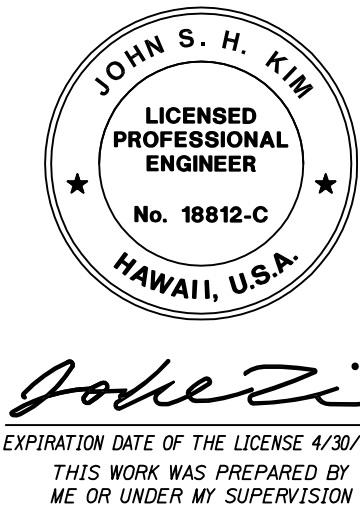


COMPOST FILTER SOCK
Not to Scale



TEMPORARY STABILIZED CONSTRUCTION INGRESS/EGRESS
Not to Scale

ORIGINAL PLAN	SURVEY PLOTTED BY	DATE
NOTE BOOK	DRAWN BY	
No.	DESIGNED BY	
	QUANTITIES BY	
	CHECKED BY	



STATE OF HAWAII
DEPARTMENT OF TRANSPORTATION
HIGHWAYS DIVISION

EROSION CONTROL DETAILS
 MOANALUA FREEWAY, HIGHWAY LIGHTING IMPROVEMENTS
 Halawa Heights Off-ramp to Middle St. Overpass
 FAP NO. NH-H201(005) PHASE 2
 Scale: As Shown
 Date: July 2020

EXPIRATION DATE OF THE LICENSE 4/30/2022
THIS WORK WAS PREPARED BY ME OR UNDER MY SUPERVISION

SHEET No. *ECD-1* OF 1 SHEETS