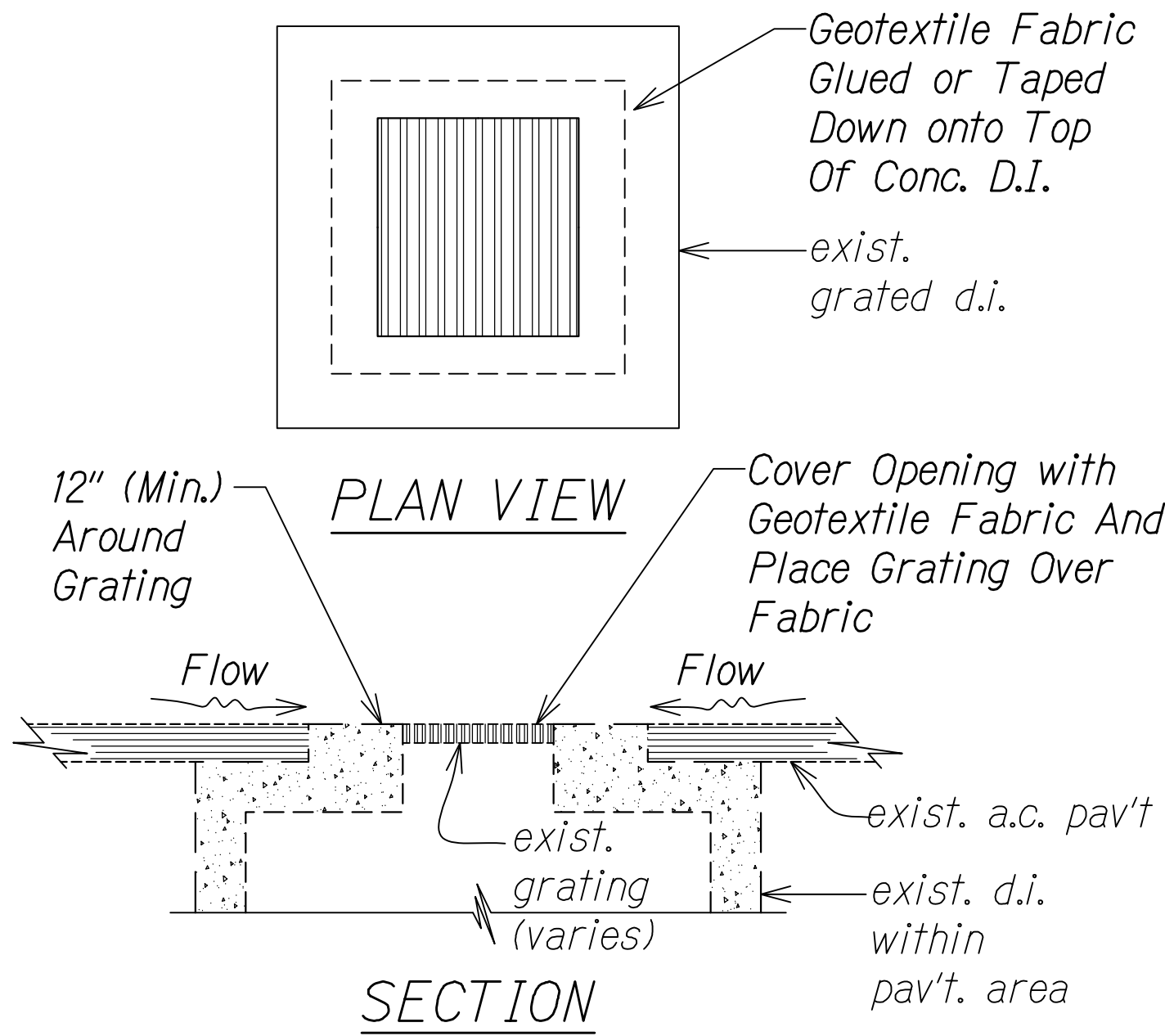
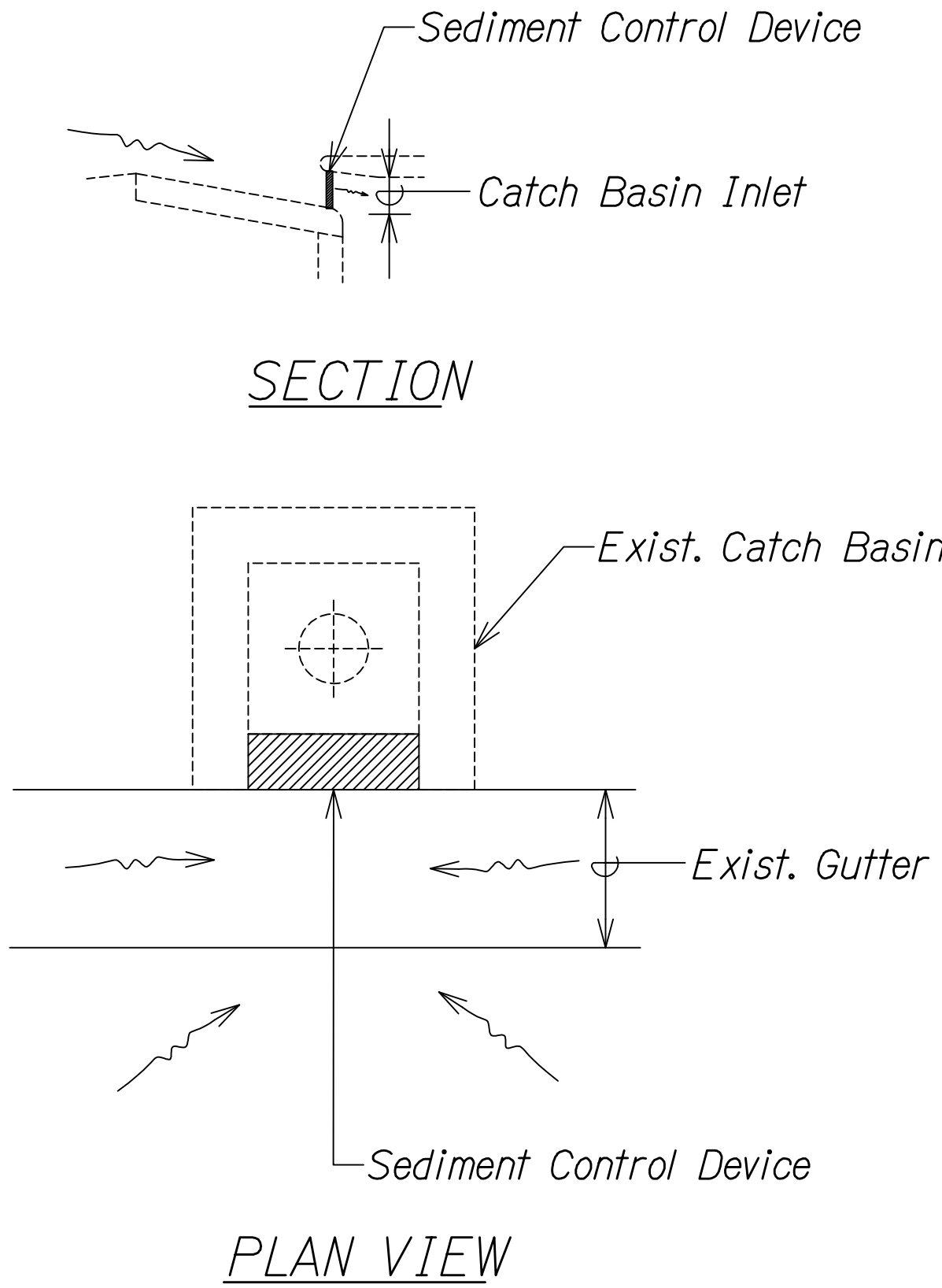


FED. ROAD DIST. NO.	STATE	FED. AID PROJ. NO.	FISCAL YEAR	SHEET NO.	TOTAL SHEETS
HAWAII	HAW.	NH-H201(006)	2020	9	111

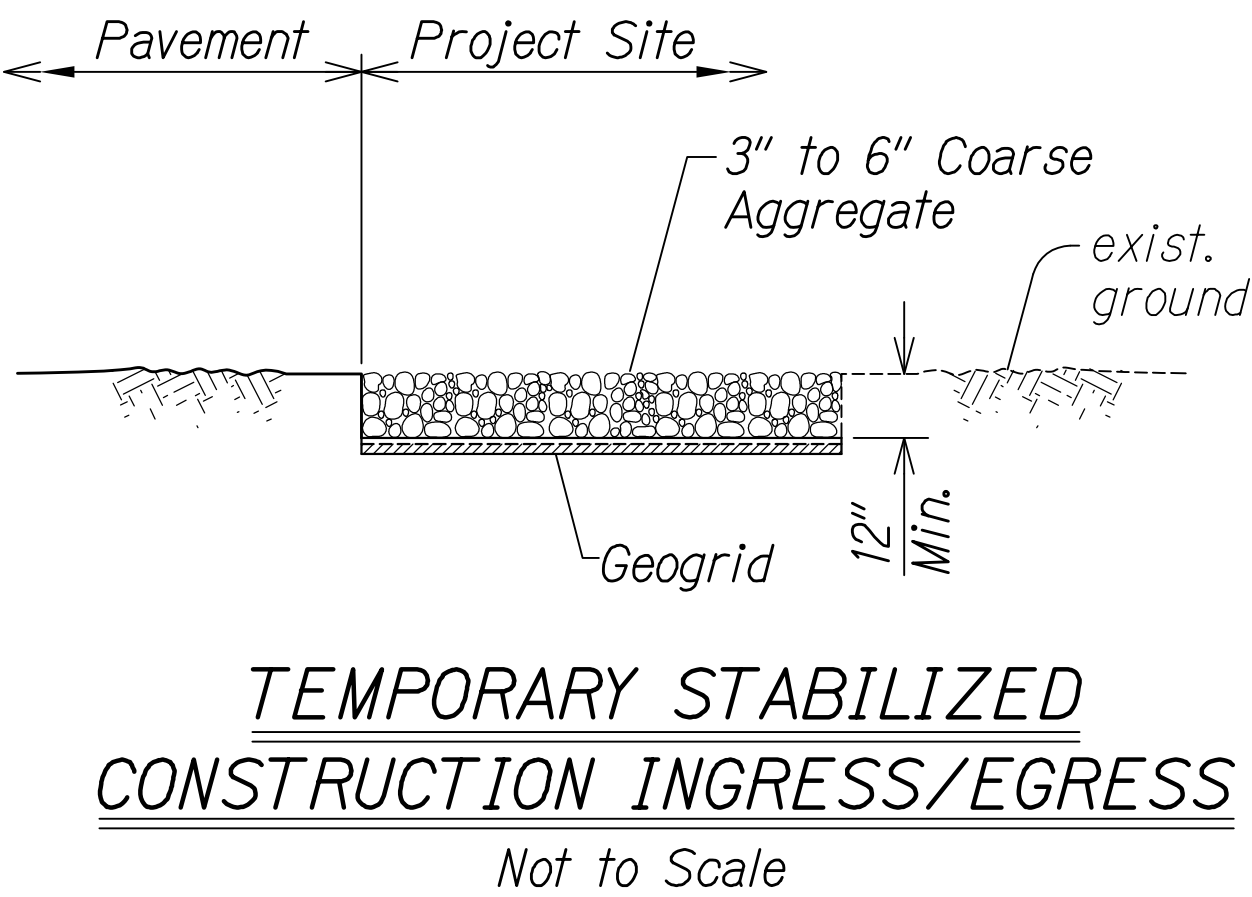


FILTER FABRIC AT GRATED DRAIN INLET
Not to Scale

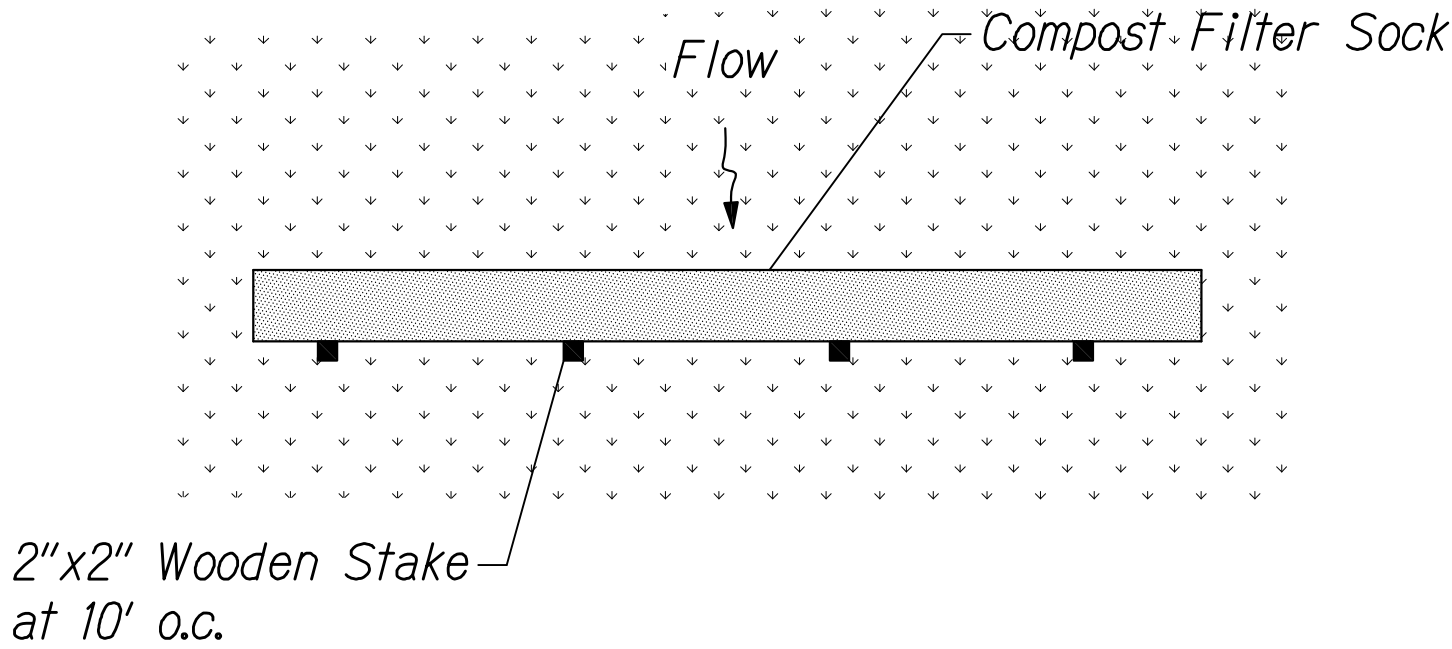
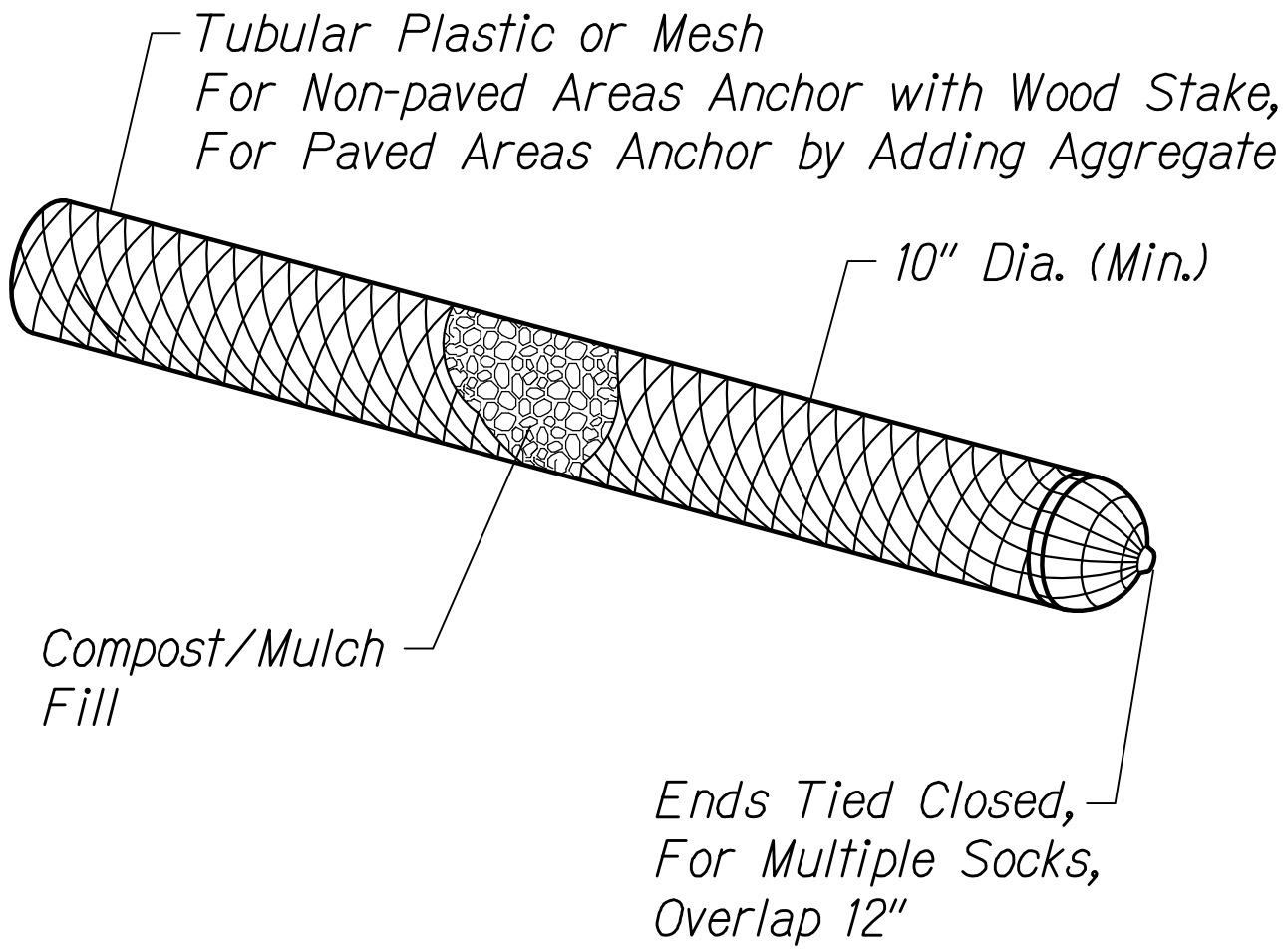


- Note:**
1. Sediment Control Device shall fit snugly within curb opening. Filter Media shall not protrude into roadway.
 2. Filter Media shall be secured in place to ensure it does not wash away into drainage system.
 3. Provide overflow spillway to prevent excessive ponding.

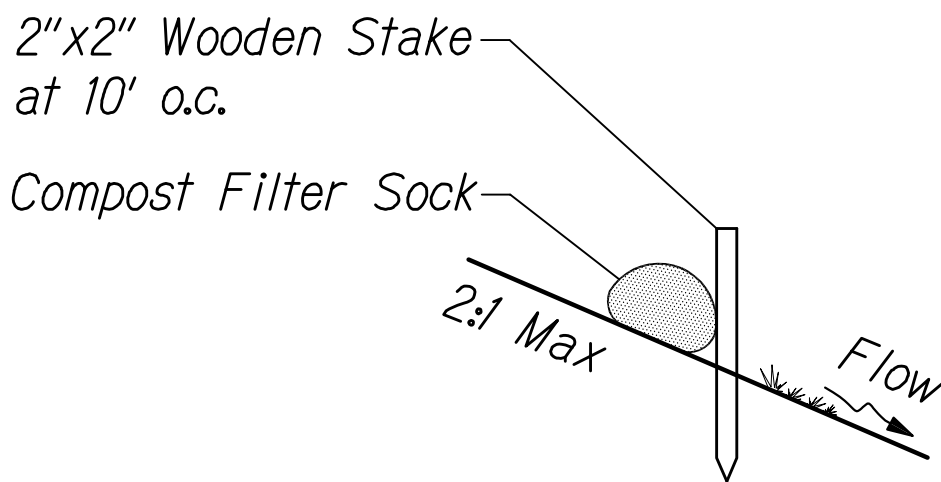
CATCH BASIN INLET PROTECTION
Not to Scale



TEMPORARY STABILIZED CONSTRUCTION INGRESS/EGRESS
Not to Scale



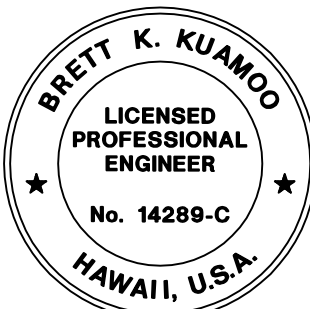
PLAN



SECTION

COMPOST FILTER SOCK
Not to Scale

ORIGINAL PLAN	DATE
SURVEY PLOTTED BY	
DRAWN BY	
DESIGNED BY	
QUANTITIES BY	
CHECKED BY	
NOTE BOOK	
No.	



Brett Kuamoo
 EXPIRATION DATE OF THE LICENSE 4/30/2022
 THIS WORK WAS PREPARED BY
 ME OR UNDER MY SUPERVISION

STATE OF HAWAII
DEPARTMENT OF TRANSPORTATION
HIGHWAYS DIVISION

EROSION CONTROL DETAILS

MOANALUA FREEWAY, HIGHWAY LIGHTING IMPROVEMENTS
Halawa to H-3 Freeway Underpass
FAP NO. NH-H201(006)

Scale: As Shown
Date: July 2020

SHEET No. *ECD-1* OF 1 SHEETS