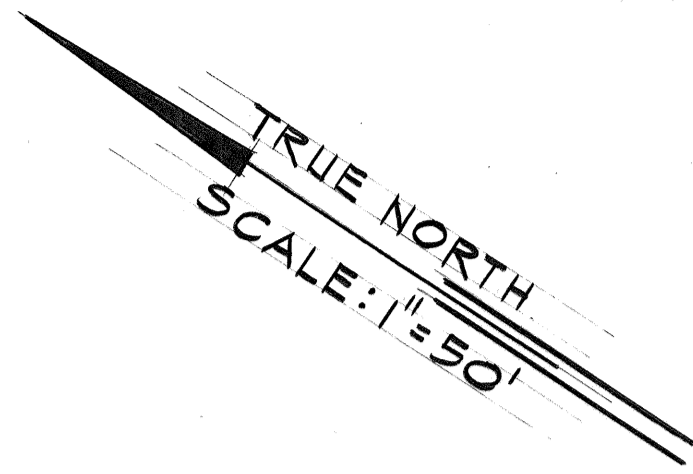
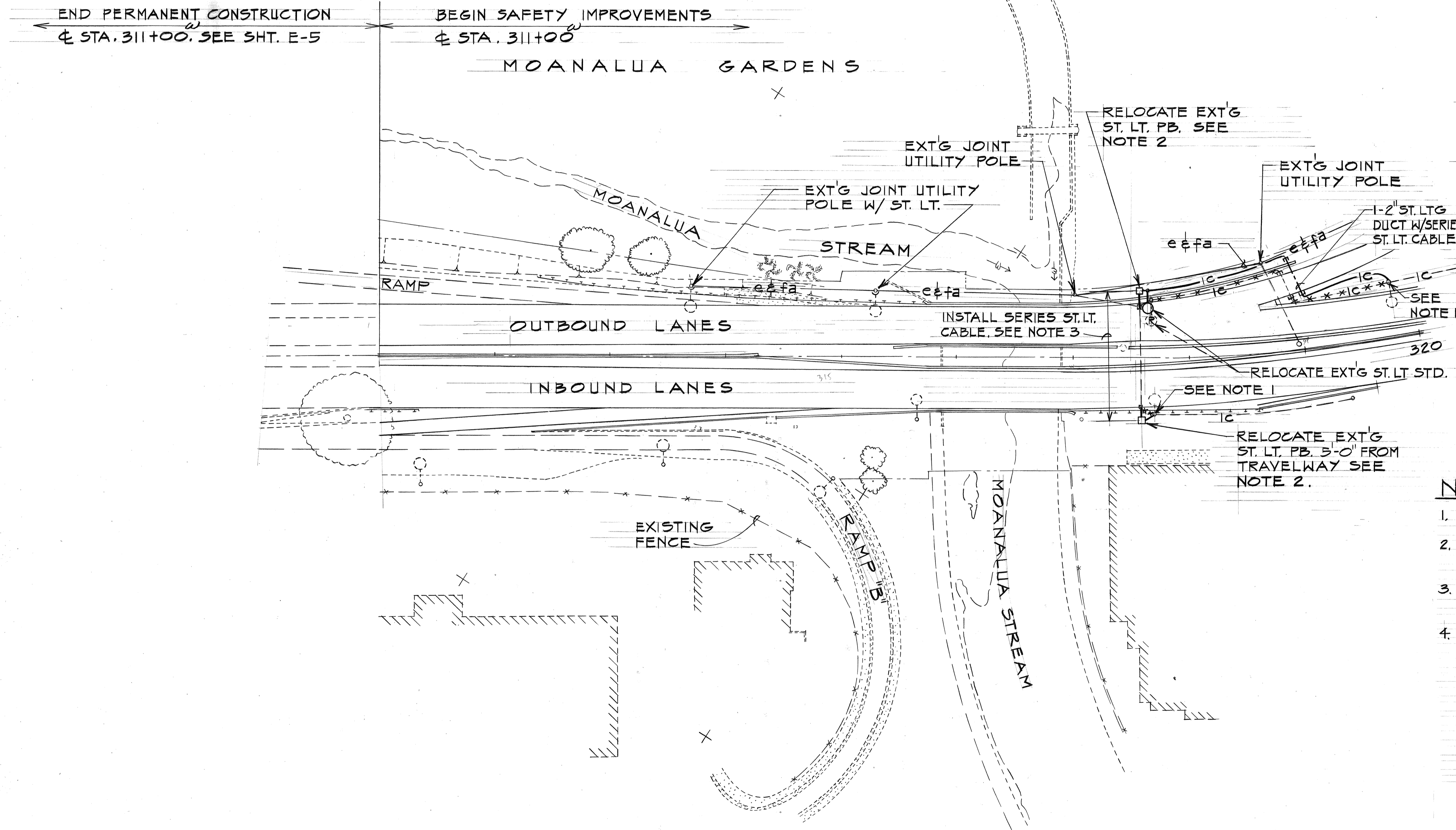


FED. ROAD DIST. NO.	STATE	FED. AID PROJ. NO.	FISCAL YEAR	SHEET NO.	TOTAL SHEETS
HAWAII	HAW.	HHS-078-1(19)	1977	139	147

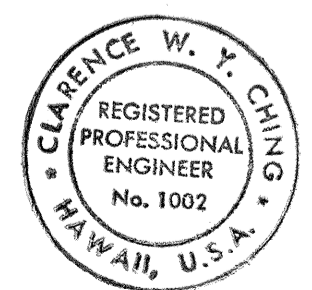


ELECTRICAL LEGEND	
SYMBOL	DESCRIPTION
	EXT'G ST. LT. STD
	EXT'G ST. LT. STD TO BE REMOVED UNLESS NOTED OTHERWISE.
	EXT'G ST. LT. ON JOINT UTILITY POLE
	400 WATT MERCURY VAPOR LUMINAIRE (FOR SERIES ST. LT.) IES DISTRIBUTION: M-S-II
	ST. LT. PULLBOX-19" X 28" PRECAST CONCRETE, D.O.T. STD TYPE "B"
	EXT'G PULLBOX
	EXT'G ELECTRICAL AND FIRE ALARM OVERHEAD POLE LINE.
	UNDERGROUND DUCT SYSTEM
	UNDERGROUND SERIES ST. LT. SYSTEM (#8, 7KV CABLE -IC INDICATES NUMBER OF CONDUCTORS)
	EXT'G UNDERGROUND SYSTEM TO BE REMOVED OR ABANDONED AS REQ'D. SEE NOTE 4
	EXT'G SERIES ST. LT. SYSTEM (IC INDICATES NUMBER OF CONDUCTORS)
	DUCT SECTION INDICATOR. NUMBER IS DETAIL ASSIGNMENT



- NOTES:**
1. SPLICE #8 1/2, 7KV CABLE INTO EXT'G SERIES ST. LT. CKT.
 2. RELOCATE EXT'G ST. LT. PB AND EXTEND EXT'G 2" DUCT TO RELOCATED PB AS SHOWN ON PLAN.
 3. REMOVE EXT'G SERIES ST. LT. CABLE AND INSTALL #8, 1C, 7KV CABLE IN EXT'G 2" ST. LT. DUCT.
 4. REMOVE OR ABANDON ASSOCIATED EXT'G ST. LT. DUCTS, CABLES, PB'S AND OTHER ST. LT. EQUIPMENT AS REQ'D UNLESS SHOWN OR NOTED OTHERWISE.

SURVEY PLOTTED BY _____ DATE _____
 DRAWN BY _____
 CHECKED BY _____
 NOTE BOOK NO. _____



THIS WORK WAS PREPARED BY ME
 OR UNDER MY SUPERVISION.

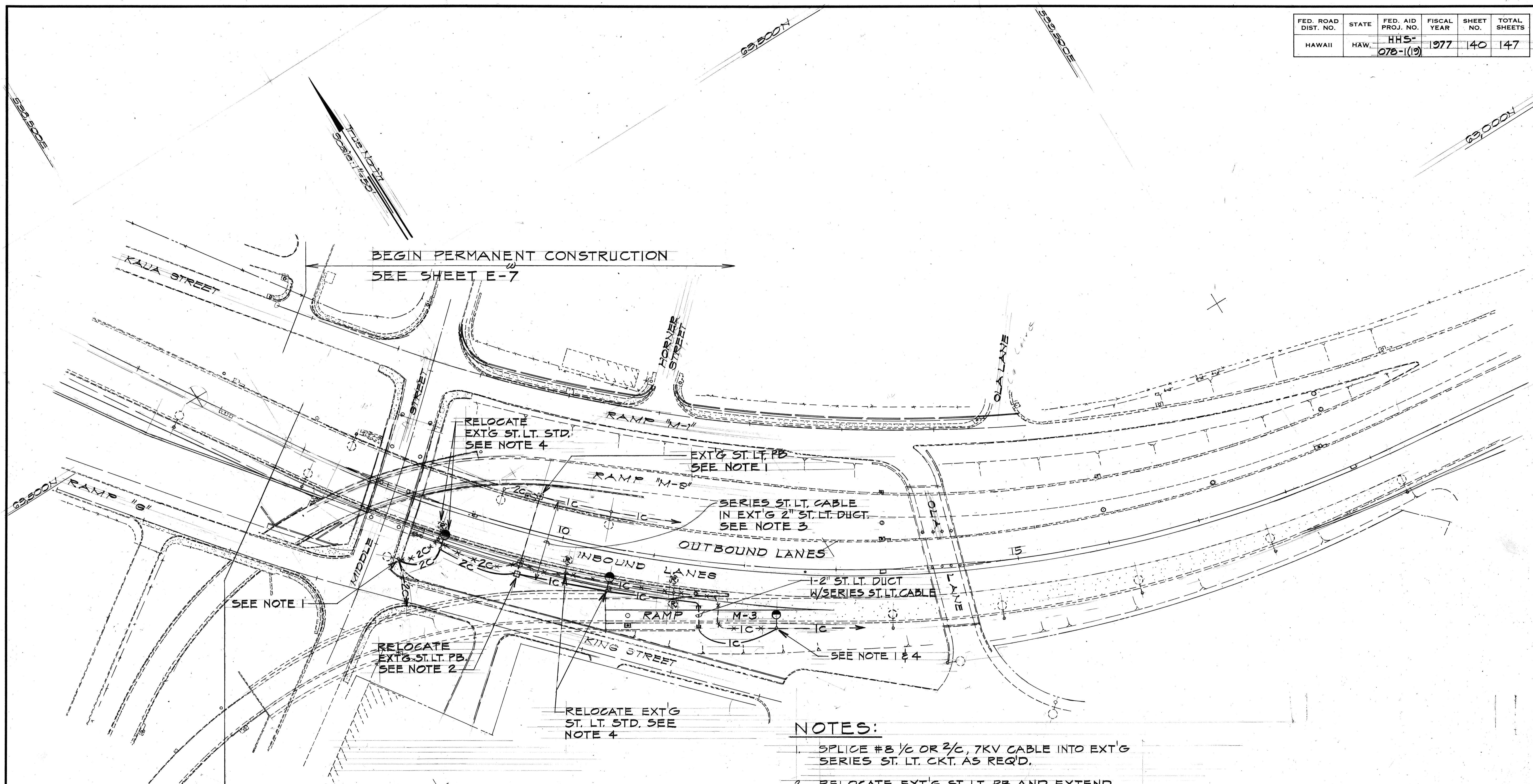
STATE OF HAWAII
 DEPARTMENT OF TRANSPORTATION
 HIGHWAYS DIVISION

STREET LIGHTING PLAN

MOANALUA ROAD
 PUULOA I.C. TO MIDDLE ST.-UNIT IA
 P.A. Proj. No. HHS-078-1(19)

SCALE: AS SHOWN DATE: DEC. 17, 1976
 SHEET NO. 1 OF 3 SHEETS

FED. ROAD DIST. NO.	STATE	FED. AID PROJ. NO.	FISCAL YEAR	SHEET NO.	TOTAL SHEETS
HAWAII	HAW.	HHS-078-1(19)	1977	140	147



DATE	_____
DESIGNED BY	_____
CHECKED BY	_____
NO.	_____

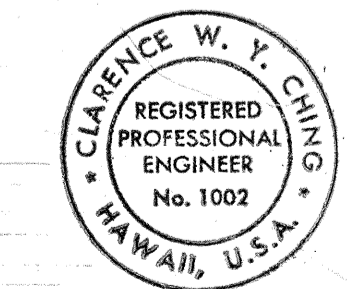
END PERMANENT CONSTRUCTION
 FWY & P.C. STA. 358+82.14
 SEE SHEET E-6

BEGIN SAFETY IMPROVEMENTS
 FWY & P.C. STA. 6+80.75

PLAN
 Scale: 1"=50'

NOTES:

1. SPLICE #8 1/2 OR 3/4, 7KV CABLE INTO EXT'G SERIES ST. LT. CKT. AS REQ'D.
2. RELOCATE EXT'G ST. LT. PB AND EXTEND EXT'G 2" ST. LT. DUCT. TO RELOCATED PB AS SHOWN ON PLAN.
3. REMOVE EXT'G SERIES ST. LT. CABLE AND INSTALL #8 1/2, 7KV CABLE IN EXT'G 2" ST. LT. DUCT.
4. REMOVE EXT'G SERIES ST. LT. LUMINAIRE AND REPLACE W/400 WATT MERCURY VAPOR LUMINAIRE.



THIS WORK WAS PREPARED BY ME OR UNDER MY SUPERVISION.

STATE OF HAWAII
 DEPARTMENT OF TRANSPORTATION
 HIGHWAYS DIVISION

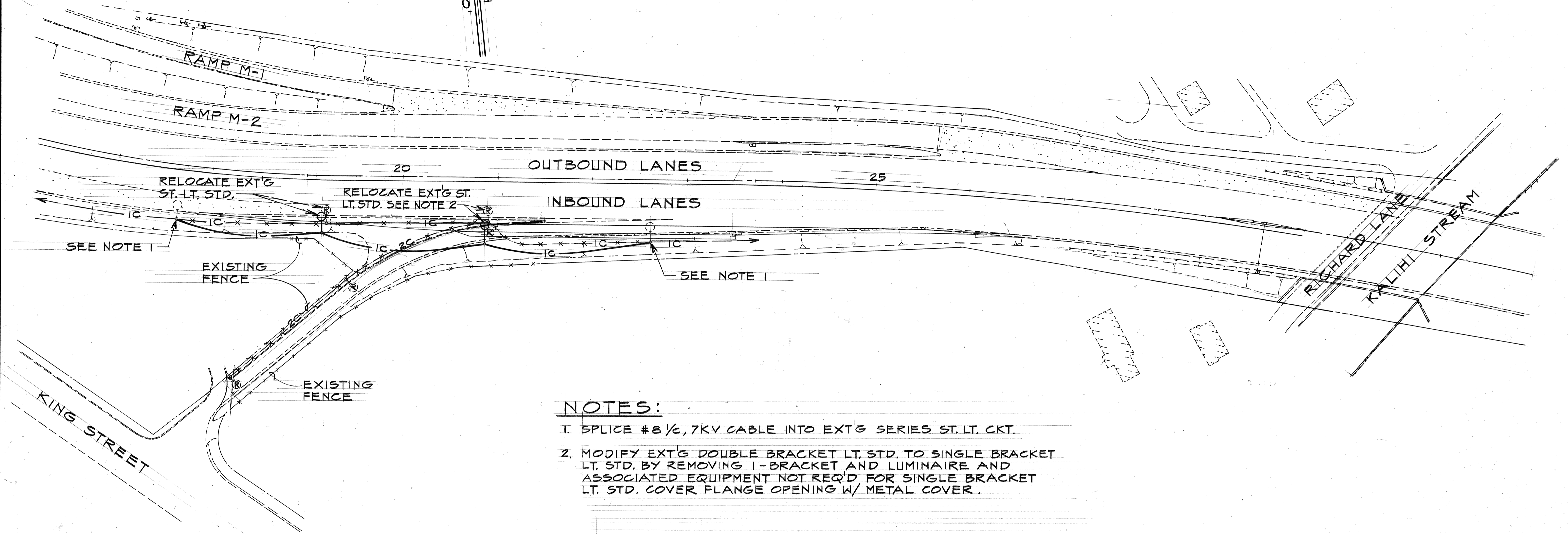
STREET LIGHTING PLAN

MOANALUA ROAD
 PUULOA I.C. TO MIDDLE ST.-UNIT 1A
 F.A. Proj. No. HHS-078-1(19)

SCALE: AS SHOWN DATE: DEC. 17, 1976
 SHEET NO. 2 OF 3 SHEETS

FED. ROAD DIST. NO.	STATE	FED. AID PROJ. NO.	FISCAL YEAR	SHEET NO.	TOTAL SHEETS
HAWAII	HAW.	HHS-078-1(19)	1977	141	147

TRUE NORTH
SCALE: 1" = 50'



NOTES:

1. SPLICE #8 1/2, 7KV. CABLE INTO EXT'G SERIES ST. LT. CKT.
2. MODIFY EXT'G DOUBLE BRACKET LT. STD. TO SINGLE BRACKET LT. STD. BY REMOVING I-BRACKET AND LUMINAIRE AND ASSOCIATED EQUIPMENT NOT REQ'D FOR SINGLE BRACKET LT. STD. COVER FLANGE OPENING W/ METAL COVER.

SURVEY PLOTTED BY	DATE
TRACED BY	
DESIGNED BY	
QUANTITIES BY	
CHECKED BY	
ORIGINAL PLAN	
NOTE BOOK	
No.	



STATE OF HAWAII
DEPARTMENT OF TRANSPORTATION
HIGHWAYS DIVISION

STREET LIGHTING PLAN

MOANALUA ROAD
PUULOA I.C. TO MIDDLE ST. - UNIT 1A
F.A. Proj. No. HHS-078-1(19)

SCALE: AS SHOWN DATE: DEC. 17, 1976
SHEET No. 3 OF 3 SHEETS

C. W. Y. Ching
THIS WORK WAS PREPARED BY ME
OR UNDER MY SUPERVISION.