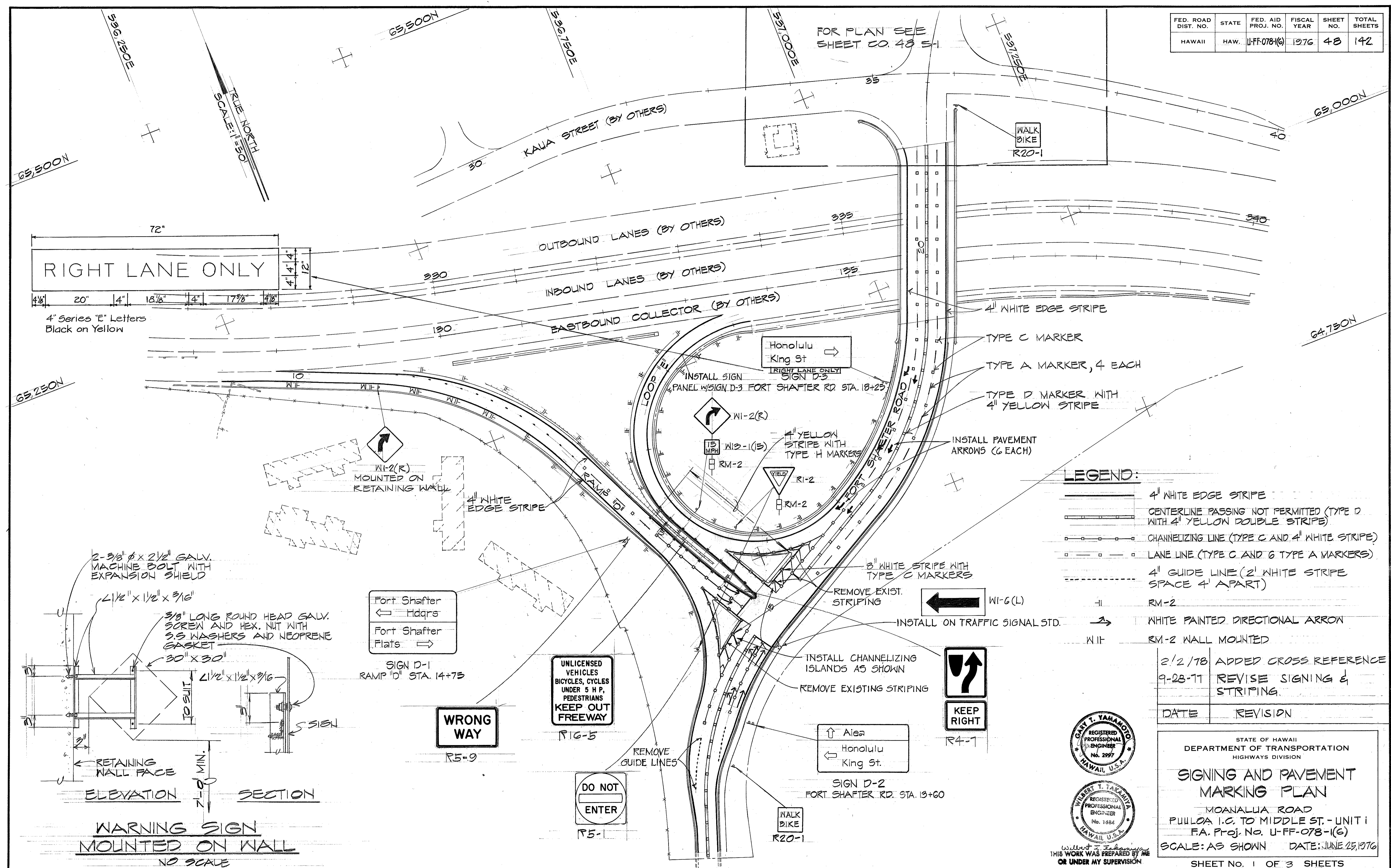


| FED. ROAD DIST. NO. | STATE | FED. AID PROJ. NO. | FISCAL YEAR | SHEET NO. | TOTAL SHEETS |
|---------------------|-------|--------------------|-------------|-----------|--------------|
| HAWAII | HAW. | U-FF-078-1(6) | 1976 | 48 | 142 |

FOR PLAN SEE SHEET CO. 48 5-1



LEGEND:

| | |
|--|--|
| | 4" WHITE EDGE STRIPE |
| | CENTERLINE PASSING NOT PERMITTED (TYPE D WITH 4" YELLOW DOUBLE STRIPE) |
| | CHANNELIZING LINE (TYPE C AND 4" WHITE STRIPE) |
| | LANE LINE (TYPE C AND 6 TYPE A MARKERS) |
| | 4" GUIDE LINE (2" WHITE STRIPE SPACE 4" APART) |
| | RM-2 |
| | WHITE PAINTED DIRECTIONAL ARROW |
| | RM-2 WALL MOUNTED |

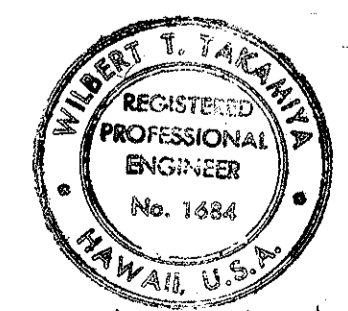
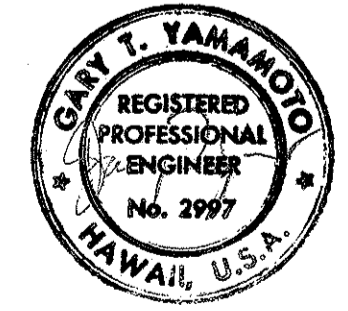
| DATE | REVISION |
|---------|----------------------------|
| 2/2/78 | ADDED CROSS REFERENCE |
| 9-28-77 | REVISE SIGNING & STRIPING. |

| DATE | REVISION |
|------|----------|
| | |

STATE OF HAWAII
DEPARTMENT OF TRANSPORTATION
HIGHWAYS DIVISION

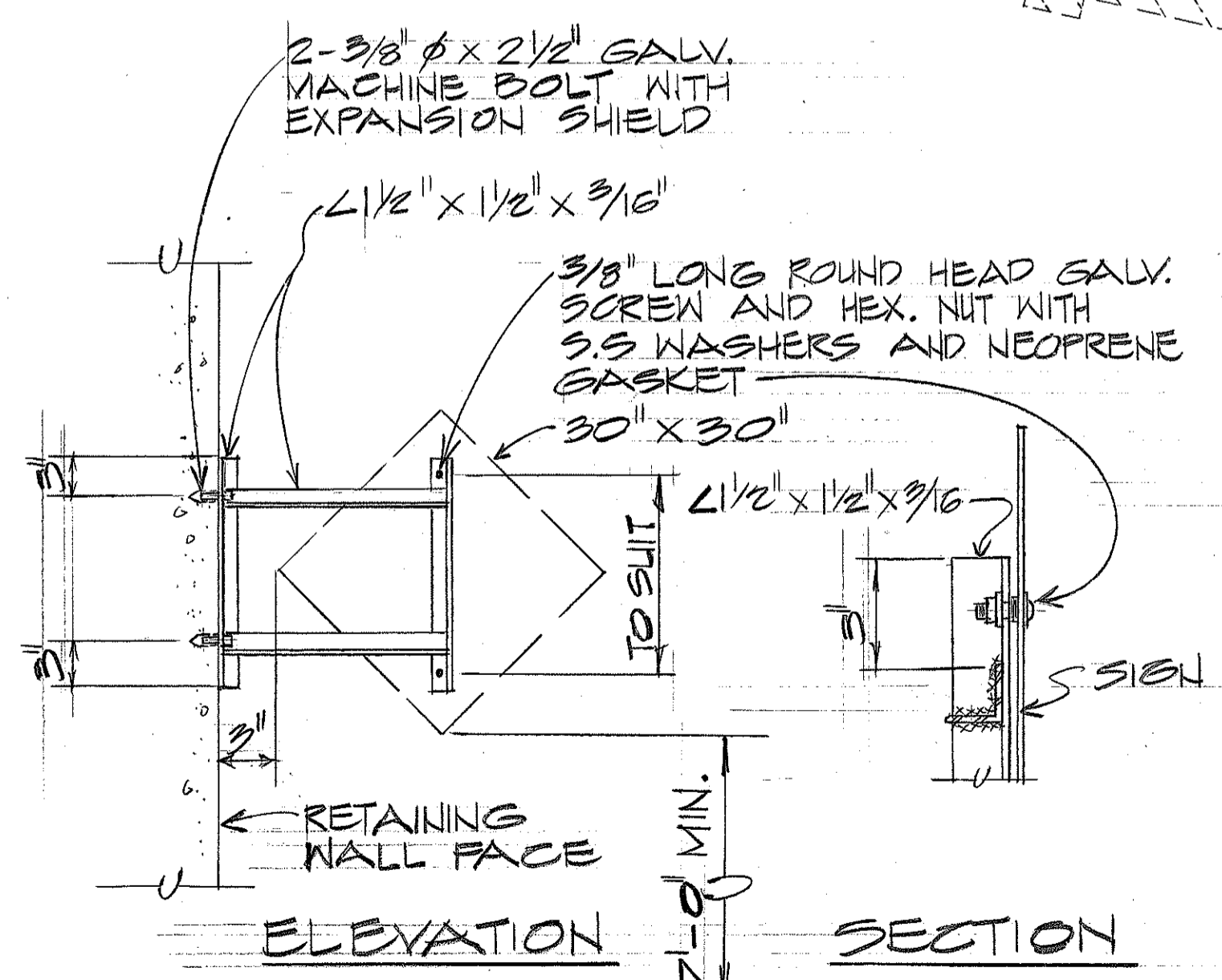
SIGNING AND PAVEMENT MARKING PLAN

MOANALUA ROAD
PULLOA I.C. TO MIDDLE ST. - UNIT I
F.A. Proj. No. U-FF-078-1(6)
SCALE: AS SHOWN DATE: JUNE 29, 1976



WILBERT T. TAKAHASHI
THIS WORK WAS PREPARED BY ME OR UNDER MY SUPERVISION

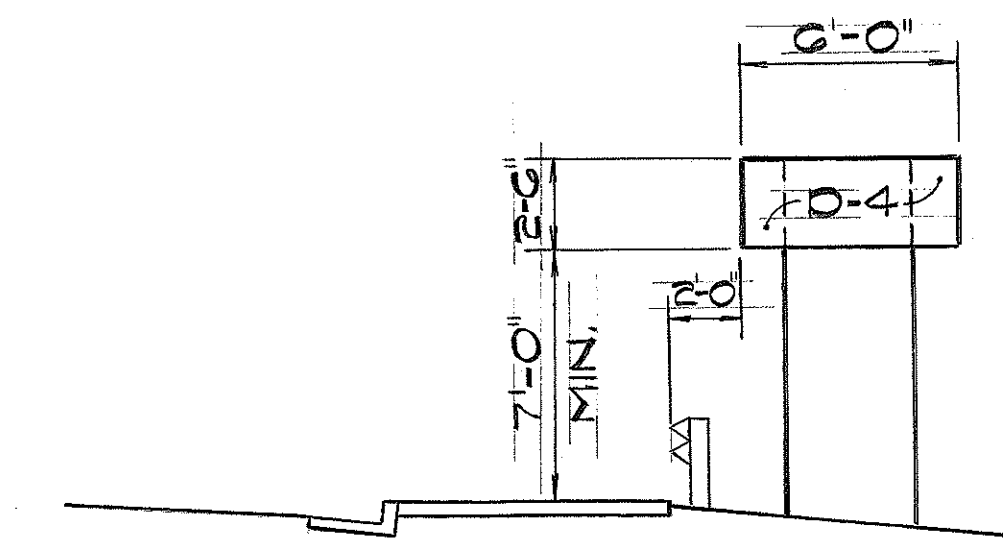
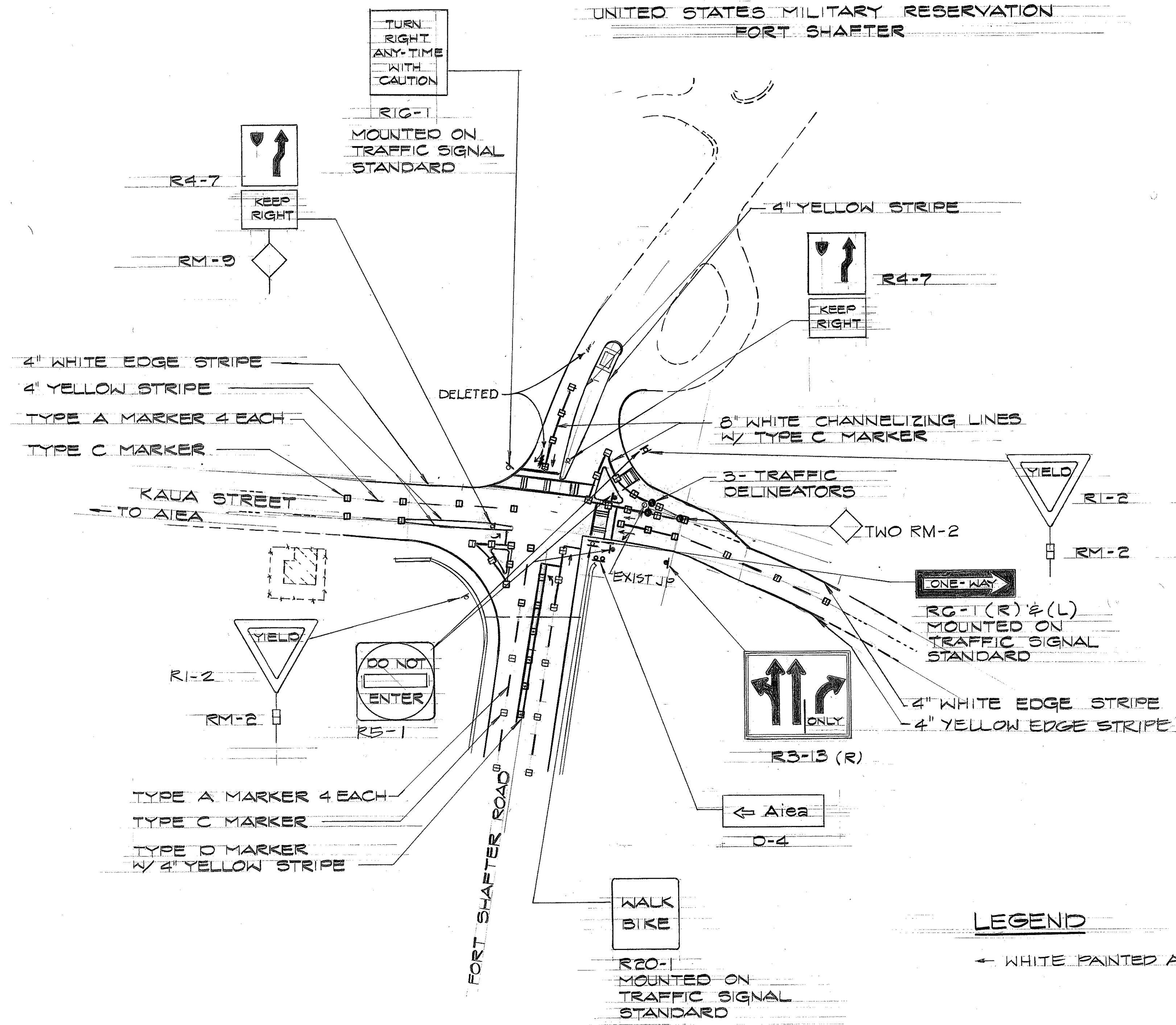
| | |
|-------------------|--|
| DATE | |
| SURVEY PLOTTED BY | |
| ORIGINAL PLAN | |
| DRAWN BY | |
| DESIGNED BY | |
| NOTE BOOK | |
| QUANTITIES BY | |
| CHECKED BY | |
| NO. | |



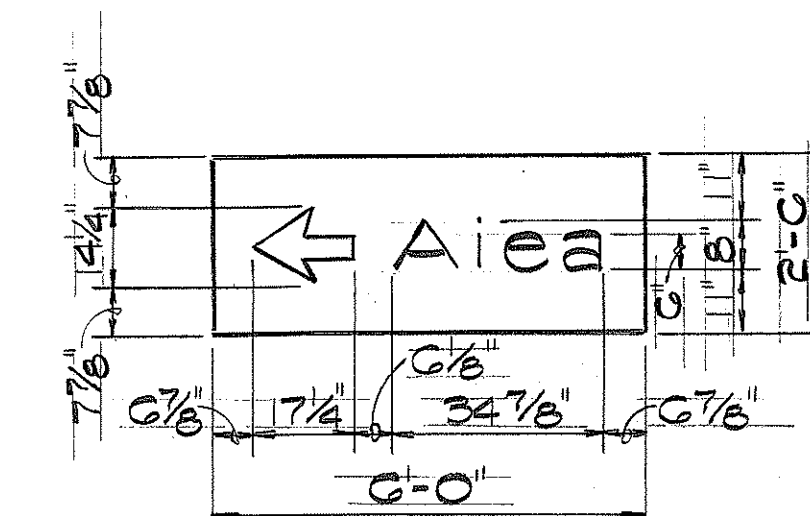
WARNING SIGN MOUNTED ON WALL
NO SCALE

| FED. ROAD DIST. NO. | STATE | FED. AID PROJ. NO. | FISCAL YEAR | SHEET NO. | TOTAL SHEETS |
|---------------------|-------|--------------------|-------------|-----------|--------------|
| HAWAII | HAW. | U-FF-078 (6) | 1976 | 048 S1 | 142 |

UNITED STATES MILITARY RESERVATION
FORT SHAFTER



SIGN D-4
FORT SHAFTER ROAD STA. 21+70



SIGN D-4

NOTE:
FOR GENERAL NOTES AND TYPICAL ARROW
DETAIL, SEE SHEET 31R

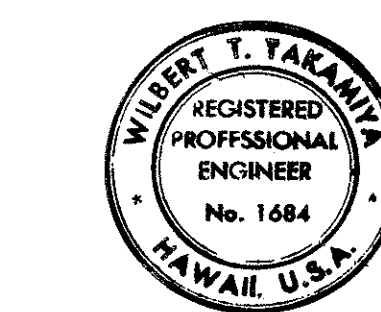
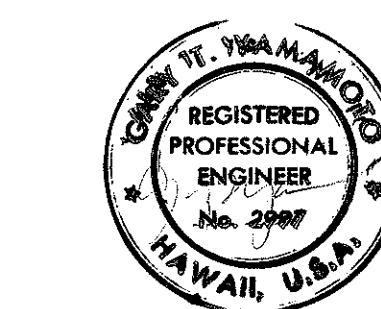
LEGEND

← WHITE PAINTED ARROW

PLAN
SCALE: 1" = 50'

| | |
|-------------------|------|
| SURVEY PLOTTED BY | DATE |
| DRAWN BY | |
| DESIGNED BY | |
| QUANTITIES BY | |
| CHECKED BY | |
| ORIGINAL PLAN | No. |
| NOTE BOOK | No. |

| | |
|--------|-------------|
| 2/2/78 | ADDED SIGNS |
| DATE | REVISION |



Without T. Takamika
THIS WORK WAS PREPARED BY ME
OR UNDER MY SUPERVISION.

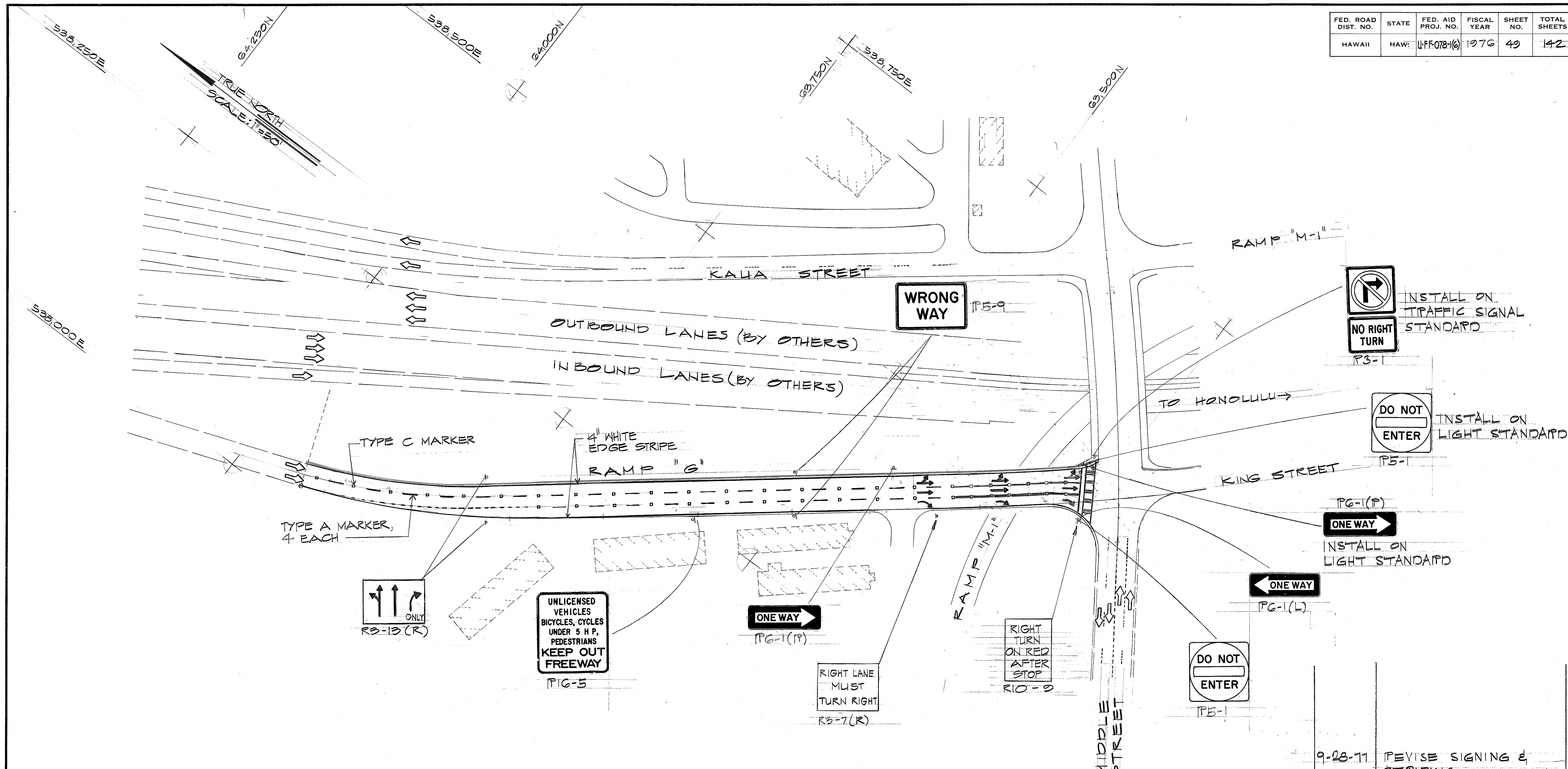
STATE OF HAWAII
DEPARTMENT OF TRANSPORTATION
LAND TRANSPORTATION FACILITIES DIVISION

**SIGNING AND PAVEMENT
MARKING PLAN**

MOANALUA ROAD
PUULOA I.C. TO MIDDLE ST. - UNIT 1
F.A. PROJ. NO. U-FF-078-1(G)

SCALE: AS SHOWN DATE: 2/2/78
SHEET NO. OF SHEETS

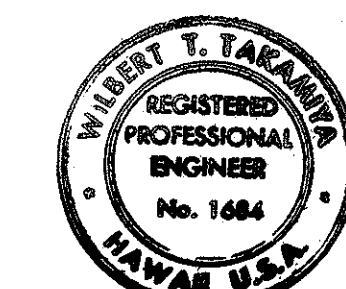
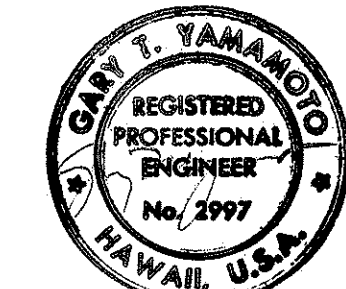
| FED. ROAD DIST. NO. | STATE | FED. AID PROJ. NO. | FISCAL YEAR | SHEET NO. | TOTAL SHEETS |
|---------------------|-------|--------------------|-------------|-----------|--------------|
| HAWAII | HAW. | U-FF-078-1(6) | 1976 | 49 | 142 |



PLAN
SCALE: 1"=50'

| | |
|---------|---------------------------|
| 9-28-77 | REVISE SIGNING & STRIPING |
| DATE | REVISION |

ORIGINAL PLAN
NO. _____
DATE _____
SURVEY PLOTTED BY _____
DRAWN BY _____
DESIGNED BY _____
CHECKED BY _____



THIS WORK WAS PREPARED BY ME OR UNDER MY SUPERVISION.

STATE OF HAWAII
DEPARTMENT OF TRANSPORTATION
HIGHWAYS DIVISION

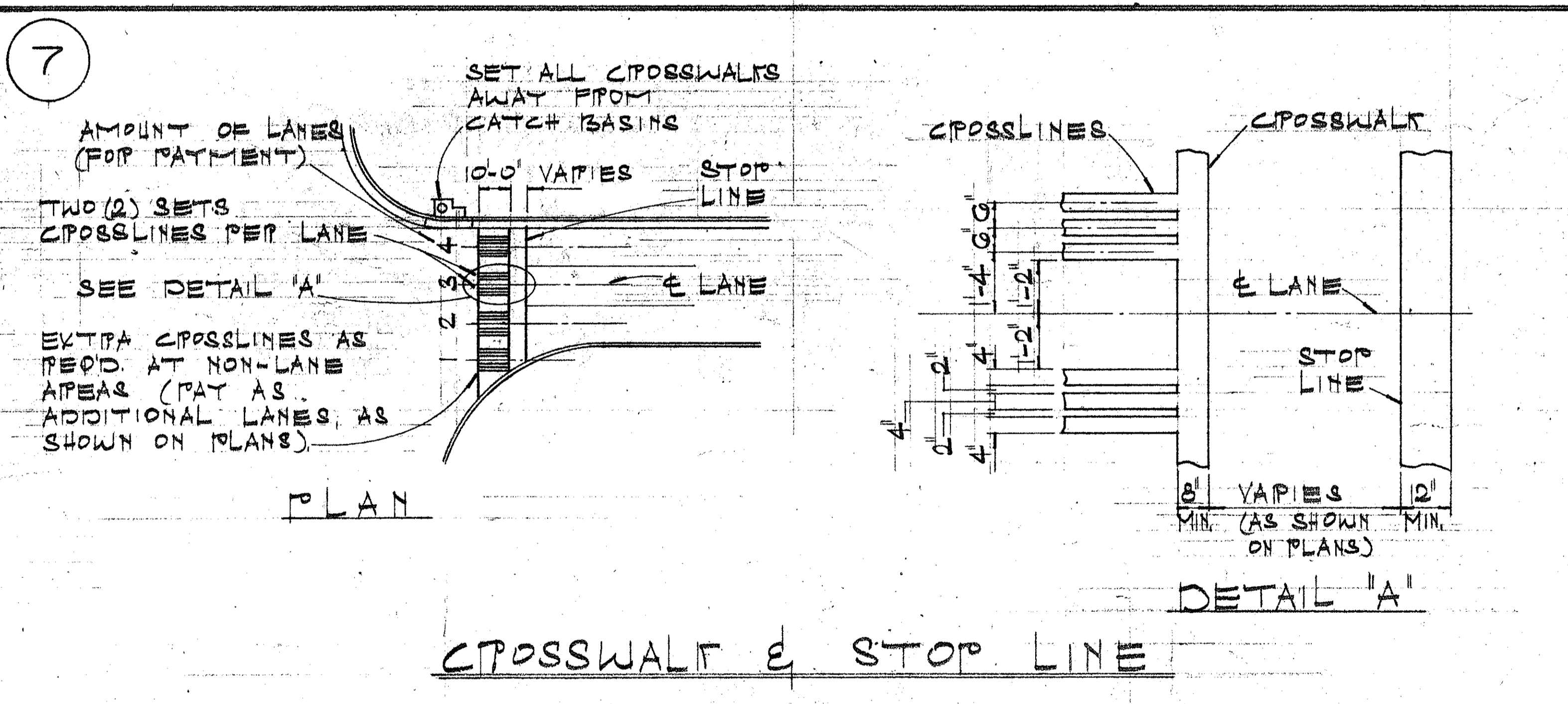
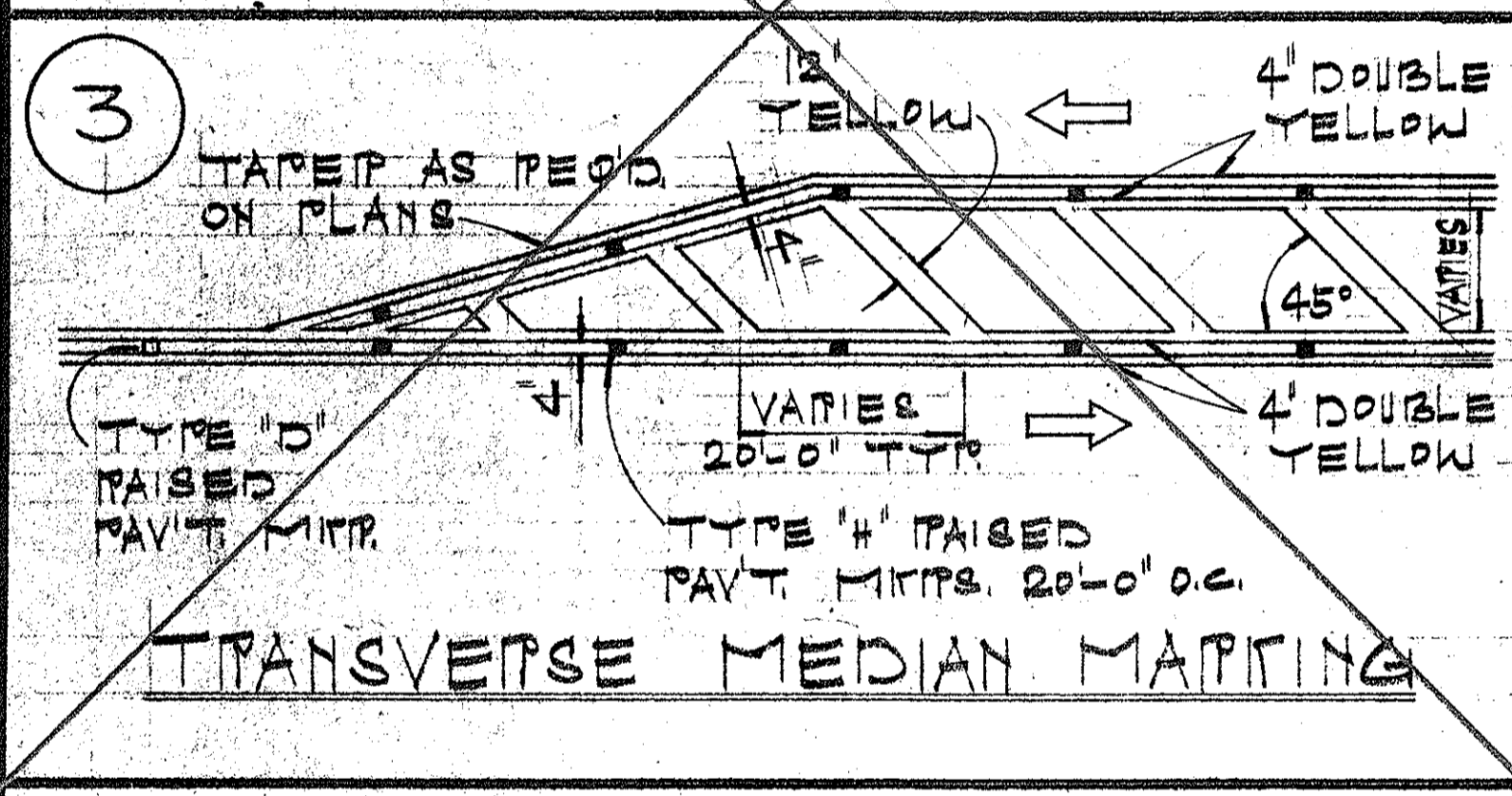
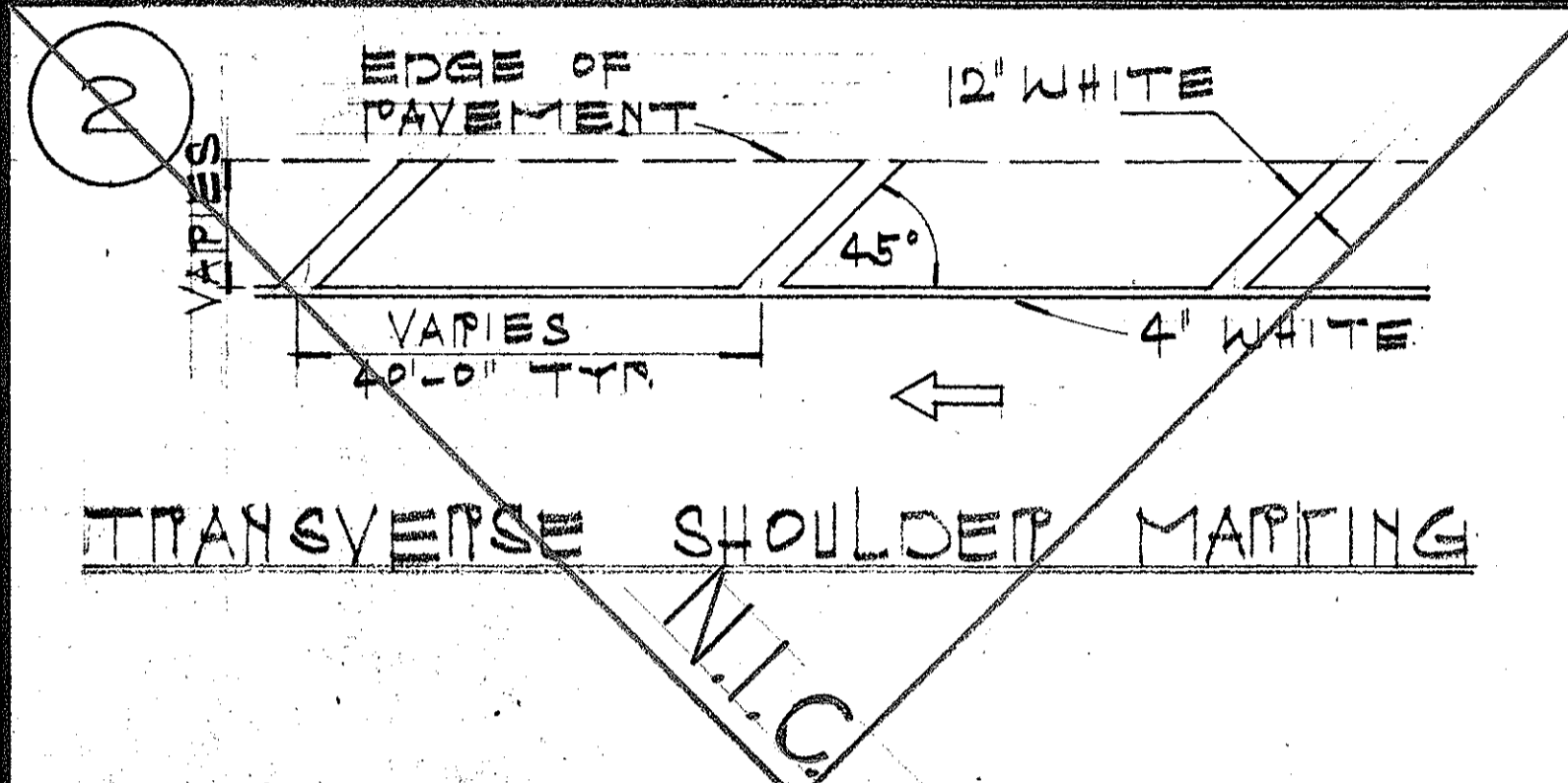
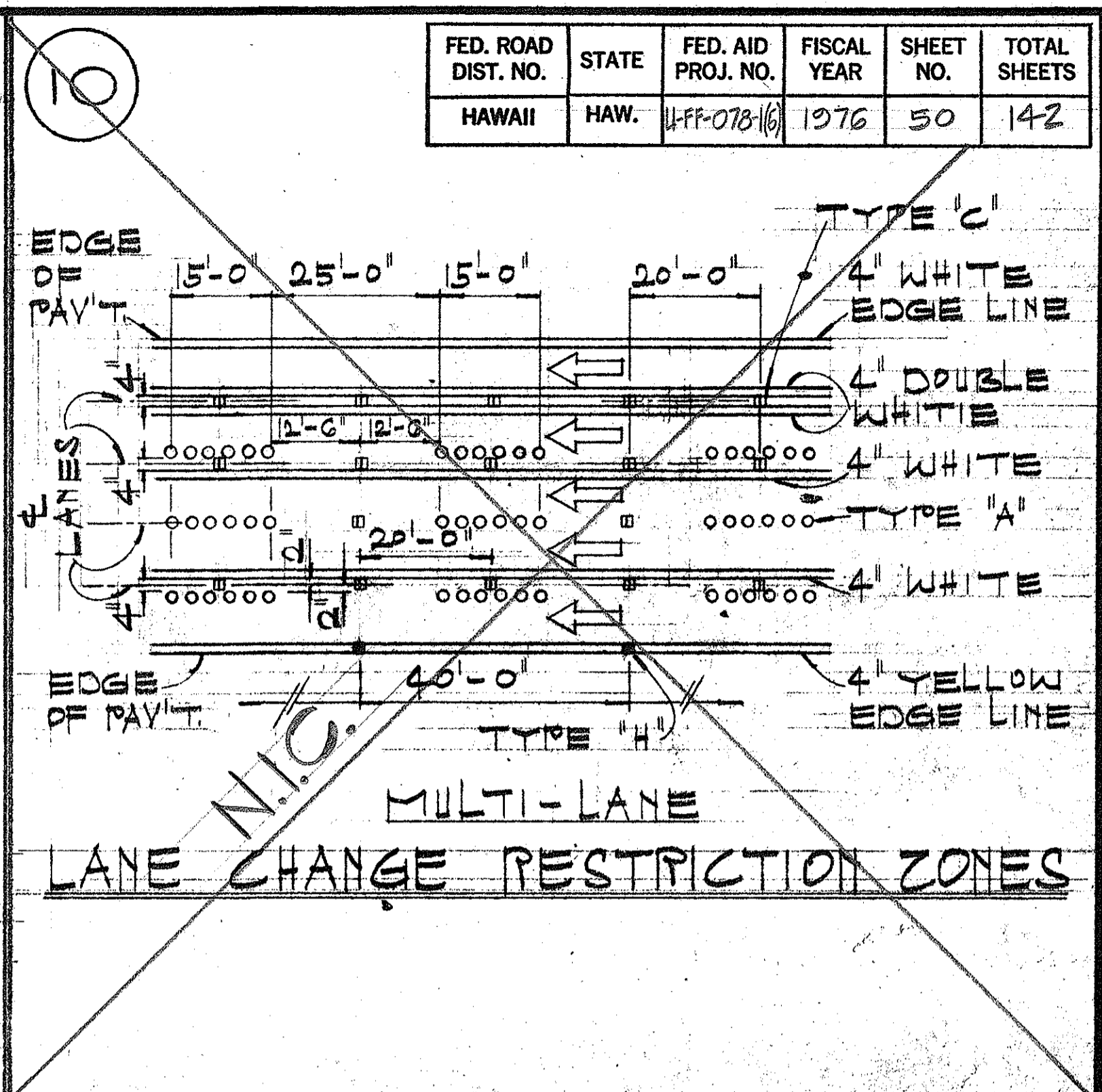
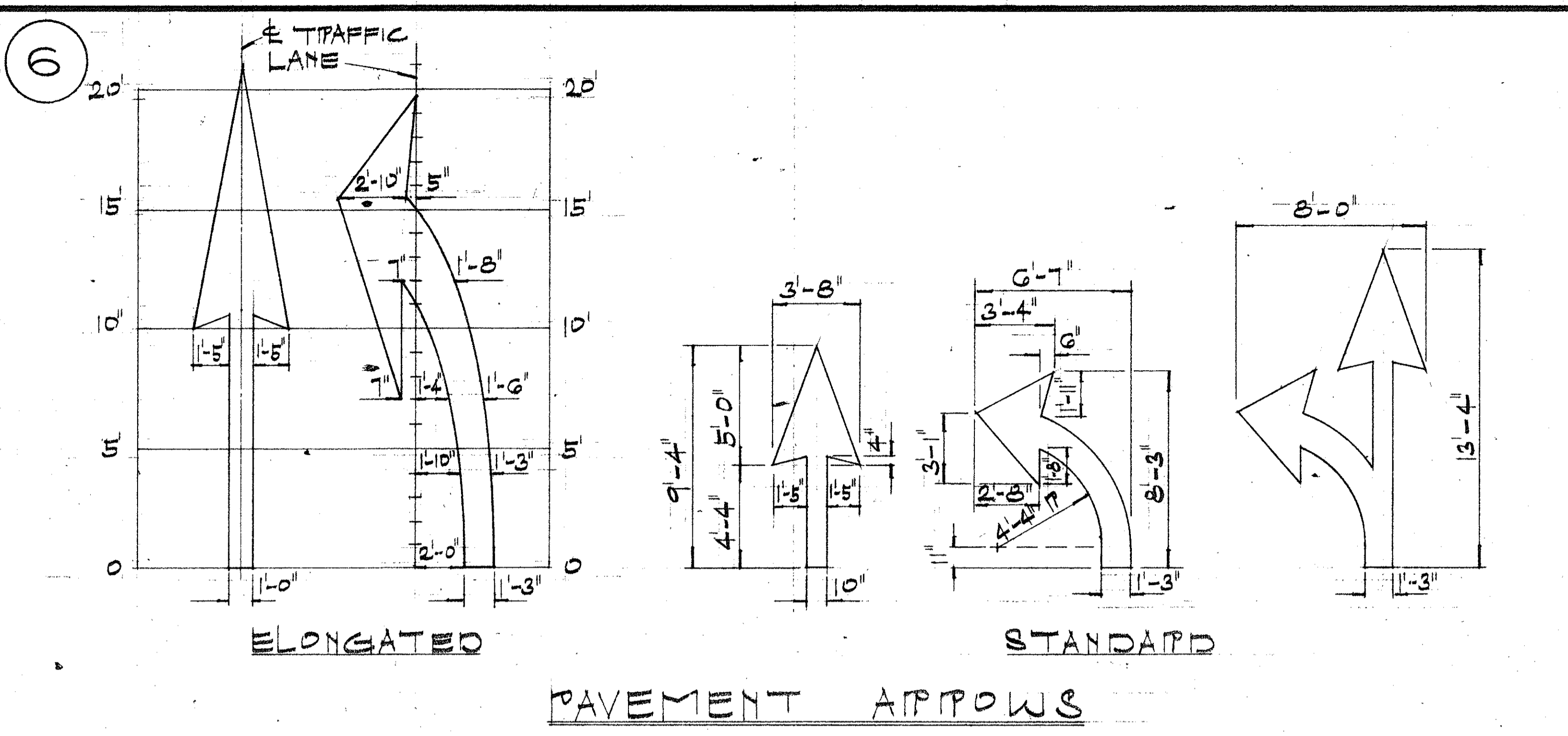
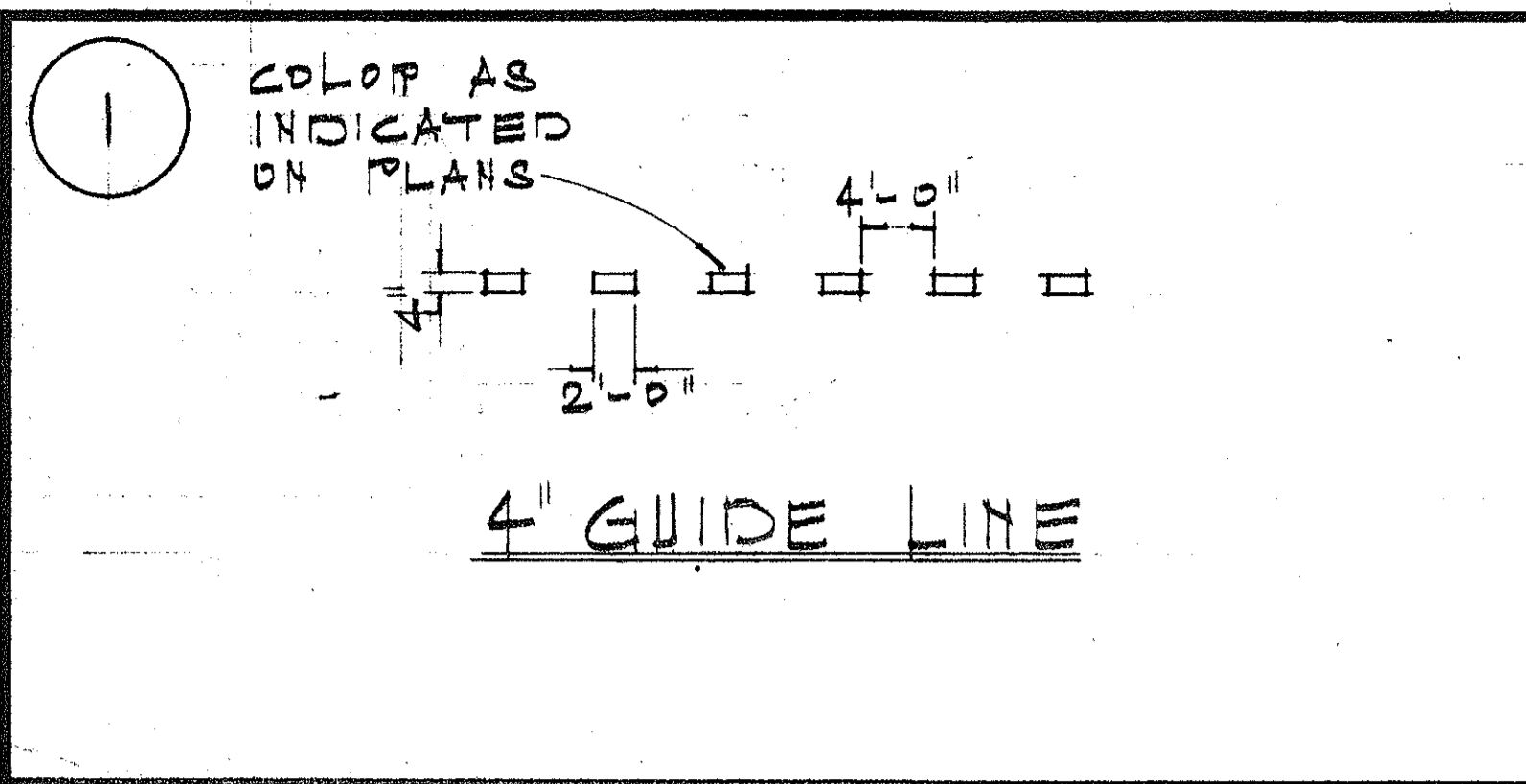
SIGNING AND PAVEMENT MARKING PLAN

MOANALUA ROAD
PUULOA I.C. TO MIDDLE ST. - UNIT 1
FA. Proj. No. U-FF-078-1(6)

SCALE: AS SHOWN DATE: JUNE 23, 1976

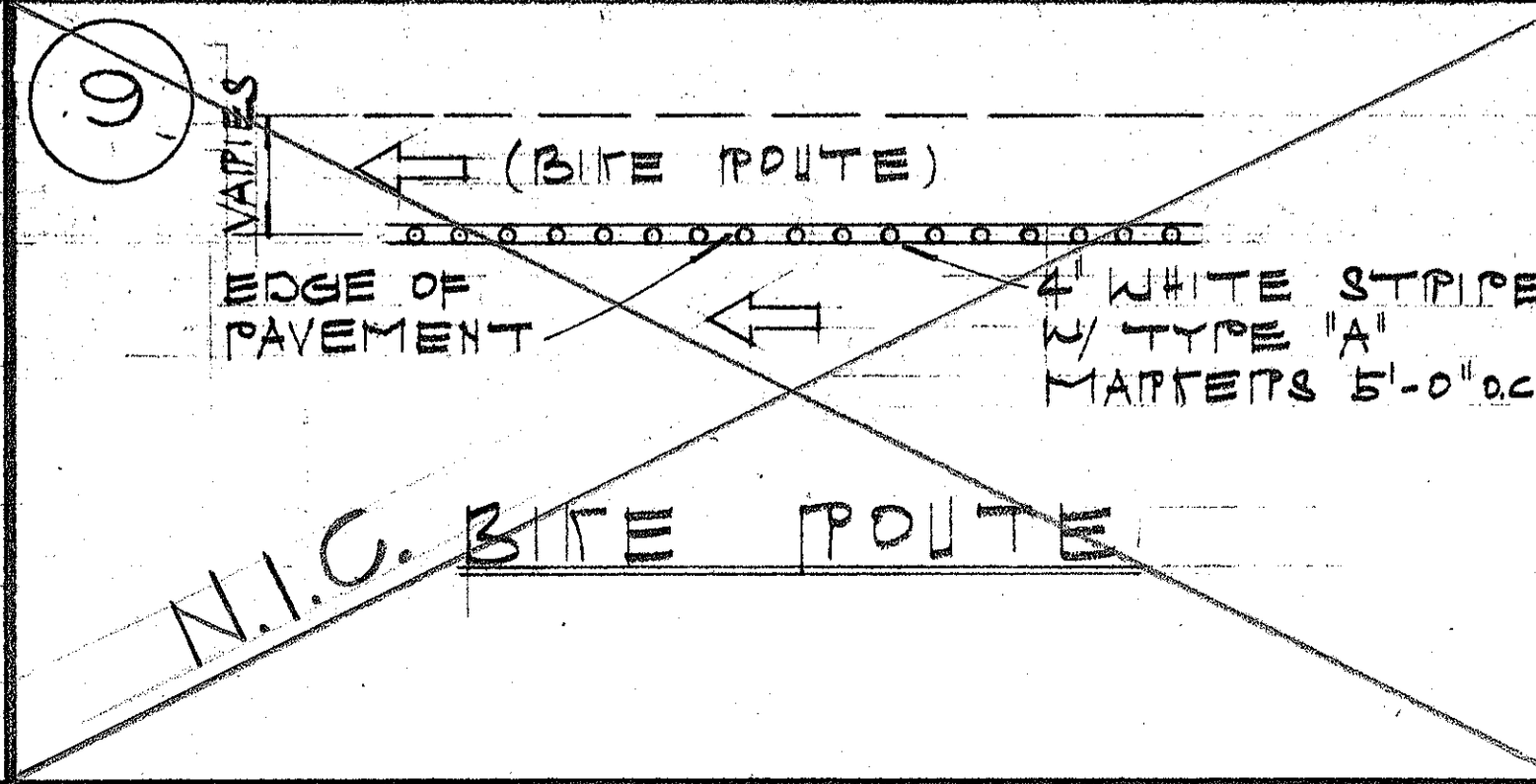
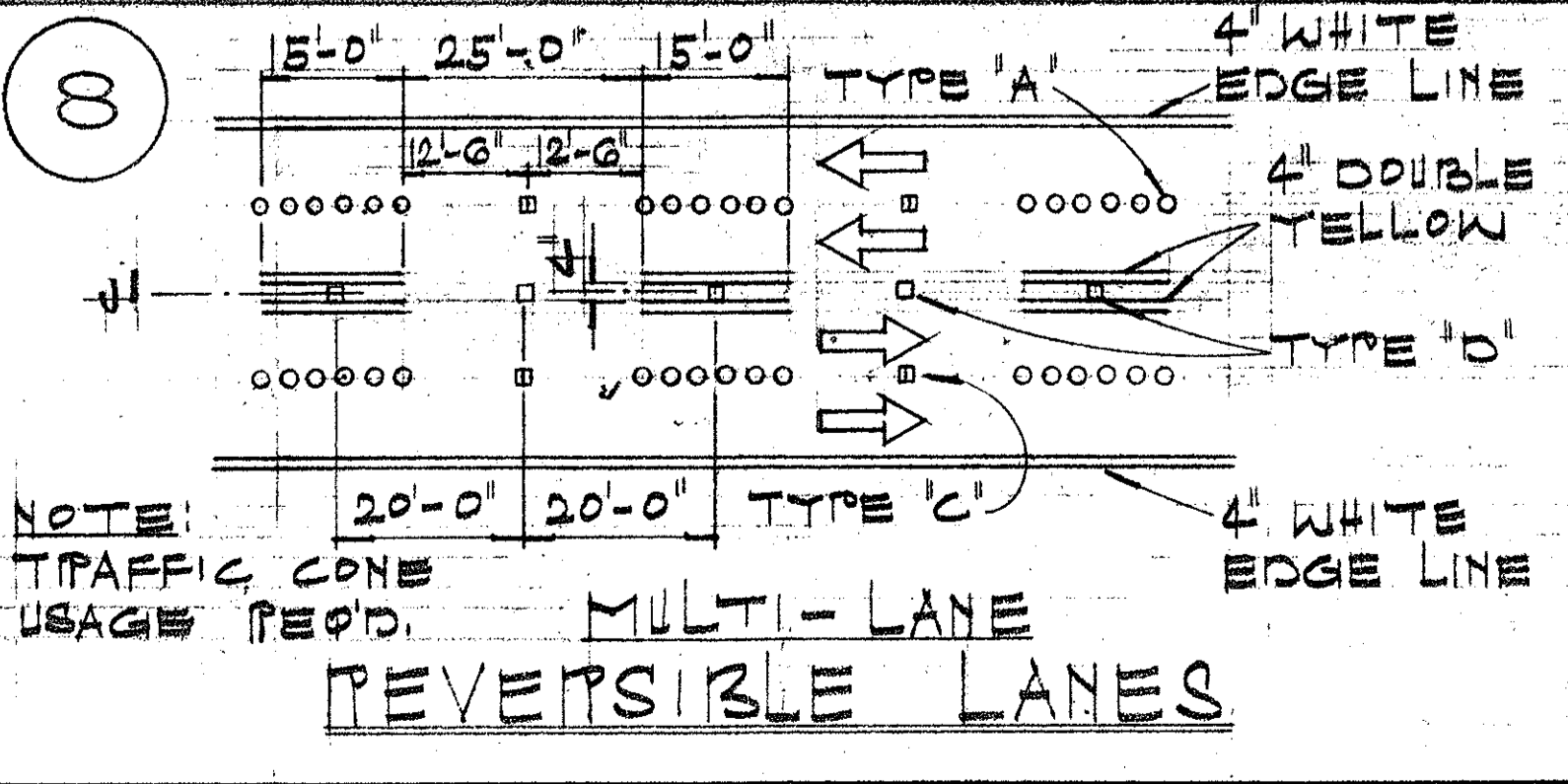
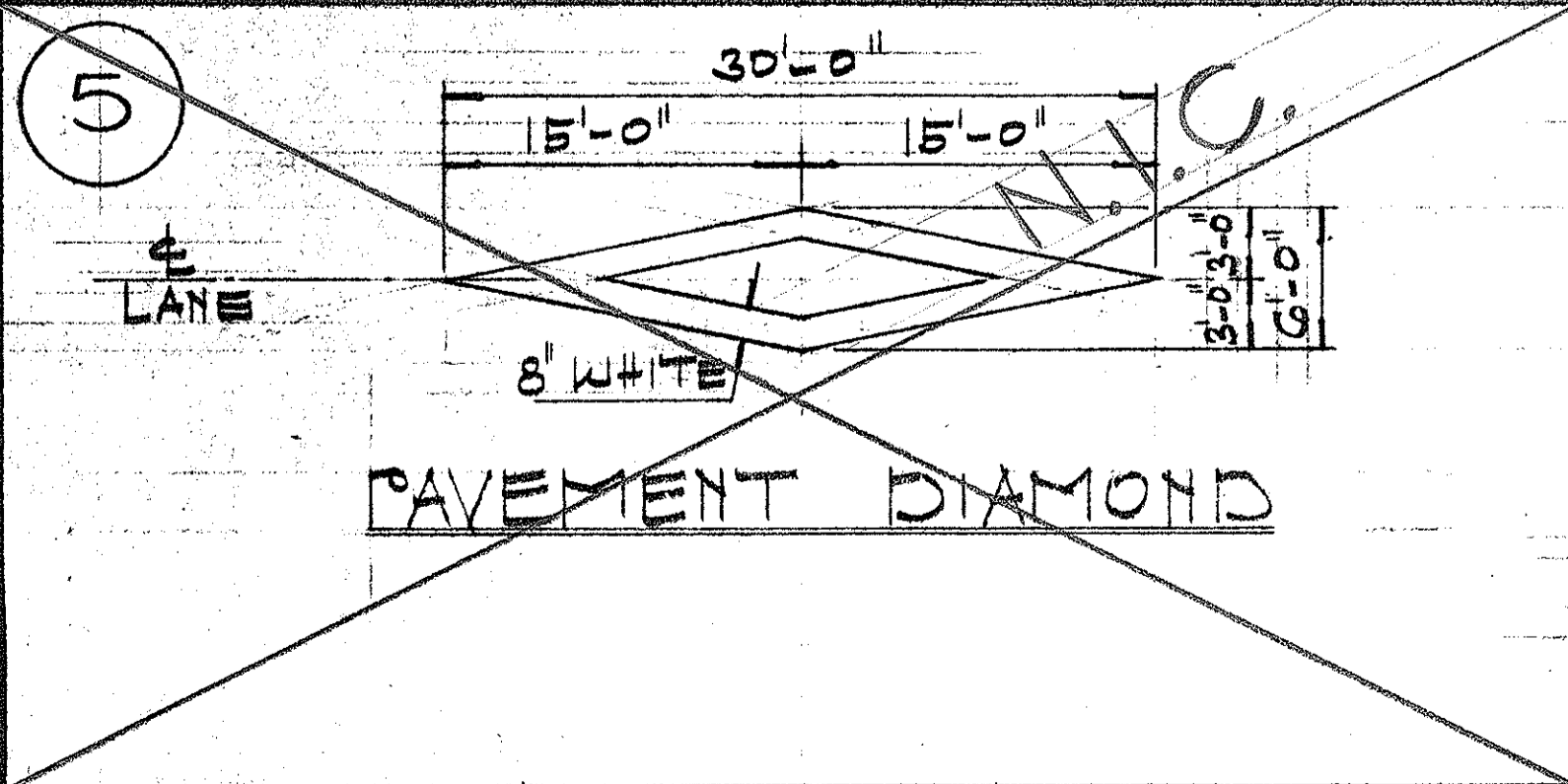
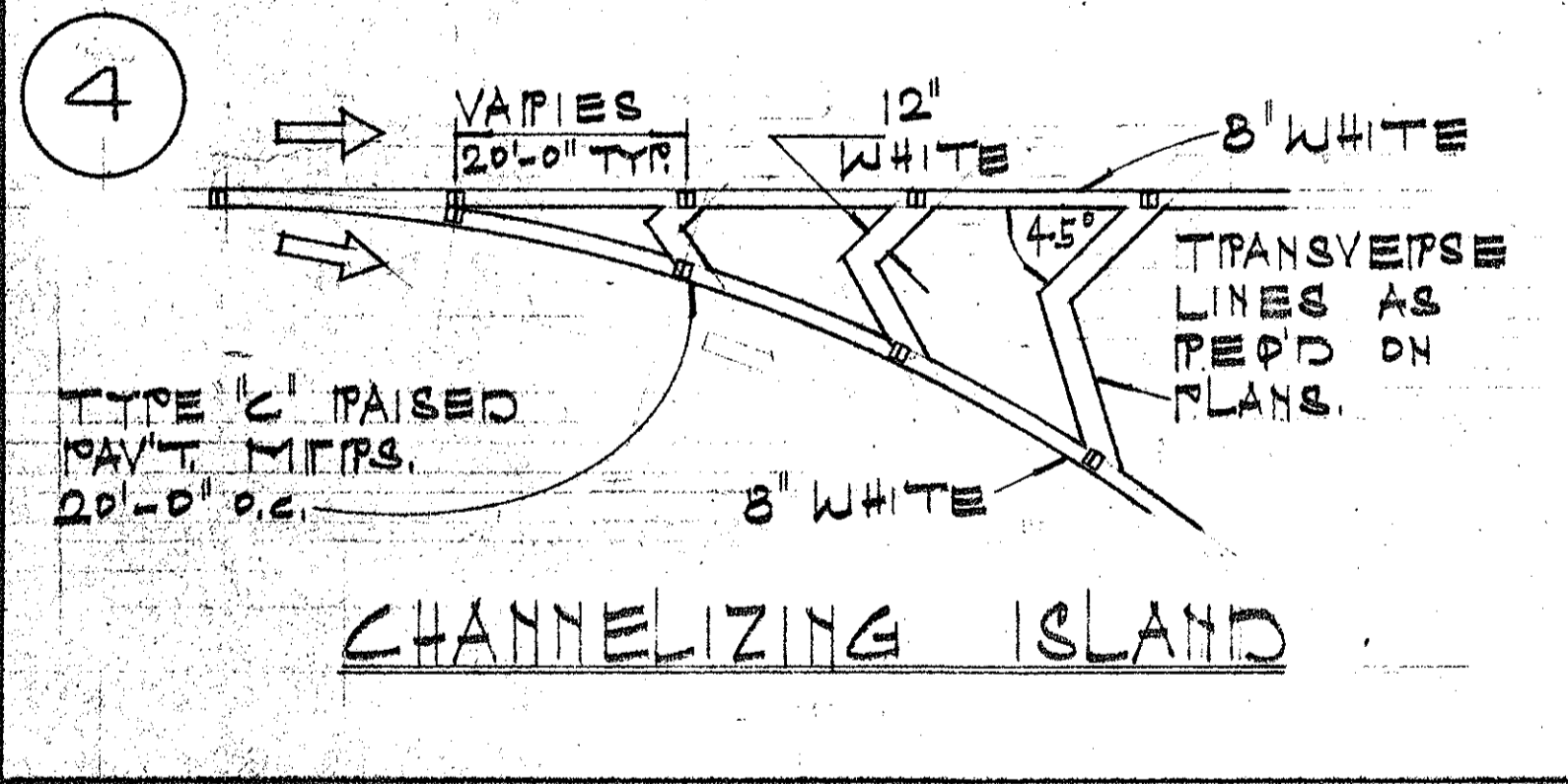
SHEET NO. 2 OF 3 SHEETS

| FED. ROAD DIST. NO. | STATE | FED. AID PROJ. NO. | FISCAL YEAR | SHEET NO. | TOTAL SHEETS |
|---------------------|-------|--------------------|-------------|-----------|--------------|
| HAWAII | HAW. | 1-FF-078(6) | 1976 | 50 | 142 |



GENERAL NOTES:

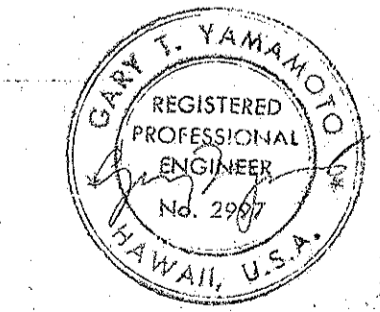
- PAVEMENT MAPPINGS SHALL CONFORM TO THE MANUAL ON UNIFORM TRAFFIC CONTROL DEVICES FOR STREETS & HIGHWAYS, 1971, & AS SHOWN ON THE PLANS
- LAYOUT OF PAVEMENT MAPPINGS & STRIPING SHALL BE DONE BY THE CONTRACTOR. THE CONTRACTOR SHALL CHECK LAYOUT OF MAPPINGS & STRIPING WITH THE ENGINEER PRIOR TO PERFORMING WORK.
- FOR ADDITIONAL PAVEMENT MARKING DETAILS SEE SHT. # DT300



DATE _____

DESIGNED BY _____

CHECKED BY _____



STATE OF HAWAII
DEPARTMENT OF TRANSPORTATION
HIGHWAYS DIVISION

TYPICAL DETAILS
MISCELLANEOUS
PAVEMENT MAPPINGS

NOT TO SCALE JULY 1976
SHEET NO. 5 OF 3 SHEETS