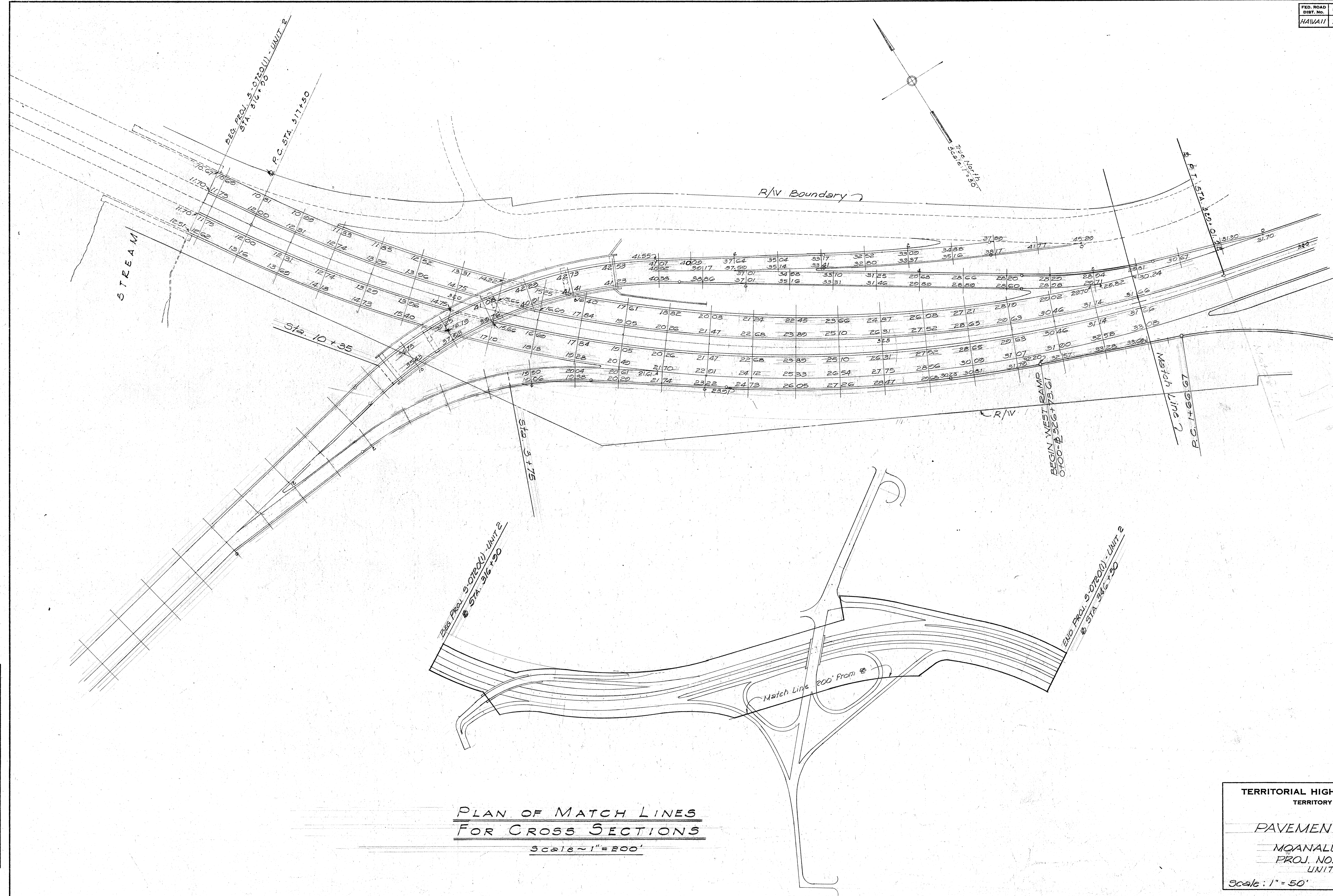


SURVEY PLOTTED BY	DATE
DRAWN BY	
CHECKED BY	
QUANTITIES CHECKED BY	
NOTE BOOK NO.	



**PLAN OF MATCH LINES  
FOR CROSS SECTIONS**  
Scale: 1" = 200'

**TERRITORIAL HIGHWAY DEPARTMENT**  
TERRITORY OF HAWAII

**PAVEMENT GRADES**

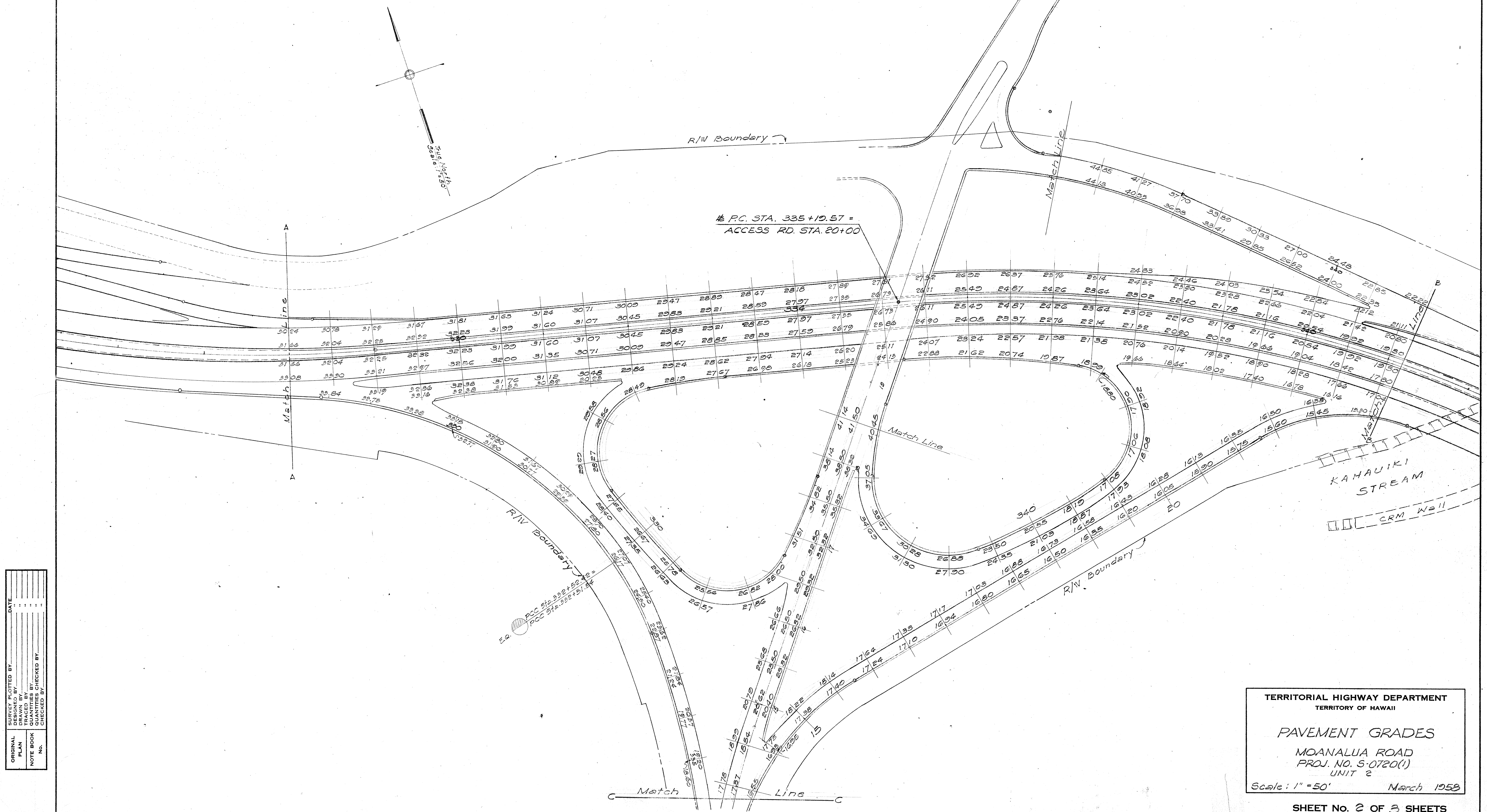
MOANALUA ROAD  
PROJ. NO. 5-0720(1)  
UNIT 2

Scale: 1" = 50' March 1958



FED. ROAD DIST. No.	STATE	FED. AID PROJ. No.	FISCAL YEAR	SHEET No.	TOTAL SHEETS
HAWAII	HAW	S-07001	1958	17	109

Unit 2



## TERRITORIAL HIGHWAY DEPARTMENT

### TERRITORY OF HAWAII

## PAVEMENT GRADES

MOANALUA ROAD  
PROJ. NO. S-0720(1)  
UNIT 2

Scale: 1" = 50' March 1958

SHEET No. 2 OF 3 SHEETS

5444.17

17

FED. ROAD DIST. NO.	STATE	FED. AID PROJ. NO.	FISCAL YEAR	SHEET NO.	TOTAL SHEETS
HAWAII	HAW	S-0720(1)	1958	18	109

UNIT 2

REVISED 6/5/59

END OF PROJECT  
S-0720(1) UNIT 2  
STA 346+50

P.T. STA 345+96.88

R/W Boundary

R/W Boundary

Conform EXISTING KING STREET

KAHAULIKU

R/W Boundary

ERR. FCC Sta. 12+97.66

FCC Sta. 12+18.64

ERR. P.T. Sta. 337+20.31

FCC Sta. 335+19.57  
Access Rd. Sta. 20+00

Match Line

Match Line

TERRITORIAL HIGHWAY DEPARTMENT  
TERRITORY OF HAWAII

PAVEMENT GRADES  
MOANALUA ROAD  
PROJ. NO. S-0720(1)  
UNIT 2

Scale: 1" = 50' March 1958

SHEET NO. 3 OF 3 SHEETS

5444.18

DESIGNED BY	DATE
DRAWN BY	
CHECKED BY	
NOTED BY	
QUANTITIES CHECKED BY	
CHECKED BY	