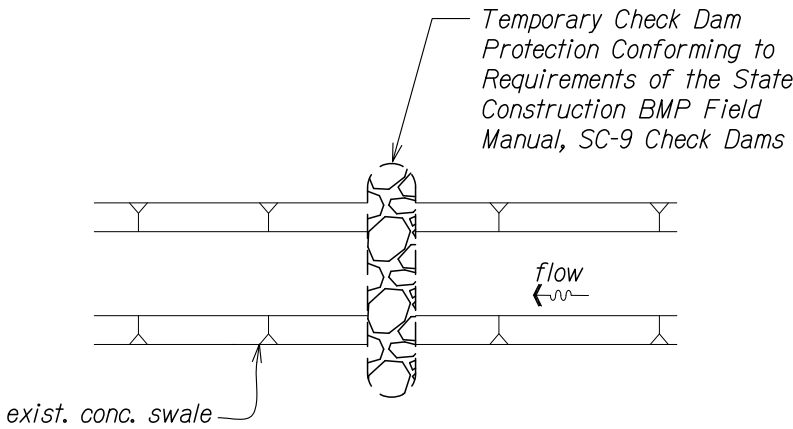


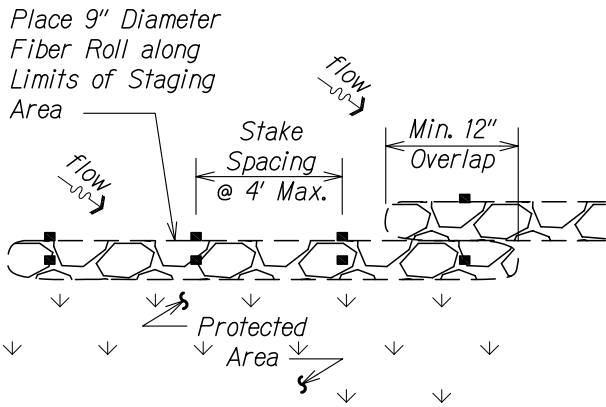
FED. ROAD DIST. NO.	STATE	PROJ. NO.	FISCAL YEAR	SHEET NO.	TOTAL SHEETS
HAWAII	HAW.	HWY-0-01-19	2020	ADD 17S-1	23



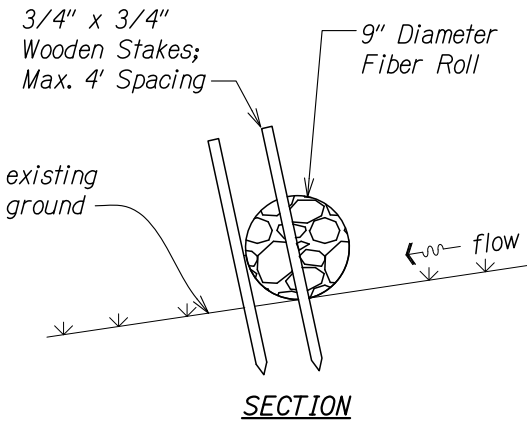
**PLAN**

**CHECK DAM DETAIL**

Not to Scale



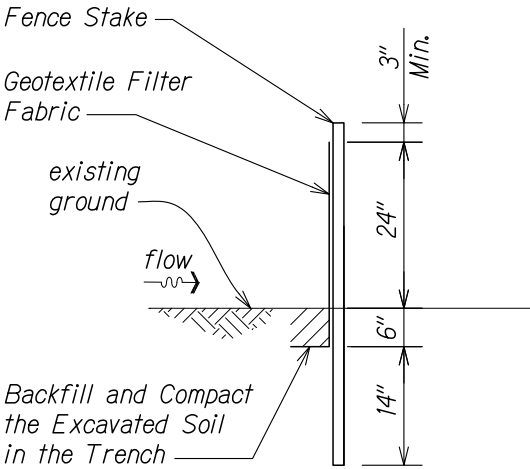
- PLAN**
- Note:
1. Fiber roll shall meet the requirements of the State Construction BMP Field Manual, SC-8 Compost Filter Berm.
  2. Contractor shall remove debris behind fiber roll when it has reached one-half the height of the fiber roll.



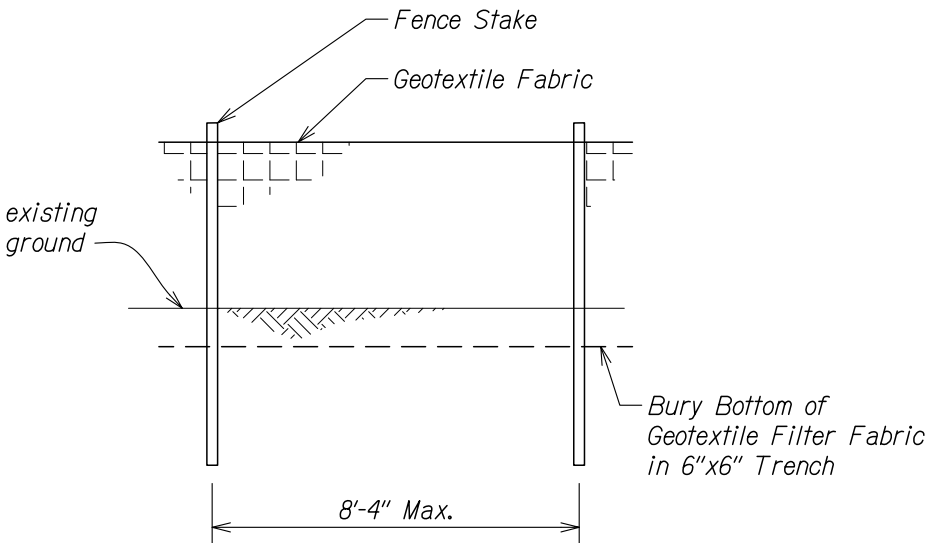
**SECTION**

**FIBER ROLL DETAIL**

Not to Scale



**SECTION**



**ELEVATION**

- Note:
1. Silt fence shall meet the requirements of the State Construction BMP Field Manual, SC-1.

**SILT FENCE DETAIL**

Not to Scale

STATE OF HAWAII  
DEPARTMENT OF TRANSPORTATION  
HIGHWAYS DIVISION

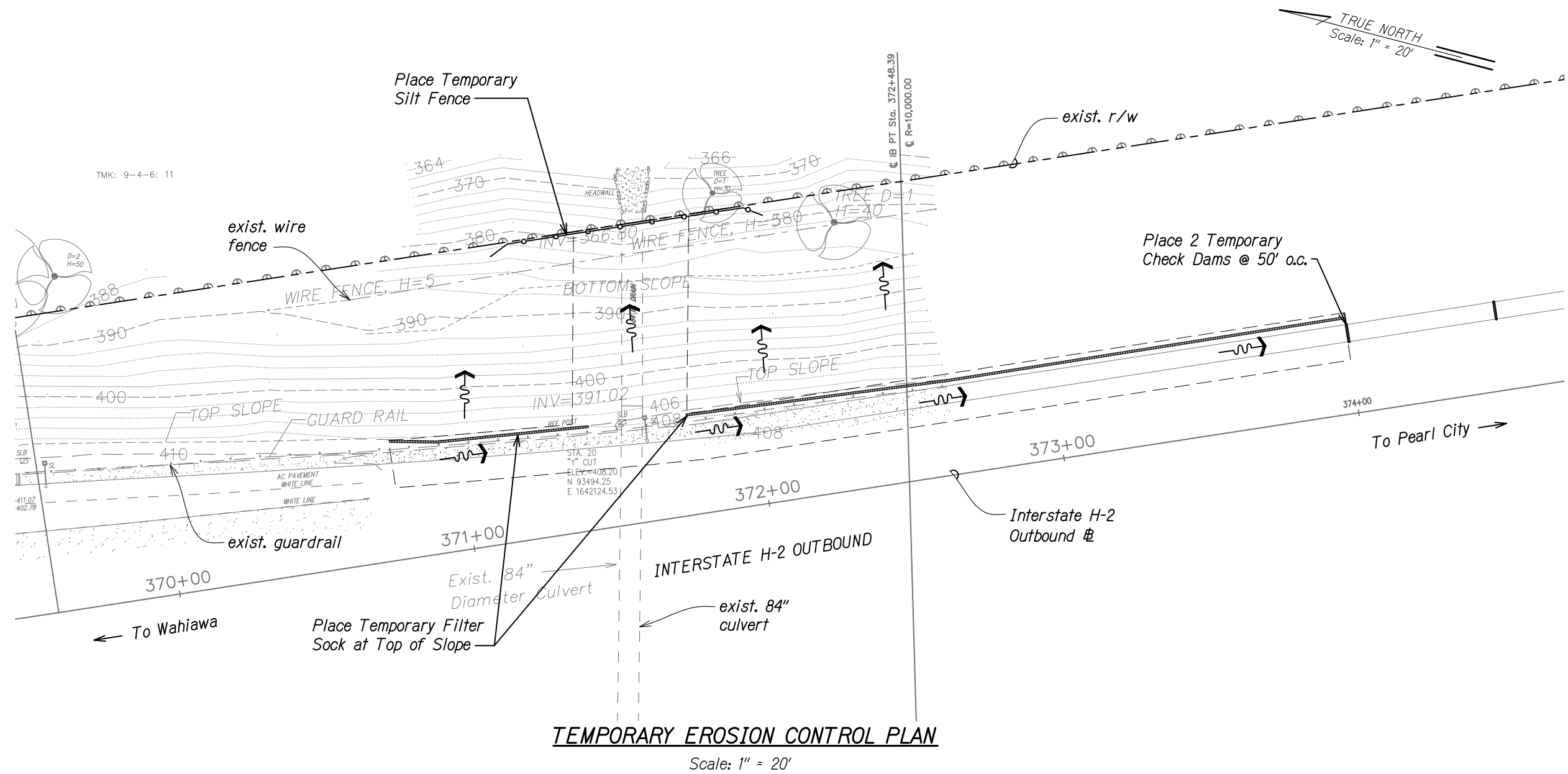
**WATER POLLUTION AND  
EROSION CONTROL DETAILS**  
INTERSTATE ROUTE H-2, 84-INCH  
Culvert Restoration at M.P. 2.10  
Project No. HWY-0-01-19  
Scale: None Date: May 2020

SHEET No. 1 OF 2 SHEETS

SURVEY PLOTTED BY	DATE
DESIGNED BY	
NOTED BY	
CHECKED BY	
APPROVED BY	
DATE	

00-LEC DETAILS.DWG 5/18/2020 2:45:48 PM

FED. ROAD DIST. NO.	STATE	PROJ. NO.	FISCAL YEAR	SHEET NO.	TOTAL SHEETS
HAWAII	HAW.	HWY-0-01-19	2020	ADD. 17S-2	23



- Note:**
- Sediment and Erosion Control BMP measures shown in the Contract Documents are minimum BMPs requirements and do not constitute an acceptable and/or complete Sediment and Erosion Control Plan. The Contractor shall incorporate additional BMPs based upon their means and methods considering site conditions, expected run off flows, and construction sequence in accordance with the Contract Documents including applicable permit document requirements. Cost shall be included in Pay Item 209.0100; Installation, Maintenance, Monitoring, and Removal of BMP.
  - The Contractor shall incorporate temporary silt fences, filter socks, and other BMPs for any culvert flow or flow diversion measures put in place.

STATE OF HAWAII  
DEPARTMENT OF TRANSPORTATION  
HIGHWAYS DIVISION

**TEMPORARY EC PLAN**  
**INTERSTATE ROUTE H-2, 84-INCH**  
**Culvert Restoration at M.P. 2.10**  
**Project No. HWY-0-01-19**

Scale: 1" = 20' Date: May 2020

SHEET No. 2 OF 2 SHEETS