

NOTES FOR TRAFFIC CONTROL PLAN:

- The permittee shall make minor adjustments at ramps, bridges, structures, etc. to fit field conditions.
- Cones or delineators shall be extended to a point where they are visible to approaching traffic.
- Traffic control devices shall be installed such that the sign or device farthest from the work area shall be placed first. The others shall then be placed progressively toward the work area.
- Regulatory and warning signs within the construction zone that are in conflict with the traffic control plans shall be removed or covered. All signs shall be restored upon completion of the work.
- Flaggers and/or police officers shall be in sight of each other or in direct communication at all times.
- When required by the issuing office, the permittee shall install a flashing arrow signal as shown on the traffic control plans.
- All traffic lanes shall be a minimum of 11 feet wide.
- All construction warning signs shall be promptly removed or covered whenever the message is not applicable or not in use.
- The backs of all signs used for traffic control shall be appropriately covered to preclude the display of inapplicable sign messages (i.e. when signs have message on both faces).
- At the end of each day's work, or as soon as the work is completed, the permittee shall remove all traffic control devices no longer needed to permit free and safe passage of public traffic. Removal shall be in the reverse order of installation. Replace existing faded or obliterate pavement markings that are necessary for safe traffic flow in the construction area with temporary or permanent markings before opening the roadway to public traffic each day.
- Replace permanent pavement markings and traffic signs upon completion of each phase of work.
- The Contractor shall control traffic in and out of driveways.
- Sign spacing (D), taper lengths (T) and spacing of cones or delineators shall be as shown on Table 1, on this sheet, unless otherwise noted on the Traffic Control Plans.
- All work zone traffic control devices shall comply with the "Statewide Guideline For Work Zone Traffic Control Devices," dated September 13, 2000.
- The Traffic Control Plans provided are based on the conceptual construction phasing and work areas shown. If the Contractor proposes to modify the construction phasing and work areas, the Contractor shall prepare and submit modified traffic control plans to the Engineer for approval at least 14 days prior to scheduling commencement of work.

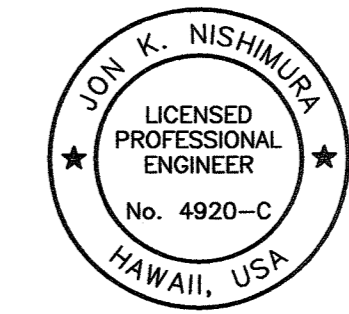
TABLE 1 FOR TRAFFIC CONTROL PLAN

POSTED SPEED LIMIT (M.P.H.)	SIGN SPACING (D) (FEET)	TAPER LENGTH (T) (FEET)		LONGITUDINAL BUFFER SPACE (B) (FEET)	SPACING OF CONES OR DELINEATORS (FEET)		
		W=12' OR LESS ①	W>GREATER THAN 12' ①		TAPER	TANGENT	WORK AREA
20	250	200	Wx17	35	20	20	10
25	250	200	Wx17	55	25	25	10
30	250	250	Wx20	85	30	30	10
35	250	250	Wx20	120	35	35	10
40	500	350	Wx30	170	40	40	10
45	500	550	Wx45	220	45	45	10
50	1000	600	Wx50	280	50	50	10
55	1000	700	Wx55	335	55	55	10

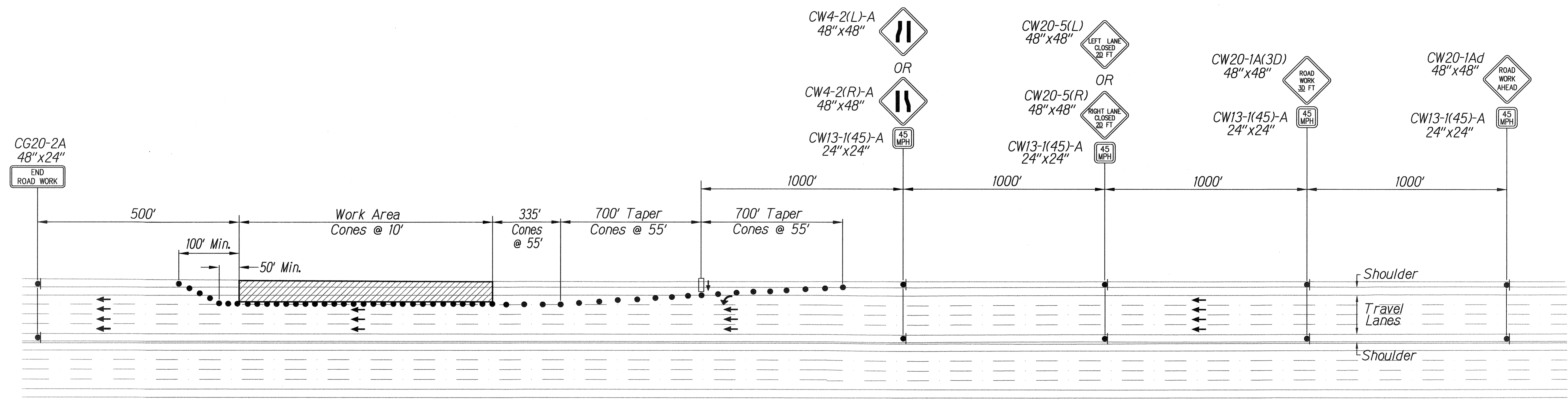
NOTE:

① W=Width of lane, shoulder, or offset

SURVEY PLOTTED BY	DATE
DRAWN BY	
TRACED BY	
NOTE BOOK	
QUANTITIES BY	
CHECKED BY	
No.	

 <p>This work was prepared by me or under my supervision.</p> <p><i>Jody K. Nishimura</i></p> <p>FUKUNAGA AND ASSOCIATES, INC.</p> <p>LICENSE EXPIRATION DATE: APRIL 30, 2012</p>	<p>STATE OF HAWAII DEPARTMENT OF TRANSPORTATION HIGHWAYS DIVISION</p> <p>TRAFFIC CONTROL PLAN</p> <p>GENERAL NOTES</p> <p><i>Interstate Route H-2 Freeway Lighting System Reconductoring Waiawa Interchange to Leilehua Interchange</i></p> <p>Project No. HWY-0-03-10M</p> <p>Scale: No Scale Date: August, 2010</p>
	<p>SHEET No. T-1 OF 20 SHEETS</p>

FED. ROAD DIST. NO.	STATE	PROJ. NO.	FISCAL YEAR	SHEET NO.	TOTAL SHEETS
HAWAII	HAW.	HWY-0-03-10M	2011	41	59



- LEGEND:**
- ▲ Sign
 - Cones or Delineator
 - Direction of traffic
 - ⚡ Flashing arrow signal
 - ▨ Proposed work area

**TYPICAL LANE CLOSURE ON DIVIDED HIGHWAY
(POSTED SPEED LIMIT 55 M.P.H.)**
Not to Scale

SURVEY PLOTTED BY	DATE
DRAWN BY	
DESIGNED BY	
NOTE BOOK	
QUANTITIES BY	
CHECKED BY	
N.	

Jon K. NISHIMURA
LICENSED PROFESSIONAL ENGINEER
No. 4920-C
HAWAII, USA

This work was prepared by me or under my supervision.

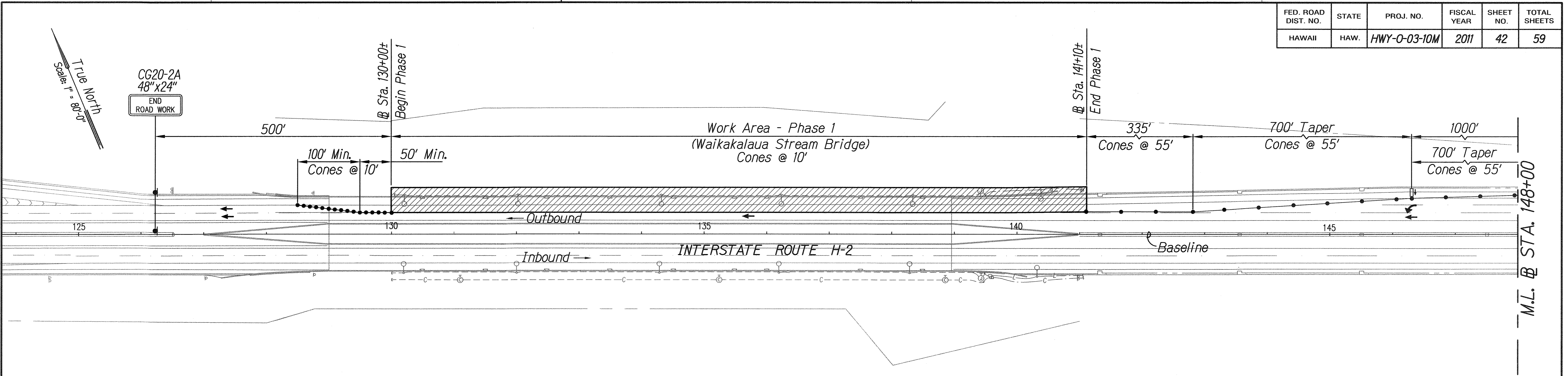
Jon Nishimura
FUKUNAGA AND ASSOCIATES, INC.
LICENSE EXPIRATION DATE: APRIL 30, 2012

STATE OF HAWAII
DEPARTMENT OF TRANSPORTATION
HIGHWAYS DIVISION

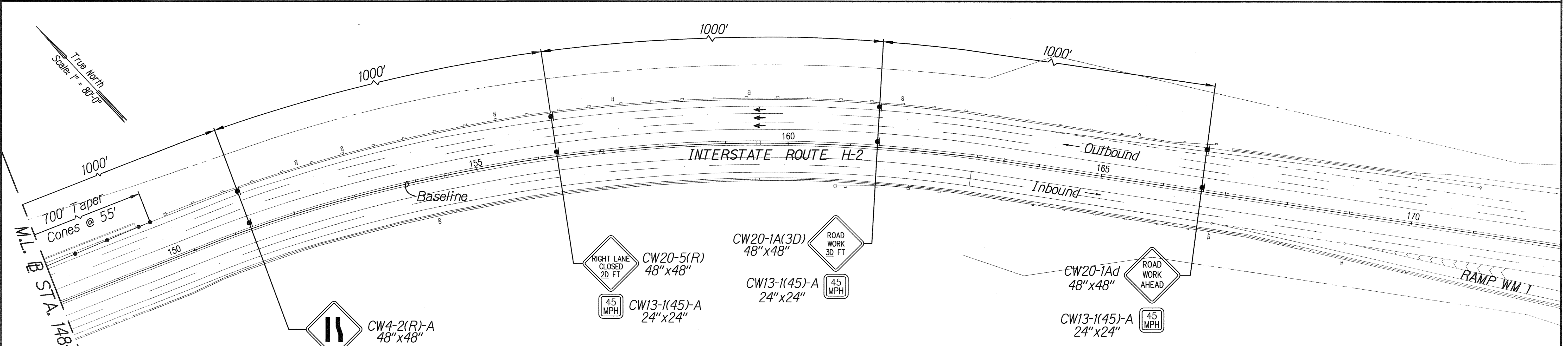
**TRAFFIC CONTROL PLAN
DETAILS**

Interstate Route H-2
Freeway Lighting System Reconductoring
Waialua Interchange to Leilehua Interchange
Project No. HWY-0-03-10M
Scale: Not to Scale Date: August, 2010

FED. ROAD DIST. NO.	STATE	PROJ. NO.	FISCAL YEAR	SHEET NO.	TOTAL SHEETS
HAWAII	HAW.	HWY-0-03-10M	2011	42	59



Note:
 Contractor shall be responsible for obtaining an approved Community Noise Variance for night work. The Application for Community Noise Variance has been submitted by the Engineer to the Dept. of Health for processing. (Reference: Standard Specification Section 107 - Legal Relations and Responsibility to Public, Paragraphs 107.02 through 107.05 for additional requirements.)



- LEGEND:**
- ▬ Sign
 - Cones or Delineator
 - Direction of traffic
 - ⚡ Flashing arrow signal
 - ▨ Proposed work area

PHASE 1 - WAIKAKALAUA STREAM BRIDGE (OUTBOUND)
 Scale: 1" = 80'-0"

SURVEY PLOTTED BY	DATE
DRAWN BY	
TRACED BY	
NOTE BOOK	
QUANTITIES BY	
CHECKED BY	
N.	

JOHN K. NISHIMURA
 LICENSED PROFESSIONAL ENGINEER
 No. 4920-C
 HAWAII, USA

This work was prepared by me or under my supervision.

Jon Nishimura
 FUKUNAGA AND ASSOCIATES, INC.
 LICENSE EXPIRATION DATE: APRIL 30, 2012

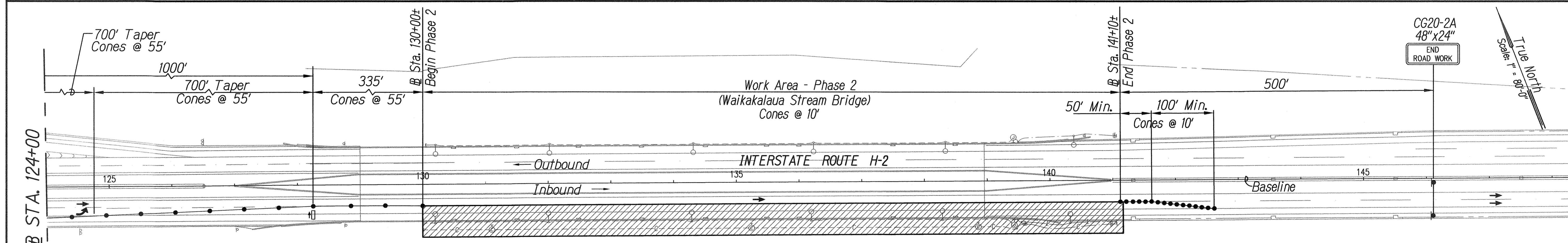
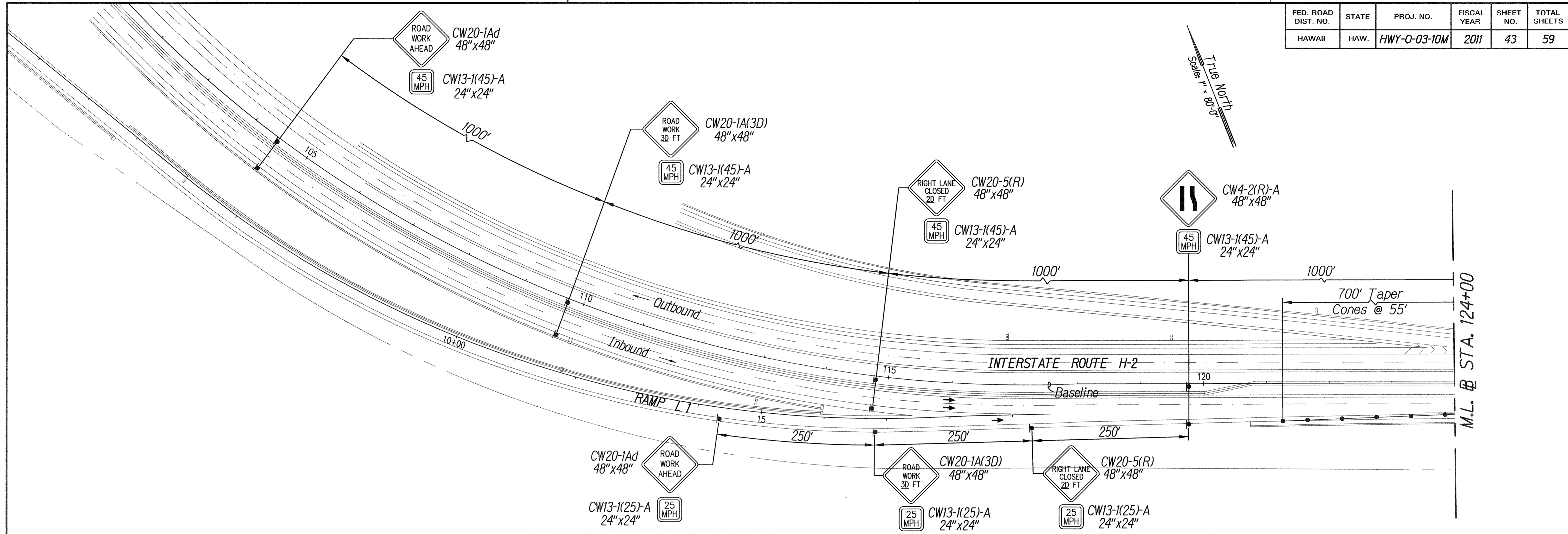
STATE OF HAWAII
 DEPARTMENT OF TRANSPORTATION
 HIGHWAYS DIVISION

TRAFFIC CONTROL PLAN
PHASE 1 (OUTBOUND)

Interstate Route H-2
 Freeway Lighting System Reconductoring
 Waiawa Interchange to Leilehua Interchange
 Project No. HWY-0-03-10M
 Scale: 1" = 80'-0" Date: August, 2010

SHEET No. T-3 OF 20 SHEETS

FED. ROAD DIST. NO.	STATE	PROJ. NO.	FISCAL YEAR	SHEET NO.	TOTAL SHEETS
HAWAII	HAW.	HWY-0-03-10M	2011	43	59



LEGEND:

- ▴ Sign
- Cones or Delineator
- ↑ Direction of traffic
- ⬇ Flashing arrow signal
- ▨ Proposed work area

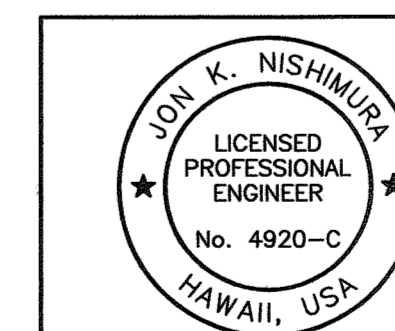
Note:

Contractor shall be responsible for obtaining an approved Community Noise Variance for night work. The Application for Community Noise Variance has been submitted by the Engineer to the Dept. of Health for processing. (Reference: Standard Specification Section 107 - Legal Relations and Responsibility to Public, Paragraphs 107.02 through 107.05 for additional requirements.)

PHASE 2 - WAIKAKALAUA STREAM BRIDGE (INBOUND)

Scale: 1" = 80'-0"

SURVEY PLOTTED BY	DATE
DRAWN BY	
TRACED BY	
NOTE BOOK	
QUANTITIES BY	
CHECKED BY	
N.	



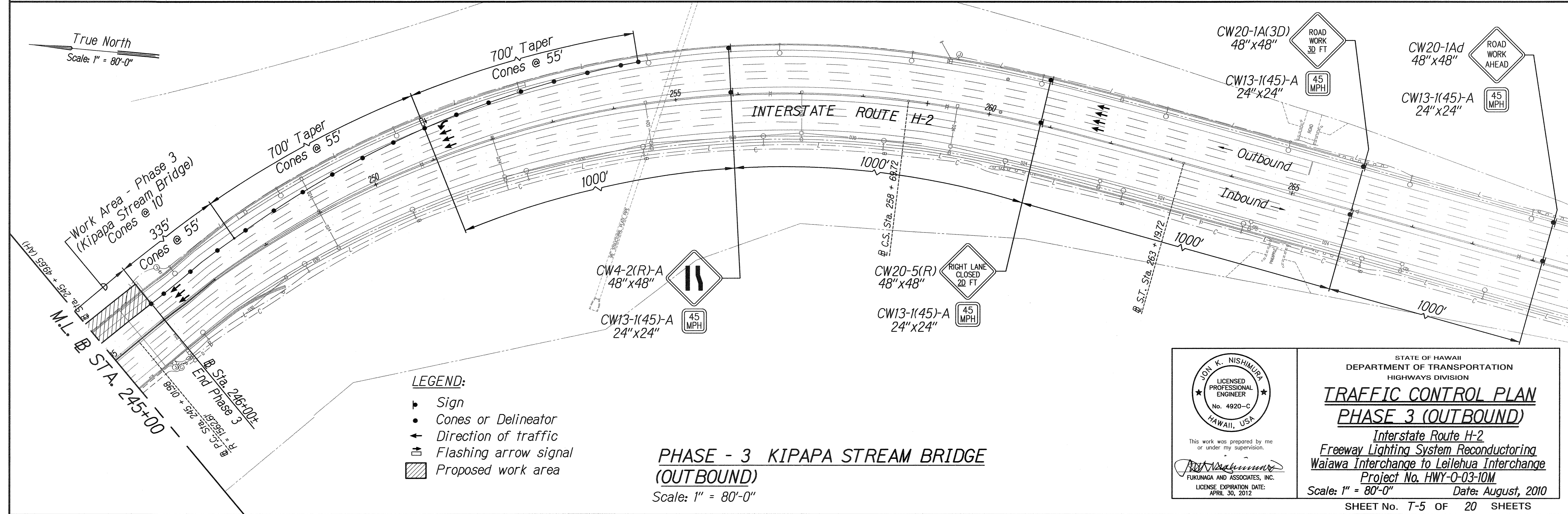
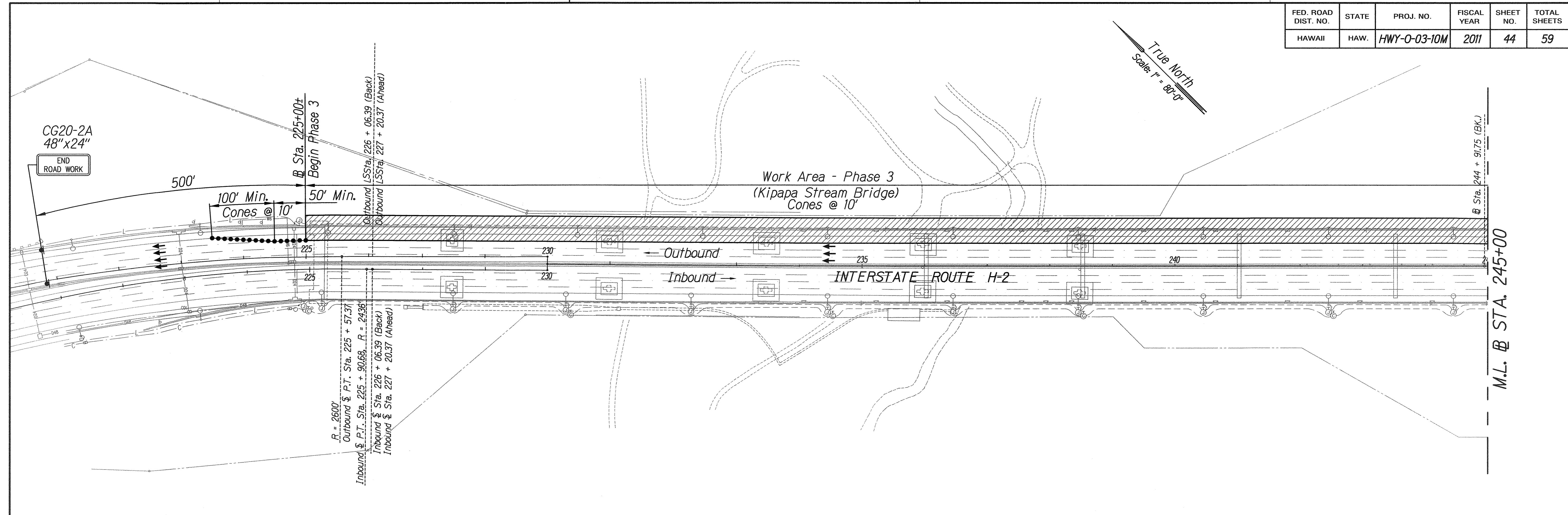
This work was prepared by me or under my supervision.
 Jody K. Nishimura
 FUKUNAGA AND ASSOCIATES, INC.
 LICENSE EXPIRATION DATE: APRIL 30, 2012

STATE OF HAWAII
 DEPARTMENT OF TRANSPORTATION
 HIGHWAYS DIVISION
TRAFFIC CONTROL PLAN
PHASE 2 (INBOUND)

Interstate Route H-2
 Freeway Lighting System Reconductoring
 Waiawa Interchange to Leilehua Interchange
 Project No. HWY-0-03-10M
 Scale: 1" = 80'-0" Date: August, 2010

SHEET No. T-4 OF 20 SHEETS

FED. ROAD DIST. NO.	STATE	PROJ. NO.	FISCAL YEAR	SHEET NO.	TOTAL SHEETS
HAWAII	HAW.	HWY-0-03-10M	2011	44	59



- LEGEND:**
- ▶ Sign
 - Cones or Delineator
 - ← Direction of traffic
 - ⚡ Flashing arrow signal
 - ▨ Proposed work area

SURVEY PLOTTED BY	DATE
DRAWN BY	
DESIGNED BY	
NOTE BOOK	
QUANTITIES BY	
CHECKED BY	
No.	

JOHN K. NISHIMURA
 LICENSED PROFESSIONAL ENGINEER
 No. 4920-C
 HAWAII, USA

This work was prepared by me or under my supervision.

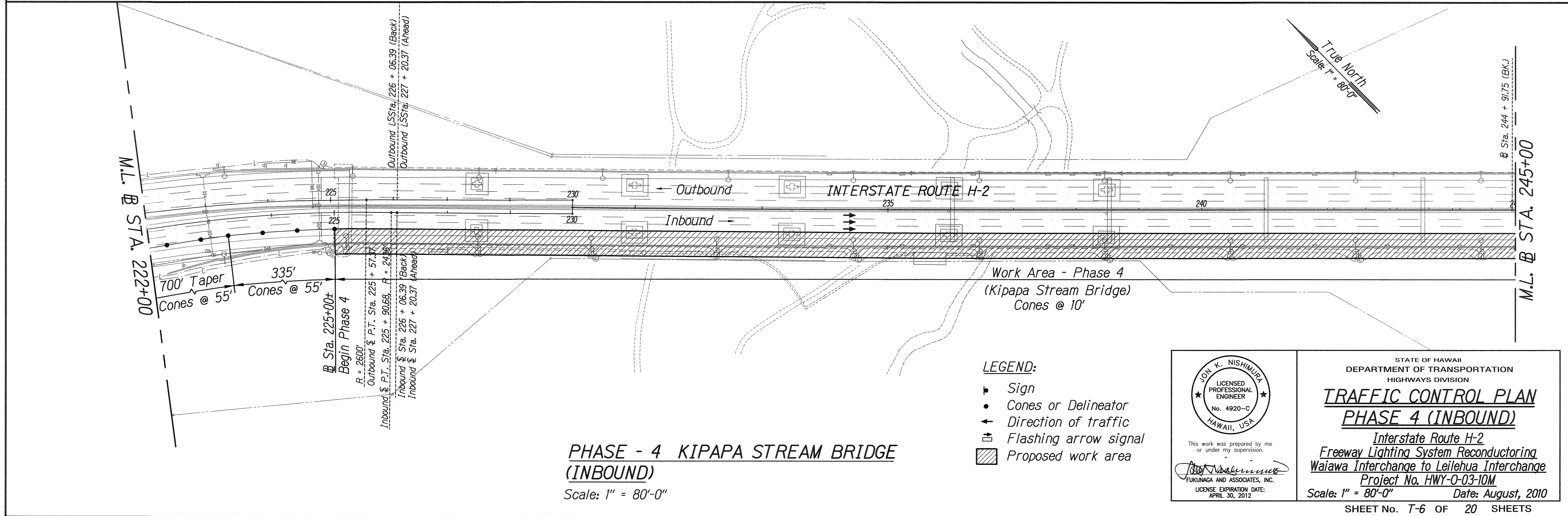
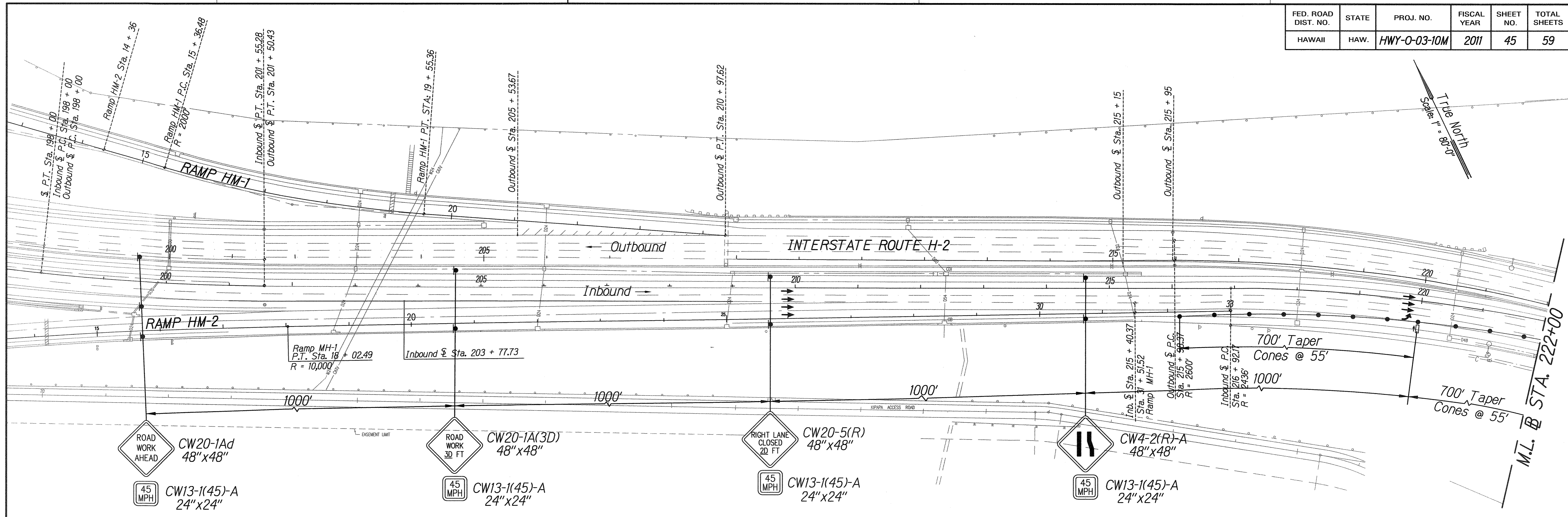
FUKUNAGA AND ASSOCIATES, INC.
 LICENSE EXPIRATION DATE: APRIL 30, 2012

STATE OF HAWAII
 DEPARTMENT OF TRANSPORTATION
 HIGHWAYS DIVISION

TRAFFIC CONTROL PLAN
PHASE 3 (OUTBOUND)
 Interstate Route H-2
 Freeway Lighting System Reconductoring
 Waiawa Interchange to Leilehua Interchange
 Project No. HWY-0-03-10M
 Scale: 1" = 80'-0" Date: August, 2010

SHEET No. 7-5 OF 20 SHEETS

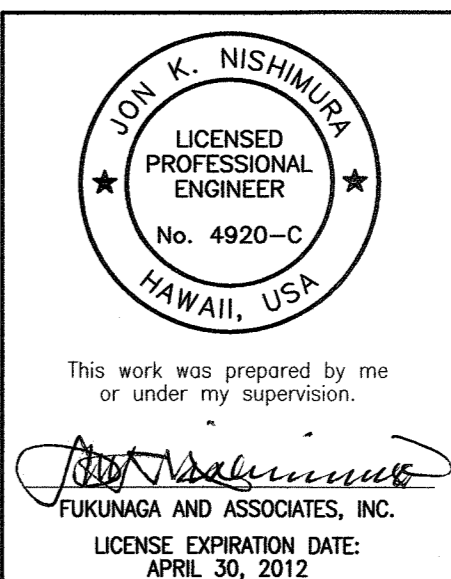
FED. ROAD DIST. NO.	STATE	PROJ. NO.	FISCAL YEAR	SHEET NO.	TOTAL SHEETS
HAWAII	HAW.	HWY-0-03-10M	2011	45	59



SURVEY PLOTTED BY	DATE
DRAWN BY	
TRACED BY	
NOTE BOOK	
QUANTITIES BY	
CHECKED BY	
N.	

PHASE - 4 KIPAPA STREAM BRIDGE (INBOUND)
Scale: 1" = 80'-0"

- LEGEND:**
- ▬ Sign
 - Cones or Delineator
 - ← Direction of traffic
 - ⚡ Flashing arrow signal
 - ▨ Proposed work area



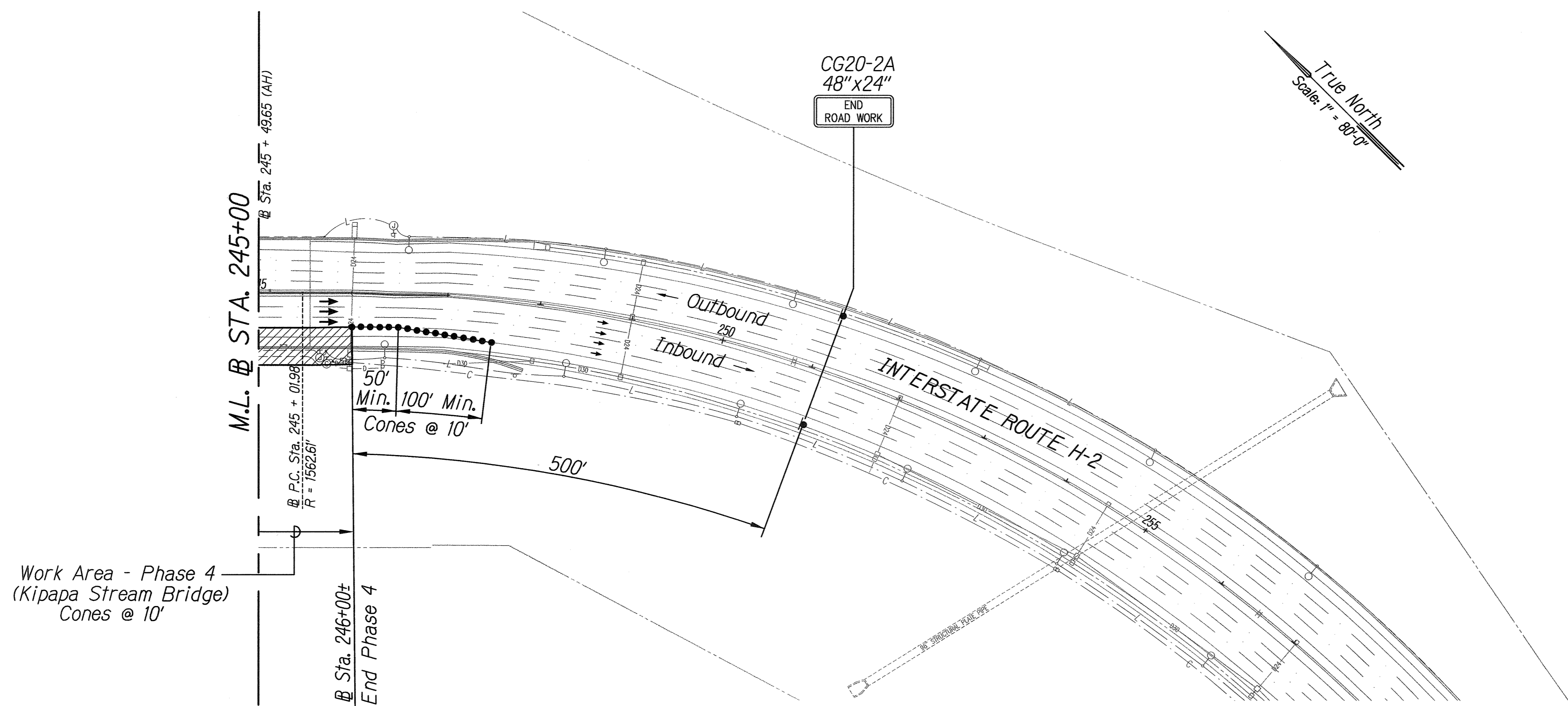
STATE OF HAWAII
DEPARTMENT OF TRANSPORTATION
HIGHWAYS DIVISION

**TRAFFIC CONTROL PLAN
PHASE 4 (INBOUND)**

Interstate Route H-2
Freeway Lighting System Reconductoring
Waialua Interchange to Leilehua Interchange
Project No. HWY-0-03-10M
Scale: 1" = 80'-0" Date: August, 2010

SHEET No. T-6 OF 20 SHEETS

FED. ROAD DIST. NO.	STATE	PROJ. NO.	FISCAL YEAR	SHEET NO.	TOTAL SHEETS
HAWAII	HAW.	HWY-0-03-10M	2011	46	59

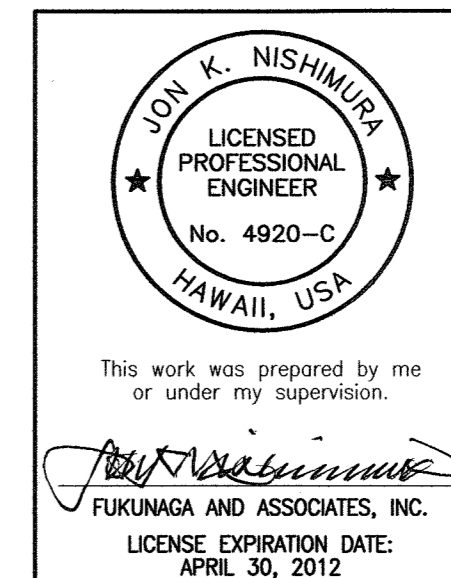


Work Area - Phase 4
(Kipapa Stream Bridge)
Cones @ 10'

- LEGEND:**
- Sign
 - Cones or Delineator
 - ← Direction of traffic
 - ⚡ Flashing arrow signal
 - ▨ Proposed work area

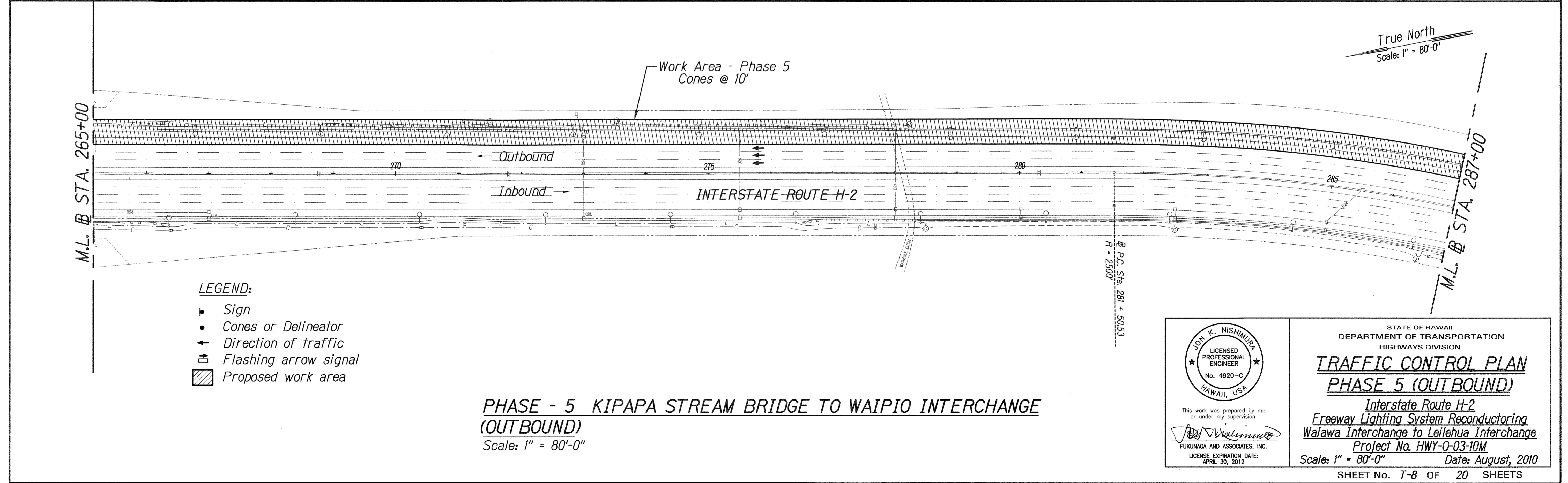
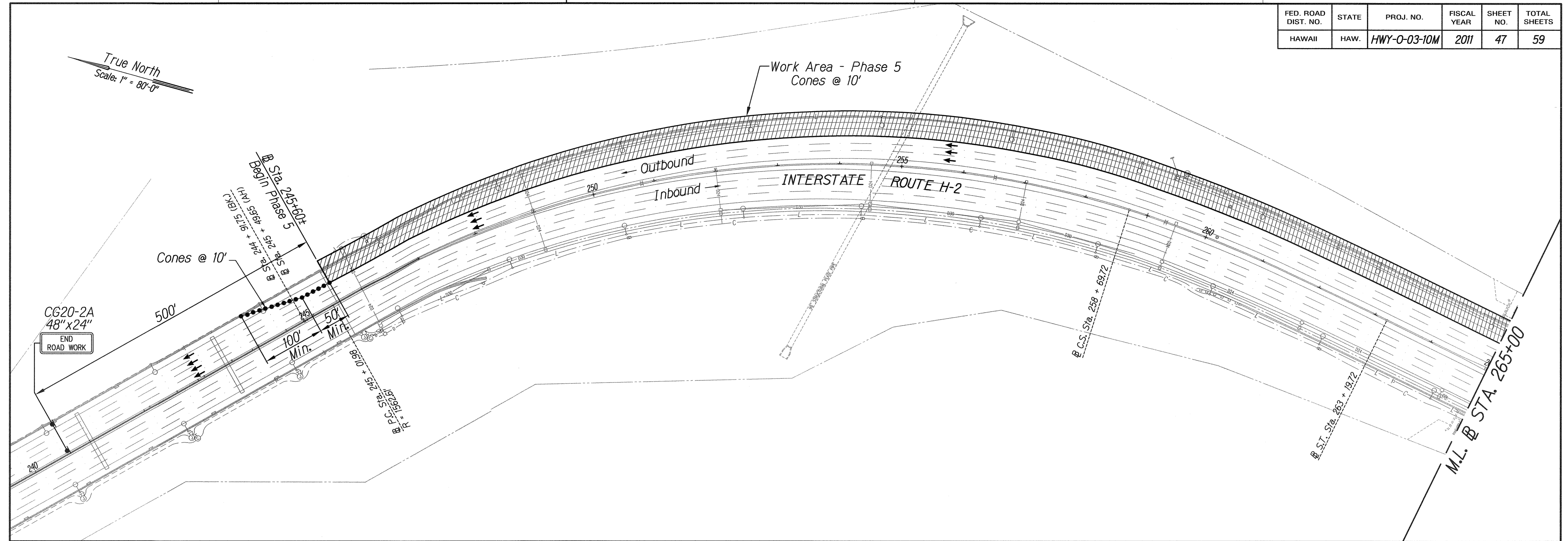
**PHASE - 4 KIPAPA STREAM BRIDGE
(INBOUND)**
Scale: 1" = 80'-0"

SURVEY PLOTTED BY	DATE
DRAWN BY	
DESIGNED BY	
NOTE BOOK	
QUANTITIES BY	
CHECKED BY	
No.	



STATE OF HAWAII
DEPARTMENT OF TRANSPORTATION
HIGHWAYS DIVISION
TRAFFIC CONTROL PLAN
PHASE 4 (INBOUND)
Interstate Route H-2
Freeway Lighting System Reconductoring
Waialua Interchange to Leilehua Interchange
Project No. HWY-0-03-10M
Scale: 1" = 80'-0" Date: August, 2010
SHEET No. 7-7 OF 20 SHEETS

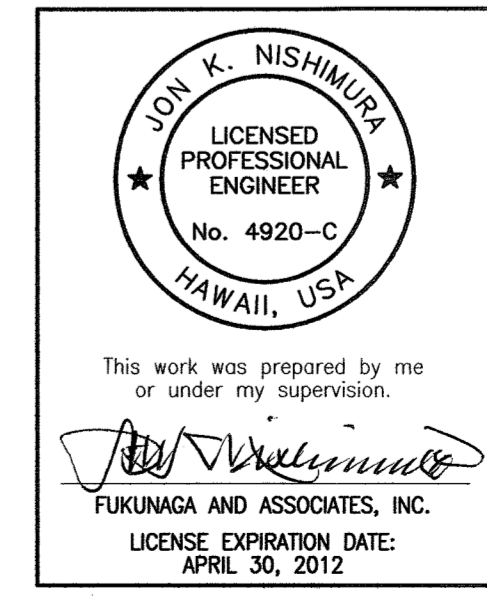
FED. ROAD DIST. NO.	STATE	PROJ. NO.	FISCAL YEAR	SHEET NO.	TOTAL SHEETS
HAWAII	HAW.	HWY-0-03-10M	2011	47	59



- LEGEND:**
- ▶ Sign
 - Cones or Delineator
 - ← Direction of traffic
 - ⚡ Flashing arrow signal
 - ▨ Proposed work area

PHASE - 5 KIPAPA STREAM BRIDGE TO WAIPIO INTERCHANGE (OUTBOUND)
 Scale: 1" = 80'-0"

SURVEY PLOTTED BY	DATE
DRAWN BY	
CHECKED BY	
NOTE BOOK	
QUANTITIES BY	
CHECKED BY	
N.	



STATE OF HAWAII
 DEPARTMENT OF TRANSPORTATION
 HIGHWAYS DIVISION

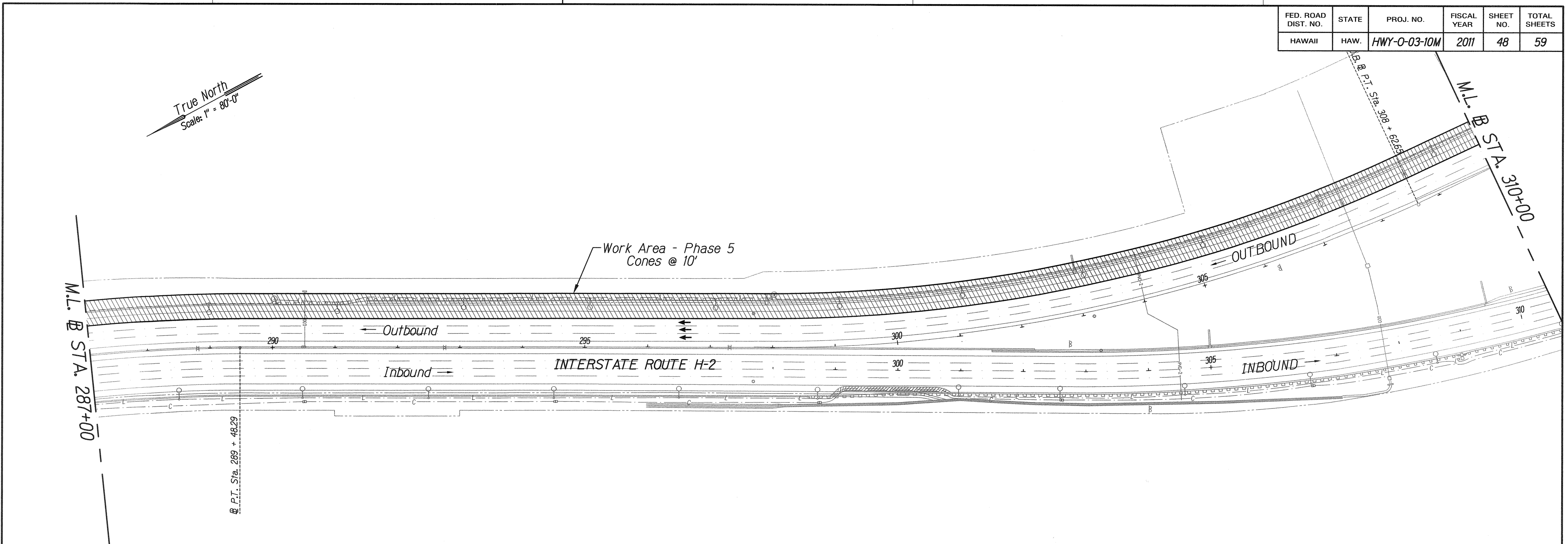
TRAFFIC CONTROL PLAN
PHASE 5 (OUTBOUND)

Interstate Route H-2
 Freeway Lighting System Reconductoring
 Waiawa Interchange to Leilehua Interchange
 Project No. HWY-0-03-10M
 Scale: 1" = 80'-0" Date: August, 2010

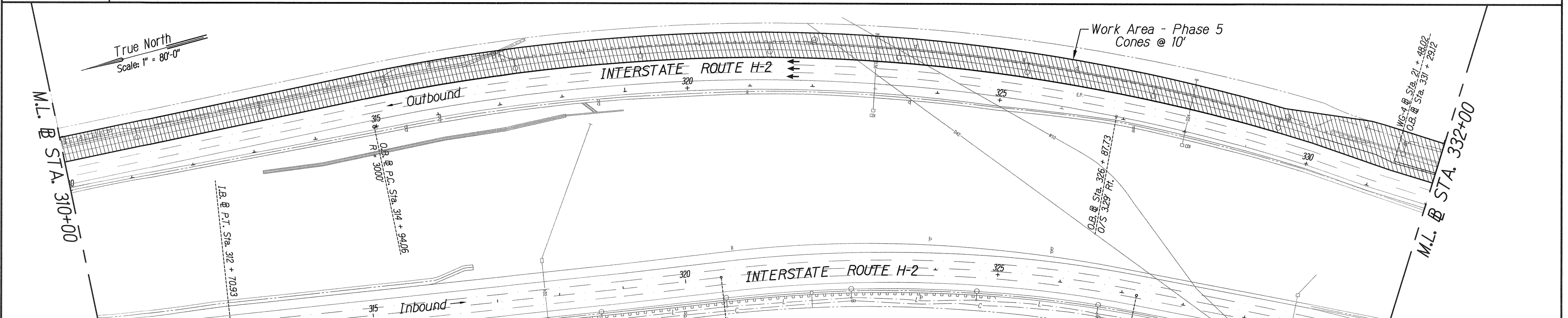
SHEET No. 7-8 OF 20 SHEETS

FED. ROAD DIST. NO.	STATE	PROJ. NO.	FISCAL YEAR	SHEET NO.	TOTAL SHEETS
HAWAII	HAW.	HWY-0-03-10M	2011	48	59

True North
Scale: 1" = 80'-0"



True North
Scale: 1" = 80'-0"



SURVEY PLOTTED BY	DATE
DRAWN BY	
TRACED BY	
NOTE BOOK	
QUANTITIES BY	
CHECKED BY	

PHASE - 5 KIPAPA STREAM BRIDGE TO WAIPIO INTERCHANGE (OUTBOUND)
Scale: 1" = 80'-0"

- LEGEND:**
- ▴ Sign
 - Cones or Delineator
 - ← Direction of traffic
 - ⚡ Flashing arrow signal
 - ▨ Proposed work area

JOY K. NISHIMURA
LICENSED PROFESSIONAL ENGINEER
No. 4920-C
HAWAII, USA

This work was prepared by me or under my supervision.

FUKUNAGA AND ASSOCIATES, INC.
LICENSE EXPIRATION DATE: APRIL 30, 2012

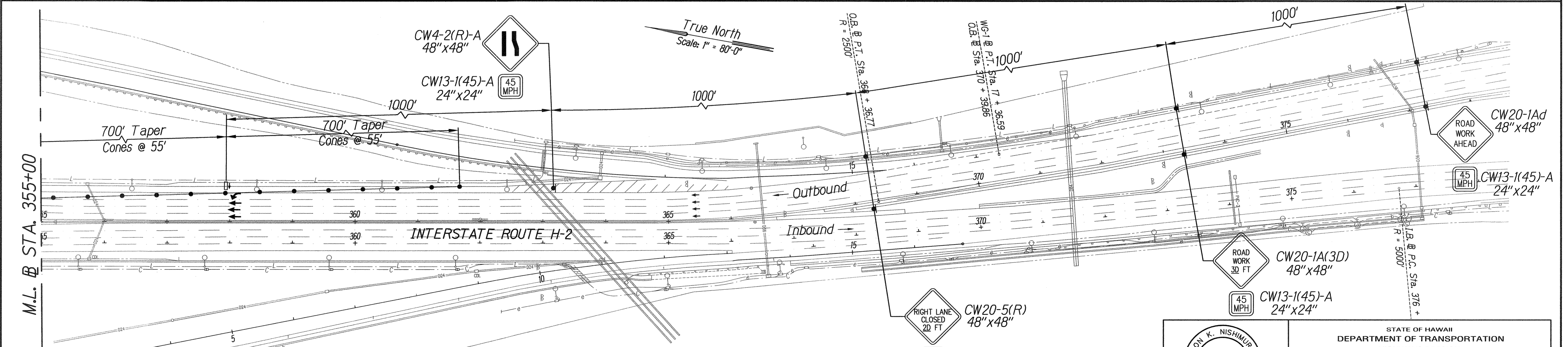
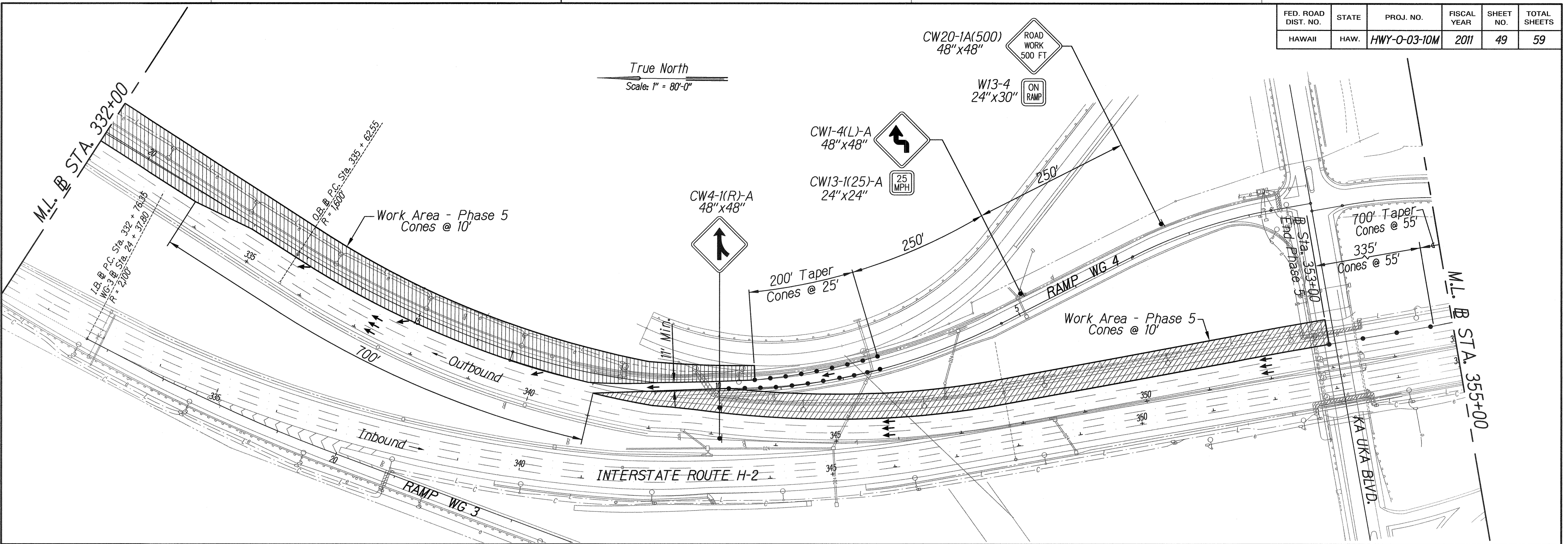
STATE OF HAWAII
DEPARTMENT OF TRANSPORTATION
HIGHWAYS DIVISION

TRAFFIC CONTROL PLAN
PHASE 5 (OUTBOUND)

Interstate Route H-2
Freeway Lighting System Reconductoring
Waiawa Interchange to Leilehua Interchange
Project No. HWY-0-03-10M
Scale: 1" = 80'-0" Date: August, 2010

SHEET No. T-9 OF 20 SHEETS

FED. ROAD DIST. NO.	STATE	PROJ. NO.	FISCAL YEAR	SHEET NO.	TOTAL SHEETS
HAWAII	HAW.	HWY-0-03-10M	2011	49	59



SURVEY PLOTTED BY	DATE
DRAWN BY	
TRACED BY	
NOTE BOOK	
QUANTITIES BY	
CHECKED BY	
N.	

- LEGEND:**
- ▬ Sign
 - Cones or Delineator
 - ← Direction of traffic
 - ⚡ Flashing arrow signal
 - ▨ Proposed work area

PHASE - 5 KIPAPA STREAM BRIDGE TO WAIPIO INTERCHANGE (OUTBOUND)
 Scale: 1" = 80'-0"

JOHN K. NISHIMURA
 LICENSED PROFESSIONAL ENGINEER
 No. 4920-C
 HAWAII, USA

This work was prepared by me or under my supervision.

FUKUNAGA AND ASSOCIATES, INC.
 LICENSE EXPIRATION DATE: APRIL 30, 2012

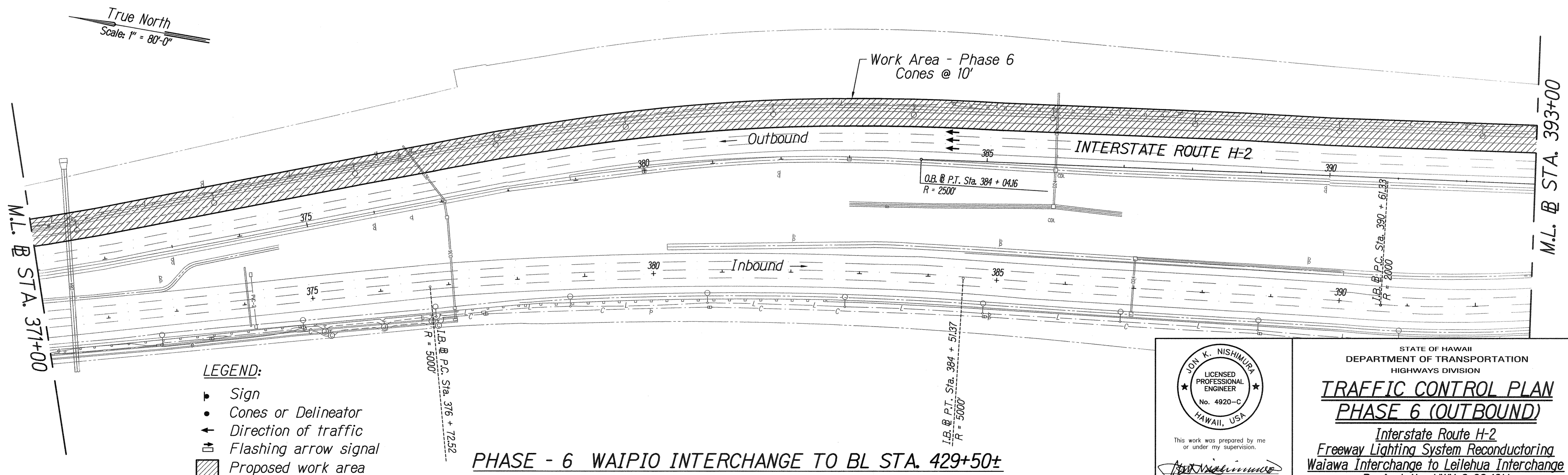
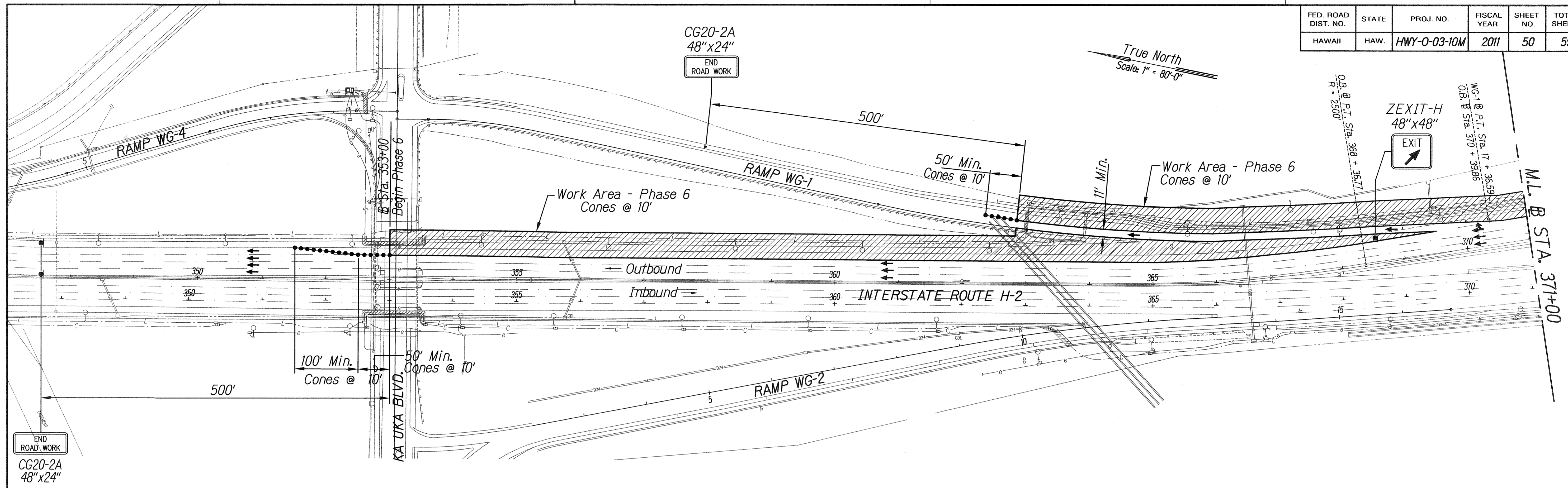
STATE OF HAWAII
 DEPARTMENT OF TRANSPORTATION
 HIGHWAYS DIVISION

**TRAFFIC CONTROL PLAN
 PHASE 5 (OUTBOUND)**

Interstate Route H-2
 Freeway Lighting System Reconductoring
 Waiawa Interchange to Leilehua Interchange
 Project No. HWY-0-03-10M
 Scale: 1" = 80'-0" Date: August, 2010

SHEET No. 7-10 OF 20 SHEETS

FED. ROAD DIST. NO.	STATE	PROJ. NO.	FISCAL YEAR	SHEET NO.	TOTAL SHEETS
HAWAII	HAW.	HWY-0-03-10M	2011	50	59



- LEGEND:**
- ▲ Sign
 - Cones or Delineator
 - ↑ Direction of traffic
 - ⚡ Flashing arrow signal
 - ▨ Proposed work area

PHASE - 6 WAIPIO INTERCHANGE TO BL STA. 429+50± (OUTBOUND)
Scale: 1" = 80'-0"

SURVEY PLOTTED BY	DATE
DRAWN BY	
TRACED BY	
NOTE BOOK	
QUANTITIES BY	
CHECKED BY	

JOHN K. NISHIMURA
LICENSED PROFESSIONAL ENGINEER
No. 4920-C
HAWAII, USA

This work was prepared by me or under my supervision.

Jon Nishimura
FUKUNAGA AND ASSOCIATES, INC.
LICENSE EXPIRATION DATE:
APRIL 30, 2012

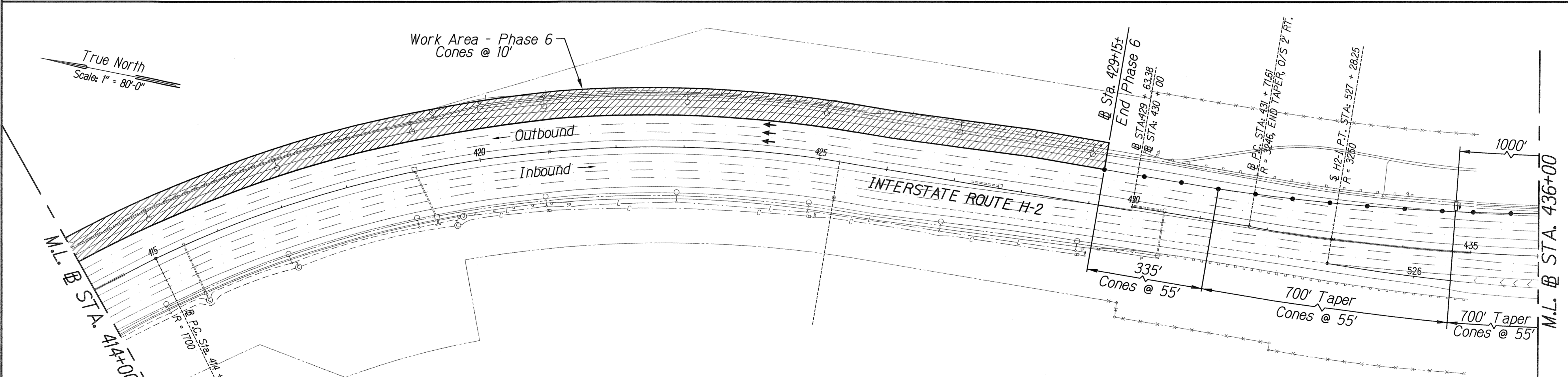
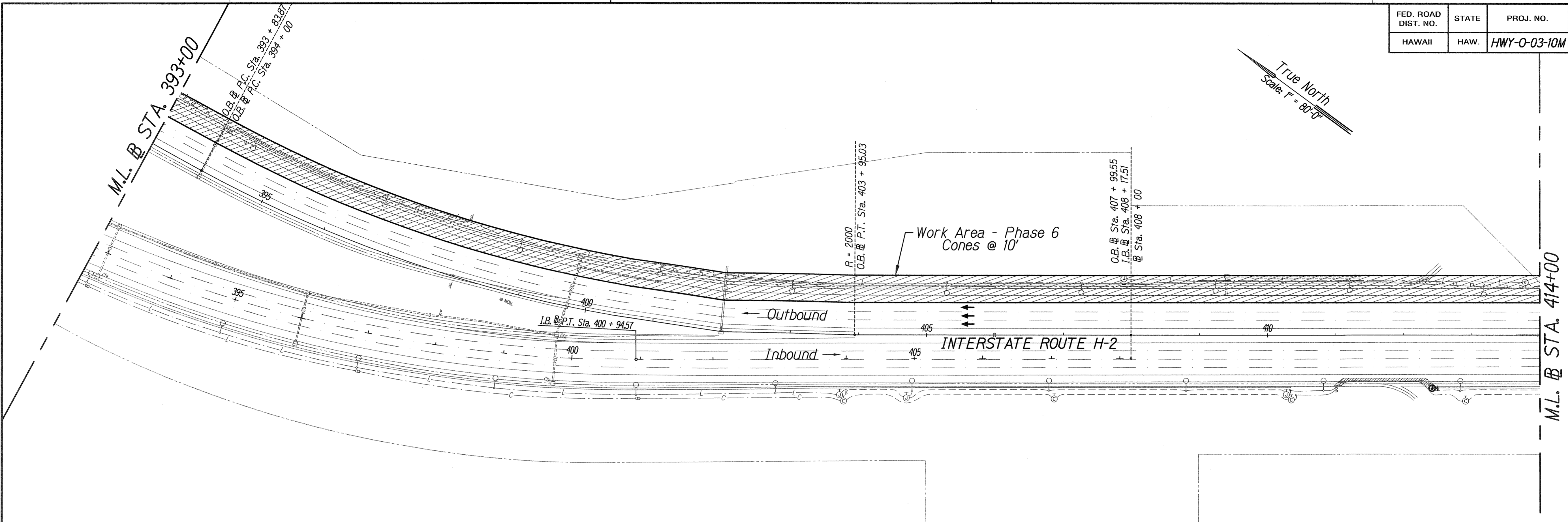
STATE OF HAWAII
DEPARTMENT OF TRANSPORTATION
HIGHWAYS DIVISION

**TRAFFIC CONTROL PLAN
PHASE 6 (OUTBOUND)**

Interstate Route H-2
Freeway Lighting System Reconductoring
Waiawa Interchange to Leilehua Interchange
Project No. HWY-0-03-10M
Scale: 1" = 80'-0" Date: August, 2010

SHEET No. T-11 OF 20 SHEETS

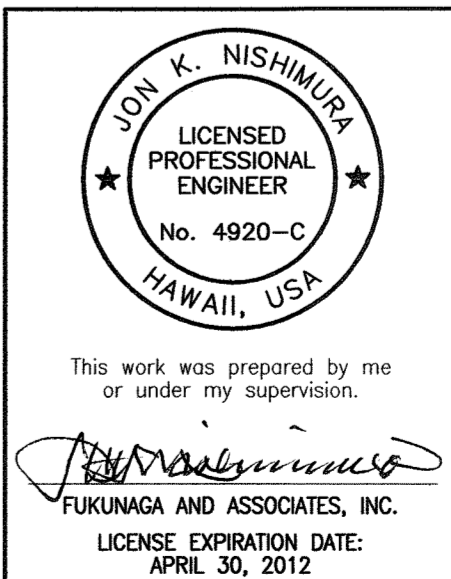
FED. ROAD DIST. NO.	STATE	PROJ. NO.	FISCAL YEAR	SHEET NO.	TOTAL SHEETS
HAWAII	HAW.	HWY-0-03-10M	2011	51	59



SURVEY PLOTTED BY	DATE
DRAWN BY	
TRACED BY	
NOTE BOOK	
QUANTITIES BY	
CHECKED BY	
N.	

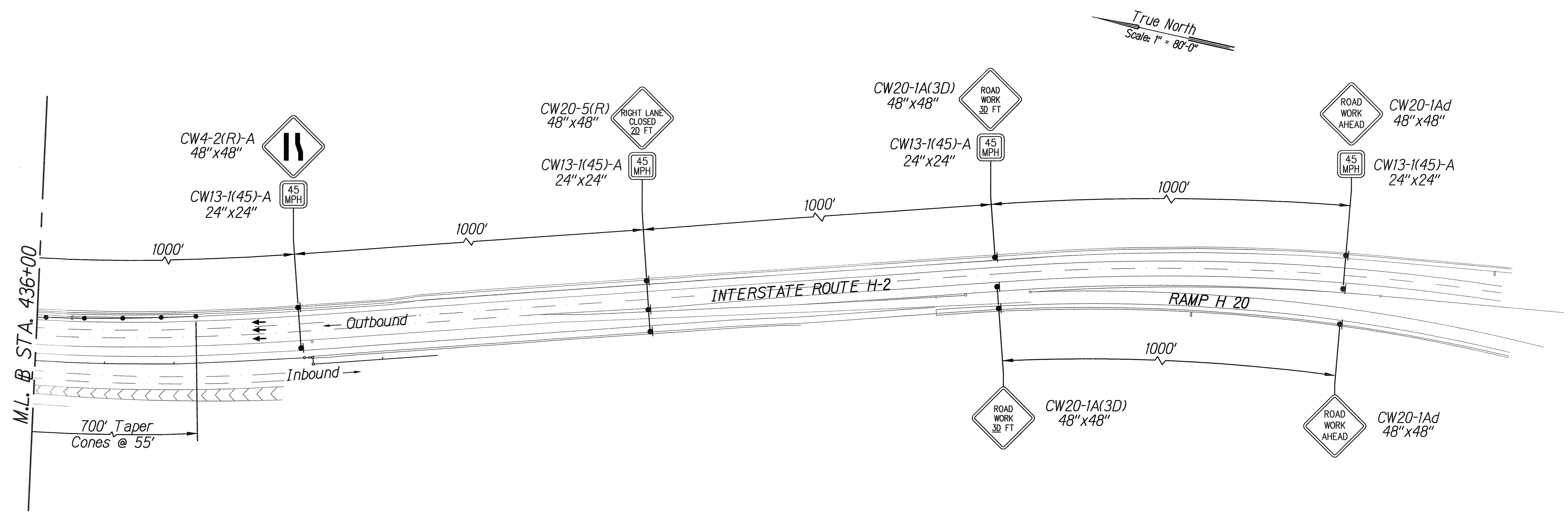
- LEGEND:**
- ▼ Sign
 - Cones or Delineator
 - ↑ Direction of traffic
 - ⚡ Flashing arrow signal
 - ▨ Proposed work area

PHASE - 6 WAIPIO INTERCHANGE TO BL STA. 429+50± (OUTBOUND)
 Scale: 1" = 80'-0"



STATE OF HAWAII
 DEPARTMENT OF TRANSPORTATION
 HIGHWAYS DIVISION
TRAFFIC CONTROL PLAN
PHASE 6 (OUTBOUND)
 Interstate Route H-2
 Freeway Lighting System Reconductoring
 Waiawa Interchange to Leilehua Interchange
 Project No. HWY-0-03-10M
 Scale: 1" = 80'-0" Date: August, 2010
 SHEET No. 7-12 OF 20 SHEETS

FED. ROAD DIST. NO.	STATE	PROJ. NO.	FISCAL YEAR	SHEET NO.	TOTAL SHEETS
HAWAII	HAW.	HWY-O-03-10M	2011	52	59



- LEGEND:**
- ▶ Sign
 - Cones or Delineator
 - ← Direction of traffic
 - ⚡ Flashing arrow signal
 - ▨ Proposed work area

PHASE - 6 WAIPIO INTERCHANGE TO BL STA. 429+50±
(OUTBOUND)
 Scale: 1" = 80'-0"

ORIGINAL PLAN	SURVEY PLOTTED BY	DATE
NOTE BOOK	DRAWN BY	
	DESIGNED BY	
	QUANTITIES BY	
	CHECKED BY	

JOHN K. NISHIMURA
 LICENSED PROFESSIONAL ENGINEER
 No. 4920-C
 HAWAII, USA

This work was prepared by me or under my supervision.

Jon Nishimura
 FUKUNAGA AND ASSOCIATES, INC.
 LICENSE EXPIRATION DATE: APRIL 30, 2012

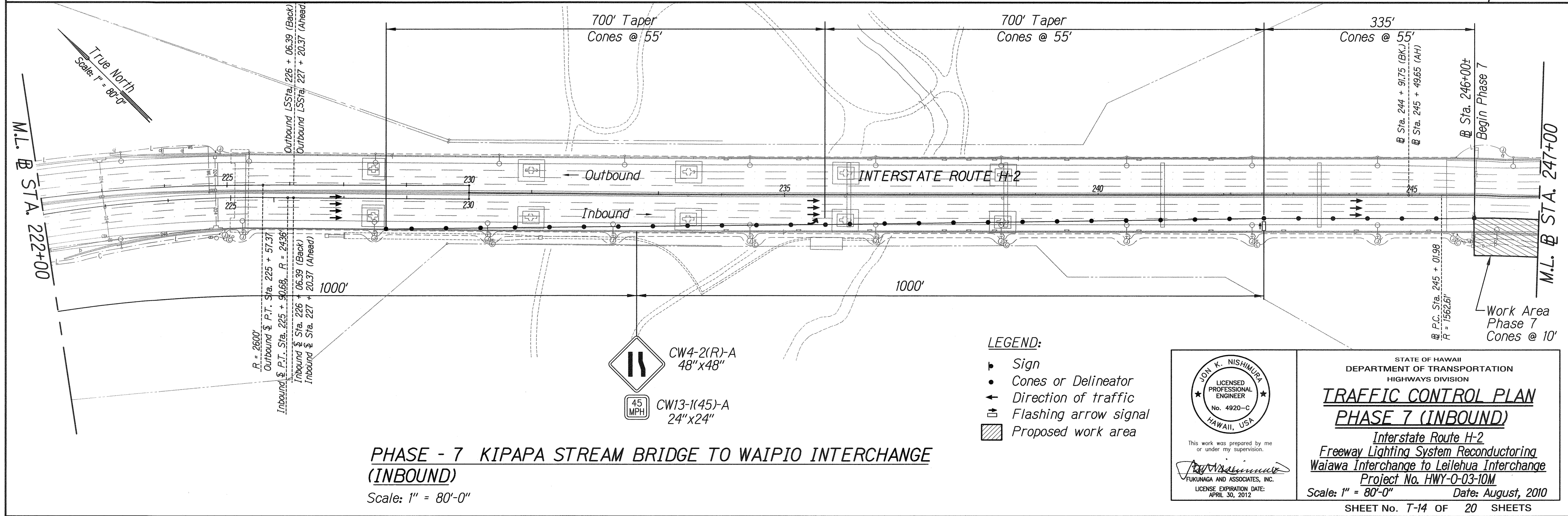
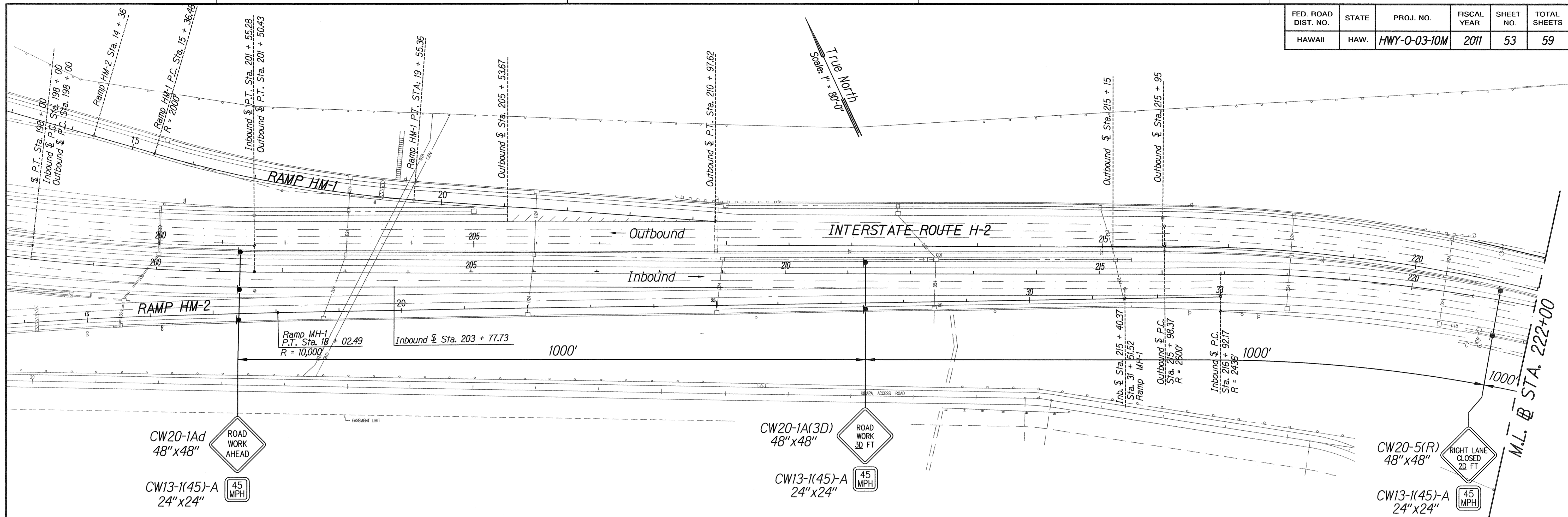
STATE OF HAWAII
 DEPARTMENT OF TRANSPORTATION
 HIGHWAYS DIVISION

TRAFFIC CONTROL PLAN
PHASE 6 (OUTBOUND)

Interstate Route H-2
Freeway Lighting System Reconductoring
Waialua Interchange to Leilehua Interchange
Project No. HWY-O-03-10M
 Scale: 1" = 80'-0" Date: August, 2010

SHEET No. T-13 OF 20 SHEETS

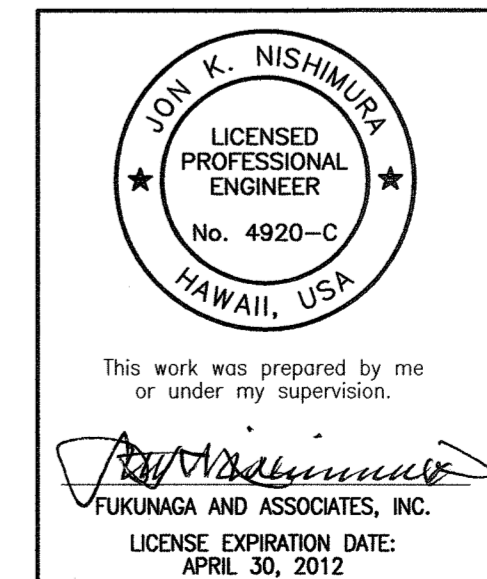
FED. ROAD DIST. NO.	STATE	PROJ. NO.	FISCAL YEAR	SHEET NO.	TOTAL SHEETS
HAWAII	HAW.	HWY-0-03-10M	2011	53	59



SURVEY PLOTTED BY	DATE
DRAWN BY	
TRACED BY	
NOTE BOOK	
QUANTITIES BY	
CHECKED BY	
No.	

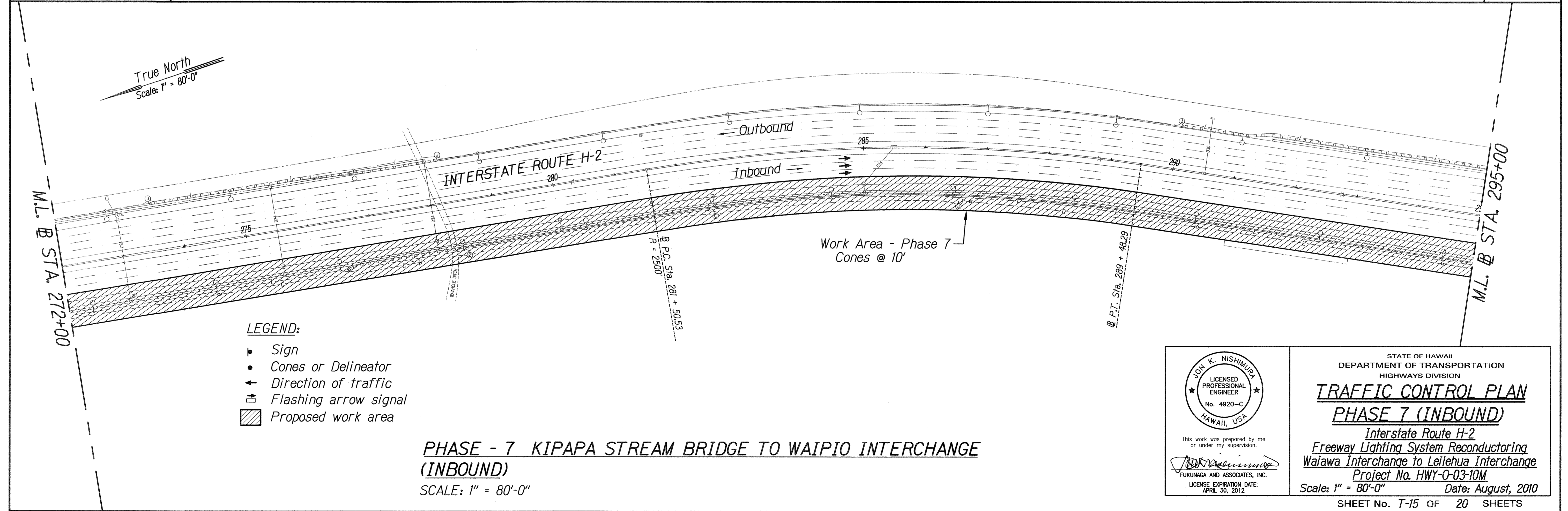
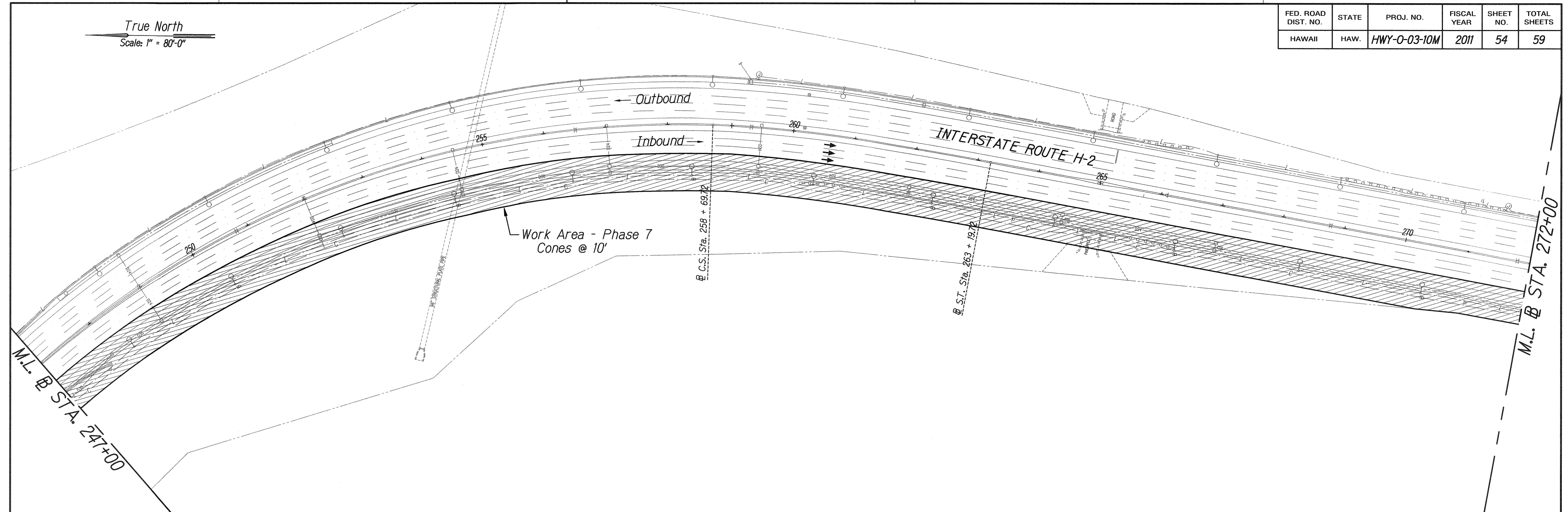
PHASE - 7 KIPAPA STREAM BRIDGE TO WAIPIO INTERCHANGE (INBOUND)
Scale: 1" = 80'-0"

- LEGEND:**
- ▶ Sign
 - Cones or Delineator
 - ← Direction of traffic
 - ⚡ Flashing arrow signal
 - ▨ Proposed work area



STATE OF HAWAII
DEPARTMENT OF TRANSPORTATION
HIGHWAYS DIVISION
TRAFFIC CONTROL PLAN
PHASE 7 (INBOUND)
Interstate Route H-2
Freeway Lighting System Reconductoring
Waiawa Interchange to Leilehua Interchange
Project No. HWY-0-03-10M
Scale: 1" = 80'-0" Date: August, 2010
SHEET No. 7-14 OF 20 SHEETS

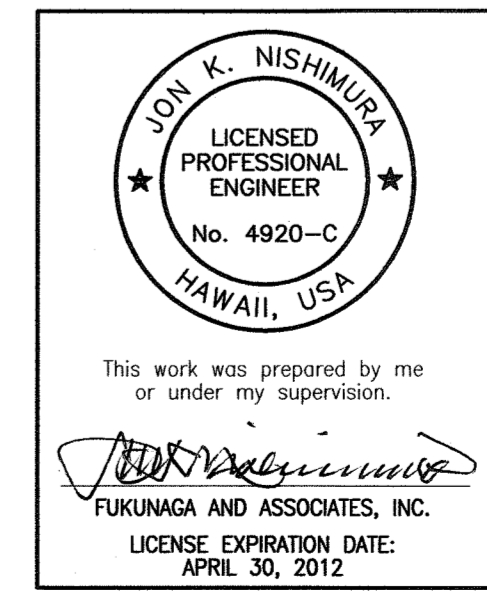
FED. ROAD DIST. NO.	STATE	PROJ. NO.	FISCAL YEAR	SHEET NO.	TOTAL SHEETS
HAWAII	HAW.	HWY-0-03-10M	2011	54	59



- LEGEND:**
- ▴ Sign
 - Cones or Delineator
 - ← Direction of traffic
 - ⚡ Flashing arrow signal
 - ▨ Proposed work area

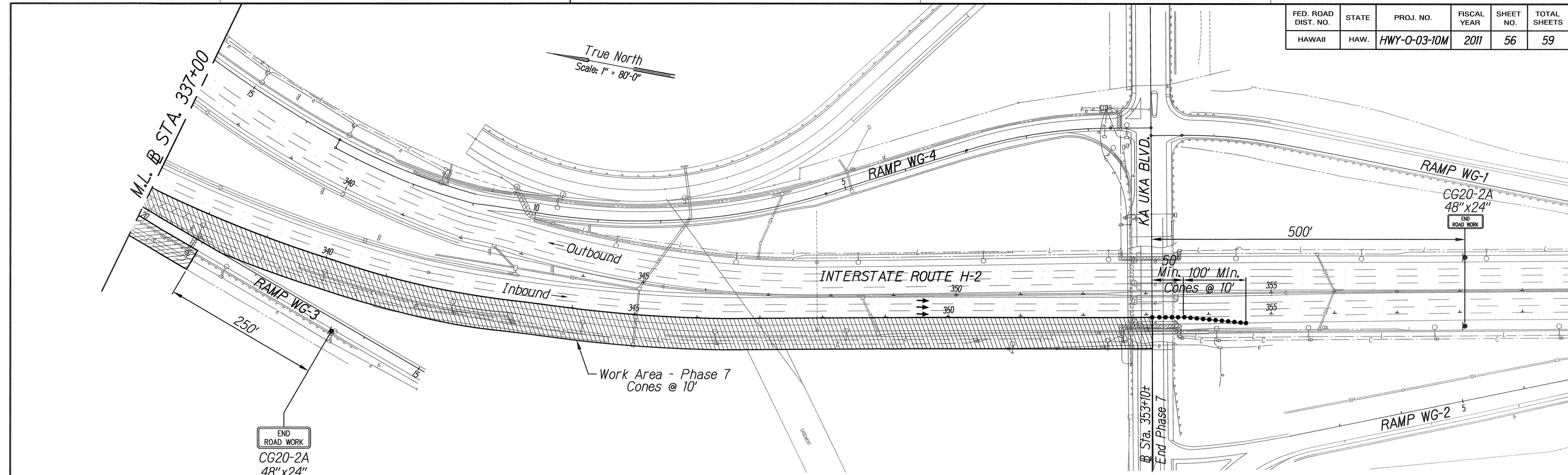
PHASE - 7 KIPAPA STREAM BRIDGE TO WAIPIO INTERCHANGE (INBOUND)
 SCALE: 1" = 80'-0"

SURVEY PLOTTED BY	DATE
DRAWN BY	
TRACED BY	
NOTE BOOK	
QUANTITIES BY	
CHECKED BY	
N.	



STATE OF HAWAII
 DEPARTMENT OF TRANSPORTATION
 HIGHWAYS DIVISION
TRAFFIC CONTROL PLAN
PHASE 7 (INBOUND)
Interstate Route H-2
Freeway Lighting System Reconductoring
Waiawa Interchange to Leilehua Interchange
 Project No. HWY-0-03-10M
 Scale: 1" = 80'-0" Date: August, 2010
 SHEET No. T-15 OF 20 SHEETS

FED. ROAD DIST. NO.	STATE	PROJ. NO.	FISCAL YEAR	SHEET NO.	TOTAL SHEETS
HAWAII	HAW.	HWY-0-03-10M	2011	56	59



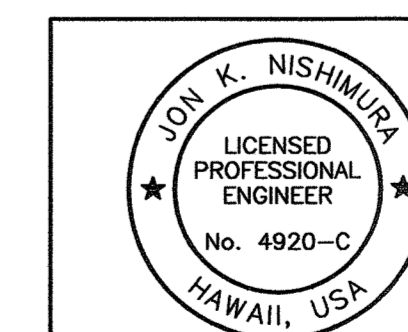
LEGEND:

- Sign
- Cones or Delineator
- ← Direction of traffic
- ⚡ Flashing arrow signal
- ▨ Proposed work area

**PHASE - 7 KIPAPA STREAM BRIDGE TO WAIPIO INTERCHANGE
(INBOUND)**

Scale: 1" = 80'-0"

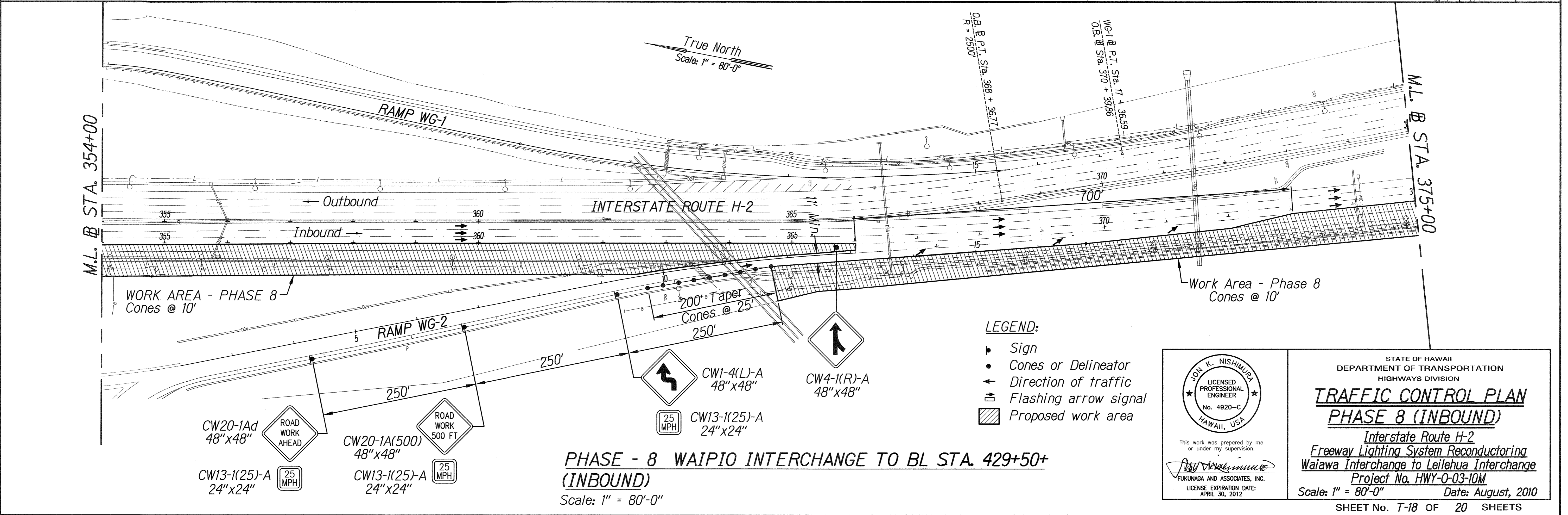
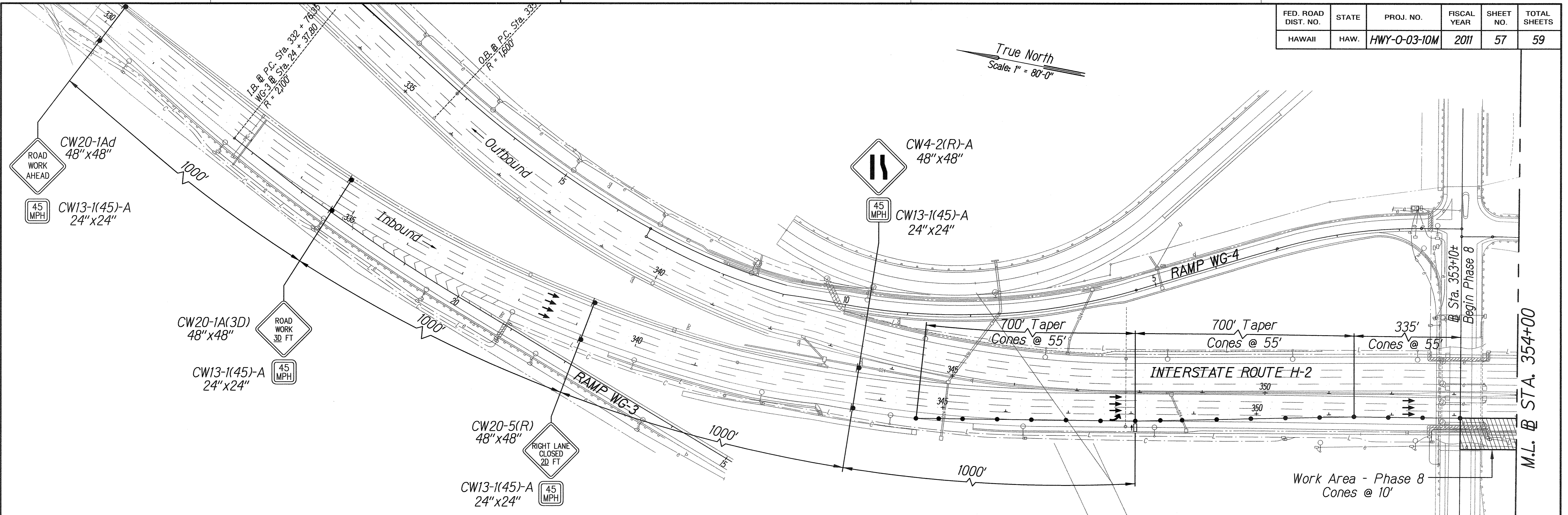
SURVEY PLOTTED BY	DATE
DRAWN BY	
CHECKED BY	
NOTE BOOK	
QUANTITIES BY	
CHECKED BY	
N.	



This work was prepared by me or under my supervision.
 Jon K. Nishimura
 FUKUNAGA AND ASSOCIATES, INC.
 LICENSE EXPIRATION DATE: APRIL 30, 2012

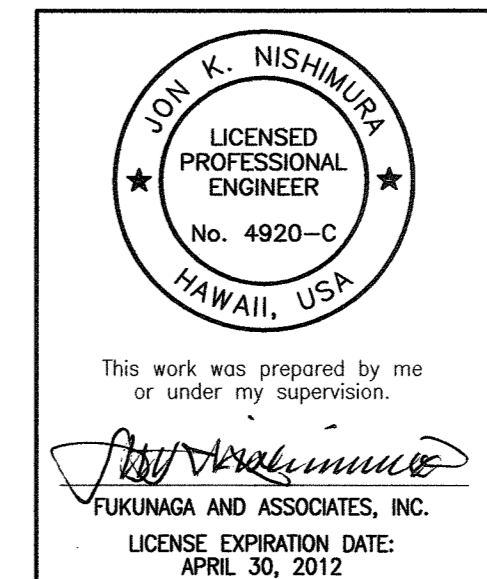
STATE OF HAWAII
 DEPARTMENT OF TRANSPORTATION
 HIGHWAYS DIVISION
TRAFFIC CONTROL PLAN
PHASE 7 (INBOUND)
Interstate Route H-2
Freeway Lighting System Reconductoring
Waiawa Interchange to Leilehua Interchange
 Project No. HWY-0-03-10M
 Scale: 1" = 80'-0" Date: August, 2010

FED. ROAD DIST. NO.	STATE	PROJ. NO.	FISCAL YEAR	SHEET NO.	TOTAL SHEETS
HAWAII	HAW.	HWY-0-03-10M	2011	57	59



PHASE - 8 WAIPIO INTERCHANGE TO BL STA. 429+50+ (INBOUND)
Scale: 1" = 80'-0"

- LEGEND:**
- Sign
 - Cones or Delineator
 - Direction of traffic
 - ⚡ Flashing arrow signal
 - ▨ Proposed work area



STATE OF HAWAII
DEPARTMENT OF TRANSPORTATION
HIGHWAYS DIVISION

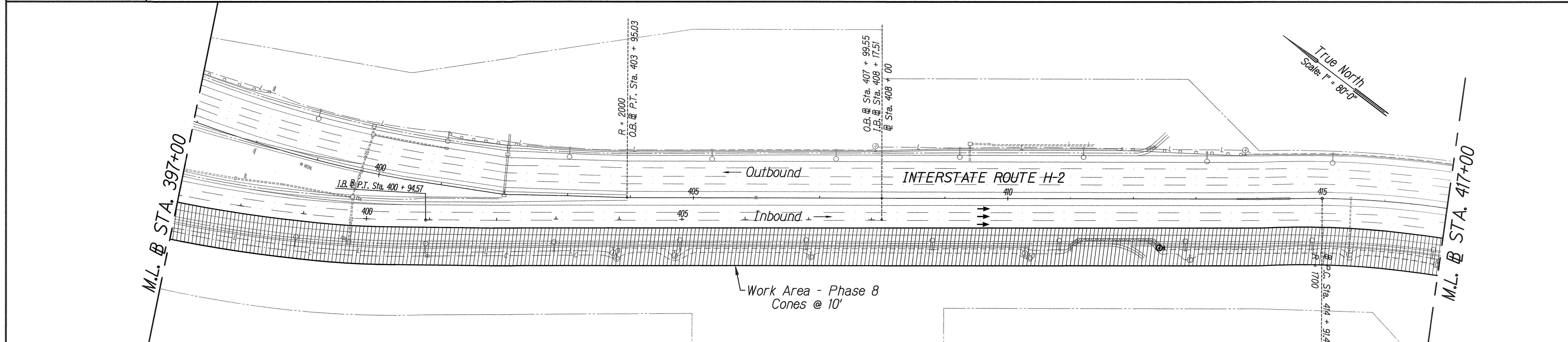
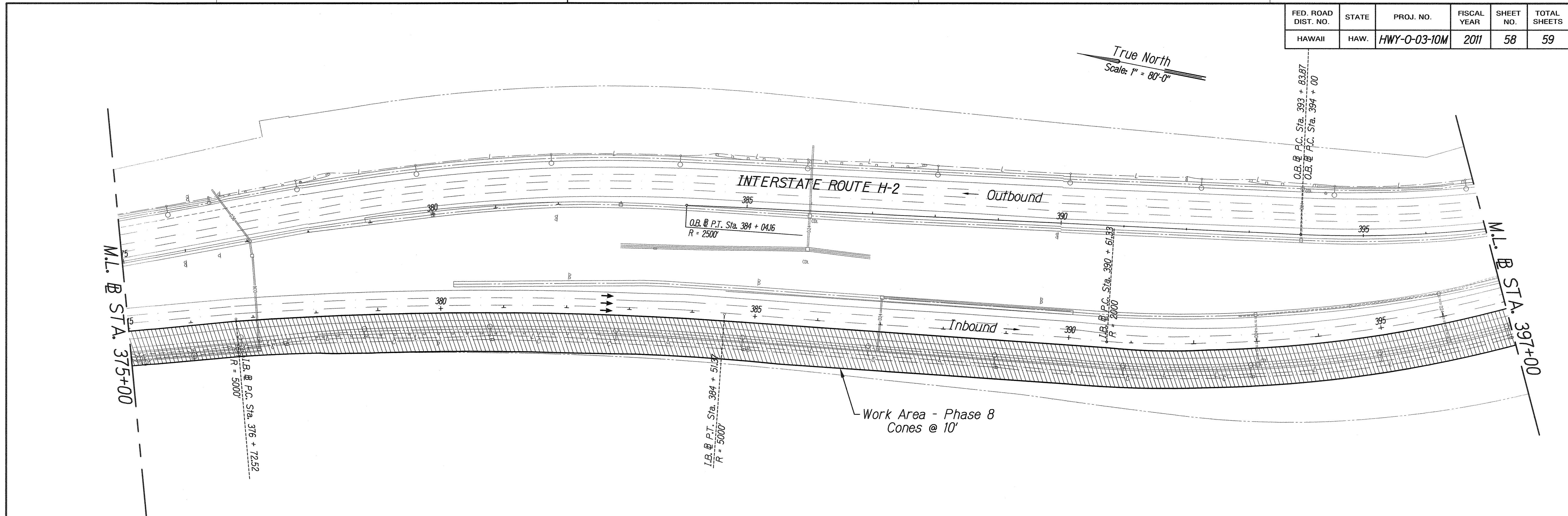
TRAFFIC CONTROL PLAN
PHASE 8 (INBOUND)

Interstate Route H-2
Freeway Lighting System Reconductoring
Waialua Interchange to Leilehua Interchange
Project No. HWY-0-03-10M
Scale: 1" = 80'-0" Date: August, 2010

SHEET No. T-18 OF 20 SHEETS

SURVEY PLOTTED BY	DATE
DRAWN BY	
CHECKED BY	
NOTE BOOK	
QUANTITIES BY	
CHECKED BY	

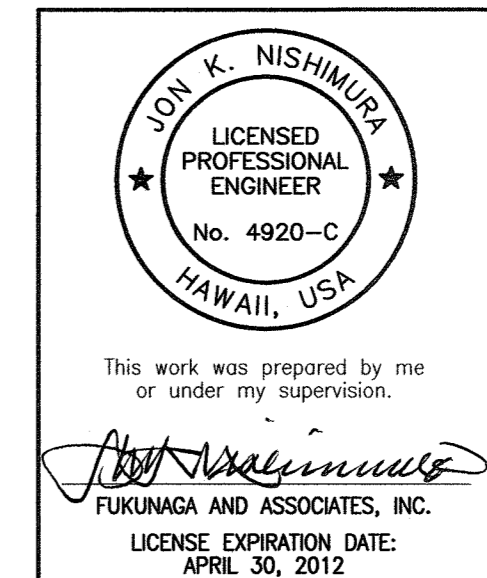
FED. ROAD DIST. NO.	STATE	PROJ. NO.	FISCAL YEAR	SHEET NO.	TOTAL SHEETS
HAWAII	HAW.	HWY-0-03-10M	2011	58	59



- LEGEND:**
- ▴ Sign
 - Cones or Delineator
 - Direction of traffic
 - ⚡ Flashing arrow signal
 - ▨ Proposed work area

PHASE - 8 WAIPIO INTERCHANGE TO BL STA. 429+50± (INBOUND)
 Scale: 1" = 80'-0"

SURVEY PLOTTED BY	DATE
DRAWN BY	
TRACED BY	
NOTE BOOK	
QUANTITIES BY	
CHECKED BY	
No.	



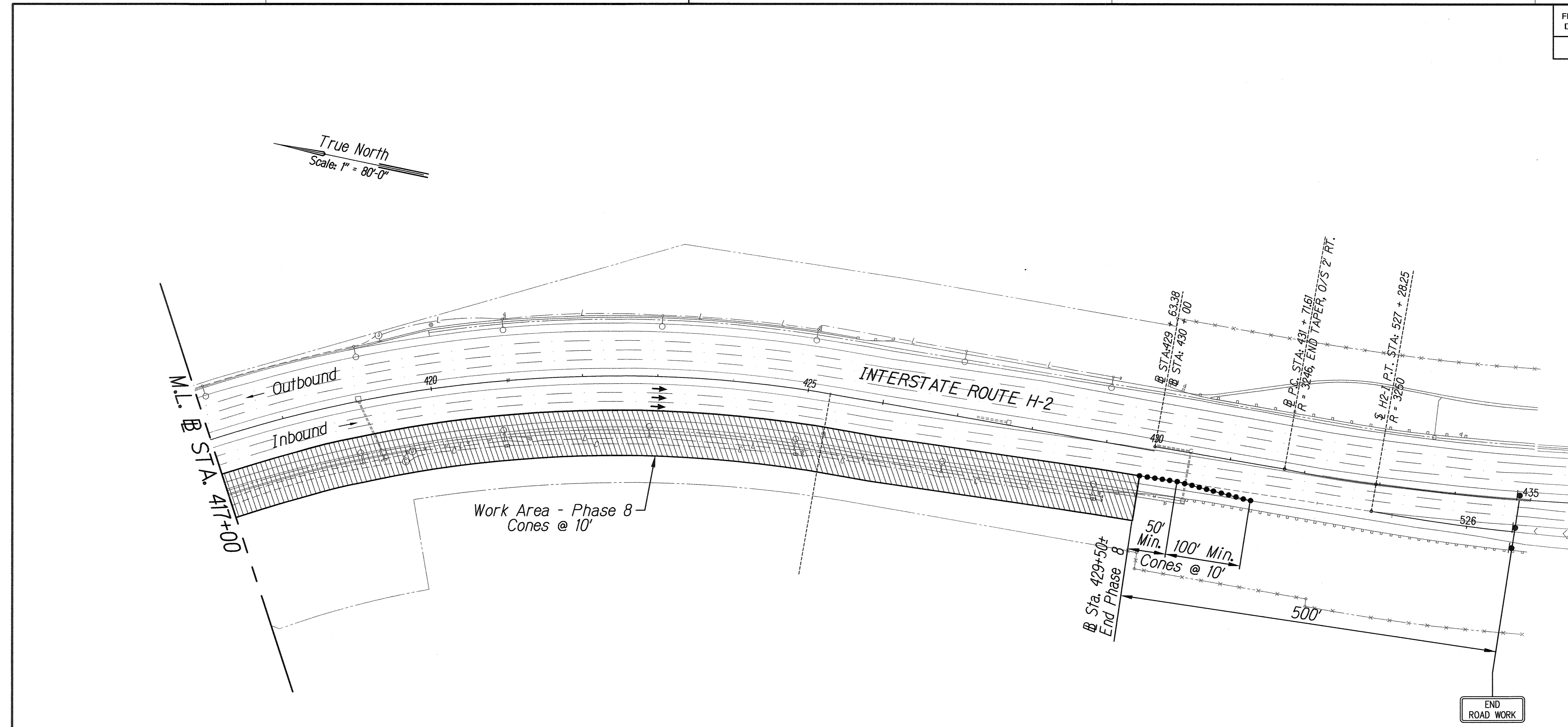
STATE OF HAWAII
 DEPARTMENT OF TRANSPORTATION
 HIGHWAYS DIVISION

TRAFFIC CONTROL PLAN
PHASE 8 (INBOUND)

Interstate Route H-2
 Freeway Lighting System Reconductoring
 Waiawa Interchange to Leilehua Interchange
 Project No. HWY-0-03-10M
 Scale: 1" = 80'-0" Date: August, 2010

SHEET No. 7-19 OF 20 SHEETS

FED. ROAD DIST. NO.	STATE	PROJ. NO.	FISCAL YEAR	SHEET NO.	TOTAL SHEETS
HAWAII	HAW.	HWY-0-03-10M	2011	59	59



- LEGEND:**
- ▴ Sign
 - Cones or Delineator
 - ← Direction of traffic
 - ⚡ Flashing arrow signal
 - ▨ Proposed work area

PHASE - 8 WAIPIO INTERCHANGE TO BL STA. 429+50± (INBOUND)
 Scale: 1" = 80'-0"

SURVEY PLOTTED BY	DATE
DRAWN BY	
DESIGNED BY	
NOTE BOOK	
QUANTITIES BY	
CHECKED BY	
N.	

JOHN K. NISHIMURA
 LICENSED PROFESSIONAL ENGINEER
 No. 4920-C
 HAWAII, USA

This work was prepared by me or under my supervision.

[Signature]
 FUKUNAGA AND ASSOCIATES, INC.
 LICENSE EXPIRATION DATE: APRIL 30, 2012

STATE OF HAWAII
 DEPARTMENT OF TRANSPORTATION
 HIGHWAYS DIVISION

TRAFFIC CONTROL PLAN
PHASE 8 (INBOUND)

Interstate Route H-2
Freeway Lighting System Reconductoring
Waialua Interchange to Leilehua Interchange
Project No. HWY-0-03-10M

Scale: 1" = 80'-0" Date: August, 2010