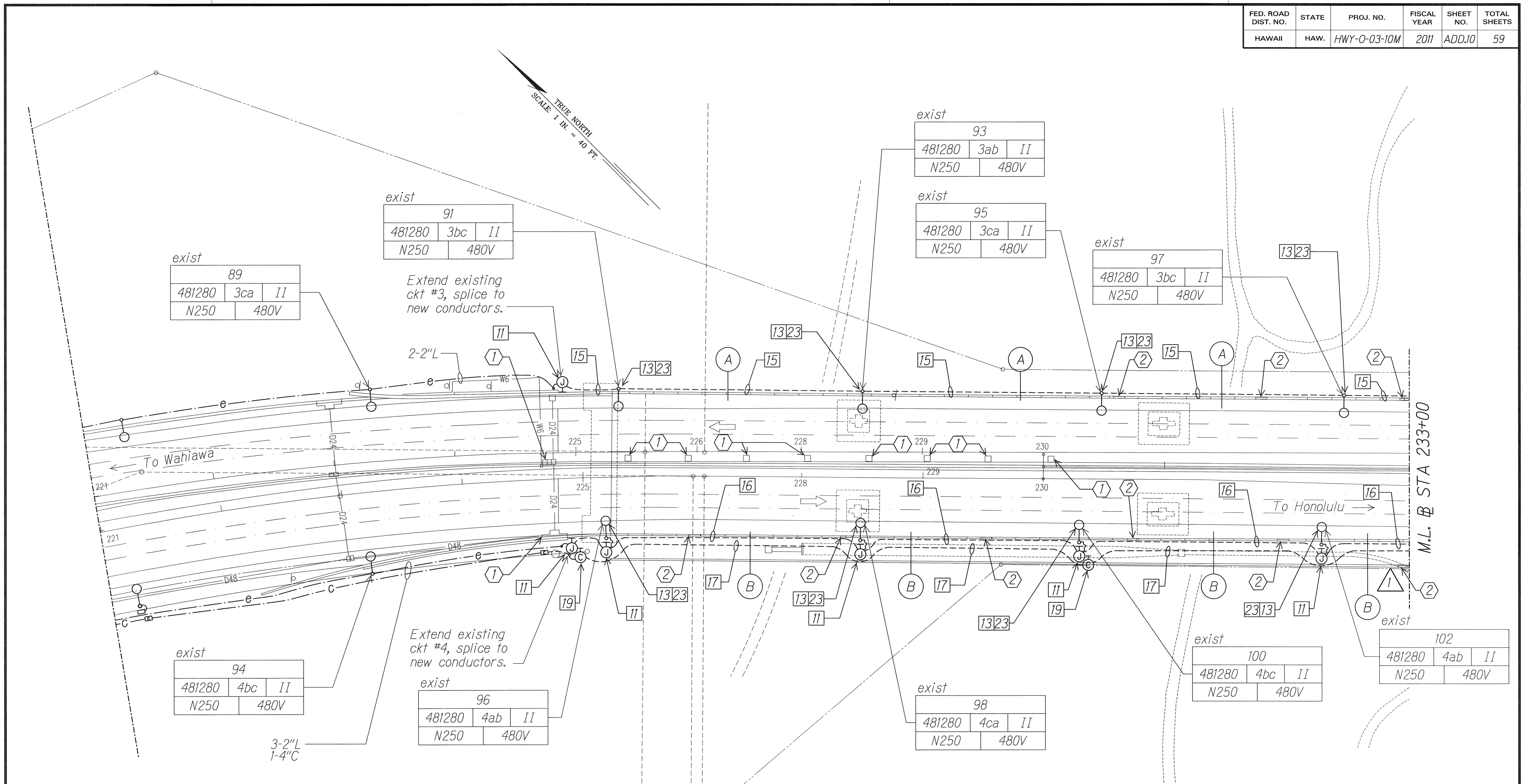


FED. ROAD DIST. NO.	STATE	PROJ. NO.	FISCAL YEAR	SHEET NO.	TOTAL SHEETS
HAWAII	HAW.	HWY-0-03-10M	2011	ADD.10	59



DATE	_____
SURVEY PLOTTED BY	_____
DRAWN BY	_____
CHECKED BY	_____
NOTE BOOK	_____
CHECKED BY	_____

11/23/10	Added Bridge Drain Inlet Protection
DATE	REVISION

RUSSELL A. MORAN  
LICENSED PROFESSIONAL ENGINEER  
No. 9013-E  
HAWAII, U.S.A.  
11/23/10

STATE OF HAWAII  
DEPARTMENT OF TRANSPORTATION  
HIGHWAYS DIVISION

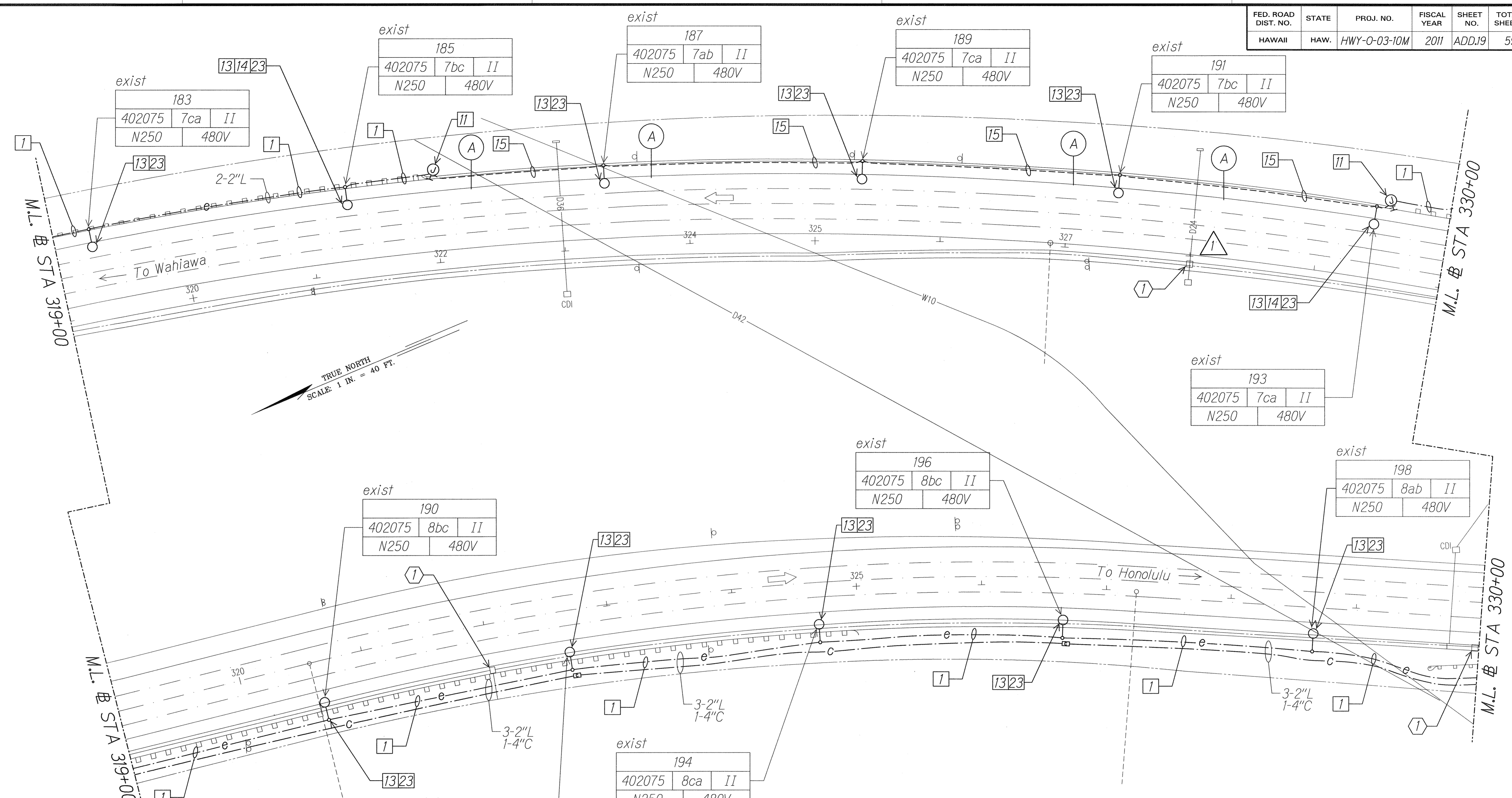
**HIGHWAY LIGHTING PLAN**

**STA 221+00 TO 233+00**

Interstate Route H-2  
Freeway Lighting System Reconductoring  
Waiawa Interchange to Leilehua Interchange  
Project No. HWY-0-03-10M  
Scale: 1" = 40'-0" Date: Aug. 2010

10202-E04-siteB.dgn 11/23/2010 9:47:37 AM

FED. ROAD DIST. NO.	STATE	PROJ. NO.	FISCAL YEAR	SHEET NO.	TOTAL SHEETS
HAWAII	HAW.	HWY-0-03-10M	2011	ADD.19	59



SURVEY PLOTTED BY	DATE
DRAWN BY	
CHECKED BY	
NOTE BOOK	
CHECKED BY	
N.	

11/23/10	Added Grate Drain Inlet Protection
DATE	REVISION

11/23/10

WK ENGINEERS, LTD.  
LICENSE EXPIRATION DATE: 4/30/12  
THIS WORK WAS PREPARED BY ME OR UNDER MY SUPERVISION.

STATE OF HAWAII  
DEPARTMENT OF TRANSPORTATION  
HIGHWAYS DIVISION

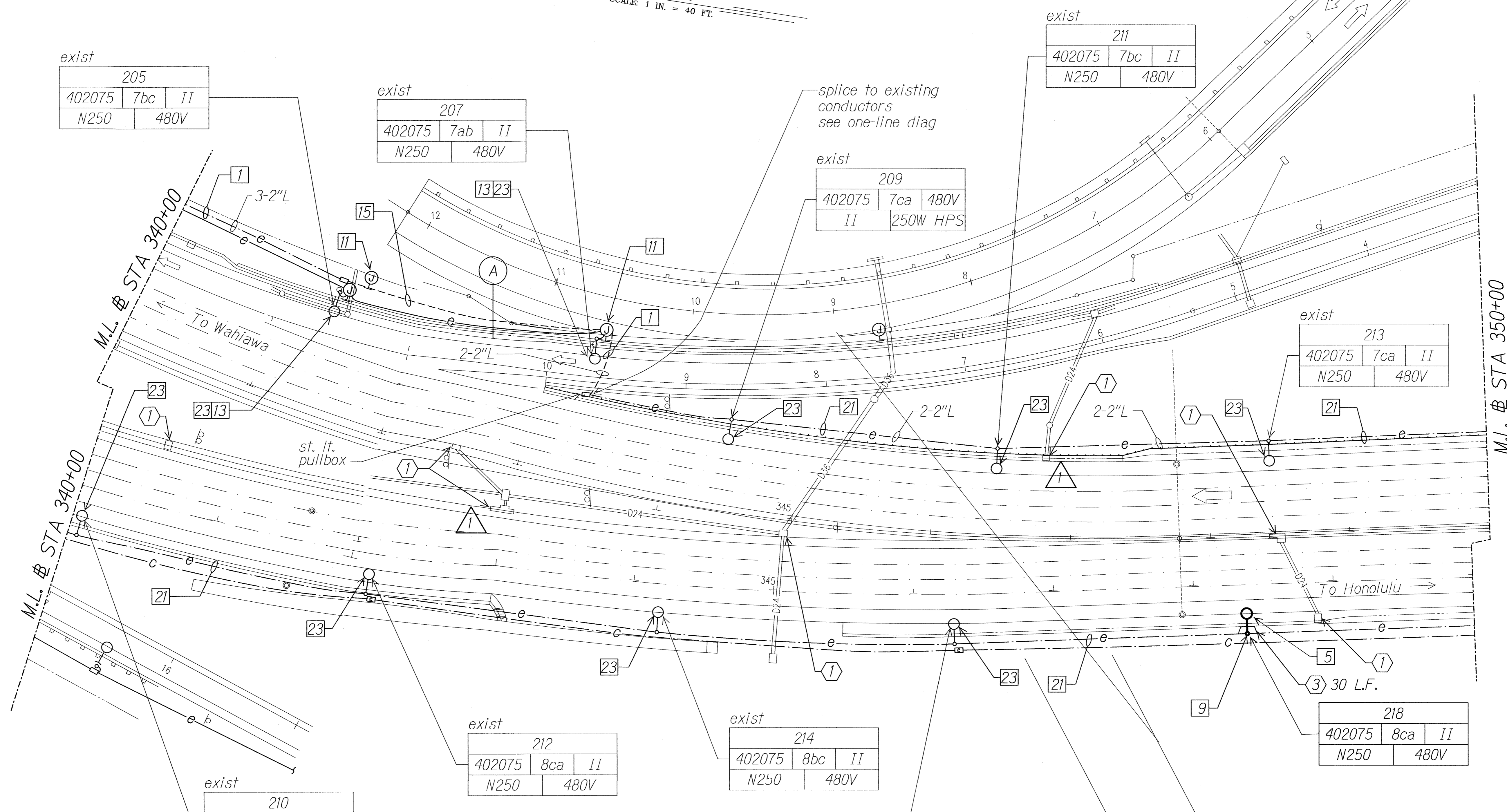
**HIGHWAY LIGHTING PLAN**  
**STA 319+00 TO 330+00**

Interstate Route H-2  
Freeway Lighting System Reconductoring  
Waiawa Interchange to Leilehua Interchange  
Project No. HWY-0-03-10M  
Scale: 1" = 40'-0"      Date: Aug. 2010

10202-E13-stitek.dgn 11/23/2010 9:49:19 AM

FED. ROAD DIST. NO.	STATE	PROJ. NO.	FISCAL YEAR	SHEET NO.	TOTAL SHEETS
HAWAII	HAW.	HWY-0-03-10M	2011	ADD.21	59

TRUE NORTH  
SCALE: 1 IN. = 40 FT.



exist

205
402075 7bc II
N250 480V

exist

207
402075 7ab II
N250 480V

exist

209
402075 7ca 480V
II 250W HPS

exist

211
402075 7bc II
N250 480V

exist

213
402075 7ca II
N250 480V

exist

210
402075 8ab II
N250 480V

exist

212
402075 8ca II
N250 480V

exist

214
402075 8bc II
N250 480V

exist

216
402075 8ab II
N250 480V

exist

218
402075 8ca II
N250 480V

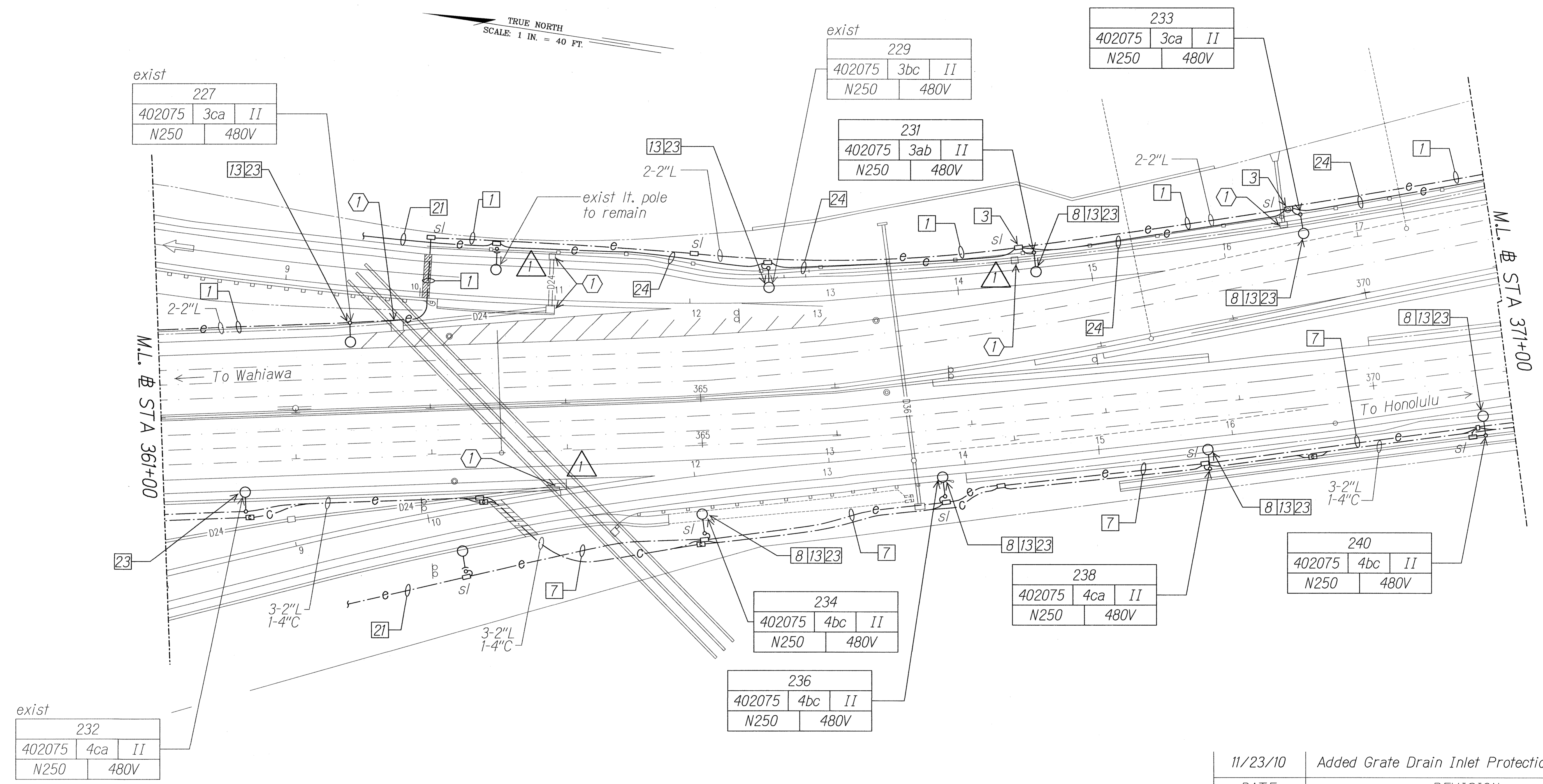
SURVEY PLOTTED BY \_\_\_\_\_ DATE \_\_\_\_\_  
 ORIGINAL PLAN \_\_\_\_\_  
 DRAWN BY \_\_\_\_\_  
 TRACED BY \_\_\_\_\_  
 NOTE BOOK \_\_\_\_\_  
 QUANTITIES BY \_\_\_\_\_  
 CHECKED BY \_\_\_\_\_  
 N. \_\_\_\_\_

11/23/10	Added Grate Drain Inlet Protection
DATE	REVISION
STATE OF HAWAII DEPARTMENT OF TRANSPORTATION HIGHWAYS DIVISION <b>HIGHWAY LIGHTING PLAN</b> <b>STA 340+00 TO 350+00</b> Interstate Route H-2 Freeway Lighting System Reconductoring Waiawa Interchange to Leilehua Interchange Project No. HWY-0-03-10M Scale: 1" = 40'-0" Date: Aug. 2010	
SHEET No. E-15 OF 59 SHEETS	

1020C-E15-siteM.dgn 11/23/2010 12:28:57 PM

FED. ROAD DIST. NO.	STATE	PROJ. NO.	FISCAL YEAR	SHEET NO.	TOTAL SHEETS
HAWAII	HAW.	HWY-0-03-10M	2011	ADD.23	59

TRUE NORTH  
SCALE: 1 IN. = 40 FT.



SURVEY PLOTTED BY	DATE
DRAWN BY	
TRACED BY	
NOTE BOOK	
QUANTITIES BY	
CHECKED BY	
N.	

exist

232		
402075	4ca	II
N250	480V	

11/23/10	Added Grate Drain Inlet Protection
DATE	REVISION

RUSSELL K. MORI  
LICENSED PROFESSIONAL ENGINEER  
No. 9834-E  
HAWAII, U.S.A.

WK ENGINEERS, LTD.  
LICENSE EXPIRATION DATE: 4/30/12  
THIS WORK WAS PREPARED BY ME OR UNDER MY SUPERVISION.

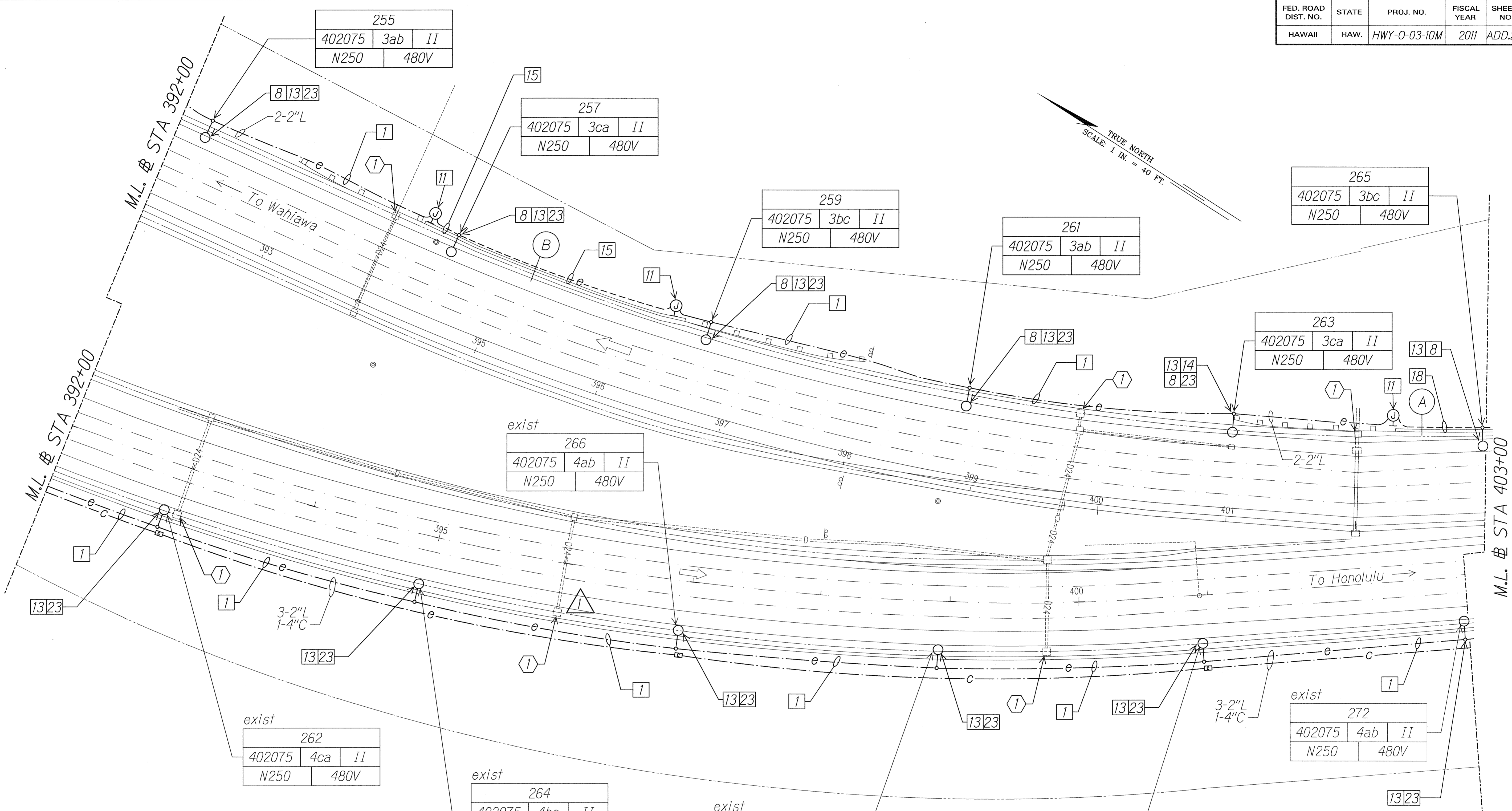
STATE OF HAWAII  
DEPARTMENT OF TRANSPORTATION  
HIGHWAYS DIVISION

**HIGHWAY LIGHTING PLAN**  
**STA 361+00 TO 371+00**

Interstate Route H-2  
Freeway Lighting System Reconductoring  
Waiawa Interchange to Leilehua Interchange  
Project No. HWY-0-03-10M  
Scale: 1" = 40'-0" Date: Aug. 2010

10202-E17-site0.dgn 11/23/2010 12:30:00 PM

FED. ROAD DIST. NO.	STATE	PROJ. NO.	FISCAL YEAR	SHEET NO.	TOTAL SHEETS
HAWAII	HAW.	HWY-0-03-10M	2011	ADD.26	59



DATE	_____
SURVEY PLOTTED BY	_____
DRAWN BY	_____
DESIGNED BY	_____
NOTE BOOK	_____
CHECKED BY	_____
QUANTITIES BY	_____
CHECKED BY	_____

11/23/10	Added Grate Drain Inlet Protection
DATE	REVISION

RUSSELL K. M...  
LICENSED PROFESSIONAL ENGINEER  
No. 9013-E  
HAWAII, U.S.A.  
11/23/10

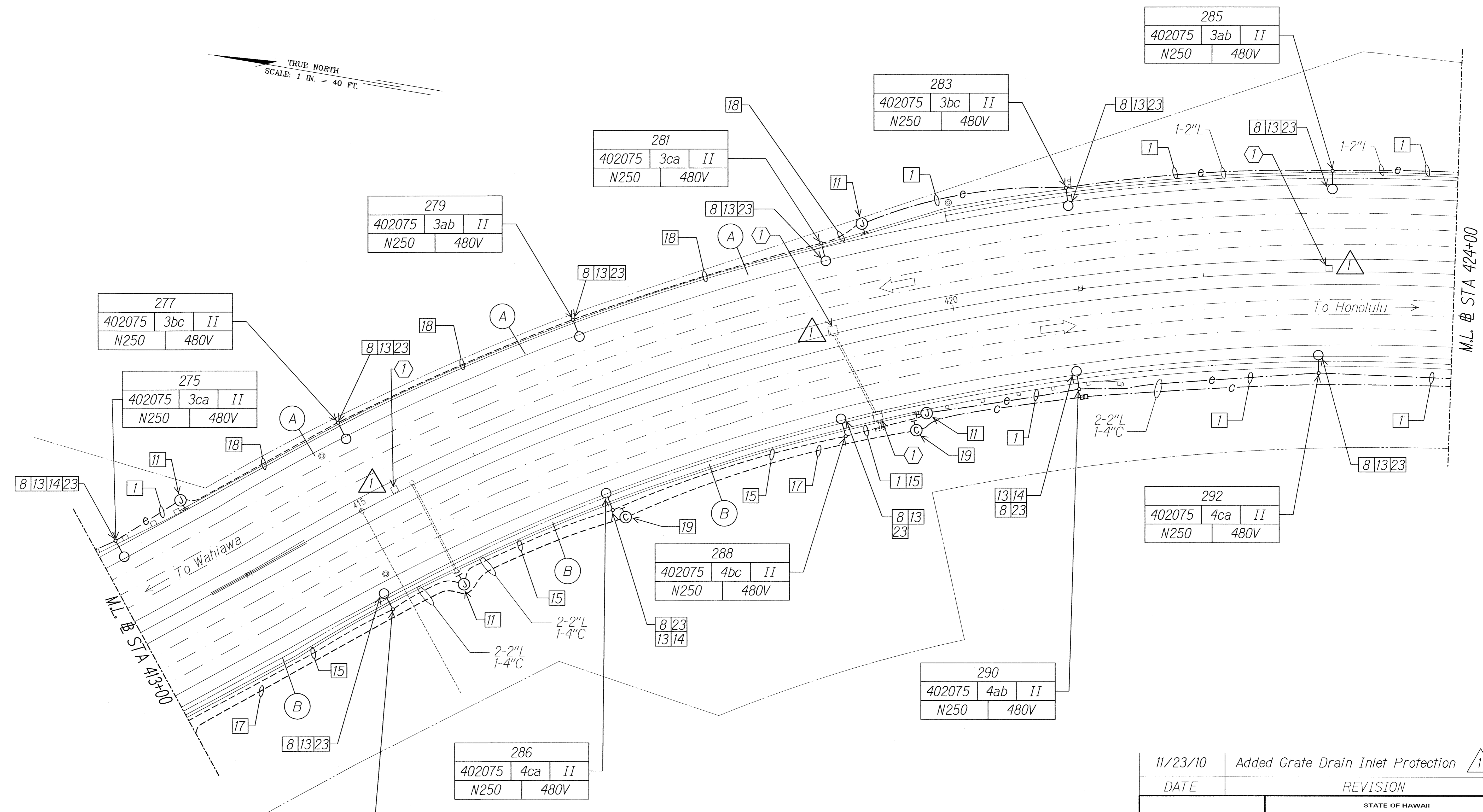
STATE OF HAWAII  
DEPARTMENT OF TRANSPORTATION  
HIGHWAYS DIVISION

**HIGHWAY LIGHTING PLAN**  
**STA 392+00 TO 403+00**

Interstate Route H-2  
Freeway Lighting System Reconductoring  
Waiawa Interchange to Leilehua Interchange  
Project No. HWY-0-03-10M  
Scale: 1" = 40'-0" Date: Aug. 2010

FED. ROAD DIST. NO.	STATE	PROJ. NO.	FISCAL YEAR	SHEET NO.	TOTAL SHEETS
HAWAII	HAW.	HWY-0-03-10M	2011	ADD.28	59

TRUE NORTH  
SCALE: 1 IN. = 40 FT.



277
402075 3bc II
N250 480V

275
402075 3ca II
N250 480V

279
402075 3ab II
N250 480V

281
402075 3ca II
N250 480V

283
402075 3bc II
N250 480V

285
402075 3ab II
N250 480V

292
402075 4ca II
N250 480V

288
402075 4bc II
N250 480V

290
402075 4ab II
N250 480V

286
402075 4ca II
N250 480V

284
402075 4ab II
N250 480V

SURVEY PLOTTED BY	DATE
DRAWN BY	
DESIGNED BY	
QUANTITIES BY	
CHECKED BY	
ORIGINAL PLAN	
NOTE BOOK	
N.	

11/23/10	Added Grate Drain Inlet Protection
DATE	REVISION

RUSSELL M. MOORE  
LICENSED PROFESSIONAL ENGINEER  
No. 9013-E  
HAWAII, U.S.A.

STATE OF HAWAII  
DEPARTMENT OF TRANSPORTATION  
HIGHWAYS DIVISION

**HIGHWAY LIGHTING PLAN**  
**STA 413+00 TO 424+00**

Interstate Route H-2  
Freeway Lighting System Reconductoring  
Waiawa Interchange to Leilehua Interchange  
Project No. HWY-0-03-10M  
Scale: 1" = 40'-0" Date: Aug. 2010

10202-E22-site1.dgn 11/23/2010 12:31:18 PM