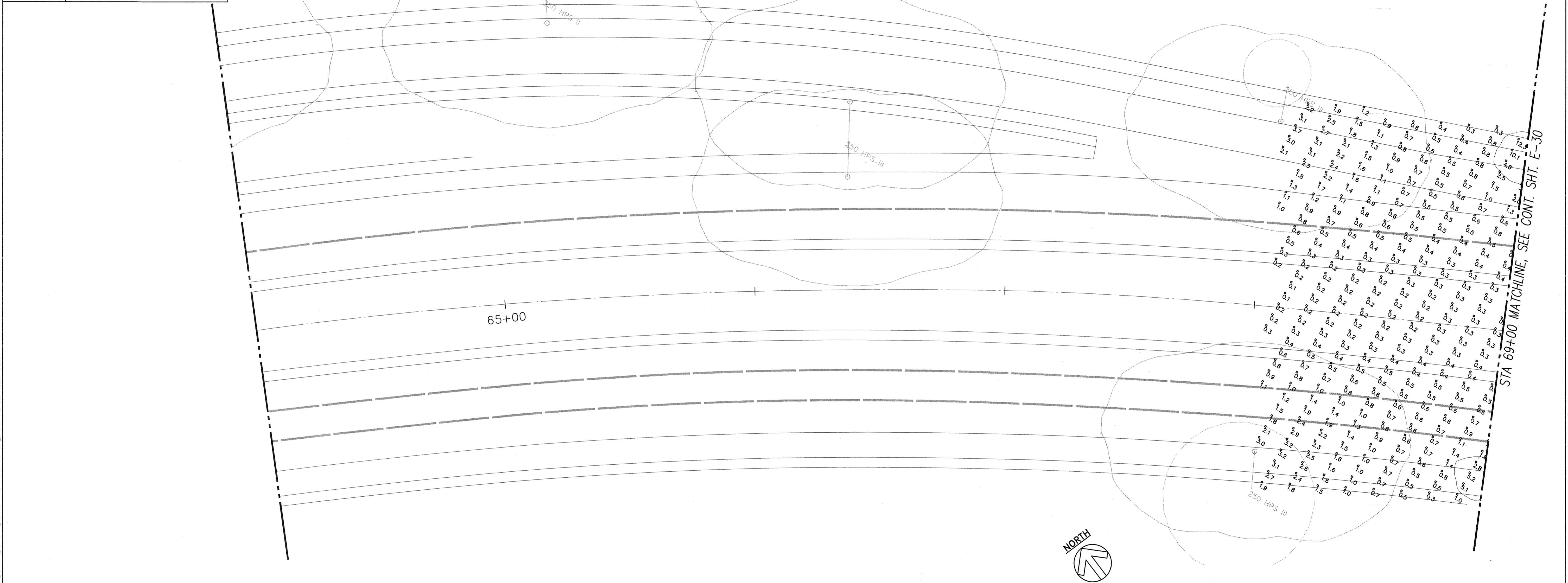
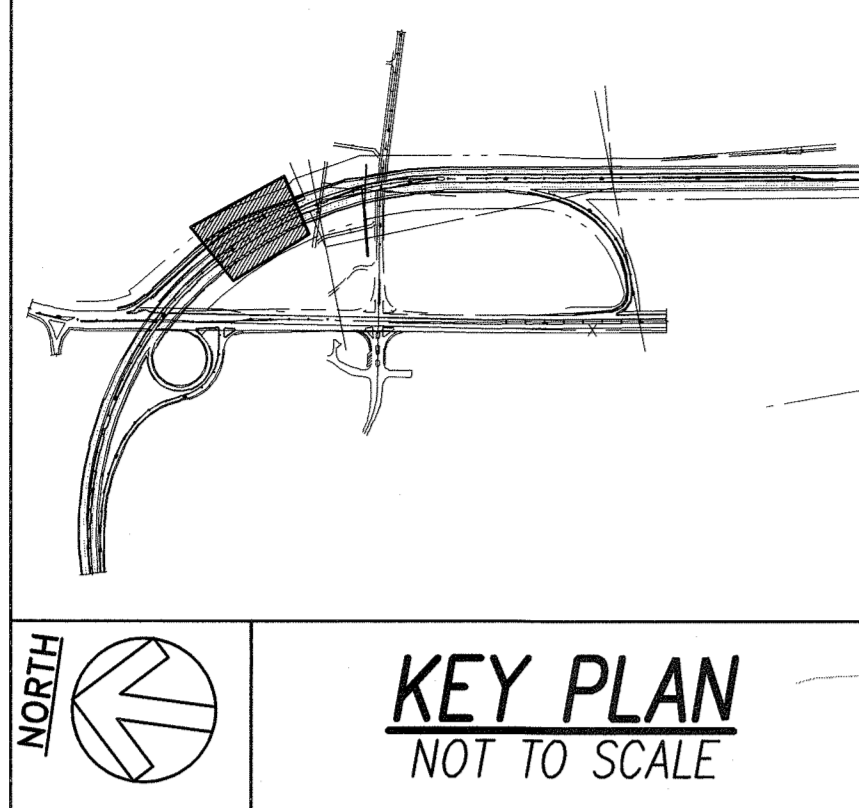


FED. ROAD DIST. NO.	STATE	PROJ. NO.	FISCAL YEAR	SHEET NO.	TOTAL SHEETS
HAWAII	HAW.	HWY-0-03-05MR	2008	30	38



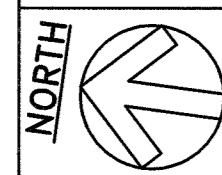
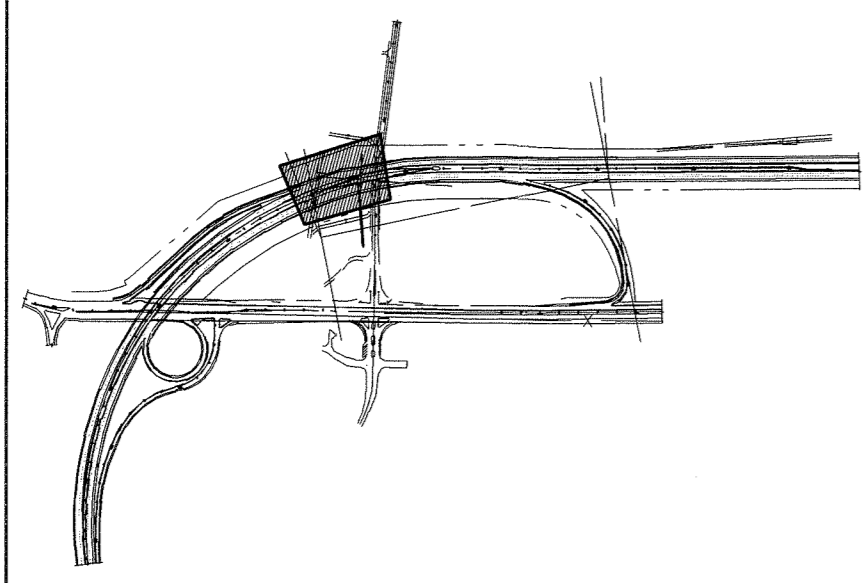
**PARTIAL HIGHWAY ILLUMINATION CALCULATION POINTS PLAN I**  
SCALE: 1"=20'

ORIGINAL PLAN	DATE
SURVEY PLOTTED BY	
DRAWN BY	
TRACED BY	
DESIGNED BY	
QUANTIFIED BY	
CHECKED BY	

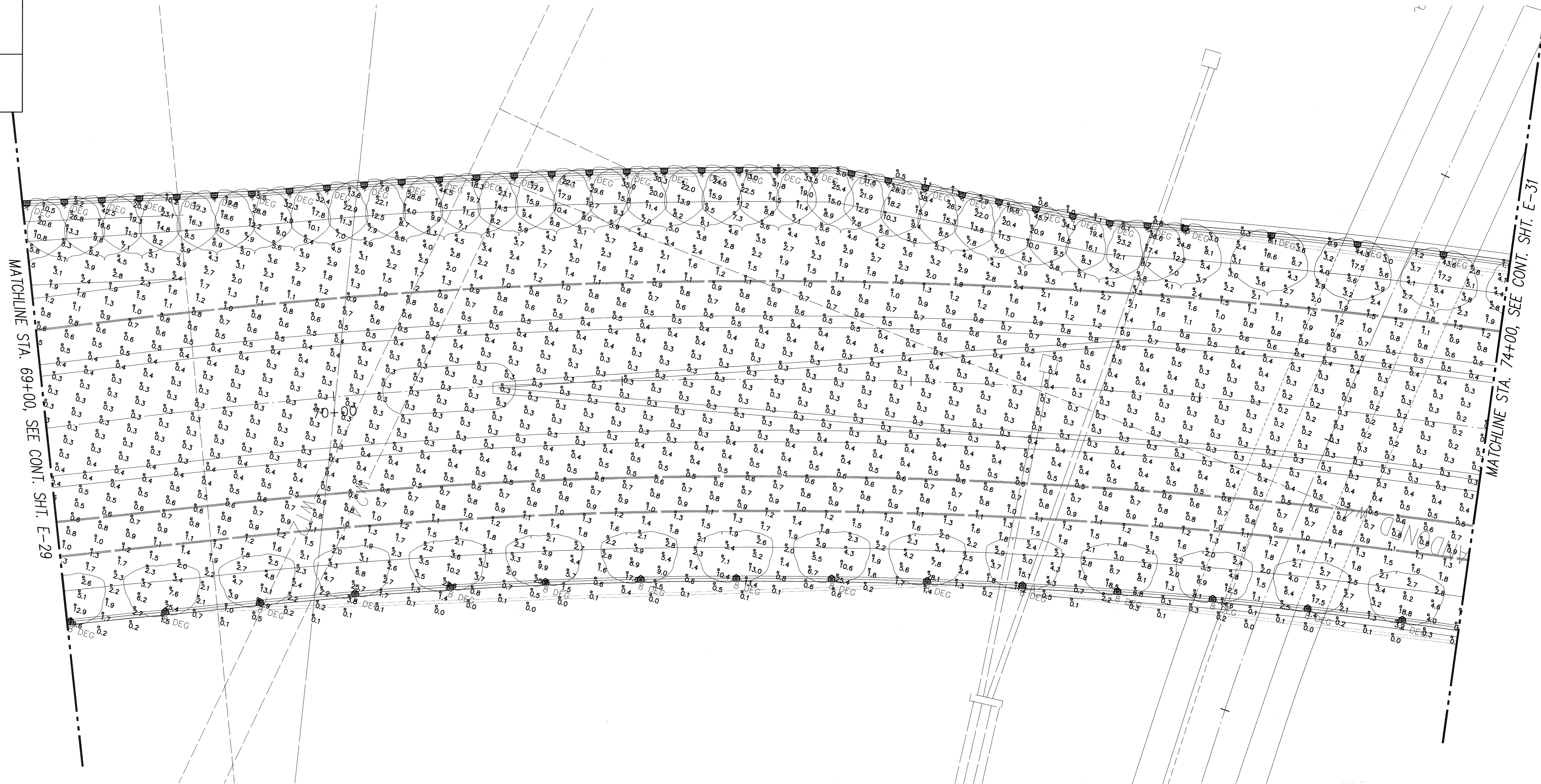
LAST SAVE: 05/21/08 @ 10:02:30 BY: AM PLOT SC 1-20  
Z:\CAD\PROJECTS\24058A\020\_24058A\_roadway\_illumination.dwg Plot 1 XREFS: 012-REV2 \_24058A\_VETPLAN \_24058A-WAHIWATERCHANGE \_24058A-ALL-ELEC-LUM-CALC

RONALD N. S. HO & ASSOCIATES, INC. Electrical Engineers  Andrew I. Miyasato 05.22.08 THIS WORK WAS PREPARED BY ME OR UNDER MY SUPERVISION 04.30.2008 EXPIRATION DATE OF THE LICENSE	STATE OF HAWAII DEPARTMENT OF TRANSPORTATION HIGHWAYS DIVISION <b>PARTIAL HIGHWAY ILLUMINATION          CALCULATION POINTS PLAN I</b> H-2 RAIL LIGHT REPLACEMENT, VICINITY OF WAHIWA OFF RAMP
	Project No. HWY-0-03-05MR Scale: AS NOTED Date: MAY 2008
	SHEET No. E-29 OF 35 SHEETS
	<b>30</b>

FED. ROAD DIST. NO.	STATE	PROJ. NO.	FISCAL YEAR	SHEET NO.	TOTAL SHEETS
HAWAII	HAW.	HWY-0-03-05MR	2008	31	38



**KEY PLAN**  
NOT TO SCALE



MATCHLINE STA. 69+00, SEE CONT. SHT. E-29

MATCHLINE STA. 74+00, SEE CONT. SHT. E-31

**PARTIAL HIGHWAY ILLUMINATION CALCULATION POINTS PLAN II**  
SCALE: 1"=20'



DATE	BY

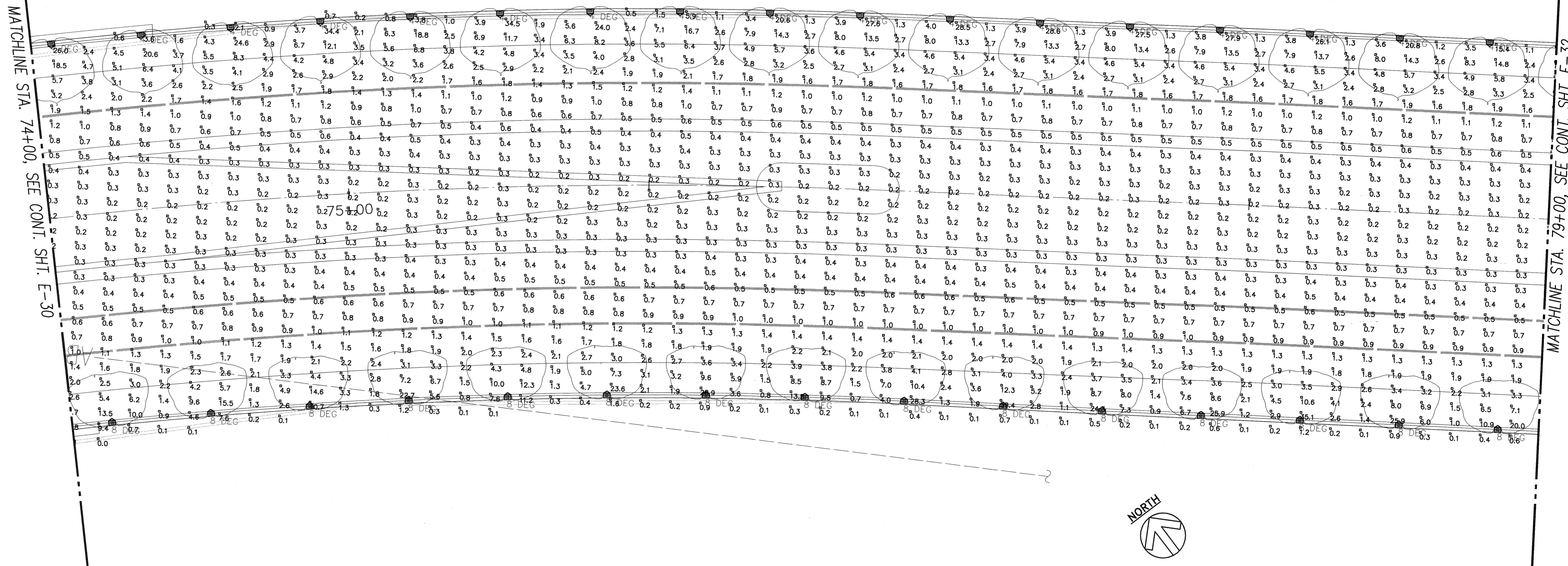
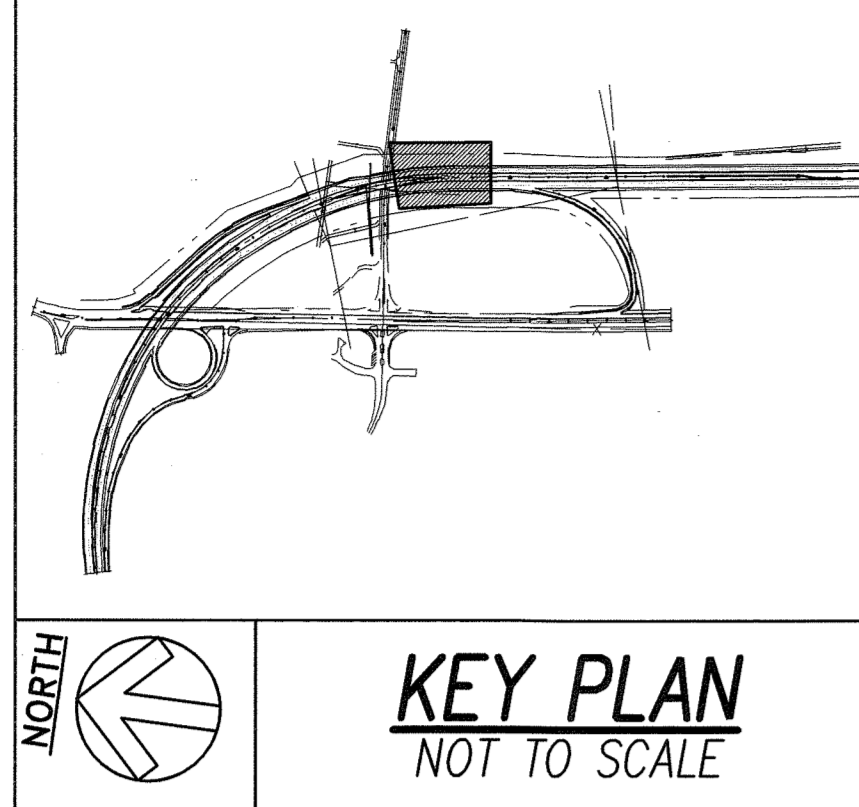
ORIGINAL PLAN CHECKED BY: \_\_\_\_\_  
 SURVEY PLOTTED BY: \_\_\_\_\_  
 TRACKED BY: \_\_\_\_\_  
 DESIGNED BY: \_\_\_\_\_  
 QUANTITIES BY: \_\_\_\_\_  
 CHECKED BY: \_\_\_\_\_

LAST SAVE: 05/21/08 @ 13:06:18 BY: AM PLT SC 1-20  
 Z:\CAD\PROJECTS\24056A\03\_24056A\03\_24056A\_roadway illumination level Plan II REFS: MIE-REV2\_X24056A\_JCTPLAN\_X24056A-WHAWATERCHANGE\_24056A-ALL-ELC-ILLUM-CALS

RONALD N. S. HO & ASSOCIATES, INC.  
 Electrical Engineers  
  
 Andrew I. Miyasato  
 THIS WORK WAS PREPARED BY ME OR UNDER MY SUPERVISION  
 04.30.2008  
 EXPIRATION DATE OF THE LICENSE

STATE OF HAWAII  
 DEPARTMENT OF TRANSPORTATION  
 HIGHWAYS DIVISION  
**PARTIAL HIGHWAY ILLUMINATION CALCULATIONS POINTS II**  
 H-2 RAIL LIGHT REPLACEMENT,  
 VICINITY OF WAHIAWA OFF RAMP  
 Project No. HWY-0-03-05MR  
 Scale: AS NOTED Date: MAY 2008  
 SHEET No. E-30 OF 35 SHEETS

FED. ROAD DIST. NO.	STATE	PROJ. NO.	FISCAL YEAR	SHEET NO.	TOTAL SHEETS
HAWAII	HAW.	HWY-0-03-05MR	2008	32	38



ORIGINAL PLAN	DATE
SURVEY PLOTTED BY	
DRAWN BY	
TRACED BY	
DESIGNED BY	
QUANTITIES BY	
CHECKED BY	
No.	

LAST SAVE: 05/21/08 @ 15:07:59 BY: AM PLOT SC 1-20  
 Z:\ASAP\PROJECTS\24056A\WST\_24056A\_roadway illumination final plan III WEP5: XIP-REV7\_24056A\_UC1PLAN\_24056A-WHAWAINTERCHANGE\_24056A-ALL-ELEC-ILLUM-CALC

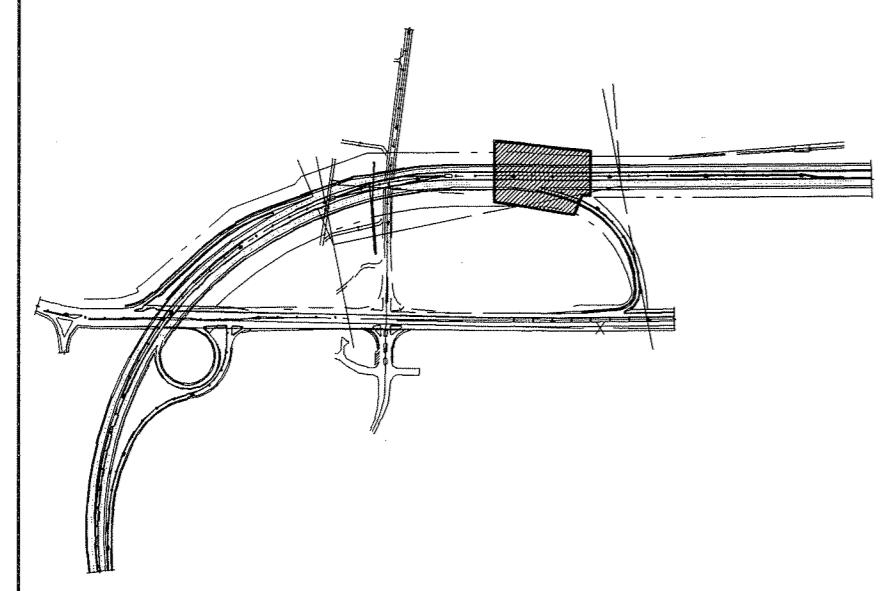
**PARTIAL HIGHWAY ILLUMINATION CALCULATION POINTS PLAN III**  
 SCALE: 1"=20'



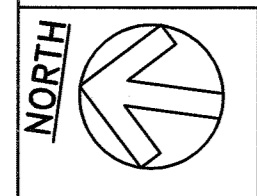
RONALD N. S. HO & ASSOCIATES, INC.  
 Electrical Engineers  
  
 Andrew L. Miyazaki  
 THIS WORK WAS PREPARED BY ME OR UNDER MY SUPERVISION  
 04.30.2008  
 EXPIRATION DATE OF THE LICENSE

STATE OF HAWAII  
 DEPARTMENT OF TRANSPORTATION  
 HIGHWAYS DIVISION  
**PARTIAL HIGHWAY ILLUMINATION  
 CALCULATION POINTS PLAN III**  
 H-2 RAIL LIGHT REPLACEMENT,  
 VICINITY OF WAHIAWA OFF RAMP  
 Project No. HWY-0-03-05MR  
 Scale: AS NOTED Date: MAY 2008  
 SHEET No. E-31 OF 35 SHEETS

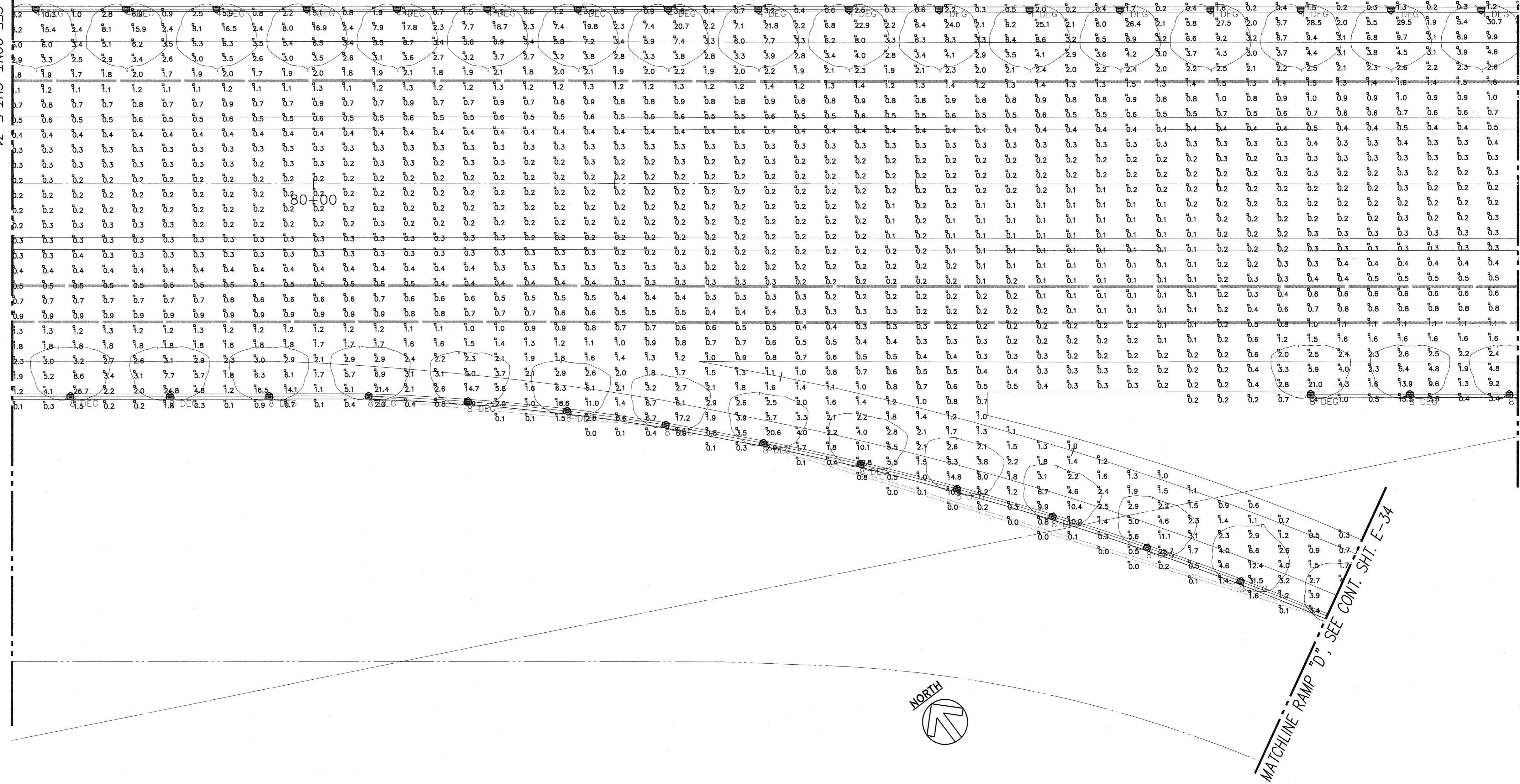
FED. ROAD DIST. NO.	STATE	PROJ. NO.	FISCAL YEAR	SHEET NO.	TOTAL SHEETS
HAWAII	HAW.	HWY-0-03-05MR	2008	33	38



**KEY PLAN**  
NOT TO SCALE



MATCHLINE STA. 79+00, SEE CONT. SHT. E-31

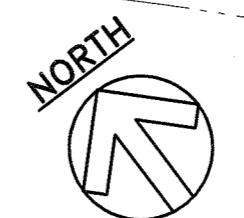


MATCHLINE STA. 84+00, SEE CONT. SHT. E-33

SURVEY PLOTTED BY	DATE
DRAWN BY	
TRACED BY	
DESIGNED BY	
QUANTITIES BY	
CHECKED BY	
No.	

LAST SAVE: 05/21/08 @ 13:08:59 BY: AM PL07 SC: 1-20  
Z:\CAD\PROJECTS\24056A\032\_24056A roadway illumination level Plan IV XREFS: X12-REVZ\_24056A\_CPT PLAN\_24056A-ALL-ELC-LUM-CALCS

**PARTIAL HIGHWAY ILLUMINATION CALCULATION POINTS PLAN IV**  
SCALE: 1"=20'

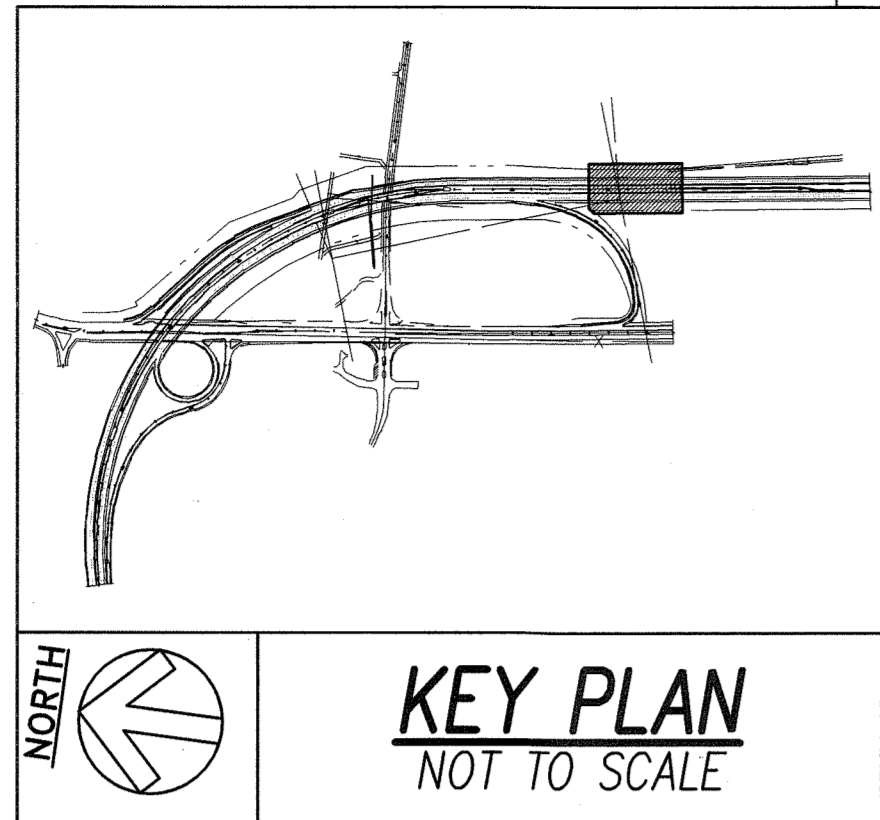


MATCHLINE RAMP "D", SEE CONT. SHT. E-34

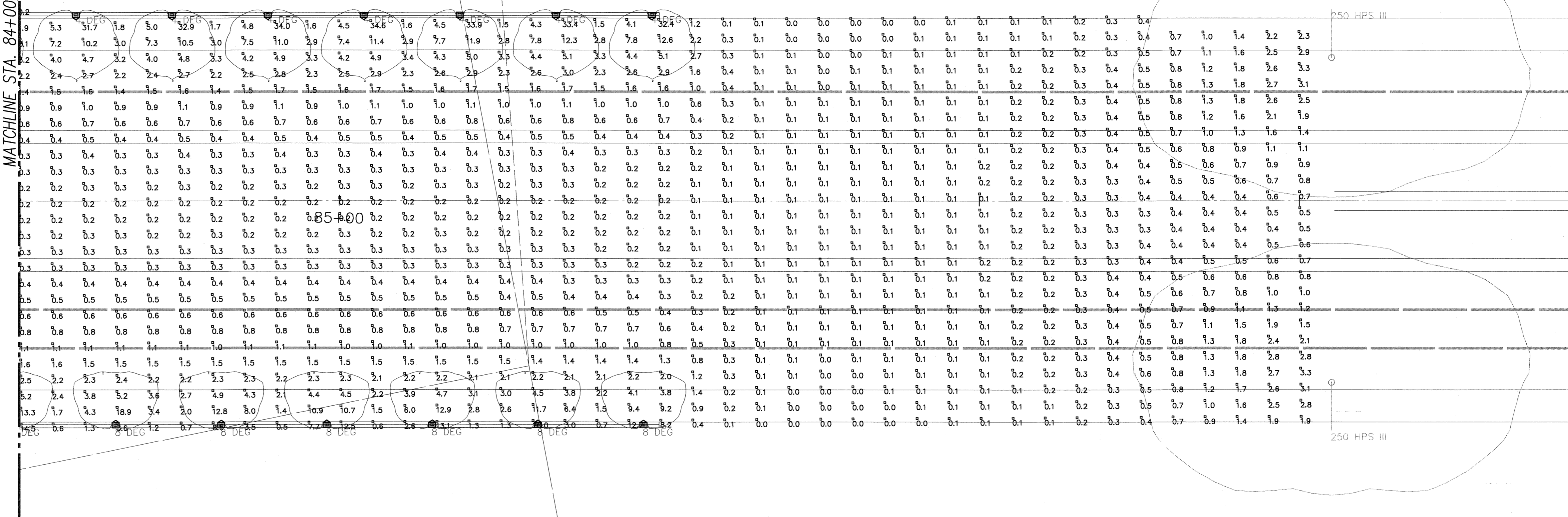
RONALD N. S. HO & ASSOCIATES, INC.  
Electrical Engineers  
**ANDREW I. MIYASATO**  
LICENSED PROFESSIONAL ENGINEER  
No. 4340-E  
HAWAII, U.S.A.  
*05.22.08*  
THIS WORK WAS PREPARED BY ME OR UNDER MY SUPERVISION  
04.30.2008  
EXPIRATION DATE OF THE LICENSE

STATE OF HAWAII  
DEPARTMENT OF TRANSPORTATION  
HIGHWAYS DIVISION  
**PARTIAL HIGHWAY ILLUMINATION  
CALCULATION POINTS PLAN IV**  
H-2 RAIL LIGHT REPLACEMENT,  
VICINITY OF WAHIAWA OFF RAMP  
Project No. HWY-0-03-05MR  
Scale: AS NOTED Date: MAY 2008  
SHEET No. E-32 OF 35 SHEETS

FED. ROAD DIST. NO.	STATE	PROJ. NO.	FISCAL YEAR	SHEET NO.	TOTAL SHEETS
HAWAII	HAW.	HWY-0-03-05MR	2008	34	38



MATCHLINE STA. 84+00, SEE CONT. SHT. E-32



**PARTIAL HIGHWAY ILLUMINATION CALCULATION POINTS PLAN V**  
SCALE: 1"=20'



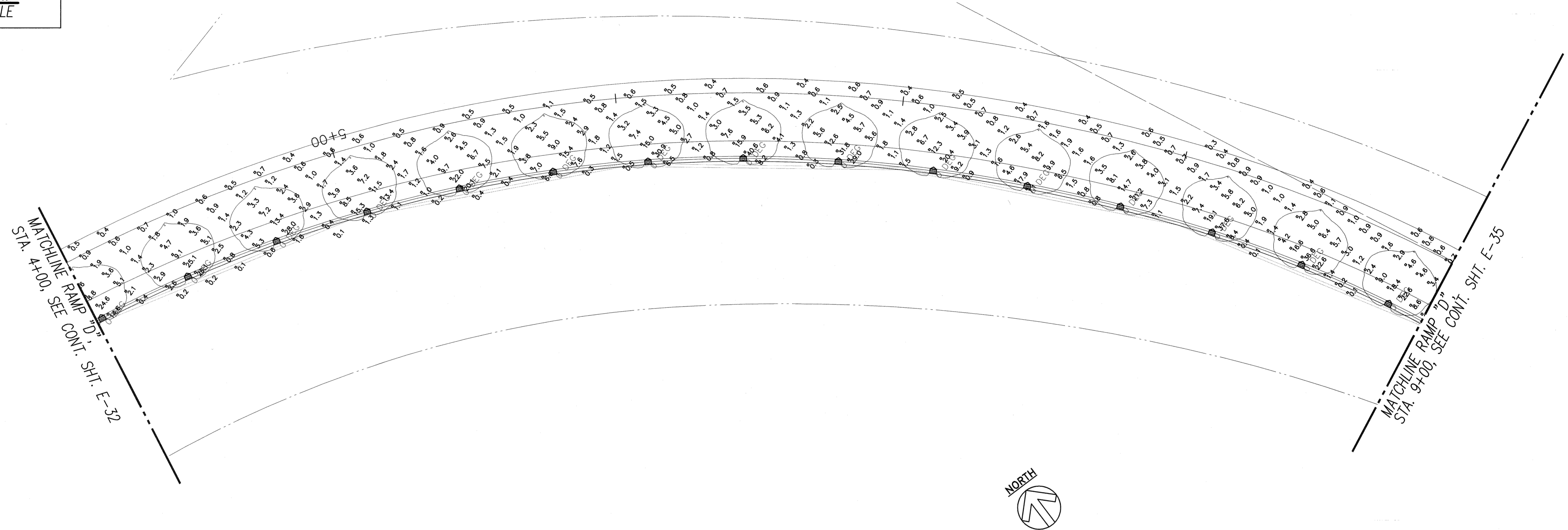
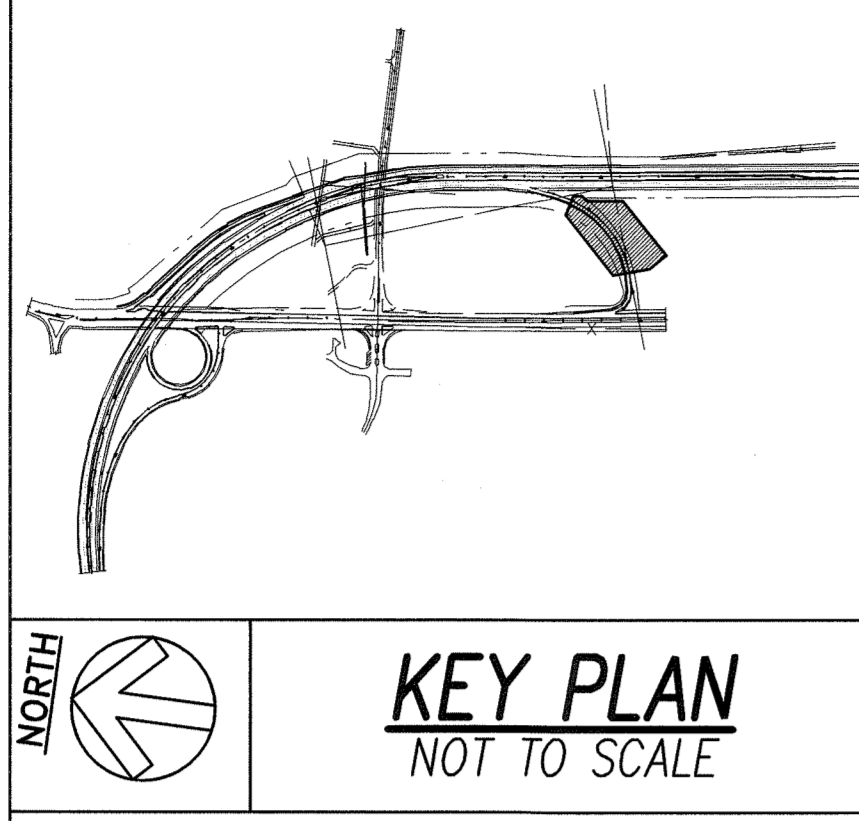
SURVEY PLOTTED BY	DATE
DRAWN BY	
TRACED BY	
DESIGNED BY	
QUANTITIES BY	
CHECKED BY	
No.	

LAST SAVE: 05/21/08 @ 13:19:40 BY: AM PLOT SC: 1=20  
Z:\CAD\PROJECTS\24056A\033\_24056A\_roadway illumination level Plan V SHEETS: R12-REV2\_24056A\_JCTPLAN\_24056A-WAHAWATERCHANGE\_24056A-ALL-ELEC-ILLUM-CALCS

RONALD N. S. HO & ASSOCIATES, INC.  
Electrical Engineers  
**ANDREW I. MIYASATO**  
LICENSED PROFESSIONAL ENGINEER  
No. 4340-E  
HAWAII, U.S.A.  
05.22.08  
*Andrew I. Miyasato*  
THIS WORK WAS PREPARED BY ME OR UNDER MY SUPERVISION  
04.30.2008  
EXPIRATION DATE OF THE LICENSE

STATE OF HAWAII  
DEPARTMENT OF TRANSPORTATION  
HIGHWAYS DIVISION  
**PARTIAL HIGHWAY ILLUMINATION  
CALCULATION POINTS PLAN V**  
H-2 RAIL LIGHT REPLACEMENT,  
VICINITY OF WAHIAWA OFF RAMP  
Project No. HWY-0-03-05MR  
Scale: AS NOTED Date: MAY 2008  
SHEET No. E-33 OF 35 SHEETS

FED. ROAD DIST. NO.	STATE	PROJ. NO.	FISCAL YEAR	SHEET NO.	TOTAL SHEETS
HAWAII	HAW.	HWY-0-03-05MR	2008	35	38



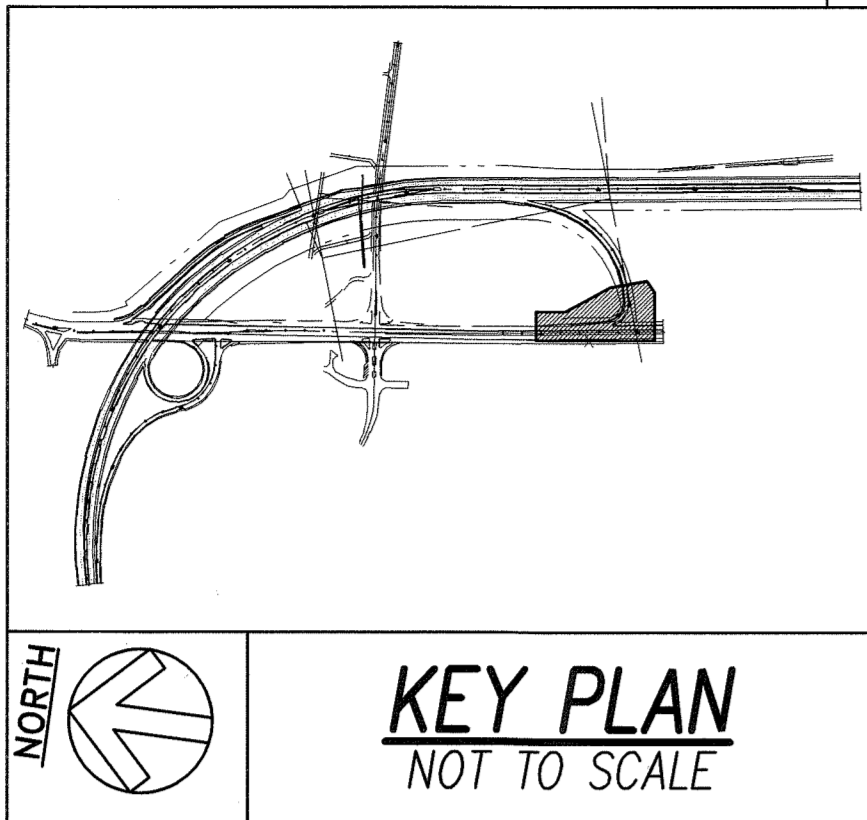
**PARTIAL HIGHWAY ILLUMINATION CALCULATION POINTS PLAN VI**  
SCALE: 1"=20'

ORIGINAL PLAN	DATE
SURVEY PLOTTED BY	
DRAWN BY	
TRACED BY	
DESIGNED BY	
CHECKED BY	
NO.	

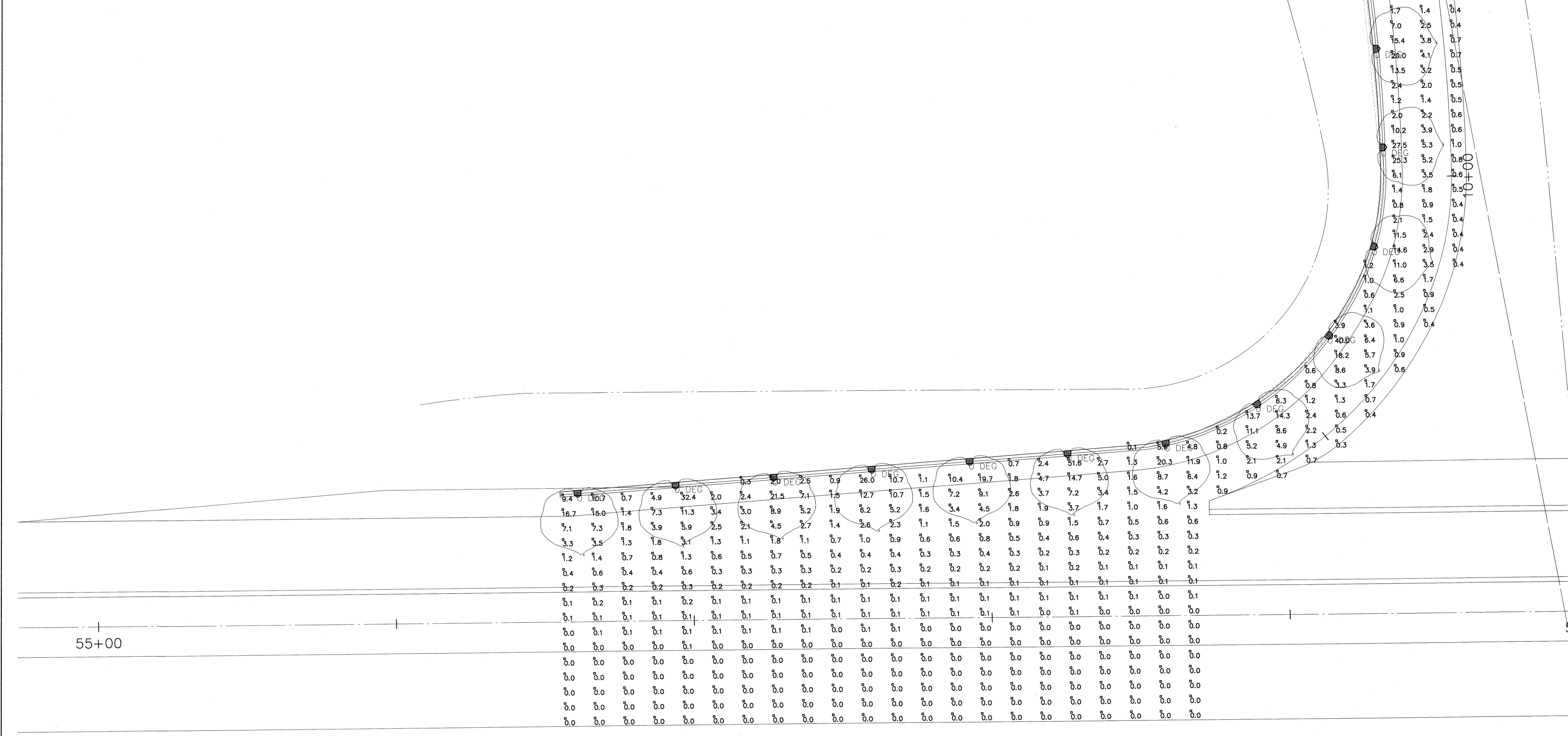
LAST SAVE: 05/27/08 @ 13:26:28 BY: AM PILOT SC 1.000000-20.000000  
 Z:\ROAD\PROJECTS\24058A\24058A\_24058A\_roadway illumination\new plan v\PREPS\_XHP-REV2\_24058A\_AETPLAN\_24058A-WAHAWATERCHANGE\_24058A-ALL-ELEC-LUM-CALC

RONALD N. S. HO & ASSOCIATES, INC. Electrical Engineers  Andrew I. Miyazaki 05.22.08 THIS WORK WAS PREPARED BY ME OR UNDER MY SUPERVISION 04.30.2008 EXPIRATION DATE OF THE LICENSE	STATE OF HAWAII DEPARTMENT OF TRANSPORTATION HIGHWAYS DIVISION <b>PARTIAL HIGHWAY ILLUMINATION          CALCULATION POINTS PLAN VI</b> H-2 RAIL LIGHT REPLACEMENT, VICINITY OF WAHIAWA OFF RAMP
	Project No. HWY-0-03-05MR Scale: AS NOTED Date: MAY 2008
	SHEET No. E-34 OF 35 SHEETS
	<b>35</b>

FED. ROAD DIST. NO.	STATE	PROJ. NO.	FISCAL YEAR	SHEET NO.	TOTAL SHEETS
HAWAII	HAW.	HWY-0-03-05MR	2008	36	38



MATCHLINE RAMP "D", STA. 9+00, SEE CONT. SHT. E-34



ORIGINAL PLAN	DATE
DESIGNED BY	
TRACED BY	
NOTE BOOK	
DESIGNED BY	
QUANTITIES BY	
CHECKED BY	
No.	

LAST SAVE: 05/21/08 @ 13:05:30 BY: AM PLT SC 1-20  
 Z:\CAD\PROJECTS\24056A\03\_24056A\_roadway illumination level Plan VII XREFS: HWY-0-03-05MR\INTERCHANGE\_24056A-ALL-ELEC-ILLUM-CALC

**PARTIAL HIGHWAY ILLUMINATION CALCULATION POINTS PLAN VII**  
 SCALE: 1"=20'

RONALD N. S. HO & ASSOCIATES, INC.  
 Electrical Engineers

**ANDREW I. MIYASATO**  
 LICENSED PROFESSIONAL ENGINEER  
 No. 4340-E  
 HAWAII, U.S.A.

05.22.08  
*Andrew I. Miyasato*

THIS WORK WAS PREPARED BY ME OR UNDER MY SUPERVISION  
 04.30.2008  
 EXPIRATION DATE OF THE LICENSE

STATE OF HAWAII  
 DEPARTMENT OF TRANSPORTATION  
 HIGHWAYS DIVISION  
**PARTIAL HIGHWAY ILLUMINATION**  
**CALCULATION POINTS PLAN VII**  
 H-2 RAIL LIGHT REPLACEMENT,  
 VICINITY OF WAHIAWA OFF RAMP

Project No. HWY-0-03-05MR  
 Scale: AS NOTED Date: MAY 2008  
 SHEET No. E-35 OF 35 SHEETS