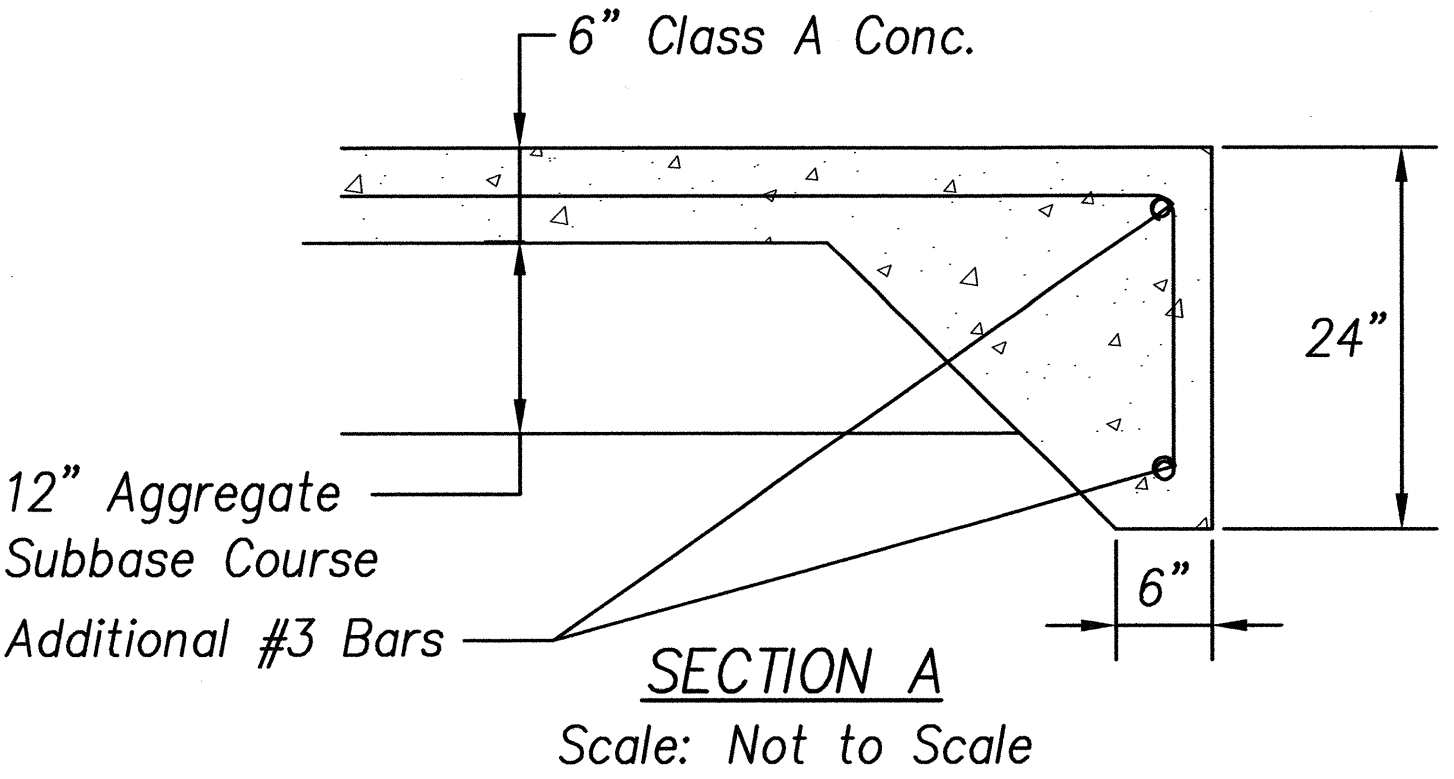
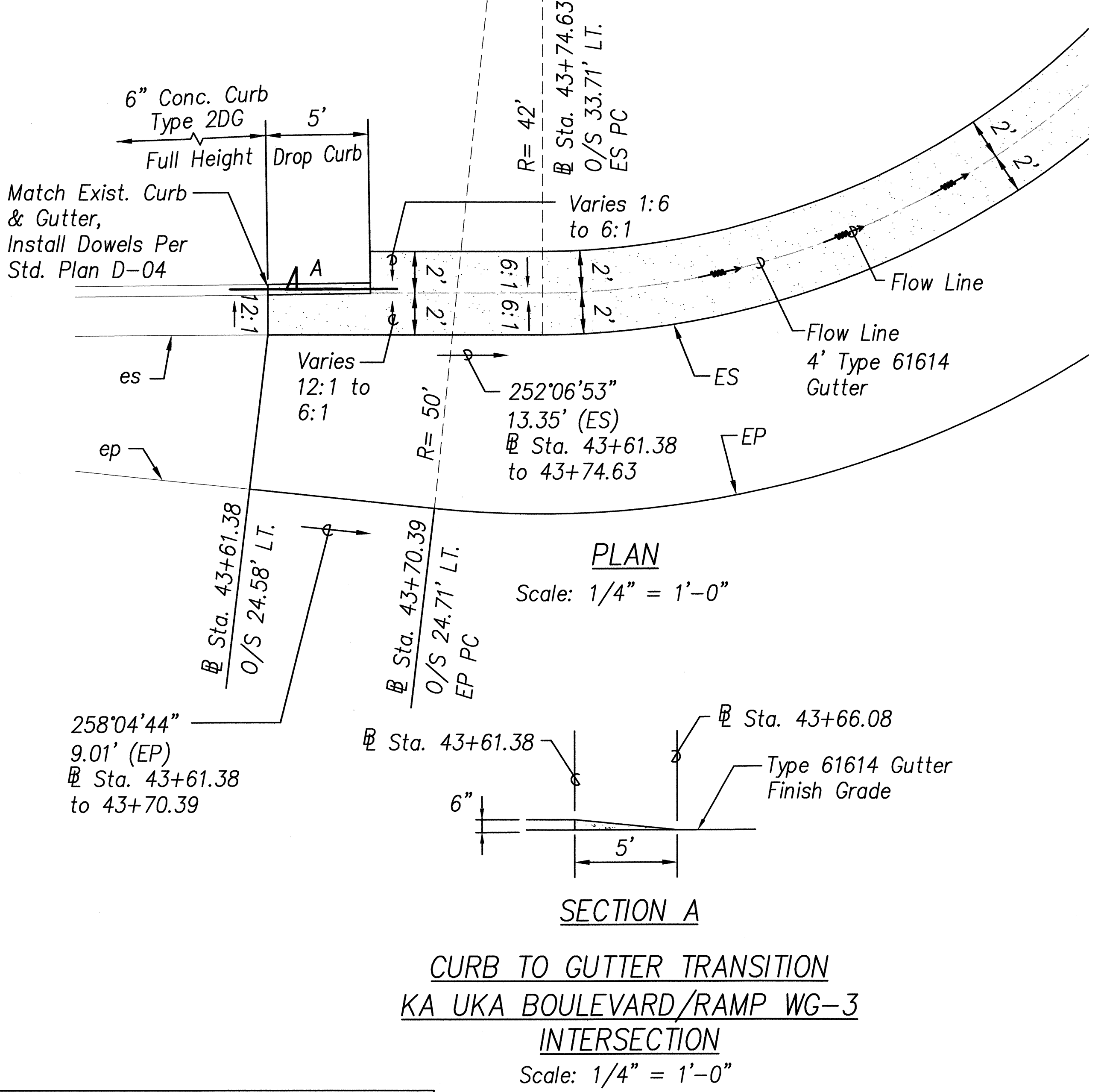
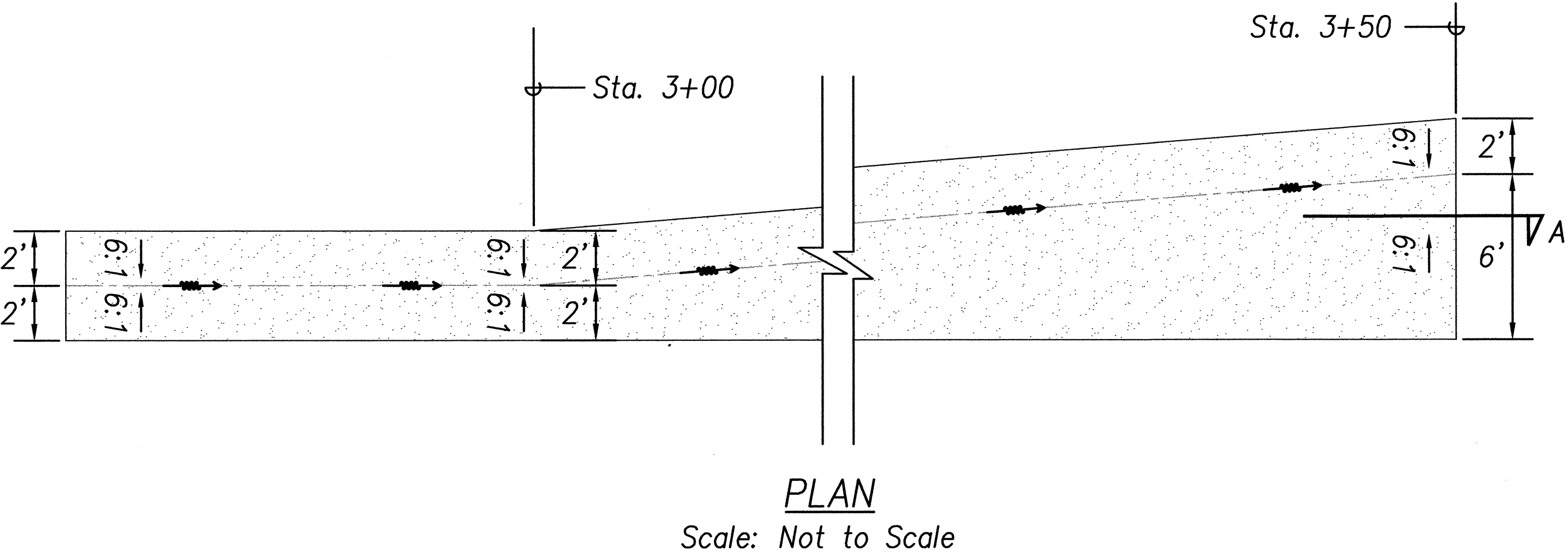
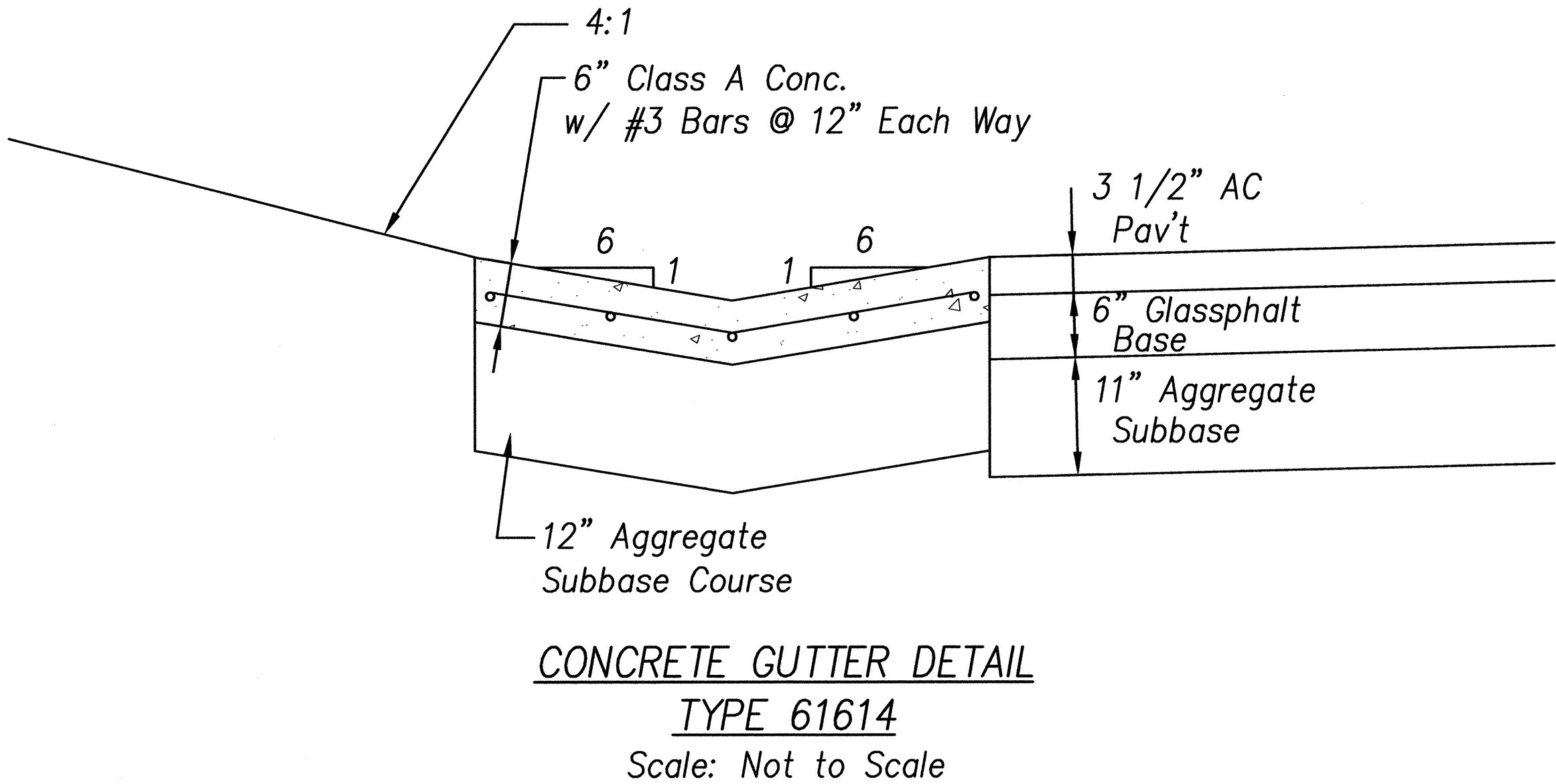
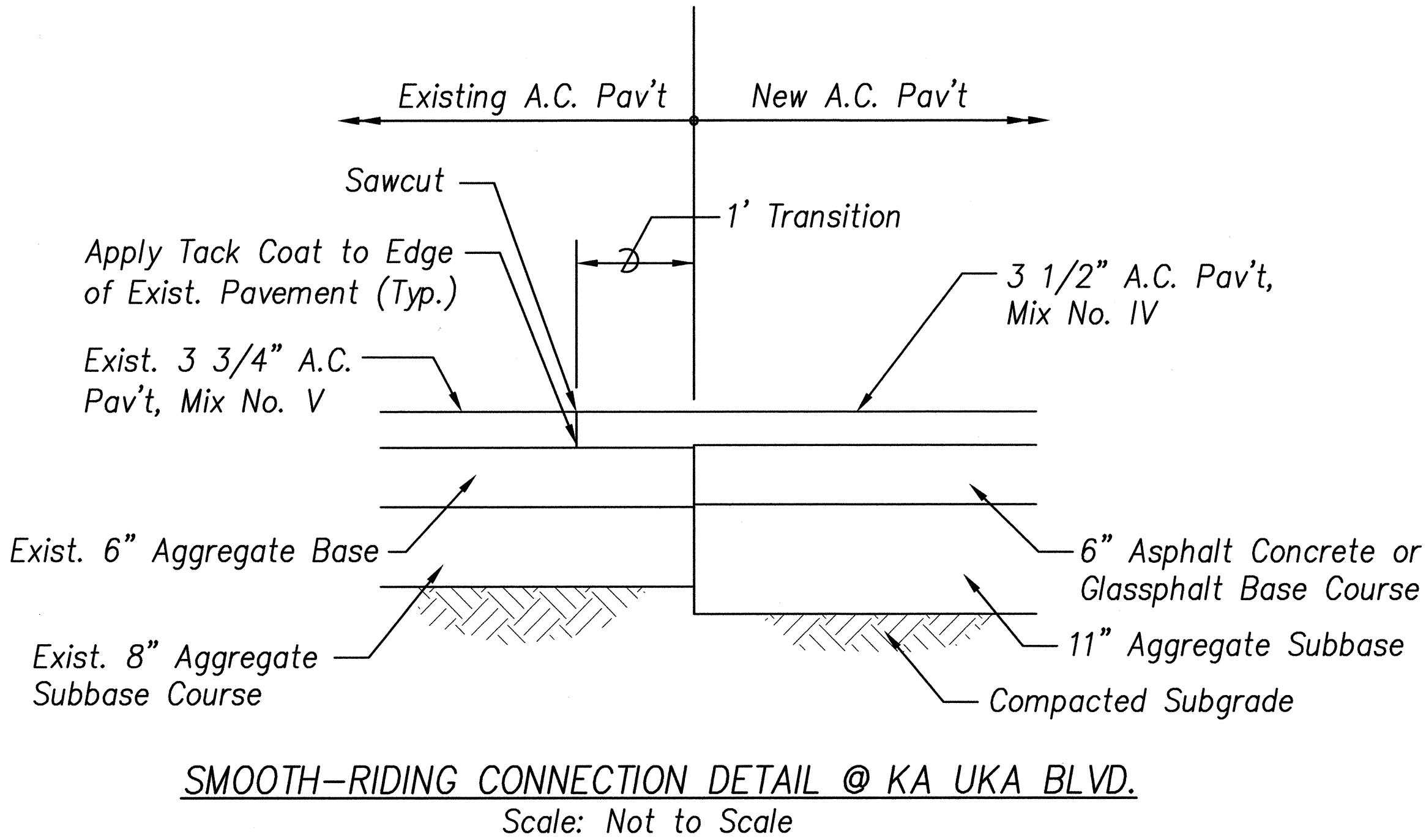


FED. ROAD DIST. NO.	STATE	PROJ. NO.	FISCAL YEAR	SHEET NO.	TOTAL SHEETS
HAWAII	HAW.	IM-H2-1(33)	2007	23	168



KENNETH O. NAGAI
LICENSED PROFESSIONAL ENGINEER
No. 3265-C
HAWAII, U.S.A.
APRIL 30, 2008
EXPIRATION DATE OF LICENSE
THIS WORK WAS PREPARED BY ME OR UNDER MY SUPERVISION

STATE OF HAWAII
DEPARTMENT OF TRANSPORTATION
HIGHWAYS DIVISION

SECTIONS & MISCELLANEOUS DETAILS
WAIPIO INTERCHANGE, RAMP WG-3

INTERSTATE ROUTE H-2 REHABILITATION
Waipio Interchange and Mililani Interchange
On/Off Ramps, Ka Uka Boulevard and
Meheula Parkway Overpasses, & Kipapa Stream Bridge
Federal Aid Project No. IM-H2-1(33)
SCALE: AS NOTED DATE: NOVEMBER 2006

SHEET No. 1 OF 1 SHEETS

SURVEY PLOTTED BY	DATE
DRAWN BY	
TRACED BY	
DESIGNED BY	
CHECKED BY	
ORIGINAL PLAN	No.

FED. ROAD DIST. NO.	STATE	PROJ. NO.	FISCAL YEAR	SHEET NO.	TOTAL SHEETS
HAWAII	HAW.	IM-H2-1(33)	2007	24	168

CURB RAMP AND SIDEWALK NOTES:

1. These typical details are intended as curb ramp guidelines for design and construction.
2. A 2% maximum cross slope shall be maintained in the direction of pedestrian traffic.
3. Subject to field conditions, the Engineer shall determine the final location of curb ramps.
4. All pullboxes shall be installed away from the curb ramp and within the sidewalk/unpaved area to the maximum extent feasible.
5. Where necessary, existing pullboxes, handholes, manholes, etc. shall be adjusted to match curb ramp grade. Adjustments shall not be paid for separately but shall be considered incidental to the various curb ramp items unless indicated otherwise.
6. Transitions from ramps to gutters and roadways shall be flush.
7. Curb ramps and sidewalks shall be constructed to eliminate ponding to the maximum extent feasible.
8. The pedestrian push button shall meet operational and reach requirements of the American with Disabilities Act Accessibility Guidelines (ADAAG):
 - a) Forward Reach. The maximum height for forward reach shall be 48".
 - b) Side Reach. The maximum height for side reach shall be 54".
 - c) Operation. Controls and operating mechanisms shall be operable with one hand and shall not require tight grasping, pinching, or twisting of the wrist. The force required to activate controls shall be no greater than 5 lbf.
9. The maximum slopes of adjoining gutters or road surface immediately fronting the curb ramp shall not exceed 5% for Type A and D ramps and 8.33% for Type B, C, and E ramps.
10. There shall be a 30"x48" level ground surface (2% max. cross slope, both directions) for a forward or side approach, as appropriate, to a pedestrian push button.
11. Construction joints are required to join curb ramps with sidewalks.
12. Unless otherwise noted, new gutters are required as shown.
13. All curb ramps shall be reinforced with 6x6 W1.4/W1.4 welded wire fabric.
14. Surface of sidewalks and curb ramps shall be firm, stable, and slip-resistant. This includes the surfaces of pullboxes, valve covers, manhole covers, etc.
15. Bed course material is required for curb ramps, sidewalks, and gutters.
16. All sidewalks shall provide a minimum clear width of 3'-0" (excluding curb) for pedestrian circulation. If this cannot be met, a minimum 32-inch clear width is allowed for a distance of 24-inches.
17. Passing spaces along new sidewalks with 5' clear width or less shall be provided at maximum 200' intervals as required by ADA guidelines. The passing area shall be a minimum 5' wide by 5' long as feasible.
18. If possible, install utility poles, fire hydrants, light poles, sign posts, pullboxes, etc. off of sidewalk but within the right-of-way.
19. Objects protruding from utility poles and walls adjacent to the sidewalks (i.e. wall mounted fire hydrants, telephones, meters on poles, etc.) shall be mounted to meet the current American with Disabilities Act Accessibility Guidelines (ADAAG) and will be subject to Engineer's approval.
20. If a curb ramp is not constructed according to the plans, the Contractor shall reconstruct the curb ramp at no cost to the State. Construction tolerance for Portland Cement Concrete shall be based on 1/4 inch per 10 ft. (±0.2%). Remedial measures will not be accepted.
21. Additional information is available from:
 - a) American with Disabilities Act Accessibility Guidelines (ADAAG), Jan. 1998, The Access Board.
 - b) Accessible Rights-of-Way: A Design Guide, Nov. 1999, The Access Board.
 - c) Designing Sidewalks and Trails for Access, Part 1, July 1999, FHWA.
 - d) Designing Sidewalks and Trails for Access, Part 2, Sept. 2001, FHWA.

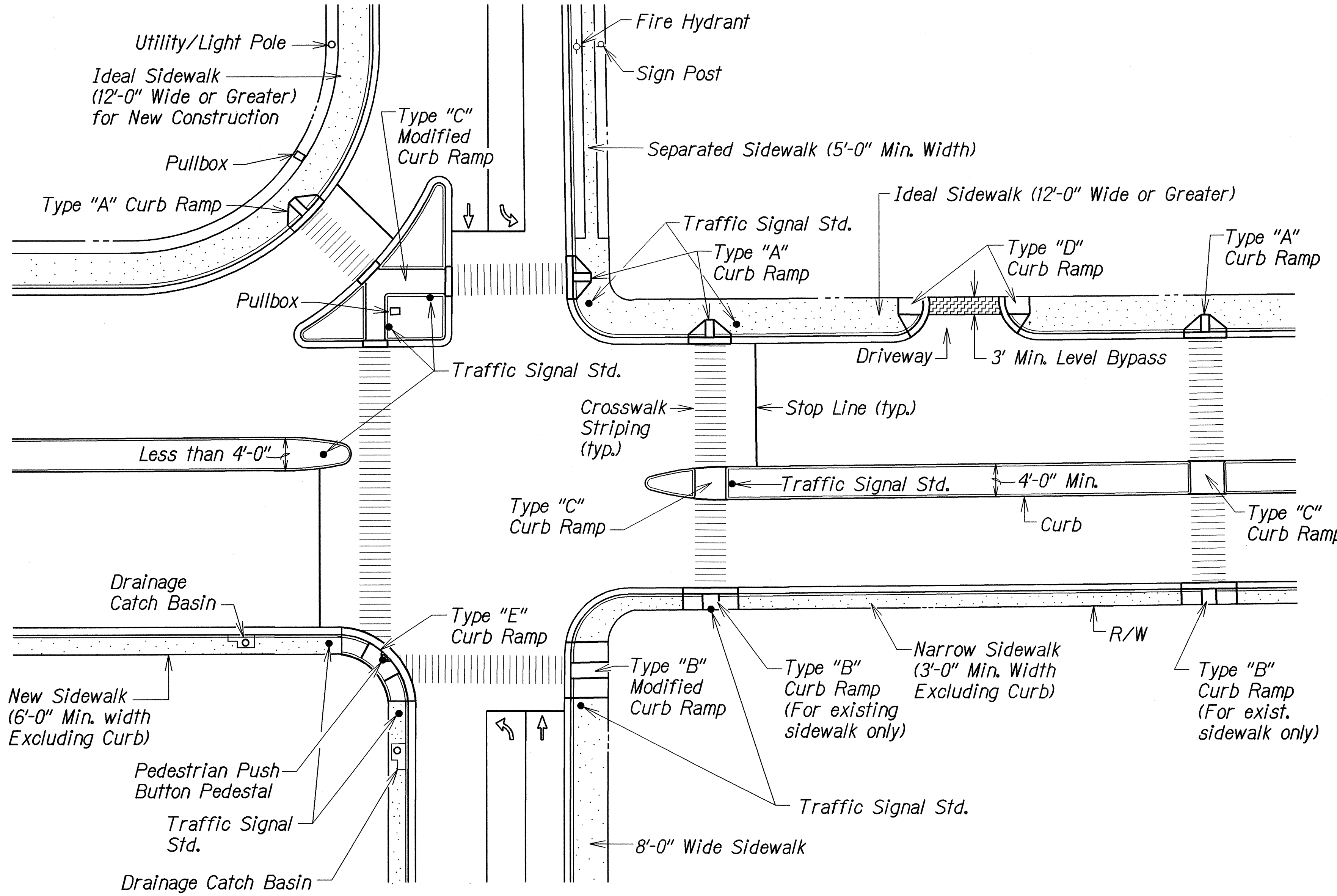
ORIGINAL PLAN	SURVEY PLOTTED BY	DATE
NOTE BOOK	DESIGNED BY	
	QUANTITIES BY	
	CHECKED BY	

R 01-30-02 TE-00 sh. 1 of 6 tdl/usr2/traffic/std/curbrampnoted.dgn

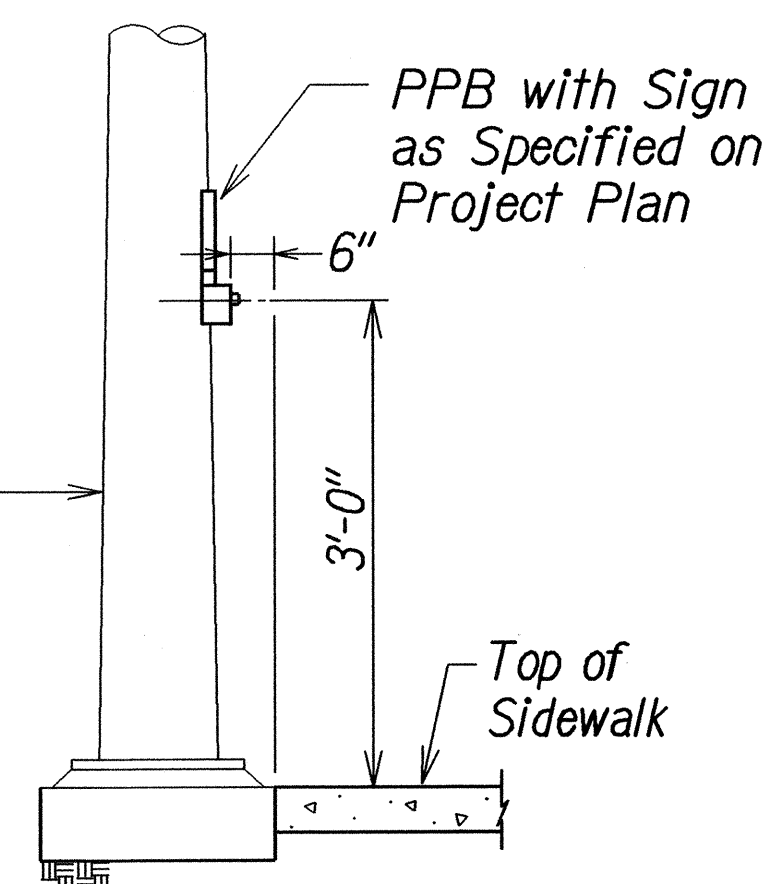
STATE OF HAWAII DEPARTMENT OF TRANSPORTATION HIGHWAYS DIVISION
CURB RAMP AND SIDEWALK NOTES
<u>INTERSTATE ROUTE H-2 REHABILITATION</u>
<u>Waipio Interchange & Mililani Interchange</u>
<u>On/Off Ramps, Ka Uka Blvd. & Meheula Parkway</u>
<u>Overpasses, & Kipapa Stream Bridge</u>
<u>Federal Aid Project No. IM-H2-1(33)</u>
Date: December, 2006

SHEET No. 2 OF 4 SHEETS

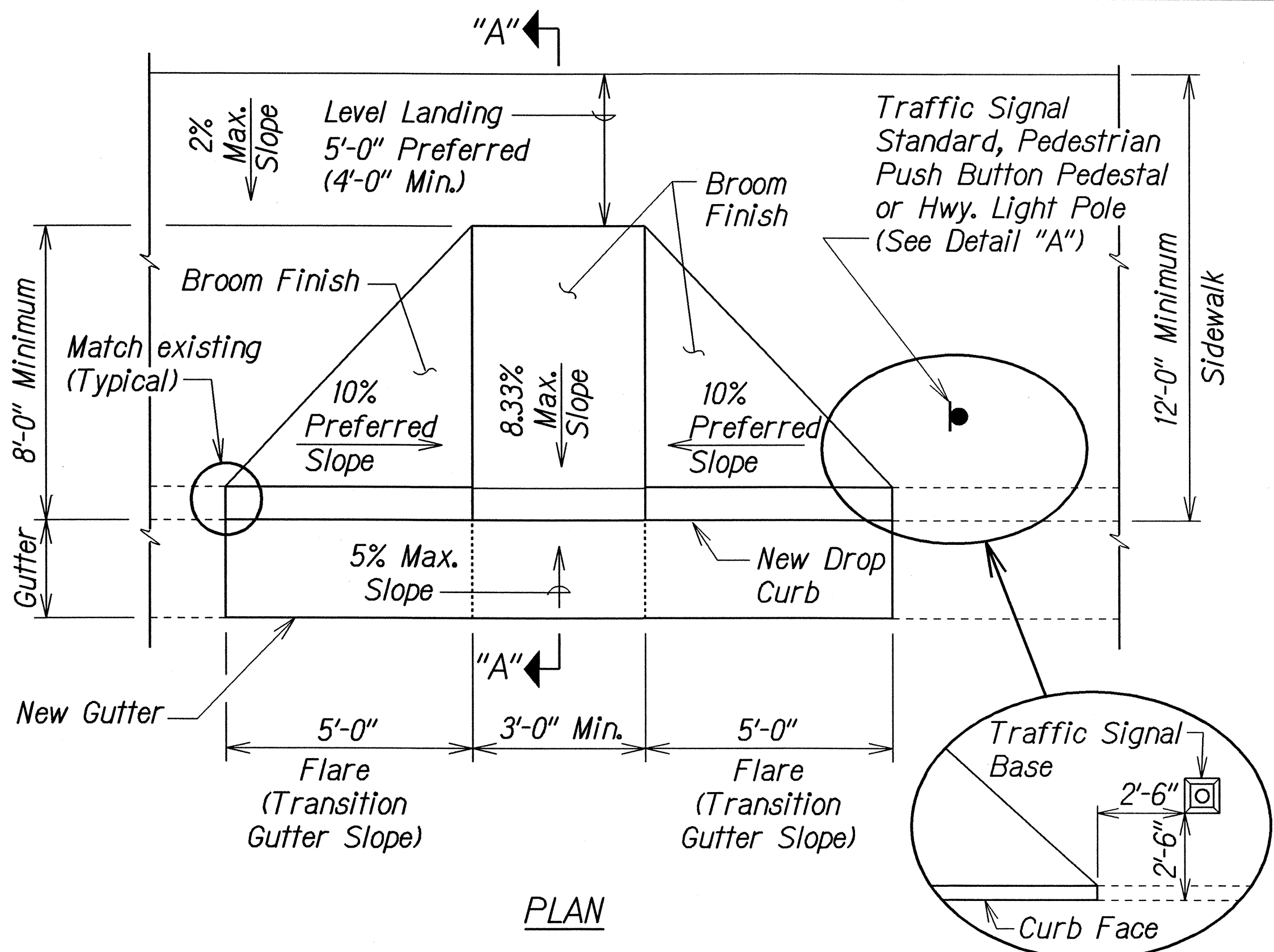
FED. ROAD DIST. NO.	STATE	PROJ. NO.	FISCAL YEAR	SHEET NO.	TOTAL SHEETS
HAWAII	HAW.	IM-H2-1(33)	2007	25	168



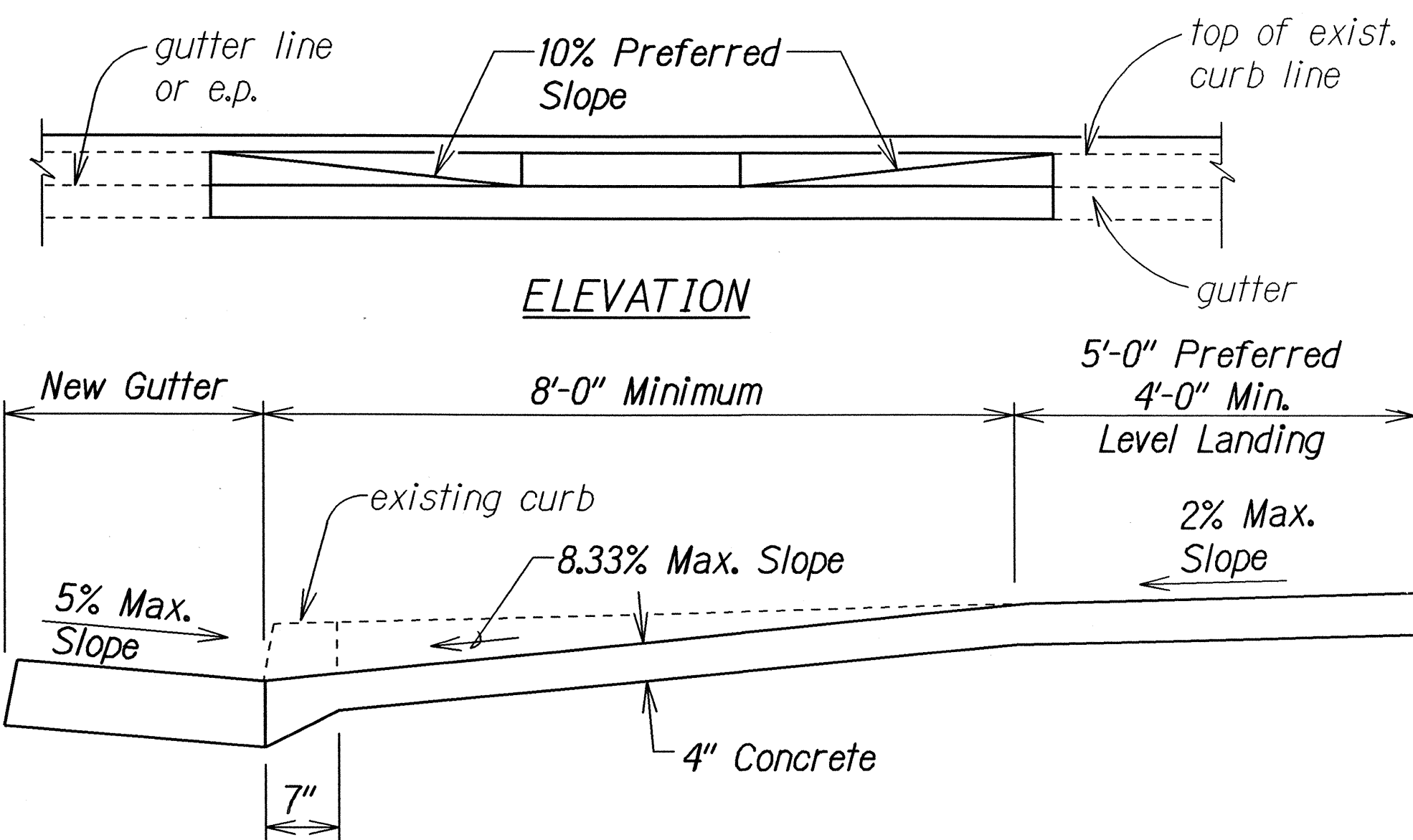
TYPICAL CURB RAMPS



DETAIL "A"



PLAN



SECTION "A-A"

CURB RAMP - TYPE "A"
SIDEWALK WIDTH 12'-0" OR GREATER

STATE OF HAWAII
DEPARTMENT OF TRANSPORTATION
HIGHWAYS DIVISION

CURB RAMP DETAILS

INTERSTATE ROUTE H-2 REHABILITATION
Waipio Interchange & Mililani Interchange
On/Off Ramps, Ka Uka Blvd. & Meheula Parkway
Overpasses, & Kipapa Stream Bridge
Federal Aid Project No. IM-H2-1(33)
Not to Scale
Date: December, 2006

ORIGINAL PLAN	DATE
SURVEY PLOTTED BY	
DESIGNED BY	
NOTED BY	
CHECKED BY	
QUANTITIES BY	
DATE	

R 10-16-00 TE-68 sht. 2 of 6

td1/usc2/traffic/std/curbampa.dgn

