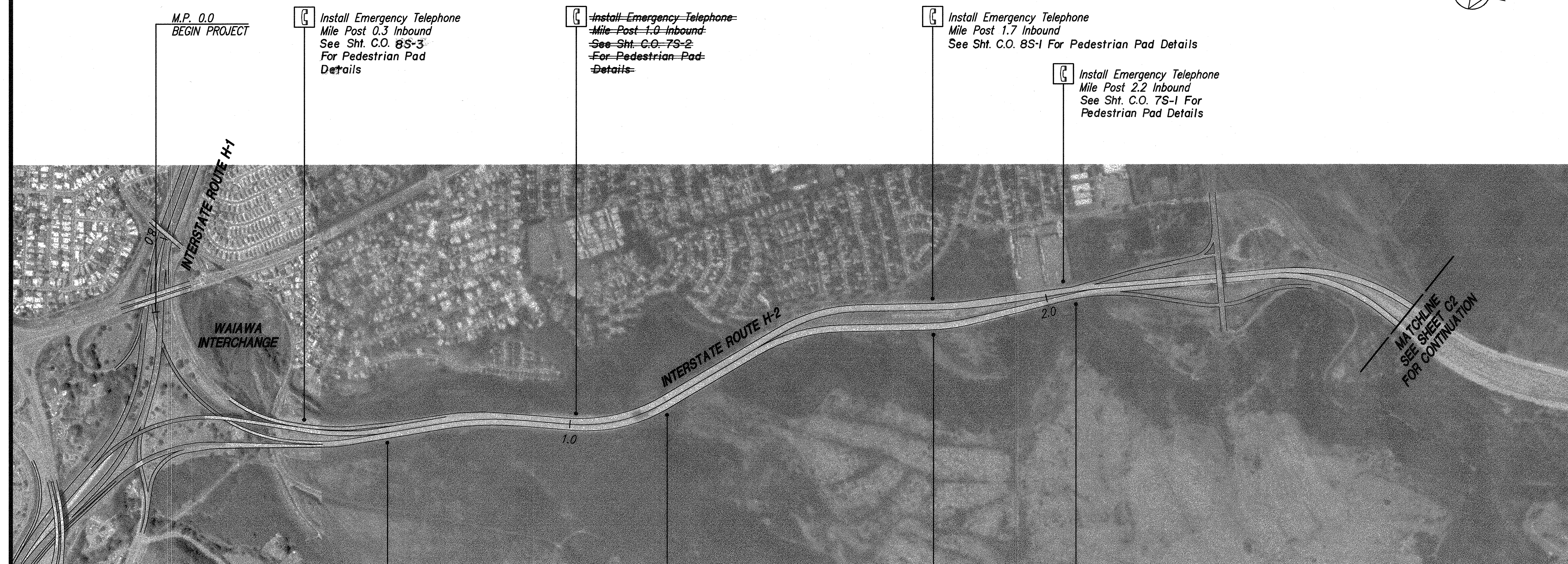


FED. ROAD DIST. NO.	STATE	FED. AID PROJ. NO.	FISCAL YEAR	SHEET NO.	TOTAL SHEETS
HAWAII	HAW.	STP-H2-1(31)	2001	3	10



ORIGINAL PLAN	SURVEY PLOTTED BY	DATE
NOTE BOOK	DRAWN BY	
	TRACED BY	
	QUANTITIES BY	
	CHECKED BY	
No.		

CDG by J. Minura, 85-52

Last Saved: J:\Emergency\_Tel\H2\Align\H2-EMRG\_TEL01.dwg 09/01/00 at 14:43

Install Emergency Telephone  
Mile Post 0.7 Outbound  
See Sht. C.O. 10S-1 For  
Pedestrian Pad Details

Install Emergency Telephone  
Mile Post 1.2 Outbound  
No Pedestrian Pad Required

Install Emergency Telephone  
Mile Post 1.7 Outbound  
See Sht. C.O. 8S-1 For  
Pedestrian Pad Details

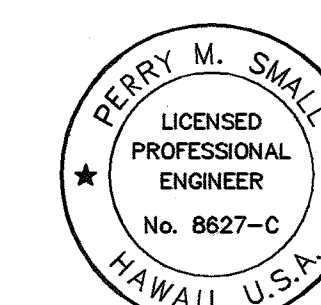
Install Emergency Telephone  
Mile Post 2.25 Outbound  
See Sht. C.O. 7S-1 For  
Pedestrian Pad Details

Install Emergency Telephone  
Mile Post 0.3 Inbound  
See Sht. C.O. 8S-3  
For Pedestrian Pad  
Details

Install Emergency Telephone  
Mile Post 1.0 Inbound  
See Sht. C.O. 7S-2  
For Pedestrian Pad  
Details

Install Emergency Telephone  
Mile Post 1.7 Inbound  
See Sht. C.O. 8S-1 For Pedestrian Pad Details

Install Emergency Telephone  
Mile Post 2.2 Inbound  
See Sht. C.O. 7S-1 For  
Pedestrian Pad Details



THIS WORK WAS PREPARED BY ME  
OR UNDER MY SUPERVISION.

*[Signature]*

STATE OF HAWAII  
DEPARTMENT OF TRANSPORTATION  
HIGHWAYS DIVISION

**PLAN - 1**

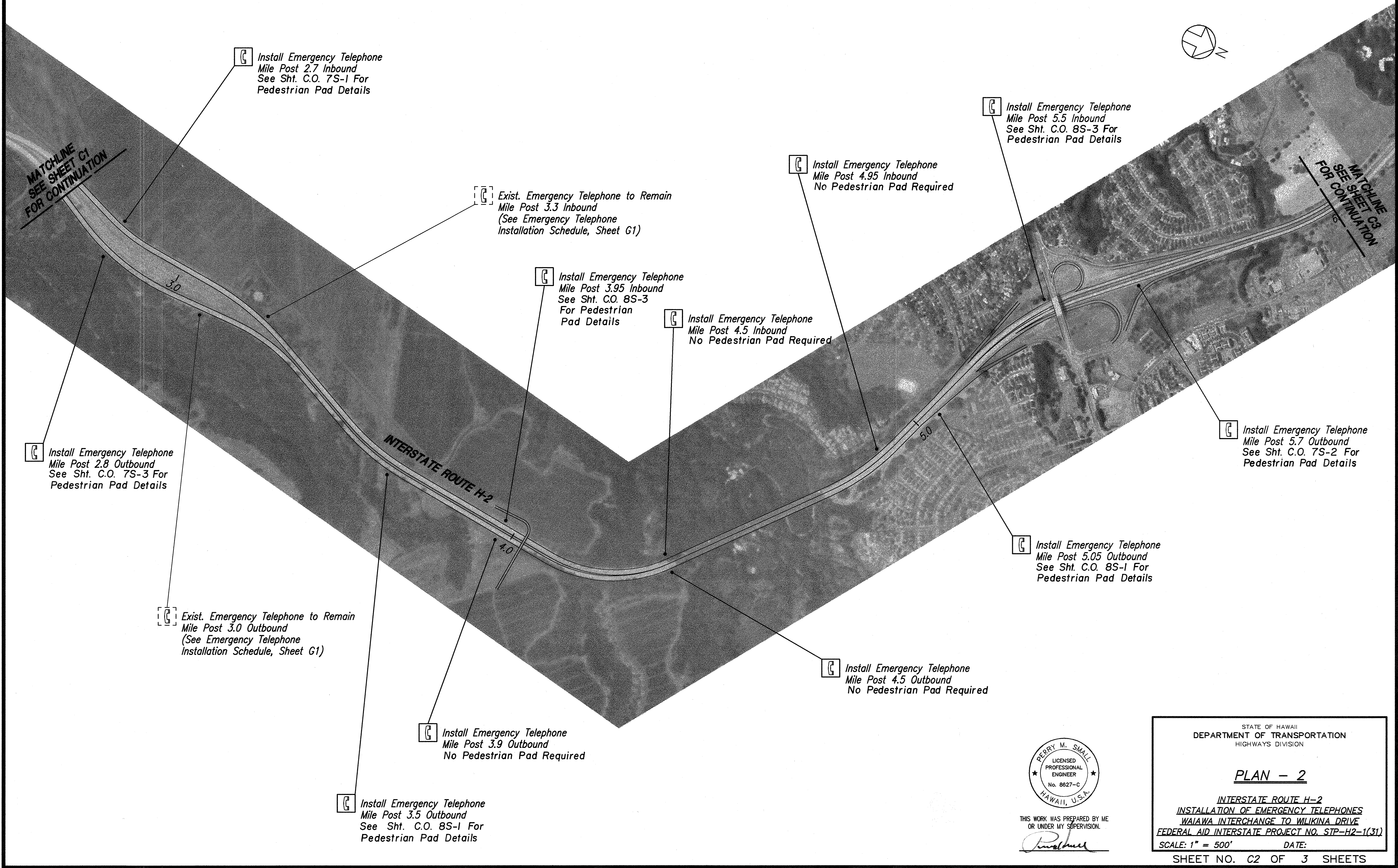
INTERSTATE ROUTE H-2  
INSTALLATION OF EMERGENCY TELEPHONES  
WAIAWA INTERCHANGE TO WILIKINA DRIVE  
FEDERAL AID INTERSTATE PROJECT NO. STP-H2-1(31)  
SCALE: 1" = 500' DATE: AUGUST 2000  
SHEET NO. C1 OF 3 SHEETS

"AS-BUILT"

C.O. 3



FED. ROAD DIST. NO.	STATE	FED. AID PROJ. NO.	FISCAL YEAR	SHEET NO.	TOTAL SHEETS
HAWAII	HAW.	STP-H2-1(31)	2001	4	10



ORIGINAL PLAN	SURVEY PLOTTED BY	DATE
NOTE BOOK	DESIGNED BY	
	QUANTITIES BY	
	CHECKED BY	
No. _____		

CAD by E. DELA CRUZ, 05-02

Last Saved: J:\Emergency\_Tel\H2\Align\H2-EMRG\_TEL02.dwg 09/29/00 at 11:39

THIS WORK WAS PREPARED BY ME  
OR UNDER MY SUPERVISION.

STATE OF HAWAII

DEPARTMENT OF TRANSPORTATION

HIGHWAYS DIVISION

PLAN - 2

INTERSTATE ROUTE H-2

INSTALLATION OF EMERGENCY TELEPHONES

WAI'AWA INTERCHANGE TO WILIKINA DRIVE

FEDERAL AID INTERSTATE PROJECT NO. STP-H2-1(31)

SCALE: 1" = 500'

DATE:

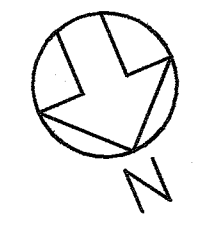
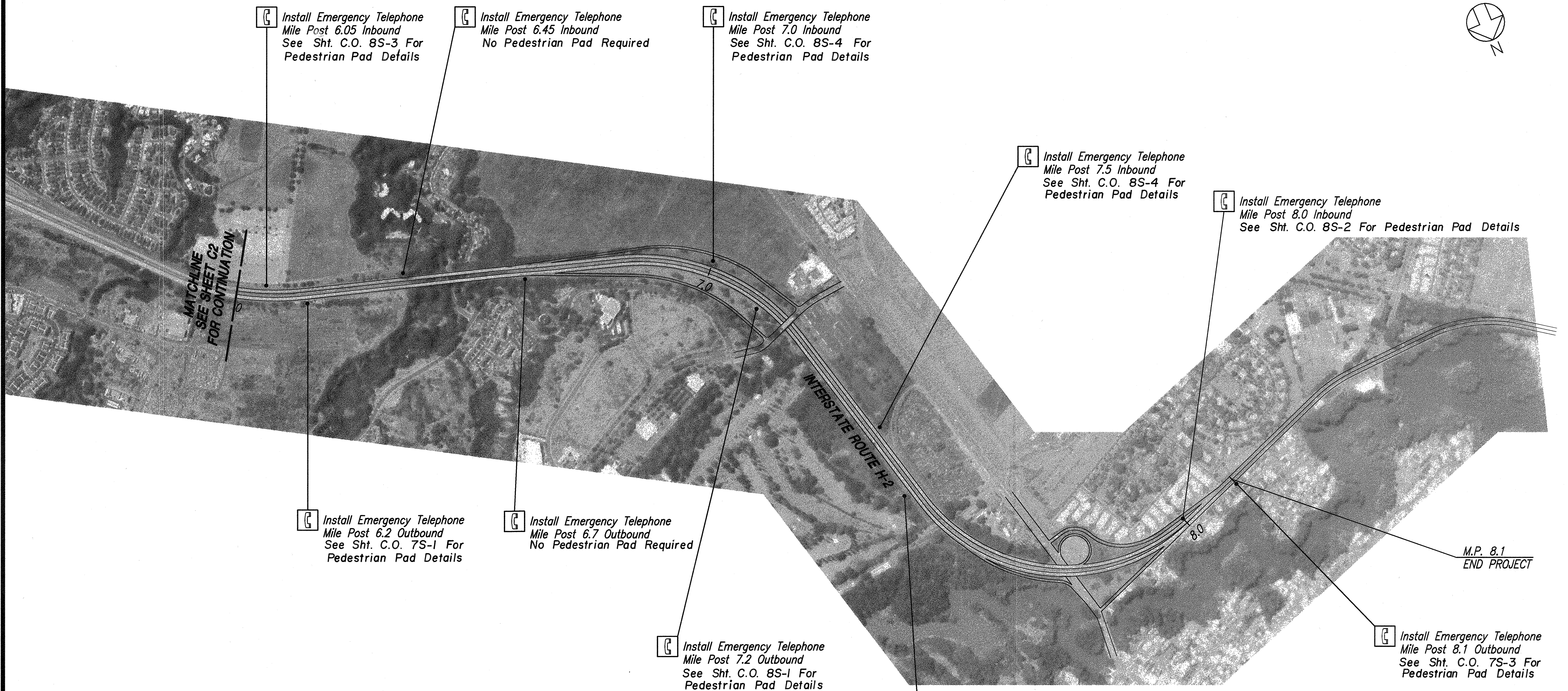
SHEET NO. C2 OF 3 SHEETS

C.O. 4

"AS-BUILT"



FED. ROAD DIST. NO.	STATE	FED. AID PROJ. NO.	FISCAL YEAR	SHEET NO.	TOTAL SHEETS
HAWAII	HAW.	STP-H2-1(31)	2001	5	10



ORIGINAL PLAN	SURVEY PLOTTED BY	DATE
NOTE BOOK	DESIGNED BY	*****
QUANTITIES BY	CHECKED BY	
No.		

CAD by E. DELA CRUZ 95-92

PERRY M. SMALL

LICENSED PROFESSIONAL ENGINEER

No. 8627-C

HAWAII, U.S.A.

THIS WORK WAS PREPARED BY ME OR UNDER MY SUPERVISION.

STATE OF HAWAII  
DEPARTMENT OF TRANSPORTATION  
HIGHWAYS DIVISION

PLAN - 3

INTERSTATE ROUTE H-2  
INSTALLATION OF EMERGENCY TELEPHONES  
WAI'AWA INTERCHANGE TO WILIKINA DRIVE  
FEDERAL AID INTERSTATE PROJECT NO. STP-H2-1(31)

SCALE: 1" = 500'      DATE:

SHEET NO. C3 OF 3 SHEETS