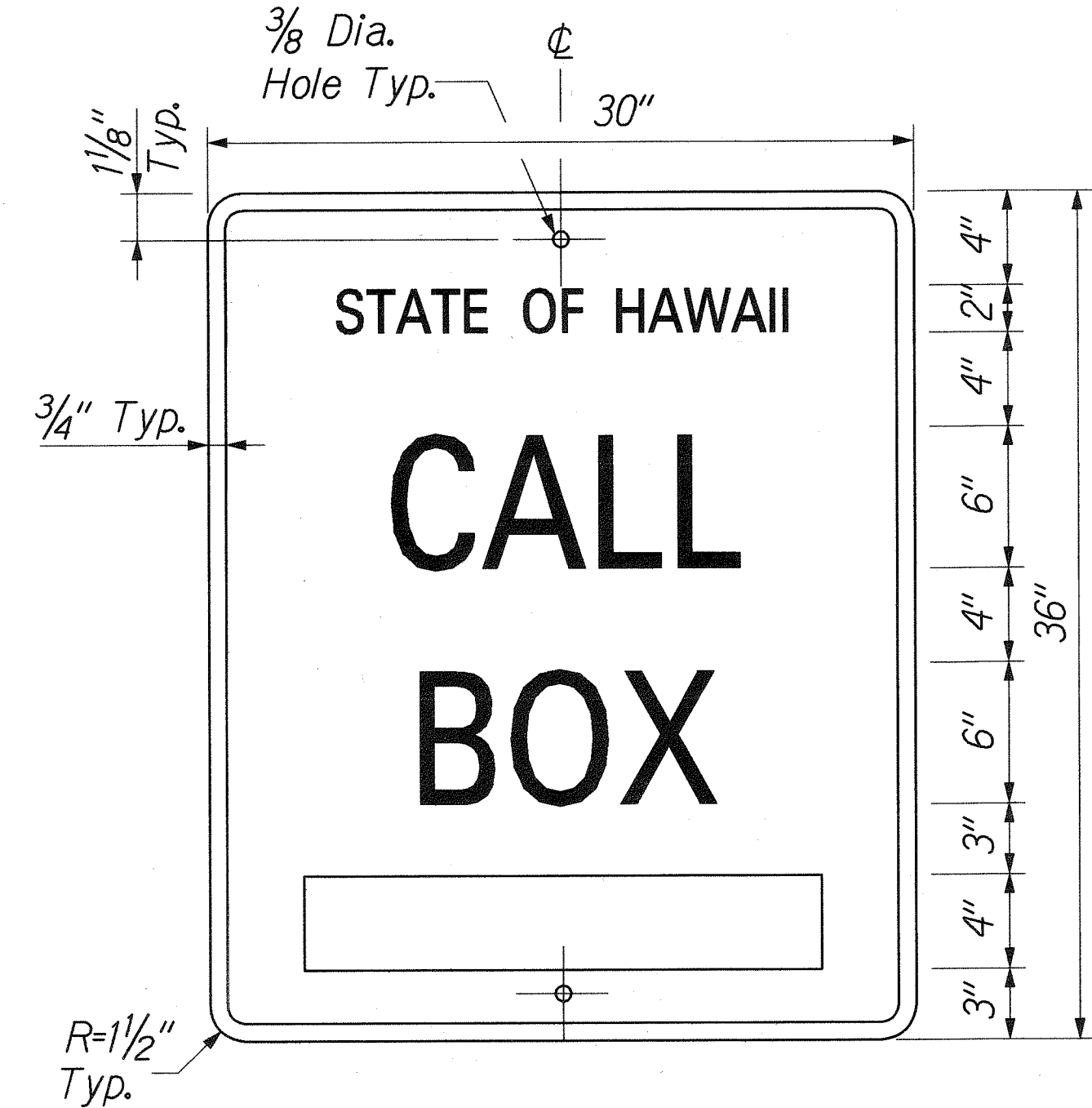
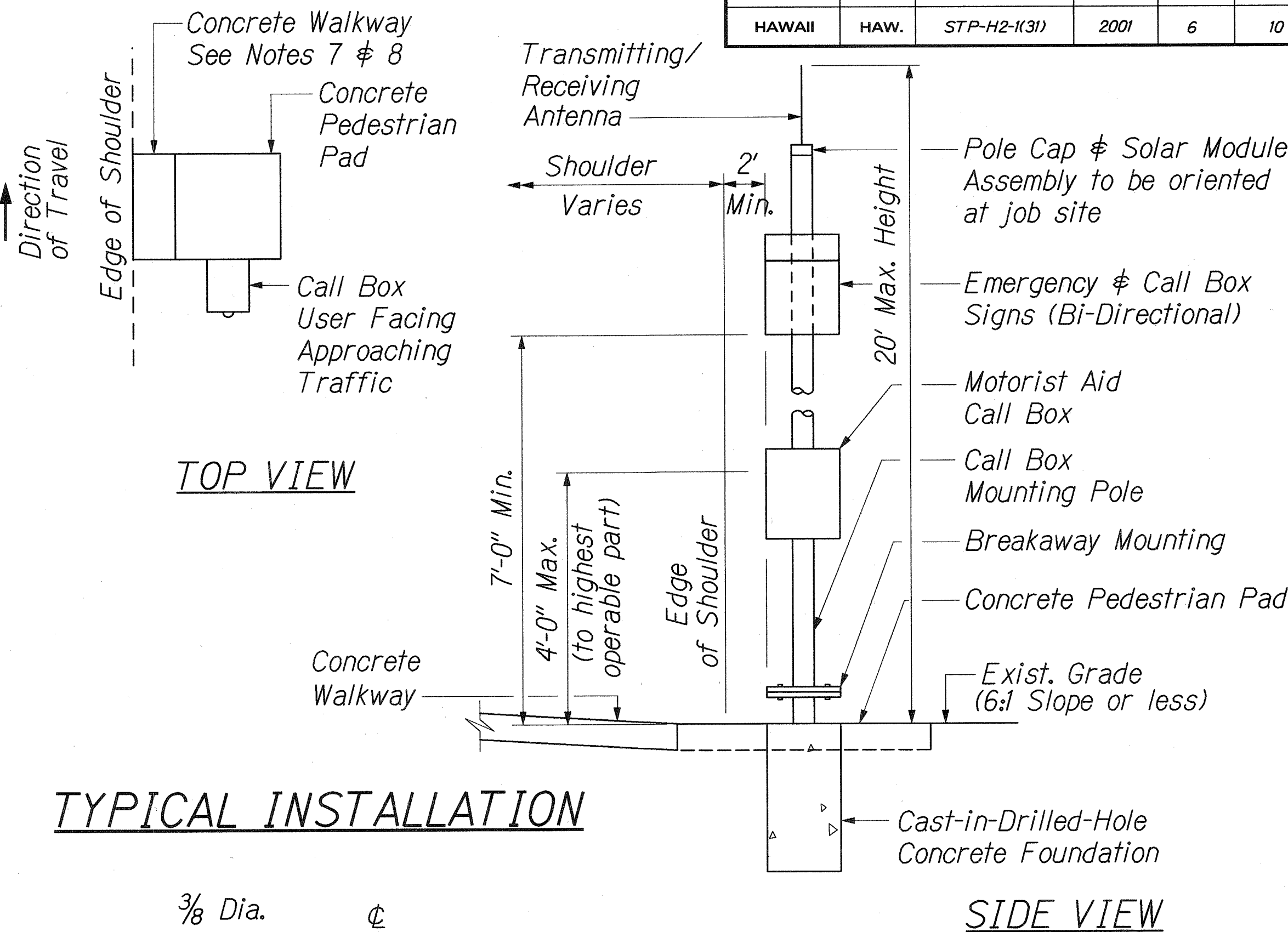


GENERAL NOTES:

- Scope of work for this project involves installation of emergency telephones on mounting poles, construction of concrete walkways, pedestrian pads, accessible ramps, and replacement of existing emergency phones along Interstate Route H-2.
- The Contractor is reminded of the requirements of Subsection 108.01 - Subletting of Contract, which requires him to perform work amounting to not less than 50 percent of the total contract cost less deductible items. Non-compliance with this Subsection may be grounds for rejection of bid.
- The Contractor's attention is directed to the following Sections of the Special Provisions. Subsection 107.13 - Public Convenience and Safety, Subsection 107.21 - Contractor's Responsibility for Utility Property and Services, Section 645 - Traffic Control.
- At the end of each day's work, the Contractor shall remove all equipment and other obstructions to permit free and safe passage of public traffic.
- The exact locations of Emergency Call Box units shall be determined in the field by the Engineer.
- Existing structures and utilities damaged by the Contractor shall be repaired by the Contractor at his expense.
- Concrete walkway from pedestrian pad to edge of shoulder shall not exceed a maximum slope of 5% (20:1). See Sheet No. D1 for detail.
- If concrete walkway from pedestrian pad to edge of shoulder exceeds the maximum slope of 5% (20:1), a concrete accessible ramp shall be constructed. See Sheet No. D1 for detail.
- Excavation and backfilling work will be considered part of Emergency Telephone installation, and payment thereof will be considered as incidental to various contract items.
- The Contractor shall provide 4-inch bed course material under Pedestrian Access (concrete; walkways, pedestrian pads and accessible ramps), except those Pedestrian Access over existing concrete gutter.
- The Contractor shall replace all existing Emergency Telephone Call Box units to meet ADA requirements, and the requirements of the Contract Specifications.
- The Contractor shall adjust, and upgrade existing concrete: Walkways, Accessible Ramps, and Pads to meet ADA requirements, see Sheet Nos. D1 and D2 for details. Adjusting, and upgrading work of existing concrete: Walkways, Accessible Ramps and Pads shall be considered part of Pedestrian Access Work and payment thereof will be considered as incidental to Concrete Pedestrian Access contract unit price.
- If an accessible ramp is not constructed according to plans, the Contractor shall reconstruct the accessible ramp at no cost to the State. Construction tolerance for Portland Cement Concrete shall be based on 1/4" per 10 ft. (+ 0.2%). Remedial measures will not be accepted.
- The Contractor shall submit a Site-specific Best Management Practice (BMPs) to the Engineer at least 14 days prior to the start of construction. The Contractor shall not begin construction until the BMPs are accepted by the Engineer. The cost of the BMP submittals shall not be paid for separately, but shall be considered incidental to the various contract items.

EMERGENCY TELEPHONE INSTALLATION SCHEDULE			
H-2 INBOUND			
LOCATION	INSTALLATION DETAILS		REMARKS
	POLE MOUNTING AND CALL BOX INSTALLATION	PEDESTRIAN ACCESS (WALKWAY/ACCESSIBLE RAMP/PAD)	
M.P. 0.3	Typical Installation, Sheet G1 Misc. Detail-1, Sheet D1	Misc. Detail-1, Sheet D1	
M.P. 1.0	Misc. Detail-2, Sheet D2	Misc. Detail-1, Sheet D1	
M.P. 1.7	Misc. Detail-3, Sheet D3	Misc. Detail-2, Sheet D2	
M.P. 2.2	Typical Installation, Sheet G1 Misc. Detail-1, Sheet D1	Misc. Detail-1, Sheet D1	
M.P. 2.7	Typical Installation, Sheet G1 Misc. Detail-1, Sheet D1	Misc. Detail-1, Sheet D1	
M.P. 3.3	Existing; Replace Call Box Unit	To Remain	See Note 11, Sheet G1
M.P. 3.95	Typical Installation, Sheet G1 Misc. Detail-1, Sheet D1	Misc. Detail-2, Sheet D2	
M.P. 4.5	Typical Installation, Sheet G1 Misc. Detail-1, Sheet D1	Misc. Detail-2, Sheet D2	
M.P. 4.95	Typical Installation, Sheet G1 Misc. Detail-1, Sheet D1	Misc. Detail-2, Sheet D2	
M.P. 5.5	Typical Installation, Sheet G1 Misc. Detail-1, Sheet D1	Misc. Detail-2, Sheet D2	
M.P. 6.05	Misc. Detail-2, Sheet D2	Misc. Detail-2, Sheet D2	
M.P. 6.45	Misc. Detail-2, Sheet D2	Misc. Detail-1, Sheet D1	
M.P. 7.0	Typical Installation, Sheet G1 Misc. Detail-1, Sheet D1	Misc. Detail-2, Sheet D2	
M.P. 7.5	Misc. Detail-2, Sheet D2	Misc. Detail-1, Sheet D1	
M.P. 8.0	Misc. Detail-2, Sheet D2	Misc. Detail-1, Sheet D1	

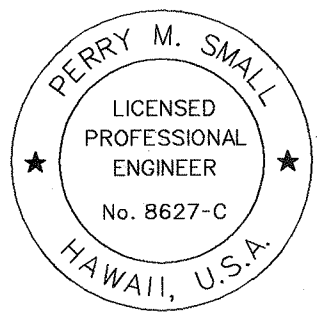
EMERGENCY TELEPHONE INSTALLATION SCHEDULE			
H-2 OUTBOUND			
LOCATION	INSTALLATION DETAILS		REMARKS
	POLE MOUNTING AND CALL BOX INSTALLATION	PEDESTRIAN ACCESS (WALKWAY/ACCESSIBLE RAMP/PAD)	
M.P. 0.7	Misc. Detail-2, Sheet D2	Misc. Detail-2, Sheet D2	
M.P. 1.2	Misc. Detail-3, Sheet D3	Misc. Detail-1, Sheet D1	
M.P. 1.7	Misc. Detail-2, Sheet D2	Misc. Detail-2, Sheet D2	
M.P. 2.25	Typical installation, Sheet G1 Misc. Detail-1, Sheet D1	Misc. Detail-1, Sheet D1	
M.P. 2.8	Typical installation, Sheet G1 Misc. Detail-1, Sheet D1	Misc. Detail-2, Sheet D2	
M.P. 3.0	Existing; Replace Call Box Unit	To Remain	See Note 11, Sheet G1
M.P. 3.5	Misc. Detail-2, Sheet D2	Misc. Detail-2, Sheet D2	
M.P. 3.9	Misc. Detail-2, Sheet D2	Misc. Detail-2, Sheet D2	
M.P. 4.5	Misc. Detail-2, Sheet D2	Misc. Detail-1, Sheet D1	
M.P. 5.05	Misc. Detail-3, Sheet D3	Misc. Detail-2, Sheet D2	
M.P. 5.7	Typical installation, Sheet G1 Misc. Detail-1, Sheet D1	Misc. Detail-1, Sheet D1	
M.P. 6.2	Misc. Detail-2, Sheet D2	Misc. Detail-1, Sheet D1	
M.P. 6.7	Misc. Detail-2, Sheet D2	Misc. Detail-1, Sheet D1	
M.P. 7.2	Typical installation, Sheet G1 Misc. Detail-1, Sheet D1	Misc. Detail-2, Sheet D2	
M.P. 7.7	Misc. Detail-2, Sheet D2	Misc. Detail-1, Sheet D1	
M.P. 8.1	Misc. Detail-2, Sheet D2	Misc. Detail-1, Sheet D1	



CALL BOX IDENTIFICATION SIGN
Not To Scale

NOTES:

- Lettering shall be centered and shall be 4" SERIES C letters.
- All signs shall have white reflector border and legend on a blue reflectorized background.



THIS WORK WAS PREPARED BY ME OR UNDER MY SUPERVISION.

Perry M. Small

NOTES:

- All lines of lettering shall be centered and shall be the following lettering size and series:
Line No. 1 - 2" SERIES C
Line No. 2 - 6" SERIES E
Line No. 3 - 6" SERIES E
- Call Box Identification Numbers shall be 4" SERIES D letters centered in the bottom position of the sign.
- All signs shall have white reflectorized border and legend on a blue reflectorized background.
- Modify hole locations to accommodate the 2' offset from edge of shoulder.

7/27/01	Added note 10 to General Notes. RE 4-inch bed course material.
Date	Revision
STATE OF HAWAII DEPARTMENT OF TRANSPORTATION HIGHWAYS DIVISION GENERAL NOTES, TYPICAL INSTALLATION & SIGN DETAILS INTERSTATE ROUTE H-2 INSTALLATION OF EMERGENCY TELEPHONES WAIANA INTERCHANGE TO WILKINA DRIVE FEDERAL AID INTERSTATE PROJECT NO. STP-H2-1(31) SCALE: NONE DATE: AUGUST, 2000	
SHEET No. G1 OF 1 SHEETS	