

FED. ROAD DIST. NO.	STATE	FED. AID PROJ. NO.	FISCAL YEAR	SHEET NO.	TOTAL SHEETS
HAWAII	HAW.	IM-H2-1(29)	1997	69	129

TRUE NORTH  
SCALE: 1" = 40'

Honolulu →

DI-1  
24" x 102"  
FOR DETAIL  
SEE SHT. V3

SPEED LIMIT  
25  
R2-1(25)A

MATCH LINE

R-1 STA 9+00  
SEE THIS SHT.

MATCH LINE  
26+50

MATCH LINE  
22+20  
SEE SHEET V3

MATCH LINE  
26+50

MATCH LINE  
STATE  
M.P.  
34+50  
CITY  
SEE SHEET V4

MATCH LINE

LEFT LANE  
MUST  
TURN LEFT  
R3-7  
30" x 30"

REFLECTOR MARKER  
MOUNTED ON FLEXIBLE  
POST (TYPICAL)

Mililani  
Mauka  
Mililani  
Town

DIR-1  
80.4" x 112.5"  
NOTE: IF WALL G IS CONSTRUCTED,  
RELOCATE SIGNAL TO R STA 4+00,  
RAMP R-1 (75' 4" RIGHT).  
MOUNTED ON WG x 12

ONLY  
R3-8  
30" x 30"

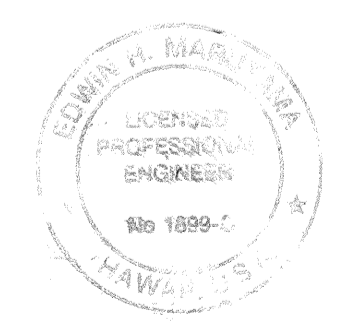
SIGNAL  
AHEAD  
W3-3  
36" x 36"  
24" x 18"  
RELOCATED

WIIA-2-A  
30" x 30"

WRONG  
WAY  
R5-1a  
36" x 24"

MEHEULA  
PARKWAY  
STREET SIGN #1  
THIS SIGN SHALL BE  
MOUNTED ON THE  
TRAFFIC LIGHT ARM.

APPROVED:  
*[Signature]*  
CHIEF, TRANSPORTATION MANAGEMENT DIVISION, D.T.S. DATE: 3/15/97  
(FOR CONSTRUCTION WITHIN CITY R/W ONLY)



THIS WORK WAS PREPARED BY  
AND IS UNDER MY SUPERVISION  
By: *[Signature]*

STATE OF HAWAII  
DEPARTMENT OF TRANSPORTATION  
HIGHWAYS DIVISION  
**SIGNING & PAVEMENT MARKINGS**  
INTERSTATE ROUTE H-2  
MILILANI INTERCHANGE  
SOUTHBOUND ON-AND-OFF-RAMPS  
F.A.I. Proj No. IM-H2-1(29)  
SCALE: 1" = 40' DATE: MAR. 1997  
SHEET No. VI OF 6 SHEETS

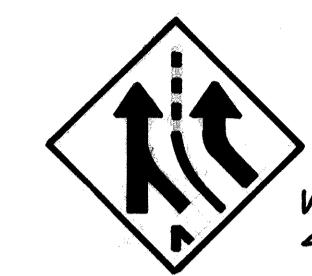
**SIGNING & PAVEMENT MARKINGS**

SCALE: 1" = 40'

"AS-BUILT" 69

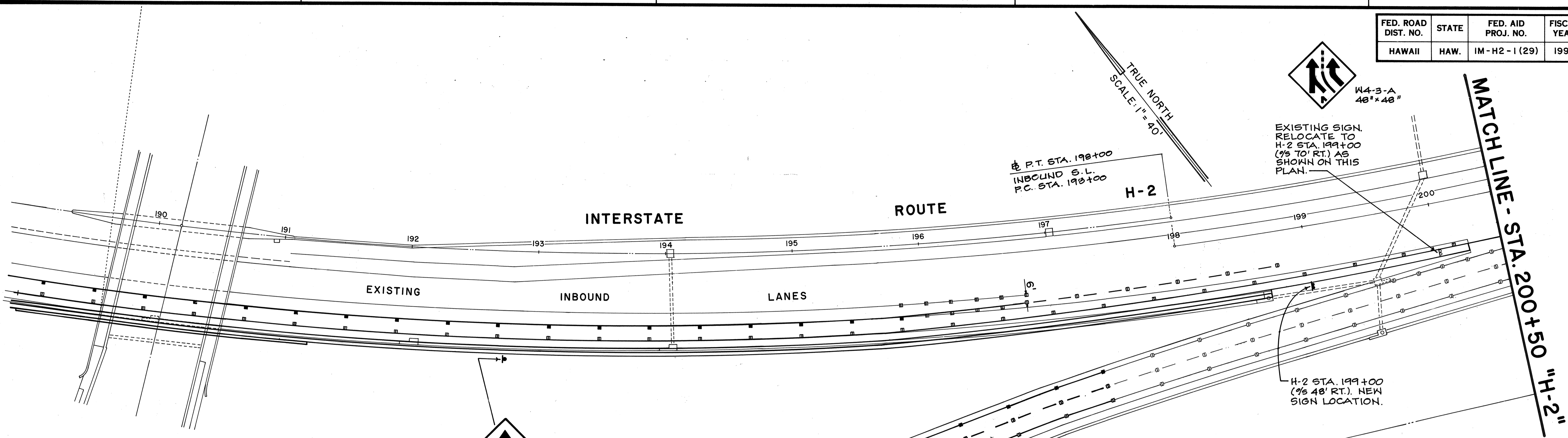
SURVEY PLOTTED BY	DATE
DRAWN BY	
DESIGNED BY	
QUANTITIES BY	
CHECKED BY	
ORIGINAL PLAN	
NOTE BOOK	
No.	

FED. ROAD DIST. NO.	STATE	FED. AID PROJ. NO.	FISCAL YEAR	SHEET NO.	TOTAL SHEETS
HAWAII	HAW.	IM-H2-1 (29)	1997	70	129



EXISTING SIGN RELOCATE TO H-2 STA. 199+00 (75 TO RT.) AS SHOWN ON THIS PLAN.

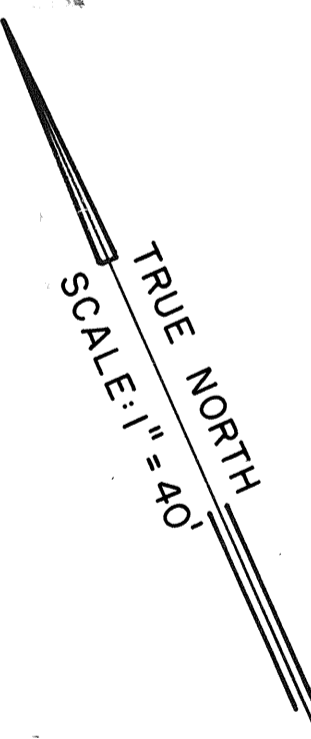
P.T. STA. 198+00  
INBOUND S.L.  
P.C. STA. 198+00



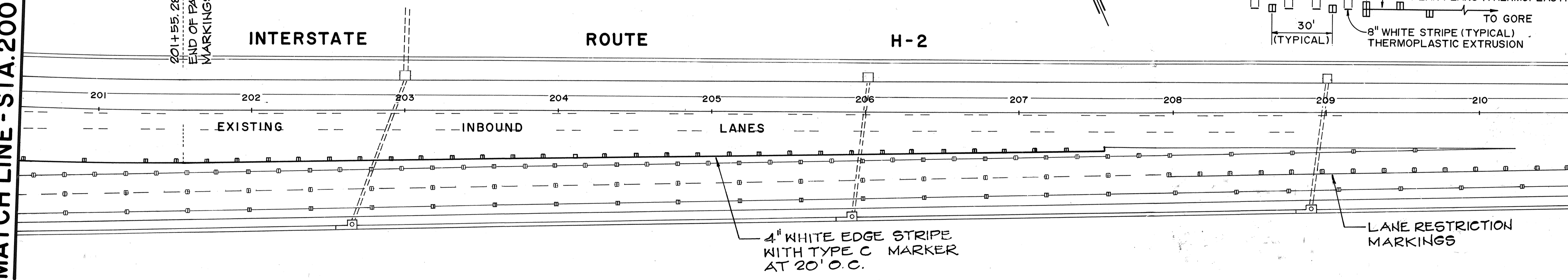
W4-1(R)A  
30' x 30'

**SIGNING AND PAVEMENT MARKINGS LEGEND**

- 4" WHITE EDGE STRIPE WITH TYPE C MARKERS AT 40' o.c.
- 8" WHITE STRIPE
- 8" WHITE STRIPE WITH TYPE C MARKERS AT 20' o.c.
- 4" YELLOW STRIPE WITH TYPE H MARKERS AT 40' o.c.
- 4" DOUBLE YELLOW STRIPE WITH TYPE D MARKERS AT 20' o.c.
- 4 TYPE A MARKERS AND TYPE C MARKERS AT 40' o.c.
- 4" WHITE STRIPE, 2'-0" LONG, WITH TYPE C MARKERS AT 40' o.c.
- 12" STOP LINE
- 4" WHITE INTERSECTION GUIDE LINE (UNLESS SHOWN OTHERWISE)
- 8" SOLID WHITE STRIPE W/TYPE "C" MARKERS AT 20' o.c. AS SHOWN ON PLAN PLANS (THERMOPLASTIC EXTRUSION)
- 8" WHITE STRIPE (TYPICAL) THERMOPLASTIC EXTRUSION
- NEW OR RELOCATED SIGN
- EXISTING SIGN
- STANDARD PAVEMENT ARROWS
- ONLY PAVEMENT WORD
- CROSSWALK AND 12" STOP LINE
- REFLECTOR MARKER, RM-2, MOUNTED ON FLEXIBLE DELINEATOR POST
- REMOVE EXISTING PAVEMENT MARKING



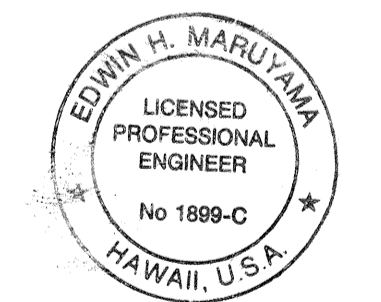
MATCH LINE - STA. 200+50 "H-2"



201+55 TO H-2  
END OF PAVEMENT  
MARKINGS

4" WHITE EDGE STRIPE WITH TYPE C MARKER AT 20' O.C.

LANE RESTRICTION MARKINGS



THIS WORK WAS PREPARED BY ME OR UNDER MY SUPERVISION  
By: *Edwin H. Maruyama*  
FUJITA & ASSOCIATES

STATE OF HAWAII  
DEPARTMENT OF TRANSPORTATION  
HIGHWAYS DIVISION

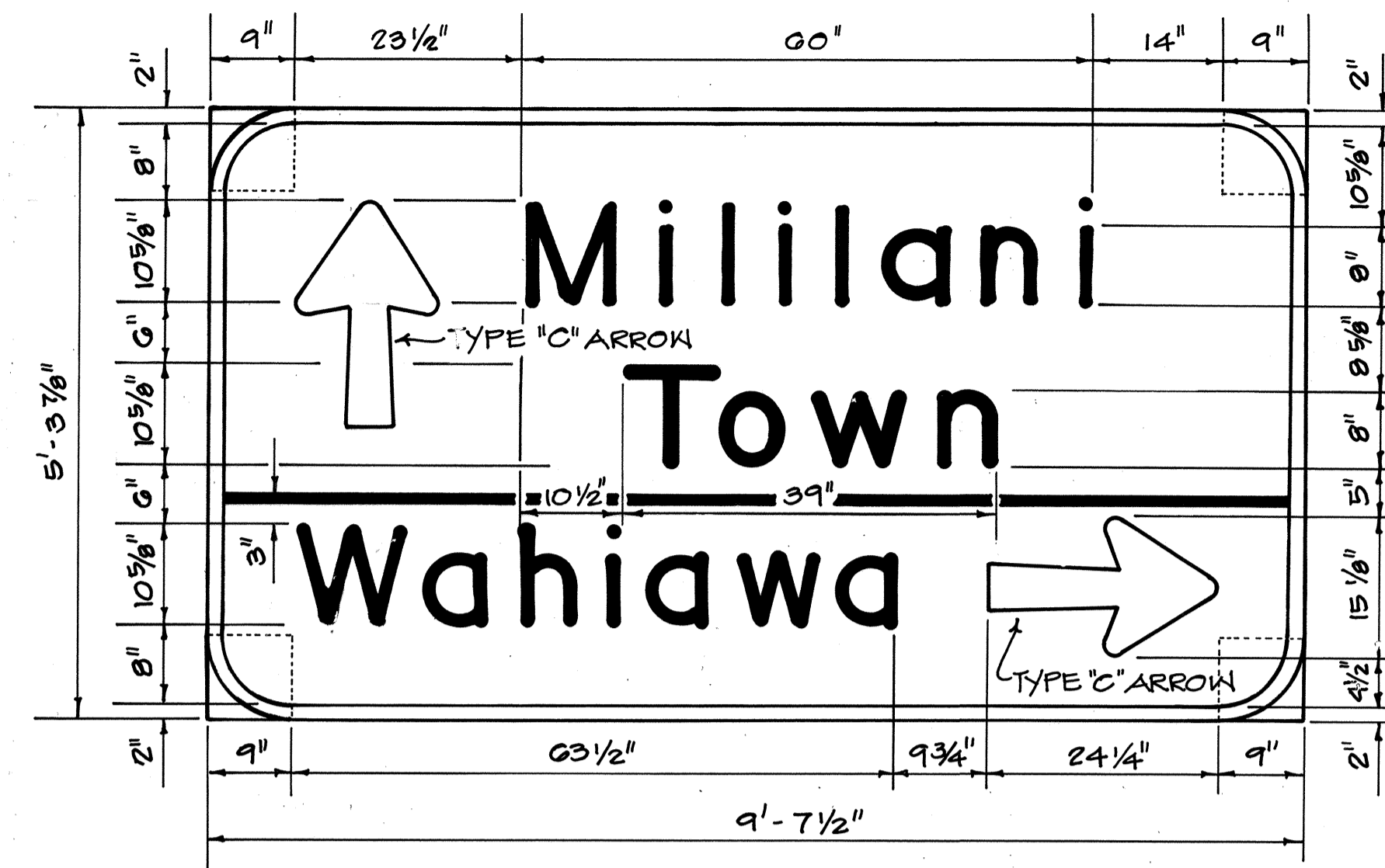
**SIGNING & PAVEMENT MARKINGS**

INTERSTATE ROUTE H-2  
MILILANI INTERCHANGE  
SOUTHBOUND ON-AND-OFF-RAMPS  
F.A.I. Proj. No. IM-H2-1 (29)

SCALE: 1" = 40' DATE: MAR. 1997  
SHEET No. V2 OF 6 SHEETS

ORIGINAL PLAN	DATE
SURVEY PLOTTED BY	
DRAWN BY	
DESIGNED BY	
QUANTITIES BY	
CHECKED BY	
NO.	

FED. ROAD DIST. NO.	STATE	FED. AID PROJ. NO.	FISCAL YEAR	SHEET NO.	TOTAL SHEETS
HAWAII	HAW.	IM-H2-1(29)	1997	71	129

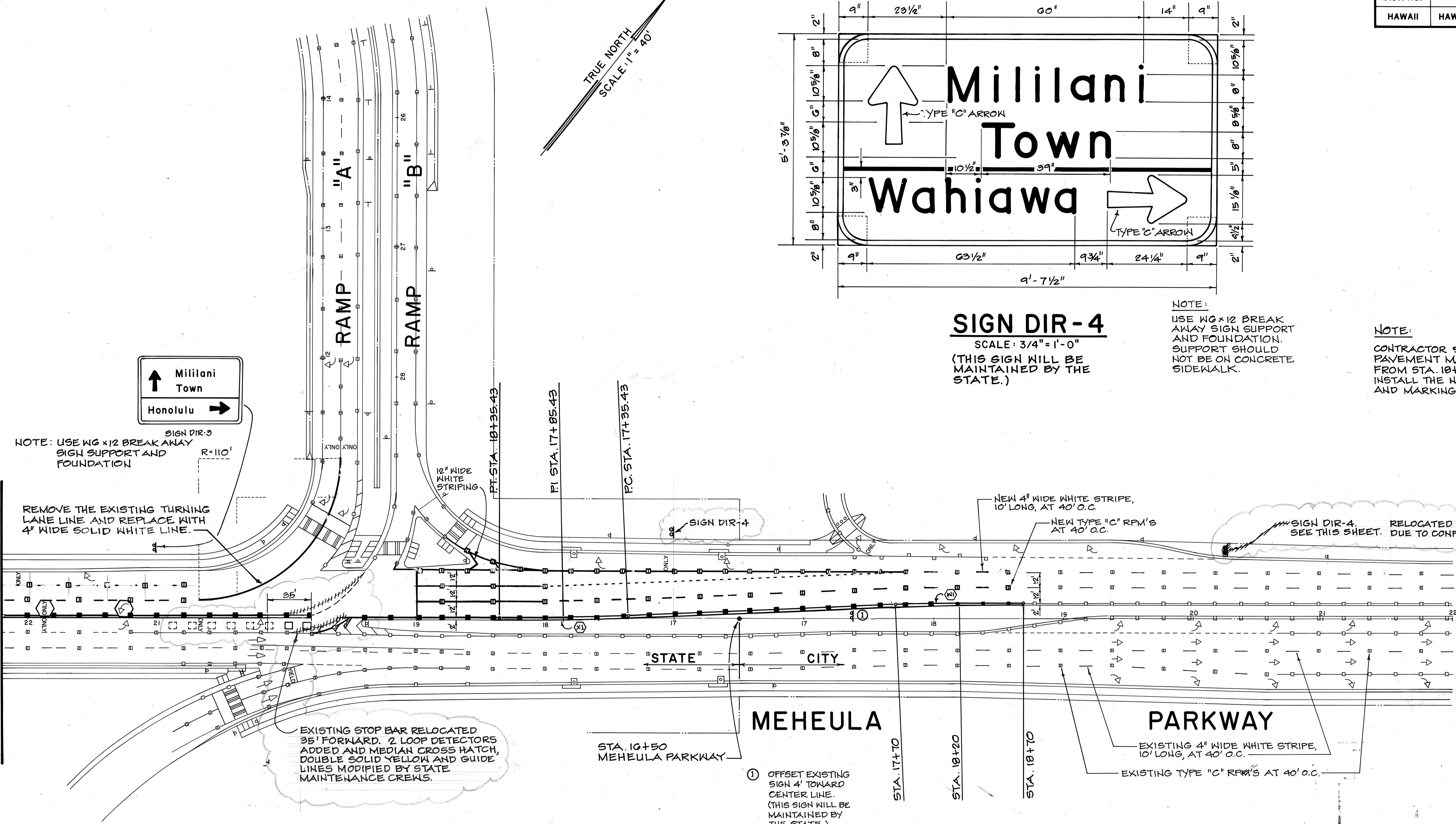


**SIGN DIR-4**  
SCALE: 3/4" = 1'-0"  
(THIS SIGN WILL BE MAINTAINED BY THE STATE.)

NOTE:  
USE WG x 12 BREAK AWAY SIGN SUPPORT AND FOUNDATION. SUPPORT SHOULD NOT BE ON CONCRETE SIDEWALK.

NOTE:  
CONTRACTOR SHALL REMOVE ALL EXISTING PAVEMENT MARKERS, STRIPING AND MARKINGS FROM STA. 18+70 (CITY) TO 22+20 (STATE) AND INSTALL THE NEW PAVEMENT MARKERS, STRIPING AND MARKINGS AS SHOWN.

MATCH LINE - STA. 22+20  
SEE SHEET VI



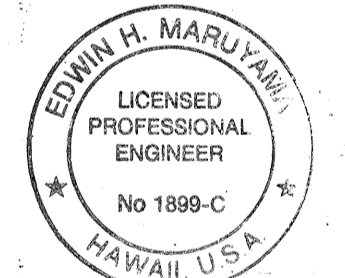
**SIGNING AND PAVEMENT MARKINGS**

SCALE: 1" = 40'

	(W1)	(X1)
Δ	2° 15' 00"	2° 15' 00"
Δ/2	1° 07' 30"	1° 07' 30"
R	2540.48'	2544.48'
T	50.05'	49.97'
C	100.07'	99.92'
Lc	100.08'	99.92'

APPROVED:

*Paul Kaul*  
CHIEF, TRANSPORTATION MANAGEMENT DIVISION, D.T.S. DATE 3/18/92  
(FOR CONSTRUCTION WITHIN CITY R/W ONLY)



THIS WORK WAS PREPARED BY ME OR UNDER MY SUPERVISION  
By *Edwin H. Maru*  
RUITA & ASSOCIATES

STATE OF HAWAII  
DEPARTMENT OF TRANSPORTATION  
HIGHWAYS DIVISION

**SIGNING & PAVEMENT MARKINGS**

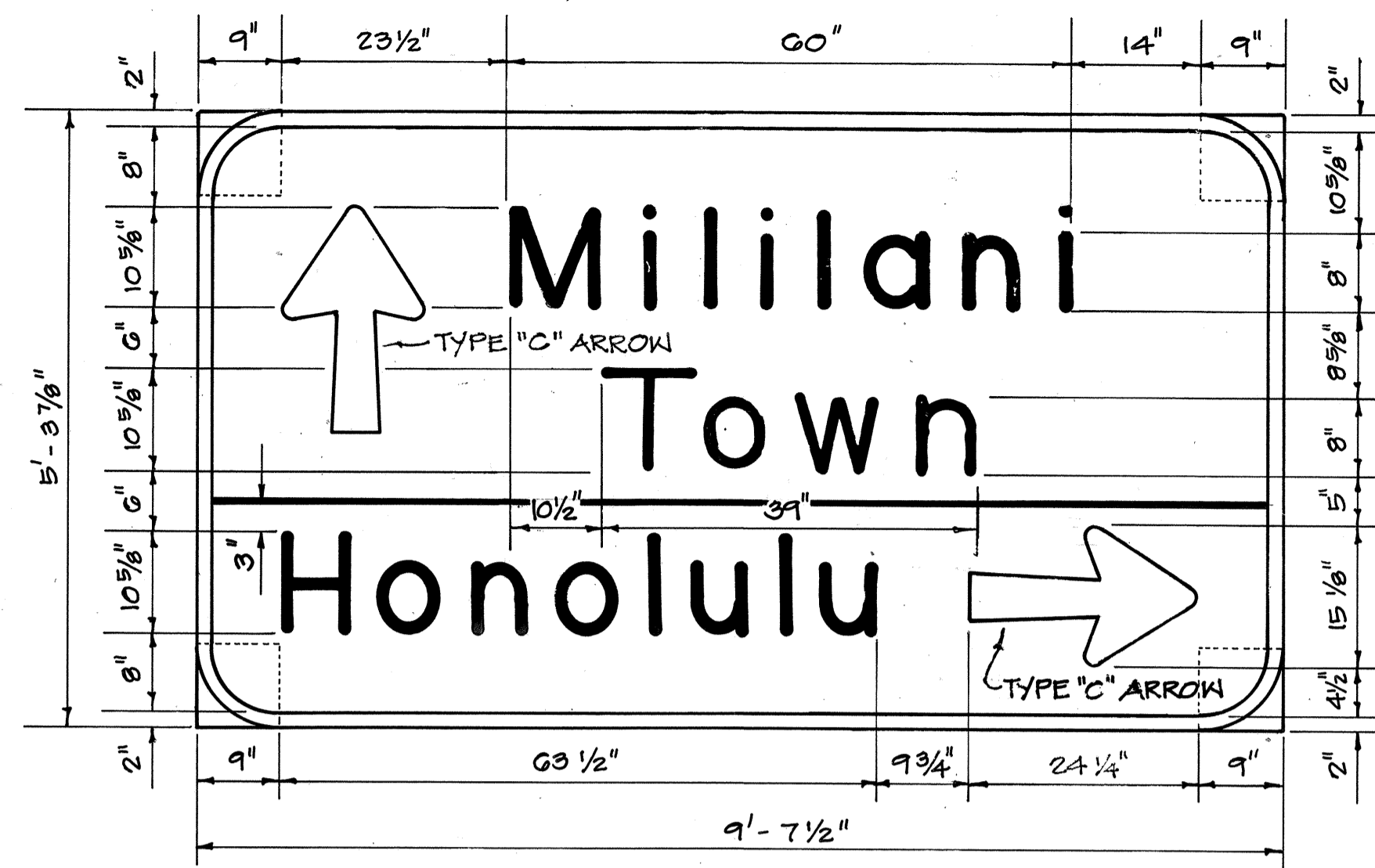
INTERSTATE ROUTE H-2  
MILILANI INTERCHANGE  
SOUTHBOUND ON-AND-OFF-RAMPS  
F.A.I. Proj. No. IM-H2-1 (29)

SCALE: 1" = 40' DATE: MAR. 1997

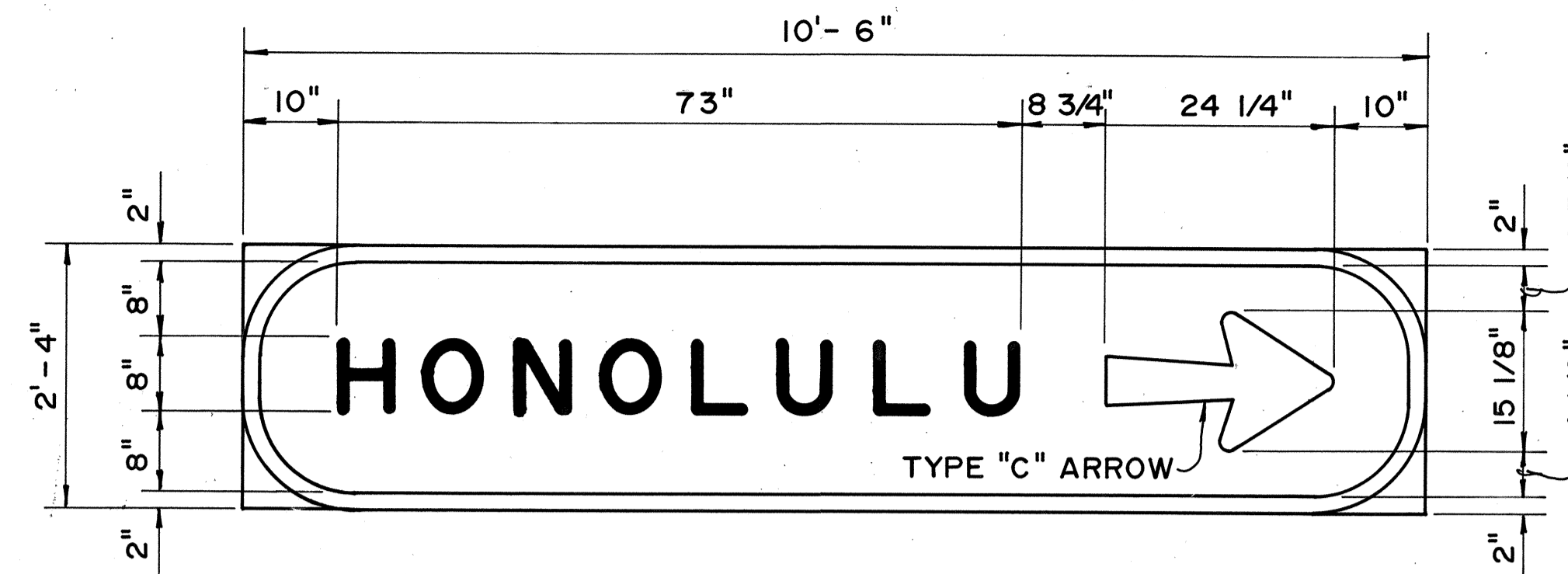
SHEET No. V3 OF 6 SHEETS

SURVEY PLOTTED BY: \_\_\_\_\_ DATE: \_\_\_\_\_  
 DRAWN BY: \_\_\_\_\_  
 DESIGNED BY: \_\_\_\_\_  
 CHECKED BY: \_\_\_\_\_  
 NOTE BOOK NO.: \_\_\_\_\_

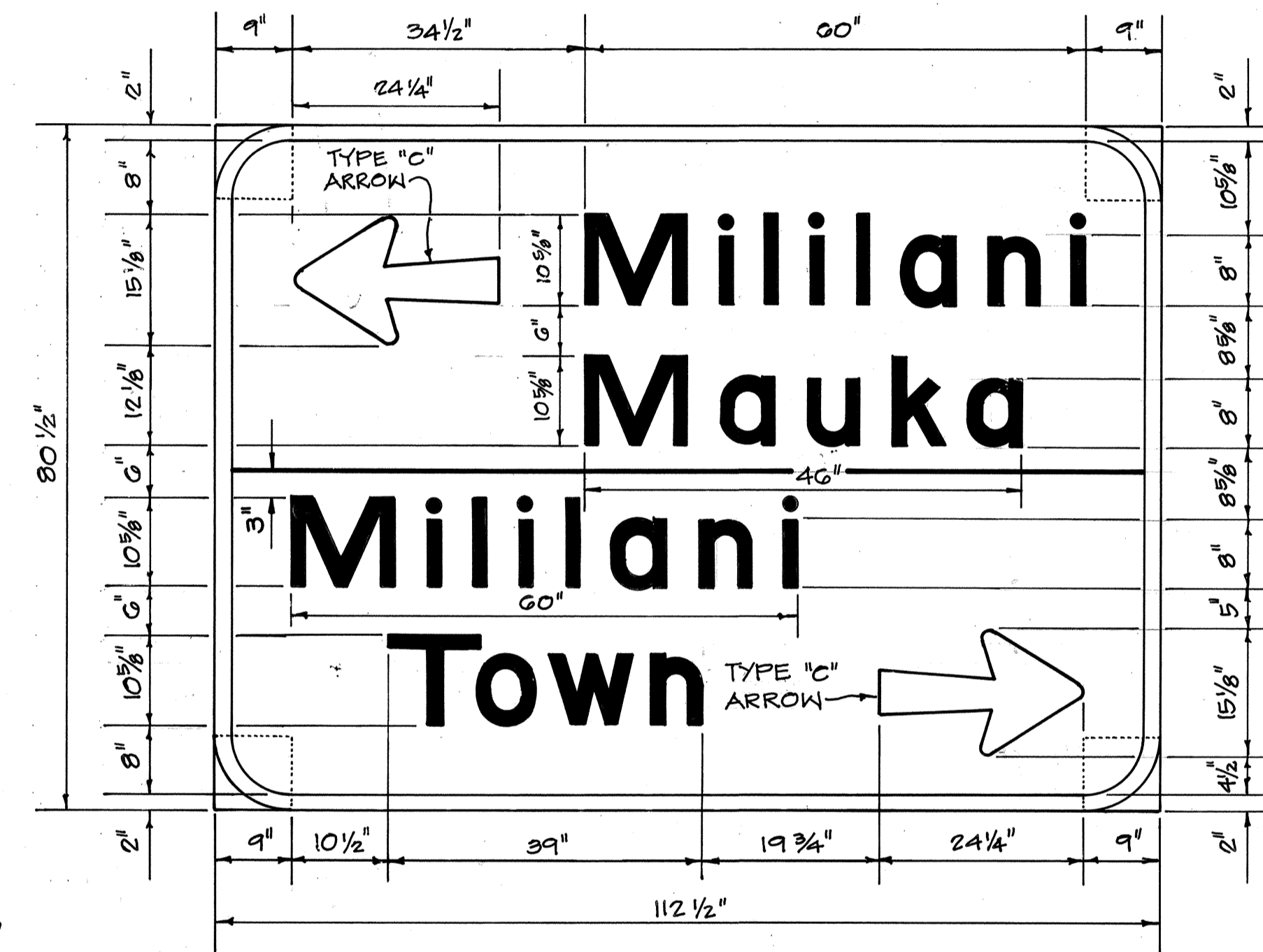
FED. ROAD DIST. NO.	STATE	FED. AID PROJ. NO.	FISCAL YEAR	SHEET NO.	TOTAL SHEETS
HAWAII	HAW.	IM-H2-1(29)	1997	72	129



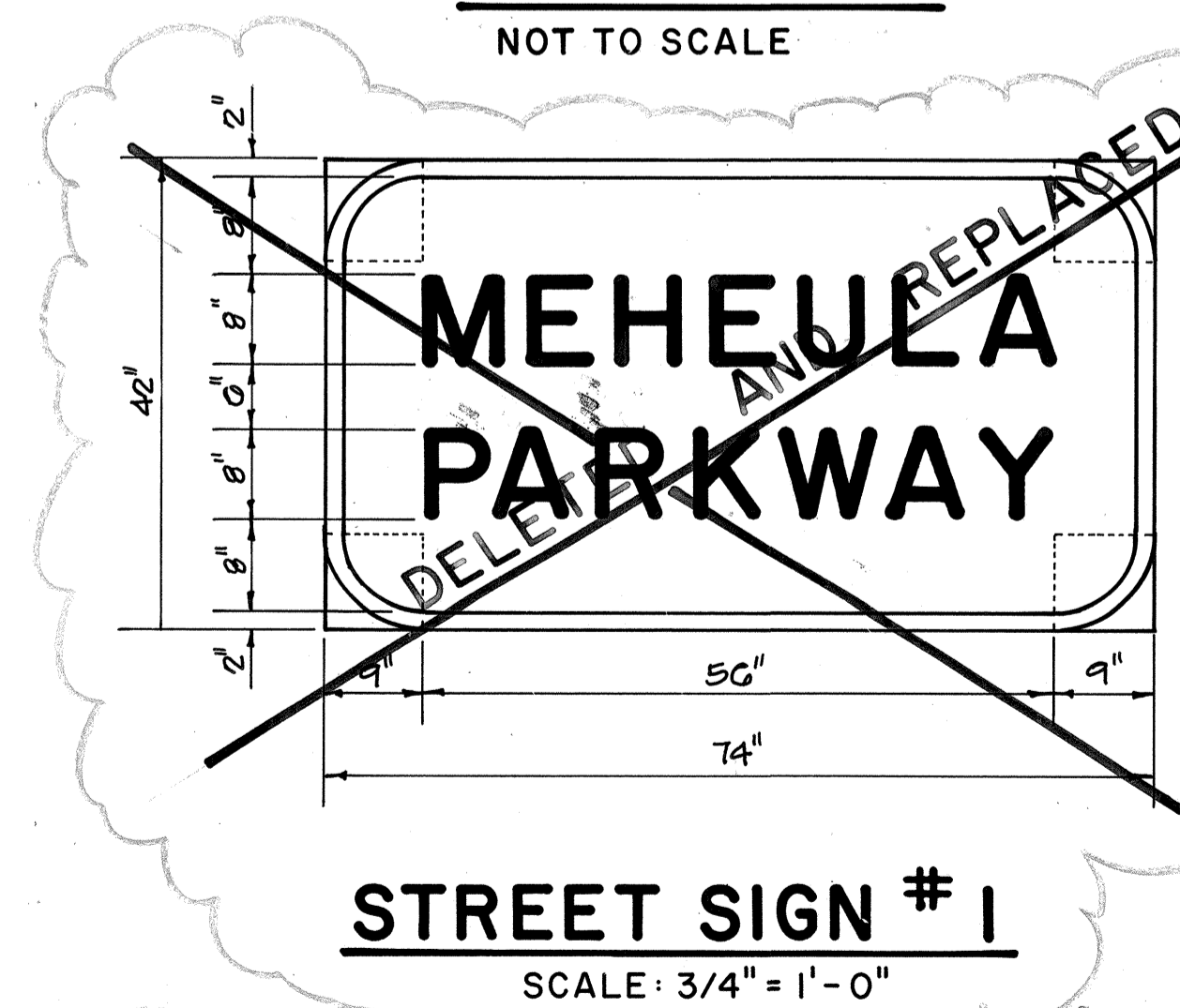
**SIGN DIR-3**  
SCALE: 3/4" = 1'-0"



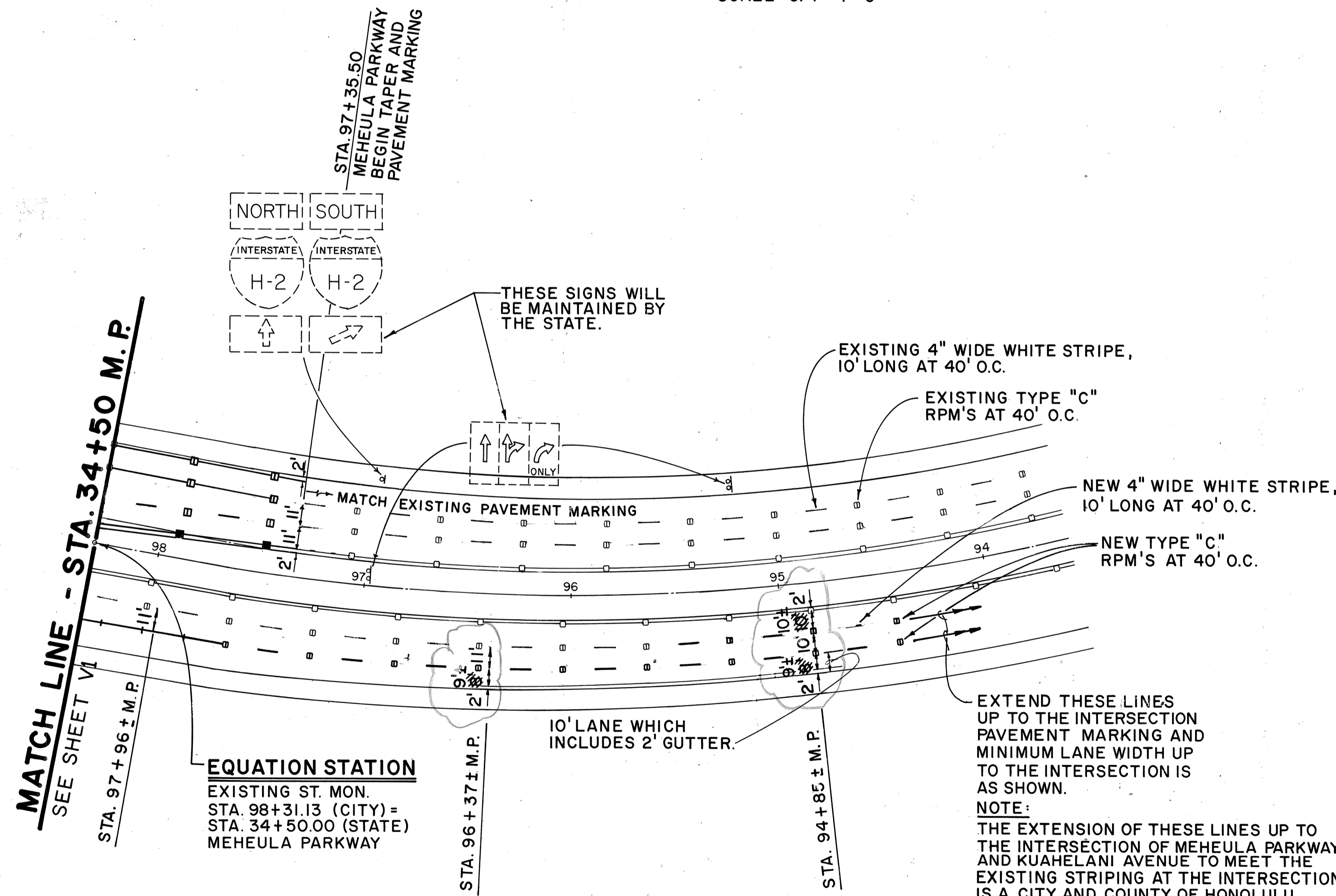
**SIGN DIR-2**  
SCALE: 3/4" = 1'-0"



**SIGN DIR-1**  
NOT TO SCALE

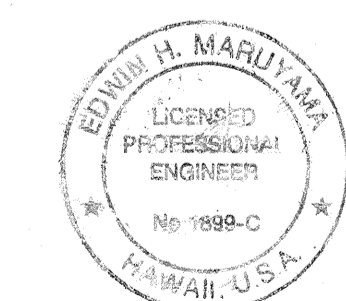
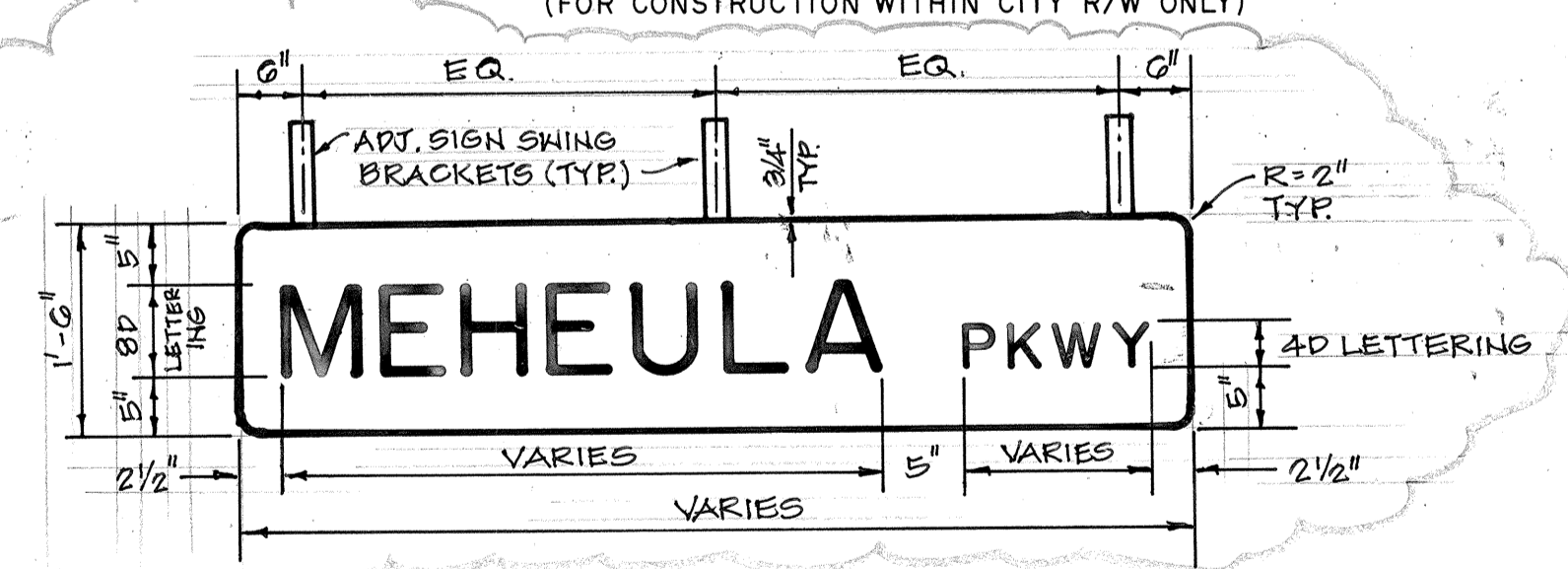


**STREET SIGN #1**  
SCALE: 3/4" = 1'-0"



**SIGNING & PAVEMENT MARKINGS**  
SCALE: 1" = 40'

APPROVED:  
*R.T. Kanda*  
CHIEF, TRANSPORTATION MANAGEMENT DIVISION, D.T.S. DATE 3/18/96  
(FOR CONSTRUCTION WITHIN CITY R/W ONLY)



THIS WORK WAS PREPARED BY ME OR UNDER MY SUPERVISION  
By: *Edwin H. Maruyama*  
PUNTA & ASSOCIATES

STATE OF HAWAII  
DEPARTMENT OF TRANSPORTATION  
HIGHWAYS DIVISION  
**SIGNING & PAVEMENT MARKINGS**  
INTERSTATE ROUTE H-2  
MILILANI INTERCHANGE  
SOUTHBOUND ON-AND-OFF-RAMPS  
F.A.I. Proj. No. IM-H2-1 (29)  
SCALE: AS NOTED DATE: MAR. 1997  
SHEET No. V4 OF 6 SHEETS

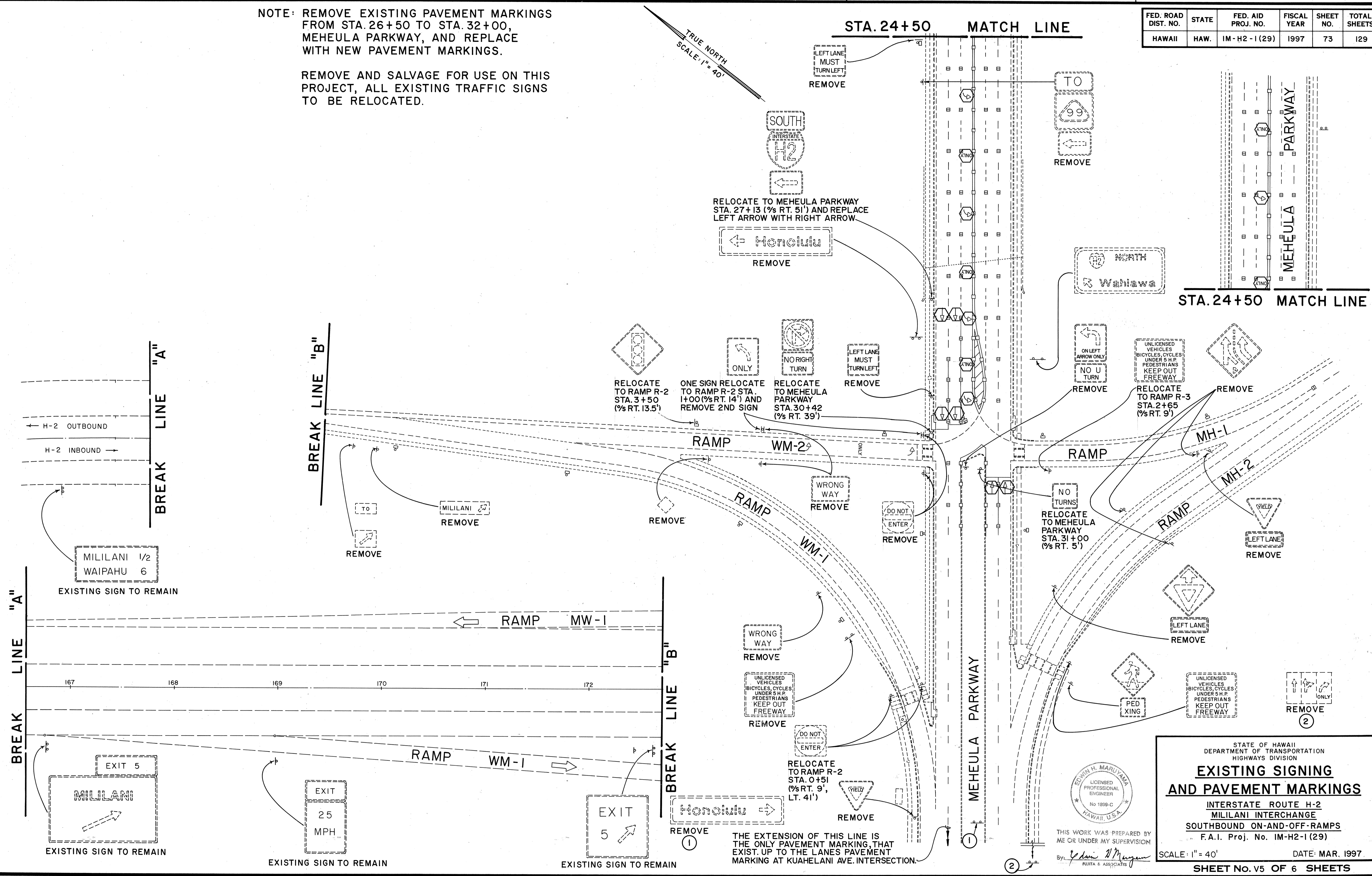
SURVEY PLOTTED BY	DATE
DRAWN BY	
DESIGNED BY	
CHECKED BY	
NOTE BOOK NO.	

NOTE: REMOVE EXISTING PAVEMENT MARKINGS FROM STA. 26+50 TO STA. 32+00, MEHEULA PARKWAY, AND REPLACE WITH NEW PAVEMENT MARKINGS.

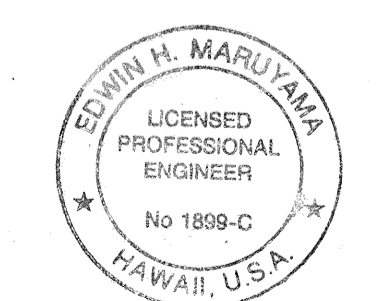
REMOVE AND SALVAGE FOR USE ON THIS PROJECT, ALL EXISTING TRAFFIC SIGNS TO BE RELOCATED.

FED. ROAD DIST. NO.	STATE	FED. AID PROJ. NO.	FISCAL YEAR	SHEET NO.	TOTAL SHEETS
HAWAII	HAW.	IM-H2-1(29)	1997	73	129

TRUE NORTH  
SCALE: 1" = 40'



DATE: \_\_\_\_\_  
 SURVEY PLOTTED BY: \_\_\_\_\_  
 ORIGINAL PLAN: \_\_\_\_\_  
 DRAWN BY: \_\_\_\_\_  
 TRACED BY: \_\_\_\_\_  
 NOTE BOOK: \_\_\_\_\_  
 DESIGNED BY: \_\_\_\_\_  
 CHECKED BY: \_\_\_\_\_  
 No. \_\_\_\_\_



THIS WORK WAS PREPARED BY ME OR UNDER MY SUPERVISION  
 By: *Edwin H. Maruyama*  
 FUJITA & ASSOCIATES

STATE OF HAWAII  
 DEPARTMENT OF TRANSPORTATION  
 HIGHWAYS DIVISION

**EXISTING SIGNING AND PAVEMENT MARKINGS**

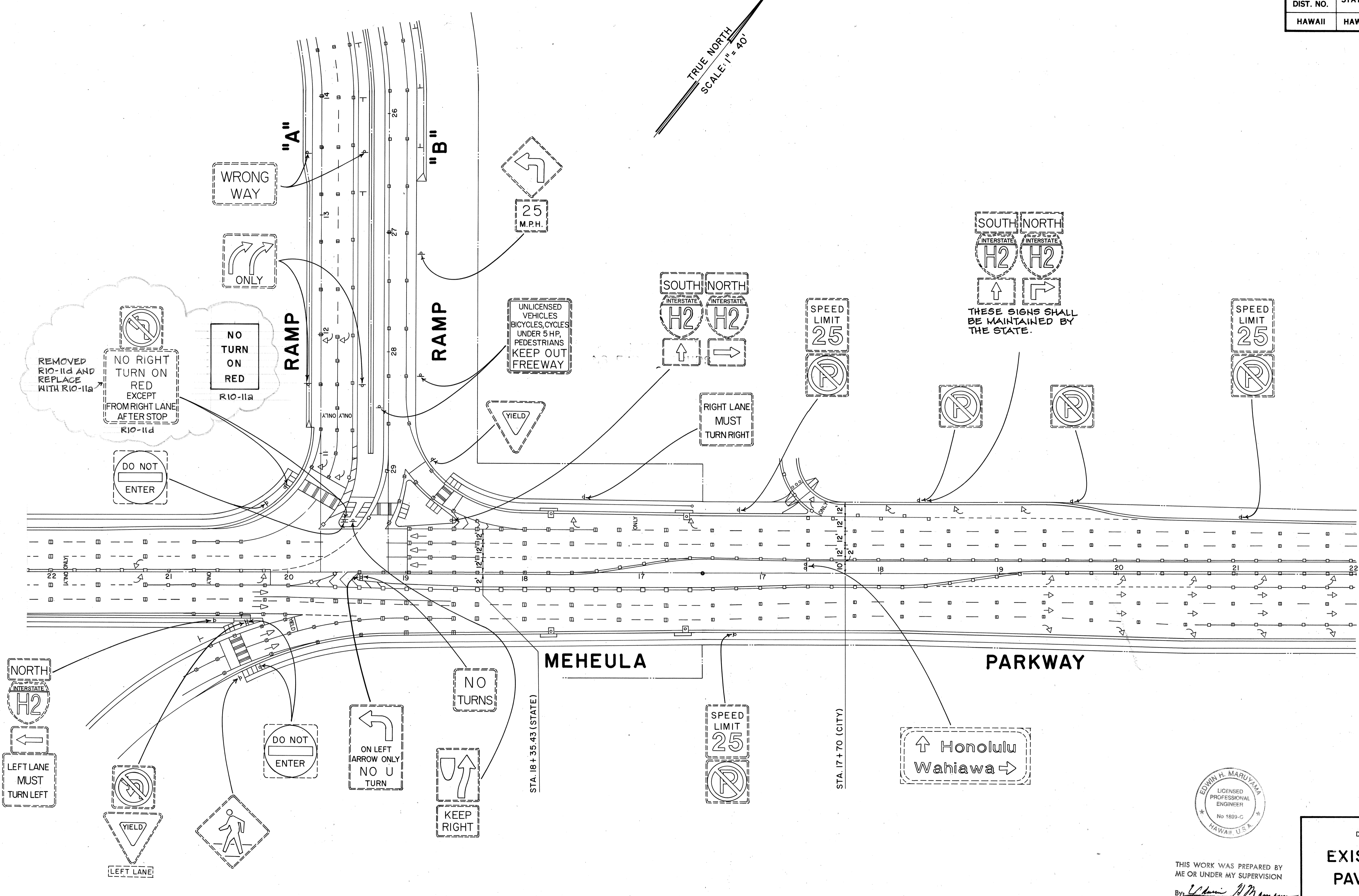
INTERSTATE ROUTE H-2  
 MILILANI INTERCHANGE  
 SOUTHBOUND ON-AND-OFF-RAMPS  
 F.A.I. Proj. No. IM-H2-1(29)

SCALE: 1" = 40' DATE: MAR. 1997

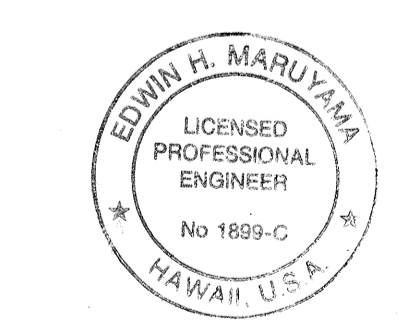
SHEET No. V5 OF 6 SHEETS

FED. ROAD DIST. NO.	STATE	FED. AID PROJ. NO.	FISCAL YEAR	SHEET NO.	TOTAL SHEETS
HAWAII	HAW.	IM-H2-1(29)	1997	74	129

TRUE NORTH  
SCALE: 1" = 40'



DATE	_____
SURVEY PLOTTED BY	_____
DRAWN BY	_____
TRACED BY	_____
DESIGNED BY	_____
CHECKED BY	_____
NO.	_____



THIS WORK WAS PREPARED BY ME OR UNDER MY SUPERVISION  
By: *Edwin H. Maruyama*  
FUJITA & ASSOCIATES

STATE OF HAWAII  
DEPARTMENT OF TRANSPORTATION  
HIGHWAYS DIVISION

**EXISTING SIGNING AND PAVEMENT MARKINGS**

INTERSTATE ROUTE H-2  
MILILANI INTERCHANGE  
SOUTHBOUND ON-AND-OFF-RAMPS  
F.A.I. Proj. No. IM-H2-1 (29)

SCALE: 1" = 40' DATE: MAR. 1997  
SHEET No. V6 OF 6 SHEETS