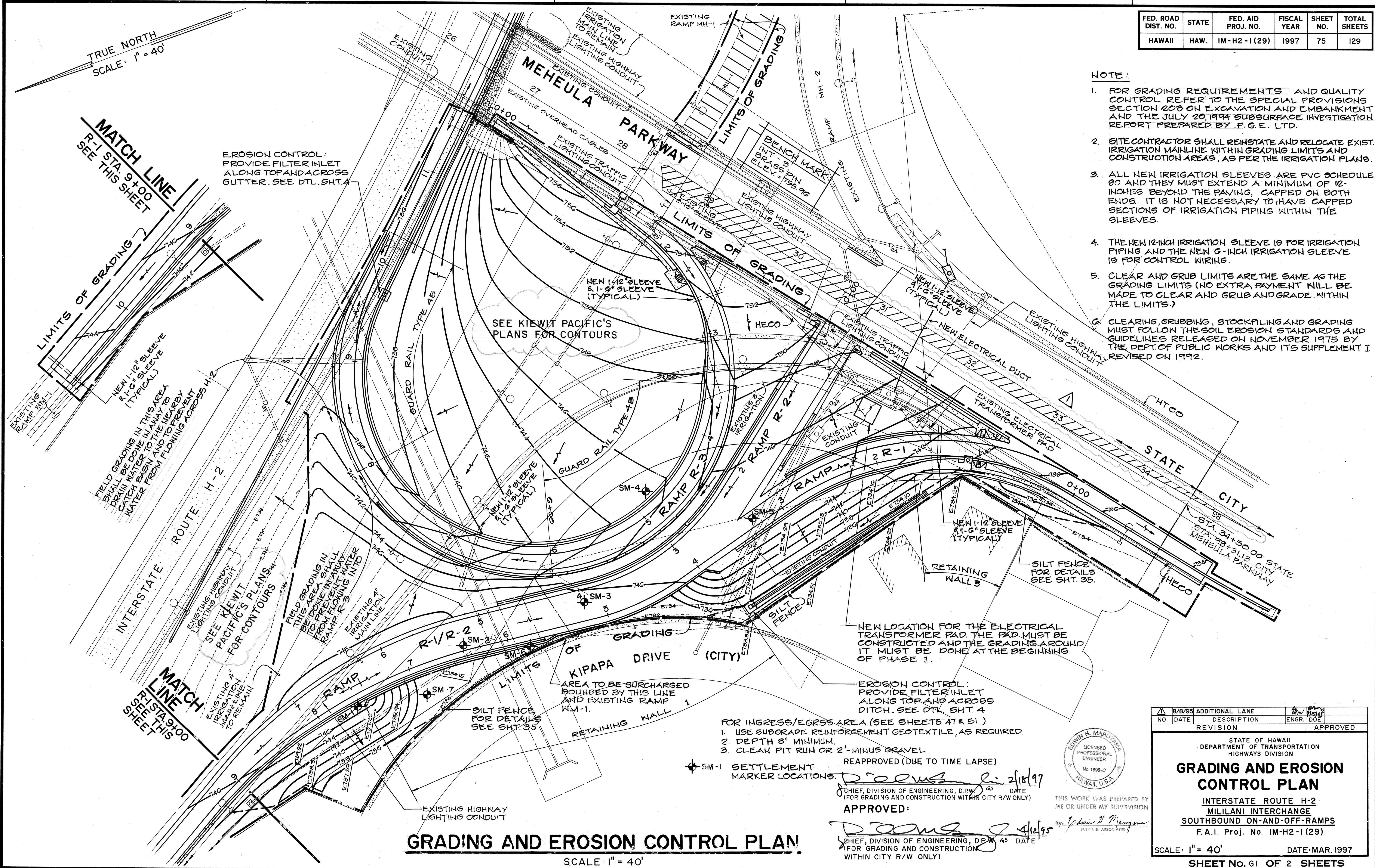


FED. ROAD DIST. NO.	STATE	FED. AID PROJ. NO.	FISCAL YEAR	SHEET NO.	TOTAL SHEETS
HAWAII	HAW.	IM-H2-1(29)	1997	75	129

- NOTE:**
- FOR GRADING REQUIREMENTS AND QUALITY CONTROL REFER TO THE SPECIAL PROVISIONS SECTION 203 ON EXCAVATION AND EMBANKMENT AND THE JULY 20, 1994 SUBSURFACE INVESTIGATION REPORT PREPARED BY F.G.E. LTD.
 - SITE CONTRACTOR SHALL REINSTATE AND RELOCATE EXIST. IRRIGATION MAINLINE WITHIN GRADING LIMITS AND CONSTRUCTION AREAS, AS PER THE IRRIGATION PLANS.
 - ALL NEW IRRIGATION SLEEVES ARE PVC SCHEDULE 80 AND THEY MUST EXTEND A MINIMUM OF 12-INCHES BEYOND THE PAVING, CAPPED ON BOTH ENDS. IT IS NOT NECESSARY TO HAVE CAPPED SECTIONS OF IRRIGATION PIPING WITHIN THE SLEEVES.
 - THE NEW 12-INCH IRRIGATION SLEEVE IS FOR IRRIGATION PIPING AND THE NEW 6-INCH IRRIGATION SLEEVE IS FOR CONTROL WIRING.
 - CLEAR AND GRUB LIMITS ARE THE SAME AS THE GRADING LIMITS (NO EXTRA PAYMENT WILL BE MADE TO CLEAR AND GRUB AND GRADE WITHIN THE LIMITS.)
 - CLEARING, GRUBBING, STOCKPILING AND GRADING MUST FOLLOW THE SOIL EROSION STANDARDS AND GUIDELINES RELEASED ON NOVEMBER 1975 BY THE DEPT. OF PUBLIC WORKS AND ITS SUPPLEMENT I REVISED ON 1992.



SURVEY PLOTTED BY	DATE
DRAWN BY	
DESIGNED BY	
QUANTITIES BY	
CHECKED BY	
ORIGINAL PLAN	
NOTE BOOK	
NO.	

GRADING AND EROSION CONTROL PLAN SCALE 1" = 40'

- FOR INGRESS/EGRESS AREA (SEE SHEETS A7 & B1)
- USE SUBGRADE REINFORCEMENT GEOTEXTILE, AS REQUIRED
 - DEPTH 8" MINIMUM.
 - CLEAN PIT RUN OR 2'-MINUS GRAVEL

SM-1 SETTLEMENT MARKER LOCATIONS

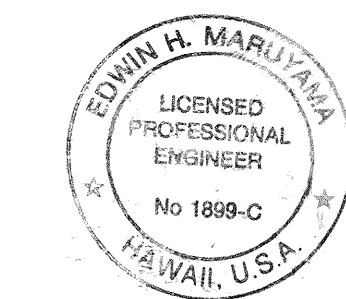
REAPPROVED (DUE TO TIME LAPSE)

APPROVED: *[Signature]* 2/18/97

CHIEF, DIVISION OF ENGINEERING, D.P.W. DATE (FOR GRADING AND CONSTRUCTION WITHIN CITY R/W ONLY)

APPROVED: *[Signature]* 4/12/95

CHIEF, DIVISION OF ENGINEERING, D.P.W. DATE (FOR GRADING AND CONSTRUCTION WITHIN CITY R/W ONLY)



THIS WORK WAS PREPARED BY ME OR UNDER MY SUPERVISION

By: *[Signature]* FUJITA & ASSOCIATES

8/8/96	ADDITIONAL LANE	DATE	DESCRIPTION	ENGR. DOE	APPROVED
REVISION					

STATE OF HAWAII
DEPARTMENT OF TRANSPORTATION
HIGHWAYS DIVISION

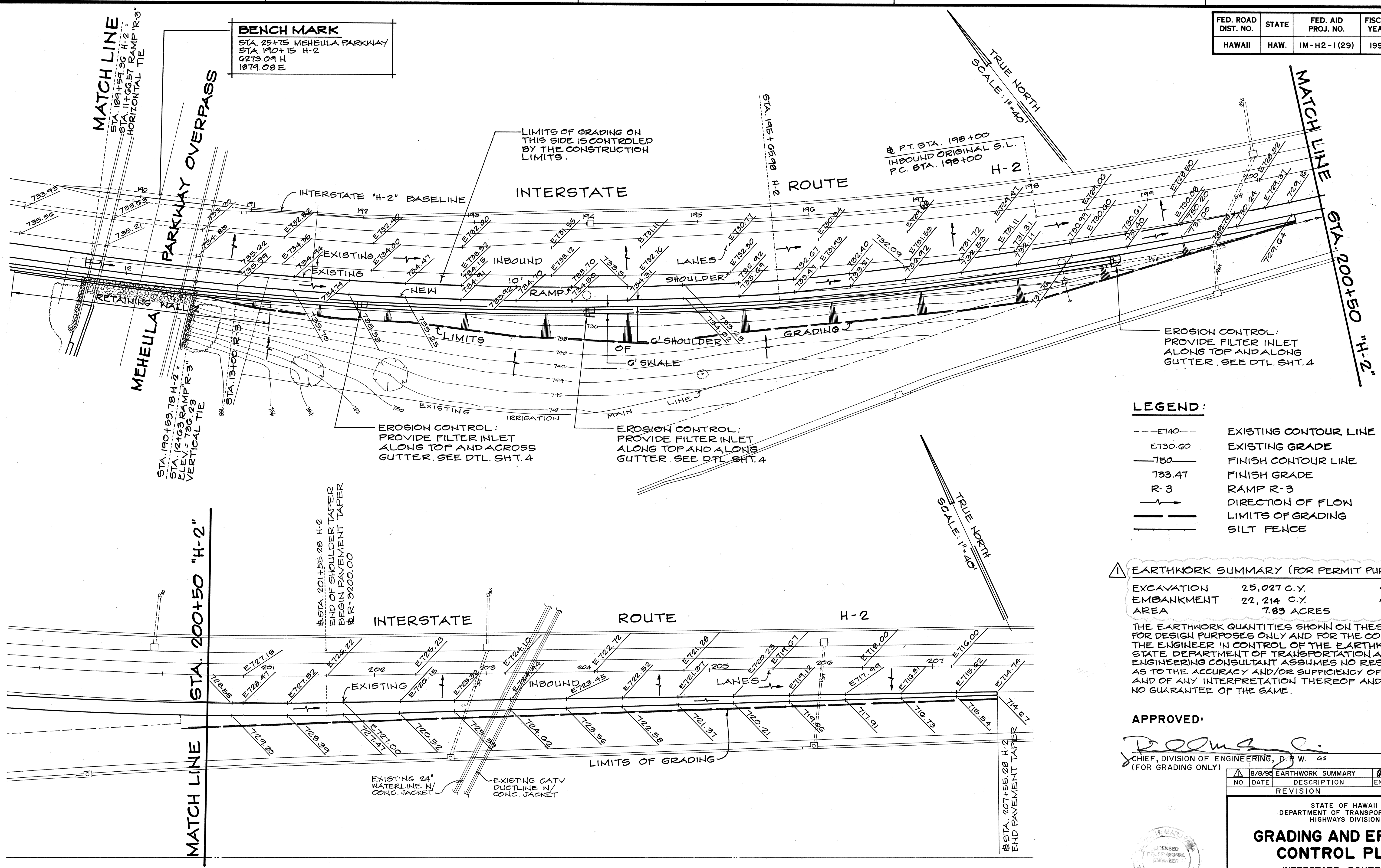
GRADING AND EROSION CONTROL PLAN

INTERSTATE ROUTE H-2
MILILANI INTERCHANGE
SOUTHBOUND ON-AND-OFF-RAMPS
F.A.I. Proj. No. IM-H2-1(29)

SCALE: 1" = 40' DATE: MAR. 1997

SHEET No. 61 OF 2 SHEETS

FED. ROAD DIST. NO.	STATE	FED. AID PROJ. NO.	FISCAL YEAR	SHEET NO.	TOTAL SHEETS
HAWAII	HAW.	IM-H2-1 (29)	1997	76	129



- LEGEND:**
- E740--- EXISTING CONTOUR LINE
 - E730.60 EXISTING GRADE
 - 750--- FINISH CONTOUR LINE
 - 733.47 FINISH GRADE
 - R-3 RAMP R-3
 - DIRECTION OF FLOW
 - LIMITS OF GRADING
 - SILT FENCE

EARTHWORK SUMMARY (FOR PERMIT PURPOSES ONLY)

EXCAVATION	25,027 C.Y.	27,486 C.Y.
EMBANKMENT	22,214 C.Y.	21,982 C.Y.
AREA	7.83 ACRES	8.07 ACRES

THE EARTHWORK QUANTITIES SHOWN ON THESE PLANS ARE FOR DESIGN PURPOSES ONLY AND FOR THE CONVENIENCE OF THE ENGINEER IN CONTROL OF THE EARTHWORK. THE STATE DEPARTMENT OF TRANSPORTATION AND THE DESIGN ENGINEERING CONSULTANT ASSUMES NO RESPONSIBILITY AS TO THE ACCURACY AND/OR SUFFICIENCY OF THE QUANTITIES AND OF ANY INTERPRETATION THEREOF AND WILL MAKE NO GUARANTEE OF THE SAME.

APPROVED:

[Signature] 4/12/95
 CHIEF, DIVISION OF ENGINEERING, D.P.W. GS DATE
 (FOR GRADING ONLY)

STATE OF HAWAII DEPARTMENT OF TRANSPORTATION HIGHWAYS DIVISION			
GRADING AND EROSION CONTROL PLAN			
INTERSTATE ROUTE H-2 MILILANI INTERCHANGE SOUTHBOUND ON-AND-OFF-RAMPS F.A.I. Proj. No. IM-H2-1 (29)			
SCALE: 1" = 40'		DATE: MAR. 1997	
SHEET No. 62 OF 2 SHEETS			

GRADING AND EROSION CONTROL PLAN SCALE: 1" = 40'

REAPPROVED (DUE TO TIME LAPSE)

[Signature] 2/18/97
 CHIEF, DIVISION OF ENGINEERING, D.P.W. GS DATE
 (FOR GRADING ONLY)

ORIGINAL PLAN	DATE
DRAWN BY	
CHECKED BY	
DESIGNED BY	
QUANTITIES BY	
CHECKED BY	
NO.	