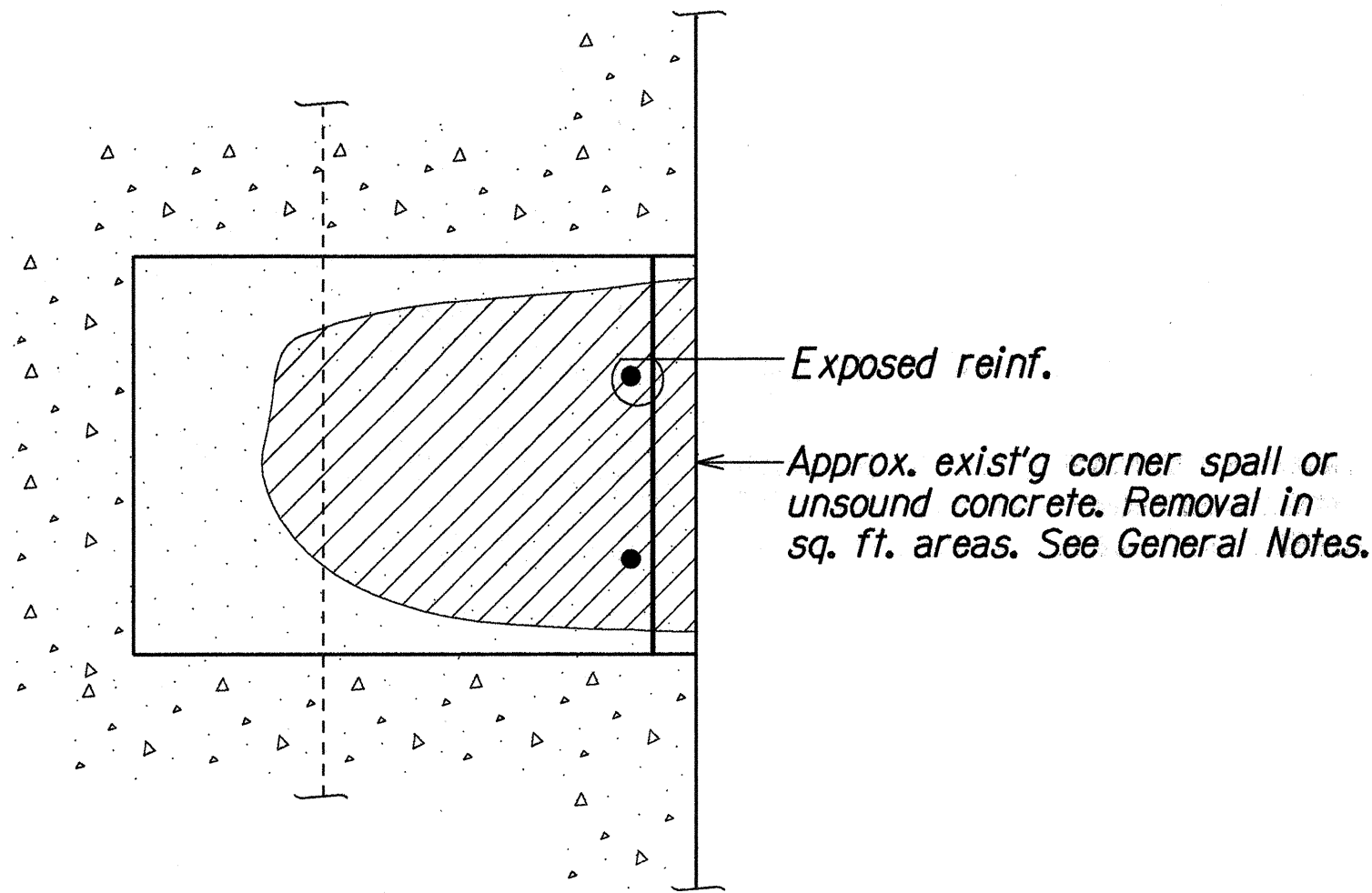
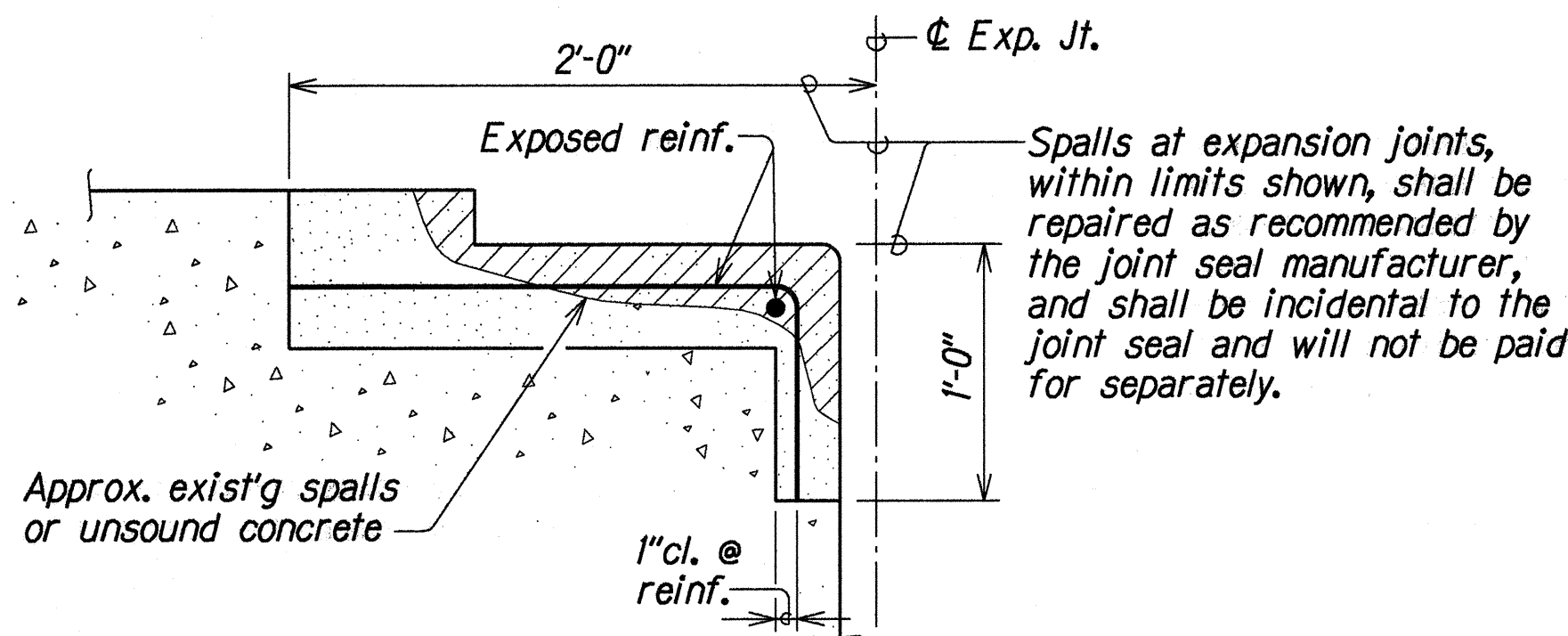


FED. ROAD DIST. NO.	STATE	PROJ. NO.	FISCAL YEAR	SHEET NO.	TOTAL SHEETS
HAWAII	HAW.	H2D-01-97M	1997	2	3



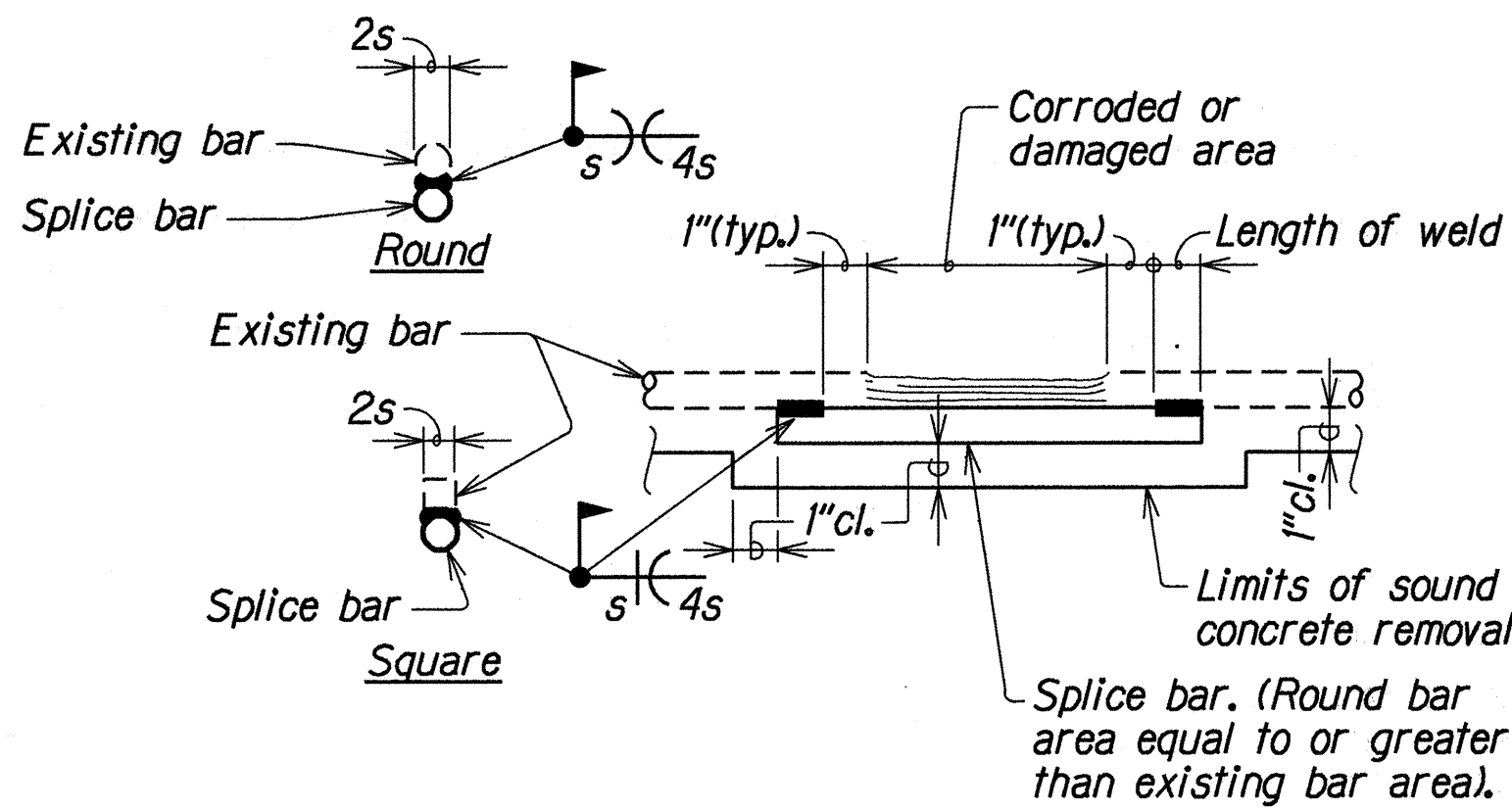
PLAN OR ELEVATION



TYPICAL SECTION

### TYPICAL CONCRETE REPAIRS

Not to Scale



REINFORCING BAR REPAIR SPLICE DETAIL

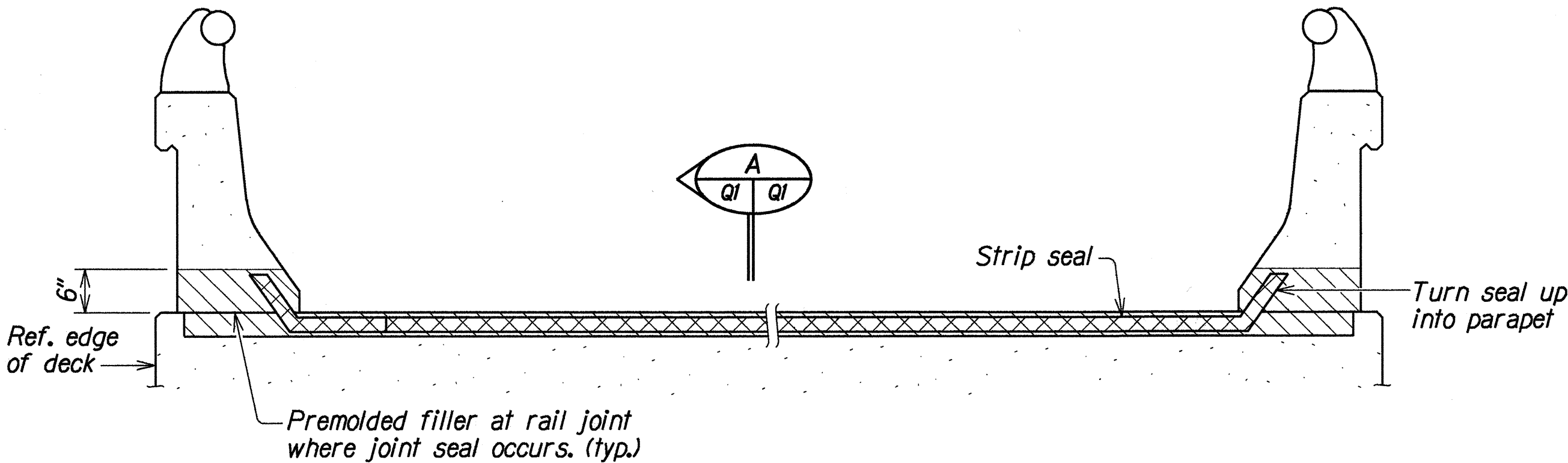
### GENERAL NOTES

#### REPAIR NOTES:

- All deteriorated, damaged, cracked, spalled, honeycombed concrete or concrete over rusted reinforcing bars shall be removed as shown and repaired as recommended by the joint seal manufacturer.
- Provide minimum 1 1/2" concrete cover over reinforcement.
- Reinforcing bars that have rusted more than 25% of their original cross sectional area shall be strengthened as shown on "Reinforcing Bar Repair Splice Detail", this sheet.
- The Engineer shall determine all areas to be repaired and the limits of repair at each area.

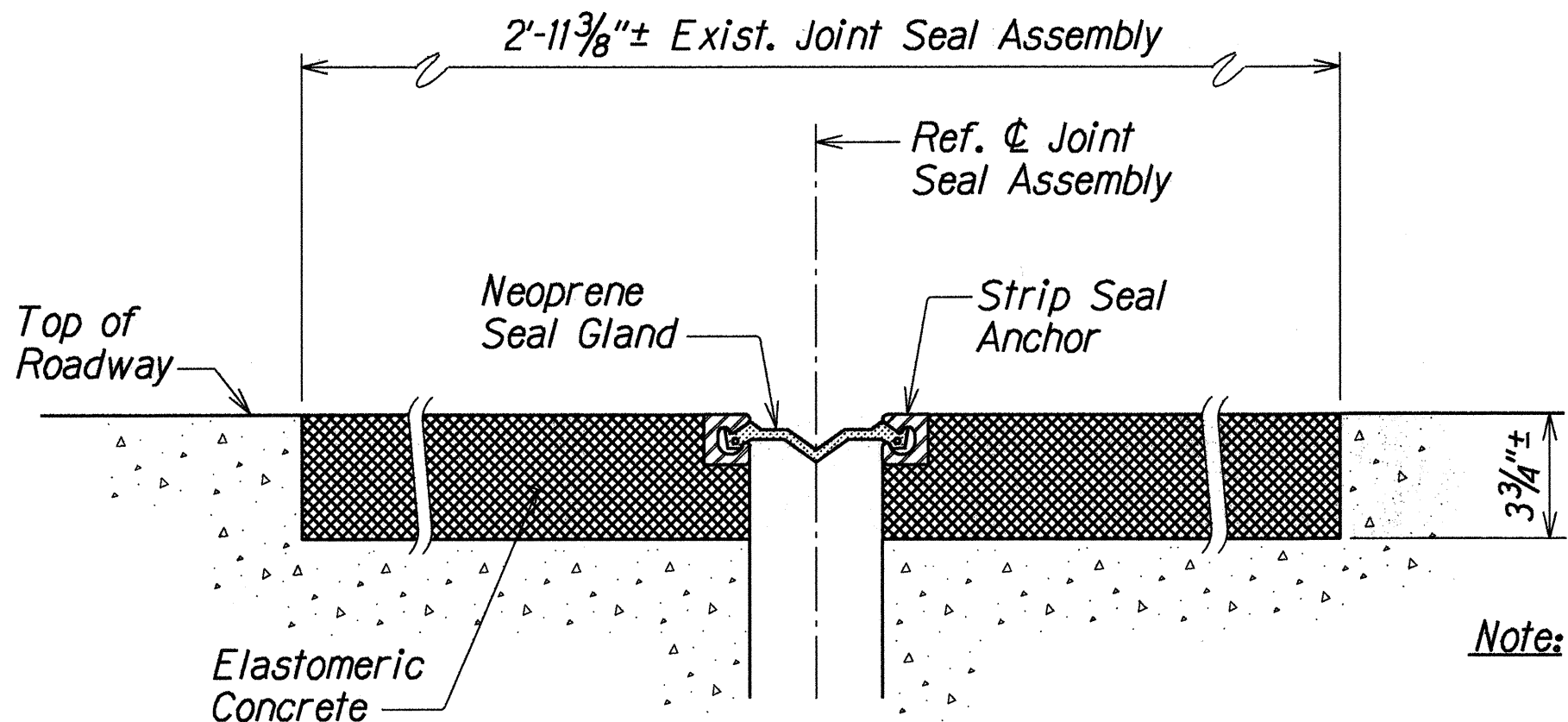
**INCIDENTAL ITEMS:** The following items shall be considered incidental to the various pay items or repairs and will not be paid for separately:

- Cleaning of all exposed, corroded reinforcing steel to sound metal.
- Reinforcing bars of repair splice for strengthening corroded bars.



TYPICAL SECTION AT JOINT SEAL

Scale: 3/4" = 1'-0"



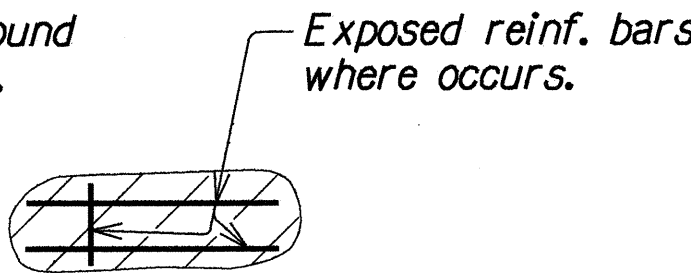
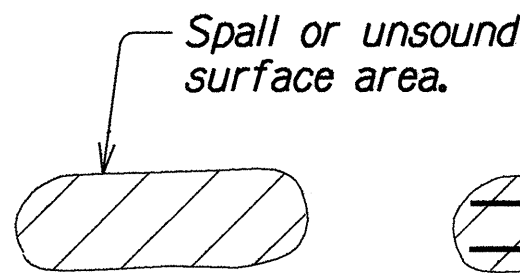
SECTION

Not to Scale

#### GENERAL:

- All reinforcing steel to be ASTM A 615 Grade 40.
- All welding shall be done in accordance with the current edition of the Reinforcing Steel Welding Code AWS D1.4.
- Maintenance & control of traffic--See Special Provisions sub-section 104.04.

#### SYMBOLS AND ABBREVIATIONS:



S.S.: Surface spall (Concrete)  
S.C.: Surface crack (Concrete)  
H.C.: Hairline crack  
S.F. or sq. ft.: Square feet  
L.F.: Linear feet

### ESTIMATED QUANTITIES

ITEM NO.	DESCRIPTION	UNITS	QUANTITY
677.0100	Preformed Joint Seals	L.S.	L.S.

ORIGINAL PLAN	DATE	DESIGNED BY	CHECKED BY
NOTE BOOK	1/10/97	KSG	KBY
QUANTITIES BY	1/10/97	KBY	DCO
CHECKED BY	1/10/97	KBY	DCO

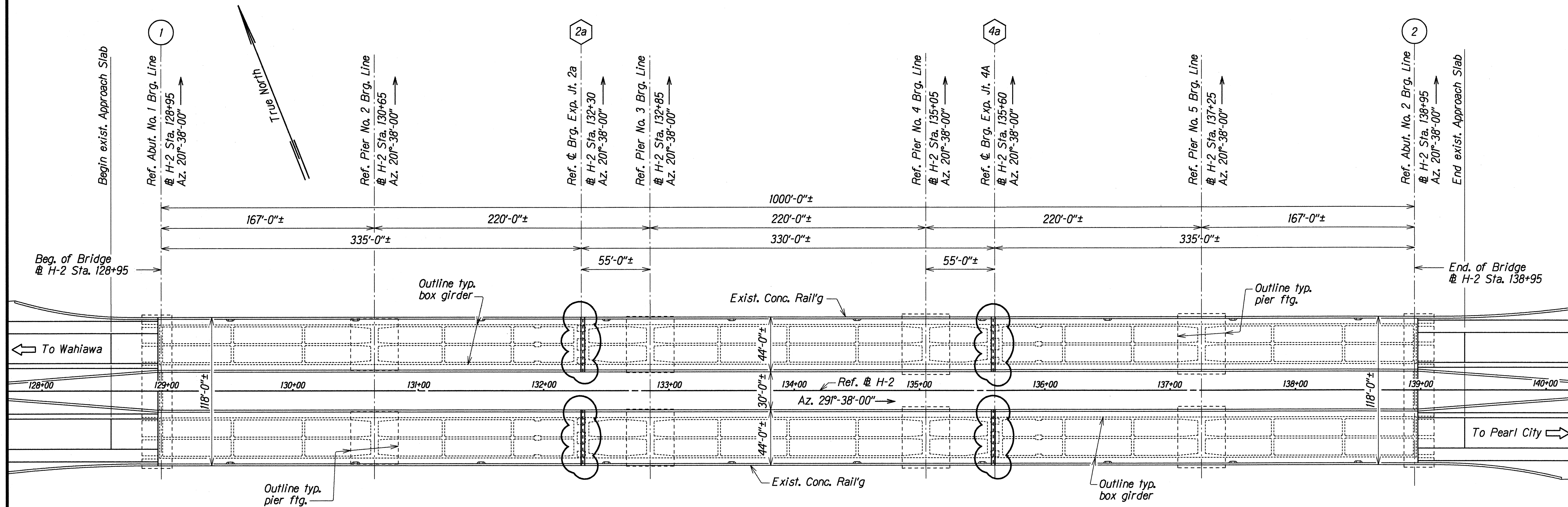
STATE OF HAWAII  
DEPARTMENT OF TRANSPORTATION  
HIGHWAYS DIVISION

REHABILITATION AND BRIDGE  
REPAIR DETAILS

INTERSTATE ROUTE H-2  
Repair Expansion Joints On Waikakalaua Bridge  
Project No. H2D-01-97M  
Scale: As Noted  
Date: Jan, 1997

SHEET No. 01 OF 2 SHEETS

FED. ROAD DIST. NO.	STATE	PROJ. NO.	FISCAL YEAR	SHEET NO.	TOTAL SHEETS
HAWAII	HAW.	H2D-01-97M	1997	3	3



LAYOUT PLAN  
Scale 1" = 40'-0"

Key to Symbols

Replace Expansion Joint Seals

Existing Deck Drain Location

ORIGINAL PLAN	DESIGNED BY	DATE
NOTE BOOK	DESIGNED BY	JAN 1997
QUANTITIES BY	DESIGNED BY	JAN 1997
CHECKED BY	DESIGNED BY	JAN 1997

STATE OF HAWAII  
DEPARTMENT OF TRANSPORTATION  
HIGHWAYS DIVISION

**REHABILITATION AND BRIDGE  
REPAIR DETAILS**

INTERSTATE ROUTE H-2  
Repair Expansion Joints On Waikakalaua Bridge  
Project No. H2D-01-97M

Scale: As Noted Date: Jan, 1997

SHEET No. Q2 OF 2 SHEETS