

NOTES FOR TRAFFIC CONTROL PLAN:

- The permittee shall make minor adjustments at ramps, bridges, structures, etc. to fit field conditions.
- Cones or delineators shall be extended to a point where they are visible to approaching traffic.
- Traffic control devices shall be installed such that the sign or device farthest from the work area shall be placed first. The others shall then be placed progressively toward the work area.
- Regulatory and warning signs within the construction zone that are in conflict with the traffic control plans shall be removed or covered. All signs shall be restored upon completion of the work.
- Flaggers and/or police officers shall be in sight of each other or in direct communication at all times.
- When required by the issuing office, the permittee shall install a flashing arrow signal as shown on the traffic control plans.
- All traffic lanes shall be a minimum of 11 feet wide.
- All construction warning signs shall be promptly removed or covered whenever the message is not applicable or not in use.
- The backs of all signs used for traffic control shall be appropriately covered to preclude the display of inapplicable sign messages (i.e. when signs have message on both faces).
- At the end of each day's work, or as soon as the work is completed, the permittee shall remove all traffic control devices no longer needed to permit free and safe passage of public traffic. Removal shall be in the reverse order of installation. Replace existing faded or obliterate pavement markings that are necessary for safe traffic flow in the construction area with temporary or permanent markings before opening the roadway to public traffic each day.
- Replace permanent pavement markings and traffic signs upon completion of each phase of work.
- The Contractor shall control traffic in and out of driveways.
- Sign spacing (D), taper lengths (T) and spacing of cones or delineators shall be as shown on Table 1, on this sheet, unless otherwise noted on the Traffic Control Plans.
- All work zone traffic control devices shall comply with the "Statewide Guideline For Work Zone Traffic Control Devices," dated September 13, 2000.
- The Traffic Control Plans provided are based on the conceptual construction phasing and work areas shown. If the Contractor proposes to modify the construction phasing and work areas, the Contractor shall prepare and submit modified traffic control plans to the Engineer for approval at least 14 days prior to scheduling commencement of work.

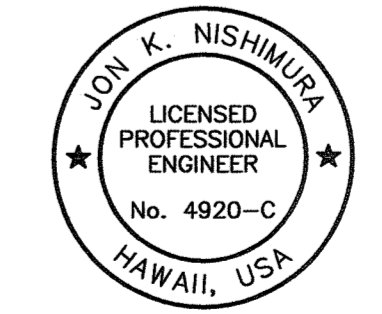
TABLE 1 FOR TRAFFIC CONTROL PLAN

POSTED SPEED LIMIT (M.P.H.)	SIGN SPACING (D) (FEET)	TAPER LENGTH (T) (FEET)		LONGITUDINAL BUFFER SPACE (B) (FEET)	SPACING OF CONES OR DELINEATORS (FEET)		
		W=12' OR LESS ①	W>GREATER THAN 12' ①		TAPER	TANGENT	WORK AREA
20	250	200	Wx17	35	20	20	10
25	250	200	Wx17	55	25	25	10
30	250	250	Wx20	85	30	30	10
35	250	250	Wx20	120	35	35	10
40	500	350	Wx30	170	40	40	10
45	500	550	Wx45	220	45	45	10
50	1000	600	Wx50	280	50	50	10
55	1000	700	Wx55	335	55	55	10

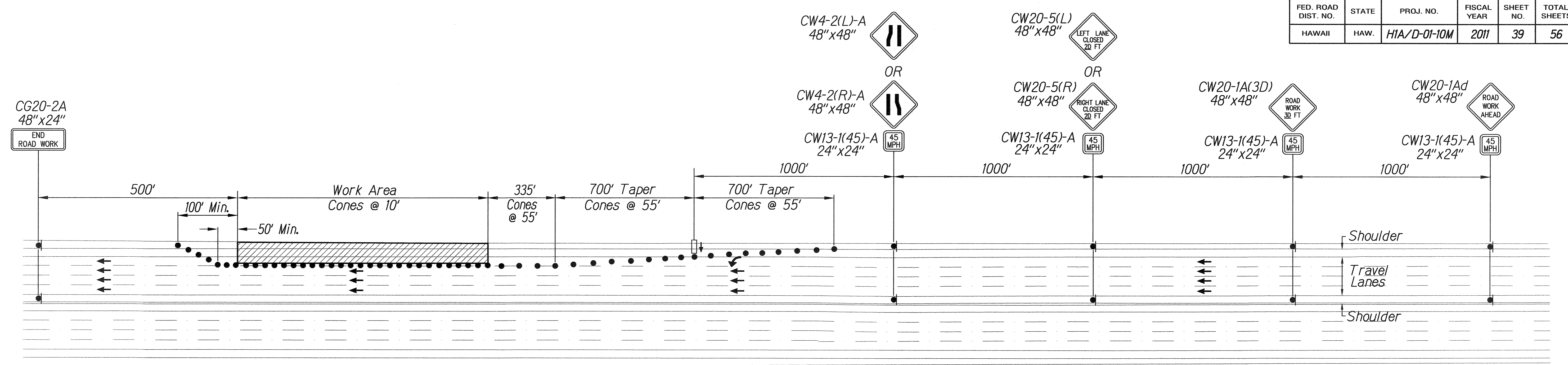
NOTE:

① W=Width of lane, shoulder, or offset

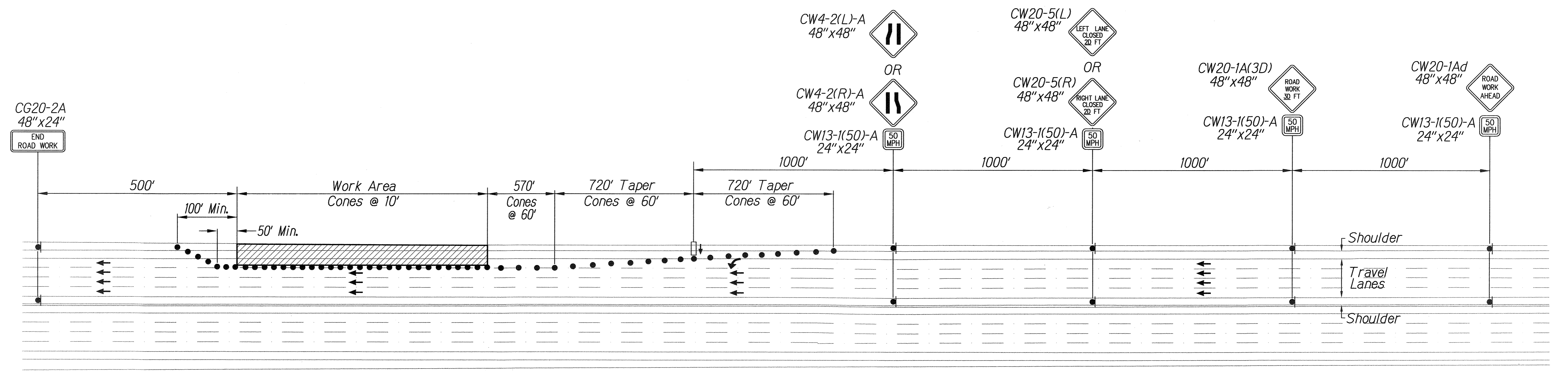
SURVEY PLOTTED BY \_\_\_\_\_ DATE \_\_\_\_\_  
 DRAWN BY \_\_\_\_\_  
 CHECKED BY \_\_\_\_\_  
 NOTE BOOK \_\_\_\_\_  
 QUANTITIES BY \_\_\_\_\_  
 CHECKED BY \_\_\_\_\_  
 No. \_\_\_\_\_

 <p>JOY K. NISHIMURA LICENSED PROFESSIONAL ENGINEER No. 4920-C HAWAII, USA</p> <p>This work was prepared by me or under my supervision.</p> <p><i>[Signature]</i> FUKUNAGA AND ASSOCIATES, INC. LICENSE EXPIRATION DATE: APRIL 30, 2012</p>	<p>STATE OF HAWAII DEPARTMENT OF TRANSPORTATION HIGHWAYS DIVISION</p> <p><b>TRAFFIC CONTROL PLAN</b> <b>GENERAL NOTES</b></p> <p><i>Interstate Route H-1 Freeway Lighting System Reconductoring Makakilo Interchange to Kunia Interchange</i> Project No. H1A/D-01-10M Date: August, 2010</p> <p>Scale: No Scale</p>
--	--

FED. ROAD DIST. NO.	STATE	PROJ. NO.	FISCAL YEAR	SHEET NO.	TOTAL SHEETS
HAWAII	HAW.	HIA/D-01-10M	2011	39	56



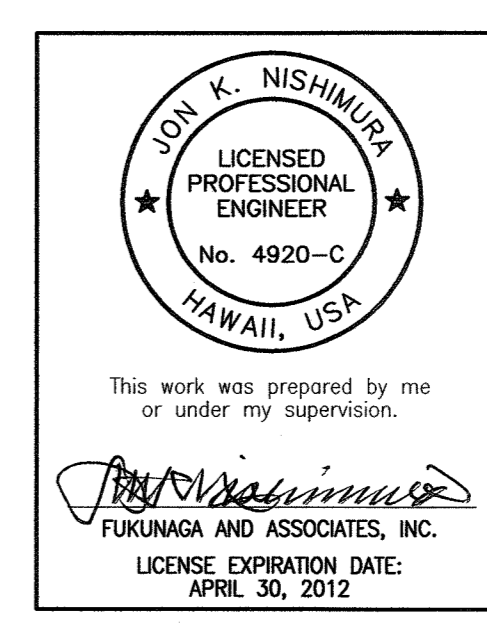
**TYPICAL LANE CLOSURE ON DIVIDED HIGHWAY  
(POSTED SPEED LIMIT 55 M.P.H)**  
Not to Scale



**TYPICAL LANE CLOSURE ON DIVIDED HIGHWAY  
(POSTED SPEED LIMIT 60 M.P.H)**  
Not to Scale

- LEGEND:**
- ▲ Sign
  - Cones or Delineator
  - Direction of traffic
  - ⚡ Flashing arrow signal
  - ▨ Proposed work area

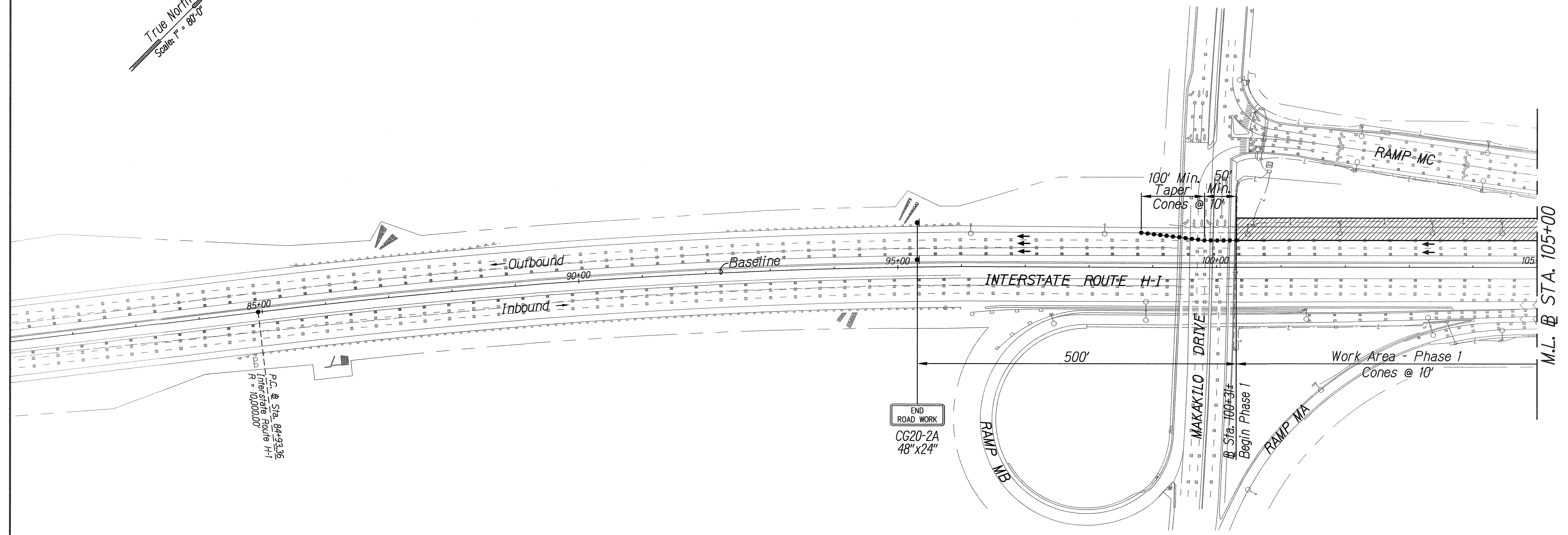
SURVEY PLOTTED BY	DATE
DRAWN BY	
CHECKED BY	
NOTE BOOK	
QUANTITIES BY	
CHECKED BY	
N.	



STATE OF HAWAII  
DEPARTMENT OF TRANSPORTATION  
HIGHWAYS DIVISION  
**TRAFFIC CONTROL PLAN**  
**DETAILS**  
Interstate Route H-1  
Freeway Lighting System Reconductoring  
Makailo Interchange to Kunia Interchange  
Project No. HIA/D-01-10M  
Scale: Note to Scale Date: August, 2010  
SHEET No. T-2 OF 19 SHEETS

FED. ROAD DIST. NO.	STATE	PROJ. NO.	FISCAL YEAR	SHEET NO.	TOTAL SHEETS
HAWAII	HAW.	HIA/D-01-10M	2011	40	56

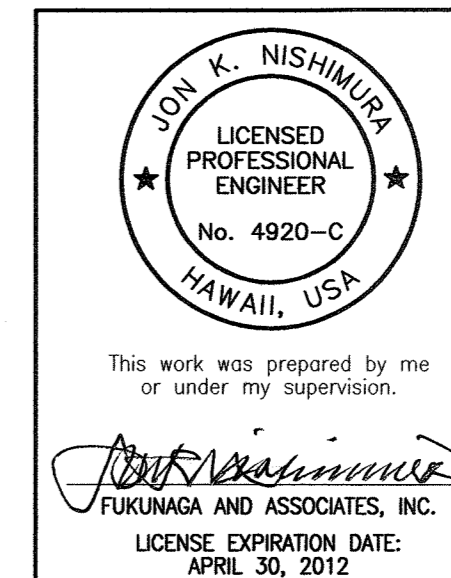
True North  
Scale: 1" = 80'-0"



- LEGEND:**
- ▴ Sign
  - Cones or Delineator
  - Direction of traffic
  - ⚡ Flashing arrow signal
  - ▨ Proposed work area

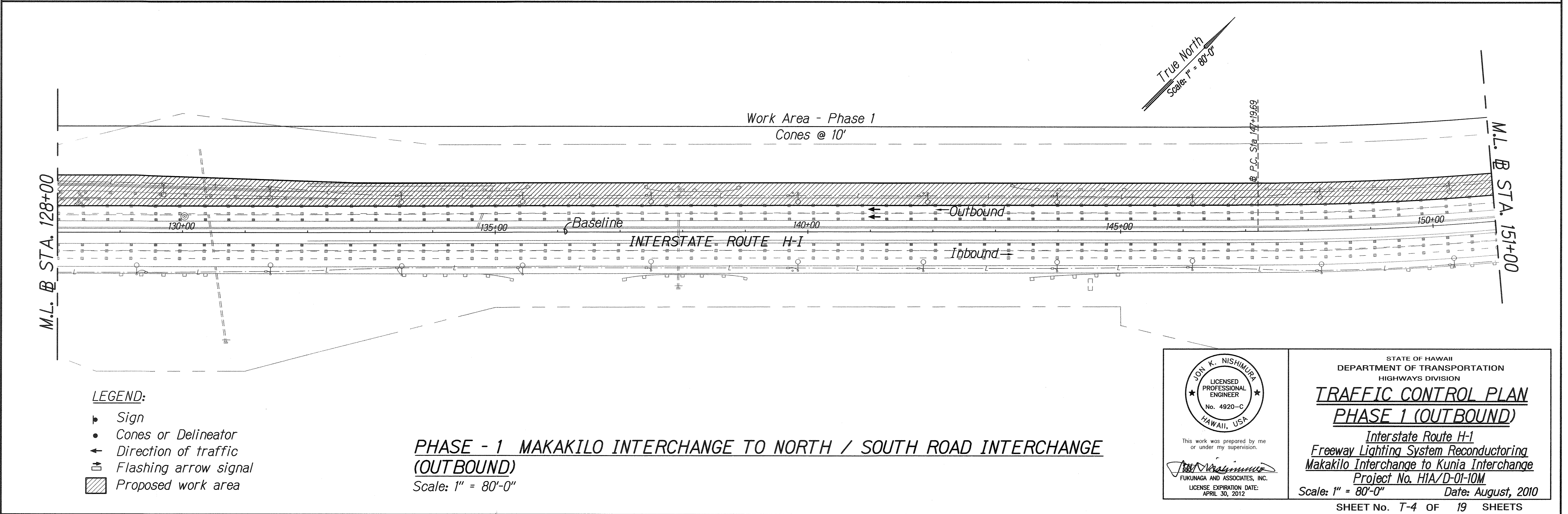
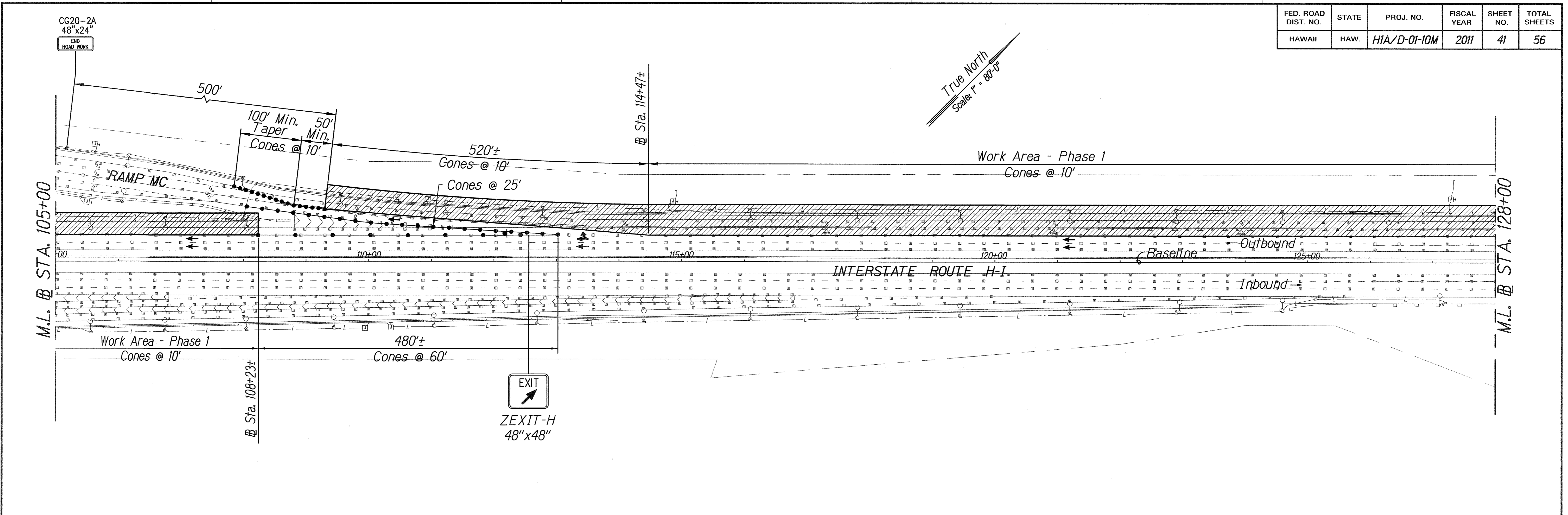
SURVEY PLOTTED BY	DATE
DRAWN BY	
DESIGNED BY	
NOTE BOOK	
QUANTITIES BY	
CHECKED BY	
No.	

**PHASE - 1 MAKAKILO INTERCHANGE TO NORTH / SOUTH ROAD INTERCHANGE (OUTBOUND)**  
Scale: 1" = 80'-0"



STATE OF HAWAII  
DEPARTMENT OF TRANSPORTATION  
HIGHWAYS DIVISION  
**TRAFFIC CONTROL PLAN**  
**PHASE 1 (OUTBOUND)**  
Interstate Route H-1  
Freeway Lighting System Reconductoring  
Makakilo Interchange to Kunia Interchange  
Project No. HIA/D-01-10M  
Scale: 1" = 80'-0" Date: August, 2010

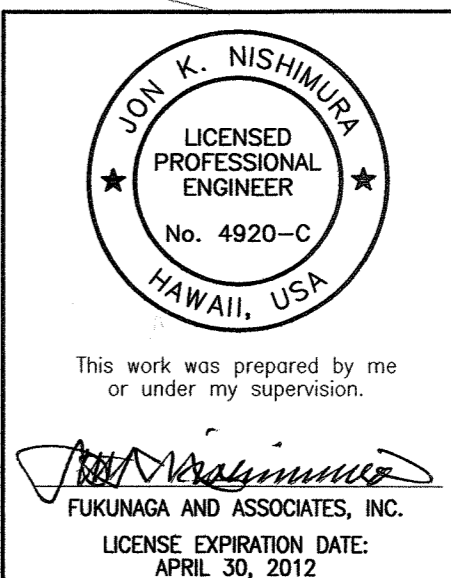
FED. ROAD DIST. NO.	STATE	PROJ. NO.	FISCAL YEAR	SHEET NO.	TOTAL SHEETS
HAWAII	HAW.	HIA/D-01-10M	2011	41	56



SURVEY PLOTTED BY	DATE
DRAWN BY	
TRACED BY	
NOTE BOOK	
QUANTITIES BY	
CHECKED BY	
N.	

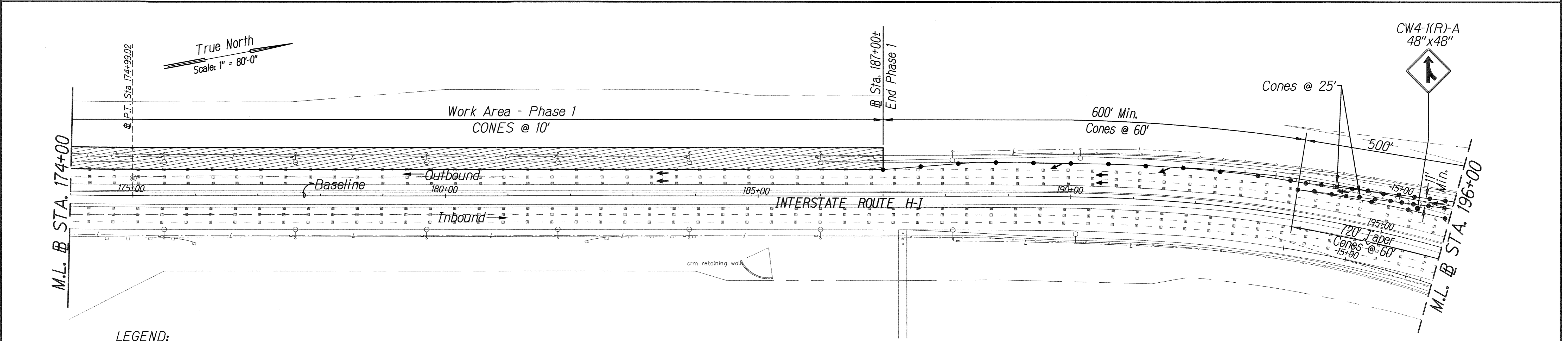
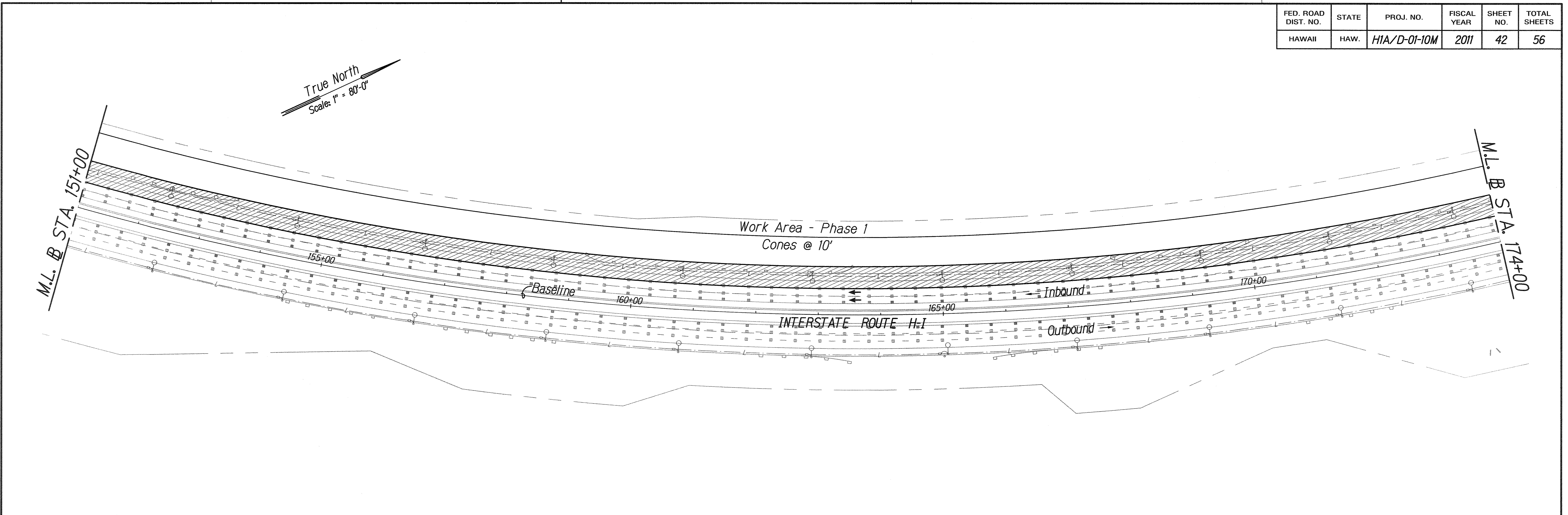
- LEGEND:**
- ▴ Sign
  - Cones or Delineator
  - ← Direction of traffic
  - ⚡ Flashing arrow signal
  - ▨ Proposed work area

**PHASE - 1 MAKAKILO INTERCHANGE TO NORTH / SOUTH ROAD INTERCHANGE (OUTBOUND)**  
 Scale: 1" = 80'-0"



STATE OF HAWAII  
 DEPARTMENT OF TRANSPORTATION  
 HIGHWAYS DIVISION  
**TRAFFIC CONTROL PLAN**  
**PHASE 1 (OUTBOUND)**  
 Interstate Route H-1  
 Freeway Lighting System Reconductoring  
 Makakilo Interchange to Kunia Interchange  
 Project No. HIA/D-01-10M  
 Scale: 1" = 80'-0" Date: August, 2010  
 SHEET No. T-4 OF 19 SHEETS

FED. ROAD DIST. NO.	STATE	PROJ. NO.	FISCAL YEAR	SHEET NO.	TOTAL SHEETS
HAWAII	HAW.	HIA/D-01-10M	2011	42	56



- LEGEND:**
- ▲ Sign
  - Cones or Delineator
  - ↑ Direction of traffic
  - ⚡ Flashing arrow signal
  - ▨ Proposed work area

**PHASE - 1 MAKAKILO INTERCHANGE TO NORTH / SOUTH ROAD INTERCHANGE (OUTBOUND)**  
 Scale: 1" = 80'-0"

SURVEY PLOTTED BY	DATE
DRAWN BY	
TRACED BY	
NOTE BOOK	
QUANTITIES BY	
CHECKED BY	
N.	

This work was prepared by me or under my supervision.

*Joy K. Nishimura*  
 FUKUNAGA AND ASSOCIATES, INC.  
 LICENSE EXPIRATION DATE: APRIL 30, 2012

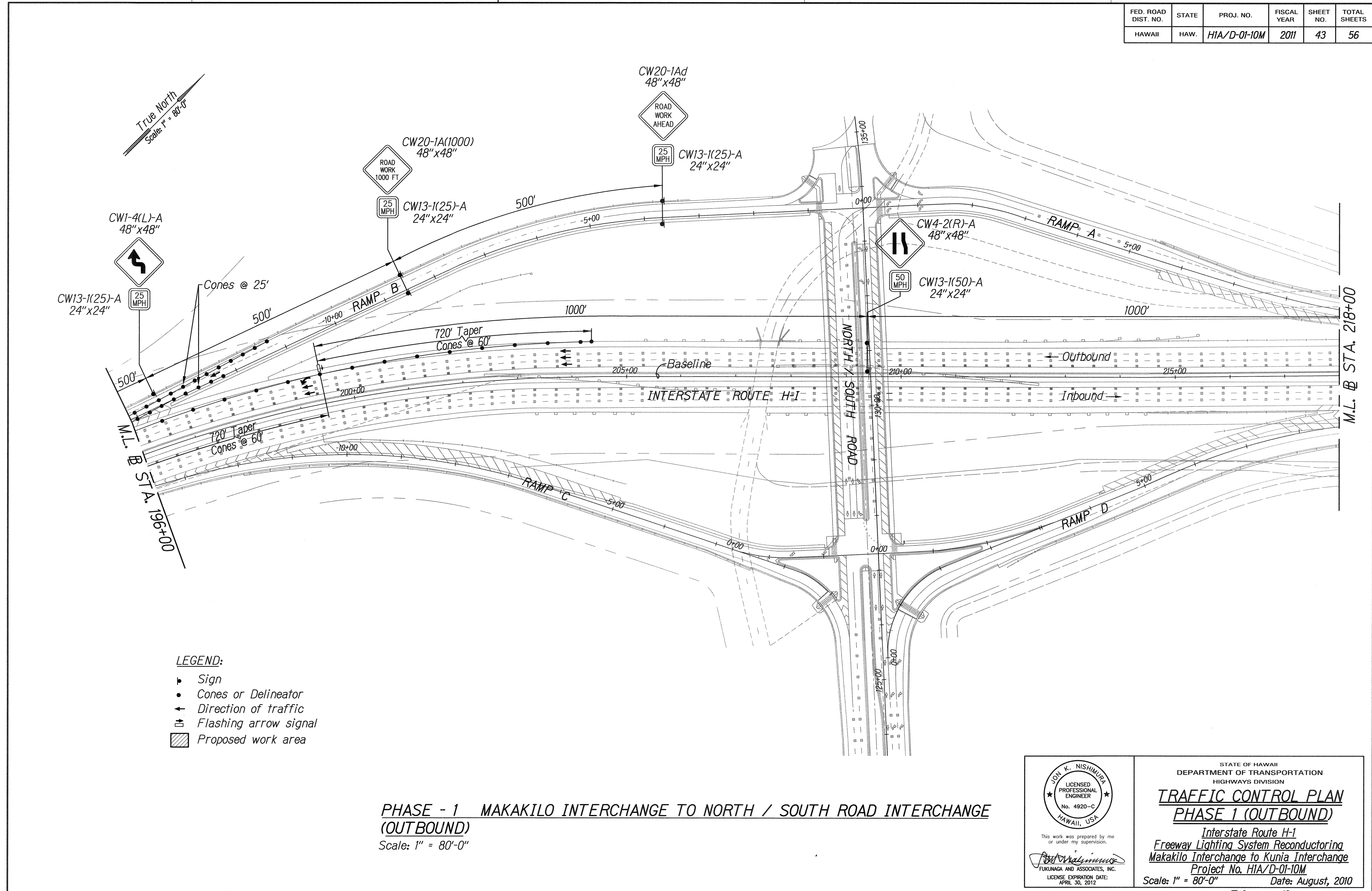
STATE OF HAWAII  
 DEPARTMENT OF TRANSPORTATION  
 HIGHWAYS DIVISION

**TRAFFIC CONTROL PLAN**  
**PHASE 1 (OUTBOUND)**

Interstate Route H-1  
 Freeway Lighting System Reconductoring  
 Makakilo Interchange to Kunia Interchange  
 Project No. HIA/D-01-10M  
 Scale: 1" = 80'-0" Date: August, 2010

SHEET No. T-5 OF 19 SHEETS

FED. ROAD DIST. NO.	STATE	PROJ. NO.	FISCAL YEAR	SHEET NO.	TOTAL SHEETS
HAWAII	HAW.	HIA/D-01-10M	2011	43	56



True North  
Scale: 1" = 80'-0"

CW1-4(L)-A  
48" x 48"  
25 MPH  
CW13-1(25)-A  
24" x 24"

CW20-1A(1000)  
48" x 48"  
ROAD WORK  
1000 FT  
25 MPH  
CW13-1(25)-A  
24" x 24"

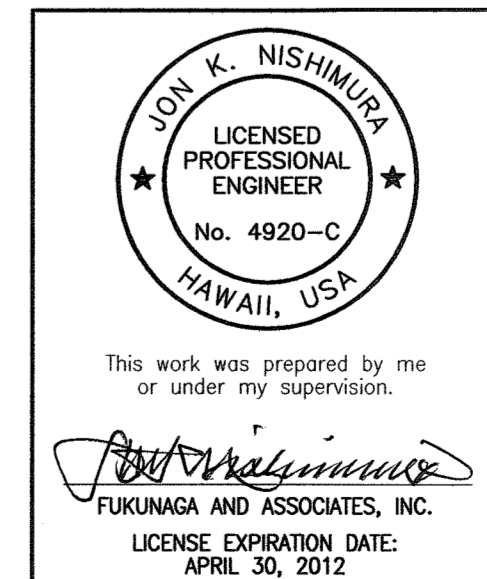
CW20-1Ad  
48" x 48"  
ROAD WORK  
AHEAD  
25 MPH  
CW13-1(25)-A  
24" x 24"

CW4-2(R)-A  
48" x 48"  
50 MPH  
CW13-1(50)-A  
24" x 24"

- LEGEND:**
- Sign
  - Cones or Delineator
  - ← Direction of traffic
  - ⚡ Flashing arrow signal
  - ▨ Proposed work area

**PHASE - 1 MAKAKILO INTERCHANGE TO NORTH / SOUTH ROAD INTERCHANGE (OUTBOUND)**  
Scale: 1" = 80'-0"

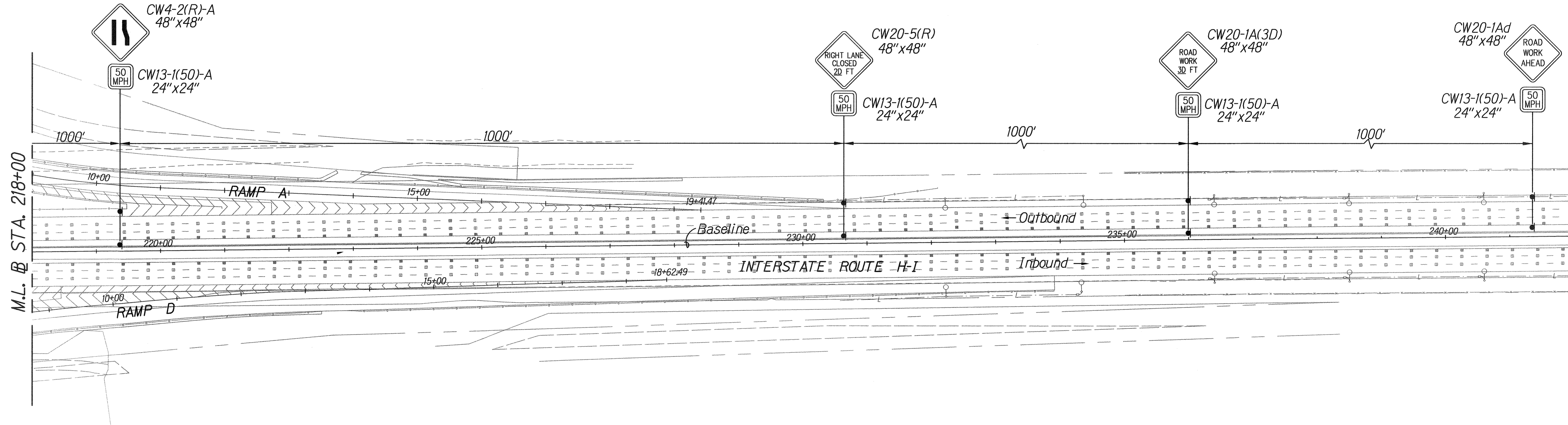
SURVEY PLOTTED BY	DATE
DRAWN BY	
DESIGNED BY	
NOTE BOOK	
QUANTITIES BY	
CHECKED BY	
N.	



STATE OF HAWAII  
DEPARTMENT OF TRANSPORTATION  
HIGHWAYS DIVISION  
**TRAFFIC CONTROL PLAN**  
**PHASE 1 (OUTBOUND)**  
Interstate Route H-1  
Freeway Lighting System Reconductoring  
Makakilo Interchange to Kunia Interchange  
Project No. HIA/D-01-10M  
Scale: 1" = 80'-0" Date: August, 2010  
SHEET No. T-6 OF 19 SHEETS

FED. ROAD DIST. NO.	STATE	PROJ. NO.	FISCAL YEAR	SHEET NO.	TOTAL SHEETS
HAWAII	HAW.	H1A/D-01-10M	2011	44	56

True North  
Scale: 1" = 80'-0"



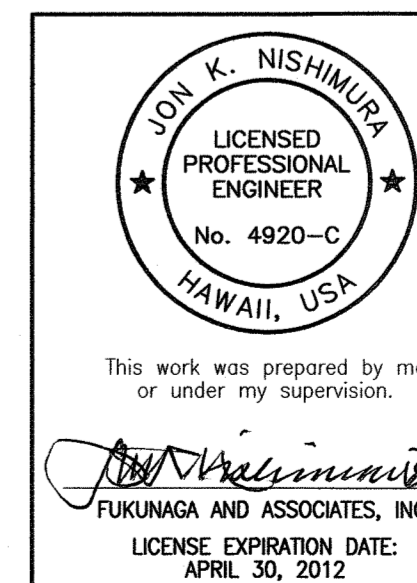
**LEGEND:**

- Sign
- Cones or Delineator
- ← Direction of traffic
- ⚡ Flashing arrow signal
- ▨ Proposed work area

SURVEY PLOTTED BY	DATE
DRAWN BY	.....
TRACED BY	.....
NOTED BY	.....
QUANTITIES BY	.....
CHECKED BY	.....
NO.	.....

**PHASE - 1 MAKAKILO INTERCHANGE TO NORTH / SOUTH ROAD INTERCHANGE (OUTBOUND)**

Scale: 1" = 80'-0"



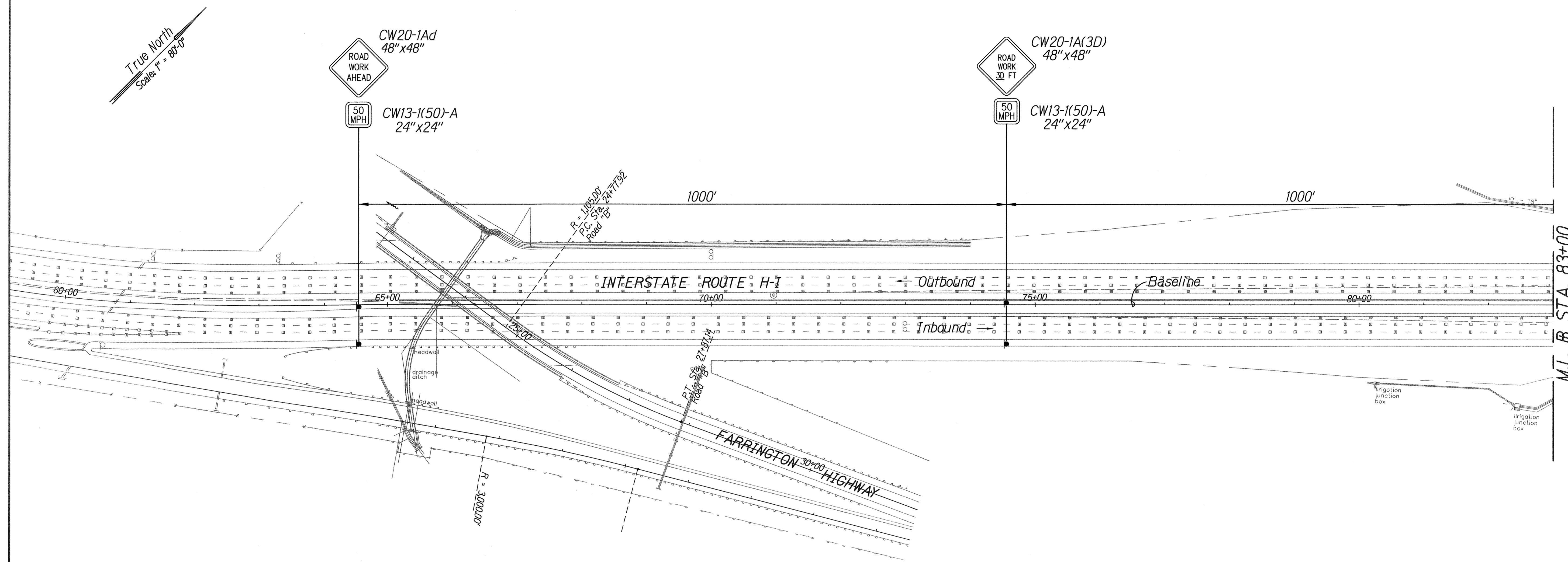
STATE OF HAWAII  
DEPARTMENT OF TRANSPORTATION  
HIGHWAYS DIVISION

**TRAFFIC CONTROL PLAN**  
**PHASE 1 (OUTBOUND)**

Interstate Route H-1  
Freeway Lighting System Reconductoring  
Makakilo Interchange to Kunia Interchange  
Project No. H1A/D-01-10M  
Date: August, 2010

Scale: 1" = 80'-0"

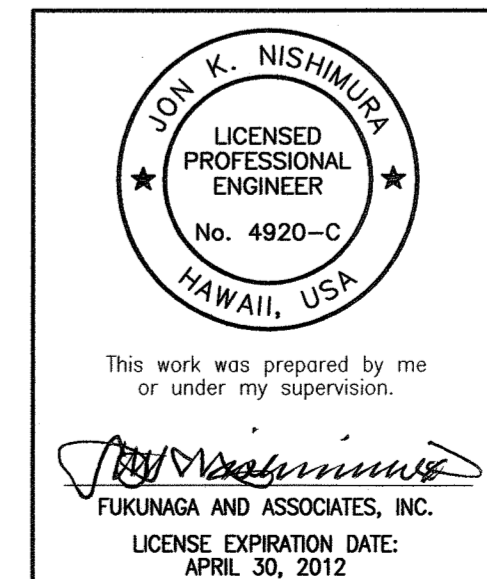
FED. ROAD DIST. NO.	STATE	PROJ. NO.	FISCAL YEAR	SHEET NO.	TOTAL SHEETS
HAWAII	HAW.	HIA/D-01-10M	2011	45	56



- LEGEND:**
- ▾ Sign
  - Cones or Delineator
  - ← Direction of traffic
  - ⚡ Flashing arrow signal
  - ▨ Proposed work area

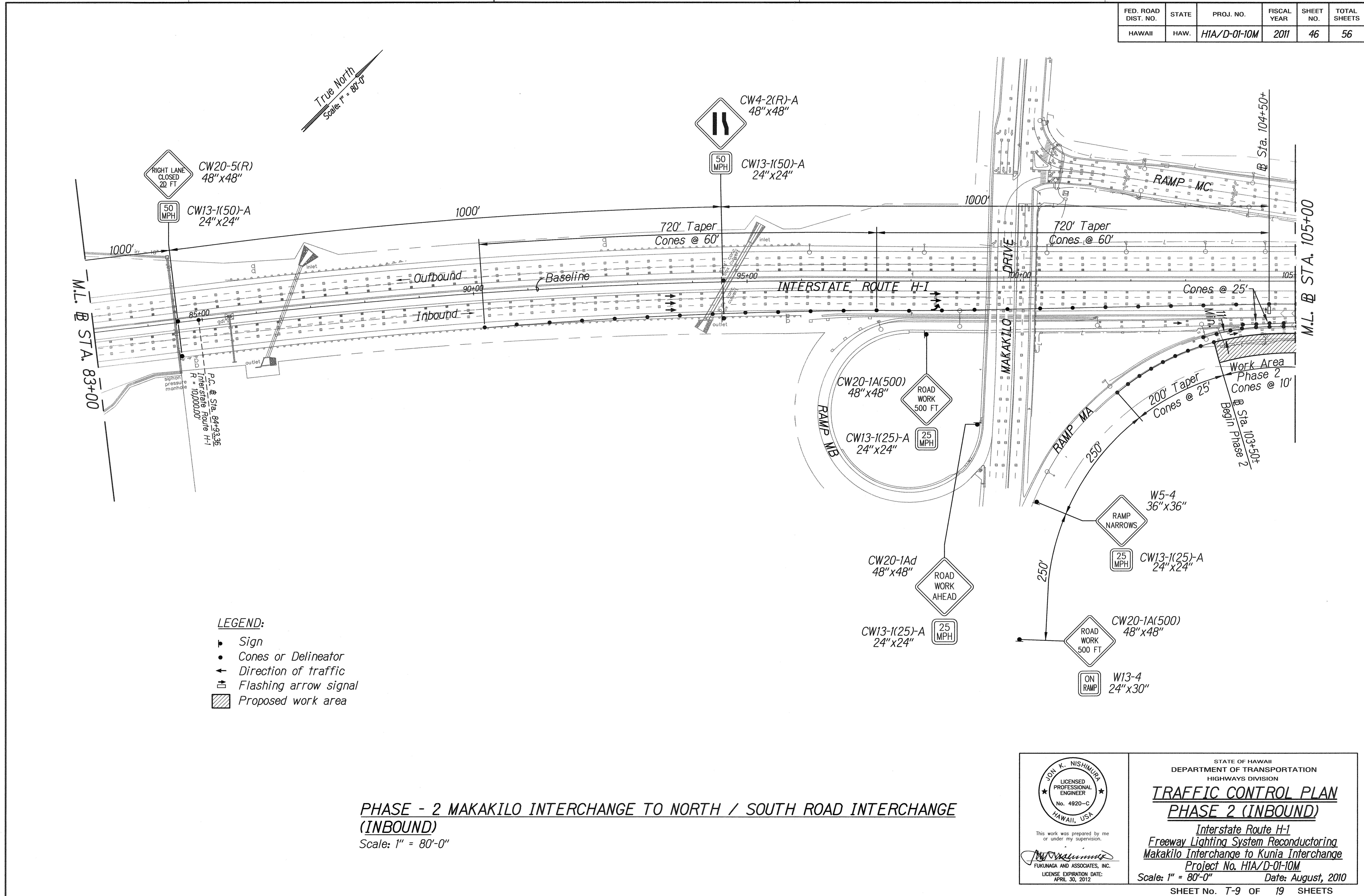
SURVEY PLOTTED BY	DATE
DRAWN BY	
DESIGNED BY	
NOTE BOOK	
QUANTITIES BY	
CHECKED BY	
No.	

**PHASE - 2 MAKAKILO INTERCHANGE TO NORTH / SOUTH ROAD INTERCHANGE (INBOUND)**  
 Scale: 1" = 80'-0"



STATE OF HAWAII  
 DEPARTMENT OF TRANSPORTATION  
 HIGHWAYS DIVISION  
**TRAFFIC CONTROL PLAN**  
**PHASE 2 (INBOUND)**  
*Interstate Route H-1*  
*Freeway Lighting System Reconductoring*  
*Makakilo Interchange to Kunia Interchange*  
 Project No. HIA/D-01-10M  
 Scale: 1" = 80'-0" Date: August, 2010

FED. ROAD DIST. NO.	STATE	PROJ. NO.	FISCAL YEAR	SHEET NO.	TOTAL SHEETS
HAWAII	HAW.	HIA/D-01-10M	2011	46	56



SURVEY PLOTTED BY	DATE
DRAWN BY	
TRACED BY	
NOTE BOOK	
QUANTITIES BY	
CHECKED BY	
No.	

- LEGEND:**
- ▴ Sign
  - Cones or Delineator
  - ← Direction of traffic
  - ⚡ Flashing arrow signal
  - ▨ Proposed work area

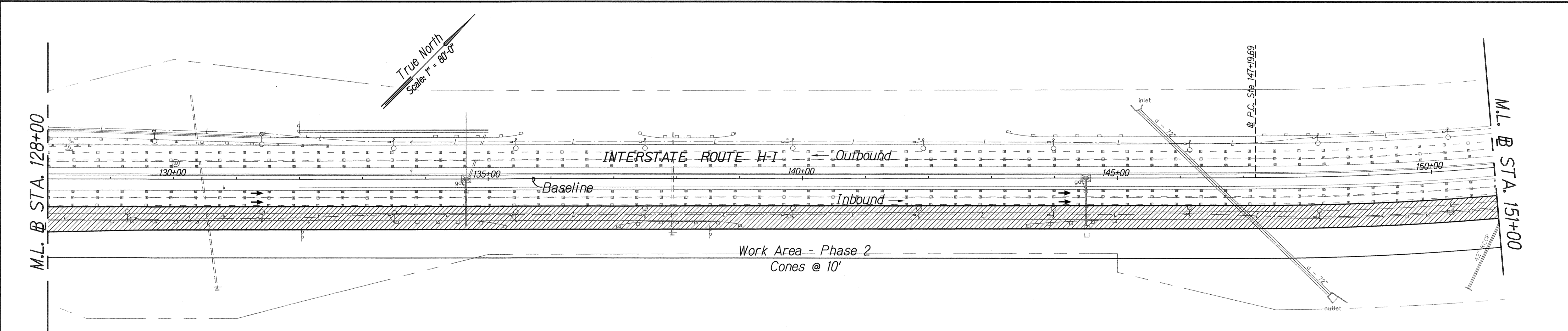
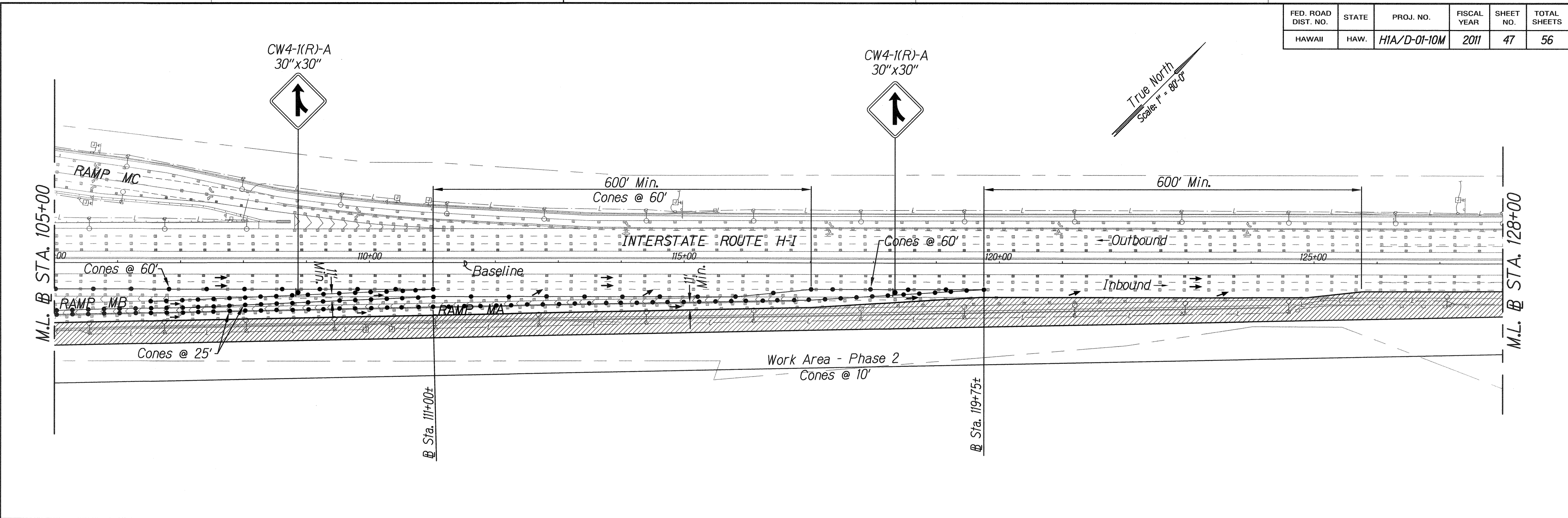
**PHASE - 2 MAKAKILO INTERCHANGE TO NORTH / SOUTH ROAD INTERCHANGE (INBOUND)**  
 Scale: 1" = 80'-0"

STATE OF HAWAII  
 DEPARTMENT OF TRANSPORTATION  
 HIGHWAYS DIVISION

**TRAFFIC CONTROL PLAN  
 PHASE 2 (INBOUND)**

Interstate Route H-1  
 Freeway Lighting System Reconductoring  
 Makakilo Interchange to Kunia Interchange  
 Project No. HIA/D-01-10M  
 Scale: 1" = 80'-0" Date: August, 2010

FED. ROAD DIST. NO.	STATE	PROJ. NO.	FISCAL YEAR	SHEET NO.	TOTAL SHEETS
HAWAII	HAW.	HIA/D-01-10M	2011	47	56



- LEGEND:**
- ▲ Sign
  - Cones or Delineator
  - ← Direction of traffic
  - ⚡ Flashing arrow signal
  - ▨ Proposed work area

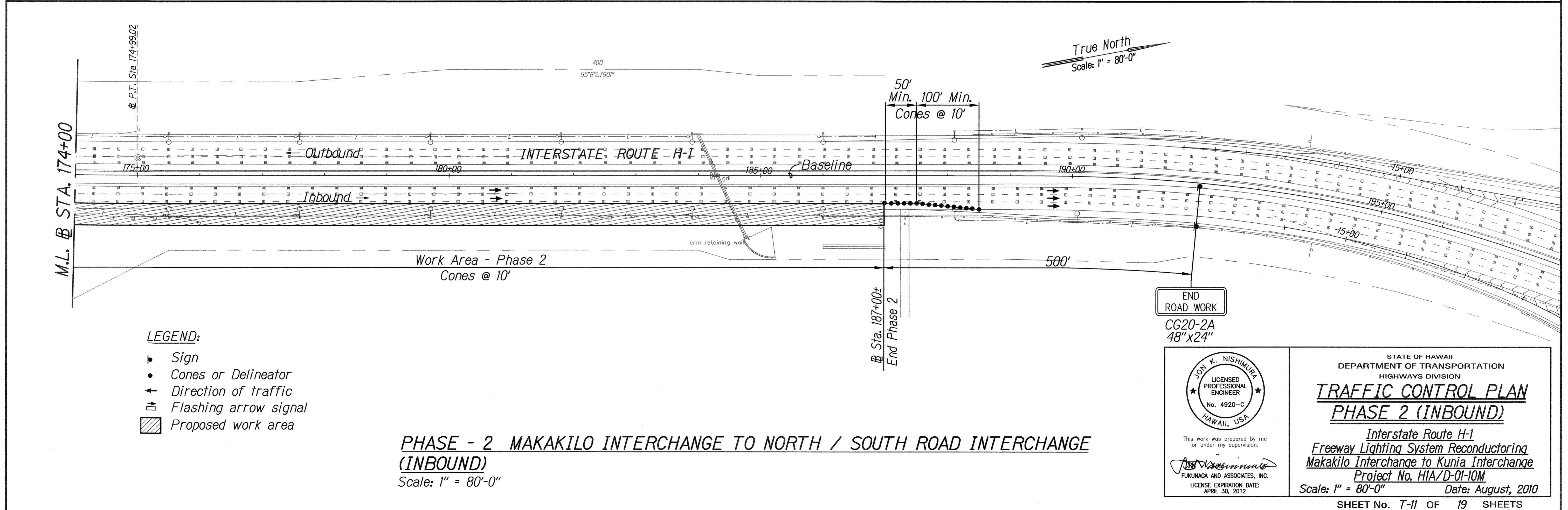
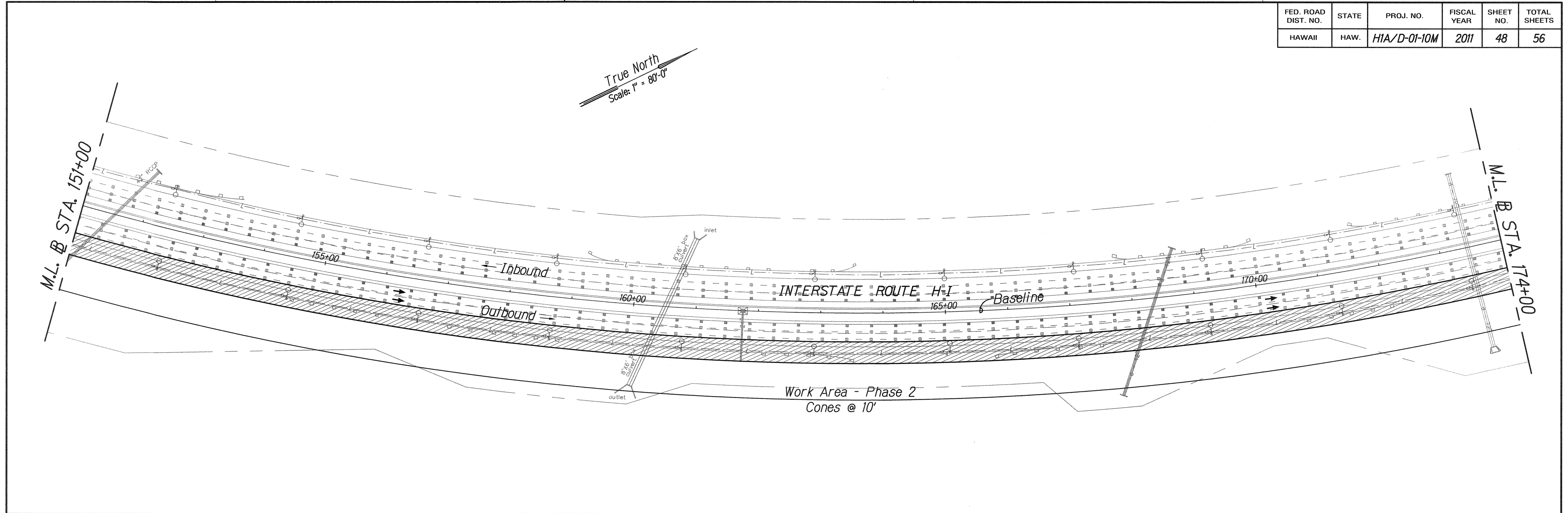
**PHASE - 2 MAKAKILO INTERCHANGE TO NORTH / SOUTH ROAD INTERCHANGE (INBOUND)**  
 Scale: 1" = 80'-0"

SURVEY PLOTTED BY	DATE
DRAWN BY	
DESIGNED BY	
NOTE BOOK	
QUANTITIES BY	
CHECKED BY	
N.	

This work was prepared by me or under my supervision.  
  
 FUKUNAGA AND ASSOCIATES, INC.  
 LICENSE EXPIRATION DATE: APRIL 30, 2012

STATE OF HAWAII  
 DEPARTMENT OF TRANSPORTATION  
 HIGHWAYS DIVISION  
**TRAFFIC CONTROL PLAN**  
**PHASE 2 (INBOUND)**  
 Interstate Route H-1  
 Freeway Lighting System Reconductoring  
 Makakilo Interchange to Kunia Interchange  
 Project No. HIA/D-01-10M  
 Scale: 1" = 80'-0" Date: August, 2010  
 SHEET No. T-10 OF 19 SHEETS

FED. ROAD DIST. NO.	STATE	PROJ. NO.	FISCAL YEAR	SHEET NO.	TOTAL SHEETS
HAWAII	HAW.	HIA/D-01-10M	2011	48	56



SURVEY PLOTTED BY	DATE
DRAWN BY	
TRACED BY	
NOTE BOOK	
QUANTITIES BY	
CHECKED BY	
N.	

- LEGEND:**
- ▲ Sign
  - Cones or Delineator
  - ← Direction of traffic
  - ▭ Flashing arrow signal
  - ▨ Proposed work area

**PHASE - 2 MAKAKILO INTERCHANGE TO NORTH / SOUTH ROAD INTERCHANGE (INBOUND)**  
 Scale: 1" = 80'-0"

JOHN K. NISHIMURA  
 LICENSED PROFESSIONAL ENGINEER  
 No. 4920-C  
 HAWAII, USA

This work was prepared by me or under my supervision.

FUKUNAGA AND ASSOCIATES, INC.  
 LICENSE EXPIRATION DATE: APRIL 30, 2012

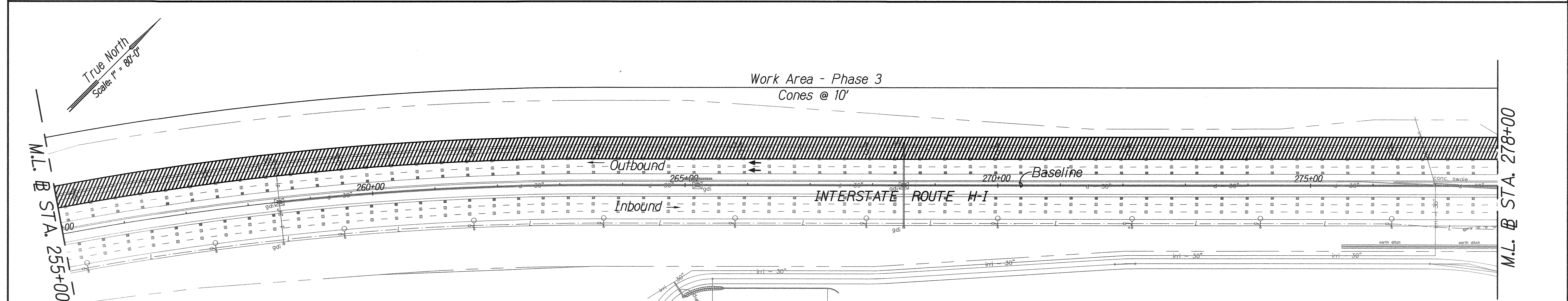
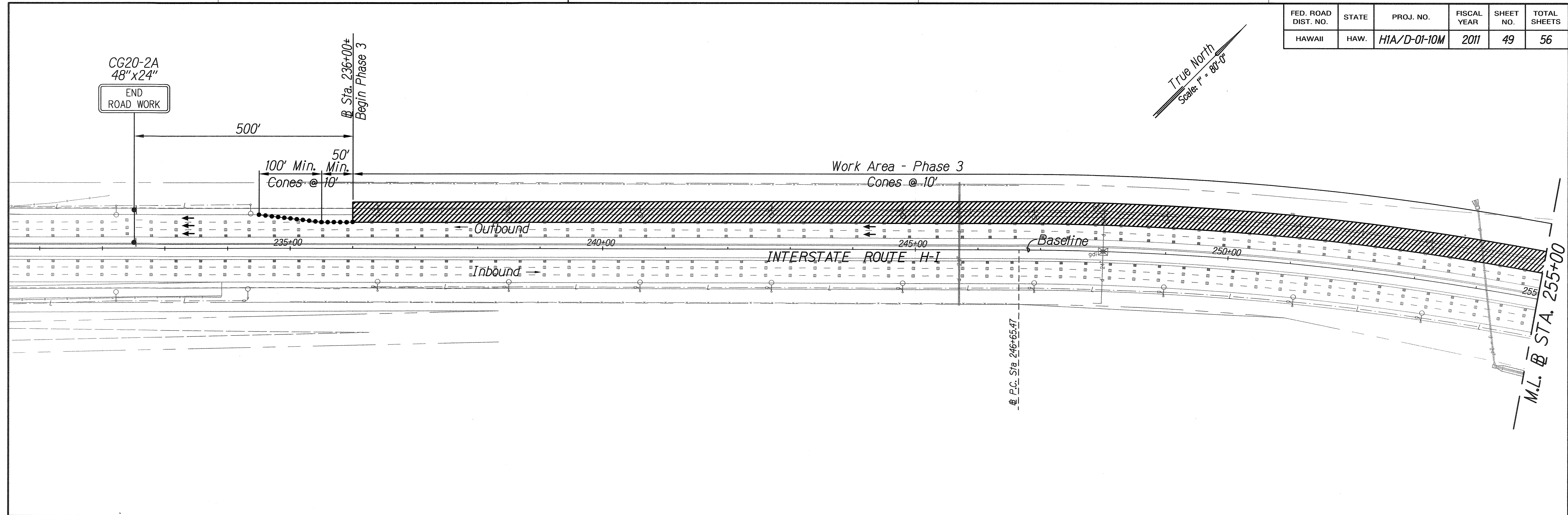
STATE OF HAWAII  
 DEPARTMENT OF TRANSPORTATION  
 HIGHWAYS DIVISION

**TRAFFIC CONTROL PLAN  
 PHASE 2 (INBOUND)**

Interstate Route H-1  
 Freeway Lighting System Reconductoring  
 Makakilo Interchange to Kunia Interchange  
 Project No. HIA/D-01-10M  
 Scale: 1" = 80'-0" Date: August, 2010

SHEET No. T-11 OF 19 SHEETS

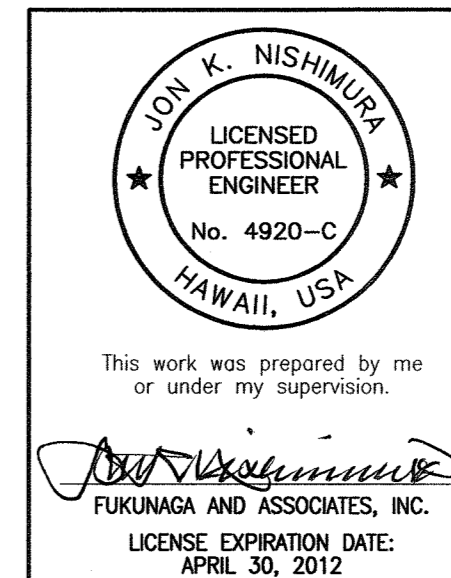
FED. ROAD DIST. NO.	STATE	PROJ. NO.	FISCAL YEAR	SHEET NO.	TOTAL SHEETS
HAWAII	HAW.	HIA/D-01-10M	2011	49	56



SURVEY PLOTTED BY	DATE
DESIGNED BY	
NOTED BY	
CHECKED BY	
QUANTITIES BY	
DATE	

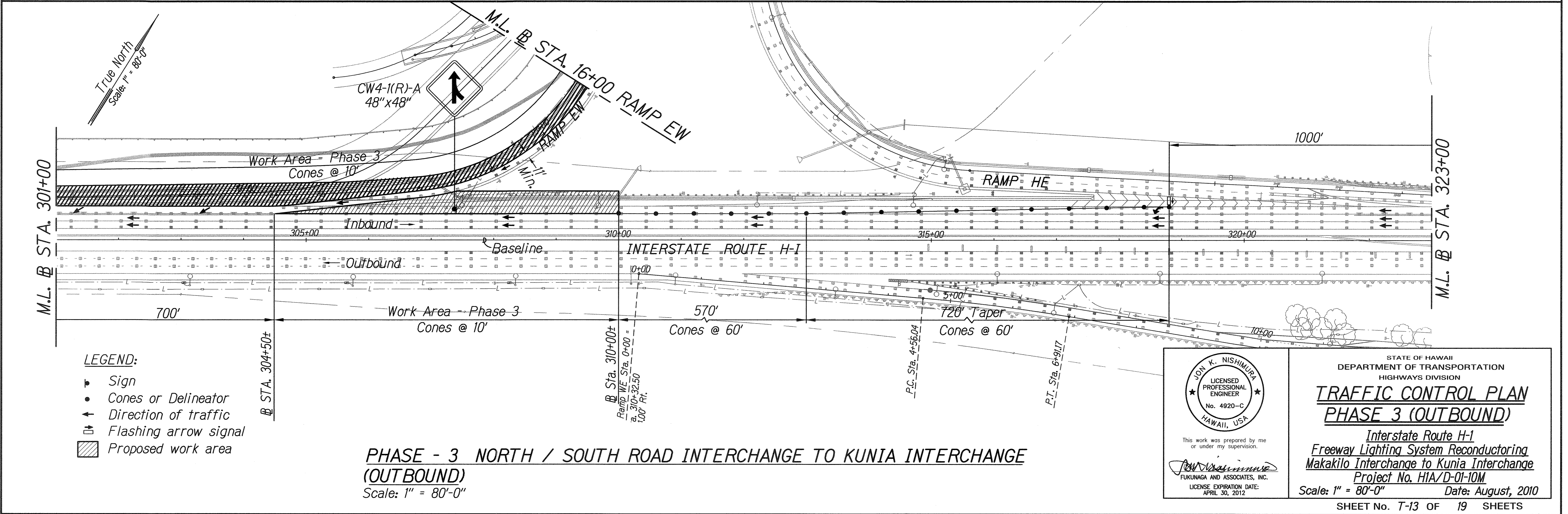
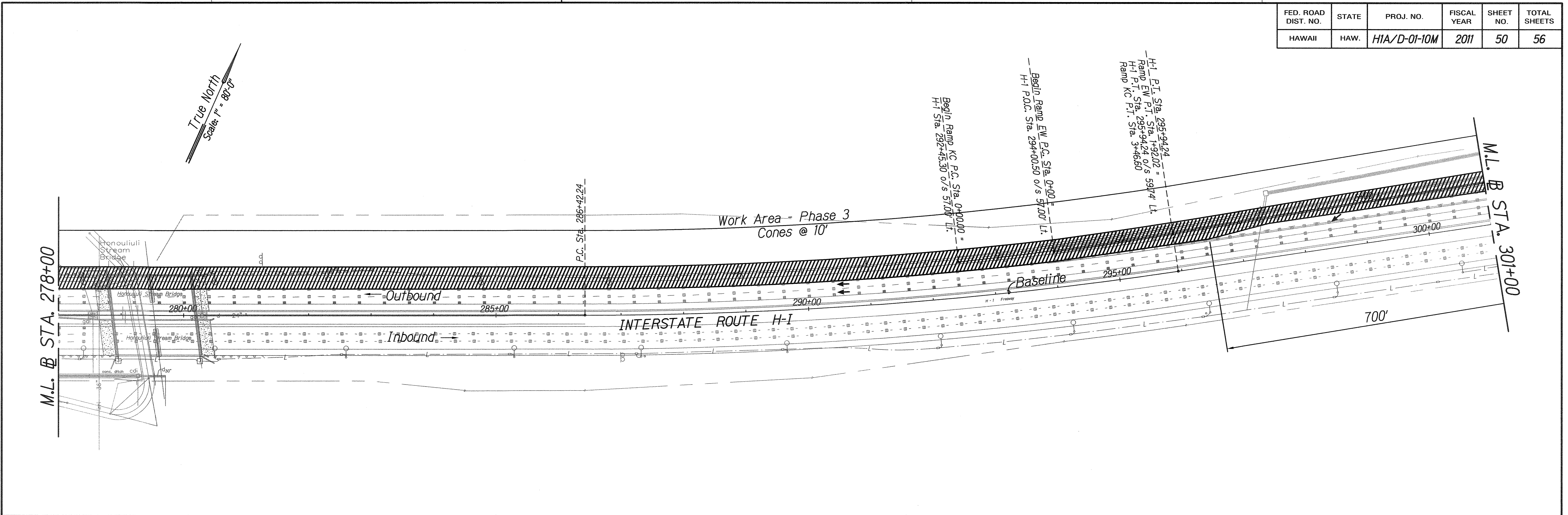
- LEGEND:**
- ▼ Sign
  - Cones or Delineator
  - ↑ Direction of traffic
  - ⇄ Flashing arrow signal
  - ▨ Proposed work area

**PHASE - 3 NORTH / SOUTH ROAD INTERCHANGE TO KUNIA INTERCHANGE (OUTBOUND)**  
 Scale: 1" = 80'-0"



STATE OF HAWAII  
 DEPARTMENT OF TRANSPORTATION  
 HIGHWAYS DIVISION  
**TRAFFIC CONTROL PLAN**  
**PHASE 3 (OUTBOUND)**  
 Interstate Route H-1  
 Freeway Lighting System Reconductoring  
 Makakilo Interchange to Kunia Interchange  
 Project No. HIA/D-01-10M  
 Scale: 1" = 80'-0" Date: August, 2010  
 SHEET No. T-12 OF 19 SHEETS

FED. ROAD DIST. NO.	STATE	PROJ. NO.	FISCAL YEAR	SHEET NO.	TOTAL SHEETS
HAWAII	HAW.	HIA/D-01-10M	2011	50	56



DATE	_____
SURVEY PLOTTED BY	_____
DRAWN BY	_____
TRACED BY	_____
NOTE BOOK	_____
QUANTITIES BY	_____
CHECKED BY	_____
N.	_____

- LEGEND:**
- ▼ Sign
  - Cones or Delineator
  - ↑ Direction of traffic
  - ⬇ Flashing arrow signal
  - ▨ Proposed work area

**PHASE - 3 NORTH / SOUTH ROAD INTERCHANGE TO KUNIA INTERCHANGE (OUTBOUND)**  
 Scale: 1" = 80'-0"

JOHN K. NISHIMURA  
 LICENSED PROFESSIONAL ENGINEER  
 No. 4920-C  
 HAWAII, U.S.A.

This work was prepared by me or under my supervision.

*John Nishimura*  
 FUKUNAGA AND ASSOCIATES, INC.  
 LICENSE EXPIRATION DATE: APRIL 30, 2012

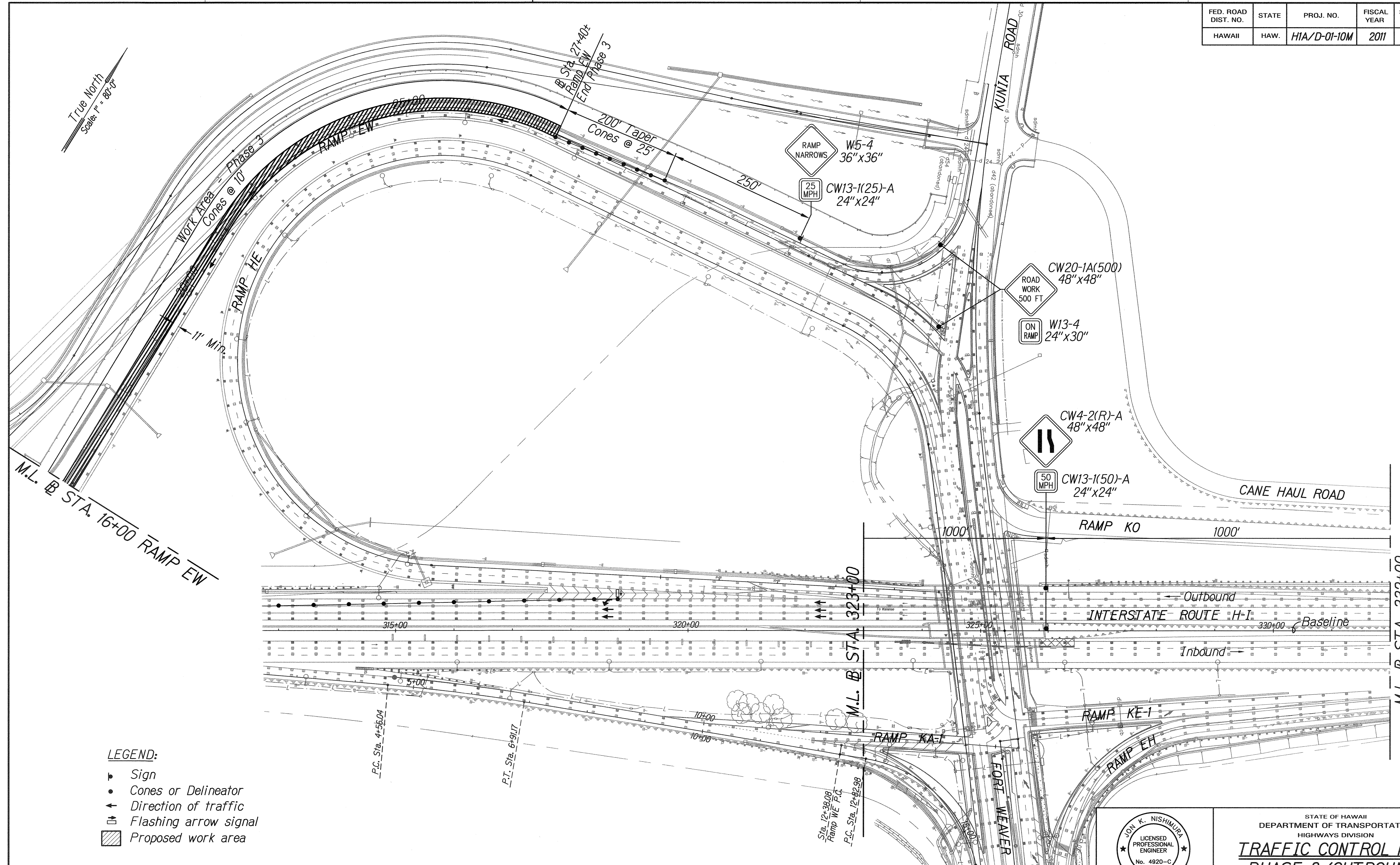
STATE OF HAWAII  
 DEPARTMENT OF TRANSPORTATION  
 HIGHWAYS DIVISION

**TRAFFIC CONTROL PLAN  
 PHASE 3 (OUTBOUND)**

Interstate Route H-1  
 Freeway Lighting System Reconductoring  
 Makakilo Interchange to Kunia Interchange  
 Project No. HIA/D-01-10M  
 Scale: 1" = 80'-0" Date: August, 2010

SHEET No. 7-13 OF 19 SHEETS

FED. ROAD DIST. NO.	STATE	PROJ. NO.	FISCAL YEAR	SHEET NO.	TOTAL SHEETS
HAWAII	HAW.	H1A/D-01-10M	2011	51	56



- LEGEND:**
- ▲ Sign
  - Cones or Delineator
  - ↑ Direction of traffic
  - ⚡ Flashing arrow signal
  - ▨ Proposed work area

SURVEY PLOTTED BY	DATE
DRAWN BY	
DESIGNED BY	
NOTE BOOK	
QUANTITIES BY	
CHECKED BY	
No.	

**PHASE - 3 NORTH / SOUTH ROAD INTERCHANGE TO KUNIA INTERCHANGE (OUTBOUND)**  
 Scale: 1" = 80'-0"

JOY K. NISHIMURA  
 LICENSED PROFESSIONAL ENGINEER  
 No. 4920-C  
 HAWAII, USA

This work was prepared by me or under my supervision.

*[Signature]*  
 FUKUNAGA AND ASSOCIATES, INC.  
 LICENSE EXPIRATION DATE:  
 APRIL 30, 2012

STATE OF HAWAII  
 DEPARTMENT OF TRANSPORTATION  
 HIGHWAYS DIVISION

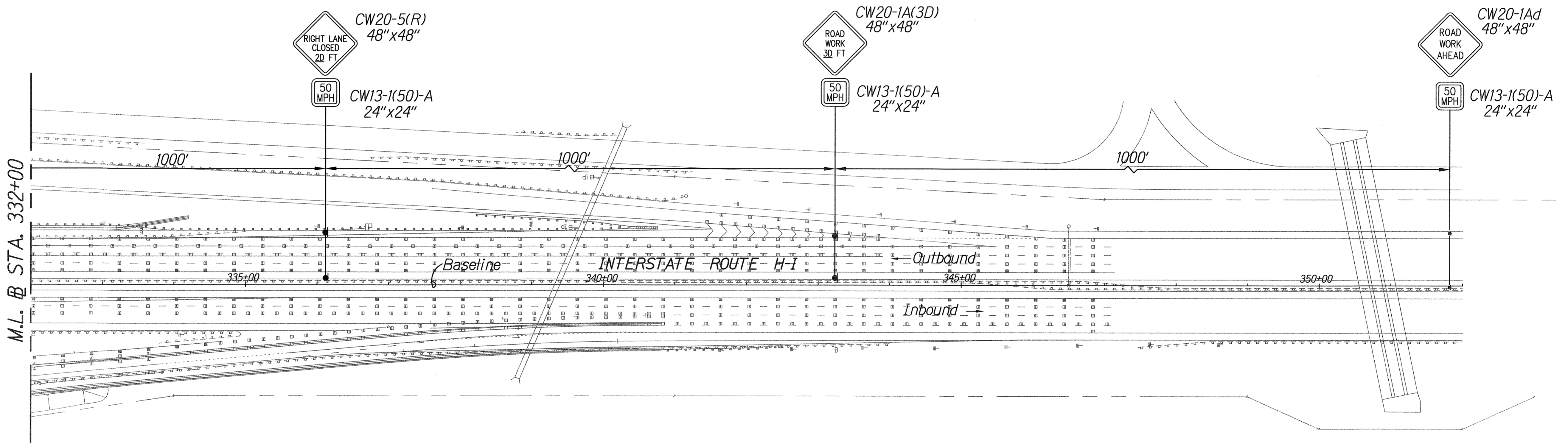
**TRAFFIC CONTROL PLAN  
 PHASE 3 (OUTBOUND)**

Interstate Route H-1  
 Freeway Lighting System Reconductoring  
 Makakilo Interchange to Kunia Interchange  
 Project No. H1A/D-01-10M  
 Scale: 1" = 80'-0" Date: August, 2010

SHEET No. T-14 OF 19 SHEETS

FED. ROAD DIST. NO.	STATE	PROJ. NO.	FISCAL YEAR	SHEET NO.	TOTAL SHEETS
HAWAII	HAW.	HIA/D-01-10M	2011	52	56

True North  
Scale: 1" = 80'-0"



- LEGEND:**
- Sign
  - Cones or Delineator
  - ↑ Direction of traffic
  - ⚡ Flashing arrow signal
  - ▨ Proposed work area

**PHASE - 3 NORTH / SOUTH ROAD INTERCHANGE TO KUNIA INTERCHANGE (OUTBOUND)**  
Scale: 1" = 80'-0"

SURVEY PLOTTED BY	DATE
DRAWN BY	
TRACED BY	
NOTE BOOK	
QUANTITIES BY	
CHECKED BY	
No.	

This work was prepared by me or under my supervision.

*Joy K. Nishimura*  
FUKUNAGA AND ASSOCIATES, INC.  
LICENSE EXPIRATION DATE: APRIL 30, 2012

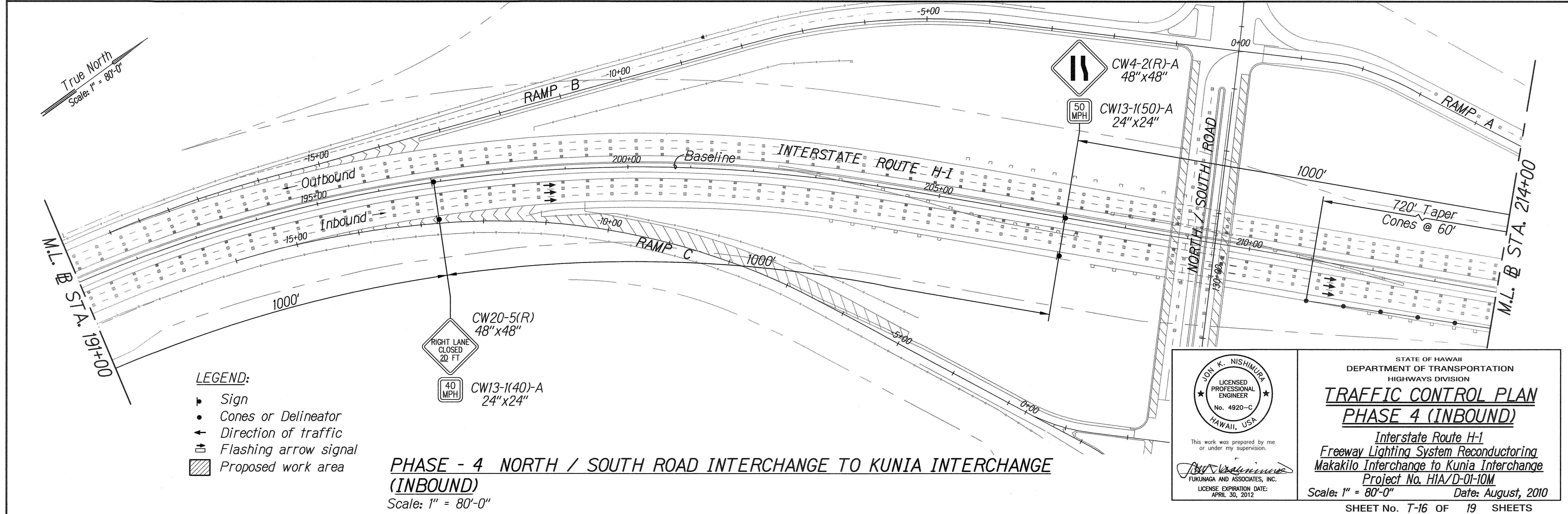
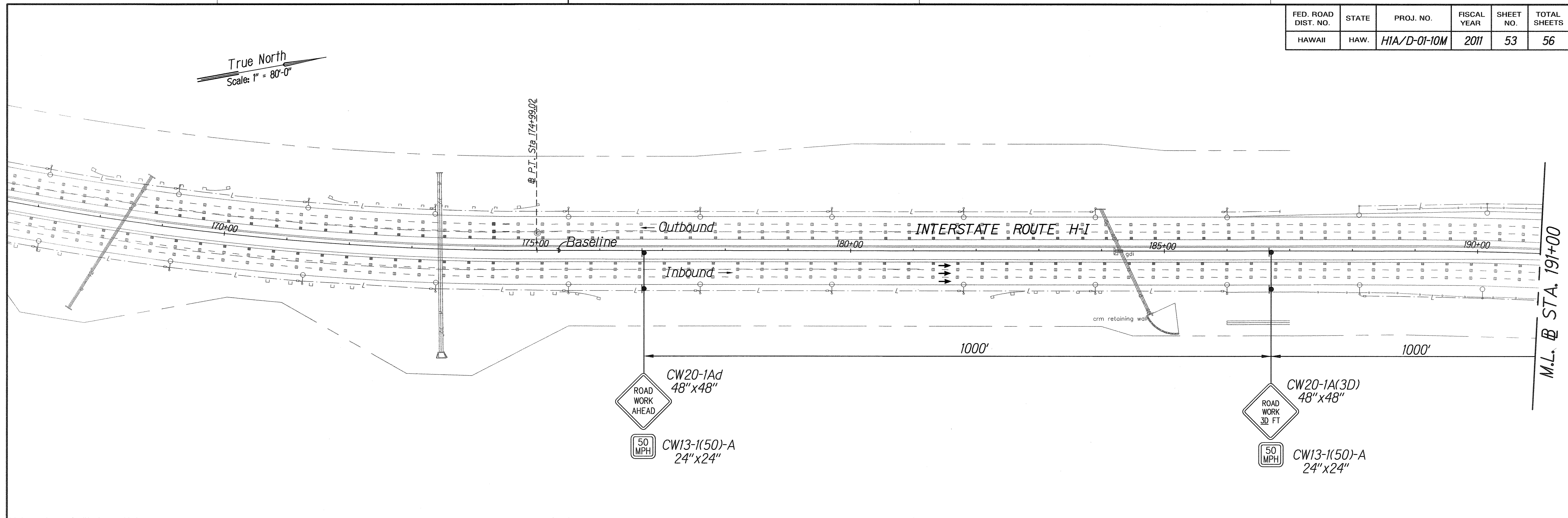
STATE OF HAWAII  
DEPARTMENT OF TRANSPORTATION  
HIGHWAYS DIVISION

**TRAFFIC CONTROL PLAN**  
**PHASE 3 (OUTBOUND)**

*Interstate Route H-1*  
*Freeway Lighting System Reconductoring*  
*Makalo Interchange to Kunia Interchange*  
Project No. HIA/D-01-10M  
Date: August, 2010

Scale: 1" = 80'-0"      SHEET No. T-15 OF 19 SHEETS

FED. ROAD DIST. NO.	STATE	PROJ. NO.	FISCAL YEAR	SHEET NO.	TOTAL SHEETS
HAWAII	HAW.	HIA/D-01-10M	2011	53	56



- LEGEND:**
- ▶ Sign
  - Cones or Delineator
  - ← Direction of traffic
  - ⚡ Flashing arrow signal
  - ▨ Proposed work area

**PHASE - 4 NORTH / SOUTH ROAD INTERCHANGE TO KUNIA INTERCHANGE (INBOUND)**  
 Scale: 1" = 80'-0"

SURVEY PLOTTED BY	DATE
DRAWN BY	
TRACED BY	
NOTE BOOK	
QUANTITIES BY	
CHECKED BY	

JOHN K. NISHIMURA  
 LICENSED PROFESSIONAL ENGINEER  
 No. 4920-C  
 HAWAII, USA

This work was prepared by me or under my supervision.

FUKUNAGA AND ASSOCIATES, INC.  
 LICENSE EXPIRATION DATE: APRIL 30, 2012

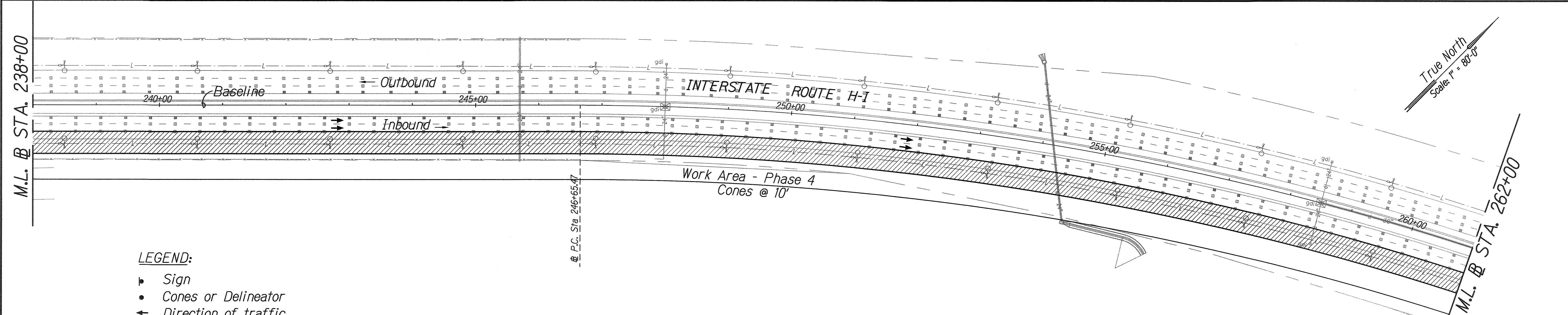
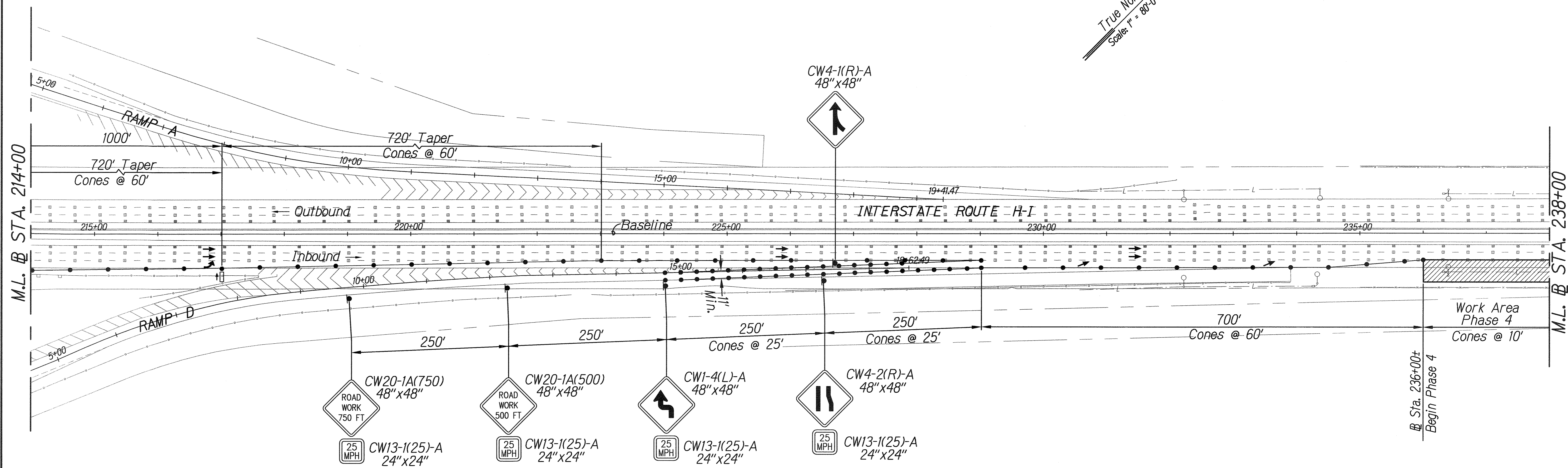
STATE OF HAWAII  
 DEPARTMENT OF TRANSPORTATION  
 HIGHWAYS DIVISION

**TRAFFIC CONTROL PLAN  
 PHASE 4 (INBOUND)**

Interstate Route H-1  
 Freeway Lighting System Reconductoring  
 Makalo Interchange to Kunia Interchange  
 Project No. HIA/D-01-10M  
 Scale: 1" = 80'-0" Date: August, 2010

SHEET No. 7-16 OF 19 SHEETS

FED. ROAD DIST. NO.	STATE	PROJ. NO.	FISCAL YEAR	SHEET NO.	TOTAL SHEETS
HAWAII	HAW.	HIA/D-01-10M	2011	54	56



- LEGEND:**
- ▲ Sign
  - Cones or Delineator
  - Direction of traffic
  - ⚡ Flashing arrow signal
  - ▨ Proposed work area

**PHASE - 4 NORTH / SOUTH ROAD INTERCHANGE TO KUNIA INTERCHANGE  
(INBOUND)**  
Scale: 1" = 80'-0"

SURVEY PLOTTED BY	DATE
DRAWN BY	
TRACED BY	
NOTE BOOK	
QUANTITIES BY	
CHECKED BY	
N.	

JOJO K. NISHIMURA  
LICENSED PROFESSIONAL ENGINEER  
No. 4920-C  
HAWAII, USA

This work was prepared by me or under my supervision.

*W. Yamamoto*  
FUKUNAGA AND ASSOCIATES, INC.  
LICENSE EXPIRATION DATE:  
APRIL 30, 2012

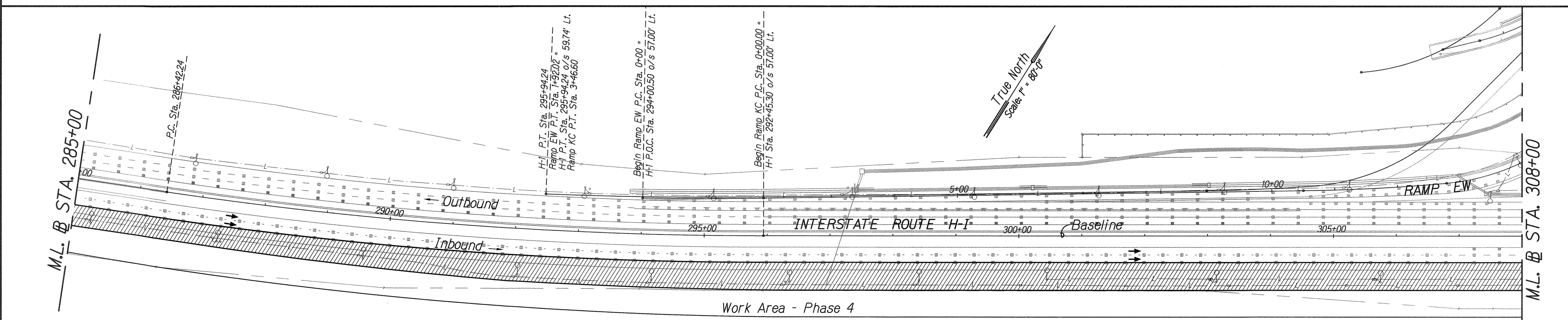
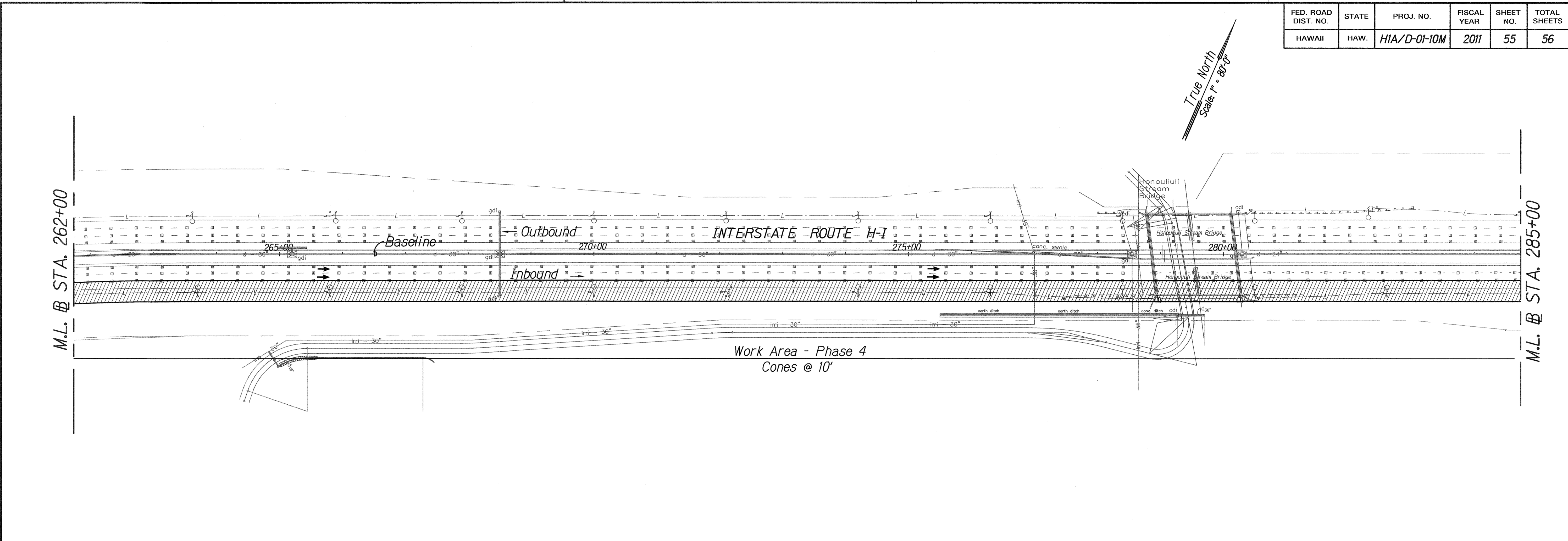
STATE OF HAWAII  
DEPARTMENT OF TRANSPORTATION  
HIGHWAYS DIVISION

**TRAFFIC CONTROL PLAN  
PHASE 4 (INBOUND)**

Interstate Route H-1  
Freeway Lighting System Reconductoring  
Makilo Interchange to Kunia Interchange  
Project No. HIA/D-01-10M  
Scale: 1" = 80'-0" Date: August, 2010

SHEET No. T-17 OF 19 SHEETS

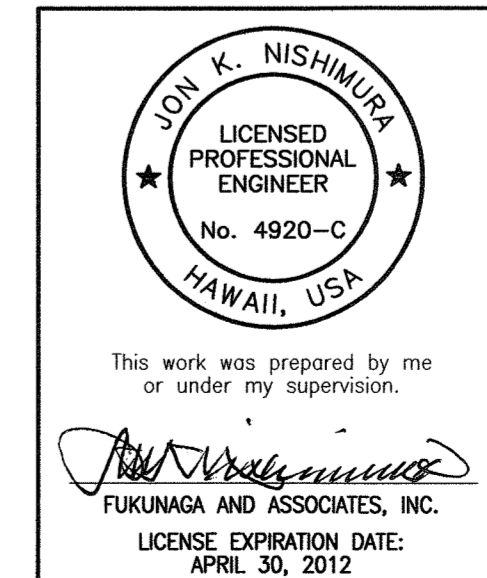
FED. ROAD DIST. NO.	STATE	PROJ. NO.	FISCAL YEAR	SHEET NO.	TOTAL SHEETS
HAWAII	HAW.	HIA/D-01-10M	2011	55	56



SURVEY PLOTTED BY	DATE
DRAWN BY	
TRACED BY	
NOTE BOOK	
QUANTITIES BY	
CHECKED BY	
N.	

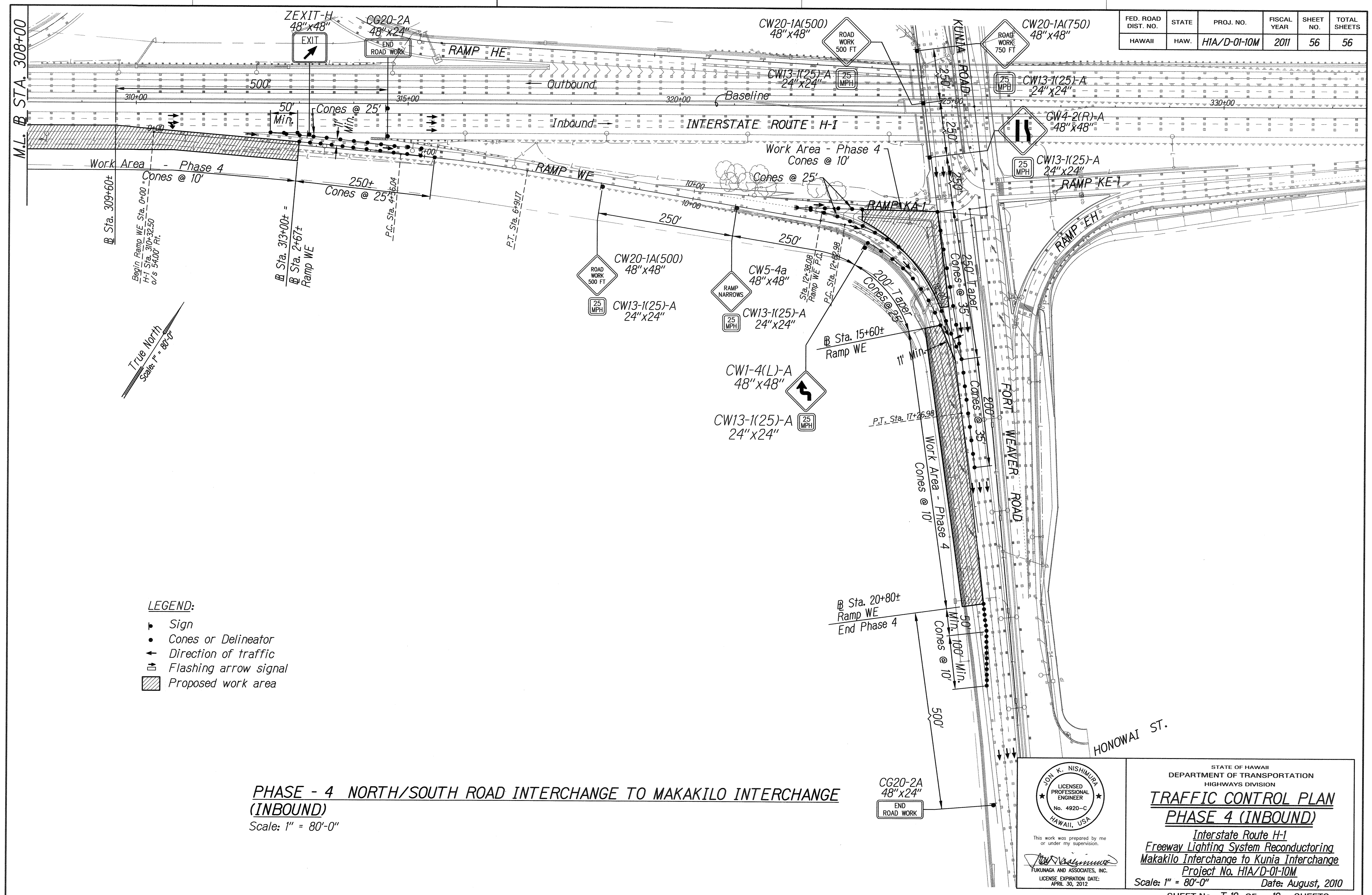
- LEGEND:**
- ▼ Sign
  - Cones or Delineator
  - ← Direction of traffic
  - ⚡ Flashing arrow signal
  - ▨ Proposed work area

**PHASE - 4 NORTH/SOUTH ROAD INTERCHANGE TO MAKAKILO INTERCHANGE (INBOUND)**  
 Scale: 1" = 80'-0"



STATE OF HAWAII  
 DEPARTMENT OF TRANSPORTATION  
 HIGHWAYS DIVISION  
**TRAFFIC CONTROL PLAN**  
**PHASE 4 (INBOUND)**  
*Interstate Route H-1*  
*Freeway Lighting System Reconductoring*  
*Makakilo Interchange to Kunia Interchange*  
 Project No. HIA/D-01-10M  
 Scale: 1" = 80'-0" Date: August, 2010

FED. ROAD DIST. NO.	STATE	PROJ. NO.	FISCAL YEAR	SHEET NO.	TOTAL SHEETS
HAWAII	HAW.	HIA/D-01-10M	2011	56	56



True North  
Scale: 1" = 80'-0"

- LEGEND:**
- ▲ Sign
  - Cones or Delineator
  - Direction of traffic
  - ⚡ Flashing arrow signal
  - ▨ Proposed work area

**PHASE - 4 NORTH/SOUTH ROAD INTERCHANGE TO MAKAKILO INTERCHANGE (INBOUND)**  
Scale: 1" = 80'-0"

SURVEY PLOTTED BY	DATE
DESIGNED BY	
TRACED BY	
NOTE BOOK	
QUANTITIES BY	
CHECKED BY	
No.	

This work was prepared by me or under my supervision.

STATE OF HAWAII  
 DEPARTMENT OF TRANSPORTATION  
 HIGHWAYS DIVISION  
**TRAFFIC CONTROL PLAN**  
**PHASE 4 (INBOUND)**  
 Interstate Route H-1  
 Freeway Lighting System Reconductoring  
 Makakilo Interchange to Kunia Interchange  
 Project No. HIA/D-01-10M  
 Scale: 1" = 80'-0" Date: August, 2010  
 SHEET No. T-19 OF 19 SHEETS