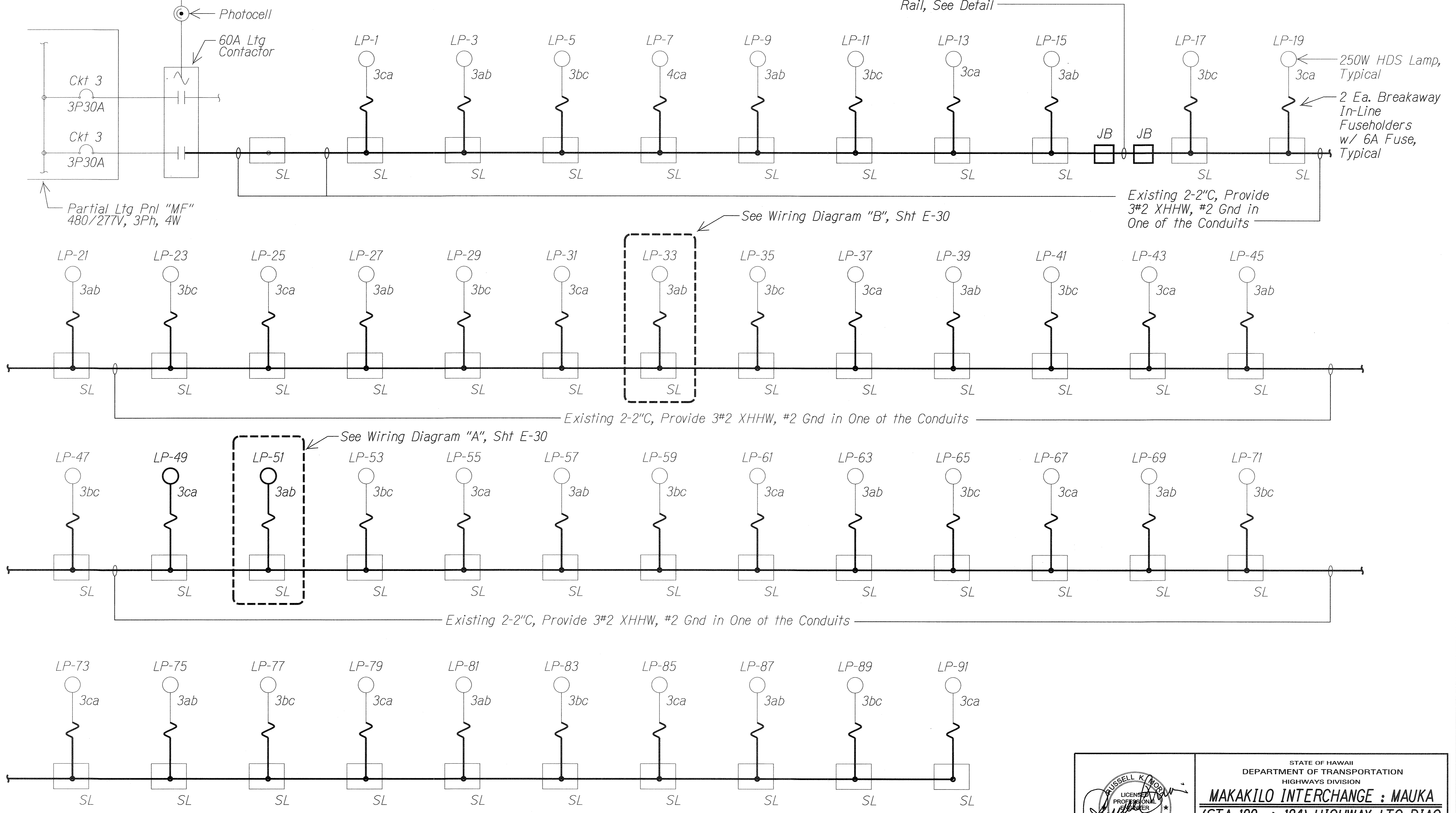


FED. ROAD DIST. NO.	STATE	PROJ. NO.	FISCAL YEAR	SHEET NO.	TOTAL SHEETS
HAWAII	HAW.	H1A/D-01-10M	2011	32	56

Remove Existing 2-2" Conduits and Mounting brackets. Provide 1-2" PVC Coated Galv Rigid Steel Conduit w/ 3#2 XHHW, #2 Gnd. Mtd on Guard Rail, See Detail



SURVEY PLOTTED BY	DATE
DRAWN BY	
DESIGNED BY	
NOTED BY	
CHECKED BY	
QUANTITIES BY	
DATE	

Notes:
 — Light lines denote existing condition.
 — Bold lines denote new work.

STATE OF HAWAII
 DEPARTMENT OF TRANSPORTATION
 HIGHWAYS DIVISION

MAKAKILO INTERCHANGE : MAUKA
 (STA 100 → 184) HIGHWAY LTG DIAG

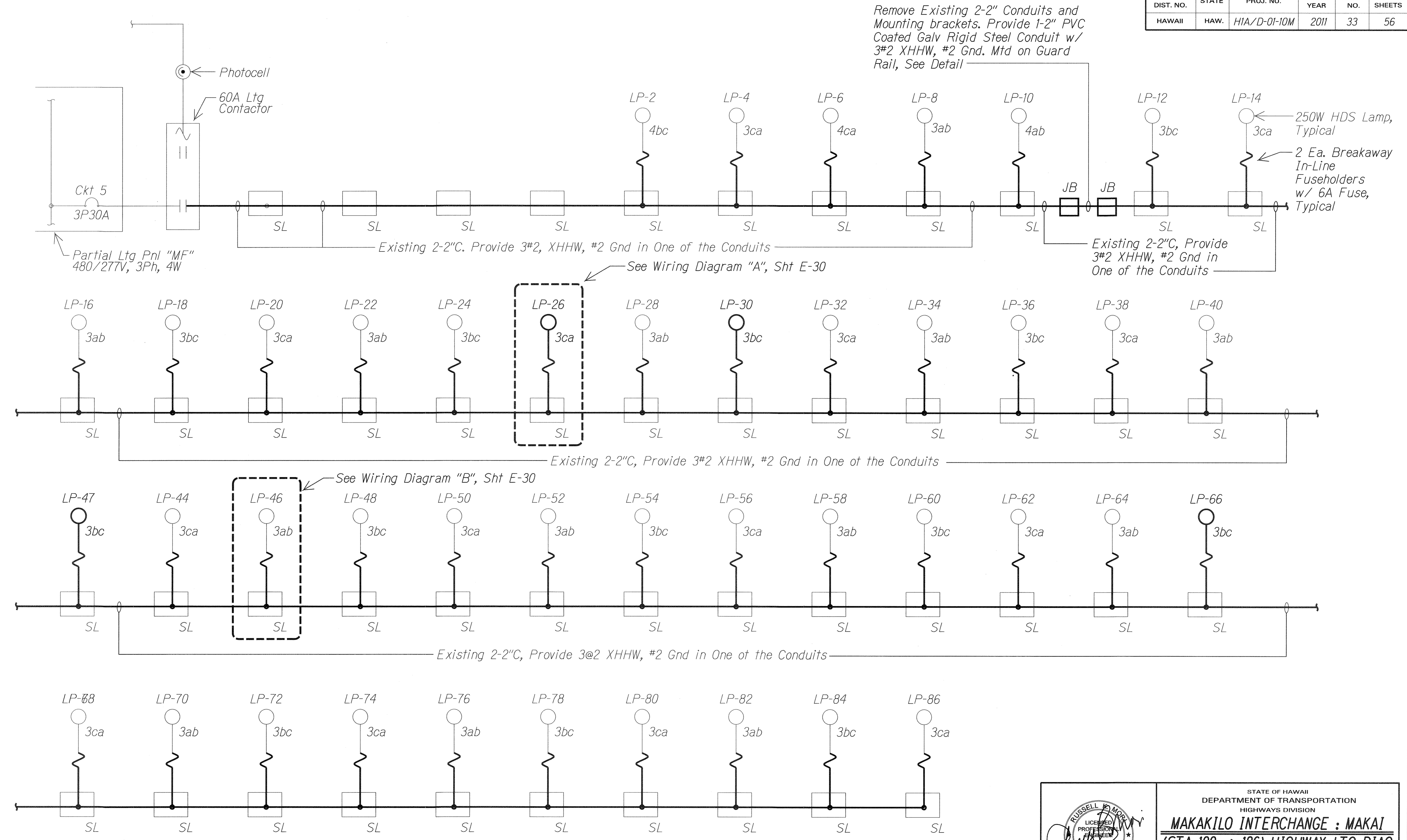
Interstate Route H-1
 Freeway Lighting System Reconductoring
 Makakilo Interchange to Kunia Interchange
 Project No. H1A/D-01-10M

Not to Scale Date: Aug. 2010

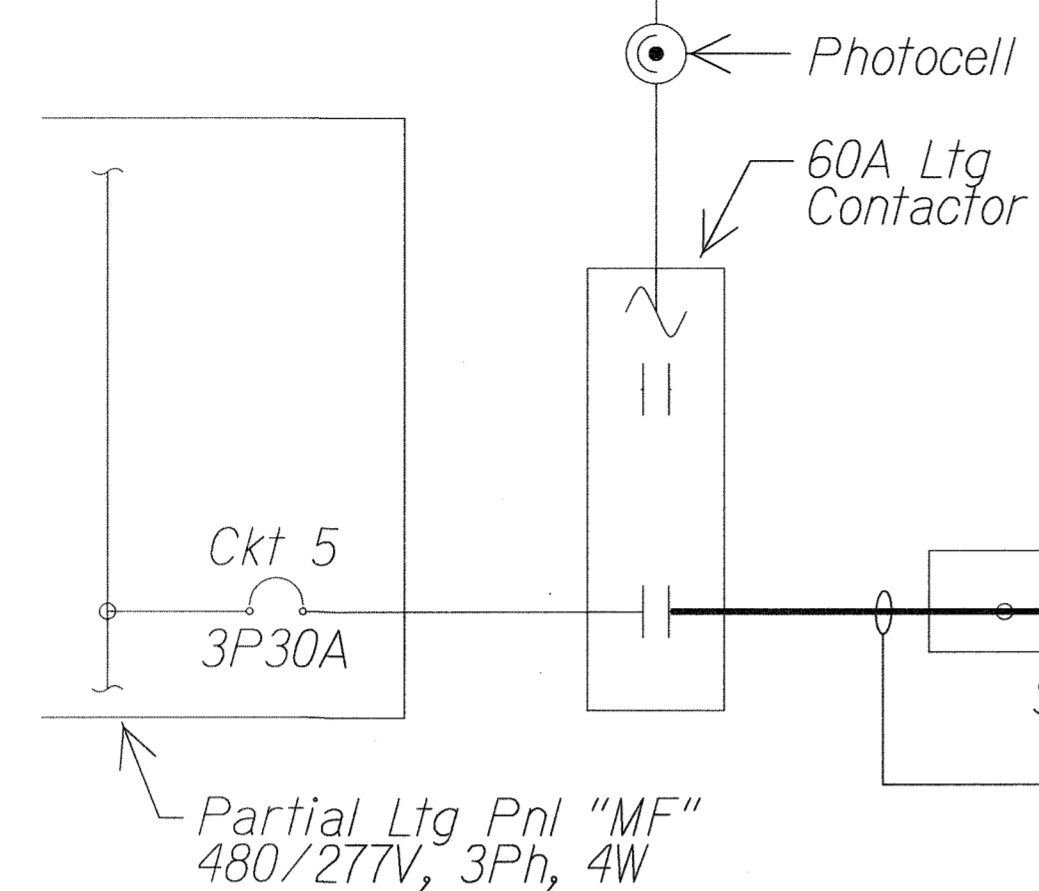
SHEET No.E-26 OF 56 SHEETS

10201-E26-1tg-01.dwg 8/12/2010 10:34:36 AM

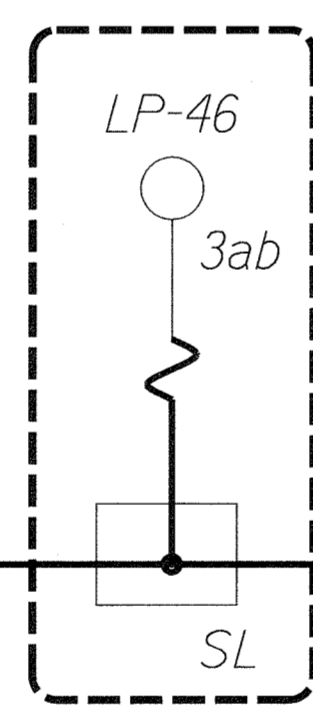
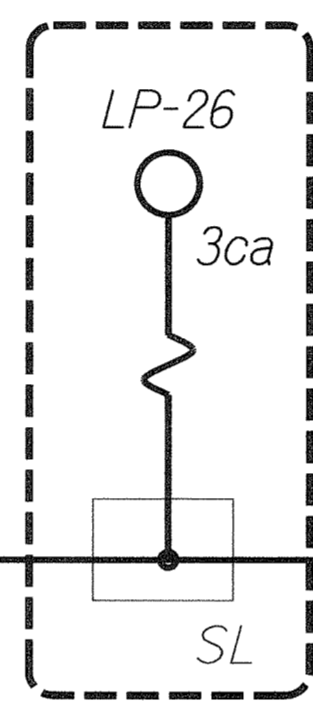
FED. ROAD DIST. NO.	STATE	PROJ. NO.	FISCAL YEAR	SHEET NO.	TOTAL SHEETS
HAWAII	HAW.	HIA/D-01-10M	2011	33	56



Remove Existing 2-2" Conduits and Mounting brackets. Provide 1-2" PVC Coated Galv Rigid Steel Conduit w/ 3#2 XHHW, #2 Gnd. Mtd on Guard Rail, See Detail

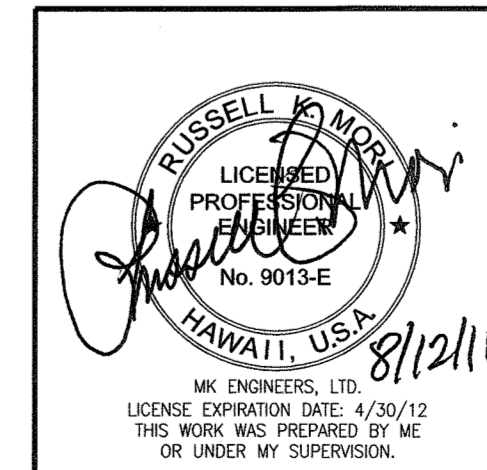


250W HDS Lamp, Typical
2 Ea. Breakaway In-Line Fuseholders w/ 6A Fuse, Typical



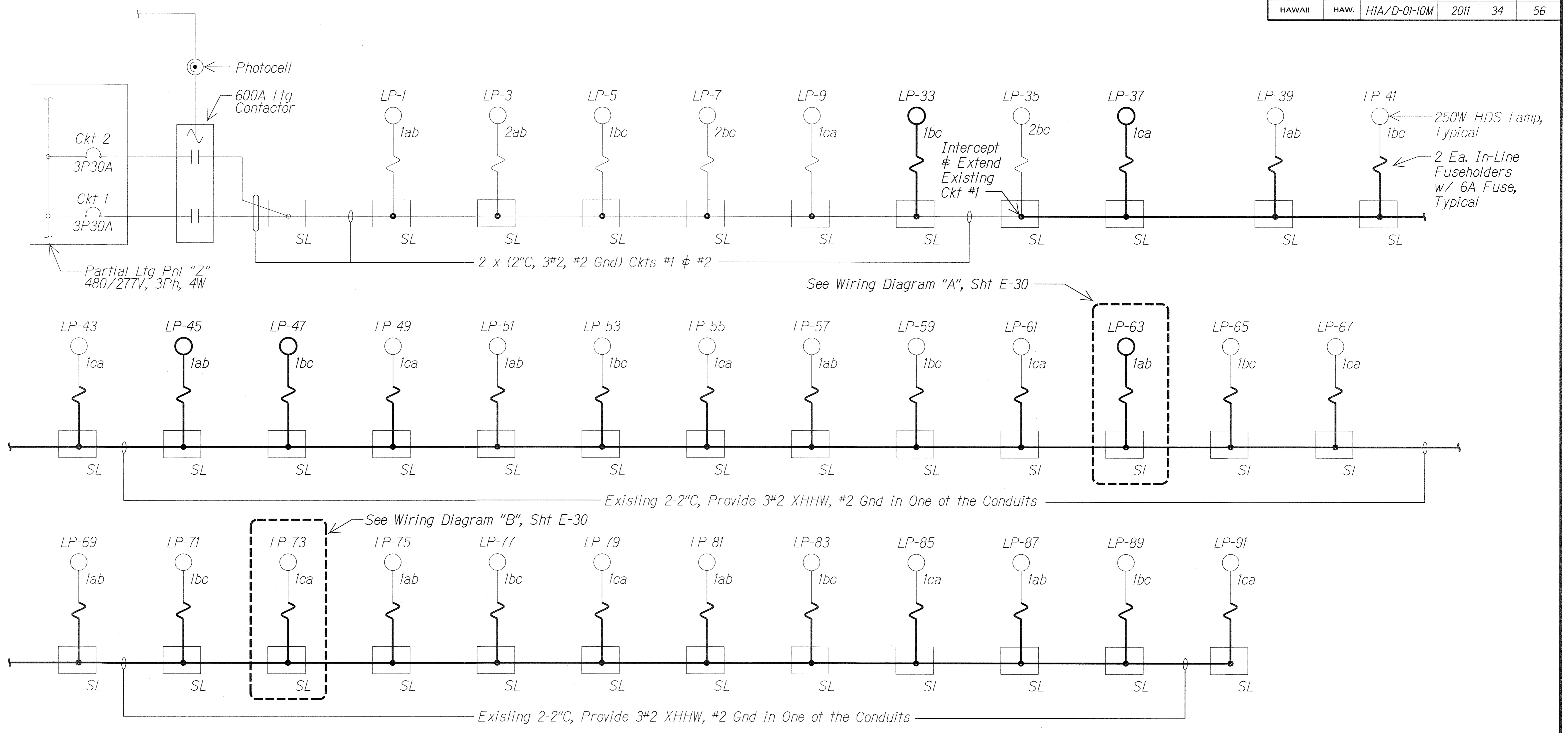
Notes:
 — Light lines denote existing condition.
 — Bold lines denote new work.

SURVEY PLOTTED BY	DATE
DRAWN BY	
DESIGNED BY	
QUANTITIES BY	
CHECKED BY	
NO.	



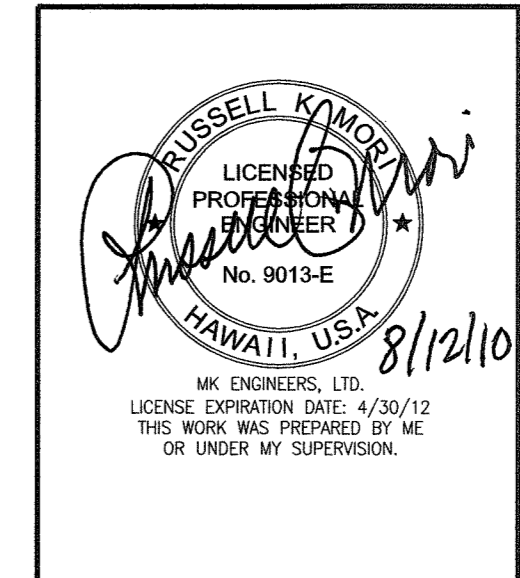
STATE OF HAWAII
 DEPARTMENT OF TRANSPORTATION
 HIGHWAYS DIVISION
MAKAKILO INTERCHANGE : MAKAI
(STA 100 → 186) HIGHWAY LTG DIAG
 Interstate Route H-1
 Freeway Lighting System Reconstructing
 Makakilo Interchange to Kunia Interchange
 Project No. HIA/D-01-10M
 Not to Scale Date: Aug. 2010
 SHEET No. E-27 OF 56 SHEETS

FED. ROAD DIST. NO.	STATE	PROJ. NO.	FISCAL YEAR	SHEET NO.	TOTAL SHEETS
HAWAII	HAW.	H1A/D-01-10M	2011	34	56



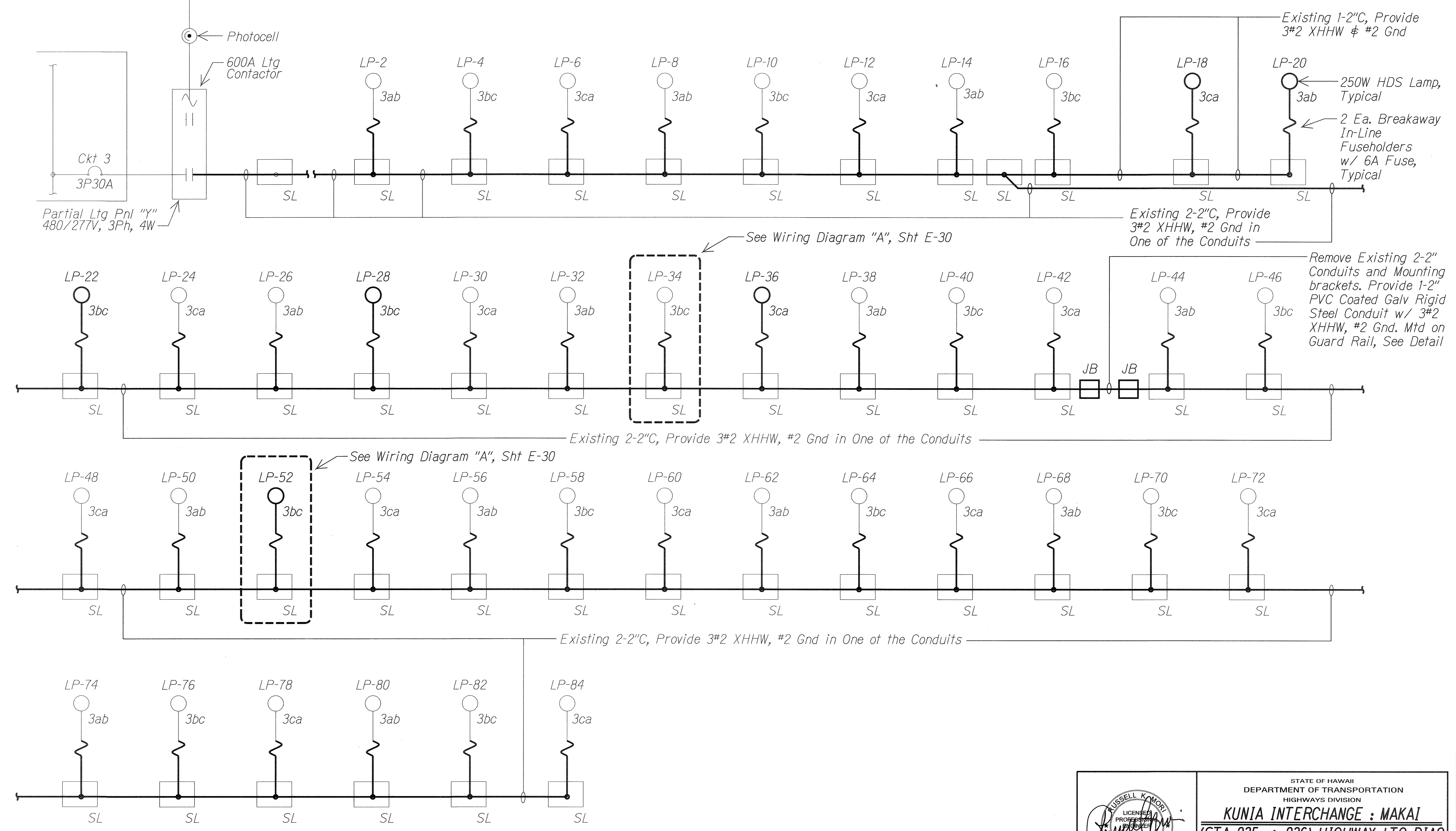
SURVEY PLOTTED BY	DATE
DRAWN BY	
TRACED BY	
NOTE BOOK	
QUANTITIES BY	
CHECKED BY	
N.	

Notes:
 — Light lines denote existing condition.
 — Bold lines denote new work.



STATE OF HAWAII
 DEPARTMENT OF TRANSPORTATION
 HIGHWAYS DIVISION
KUNIA INTERCHANGE : MAUKA
(STA 295 → 236) HIGHWAY LTG DIAG
 Interstate Route H-1
 Freeway Lighting System Reconductoring
 Makakilo Interchange to Kunia Interchange
 Project No. H1A/D-01-10M
 Not to Scale Date: Aug. 2010
 SHEET No. E-28 OF 56 SHEETS

FED. ROAD DIST. NO.	STATE	PROJ. NO.	FISCAL YEAR	SHEET NO.	TOTAL SHEETS
HAWAII	HAW.	H1A/D-01-10M	2011	35	56



SURVEY PLOTTED BY	DATE
DRAWN BY	
DESIGNED BY	
NOTE BOOK	
QUANTITIES BY	
CHECKED BY	
N.	

Notes:
 ——— Light lines denote existing condition.
 ——— Bold lines denote new work.

RUSSELL K. MOORE
 LICENSED PROFESSIONAL ENGINEER
 No. 9013-E
 HAWAII, U.S.A.
 8/12/10

STATE OF HAWAII
 DEPARTMENT OF TRANSPORTATION
 HIGHWAYS DIVISION

KUNIA INTERCHANGE : MAKAI
(STA 235 → 236) HIGHWAY LTG DIAG

Interstate Route H-1
 Freeway Lighting System Reconductoring
 Makakilo Interchange to Kunia Interchange
 Project No. H1A/D-01-10M

Not to Scale Date: Aug. 2010

SHEET No. E-29 OF 56 SHEETS