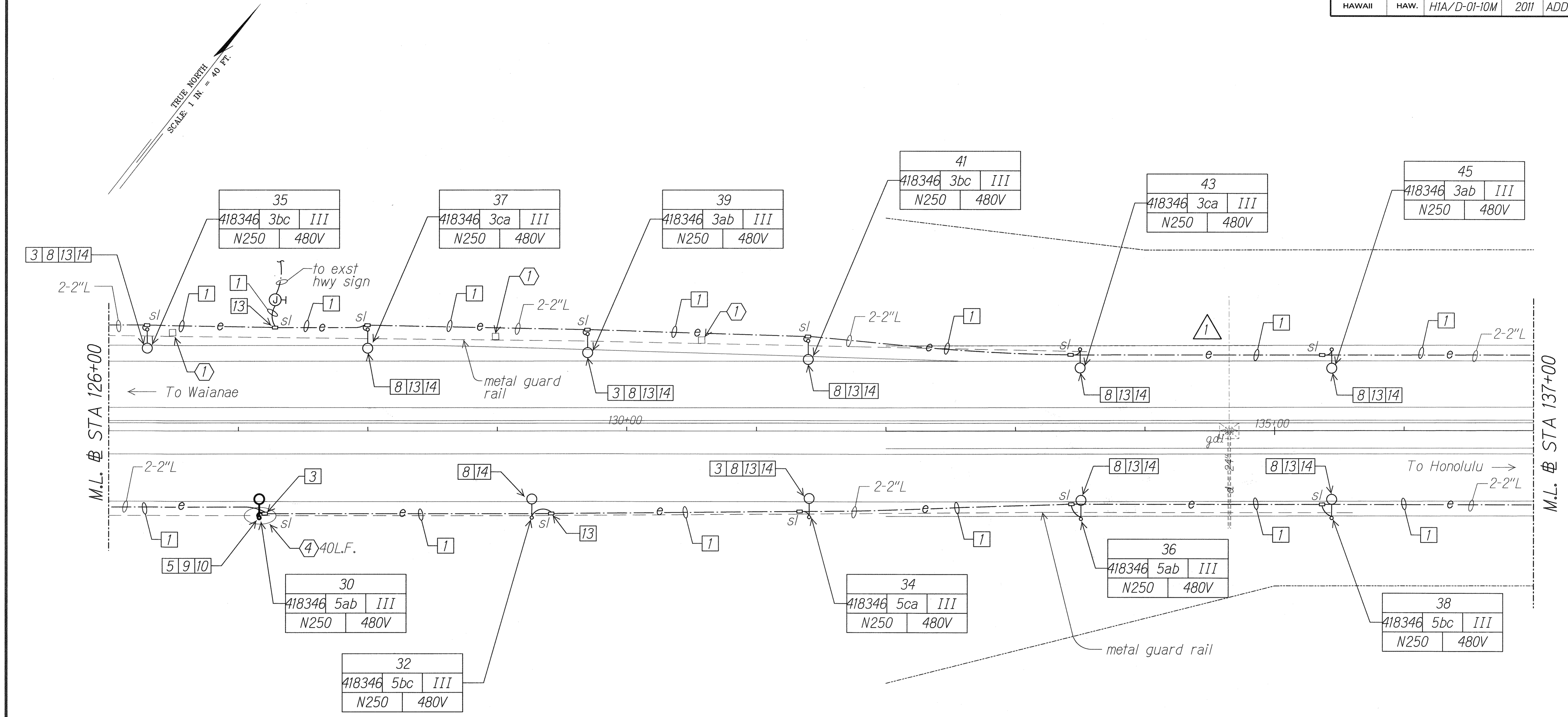


FED. ROAD DIST. NO.	STATE	PROJ. NO.	FISCAL YEAR	SHEET NO.	TOTAL SHEETS
HAWAII	HAW.	HIA/D-01-10M	2011	ADD.11	56



SURVEY PLOTTED BY _____ DATE _____
 ORIGINAL PLAN _____
 DRAWN BY _____
 CHECKED BY _____
 NOTE BOOK _____
 QUANTITIES BY _____
 CHECKED BY _____
 No. _____

11/23/10	Removed Grate Drain Inlet Protection
DATE	REVISION

MR. ENGINEERS, LTD.
 LICENSE EXPIRATION DATE: 4/30/12
 THIS WORK WAS PREPARED BY ME
 OR UNDER MY SUPERVISION.

STATE OF HAWAII
DEPARTMENT OF TRANSPORTATION
HIGHWAYS DIVISION

HIGHWAY LIGHTING PLAN

STA 126+00 TO 137+00

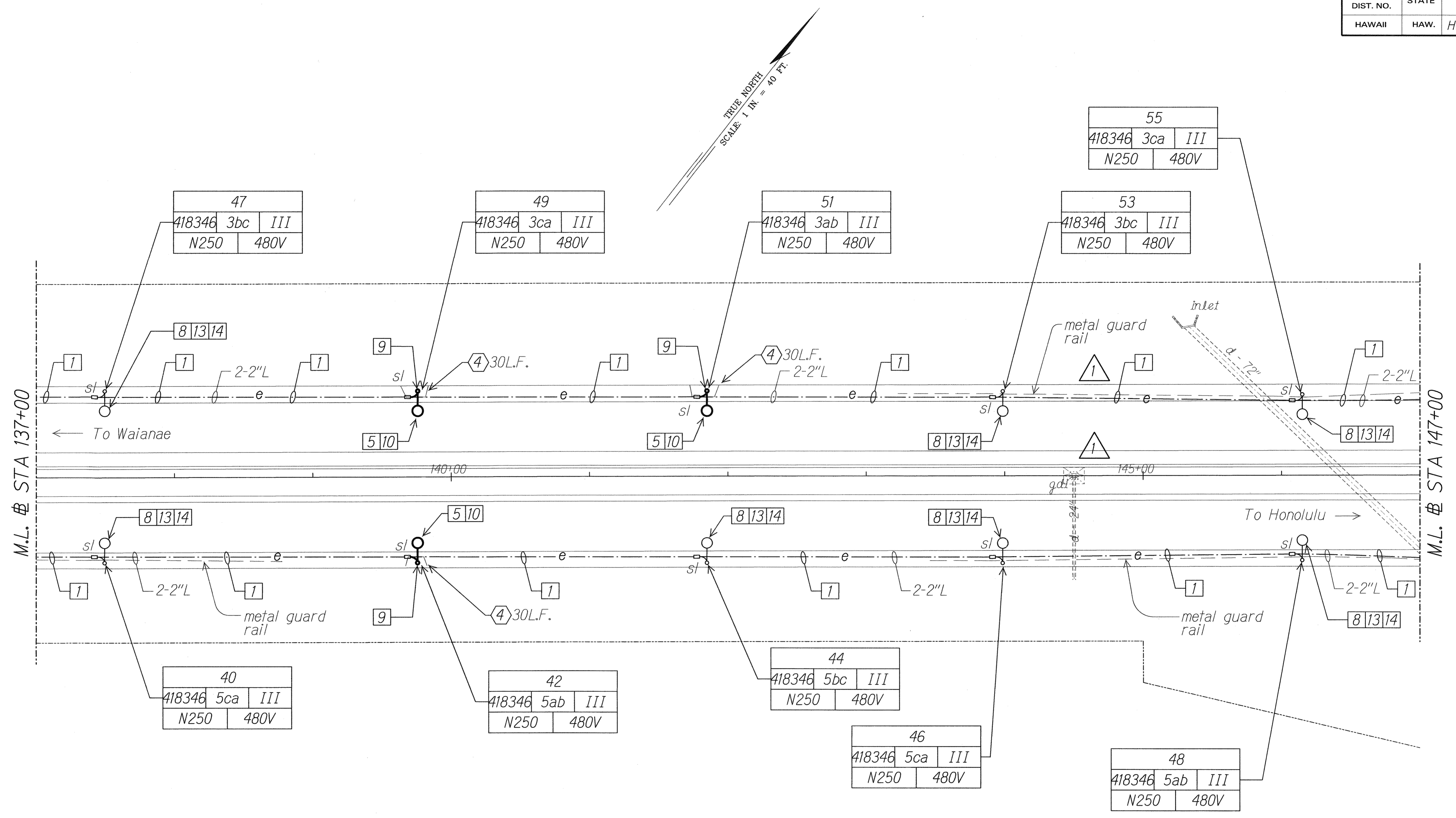
Interstate Route H-1
Freeway Lighting System Reconductoring
Makakilo Interchange to Kunia Interchange
Project No. HIA/D-01-10M

Scale: 1" = 40'-0" Date: Aug. 2010

SHEET No. E-5 OF 56 SHEETS

10201-E05-st1ed.dgn 11/23/2010 9:30:50 AM

FED. ROAD DIST. NO.	STATE	PROJ. NO.	FISCAL YEAR	SHEET NO.	TOTAL SHEETS
HAWAII	HAW.	H1A/D-01-10M	2011	ADD.12	56



TRUE NORTH
SCALE: 1 IN. = 40 FT.

SURVEY PLOTTED BY	DATE
DRAWN BY	
TRACED BY	
NOTE BOOK	
QUANTITIES BY	
CHECKED BY	
N.	

11/23/10	Removed Grate Drain Inlet Protection
DATE	REVISION

RUSSELL K. MOORE
REGISTERED PROFESSIONAL ENGINEER
No. 9013-E
HAWAII, U.S.A.
11/23/10

MR. ENGINEERS, LTD.
LICENSE EXPIRATION DATE: 4/30/12
THIS WORK WAS PREPARED BY ME OR UNDER MY SUPERVISION.

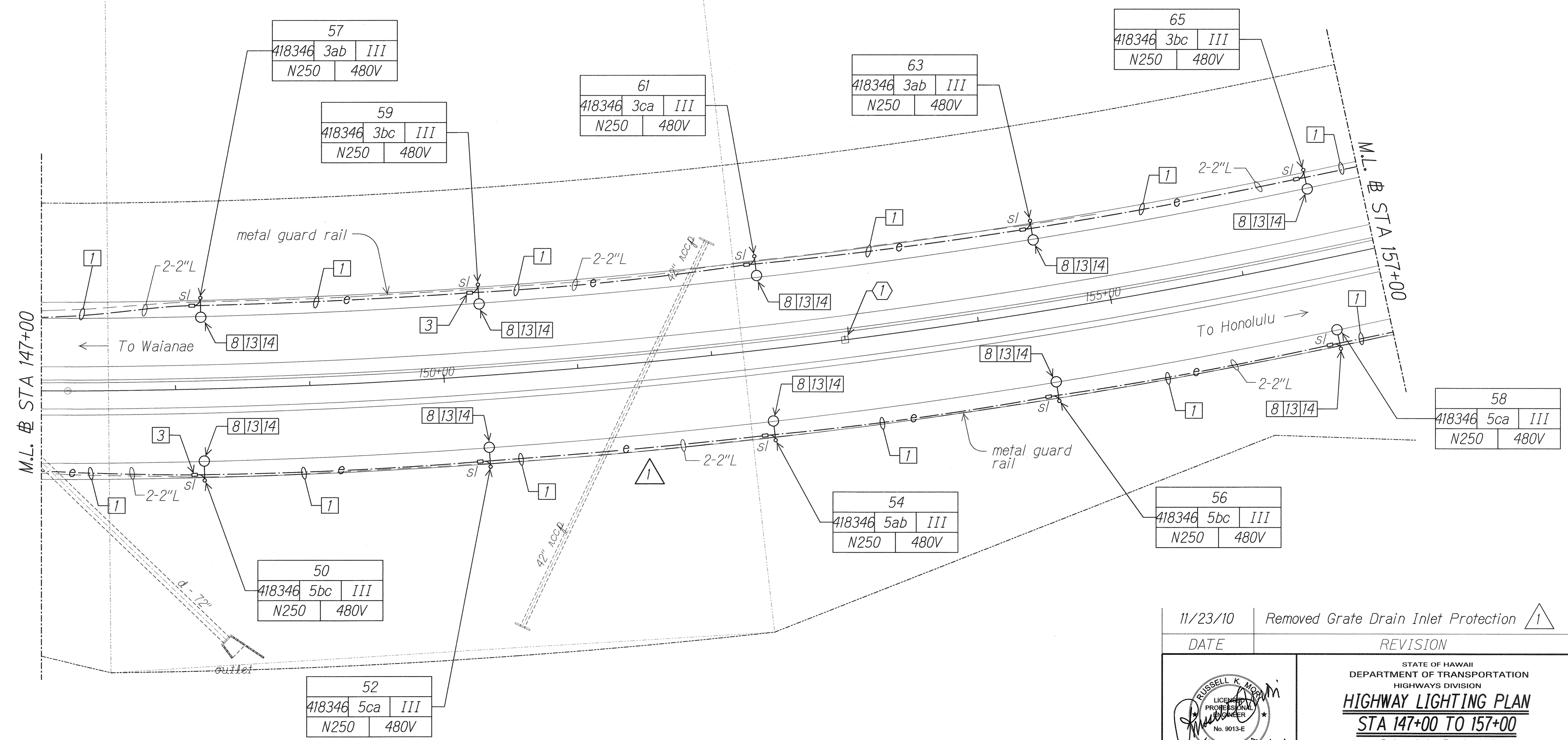
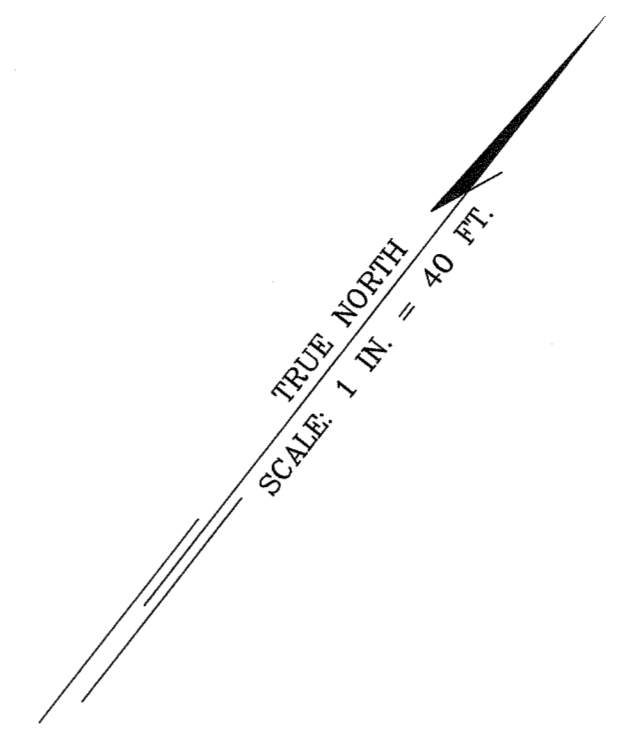
STATE OF HAWAII
DEPARTMENT OF TRANSPORTATION
HIGHWAYS DIVISION

HIGHWAY LIGHTING PLAN
STA 137+00 TO 147+00

Interstate Route H-1
Freeway Lighting System Reconductoring
Makalo Interchange to Kunia Interchange
Project No. H1A/D-01-10M
Scale: 1" = 40'-0" Date: Aug. 2010

10201-E06-siteE.dgn 11/23/2010 12:26:57 PM

FED. ROAD DIST. NO.	STATE	PROJ. NO.	FISCAL YEAR	SHEET NO.	TOTAL SHEETS
HAWAII	HAW.	H1A/D-01-10M	2011	ADD.13	56

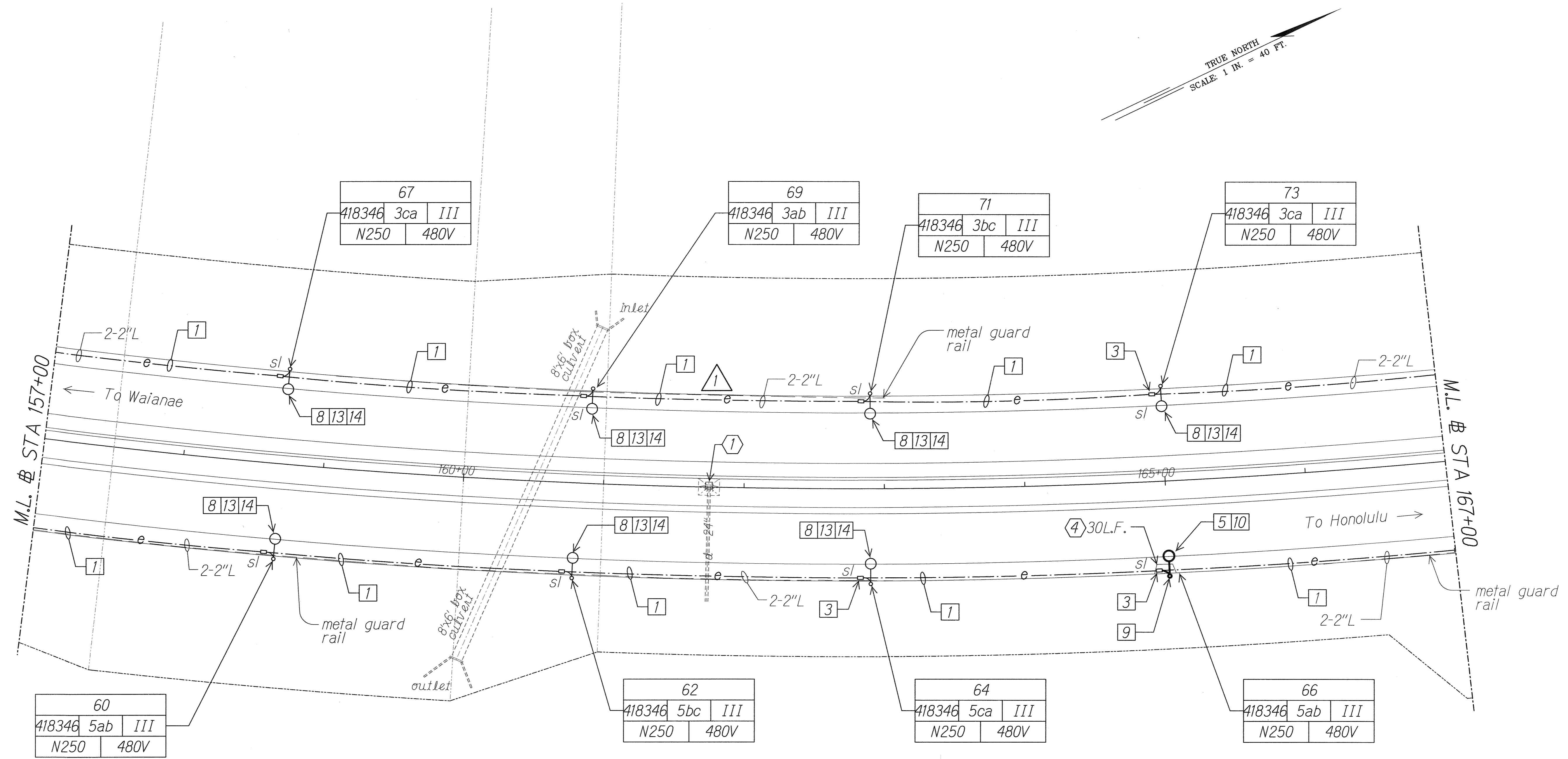
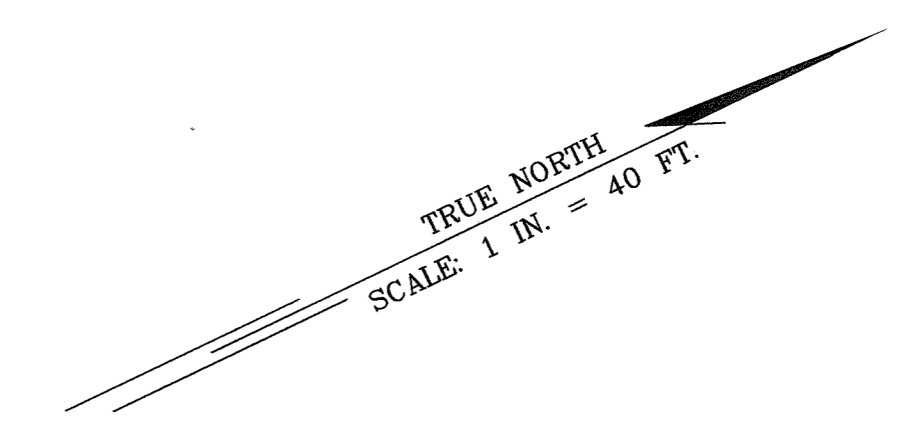


DATE	_____
SURVEY PLOTTED BY	_____
DRAWN BY	_____
TRACED BY	_____
NOTE BOOK	_____
QUANTITIES BY	_____
CHECKED BY	_____
N.	_____

11/23/10	Removed Grate Drain Inlet Protection
DATE	REVISION
STATE OF HAWAII DEPARTMENT OF TRANSPORTATION HIGHWAYS DIVISION HIGHWAY LIGHTING PLAN STA 147+00 TO 157+00 Interstate Route H-1 Freeway Lighting System Reconductoring Makakilo Interchange to Kunia Interchange Project No. H1A/D-01-10M Scale: 1" = 40'-0" Date: Aug. 2010	

10201-E07-st1ef.dgn 11/23/2010 9:35:39 AM

FED. ROAD DIST. NO.	STATE	PROJ. NO.	FISCAL YEAR	SHEET NO.	TOTAL SHEETS
HAWAII	HAW.	H1A/D-01-10M	2011	ADD.14	56



67
418346 3ca III
N250 480V

69
418346 3ab III
N250 480V

71
418346 3bc III
N250 480V

73
418346 3ca III
N250 480V

60
418346 5ab III
N250 480V

62
418346 5bc III
N250 480V

64
418346 5ca III
N250 480V

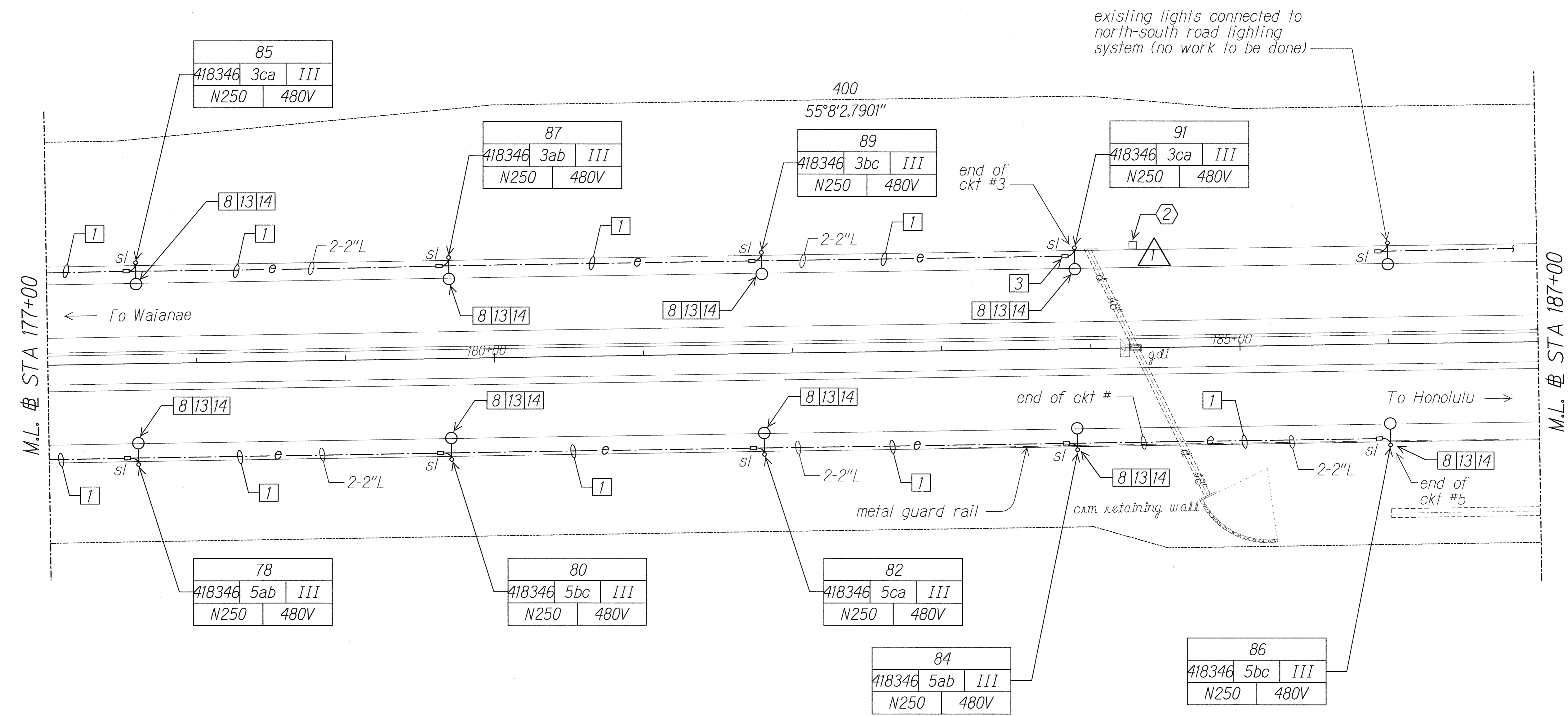
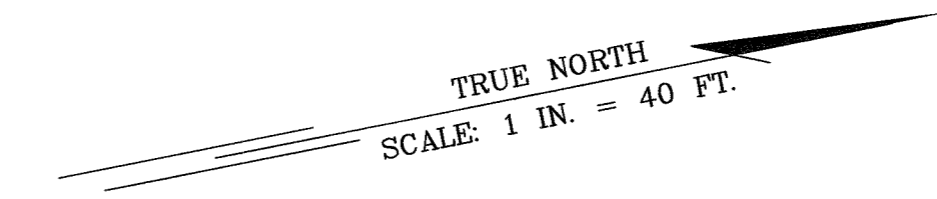
66
418346 5ab III
N250 480V

SURVEY PLOTTED BY	DATE
DRAWN BY	
CHECKED BY	
NOTE BOOK	
CHECKED BY	

11/23/10	Removed Grate Drain Inlet Protection
DATE	REVISION
STATE OF HAWAII DEPARTMENT OF TRANSPORTATION HIGHWAYS DIVISION HIGHWAY LIGHTING PLAN STA 157+00 TO 167+00 Interstate Route H-1 Freeway Lighting System Reconductoring Makakilo Interchange to Kunia Interchange Project No. H1A/D-01-10M Scale: 1" = 40'-0" Date: Aug. 2010	

10201-E08-site6.dgn 11/23/2010 9:36:25 AM

FED. ROAD DIST. NO.	STATE	PROJ. NO.	FISCAL YEAR	SHEET NO.	TOTAL SHEETS
HAWAII	HAW.	H1A/D-01-10M	2011	ADD.16	56

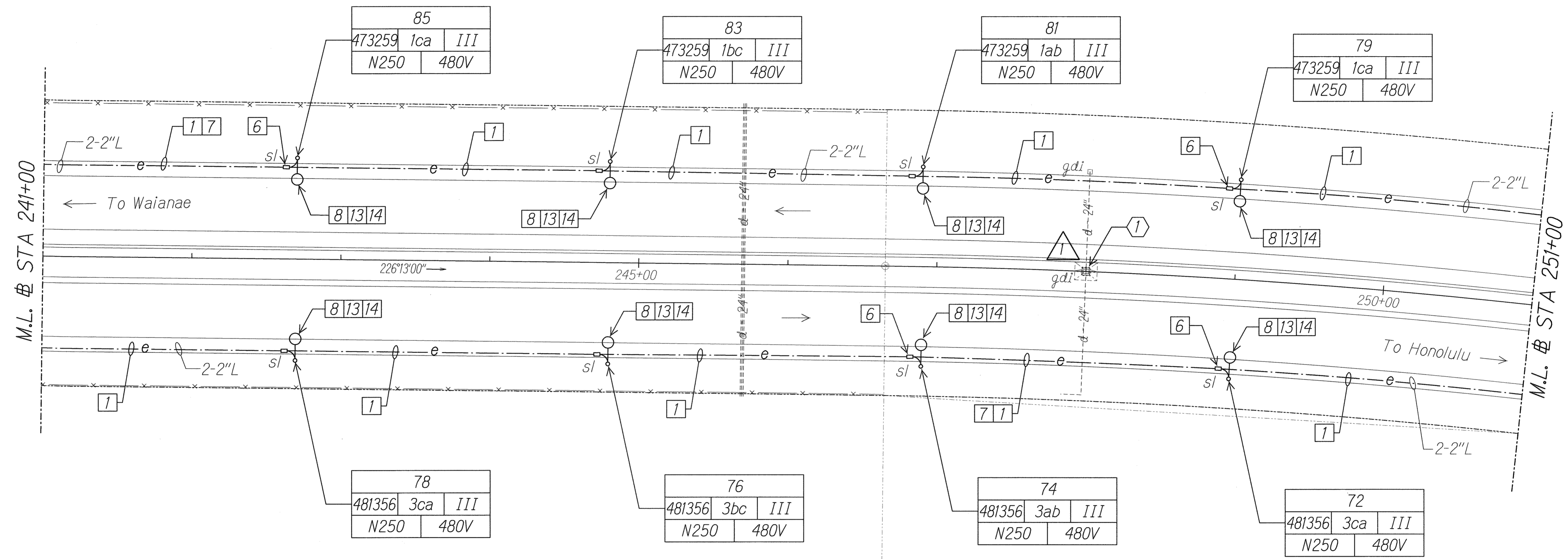
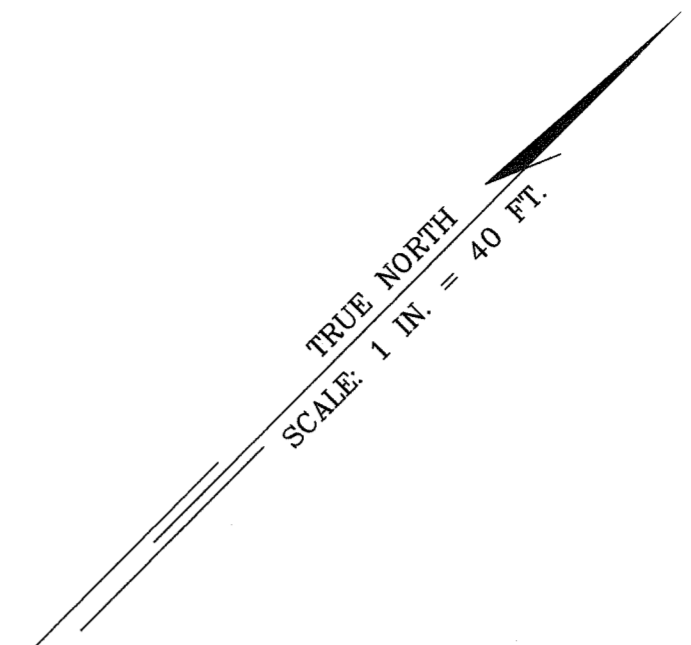


DATE	_____
SURVEY PLOTTED BY	_____
DRAWN BY	_____
TRACED BY	_____
QUANTITIES BY	_____
CHECKED BY	_____
ORIGINAL PLAN	_____
NOTE BOOK	_____
N.	_____

11/23/10	Changed Grate Drain Inlet Protection #1 to Drain Inlet Protection #2
DATE	REVISION
STATE OF HAWAII DEPARTMENT OF TRANSPORTATION HIGHWAYS DIVISION HIGHWAY LIGHTING PLAN STA 177+00 TO 187+00 Interstate Route H-1 Freeway Lighting System Reconductoring Makakilo Interchange to Kunia Interchange Project No. H1A/D-01-10M Scale: 1" = 40'-0" Date: Aug. 2010	

10201-E10-site1.dgn 11/23/2010 9:37:27 AM

FED. ROAD DIST. NO.	STATE	PROJ. NO.	FISCAL YEAR	SHEET NO.	TOTAL SHEETS
HAWAII	HAW.	H1A/D-01-10M	2011	ADD.19	56



85
473259 1ca III
N250 480V

83
473259 1bc III
N250 480V

81
473259 1ab III
N250 480V

79
473259 1ca III
N250 480V

78
481356 3ca III
N250 480V

76
481356 3bc III
N250 480V

74
481356 3ab III
N250 480V

72
481356 3ca III
N250 480V

DATE	
SURVEY PLOTTED BY	
DRAWN BY	
CHECKED BY	
NOTED BY	
QUANTITIES BY	
CHECKED BY	

11/23/10	Added Grate Drain Inlet Protection
DATE	REVISION

STATE OF HAWAII
DEPARTMENT OF TRANSPORTATION
HIGHWAYS DIVISION

HIGHWAY LIGHTING PLAN

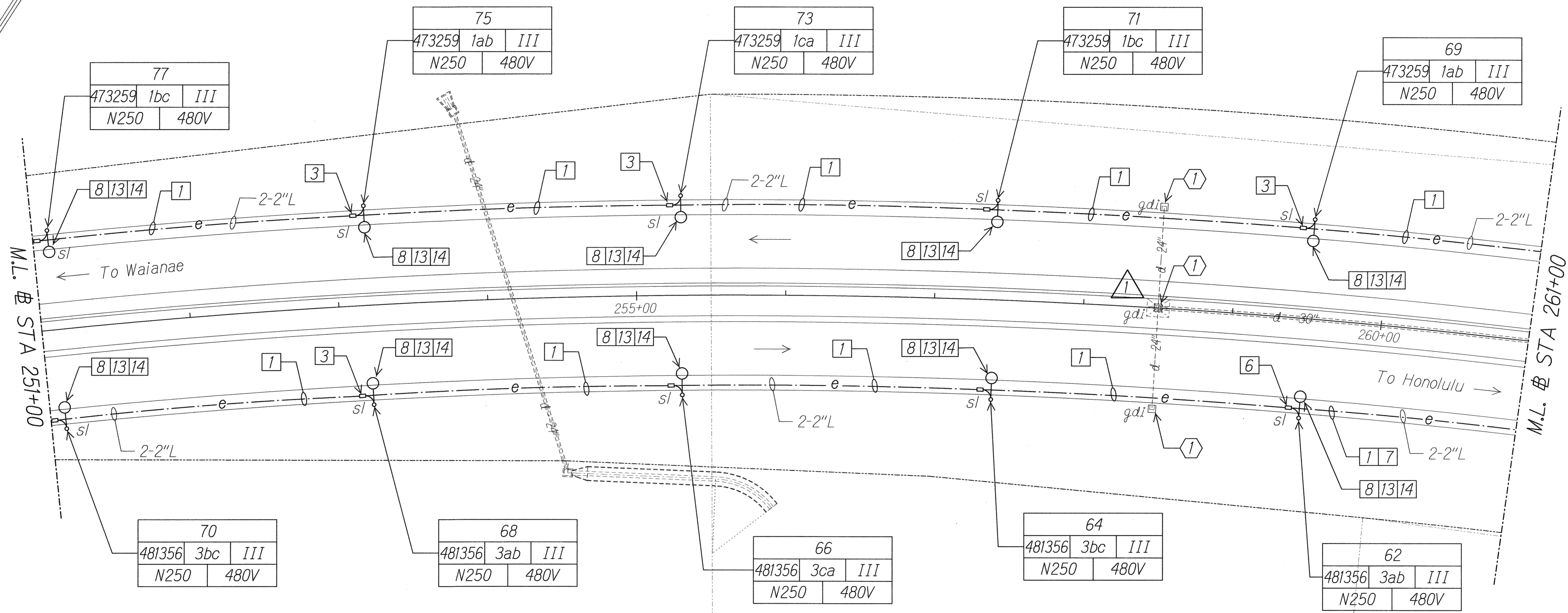
STA 241+00 TO 251+00

Interstate Route H-1
Freeway Lighting System Reconductoring
Makakilo Interchange to Kunia Interchange
Project No. H1A/D-01-10M
Scale: 1" = 40'-0" Date: Aug. 2010

10201-E13-stitel.dgn 11/23/2010 9:38:19 AM

FED. ROAD DIST. NO.	STATE	PROJ. NO.	FISCAL YEAR	SHEET NO.	TOTAL SHEETS
HAWAII	HAW.	H1A/D-01-10M	2011	ADD.20	56

TRUE NORTH
SCALE: 1" = 40'



DATE _____
 SURVEY PLOTTED BY _____
 ORIGINAL PLAN _____
 DRAWN BY _____
 TRACED BY _____
 QUANTITIES BY _____
 CHECKED BY _____
 N. _____

11/23/10	Added Grate Drain Inlet Protection
DATE	REVISION

RUSSELL K. MORAN
LICENSED PROFESSIONAL ENGINEER
No. 9013-E
HAWAII, U.S.A.
11/23/10
MK ENGINEERS, LTD.
LICENSE EXPIRATION DATE: 4/30/12
THIS WORK WAS PREPARED BY ME
OR UNDER MY SUPERVISION.

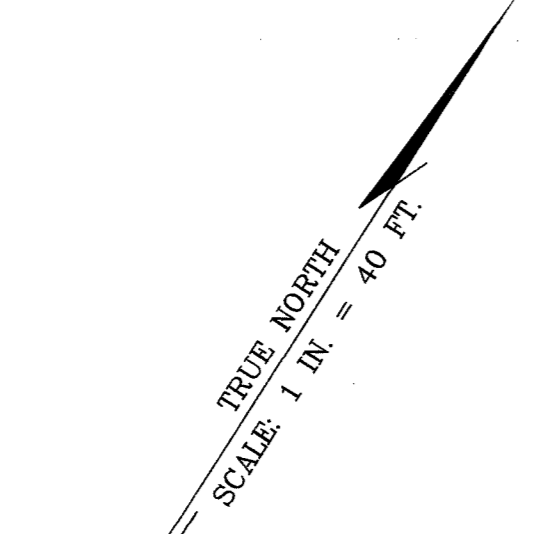
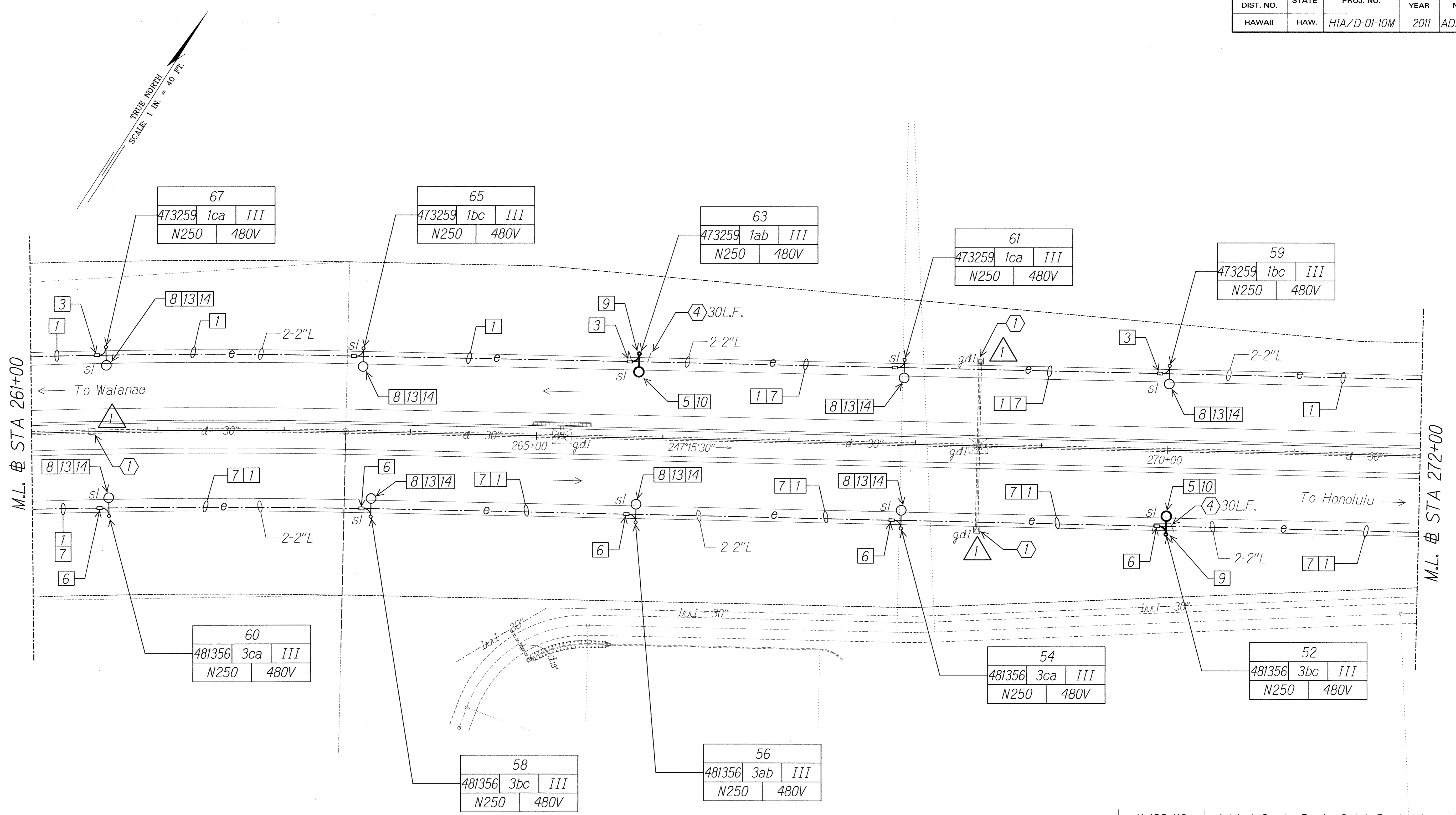
STATE OF HAWAII
DEPARTMENT OF TRANSPORTATION
HIGHWAYS DIVISION

HIGHWAY LIGHTING PLAN
STA 251+00 TO 261+00

*Interstate Route H-1
Freeway Lighting System Reconductoring
Makakilo Interchange to Kunia Interchange*
Project No. H1A/D-01-10M
Scale: 1" = 40'-0" Date: Aug. 2010

10201-E14-st1eM.dgn 11/23/2010 9:39:08 AM

FED. ROAD DIST. NO.	STATE	PROJ. NO.	FISCAL YEAR	SHEET NO.	TOTAL SHEETS
HAWAII	HAW.	HIA/D-01-10M	2011	ADD.21	56

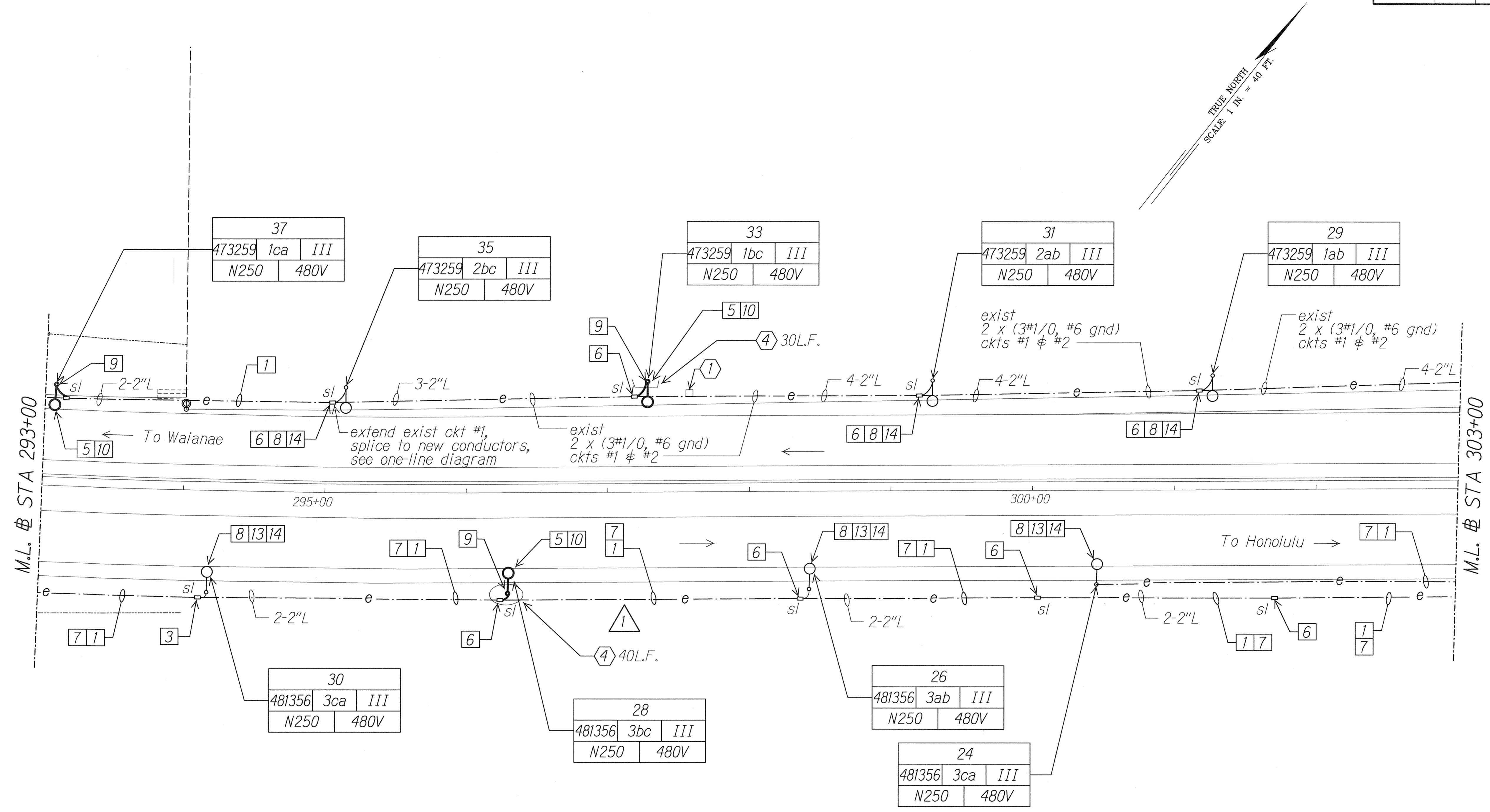


SURVEY PLOTTED BY _____ DATE _____
 DRAWN BY _____
 CHECKED BY _____
 NOTE BOOK _____
 QUANTITIES BY _____
 CHECKED BY _____
 N. _____

11/23/10	Added Gate Drain Inlet Protection
DATE	REVISION

STATE OF HAWAII
 DEPARTMENT OF TRANSPORTATION
 HIGHWAYS DIVISION
HIGHWAY LIGHTING PLAN
STA 261+00 TO 272+00
 Interstate Route H-1
 Freeway Lighting System Reconductoring
 Makakilo Interchange to Kunia Interchange
 Project No. HIA/D-01-10M
 Scale: 1" = 40'-0" Date: Aug. 2010
 SHEET No. E-15 OF 56 SHEETS

FED. ROAD DIST. NO.	STATE	PROJ. NO.	FISCAL YEAR	SHEET NO.	TOTAL SHEETS
HAWAII	HAW.	H1A/D-01-10M	2011	ADD.24	56



SURVEY PLOTTED BY	DATE
DRAWN BY	
TRACED BY	
NOTED BY	
CHECKED BY	
DATE	

11/23/10	Removed Grate Drain Inlet Protection
DATE	REVISION

RUSSELL K. MOORE
LICENSED PROFESSIONAL ENGINEER
No. 9013-E
HAWAII, U.S.A.

STATE OF HAWAII
DEPARTMENT OF TRANSPORTATION
HIGHWAYS DIVISION

HIGHWAY LIGHTING PLAN
STA 293+00 TO 303+00

Interstate Route H-1
Freeway Lighting System Reconductoring
Makakilo Interchange to Kunia Interchange
Project No. H1A/D-01-10M
Scale: 1" = 40'-0" Date: Aug. 2010

10201-E18-sited.dgn 11/23/2010 9:40:44 AM