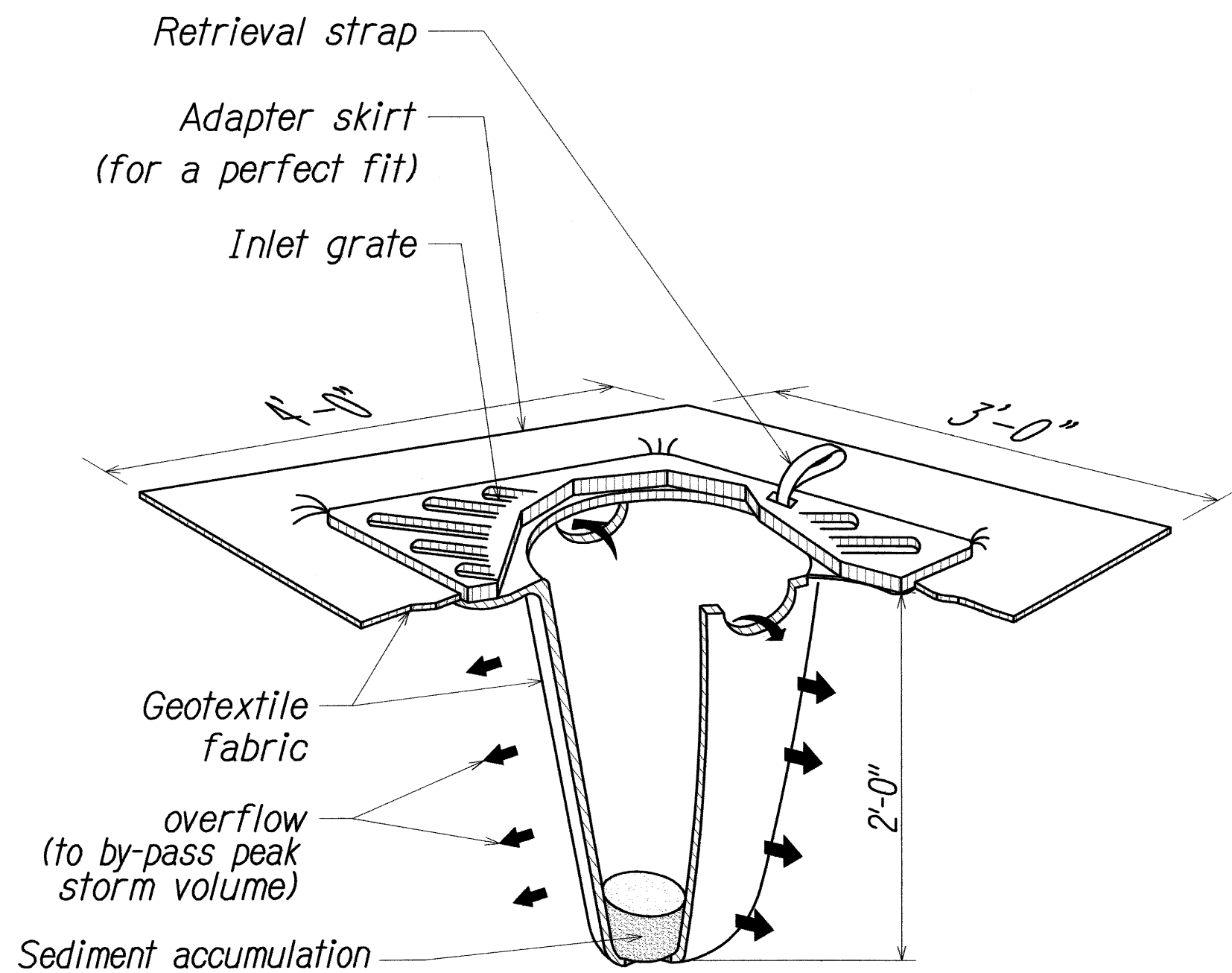


| FED. ROAD DIST. NO. | STATE | PROJ. NO. | FISCAL YEAR | SHEET NO. | TOTAL SHEETS |
|---------------------|-------|--------------|-------------|-----------|--------------|
| HAWAII | HAW. | IM-0300(127) | 2011 | 16 | 60 |



- NOTES: 1. All inlet protection on road shoulders shall be protected from damage by vehicular traffic with Type II barricades with amber flashers.
2. Contractor shall check the condition of the filter at the beginning and ending of each work day and repair/ clean as necessary.

TEMPORARY SEDIMENT BARRIER

AT DRAIN INLET

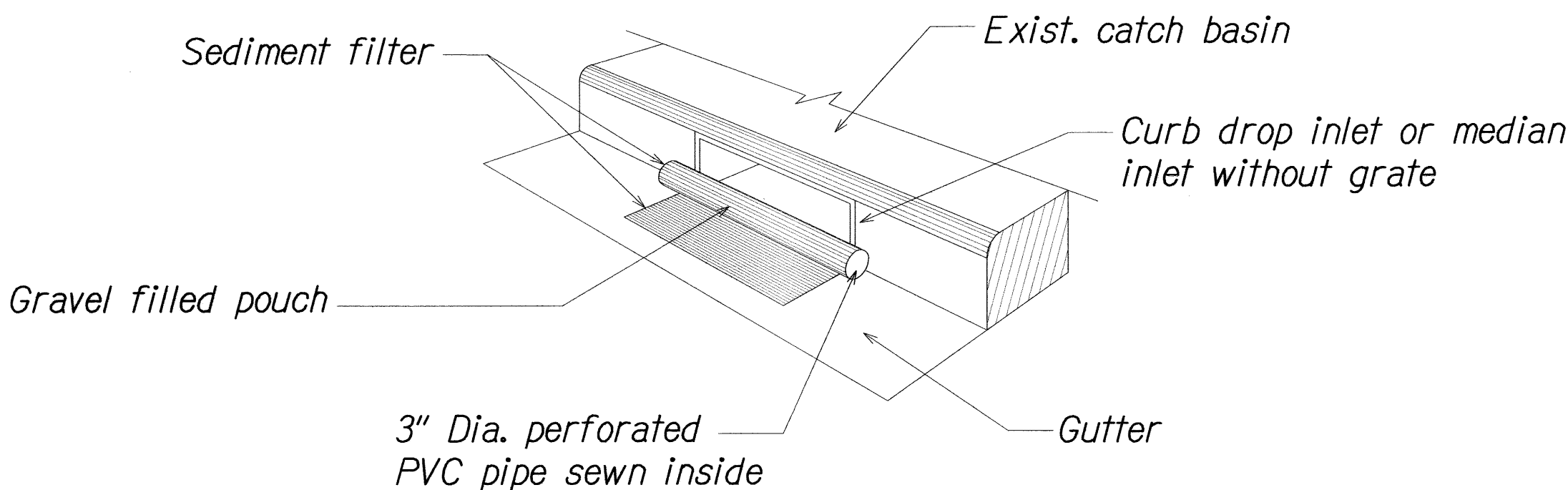
NOT TO SCALE

NOTE:

Contractor to install at all existing catch basins or drain inlets adjacent to and immediately down stream of all work areas.

TEMPORARY STORM DRAIN PROTECTION

NOT TO SCALE

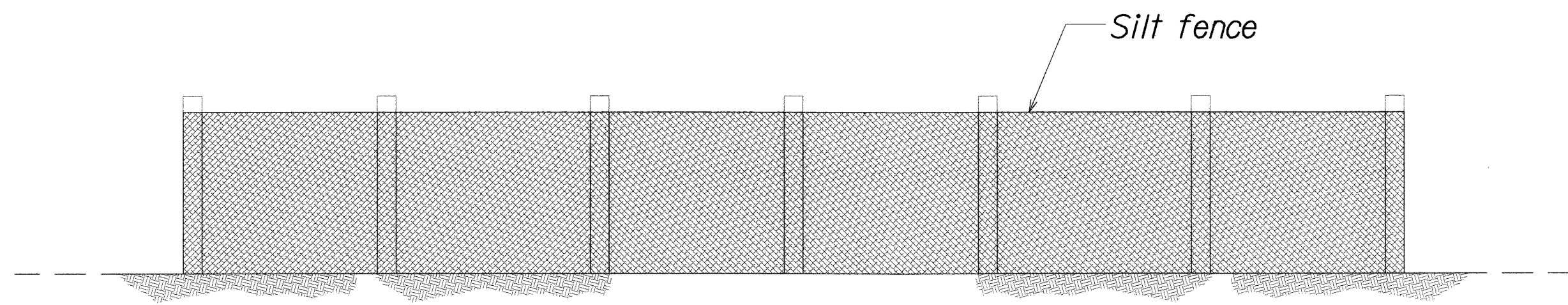


EROSION CONTROL/BEST MANAGEMENT PRACTICES NOTES:

- Erosion control measures to be installed prior to start of work, and be maintained until completion of project.
- Contractor to periodically inspect catch basin filter especially during heavy rainfall.
- Remove filter at times of above normal rainfall events and replace them when the event has passed.
- The final lift of each day's work shall be compacted to prevent erosion of fill material.
- Good housekeeping shall be utilized to ensure protection of roadways from mud, dirt, and debris.
- The Contractor shall ensure that all tires of construction vehicles are sufficiently cleaned off so that dirt or debris is not tracked off the construction site. Washing off tires with water will not be acceptable unless the runoff is contained and does not enter the storm drain system.
- Any dirt or grassed area disturbed shall be restored by seeded hydromulch.
- At the end of construction operations and at the completion of the project, Contractor shall inspect all catch basin, drain inlet and drain manhole surrounding the project site. Any accumulated sediment and debris found in storm drain structures shall be removed. Please note that flushing into the drain structures is prohibited.
- Contractor shall submit proposed storm drain and sediment barrier for acceptance prior to installation.

| | |
|-------------------|------|
| SURVEY PLOTTED BY | DATE |
| DESIGNED BY | |
| TRACED BY | |
| DESIGNED BY | |
| QUANTITIES BY | |
| CHECKED BY | |
| NO. | |

FILED: 186-46-38-46.21\DWG\C-8 EROSION CONTROL R2.DWG Oct. 27, 2011-8:35 AM

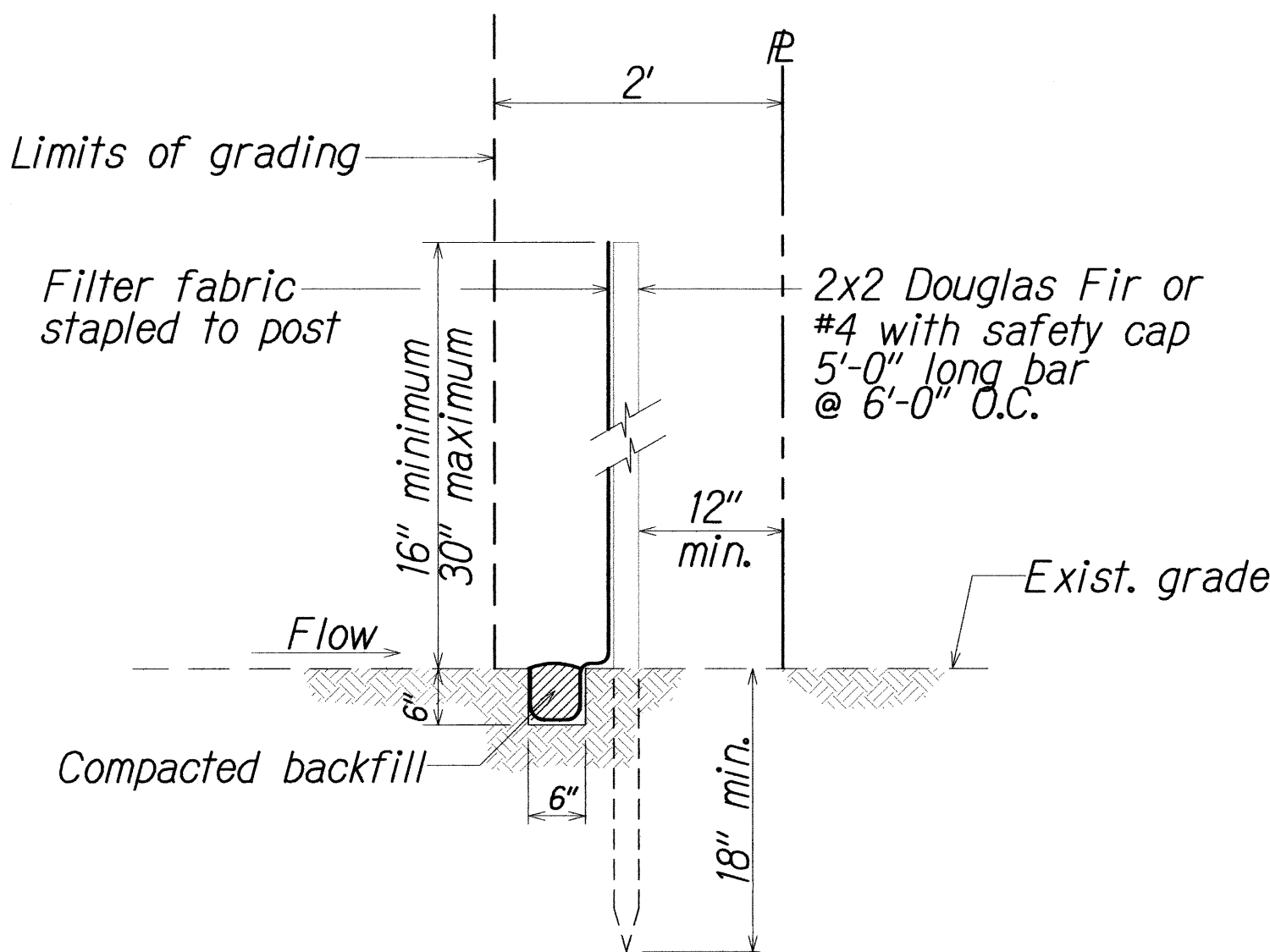


ELEVATION

- NOTES: Filter fabric shall be a pervious sheet of polypropylene, nylon, polyester or ethylene yarn with UV inhibitors and stabilizers.

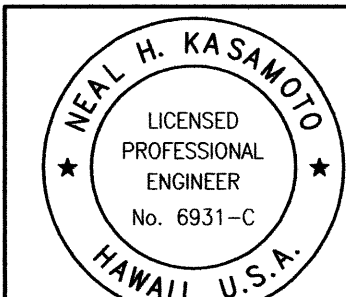
SILT FENCE DETAIL

NOT TO SCALE



SECTION

0 1 2
LINE IS 2 INCHES AT FULL SIZE
(If not 2 inches, scale accordingly)



THIS WORK WAS PREPARED BY ME OR UNDER MY SUPERVISION AND CONSTRUCTION OF THIS PROJECT WILL BE UNDER MY OBSERVATION AS DEFINED IN HAWAII TITLE 16, CHAPTER 115, RULES OF THE BOARD OF PROFESSIONAL ENGINEERS, ARCHITECTS AND SURVEYORS, STATE OF HAWAII

STATE OF HAWAII
DEPARTMENT OF TRANSPORTATION
HIGHWAYS DIVISION
Erosion Control Details

*Freeway Management System, Phase 1C,
Part 1B: Installation of CCTV and
Communication Infrastructure
Federal Aid Project No. IM-0300(127)*

Scale: NTS Date: 8/18/11

SHEET No. C-8 OF 8 SHEETS