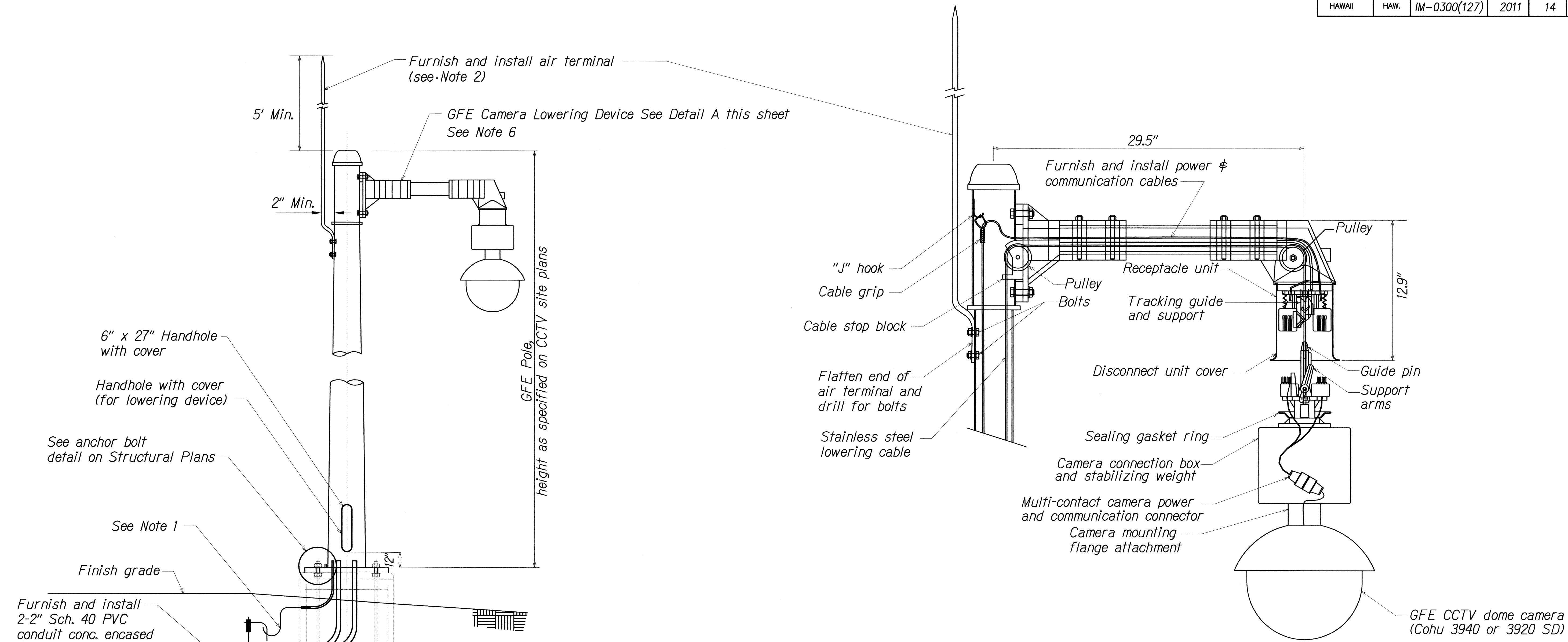


FED. ROAD DIST. NO.	STATE	PROJ. NO.	FISCAL YEAR	SHEET NO.	TOTAL SHEETS
HAWAII	HAW.	IM-0300(127)	2011	14	60



- NOTES:**
1. The Contractor shall use an AWG #6 solid, bare copper wire to bond the pole to the ground rod(s).
  2. Air terminal as required to provide lightning protection shall be included in all shop drawings submitted for approval. The tip of the air terminal shall be ground to a point.
  3. See Special Provisions for camera and cabling requirements.
  4. The Contractor shall ensure that the orientation of the camera lowering device is aligned with that of the bolt circle pattern to be positioned to match the orientation detail on the site plans. This shall be approved by the Engineer prior to installation.
  5. Refer to State of Hawaii, Department of Transportation, Highways Division, Standard Plans 2008, TE-36 for trench details.
  6. Refer manufacturer's (MG Squared) instructions for installation details for camera lowering device.
  7. Only pole, camera lowering device and CCTV camera are government furnished equipment (GFE), Contractor shall furnish and install other items as noted on plans.
  8. 70-foot pole, 50-foot pole and camera lowering devices were designed and furnished via project: FAP No. NH-0300(107). Refer to project's Shop Drawings for more details.

**DETAIL A (FOR INSTALLATION INFORMATION ONLY)**  
**GFE CAMERA LOWERING DEVICE AND GFE CCTV CAMERA**  
NOT TO SCALE

**1 GFE CCTV POLE DETAIL**  
C-4 & C-5 C-6 NOT TO SCALE

DATE	____
DESIGNED BY	____
TRACED BY	____
NOTED BY	____
CHECKED BY	____
NO.	____

FILED: 106-46-96-48-21-DWG-C-6 POLE DETAILS R1.DWG Nov 23, 2011-2:35 PM

NEAL H. KASAMOTO  
LICENSED PROFESSIONAL ENGINEER  
No. 6931-C  
HAWAII, U.S.A.

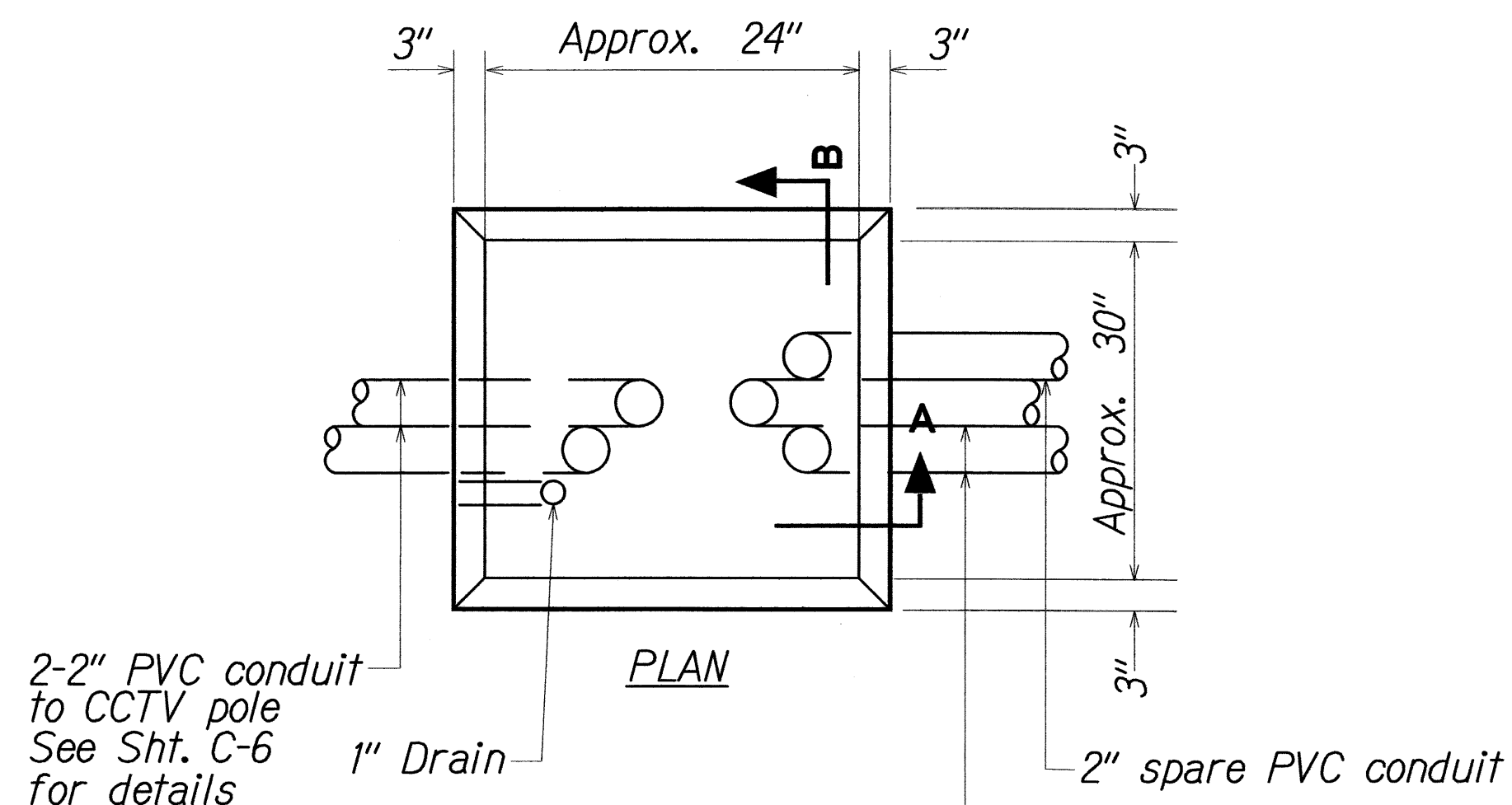
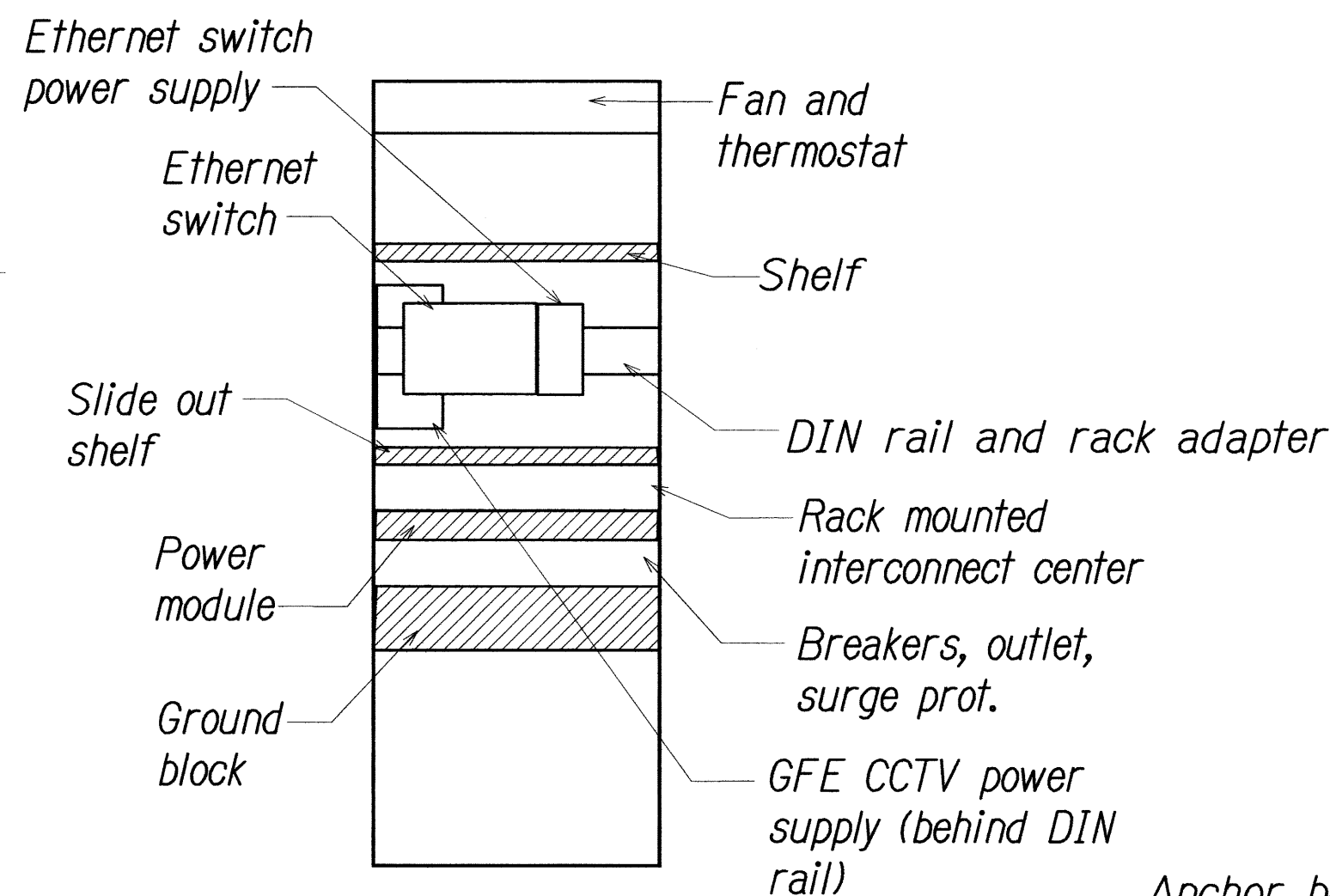
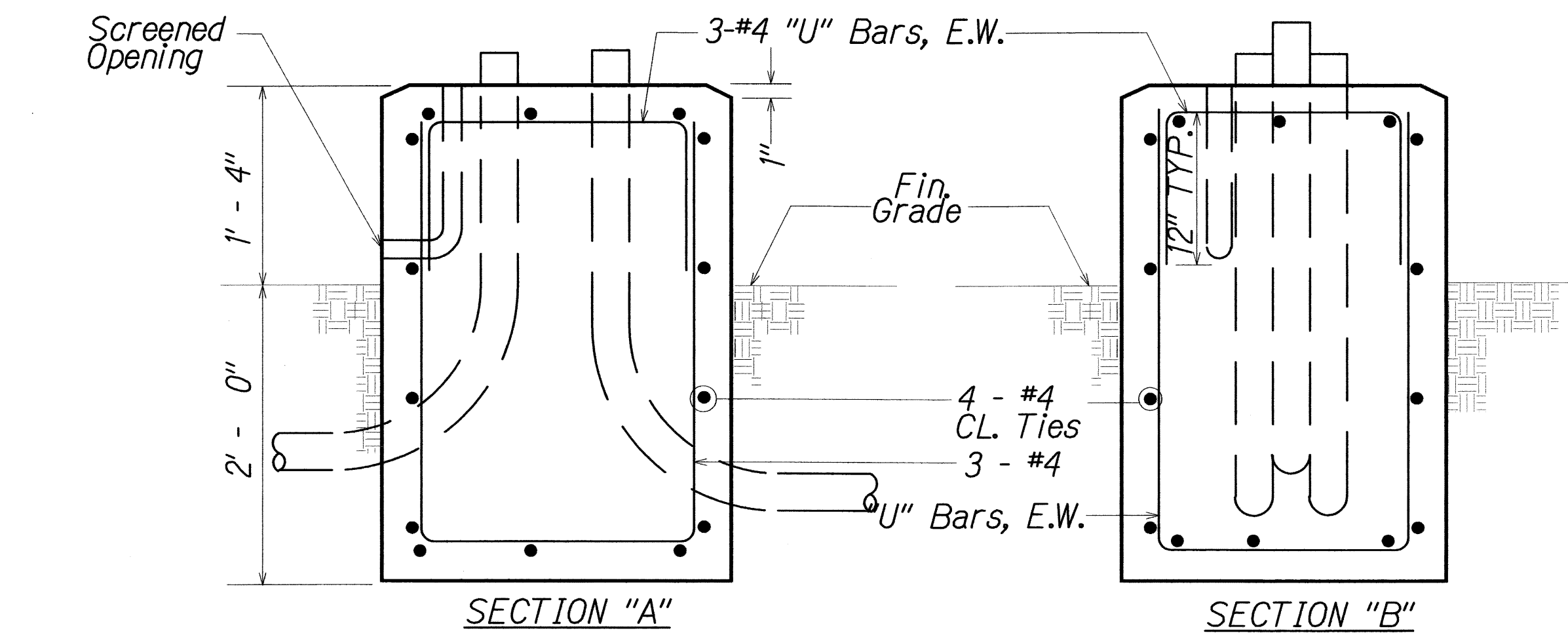
STATE OF HAWAII  
DEPARTMENT OF TRANSPORTATION  
HIGHWAYS DIVISION  
**CCTV Pole Details**

Freeway Management System, Phase 1C,  
Part 1B: Installation of CCTV and  
Communication Infrastructure  
Federal Aid Project No. IM-0300(127)

Scale: NTS Date: 8/18/11

SHEET No. C-6 OF 8 SHEETS

FED. ROAD DIST. NO.	STATE	PROJ. NO.	FISCAL YEAR	SHEET NO.	TOTAL SHEETS
HAWAII	HAW.	IM-0300(127)	2011	15	60

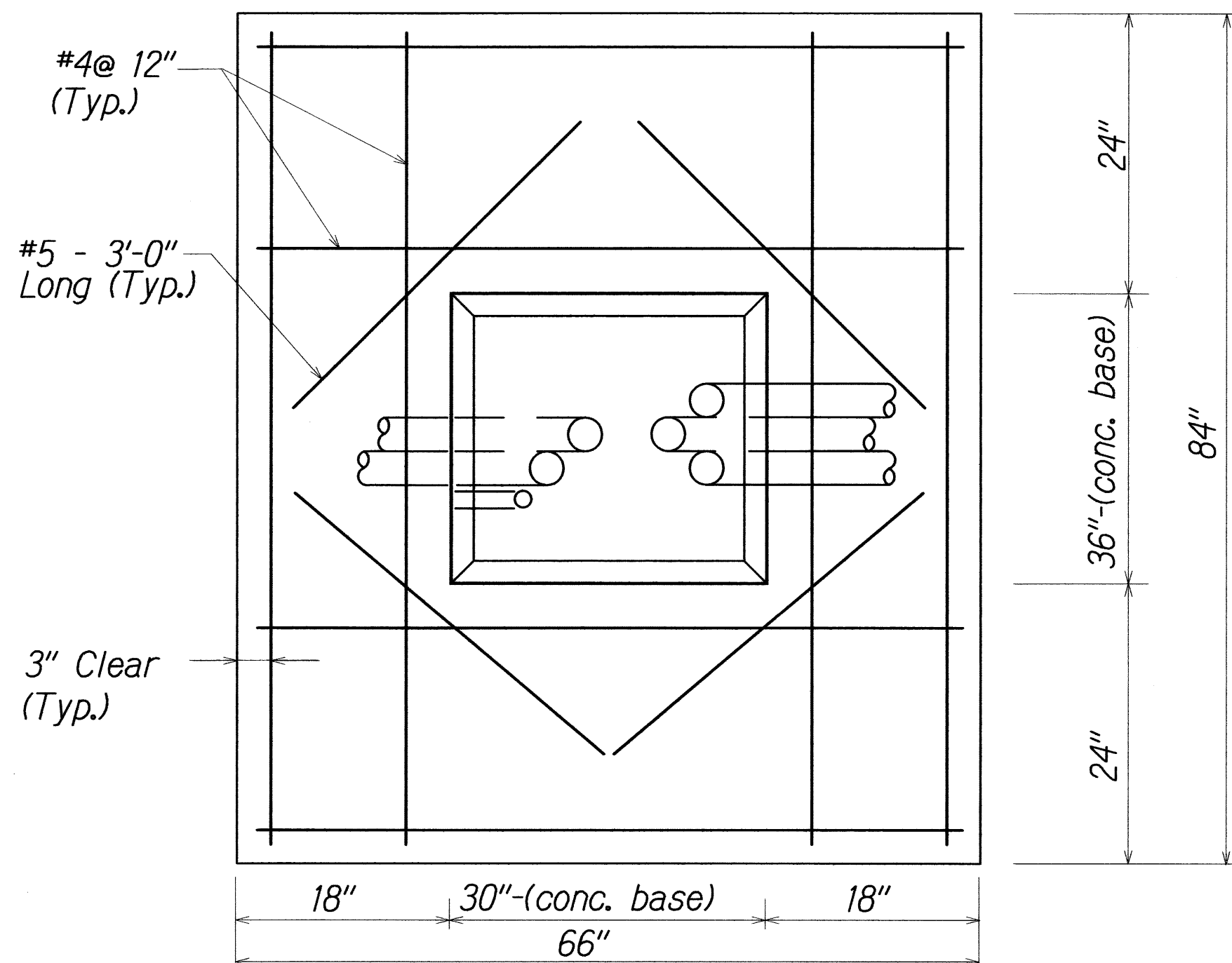


**CONCRETE BASE  
FOR EQUIPMENT CABINET**  
NOT TO SCALE

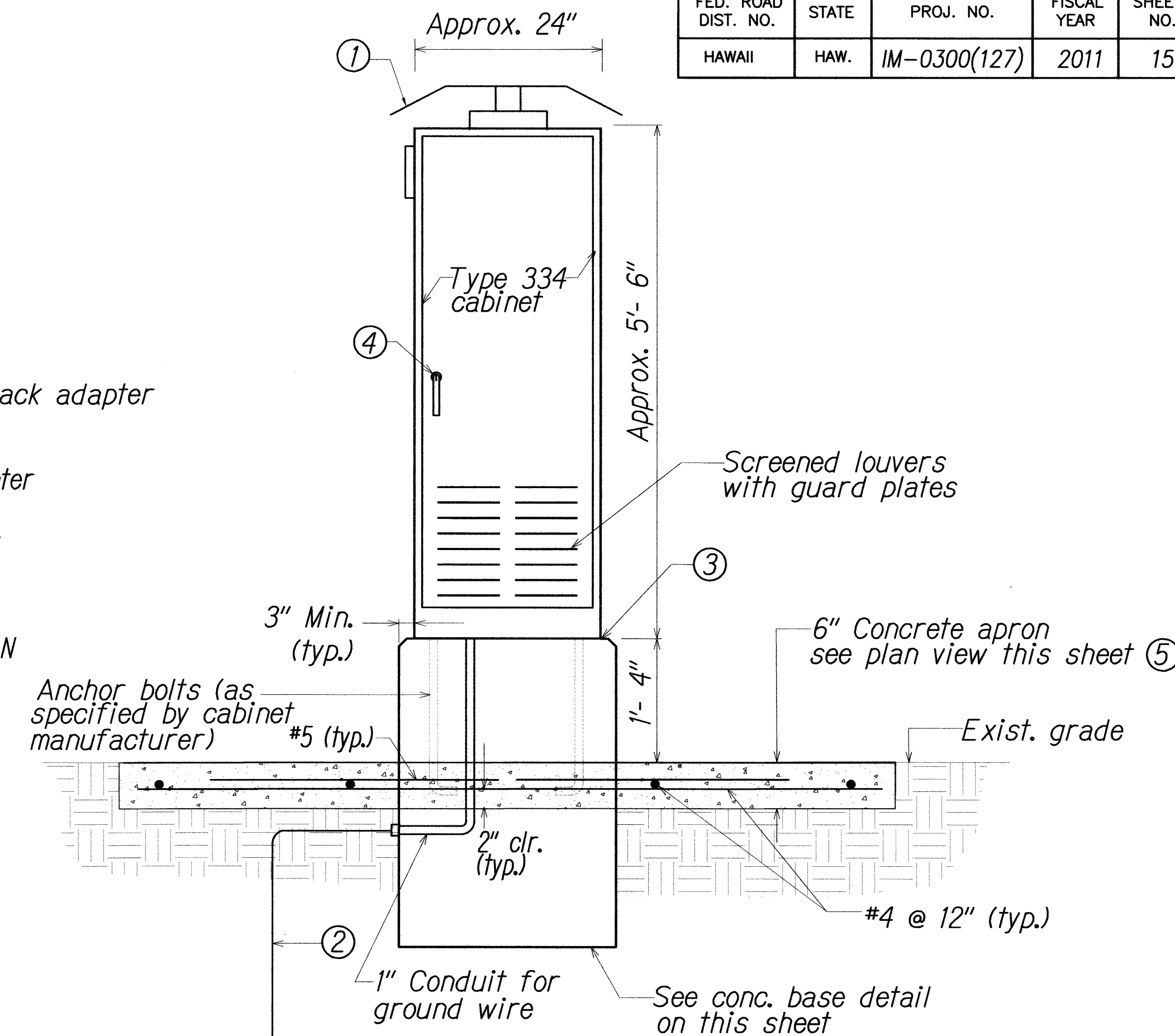
**NOTES:**

- Concrete shall be Class "B".
- Dimensions shall be altered to suit controller cabinet actually furnished.
- Conduit bends and drain are incidental to concrete base.
- Refer to cabinet manufacturer's specifications for details of anchor bolts and base setting.
- All exposed surfaces of concrete base shall have a Class 2, rubbed finish.

Electric & fiber conduits, number as required on Electrical Plans



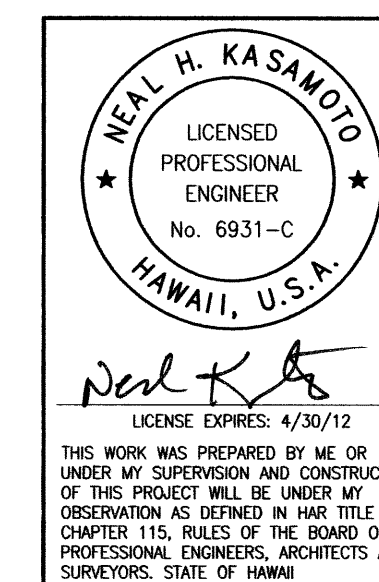
**PLAN VIEW OF  
CONCRETE APRON FOR  
EQUIPMENT CABINET**  
NOT TO SCALE



**EQUIPMENT CABINET**  
NOT TO SCALE

**NOTES:**

- Sunshields on top and south side of cabinet.
- Ground rod, 3/4" dia. x 8' min. if subsurface conditions exist which prohibit the placement of the ground rod in a vertical position, at the direction of the Engineer, the rod may be driven at an oblique angle not to exceed 45 degrees from vertical or buried in a trench at least 30" deep. connection to ground rod shall be cadwelded.
- Silicone caulk between cabinet and base and apron and base
- Door lock on each door
- Conc. apron shall be Class "B"



STATE OF HAWAII  
DEPARTMENT OF TRANSPORTATION  
HIGHWAYS DIVISION  
**CCTV Cabinet Details**  
Freeway Management System, Phase 1C,  
Part 1B: Installation of CCTV and  
Communication Infrastructure  
Federal Aid Project No. IM-0300(127)  
Scale: NTS Date: 8/18/11  
SHEET No. C-7 OF 8 SHEETS

0 1 2  
LINE IS 2 INCHES AT FULL SIZE  
(If not 2 inches, scale accordingly)

DESIGNED BY	DATE
NOTED BY	
CHECKED BY	
ORIGINAL	
PLAN	
NOTEBOOK	
NO.	

FILE: \\96-46-96-46-21\DWG\7 CABINET DETAILS R1.DWG Nov 23, 2011-2:36 PM