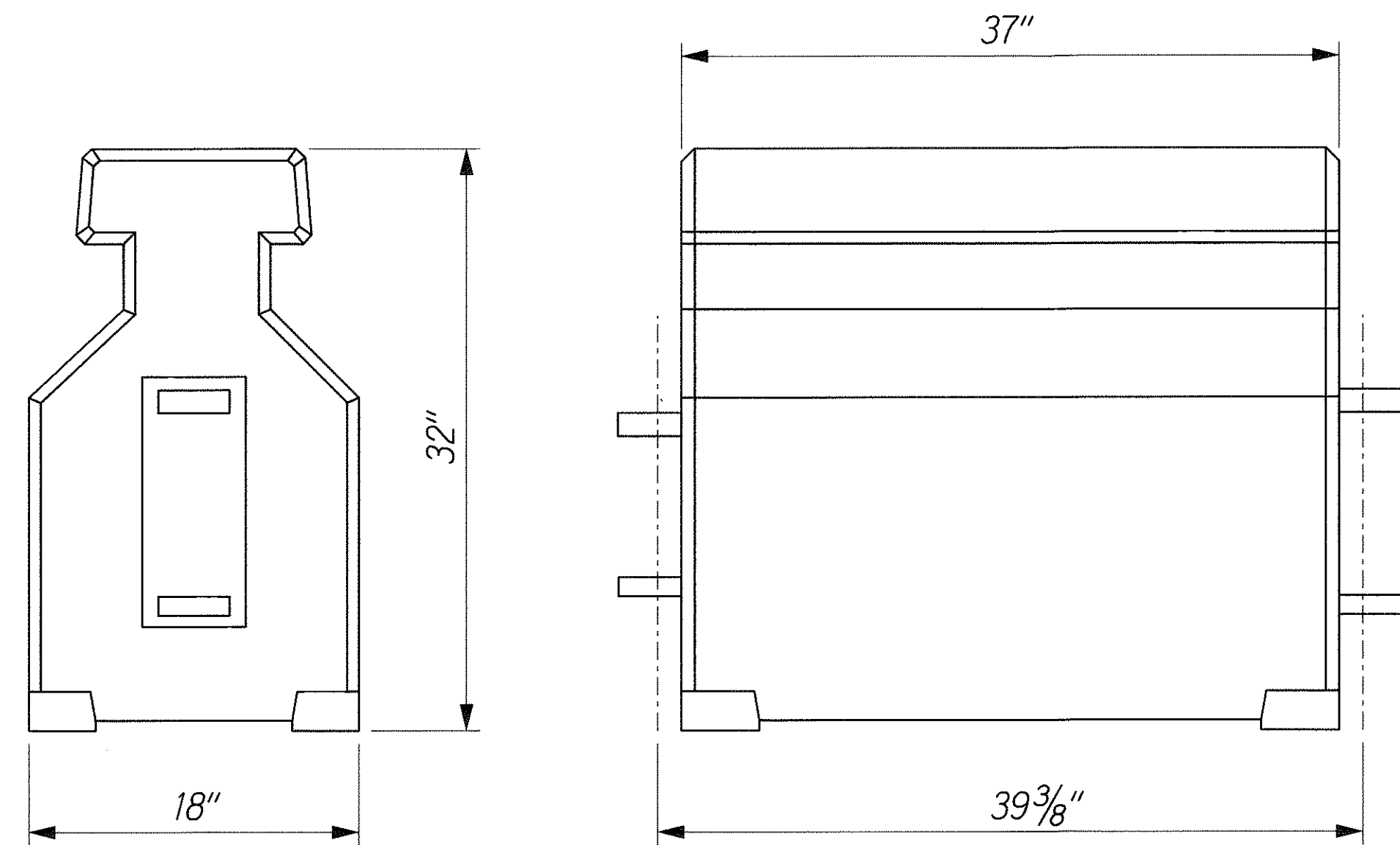
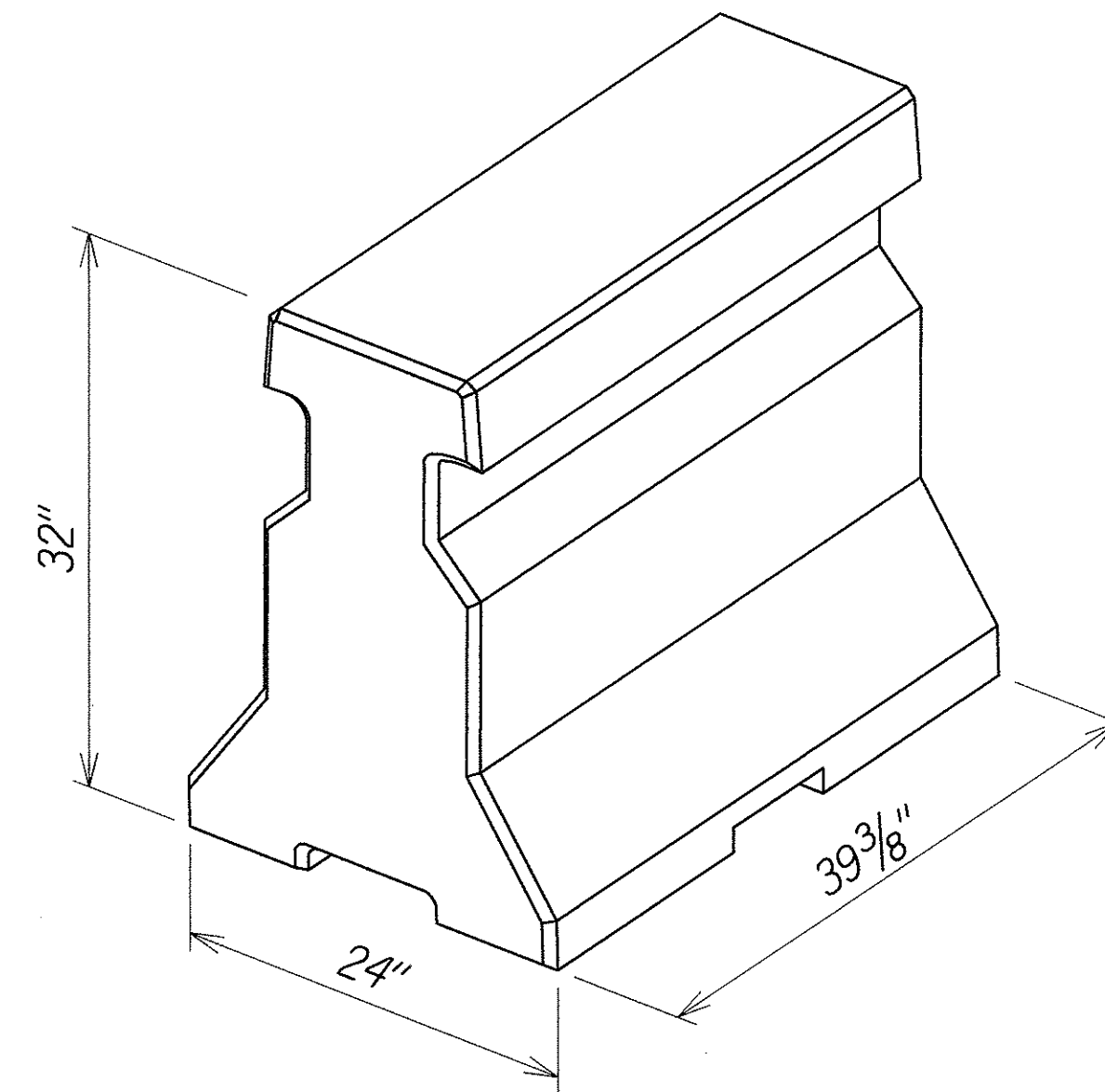


FED. ROAD DIST. NO.	STATE	FEDERAL AID PROJ. NO.	FISCAL YEAR	SHEET NO.	TOTAL SHEETS
HAWAII	HAW.	NH-HI-1(246)	2004	39	105



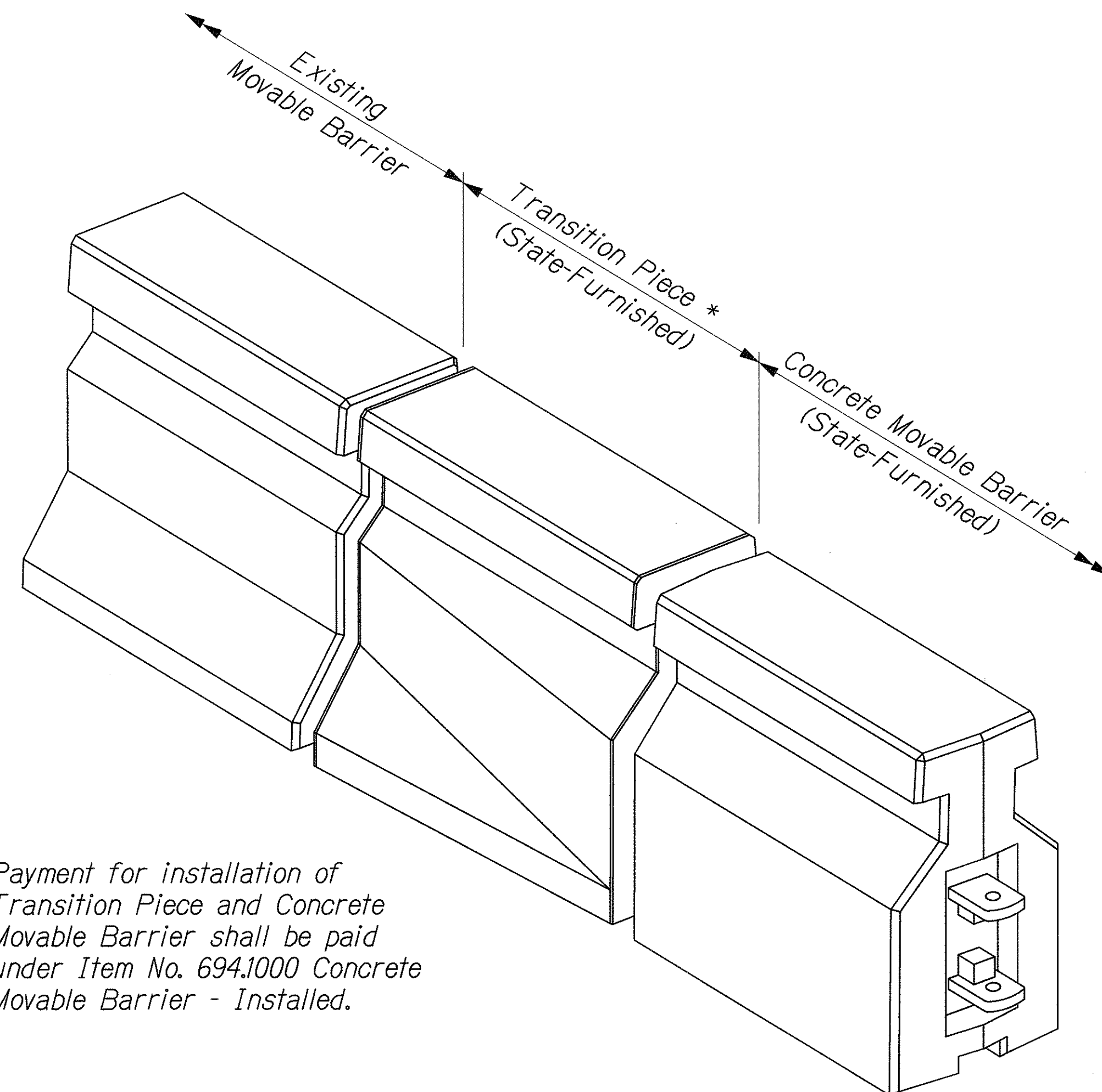
CONCRETE MOVABLE BARRIER (STATE-FURNISHED)

Not to Scale



EXISTING MOVABLE BARRIER

Not to Scale



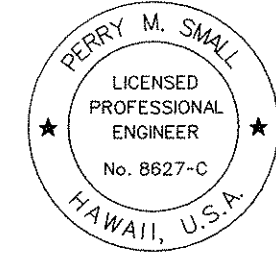
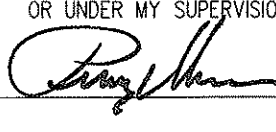
* Payment for installation of Transition Piece and Concrete Movable Barrier shall be paid under Item No. 694.1000 Concrete Movable Barrier - Installed.

**TRANSITION FOR CONNECTION TO
STATE-FURNISHED CONCRETE MOVABLE BARRIER**

Not to Scale

ORIGINAL PLAN	DESIGNED BY	DATE
NOTE BOOK	DRAWN BY	
	CHECKED BY	
	QUANTITIES BY	
	TRACED BY	
	REVIEW PLOTTED BY	

16/ZIPPER EXTENSION/519N/PMDET01.dgn

 <small>THIS WORK WAS PREPARED BY ME OR UNDER MY SUPERVISION.</small> 	STATE OF HAWAII DEPARTMENT OF TRANSPORTATION HIGHWAYS DIVISION MOVABLE BARRIER DETAILS INTERSTATE ROUTE H-1 ZIPPER LANE EXTENSION RADFORD DRIVE OVERPASS TO KEEHI INTERCHANGE FEDERAL AID PROJECT NO. NH-HI-1(246) Scale: None Date: Mar. 2, 2004
	SHEET No. C23 OF 29 SHEETS