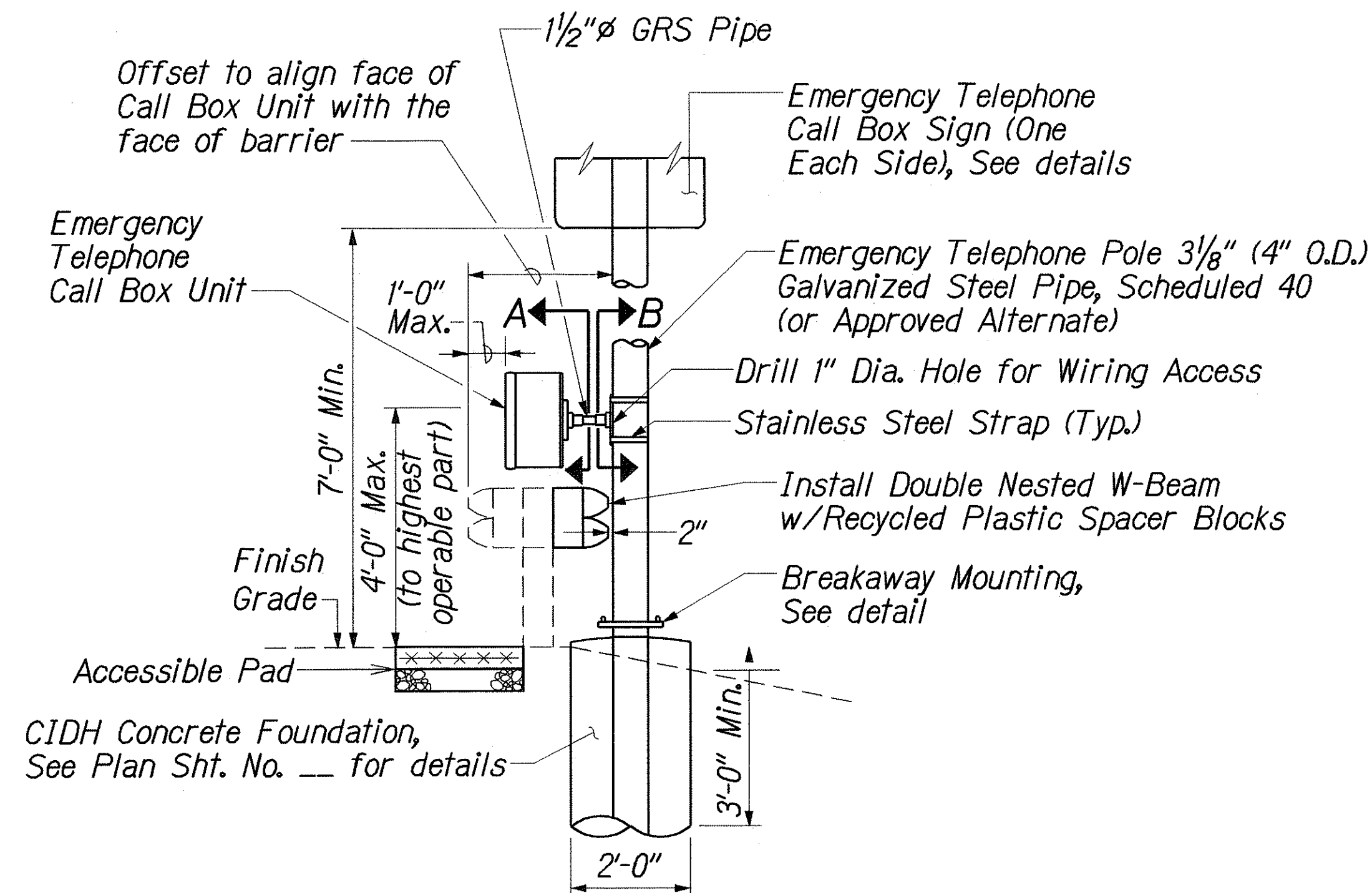
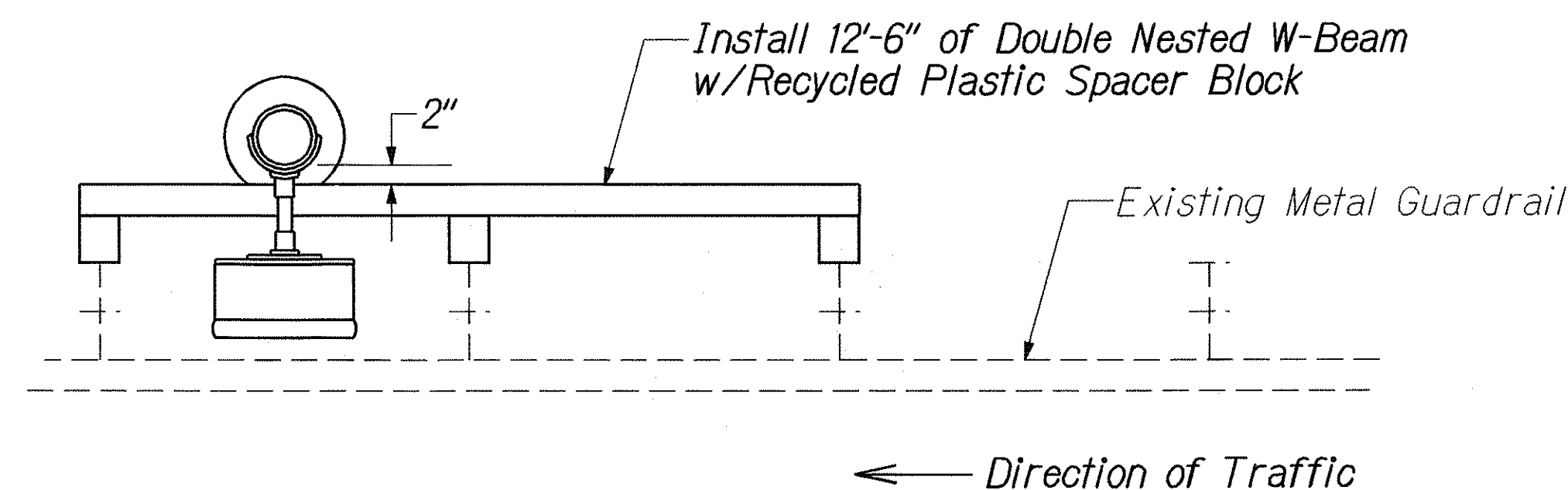


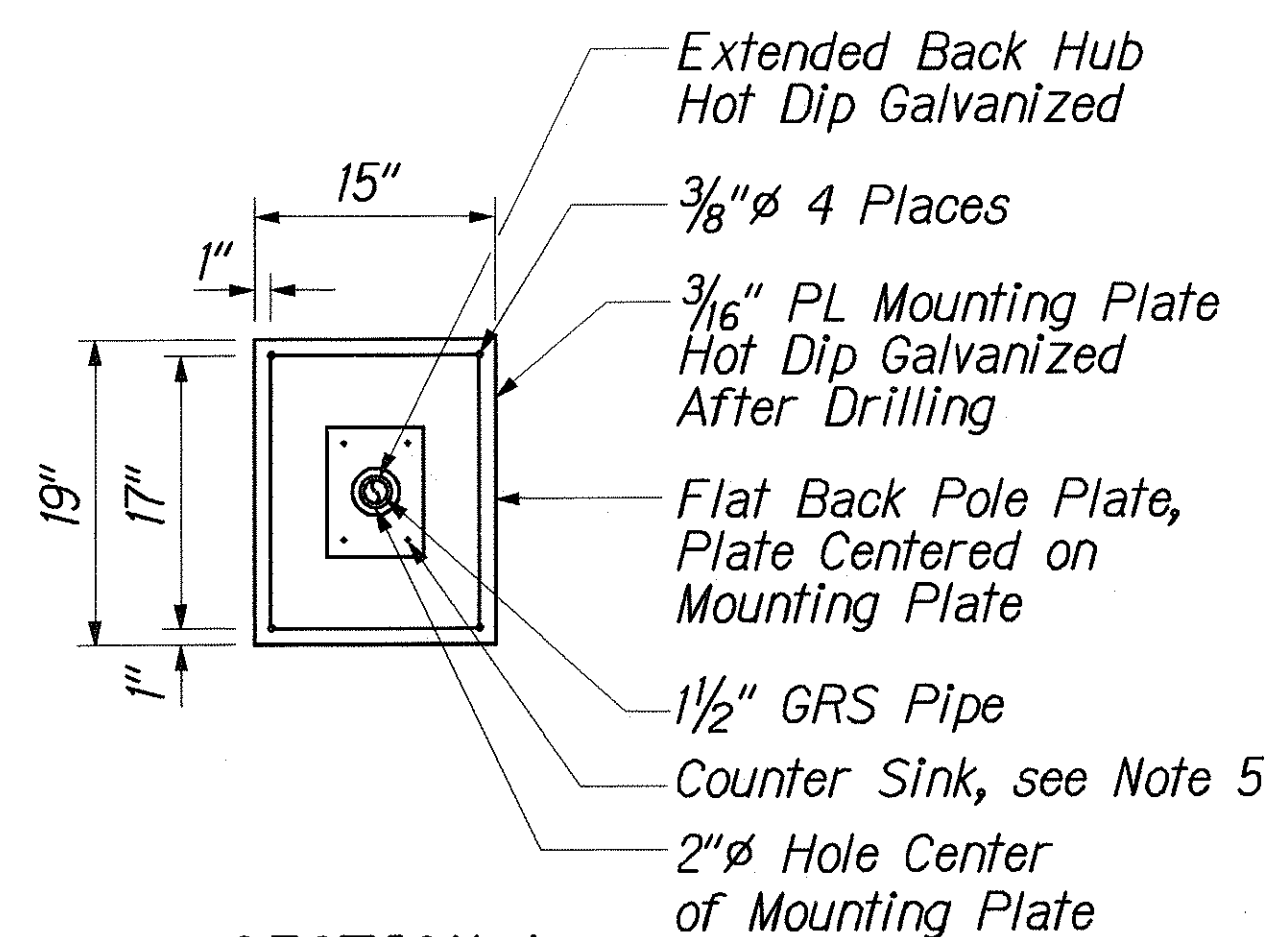
FED. ROAD DIST. NO.	STATE	FED. AID PROJ. NO.	FISCAL YEAR	SHEET NO.	TOTAL SHEETS
HAWAII	HAW.	IM-HI-1(240)	2004	140	143



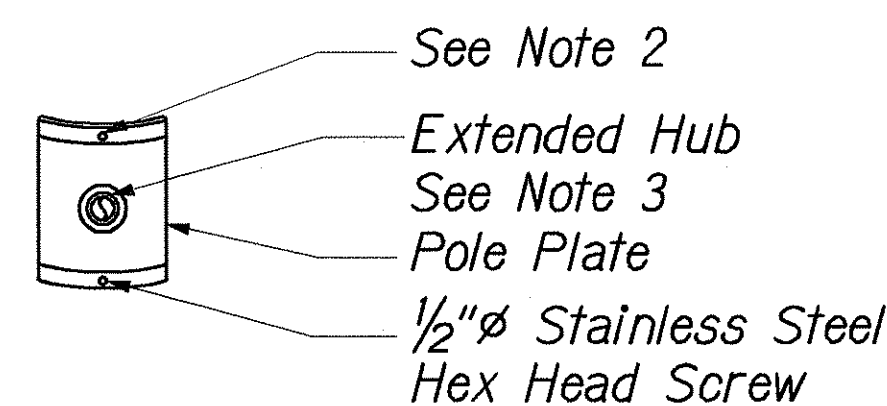
ELEVATION VIEW
Not to Scale



PLAN VIEW
Not to Scale



SECTION A
Not to Scale



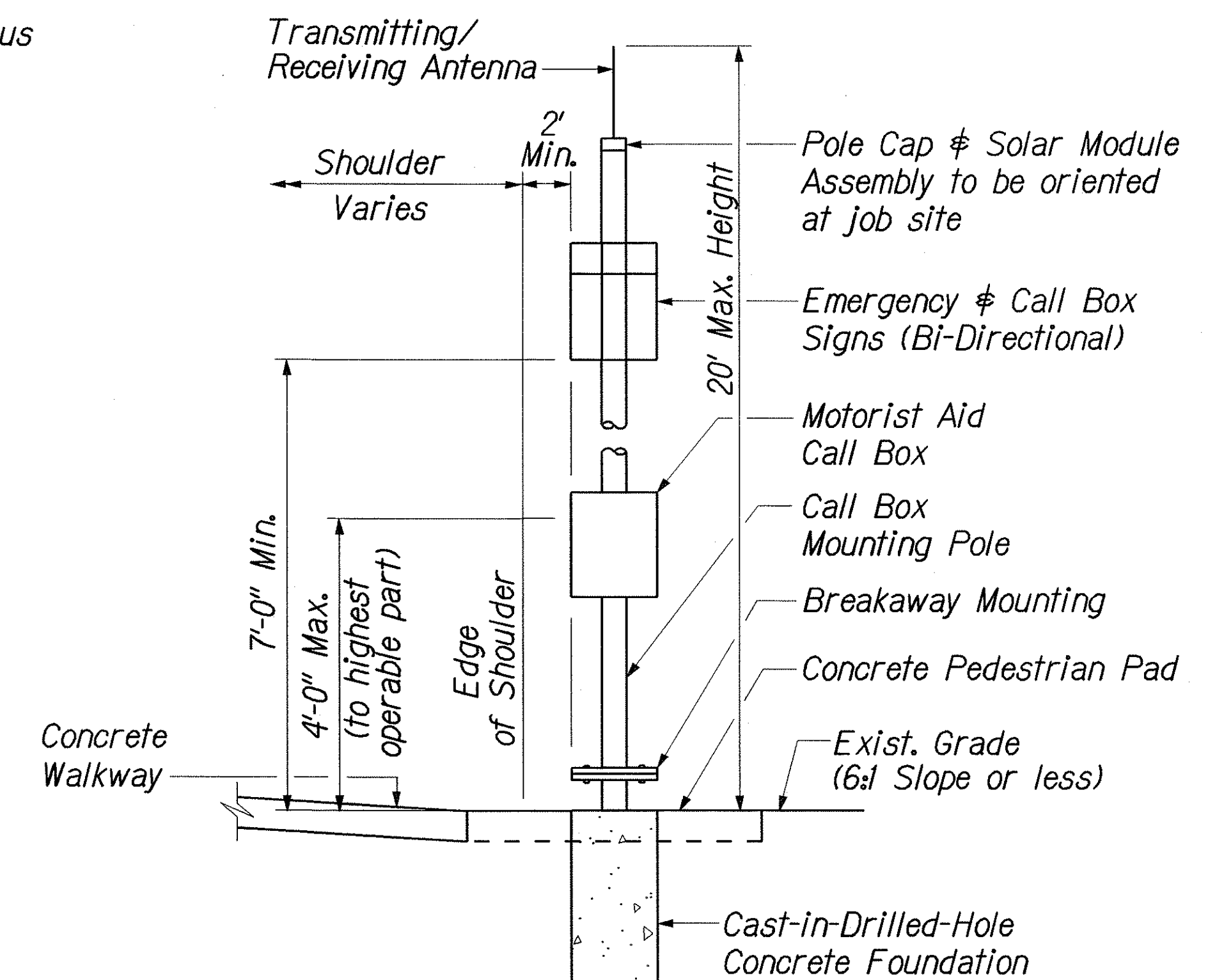
SECTION B
Not to Scale

EMERGENCY TELEPHONE INSTALLATION BEHIND BARRIER RAIL

Not to Scale

NOTES:

- Emergency Telephone Call Box and Concrete Pedestrian Pad/Ramp installation over existing gutter shall be located nearest to an existing drain inlet.
- Edge of the concrete pedestrian pad and ramp shall be 6'-0" downstream from the downstream edge of the drain inlet.
- Remove existing gutter to accommodate the placement of concrete pedestrian pad and ramp. Payment will be considered as incidental to various contract items.
- The exact location of Emergency Call Box units shall be determined in the field by the Engineer.
- Installation of 12'-6" of Double Nested W-Beam w/Recycled Plastic Spacer Block shall be considered incidental to Emergency Telephone.



SIDE VIEW

TYPICAL INSTALLATION
Not to Scale

NOTES:

- Typical installation for behind metal and concrete barrier rail are similar.
- Use bolts only in locations where straps are not feasible or a combination of straps & bolts. Preferred mounting method shall be stainless steel strap.
- Lock conduits to hub with internal hex set. Screw or tack weld prior to hot dip galvanizing.
- Adjust pipe length as required to fit location.
- Install with 1/4" stainless steel counter-sink screws, washers and locknuts.

DESIGNED BY	DATE
DRAWN BY	9/19/03
CHECKED BY	
NOTED BY	
QUANTITIES BY	
REVISIONS	

STATE OF HAWAII
DEPARTMENT OF TRANSPORTATION
HIGHWAYS DIVISION

MISCELLANEOUS DETAILS

INTERSTATE ROUTE H-1
GUARDRAIL & SHOULDER IMPROVEMENTS
Airport Viaduct to Middle Street
Federal Aid Project No. IM-HI-1(240)

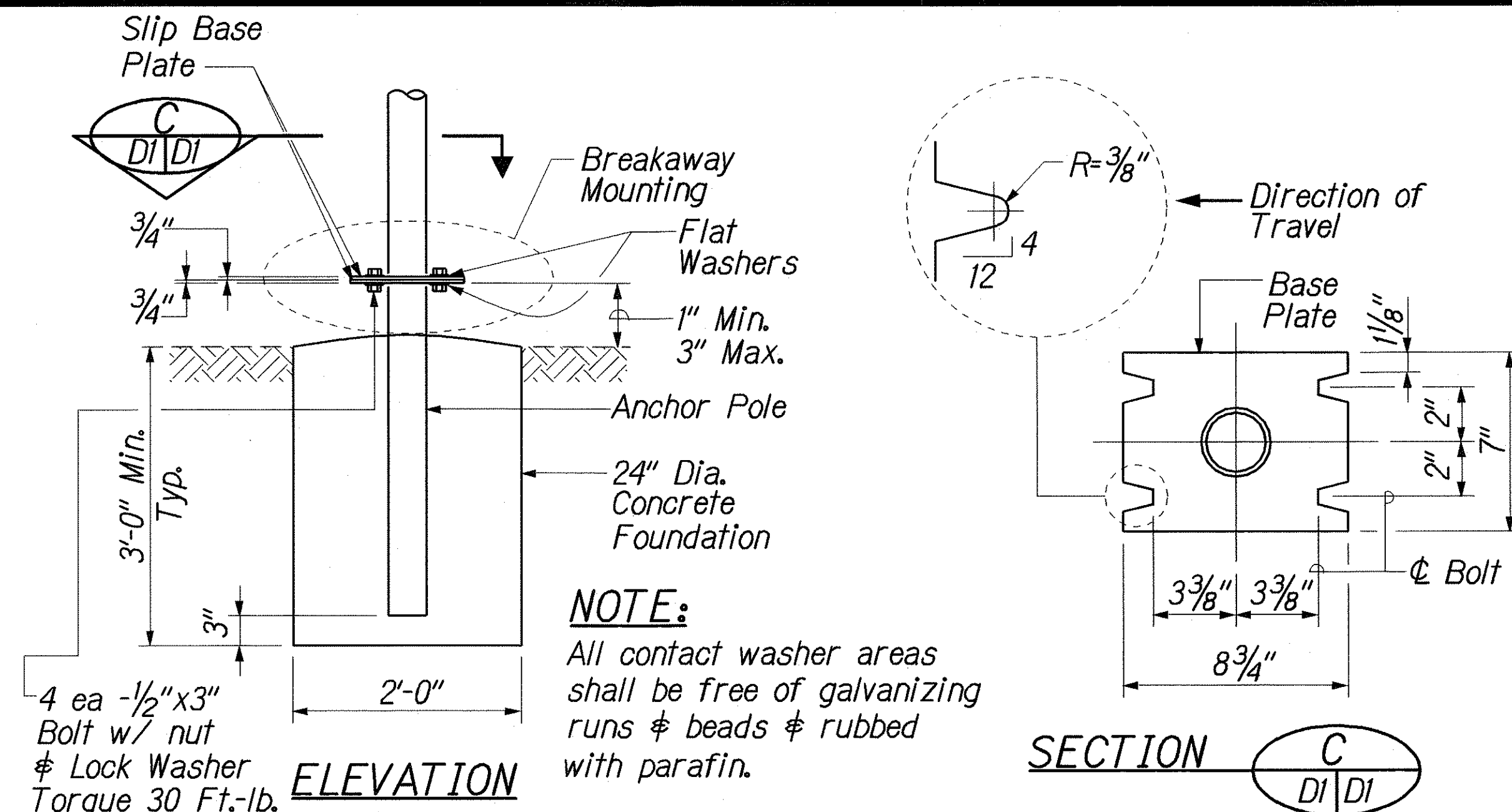
Scale: As Shown Date: Sept. 2003

SHEET No. 2 OF 3 SHEETS

FED. ROAD DIST. NO.	STATE	FED. AID PROJ. NO.	FISCAL YEAR	SHEET NO.	TOTAL SHEETS
HAWAII	HAW.	IM-HI-1(240)	2004	141	143

NOTES:

- Foundation shall be Class B concrete placed against undisturbed material.
- Backfill shall be complete and adjacent surface improvements prepared prior to erection of the post.
- 1/2-inch expansion joint material shall be placed between the foundation and abutting concrete paving.
- CIDH - Cast in Drilled Hole.
- Location of call box unit shall be based on the direction of Traffic, except for installation behind barrier rail. See details Sheet G1, or as directed by the Engineer.



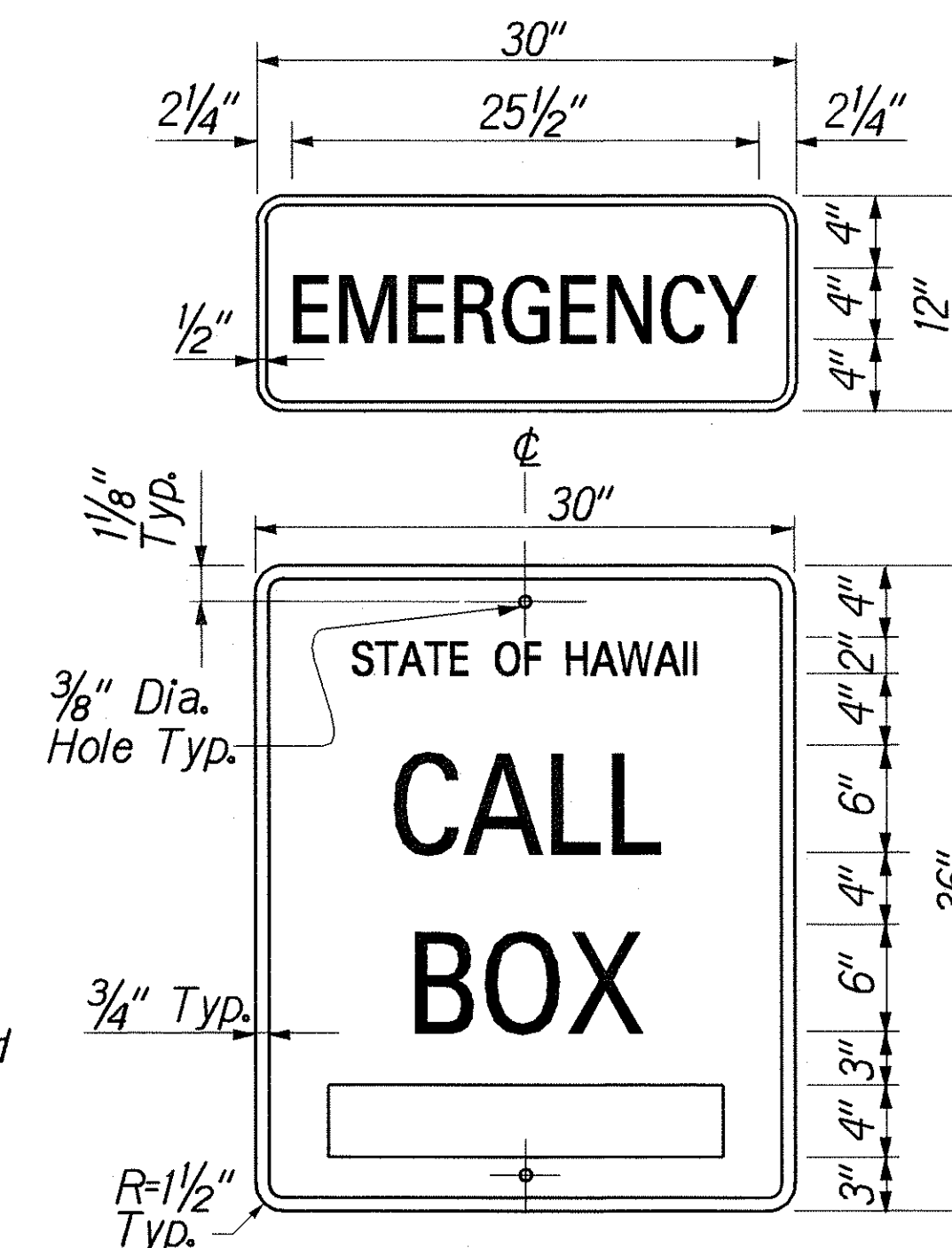
CIDH CONCRETE FOUNDATION WITH BREAKAWAY MOUNTING
Not To Scale

EMERGENCY SIGN NOTES:

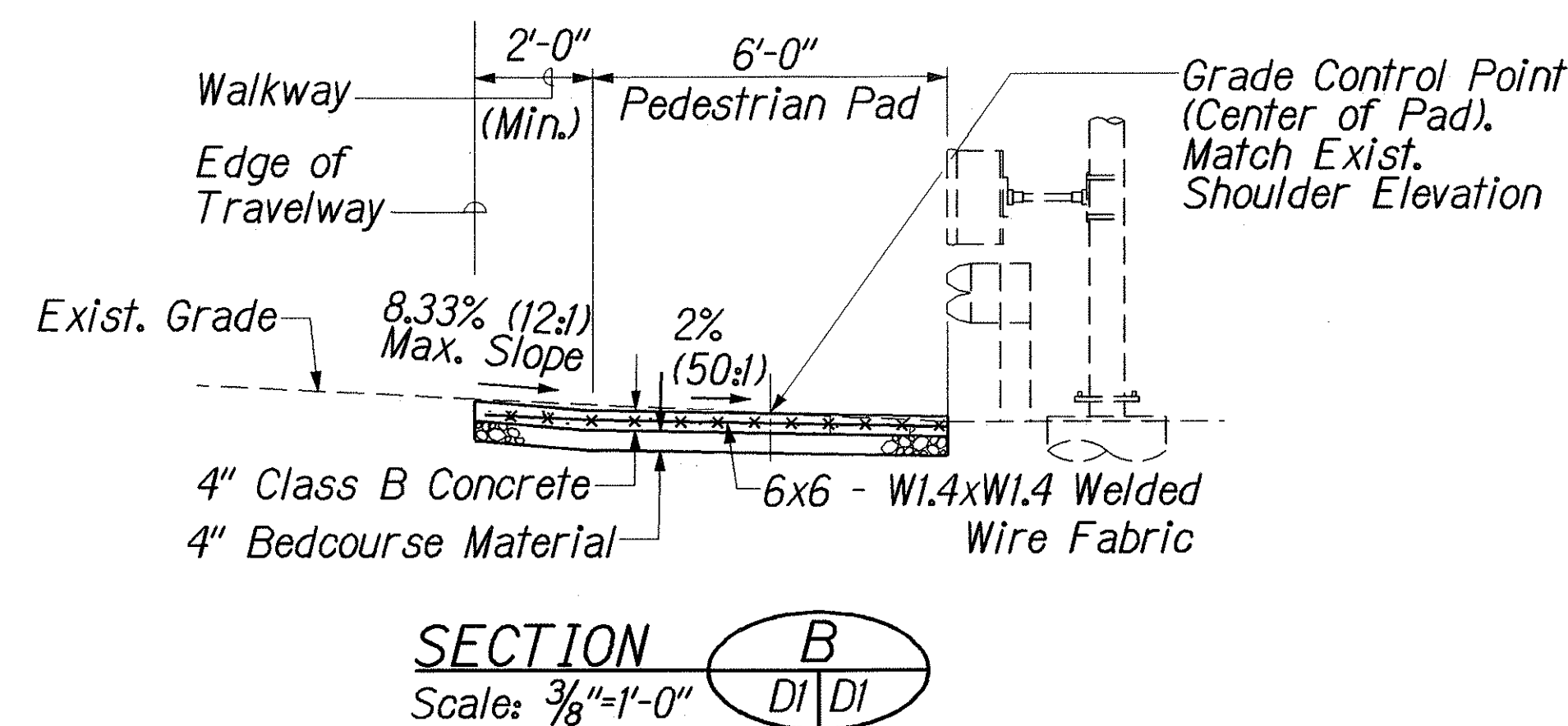
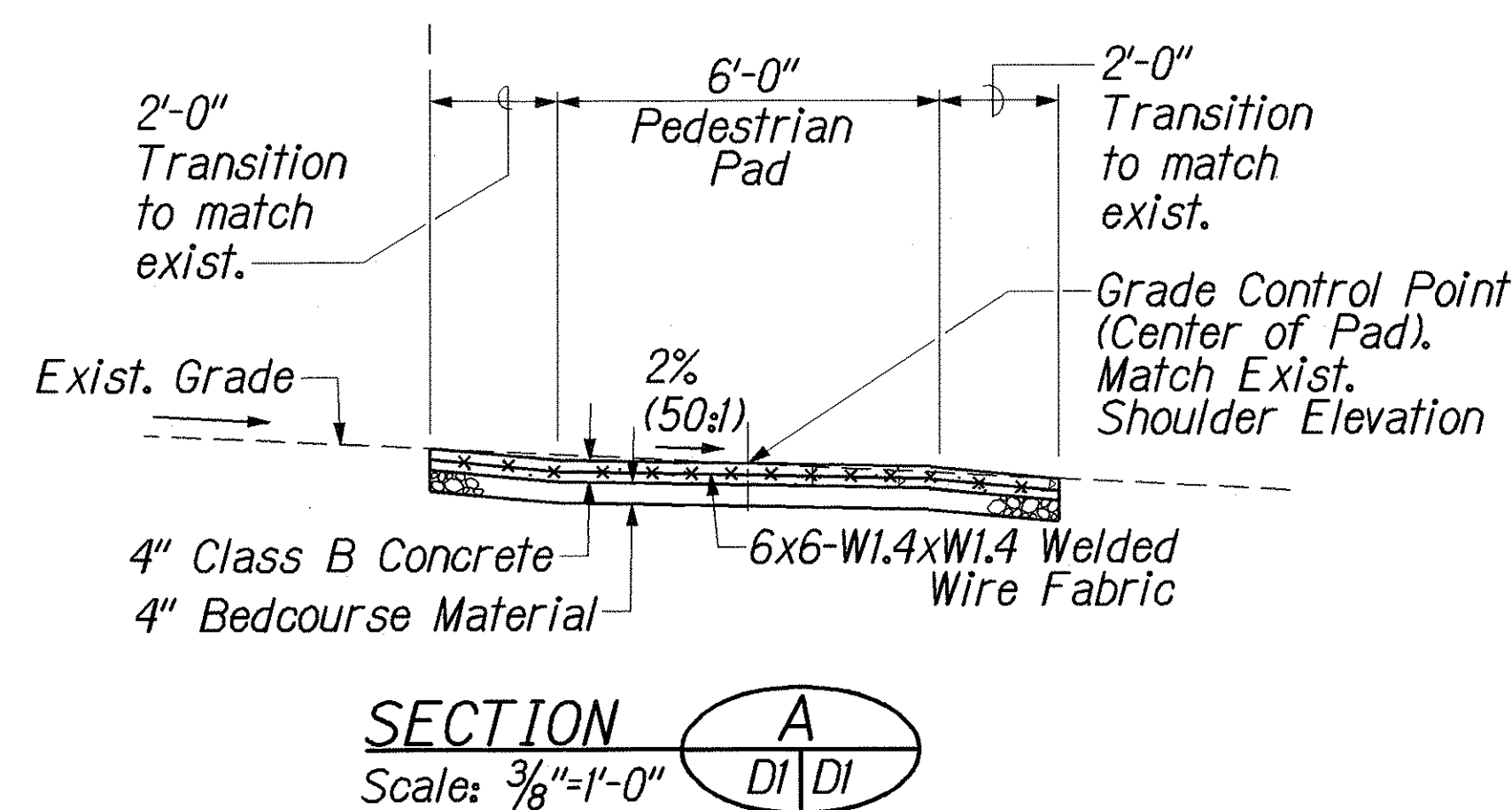
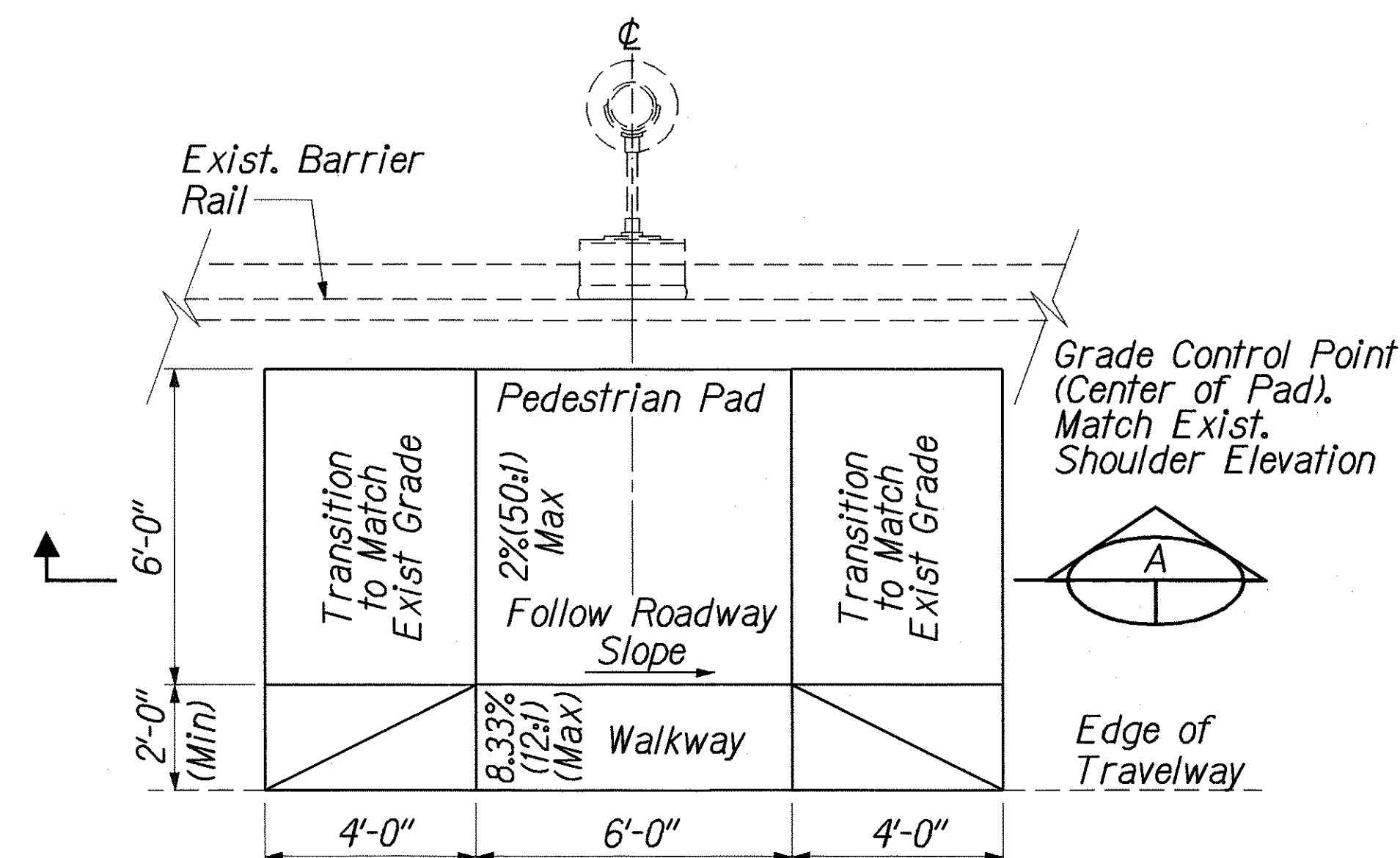
- Lettering shall be centered and shall be 4" SERIES C letters.
- All signs shall have white retroreflectorized border and legend on a blue retroreflectorized background.

CALL BOX SIGN NOTES:

- All lines of lettering shall be centered and shall be the following lettering size and series:
Line No. 1 - 2" SERIES C
Line No. 2 - 6" SERIES E
Line No. 3 - 6" SERIES E
- Call Box Identification Numbers shall be 4" SERIES D letters centered in the bottom position of the sign.
- All signs shall have white retroreflectorized border and legend on a blue retroreflectorized background.
- Modify hole locations to accommodate the 2' offset from edge of shoulder.



EMERGENCY CALL BOX IDENTIFICATION SIGN
Not To Scale



CONCRETE PEDESTRIAN PAD WITH WALKWAY @ BARRIER RAIL

ORIGINAL PLAN	DATE: 9/19/03
DESIGNED BY: S. Tashiro	
CHECKED BY: S. Tashiro	
NOTED BY: S. Tashiro	
QUANTITIES BY: S. Tashiro	
REVISIONS BY: S. Tashiro	

STATE OF HAWAII
DEPARTMENT OF TRANSPORTATION
HIGHWAYS DIVISION

MISCELLANEOUS DETAILS

INTERSTATE ROUTE H-1
GUARDRAIL & SHOULDER IMPROVEMENTS
Airport Viaduct to Middle Street
Federal Aid Project No. IM-HI-1(240)

Scale: As Shown Date: Sept. 2003

SHEET No. 3 OF 3 SHEETS