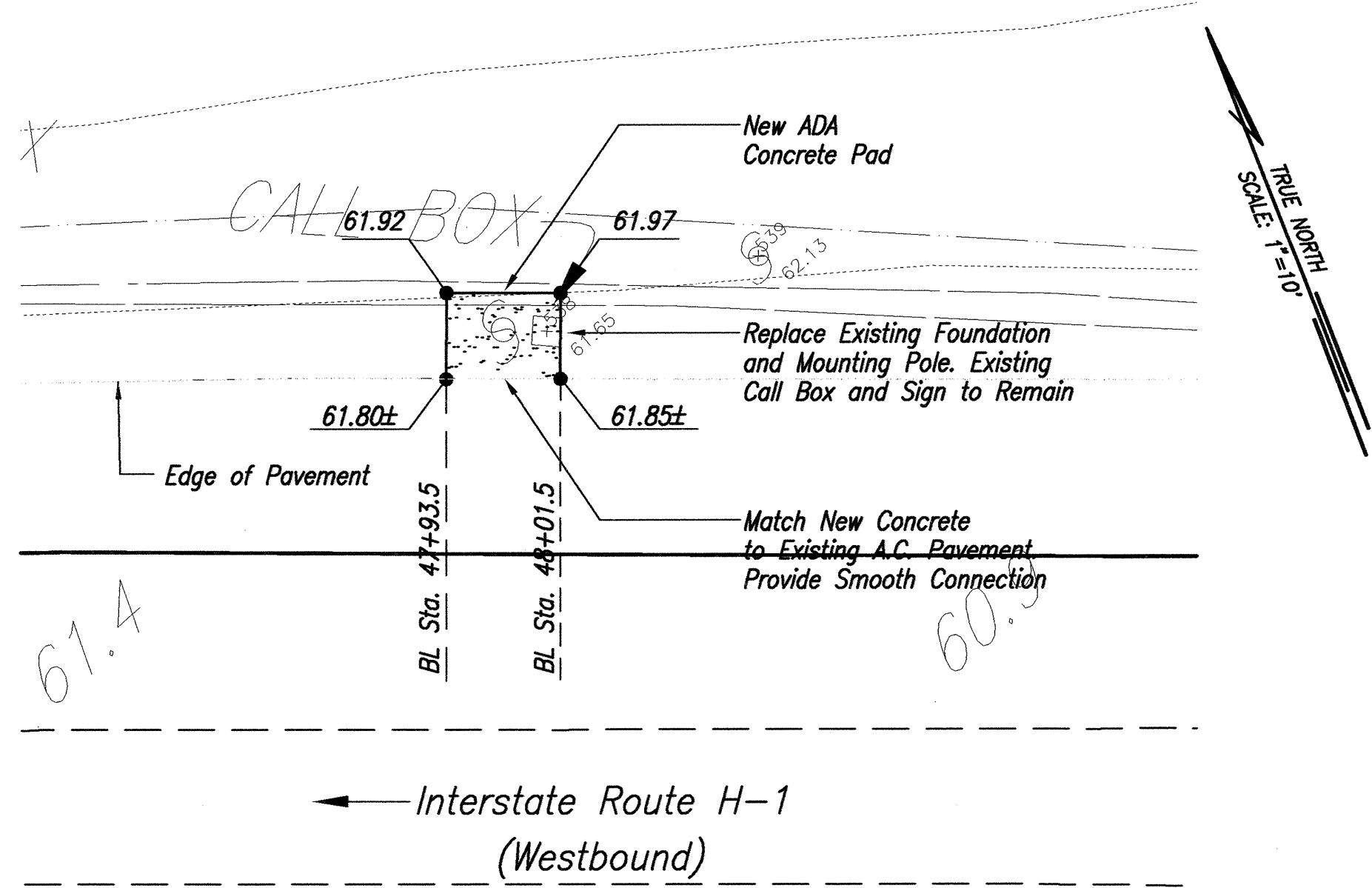
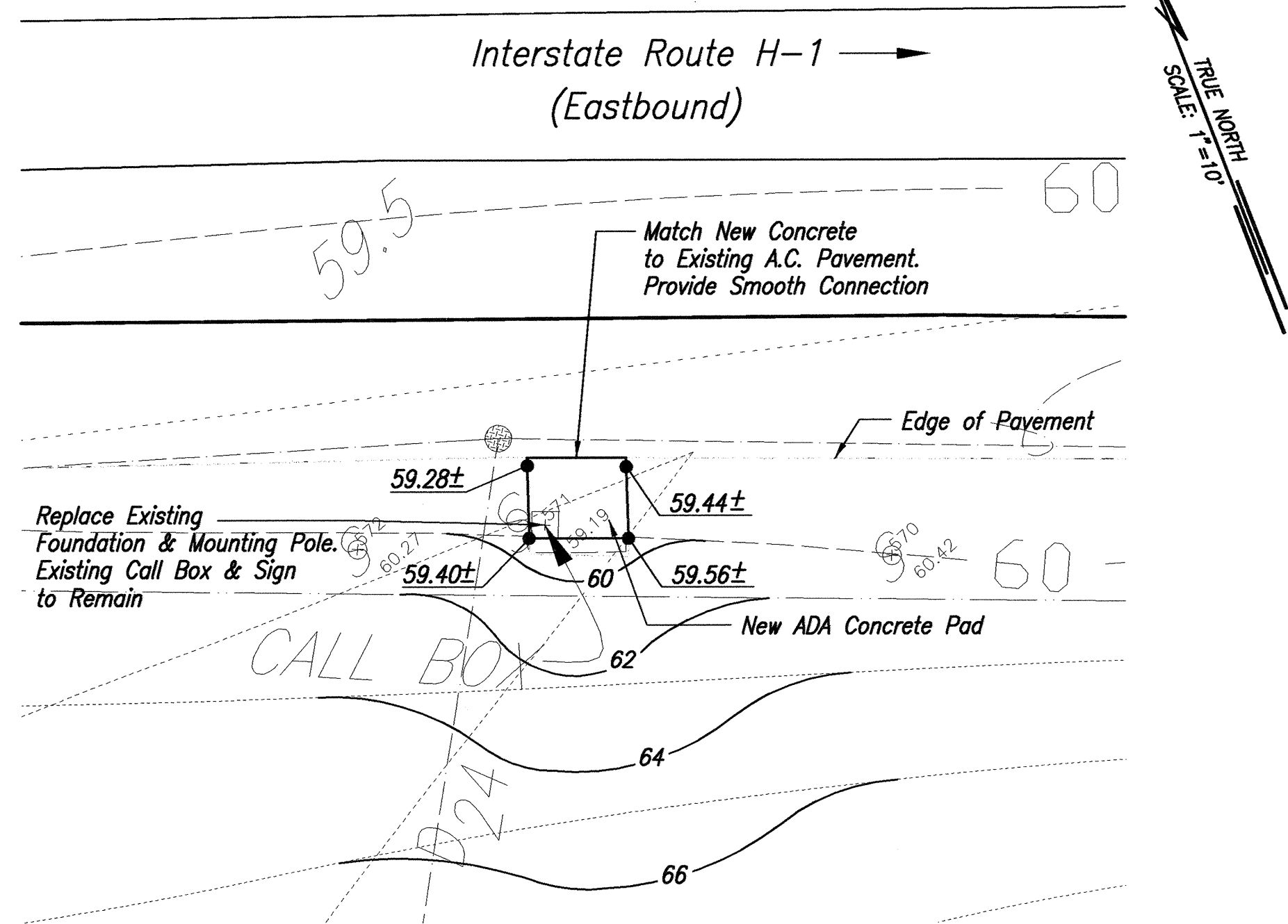


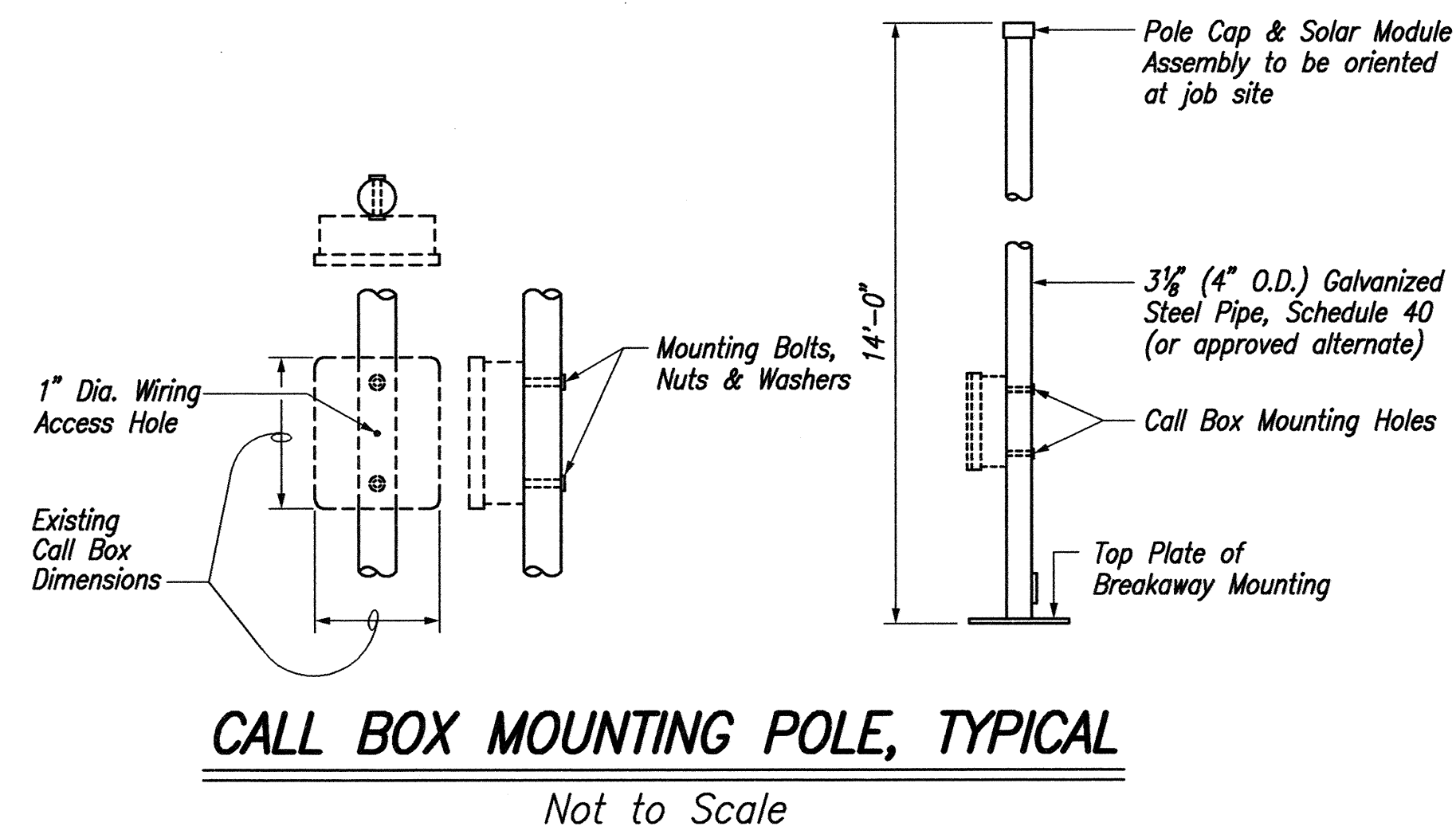
FED. ROAD DIST. NO.	STATE	PROJ. NO.	FISCAL YEAR	SHEET NO.	TOTAL SHEETS
HAWAII	HAW.	H1H-01-00M	2003	ADD. 121	234



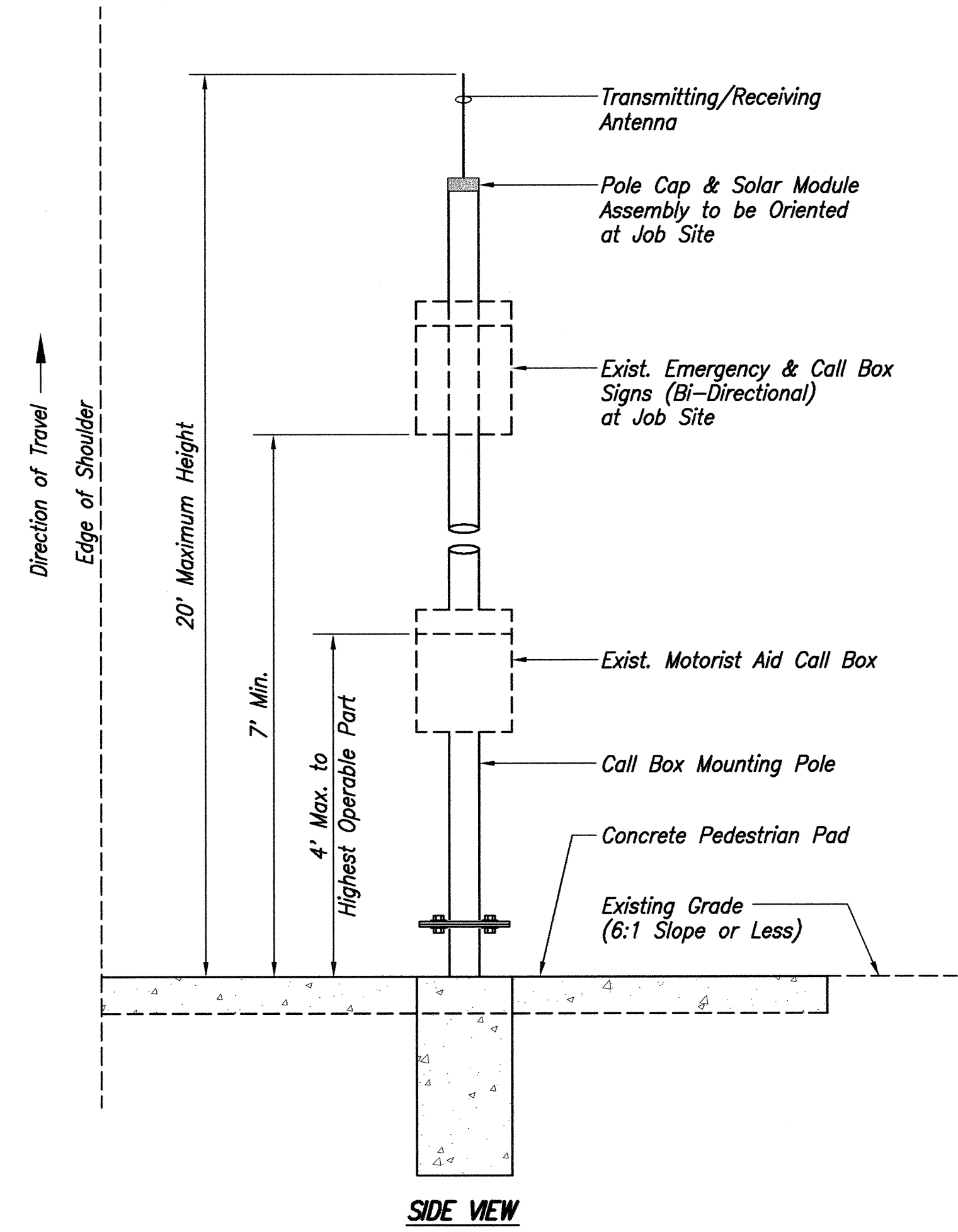
**PLAN - ADA CONCRETE PAD #1**  
Scale: 1"=10'



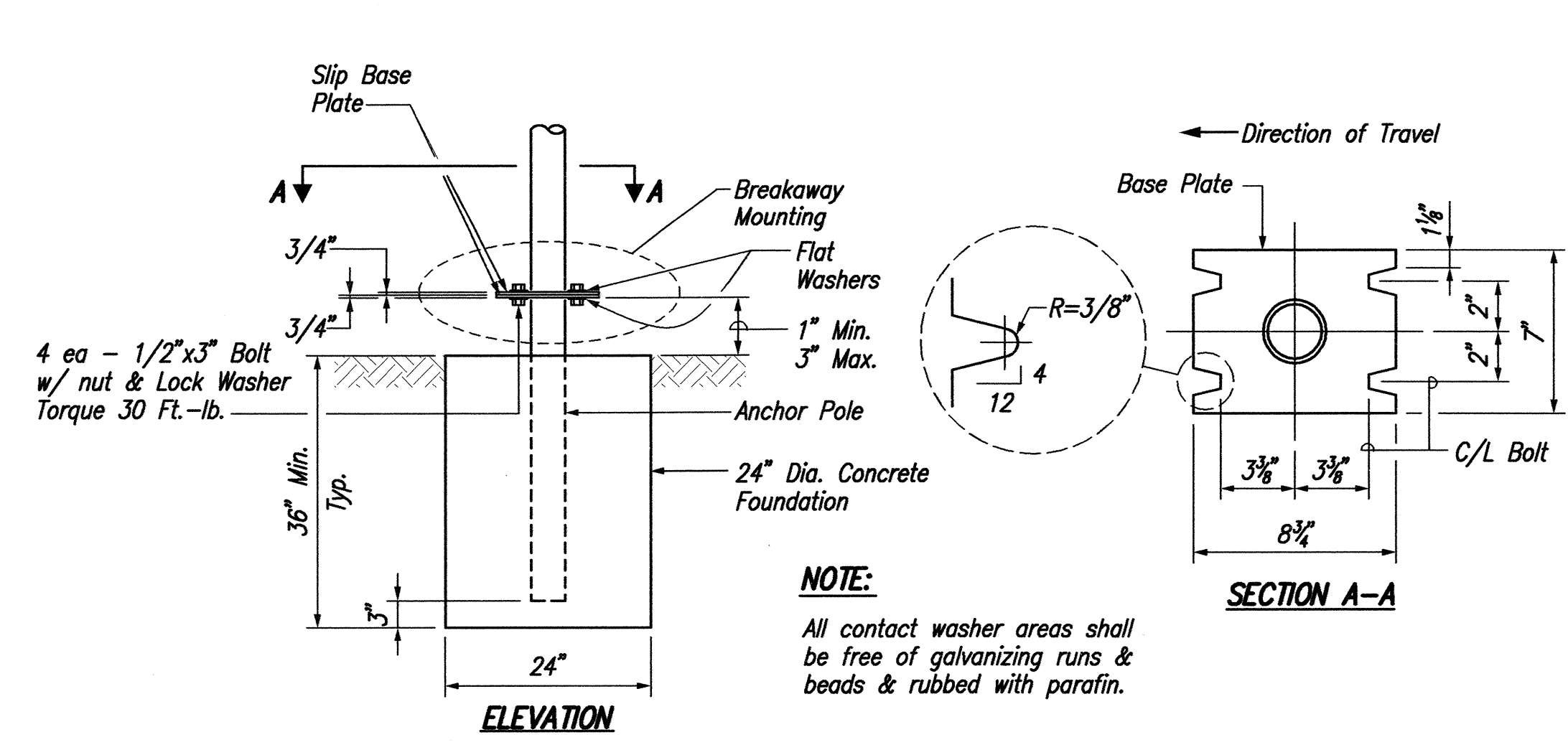
**PLAN - ADA CONCRETE PAD #2**  
Scale: 1"=10'



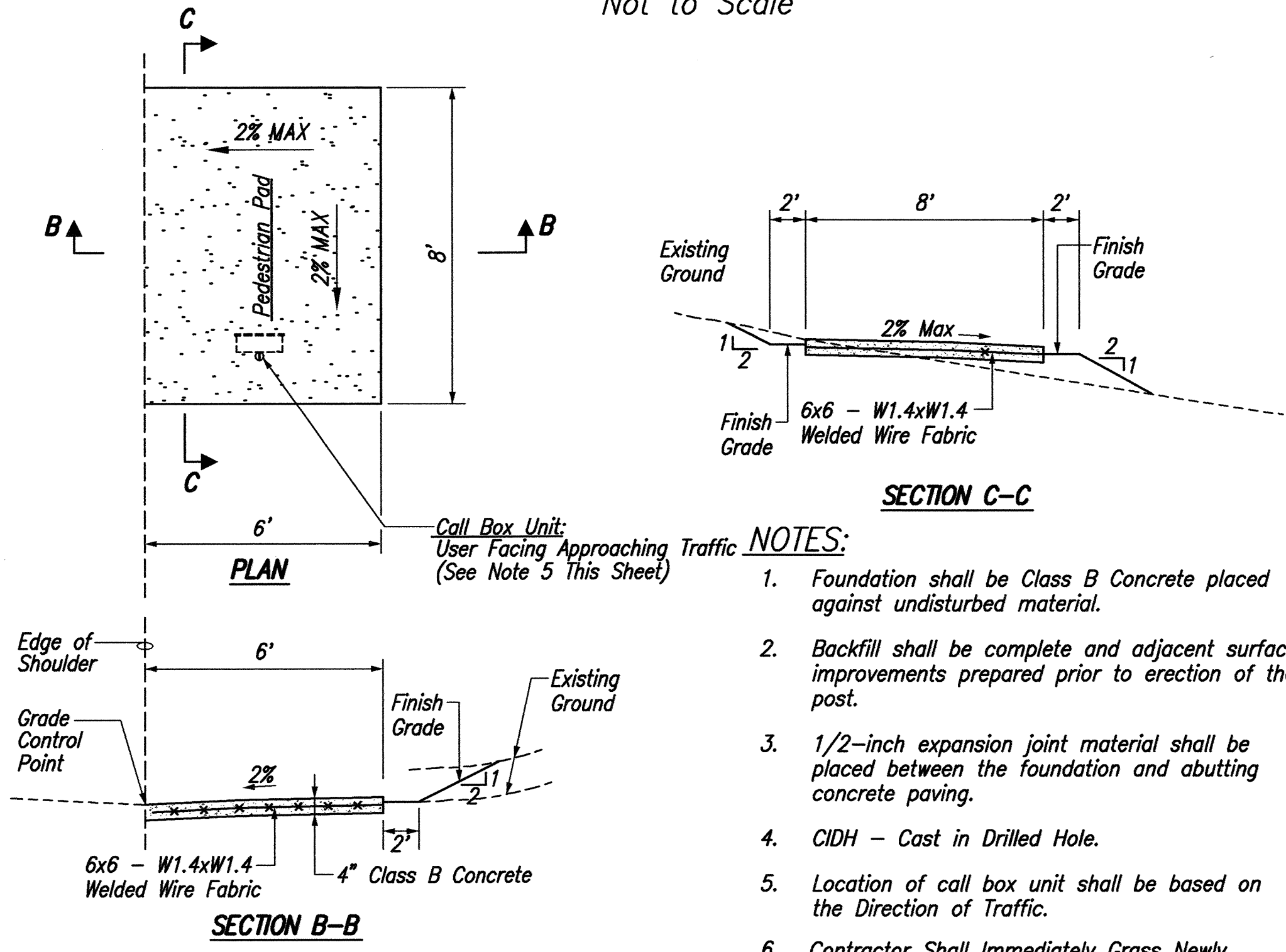
**CALL BOX MOUNTING POLE, TYPICAL**  
Not to Scale



**TYPICAL INSTALLATION**  
Not to Scale



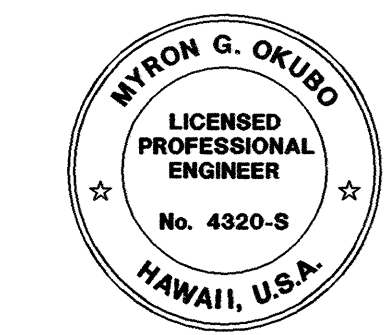
**CIDH CONCRETE FOUNDATION WITH BREAKAWAY MOUNTING**  
Not to Scale



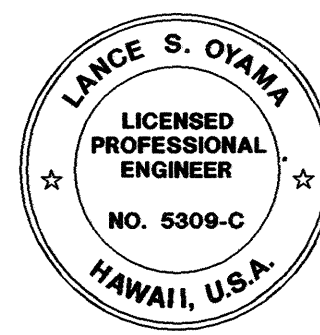
**CONCRETE PEDESTRIAN PAD WITH WALKWAY**  
Not to Scale

- NOTES:**
- Foundation shall be Class B Concrete placed against undisturbed material.
  - Backfill shall be complete and adjacent surface improvements prepared prior to erection of the post.
  - 1/2-inch expansion joint material shall be placed between the foundation and abutting concrete paving.
  - CIDH - Cast in Drilled Hole.
  - Location of call box unit shall be based on the Direction of Traffic.
  - Contractor Shall Immediately Grass Newly Graded Areas.

6-18-03	Added Section C-C Detail and Note 6.
DATE	REVISION
STATE OF HAWAII DEPARTMENT OF TRANSPORTATION HIGHWAYS DIVISION	
<b>ADA CONCRETE PAD</b>	
INTERSTATE ROUTE H-1 REHABILITATION OLA LANE TO KALIHI STREET PROJECT NO. H1H-01-00M	
Scale: As Noted	Date: October 31, 2002
SHEET No. C-52 OF C-59 SHEETS	



THIS WORK WAS PREPARED BY  
ME OR UNDER MY SUPERVISION.  
*Myron G. Okubo*  
SIGNATURE APRIL 30, 2004  
EXPIRATION DATE



THIS WORK WAS PREPARED BY  
ME OR UNDER MY SUPERVISION.  
*Lance S. Oyama*  
SIGNATURE APRIL 30, 2004  
EXPIRATION DATE