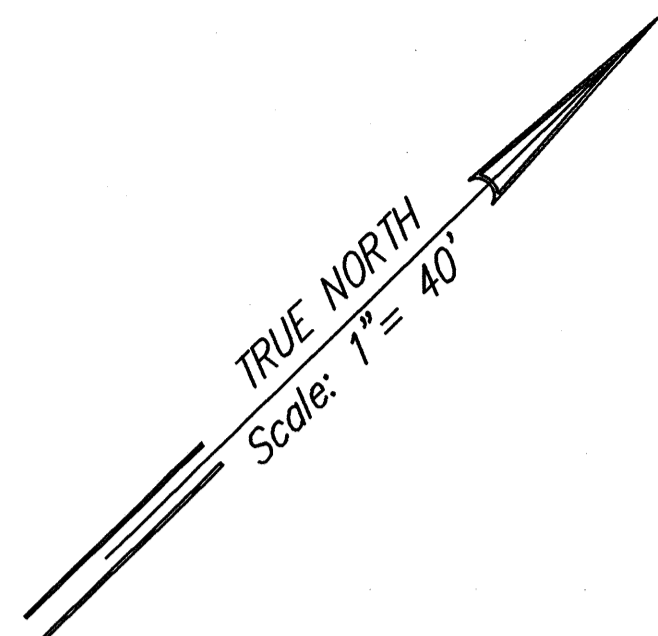
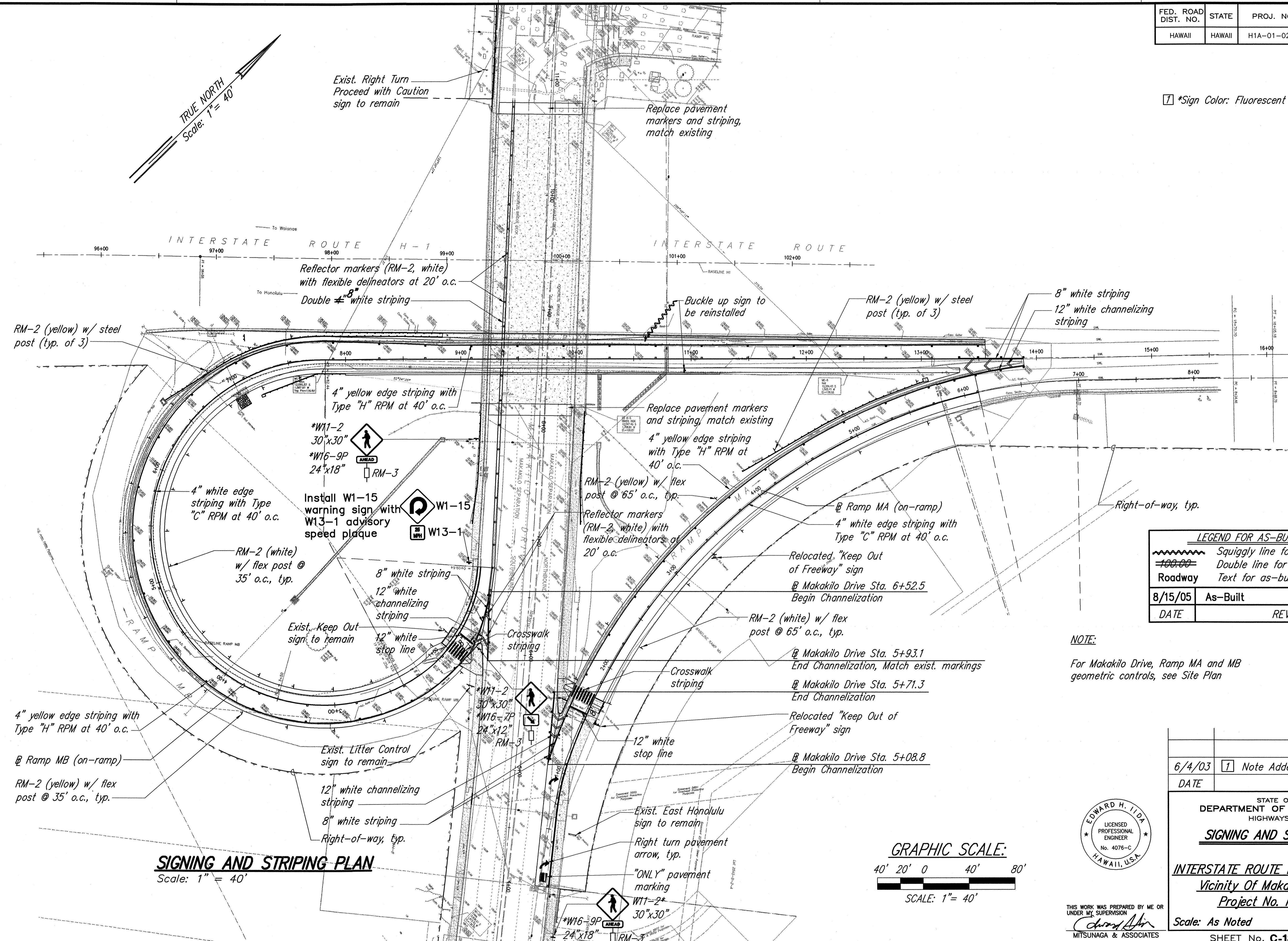


FED. ROAD DIST. NO.	STATE	PROJ. NO.	FISCAL YEAR	SHEET NO.	TOTAL SHEETS
HAWAII	HAWAII	H1A-01-02M	2003	ADD 15	88



☐ \*Sign Color: Fluorescent Yellow Green

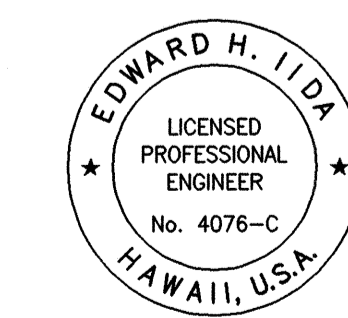
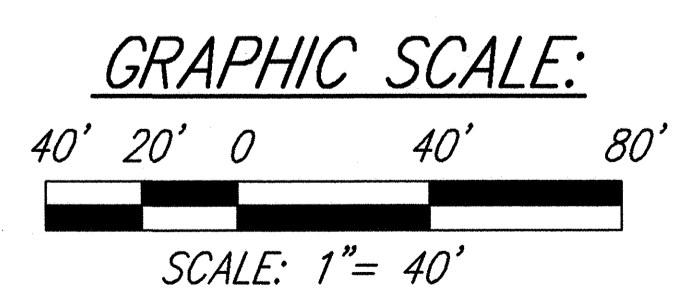


LEGEND FOR AS-BUILT POSTING	
	Squiggly line for as-built deletion
	Double line for as-built deletion
Roadway	Text for as-built posting
8/15/05	As-Built
DATE	REVISION

NOTE:  
For Makakilo Drive, Ramp MA and MB geometric controls, see Site Plan

SURVEY PLOTTED BY	DATE
DRAWN BY	4/01
TRACED BY	4/01
QUANTITIES BY	4/01
CHECKED BY	4/01
ORIGINAL PLAN	No.
NOTE BOOK	No.

**SIGNING AND STRIPING PLAN**  
Scale: 1" = 40'



THIS WORK WAS PREPARED BY ME OR UNDER MY SUPERVISION  
*Edward H. Iida*  
MITSUNAGA & ASSOCIATES

6/4/03	☐ Note Added
DATE	REVISION
STATE OF HAWAII DEPARTMENT OF TRANSPORTATION HIGHWAYS DIVISION	
<b>SIGNING AND STRIPING PLAN</b>	
INTERSTATE ROUTE H-1 REHABILITATION Vicinity Of Makakilo Interchange Project No. H1A-01-02M	
Scale: As Noted	Date: April 2003
SHEET No. C-13 OF 42 SHEETS	