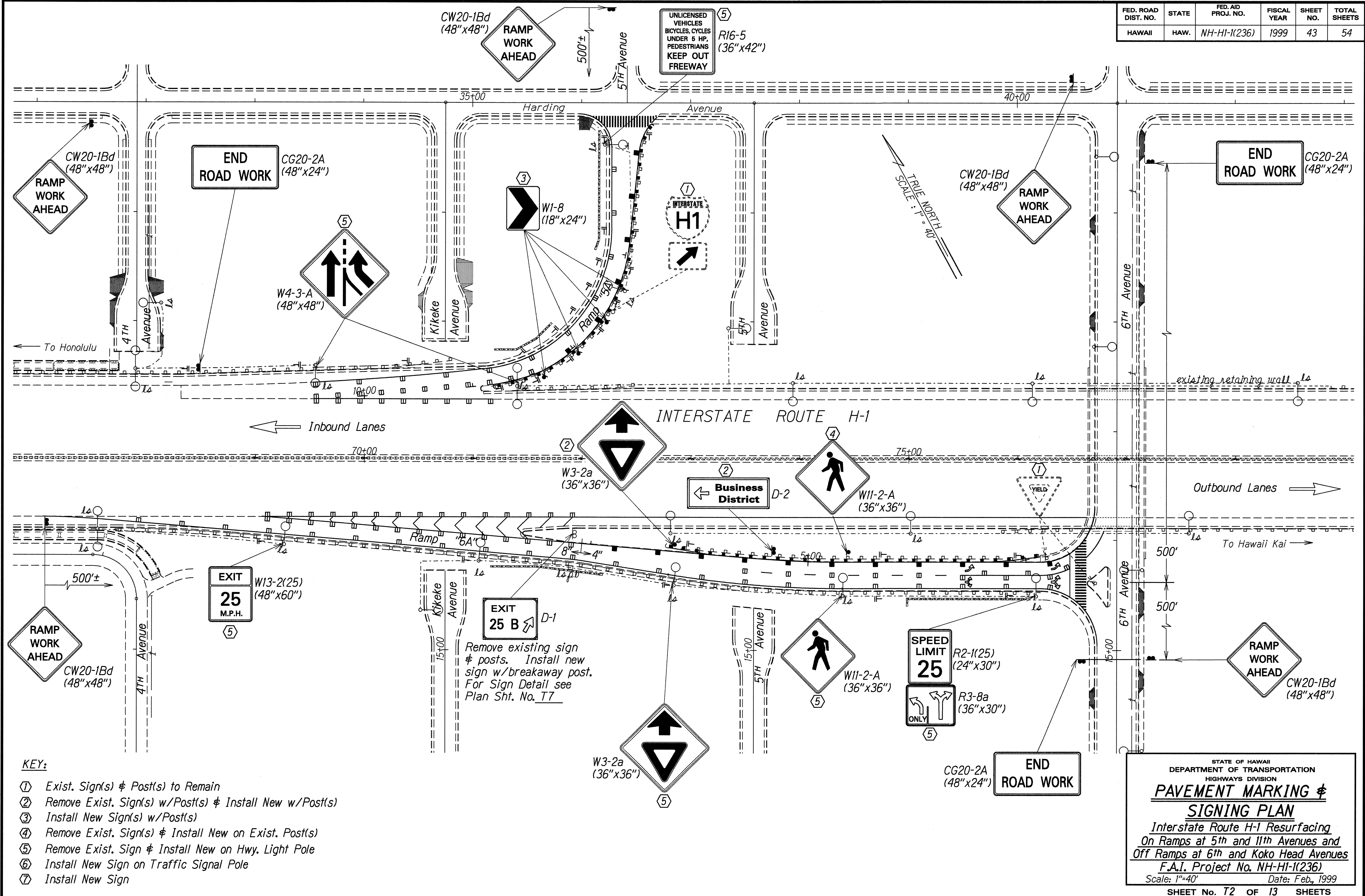


| FED. ROAD DIST. NO. | STATE | FED. AID PROJ. NO. | FISCAL YEAR | SHEET NO. | TOTAL SHEETS |
|---------------------|-------|--------------------|-------------|-----------|--------------|
| HAWAII              | HAW.  | NH-HI-1(236)       | 1999        | 43        | 54           |



|                   |       |
|-------------------|-------|
| DATE              | _____ |
| SURVEY PLOTTED BY | _____ |
| DESIGNED BY       | _____ |
| NOTES CHECKED BY  | _____ |
| QUANTITIES BY     | _____ |
| CHECKED BY        | _____ |

- KEY:**
- ① Exist. Sign(s) & Post(s) to Remain
  - ② Remove Exist. Sign(s) w/Post(s) & Install New w/Post(s)
  - ③ Install New Sign(s) w/Post(s)
  - ④ Remove Exist. Sign(s) & Install New on Exist. Post(s)
  - ⑤ Remove Exist. Sign & Install New on Hwy. Light Pole
  - ⑥ Install New Sign on Traffic Signal Pole
  - ⑦ Install New Sign

STATE OF HAWAII  
DEPARTMENT OF TRANSPORTATION  
HIGHWAYS DIVISION

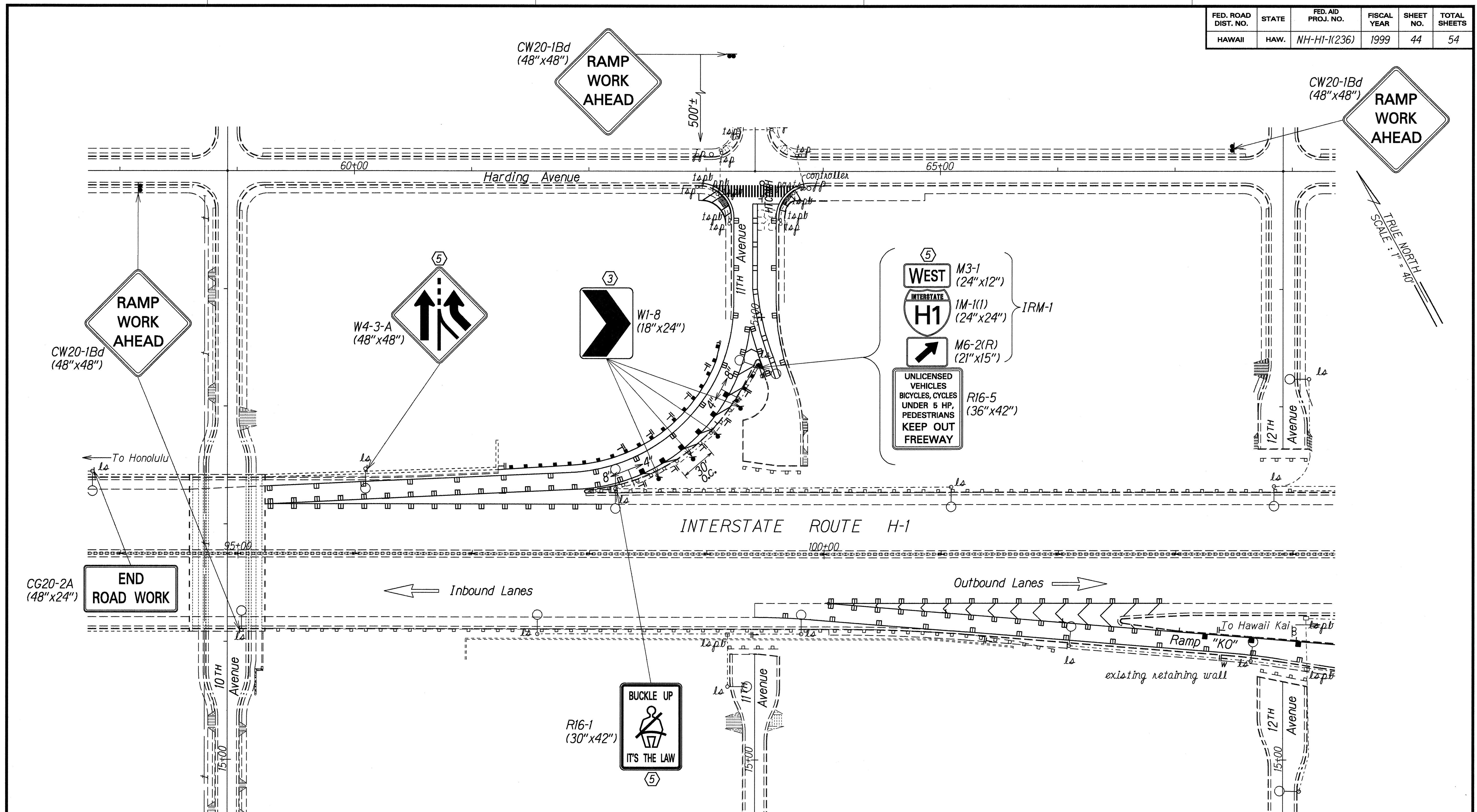
**PAVEMENT MARKING &  
SIGNING PLAN**

*Interstate Route H-1 Resurfacing  
On Ramps at 5th and 11th Avenues and  
Off Ramps at 6th and Koko Head Avenues*

F.A.I. Project No. NH-HI-1(236)  
Scale: 1"=40' Date: Feb., 1999

SHEET No. T2 OF 13 SHEETS

| FED. ROAD DIST. NO. | STATE | FED. AID PROJ. NO. | FISCAL YEAR | SHEET NO. | TOTAL SHEETS |
|---------------------|-------|--------------------|-------------|-----------|--------------|
| HAWAII              | HAW.  | NH-HI-1(236)       | 1999        | 44        | 54           |



|                      |      |
|----------------------|------|
| SURVEY PLOTTED BY    | DATE |
| DRAWN BY M. Takafuji | x    |
| TRACED BY S. Simon   |      |
| QUANTITIES BY        |      |
| CHECKED BY           |      |
| ORIGINAL PLAN        |      |
| NOTE BOOK            |      |
| 10/1/99              |      |
| 10/1/99              |      |
| 10/1/99              |      |
| 10/1/99              |      |
| 10/1/99              |      |

- KEY:**
- ① Exist. Sign(s) & Post(s) to Remain
  - ② Remove Exist. Sign(s) w/Post(s) & Install New w/Post(s)
  - ③ Install New Sign(s) w/Post(s)
  - ④ Remove Exist. Sign(s) & Install New on Exist. Post(s)
  - ⑤ Remove Exist. Sign & Install New on Hwy. Light Pole
  - ⑥ Install New Sign on Traffic Signal Pole
  - ⑦ Install New Sign

STATE OF HAWAII  
DEPARTMENT OF TRANSPORTATION  
HIGHWAYS DIVISION

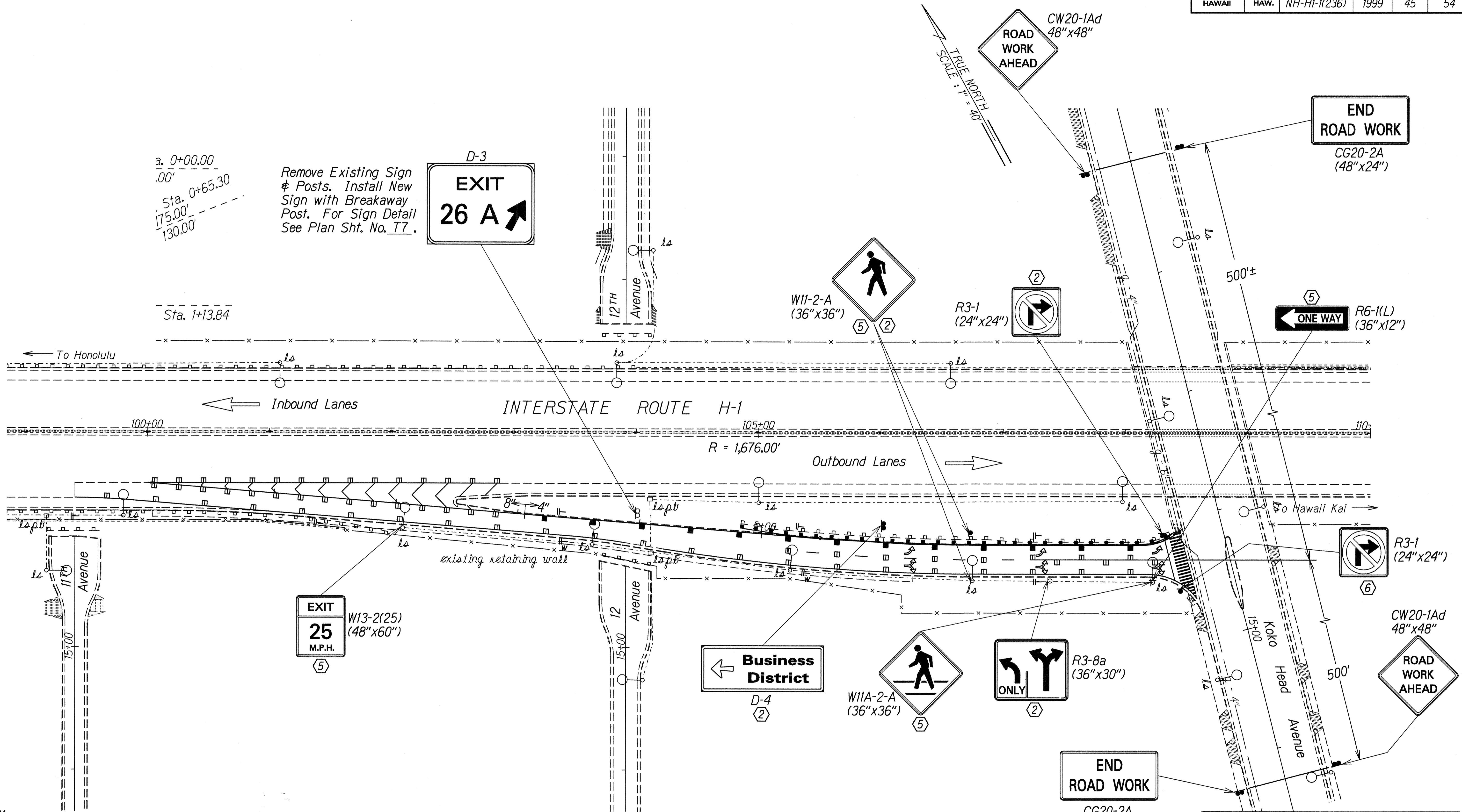
**PAVEMENT MARKING &  
SIGNING PLAN**

*Interstate Route H-1 Resurfacing  
On Ramps at 5th and 11th Avenues and  
Off Ramps at 6th and Koko Head Avenues  
F.A.I. Project No. NH-HI-1(236)*

Scale: 1"=40'      Date: Feb., 1999

SHEET No. 73 OF 13 SHEETS

| FED. ROAD DIST. NO. | STATE | FED. AID PROJ. NO. | FISCAL YEAR | SHEET NO. | TOTAL SHEETS |
|---------------------|-------|--------------------|-------------|-----------|--------------|
| HAWAII              | HAW.  | NH-HI-1(236)       | 1999        | 45        | 54           |



Sta. 0+00.00  
 Sta. 0+65.30  
 175.00'  
 130.00'

Remove Existing Sign & Posts. Install New Sign with Breakaway Post. For Sign Detail See Plan Sht. No. 17.

D-3  
**EXIT 26 A** ↗

W11-2-A  
 (36"x36")

R3-1  
 (24"x24")

ONE WAY  
 R6-1(L)  
 (36"x12")

**EXIT 25**  
 M.P.H.  
 W13-2(25)  
 (48"x60")

**Business District**  
 D-4  
 (2)

W11A-2-A  
 (36"x36")

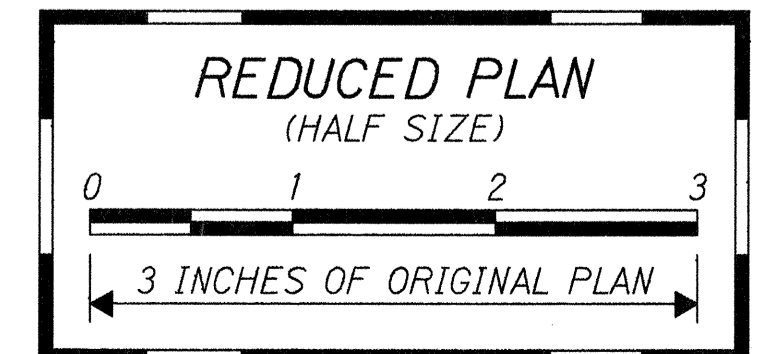
R3-8a  
 (36"x30")  
 ONLY

**END ROAD WORK**  
 CG20-2A  
 (48"x24")

**ROAD WORK AHEAD**  
 CW20-1Ad  
 48"x48"

**KEY:**

- ① Exist. Sign(s) & Post(s) to Remain
- ② Remove Exist. Sign(s) w/Post(s) & Install New w/Post(s)
- ③ Install New Sign(s) w/Post(s)
- ④ Remove Exist. Sign(s) & Install New on Exist. Post(s)
- ⑤ Remove Exist. Sign & Install New on Hwy. Light Pole
- ⑥ Install New Sign on Traffic Signal Pole
- ⑦ Install New Sign



STATE OF HAWAII  
 DEPARTMENT OF TRANSPORTATION  
 HIGHWAYS DIVISION

**PAVEMENT MARKING & SIGNING PLAN**

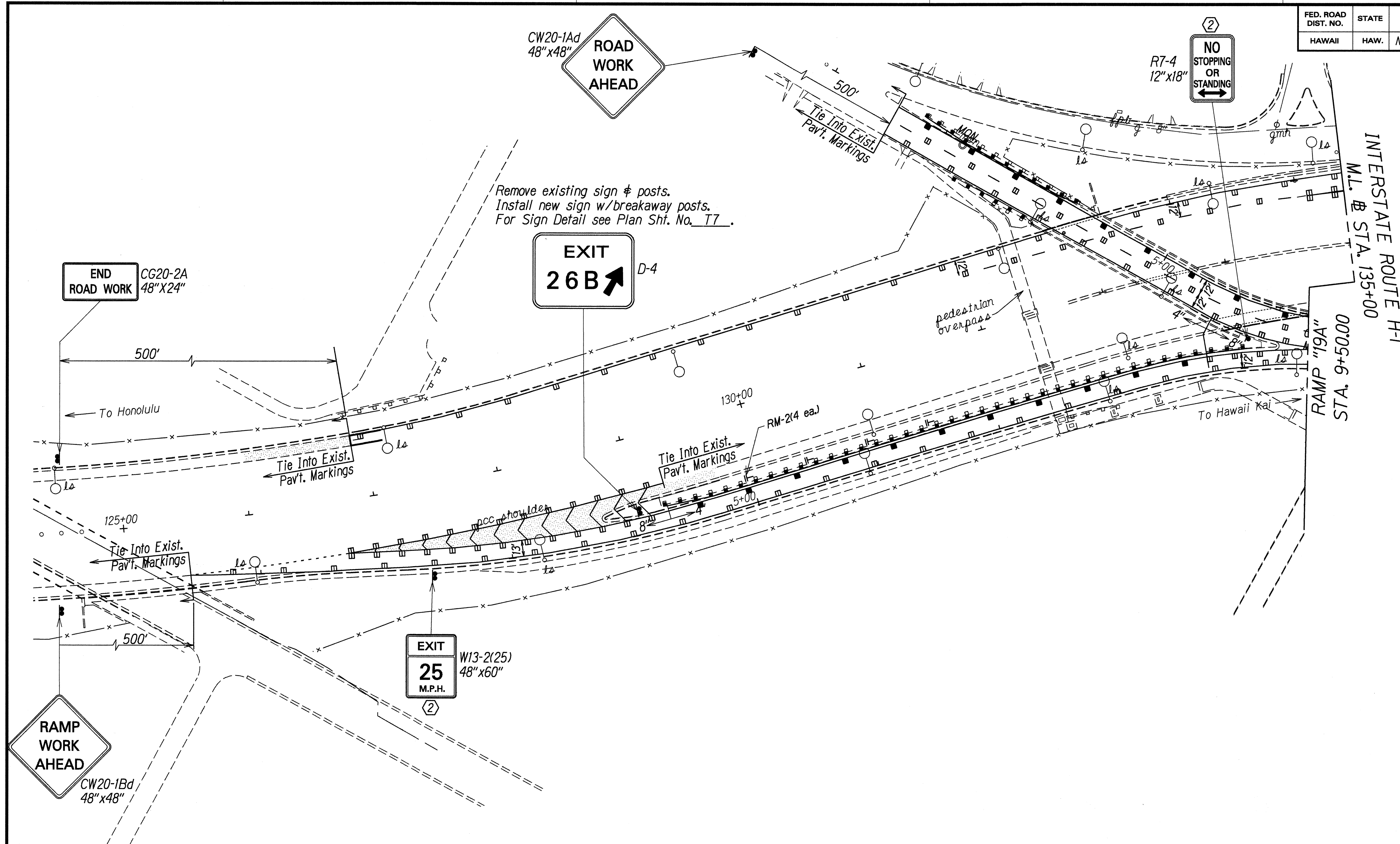
*Interstate Route H-1 Resurfacing  
 On Ramps at 5th and 11th Avenues and  
 Off Ramps at 6th and Koko Head Avenues  
 F.A.I. Project No. NH-HI-1(236)*

Scale: 1"=40' Date: Feb., 1999

SHEET No. T4 OF 13 SHEETS

SURVEY PLOTTED BY: DATE: \_\_\_\_\_  
 DRAWN BY: M. Takafuji  
 DESIGNED BY: Stewart Yoshida  
 CHECKED BY: Tolmay  
 ORIGINAL PLAN NO. q1h1p3

| FED. ROAD DIST. NO. | STATE | FED. AID PROJ. NO. | FISCAL YEAR | SHEET NO. | TOTAL SHEETS |
|---------------------|-------|--------------------|-------------|-----------|--------------|
| HAWAII              | HAW.  | NH-HI-1(236)       | 1999        | 46        | 54           |



Remove existing sign & posts.  
Install new sign w/breakaway posts.  
For Sign Detail see Plan Sht. No. T7.

END ROAD WORK CG20-2A  
48"X24"

EXIT 26B  
D-4

EXIT 25  
M.P.H.  
W13-2(25)  
48"X60"

RAMP WORK AHEAD  
CW20-1Bd  
48"X48"

**KEY:**

- ① Exist. Sign(s) & Post(s) to Remain
- ② Remove Exist. Sign(s) w/Post(s) & Install New w/Post(s)
- ③ Install New Sign(s) w/Post(s)
- ④ Remove Exist. Sign(s) & Install New on Exist. Post(s)
- ⑤ Remove Exist. Sign & Install New on Hwy. Light Pole
- ⑥ Install New Sign on Traffic Signal Pole
- ⑦ Install New Sign

ORIGINAL PLAN  
DATE: 12/11/98  
SURVEY PLOTTED BY: M. Takahashi  
DRAWN BY: S. S. S. S. S.  
NOTE BOOK: 102.000  
QUANTITIES BY: S. S. S. S. S.  
CHECKED BY: S. S. S. S. S.

STATE OF HAWAII  
DEPARTMENT OF TRANSPORTATION  
HIGHWAYS DIVISION

**PAVEMENT MARKING  
& SIGNING PLAN**

Interstate Route H-1 Resurfacing  
On Ramps at 5th and 11<sup>th</sup> Avenues and  
Off Ramps at 6th and Koko Head Avenues  
F.A.I. Project No. NH-HI-1(236)

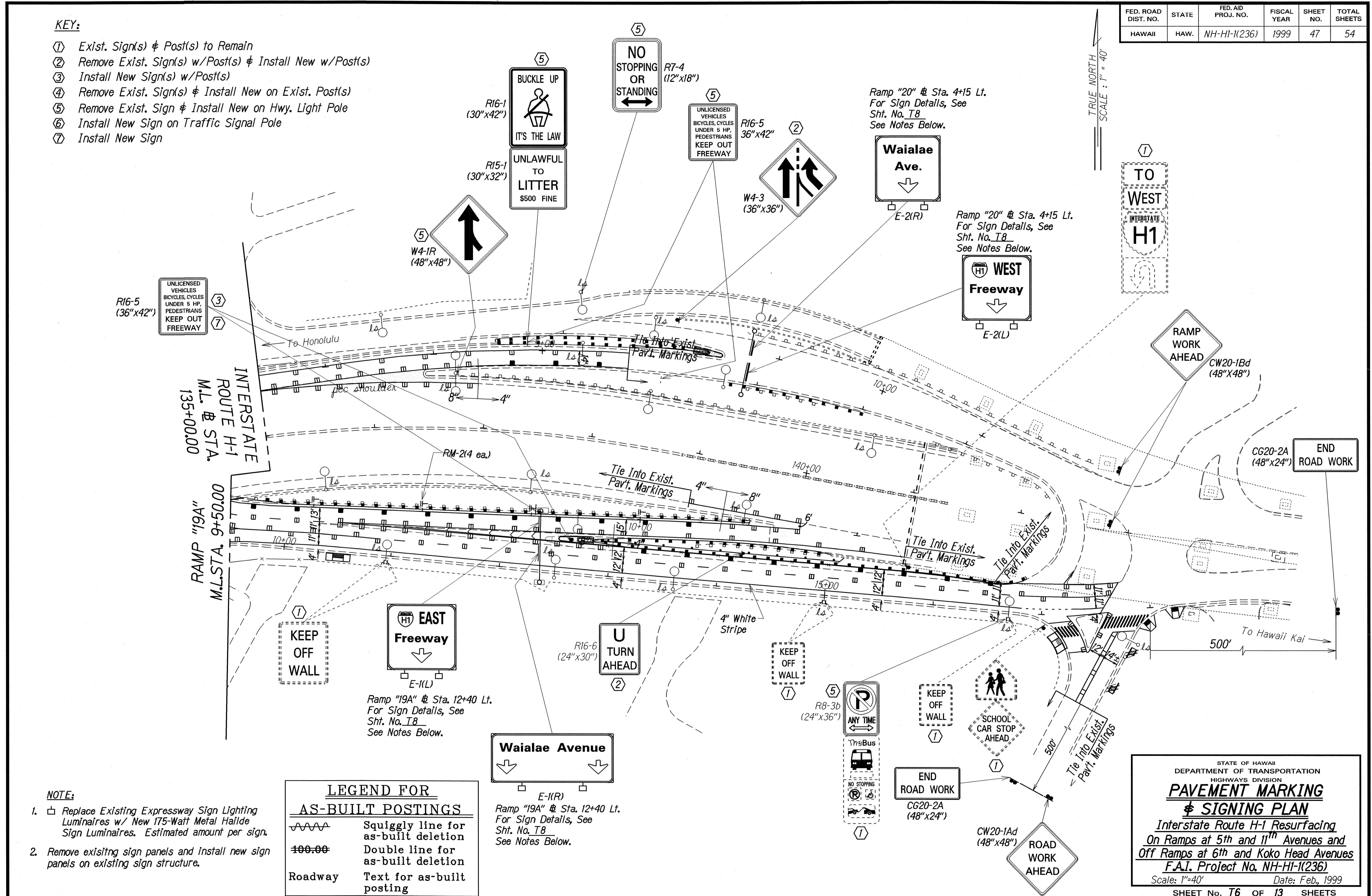
Scale: 1"=40'      Date: Feb., 1999

SHEET No. T5 OF 13 SHEETS

| FED. ROAD DIST. NO. | STATE | FED. AID PROJ. NO. | FISCAL YEAR | SHEET NO. | TOTAL SHEETS |
|---------------------|-------|--------------------|-------------|-----------|--------------|
| HAWAII              | HAW.  | NH-HI-1(236)       | 1999        | 47        | 54           |

**KEY:**

- ① Exist. Sign(s) & Post(s) to Remain
- ② Remove Exist. Sign(s) w/Post(s) & Install New w/Post(s)
- ③ Install New Sign(s) w/Post(s)
- ④ Remove Exist. Sign(s) & Install New on Exist. Post(s)
- ⑤ Remove Exist. Sign & Install New on Hwy. Light Pole
- ⑥ Install New Sign on Traffic Signal Pole
- ⑦ Install New Sign



**NOTE:**

- 1. ☐ Replace Existing Expressway Sign Lighting Luminaires w/ New 175-Watt Metal Halide Sign Luminaires. Estimated amount per sign.
- 2. Remove existing sign panels and install new sign panels on existing sign structure.

**LEGEND FOR AS-BUILT POSTINGS**

|         |                                     |
|---------|-------------------------------------|
|         | Squiggly line for as-built deletion |
|         | Double line for as-built deletion   |
| Roadway | Text for as-built posting           |

**Waiialae Avenue**  
E-(R)  
Ramp "19A" @ Sta. 12+40 Lt.  
For Sign Details, See Sht. No. T8  
See Notes Below.

**EAST Freeway**  
E-(KL)  
Ramp "19A" @ Sta. 12+40 Lt.  
For Sign Details, See Sht. No. T8  
See Notes Below.

**Waiialae Ave.**  
E-2(R)  
Ramp "20" @ Sta. 4+15 Lt.  
For Sign Details, See Sht. No. T8  
See Notes Below.

**WEST Freeway**  
E-2(L)  
Ramp "20" @ Sta. 4+15 Lt.  
For Sign Details, See Sht. No. T8  
See Notes Below.

SURVEY PLATTED BY: DATE: 12/11/2002  
 DRAWN BY: M. L. F. 11/11/2002  
 DESIGNED BY: S. J. 11/11/2002  
 CHECKED BY: S. J. 11/11/2002

STATE OF HAWAII  
 DEPARTMENT OF TRANSPORTATION  
 HIGHWAYS DIVISION  
**PAVEMENT MARKING & SIGNING PLAN**  
 Interstate Route H-1 Resurfacing  
 On Ramps at 5th and 11th Avenues and  
 Off Ramps at 6th and Koko Head Avenues  
 F.A.I. Project No. NH-HI-1(236)  
 Scale: 1"=40' Date: Feb., 1999  
 SHEET No. T6 OF 13 SHEETS