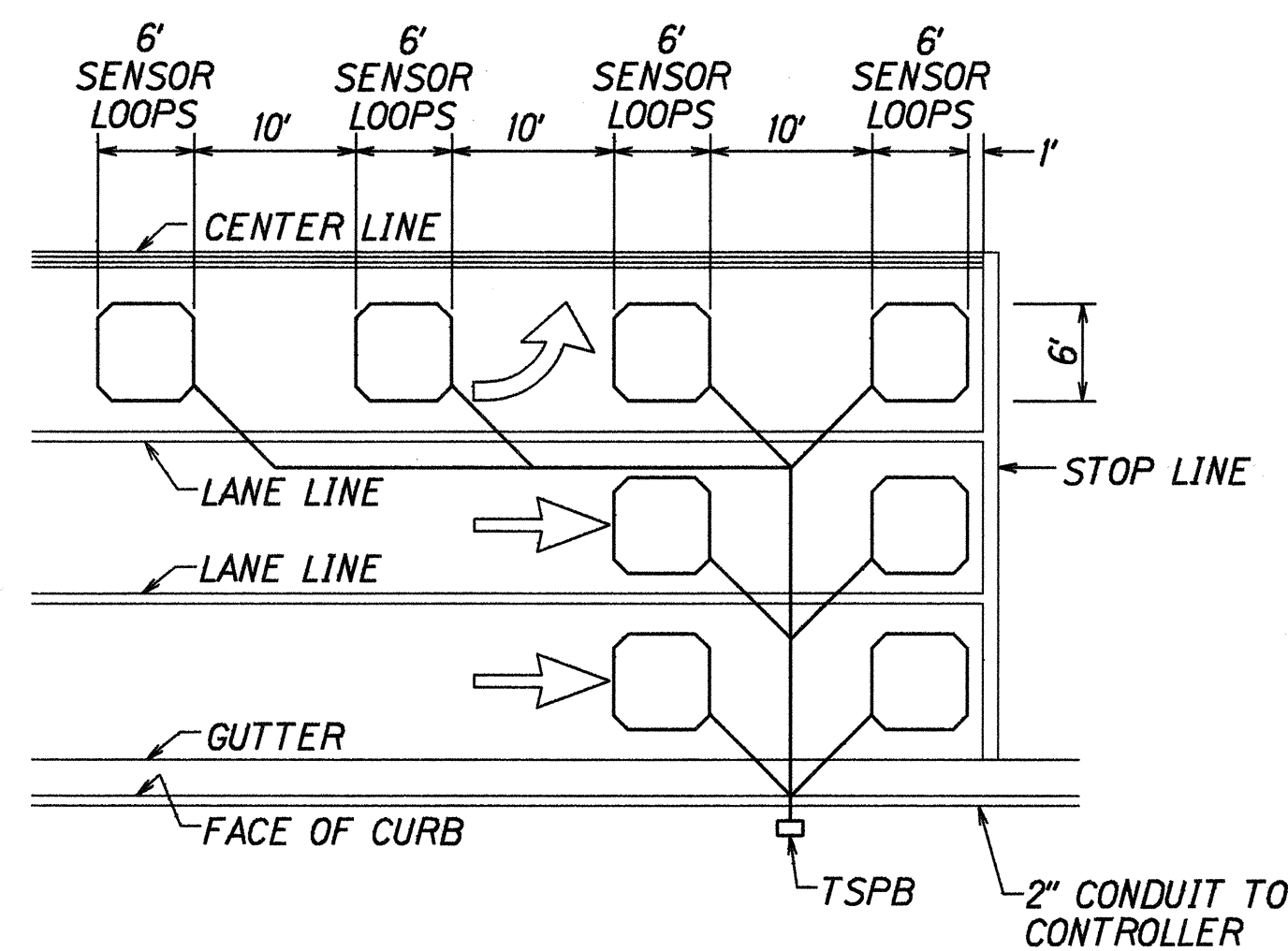
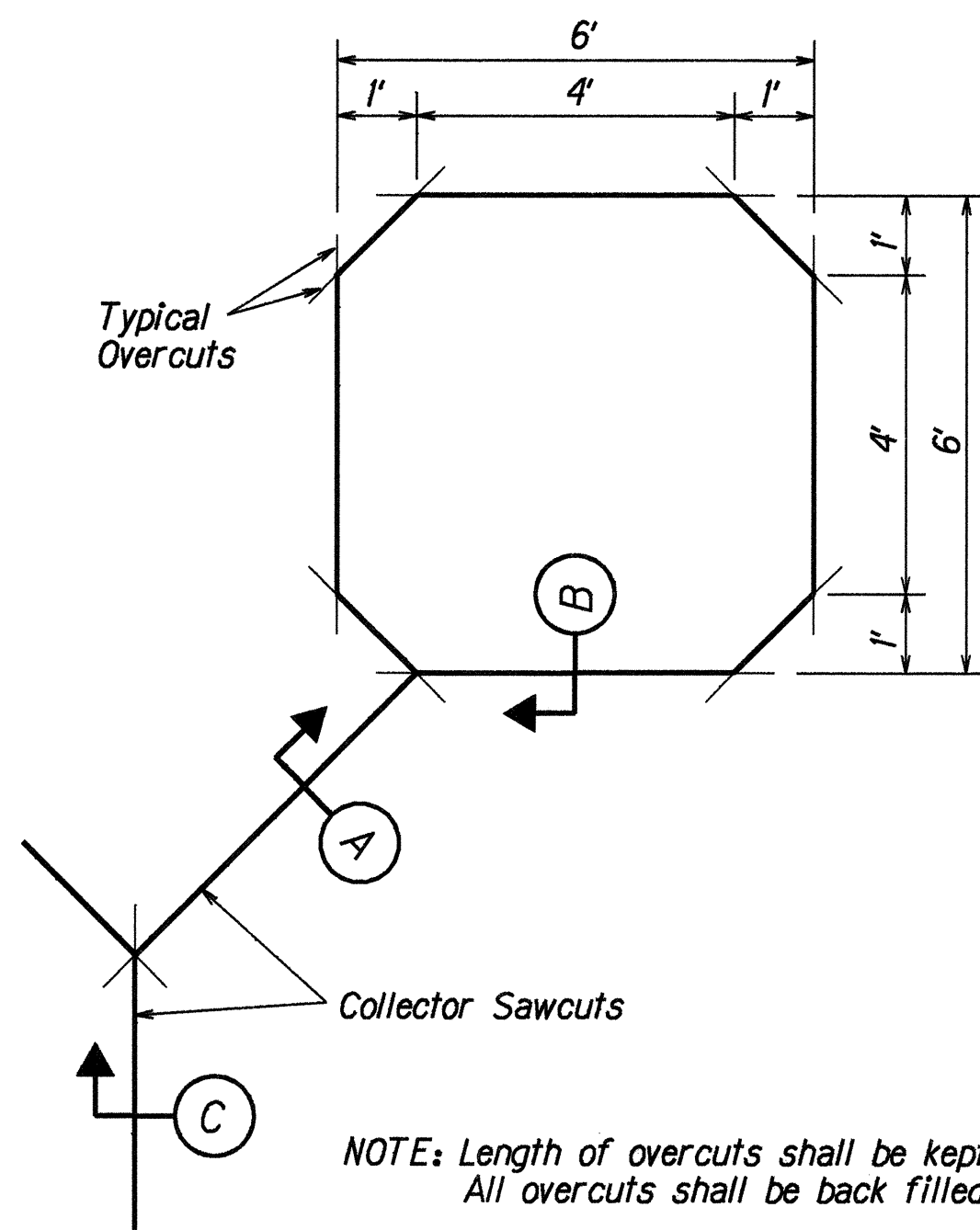


FED. ROAD DIST. NO.	STATE	FED. AID PROJ. NO.	FISCAL YEAR	SHEET NO.	TOTAL SHEETS
HAWAII	HAW.	NH-HI-1(236)	1999	54	54

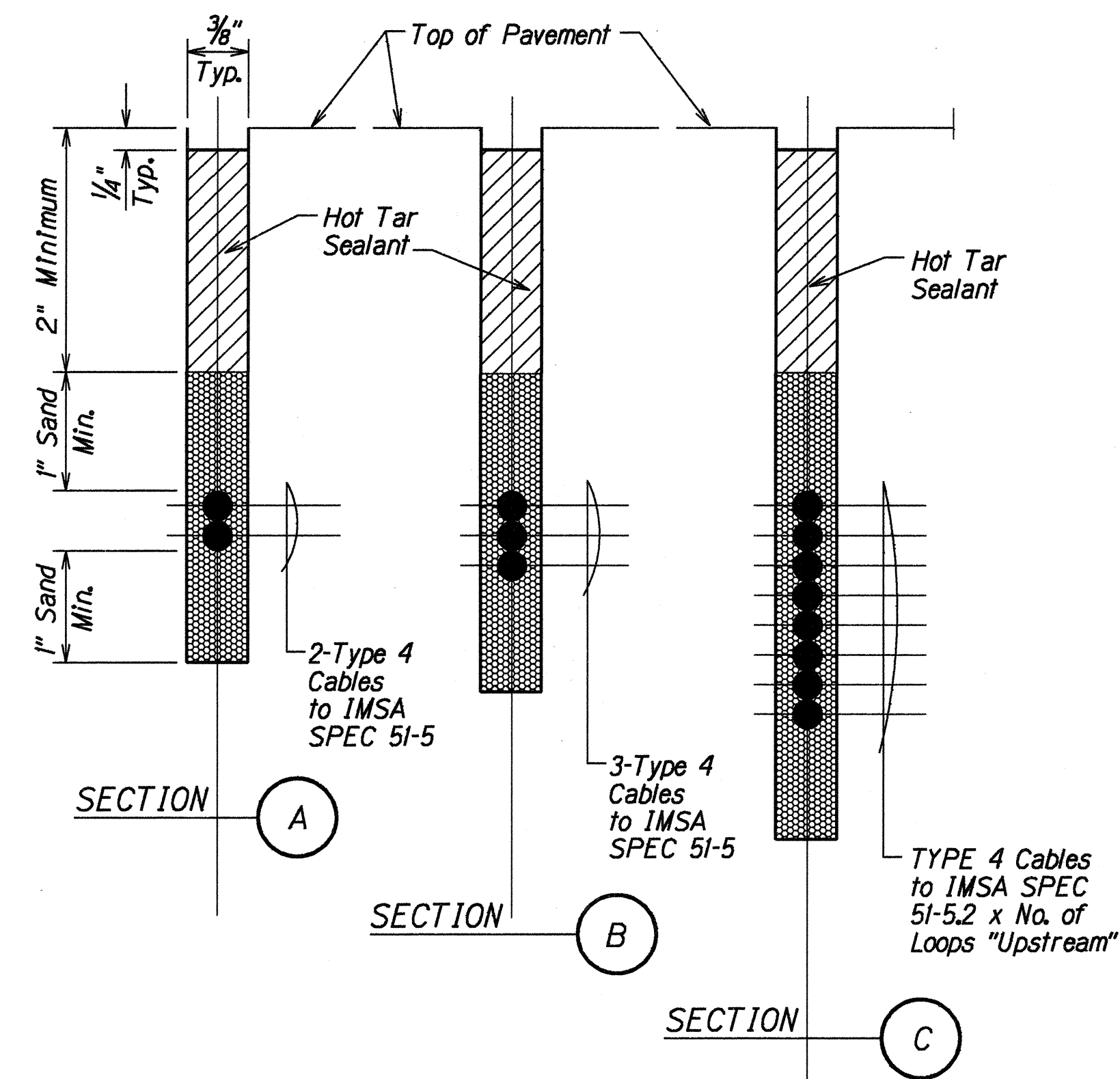


- NOTES:
1. Center sensor loops in lanes.
 2. Collector cables shall be twisted 2 turns per foot.
 3. Number of loops and locations vary. See project plans.
 4. Number and locations of collector sawcuts may be varied in the field to suit.

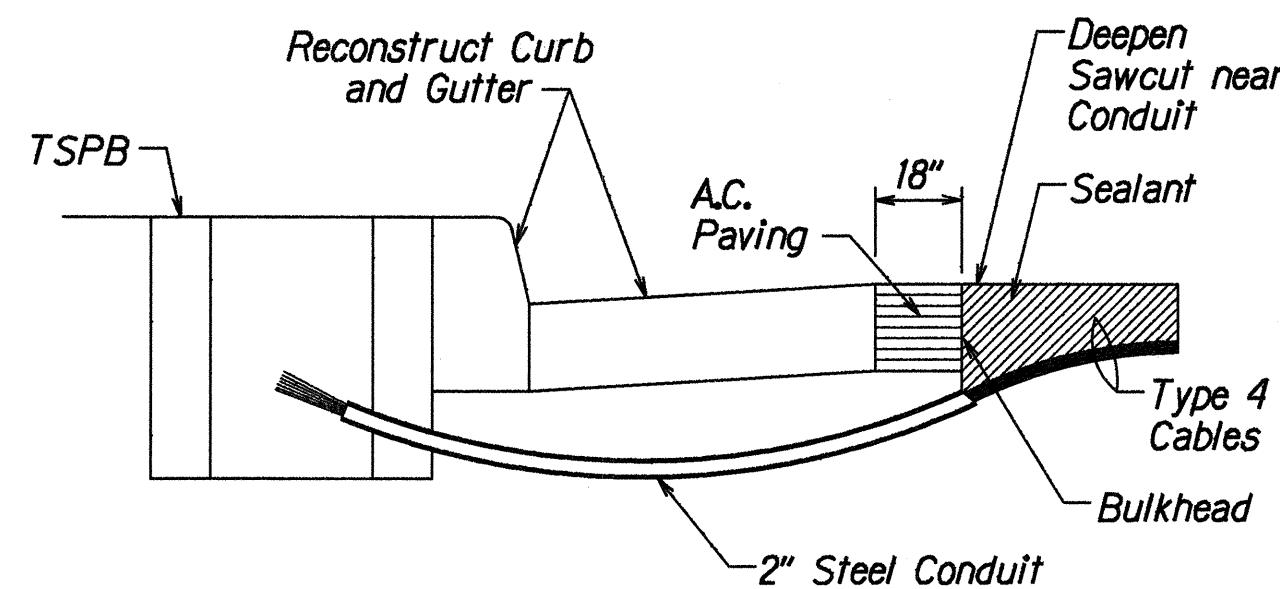
TYPICAL SENSOR LOOP LAYOUT



TYPICAL SENSOR LOOP SAWCUT DETAIL



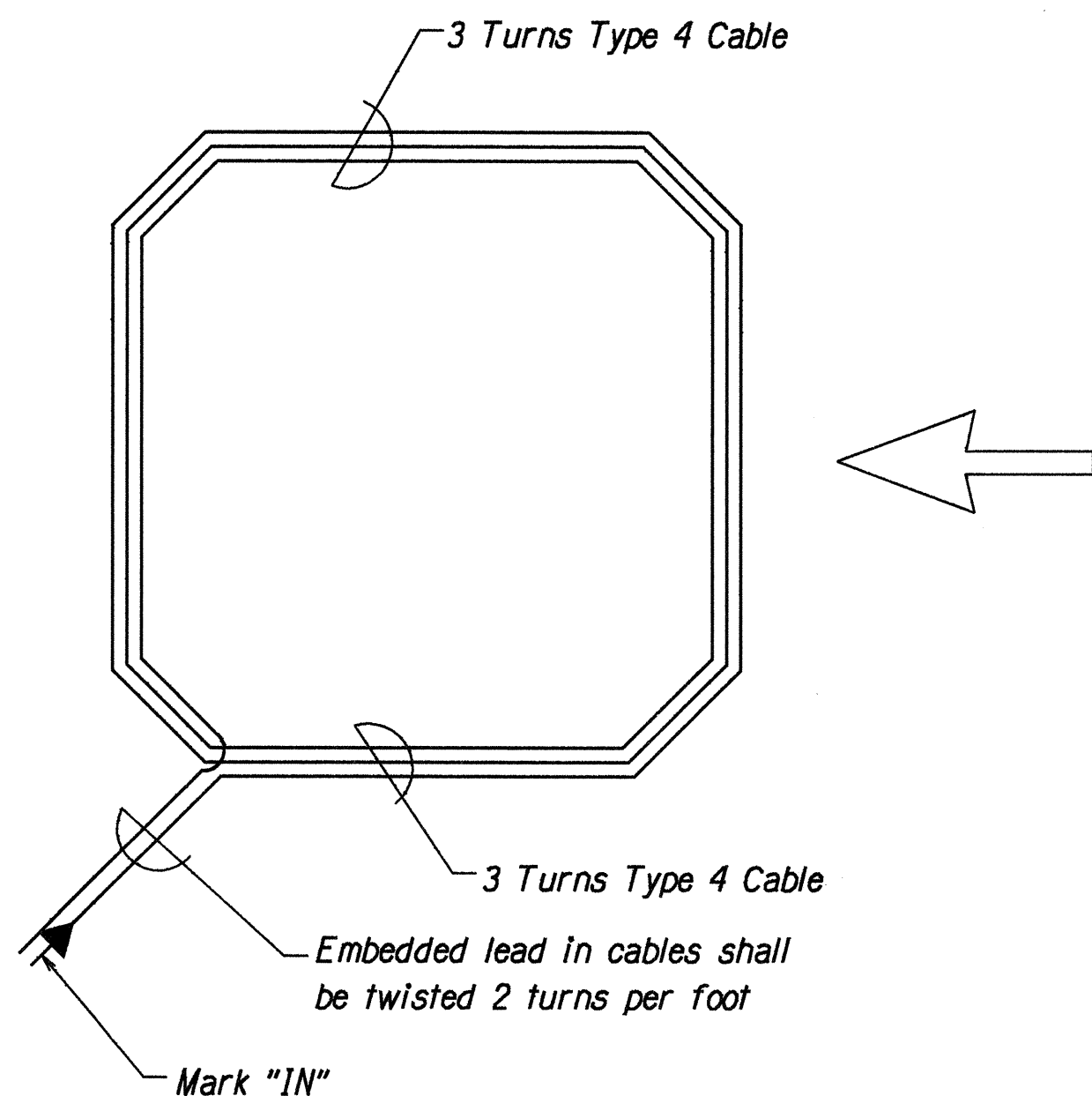
TYPICAL SECTION THROUGH SENSOR LOOP



NOTES ON CONSTRUCTION AT END OF SAWCUT

1. Seal roadway end of conduit after installation of conductors.
2. Install bulkhead across conduit trench.
3. Place hot tar in sawcut.
4. Backfill over conduit with new A.C.
5. Reconstruct curb and gutter as required.

DETAIL OF SENSOR LOOP INSTALLATION AT EDGE OF ROADWAY



TYPICAL SENSOR LOOP WIRING DIAGRAM

STATE OF HAWAII
DEPARTMENT OF TRANSPORTATION
HIGHWAYS DIVISION

LOOP DETECTOR DETAILS

INTERSTATE ROUTE H-1 RESURFACING
On Ramps at 5th and 11th Avenues and
Off Ramps at 6th and Kokohead Avenues
F.A.I. Project No. NH-HI-1(236)
Not to Scale Date: Feb., 1999
SHEET No. T13 OF 13 SHEETS