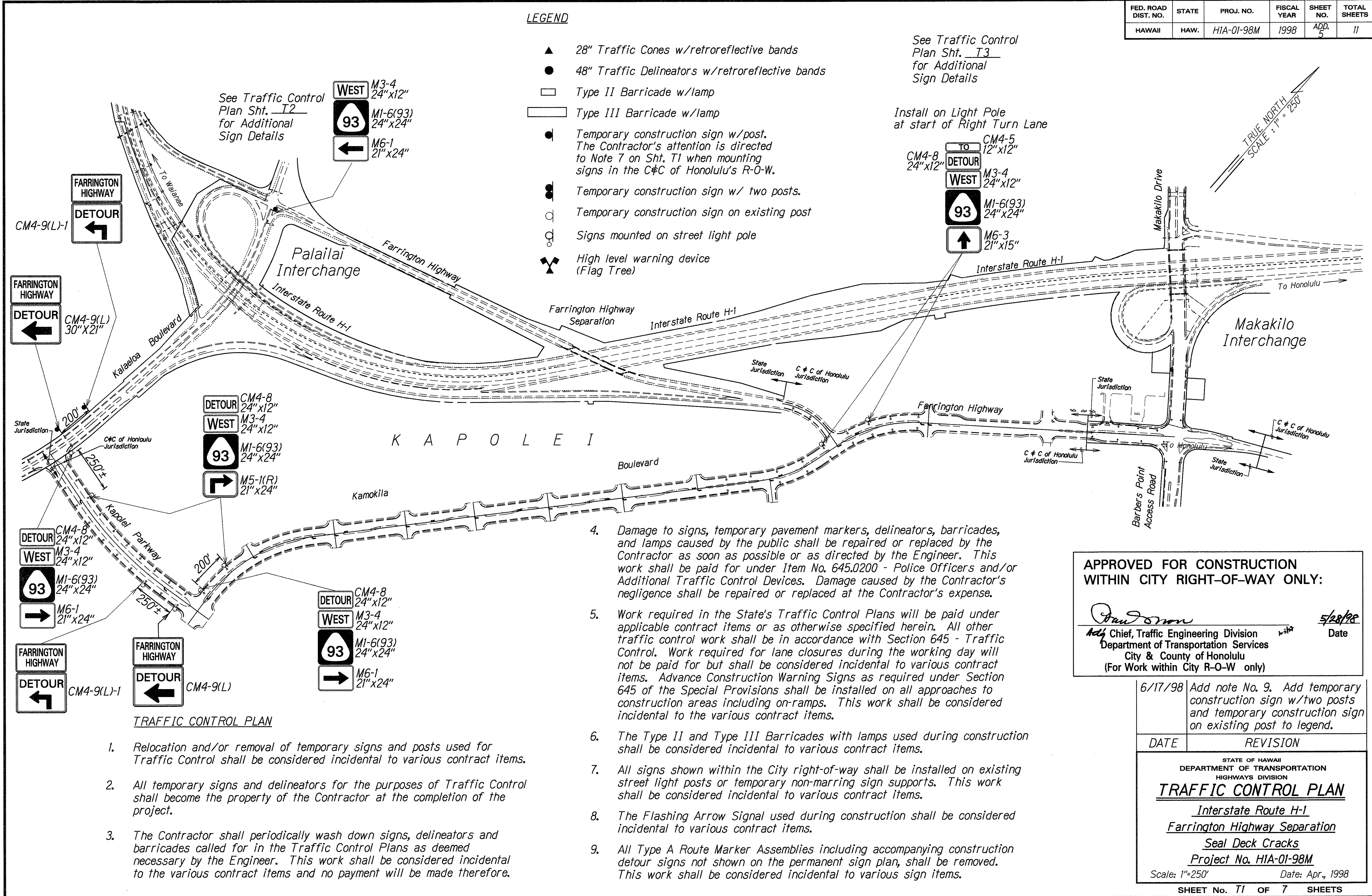


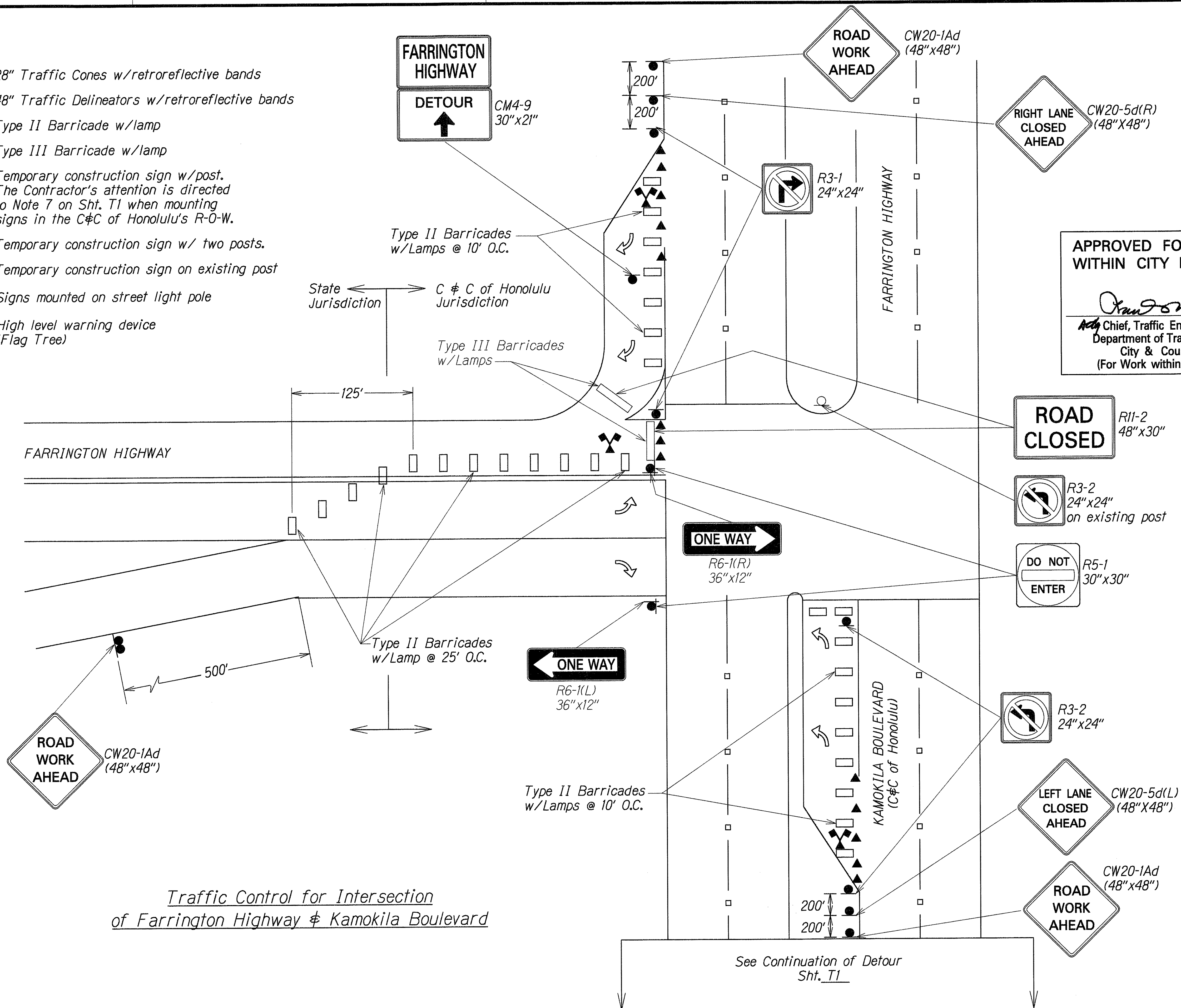
FED. ROAD DIST. NO.	STATE	PROJ. NO.	FISCAL YEAR	SHEET NO.	TOTAL SHEETS
HAWAII	HAW.	HIA-01-98M	1998	ADD. 5	11



FED. ROAD DIST. NO.	STATE	PROJ. NO.	FISCAL YEAR	SHEET NO.	TOTAL SHEETS
HAWAII	HAW.	HIA-01-98M	1998	ADD. 7	11

LEGEND

- ▲ 28" Traffic Cones w/retroreflective bands
- 48" Traffic Delineators w/retroreflective bands
- Type II Barricade w/lamp
- ▤ Type III Barricade w/lamp
- Temporary construction sign w/post. The Contractor's attention is directed to Note 7 on Sht. T1 when mounting signs in the C&C of Honolulu's R-O-W.
- Temporary construction sign w/ two posts.
- Temporary construction sign on existing post
- Signs mounted on street light pole
- ▲ High level warning device (Flag Tree)



Traffic Control for Intersection of Farrington Highway & Kamokila Boulevard

ORIGINAL PLAN	DATE
SURVEY PLOTTED BY	
DRAWN BY	
NOTED BY	
DESIGNED BY	
CHECKED BY	
DATE	

6/17/98	Add temporary construction sign w/ two posts and temporary construction sign on existing post to legend.
DATE	REVISION
STATE OF HAWAII DEPARTMENT OF TRANSPORTATION HIGHWAYS DIVISION TRAFFIC CONTROL PLAN Interstate Route H-1 Farrington Highway Separation Seal Deck Cracks Project No. HIA-01-98M Not to Scale Date: Apr., 1998 SHEET No. T3 OF 7 SHEETS	