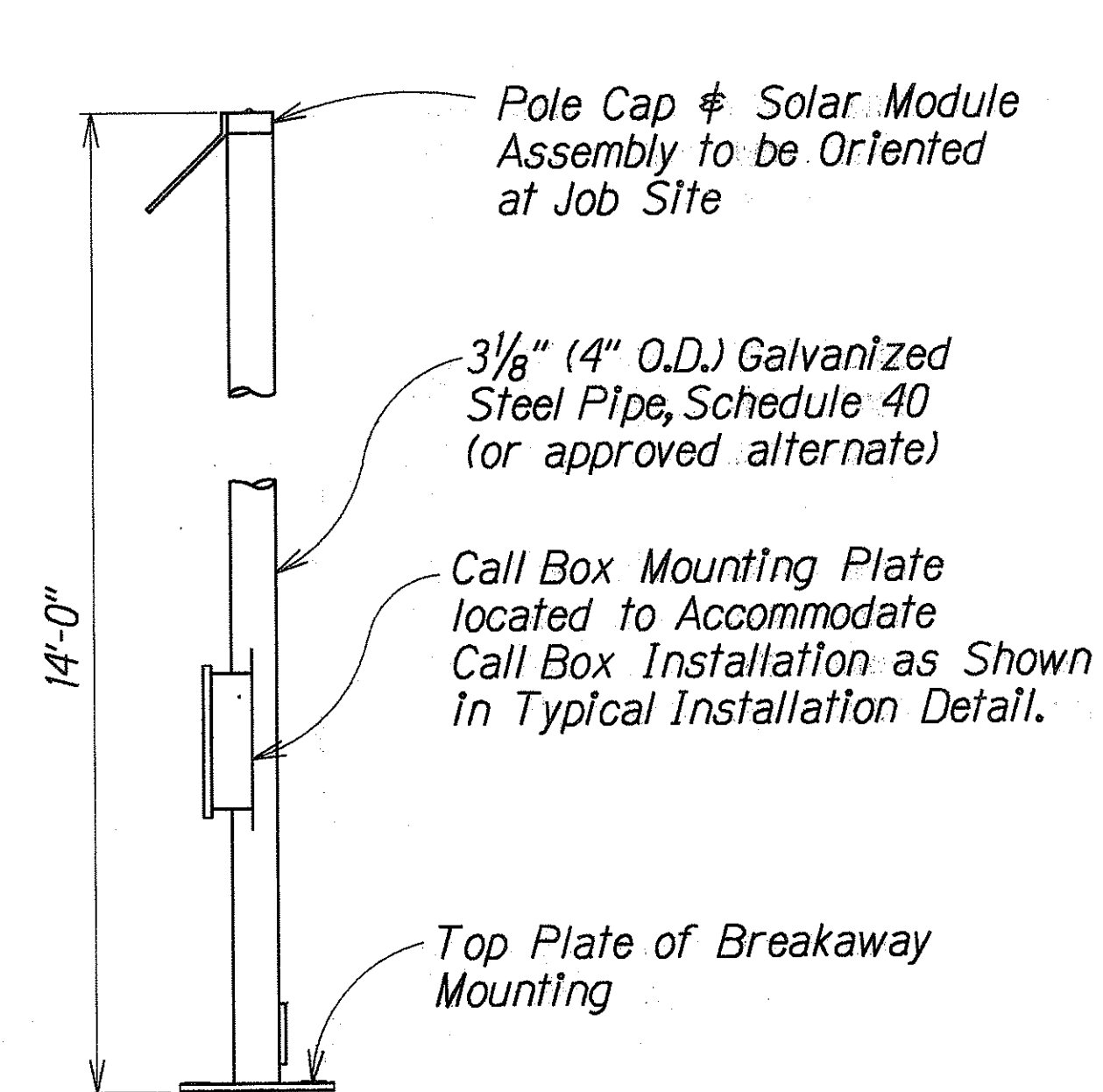
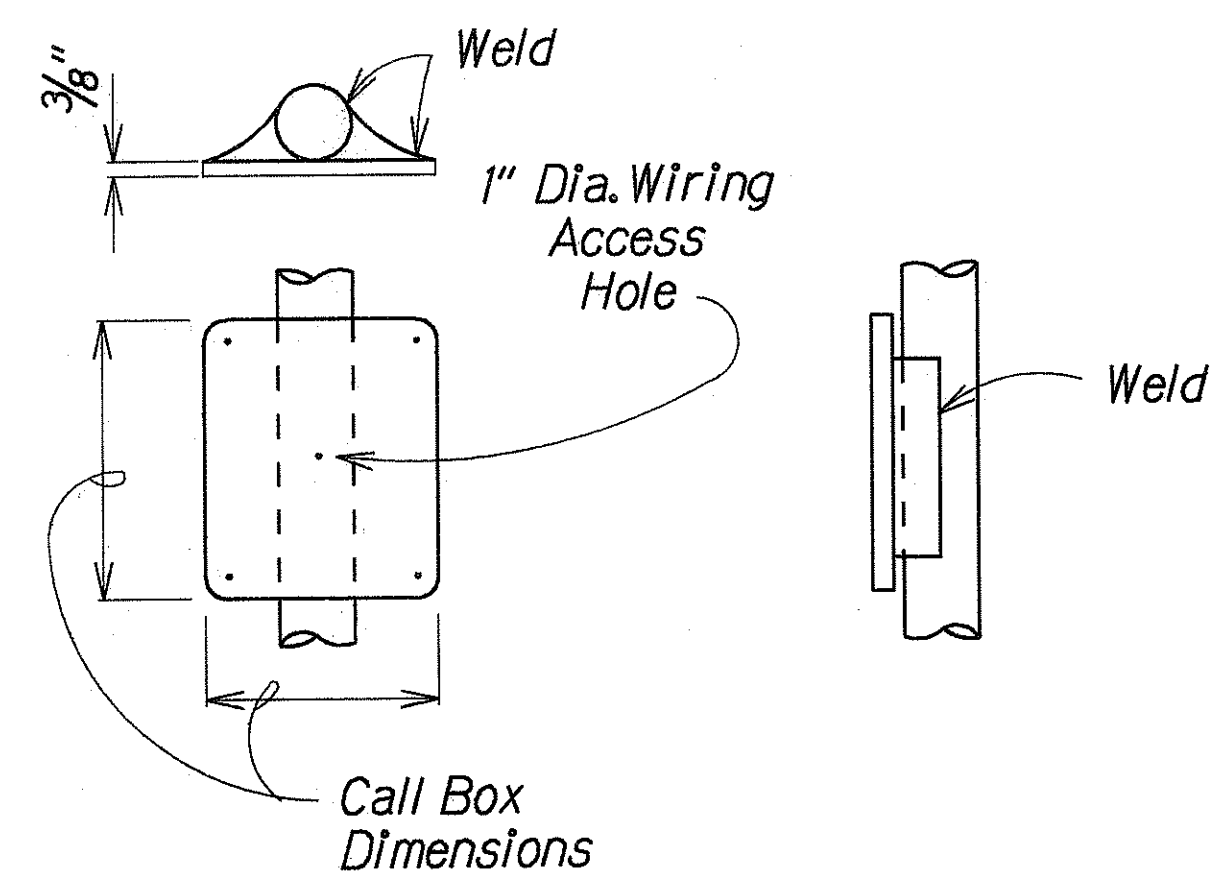


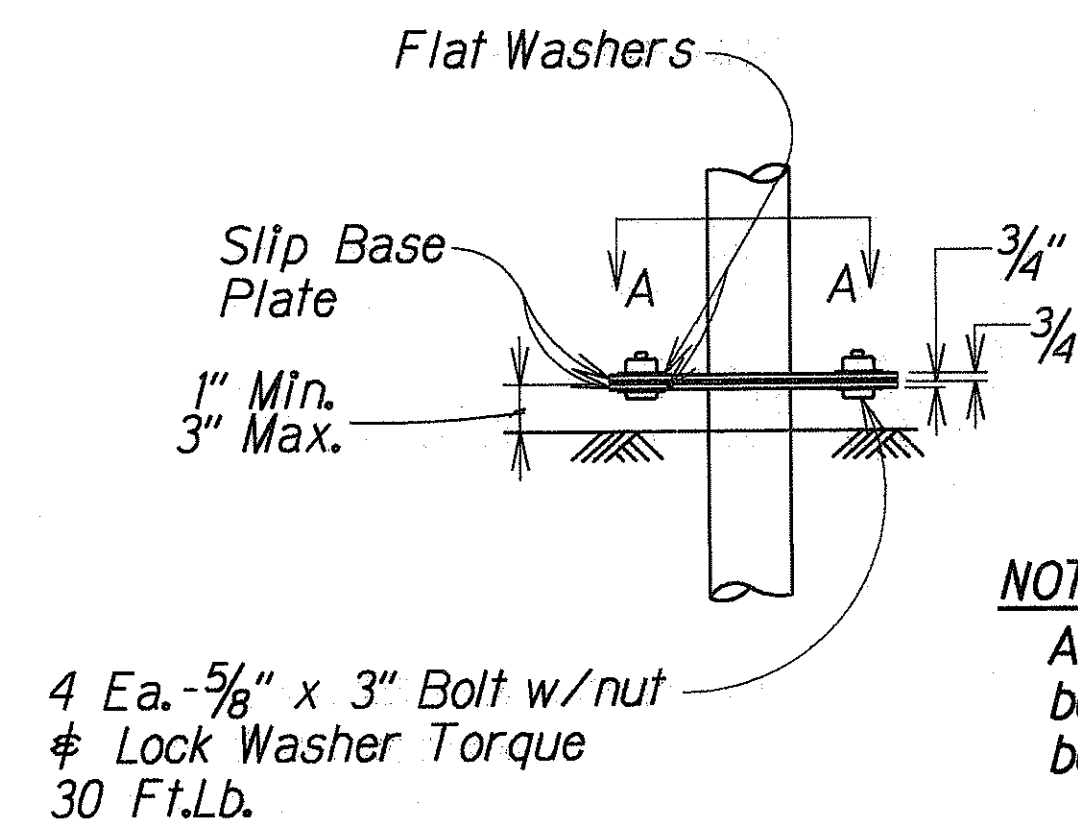
FED. ROAD DIST. NO.	STATE	PROJ. NO.	FISCAL YEAR	SHEET NO.	TOTAL SHEETS
HAWAII	HAW.	HWY-0-05-96	1996	5	5



CALL BOX MOUNTING POLE

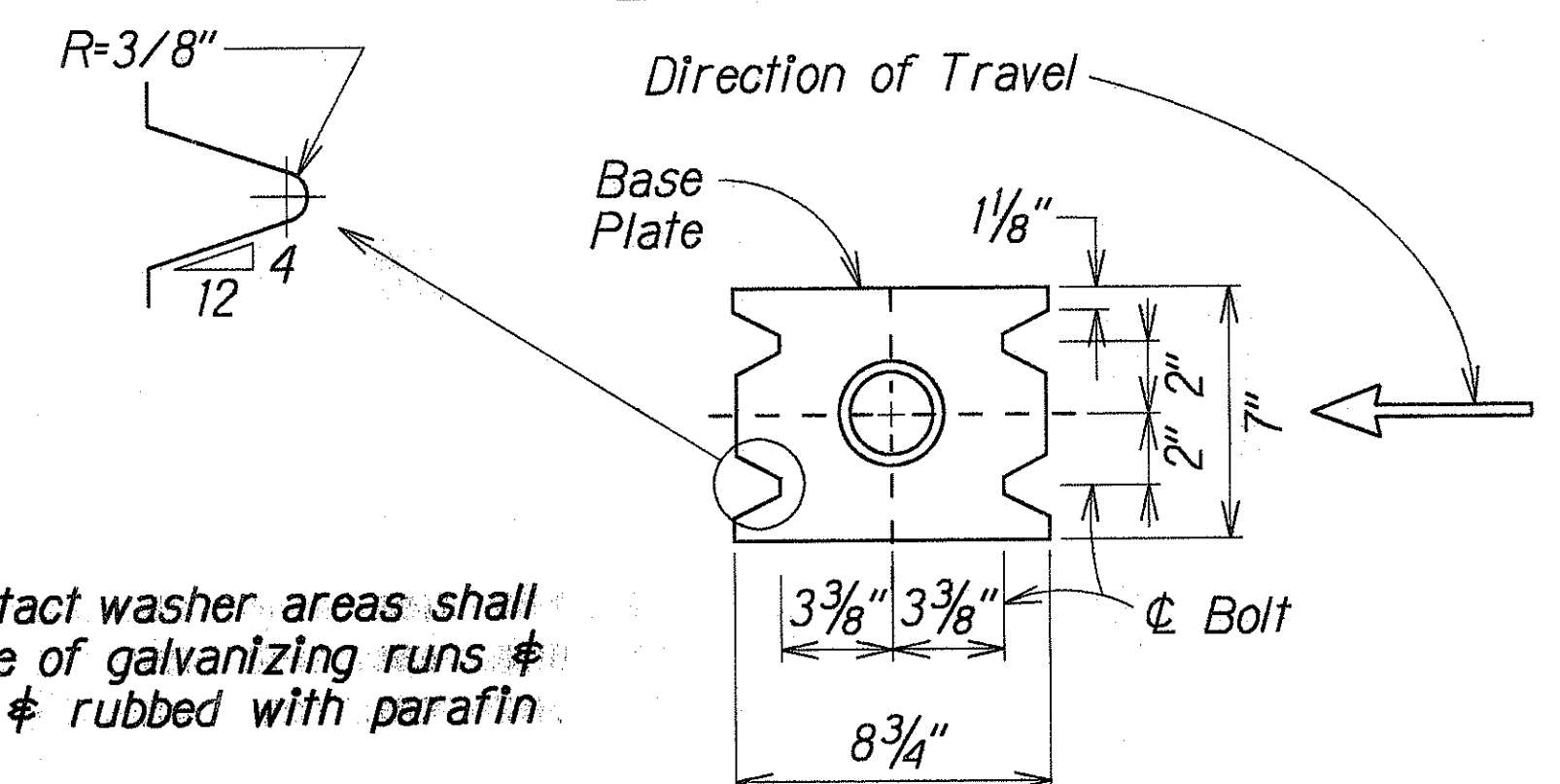


CALL BOX MOUNTING



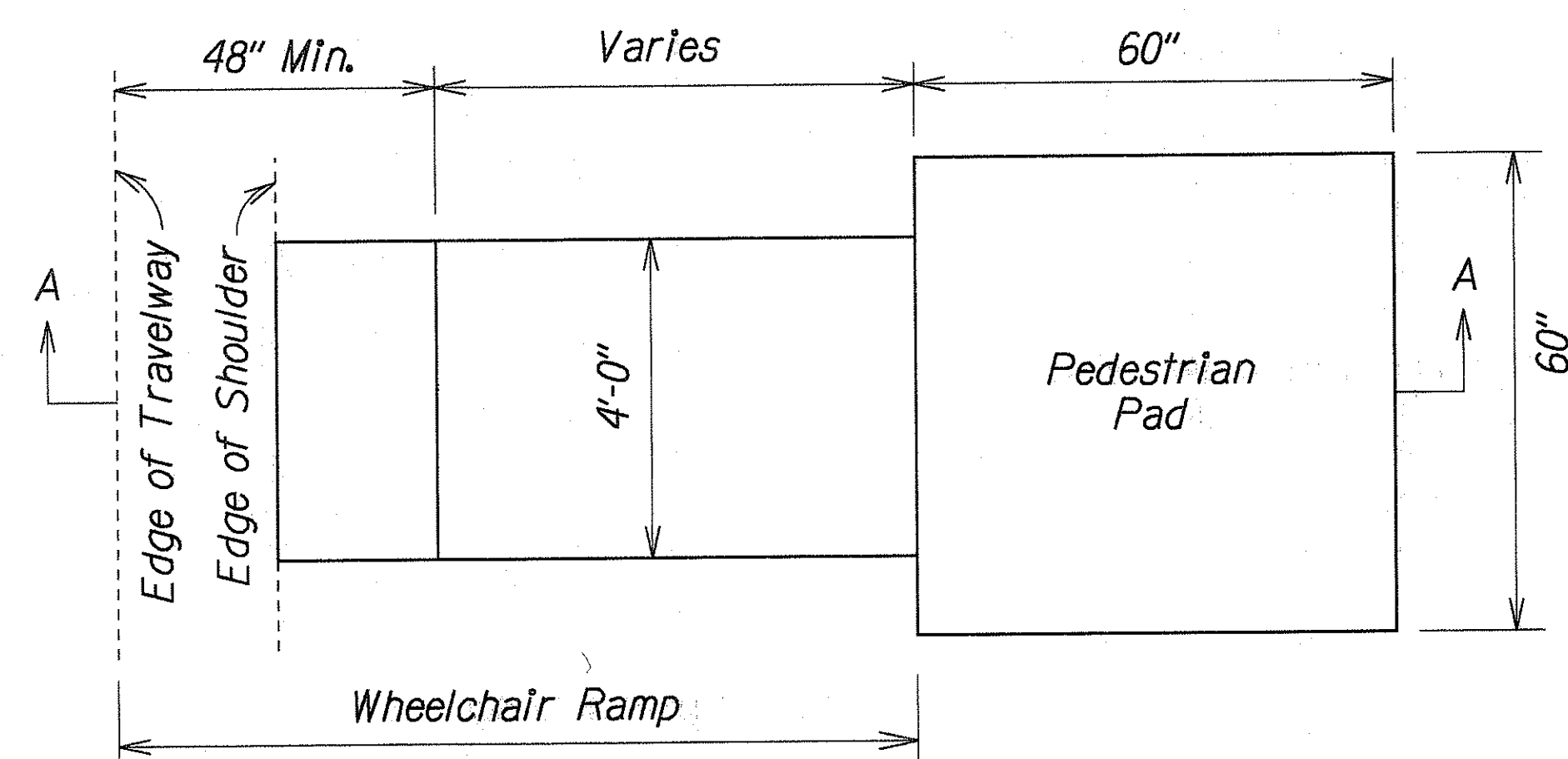
ELEVATION

NOTE:
All contact washer areas shall be free of galvanizing runs & beads & rubbed with paraffin.

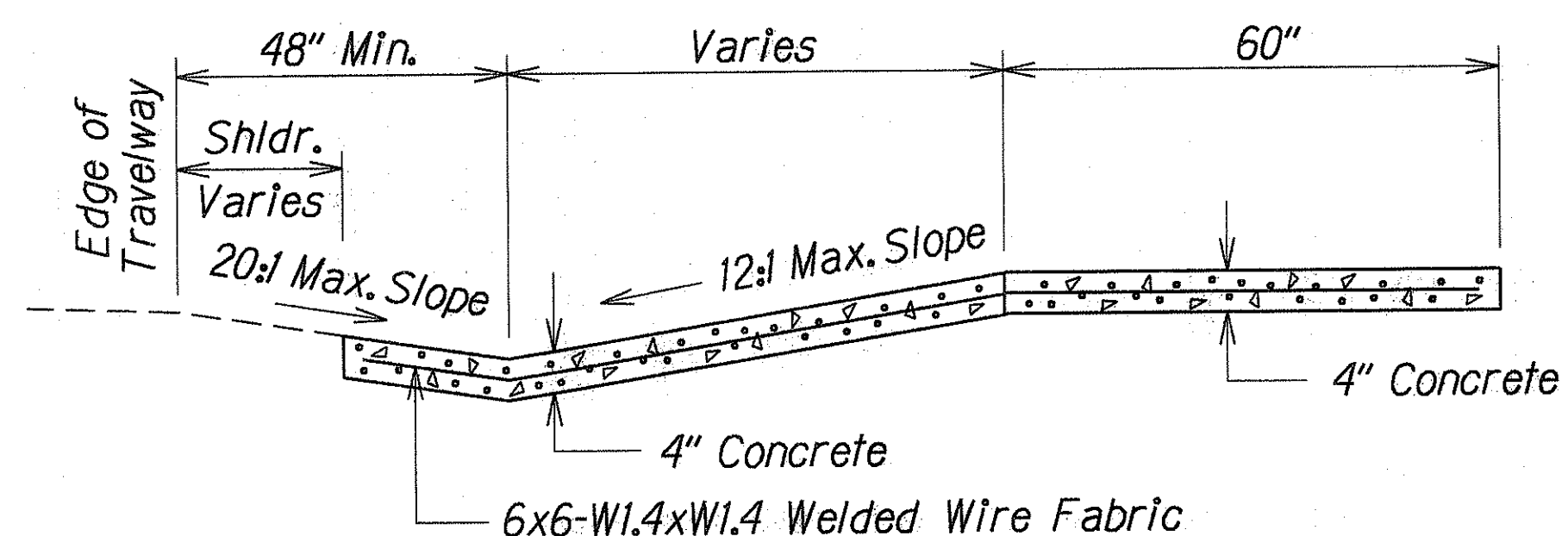


SECTION "A-A"

BREAKAWAY MOUNTING

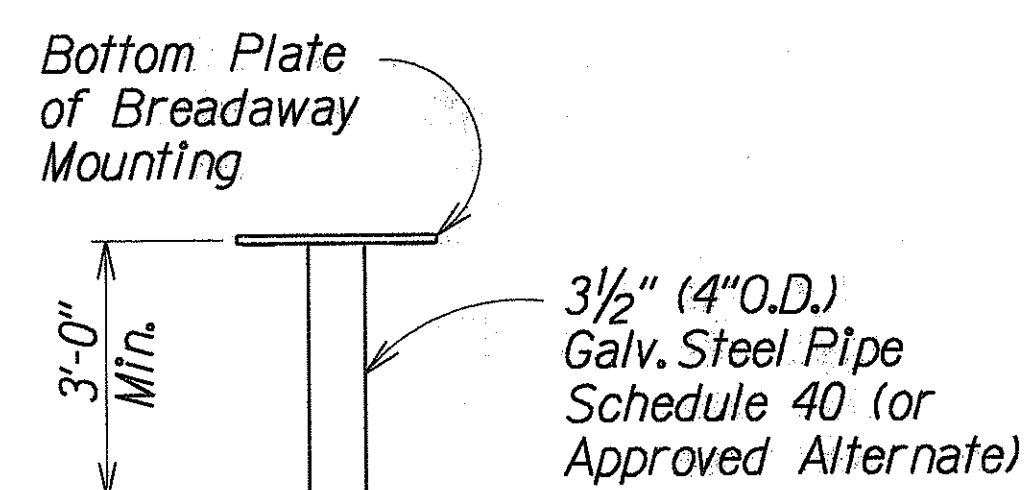


PLAN

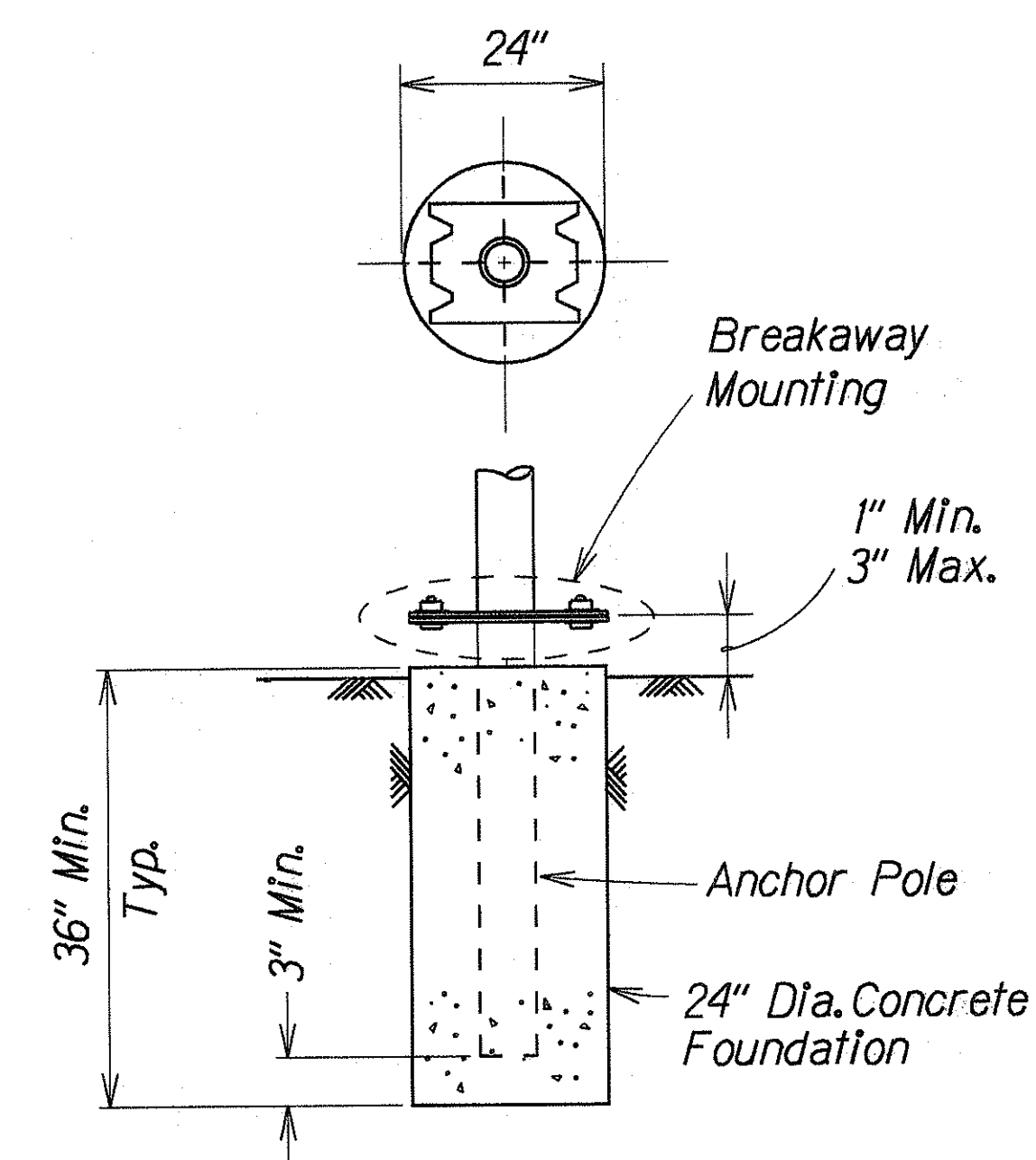


SECTION "A-A"

CONCRETE PEDESTIAN PAD WITH WHEELCHAIR RAMP



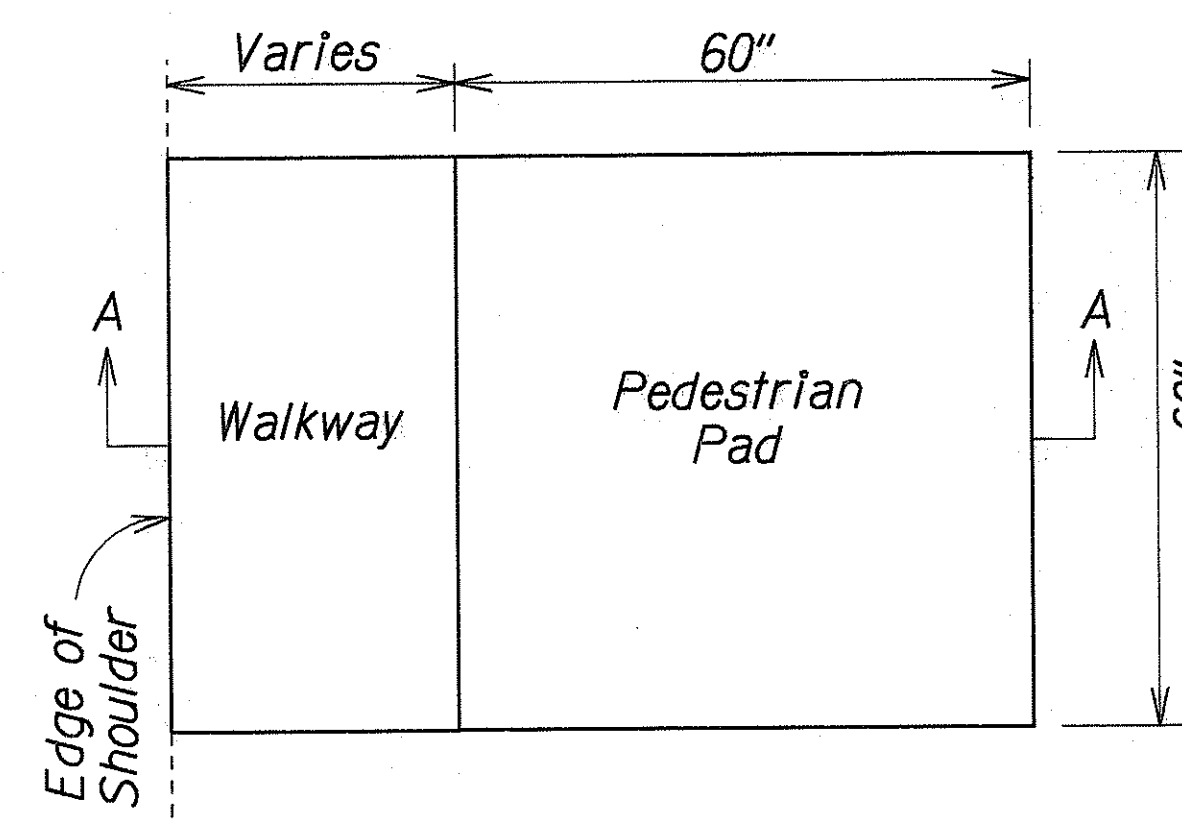
ANCHOR POLE



NOTES:

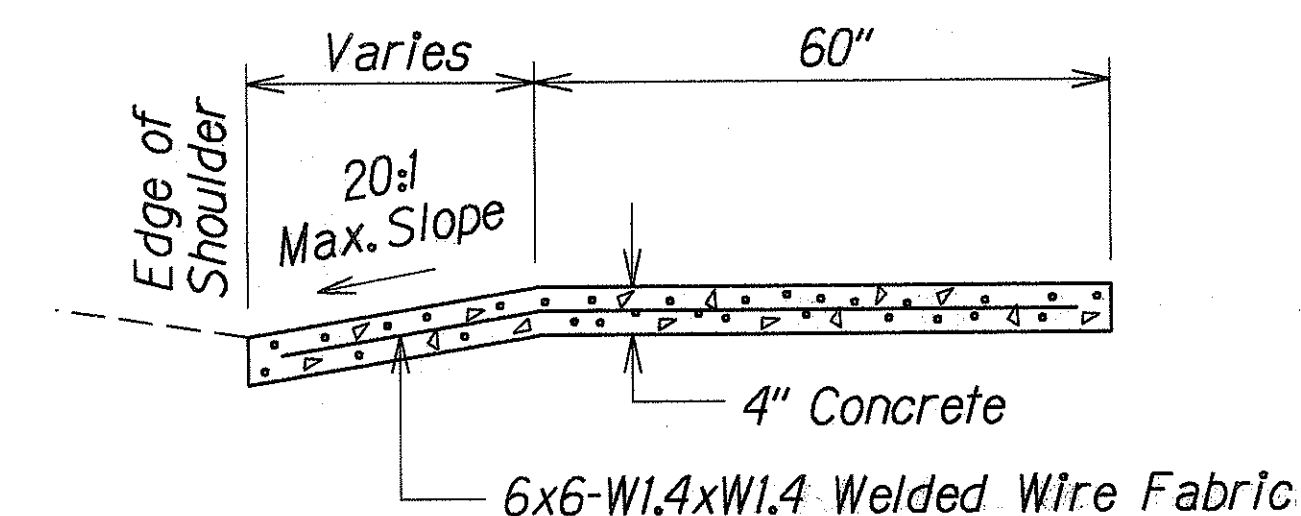
1. Foundation shall be Class B placed against undisturbed material.
2. Backfill shall be complete and adjacent surface improvements prepared prior to erection of the post.
3. 1/2-inch expansion joint material shall be placed between the foundation and abutting concrete paving.
4. CIDH = CAST IN DRILLED HOLE

CIDH CONCRETE FOUNDATION WITH BREAKAWAY MOUNTING



PLAN

CONCRETE PEDESTIAN PAD WITH WALKWAY



SECTION "A-A"

STATE OF HAWAII
DEPARTMENT OF TRANSPORTATION
HIGHWAYS DIVISION

MISCELLANEOUS DETAILS

EMERGENCY TELEPHONES
INTERSTATE ROUTE H-1
Airport Interchange to 17th Avenue
Project No. HWY-0-05-96

Scale: Not to Scale Date: February, 1996

SHEET No. 1 OF 1 SHEETS

SURVEY PLOTTED BY	DATE
DRAWN BY	
TRACED BY	
NOTE BOOK	
QUANTITIES BY	
CHECKED BY	
No.	