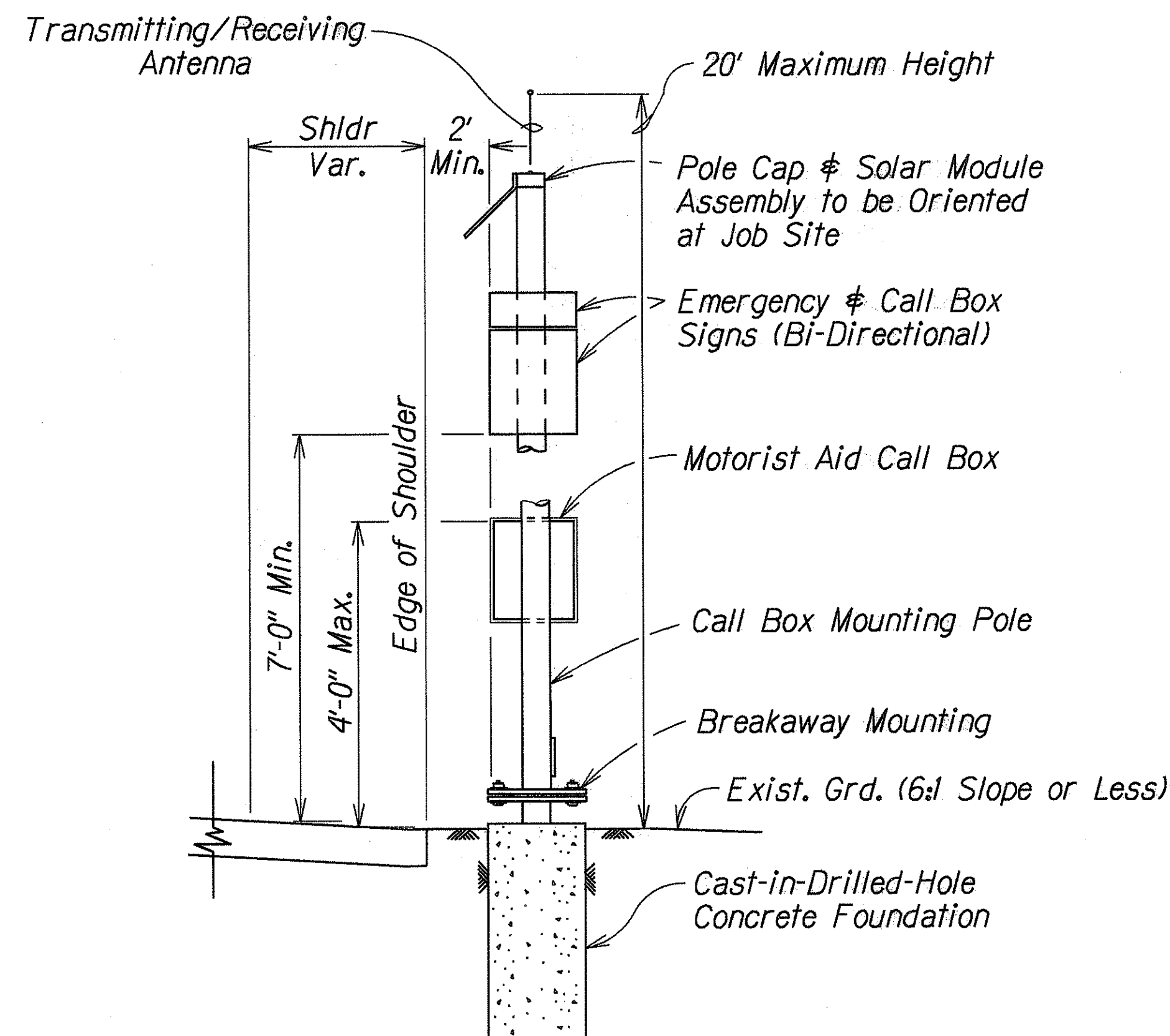


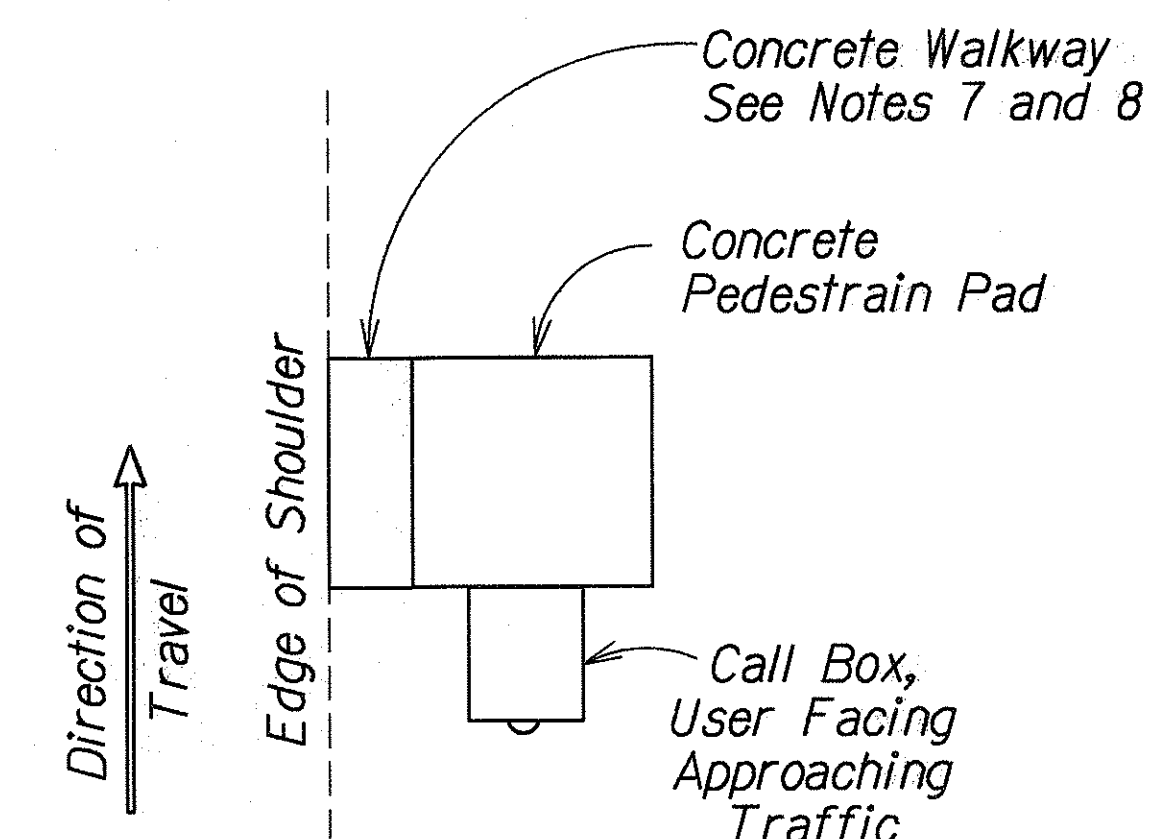
FED. ROAD DIST. NO.	STATE	PROJ. NO.	FISCAL YEAR	SHEET NO.	TOTAL SHEETS
HAWAII	HAW.	HWY-0-05-96	1996	3	5

## GENERAL NOTES

1. Scope of work for this project involves installation of emergency telephones on mounting poles for Interstate Route H-1, Airport Interchange to 17th Avenue.
2. The Contractor is reminded of the requirements of Subsection 108.01 - Subletting of Contract, which requires him to perform work amounting to not less than 50 percent of the total contract cost less deductible items. Non-compliance with this Subsection may be grounds for rejection of bid.
3. The Contractor's attention is directed to the following Sections of the Special Provisions: Subsection 107.13 - Public Convenience and Safety, Subsection 107.21 - Contractor's Responsibility for Utility Property and Services, Section 645 - Traffic Control.
4. At the end of each day's work, the Contractor shall remove all equipment and other obstructions to permit free and safe passage of public traffic.
5. The exact locations of Emergency Call Box units shall be determined in the field by the Engineer.
6. Existing structures and utilities damaged by the Contractor shall be repaired by the Contractor at his expense.
7. Concrete walkway from pedestrian pad to edge of pavement shall not exceed a maximum slope of 20:1. See Plan Sheet No. 5 for detail.
8. If concrete walkway from pedestrian pad to edge of pavement exceeds the maximum slope of 20:1, a concrete wheelchair ramp shall be constructed. See Plan Sheet No. 5 for detail.

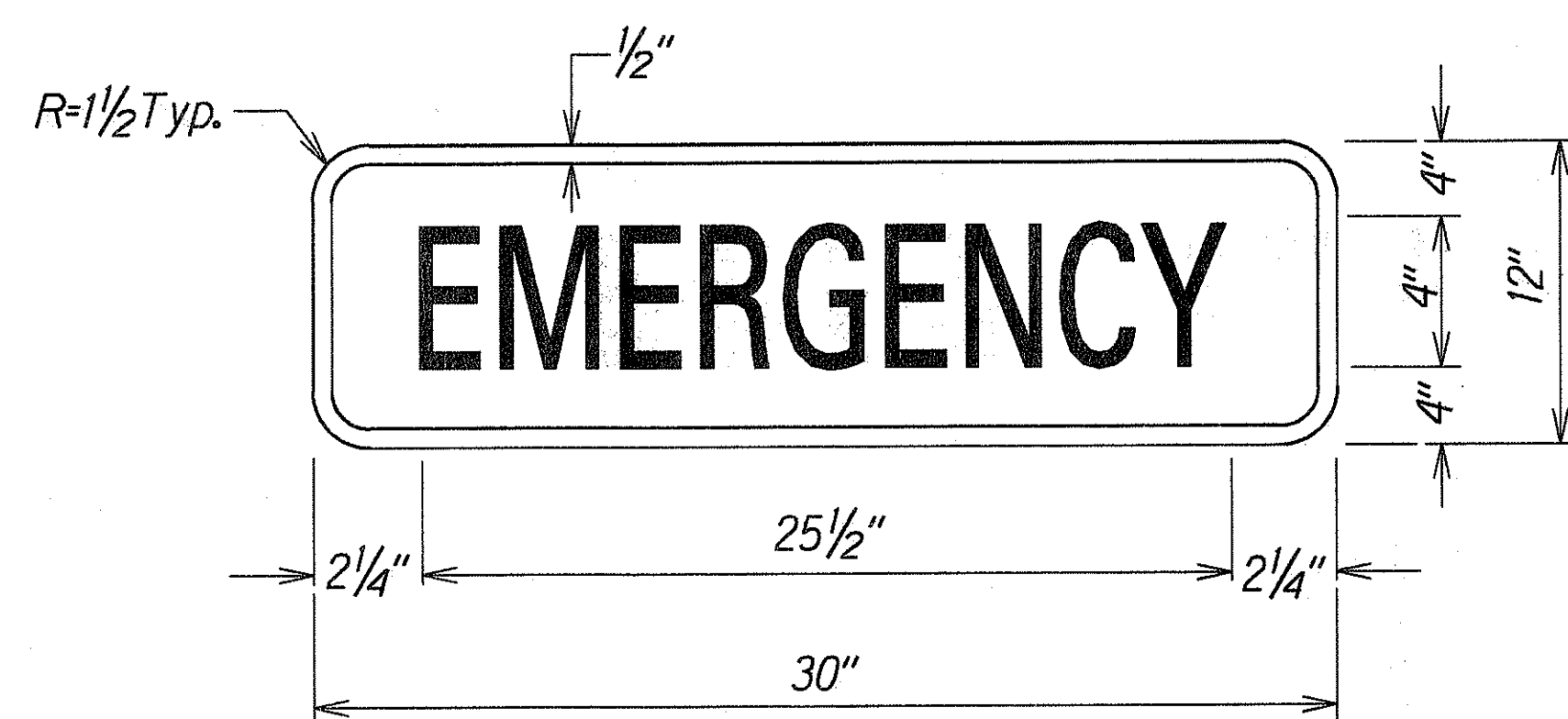


SIDE VIEW



TOP VIEW

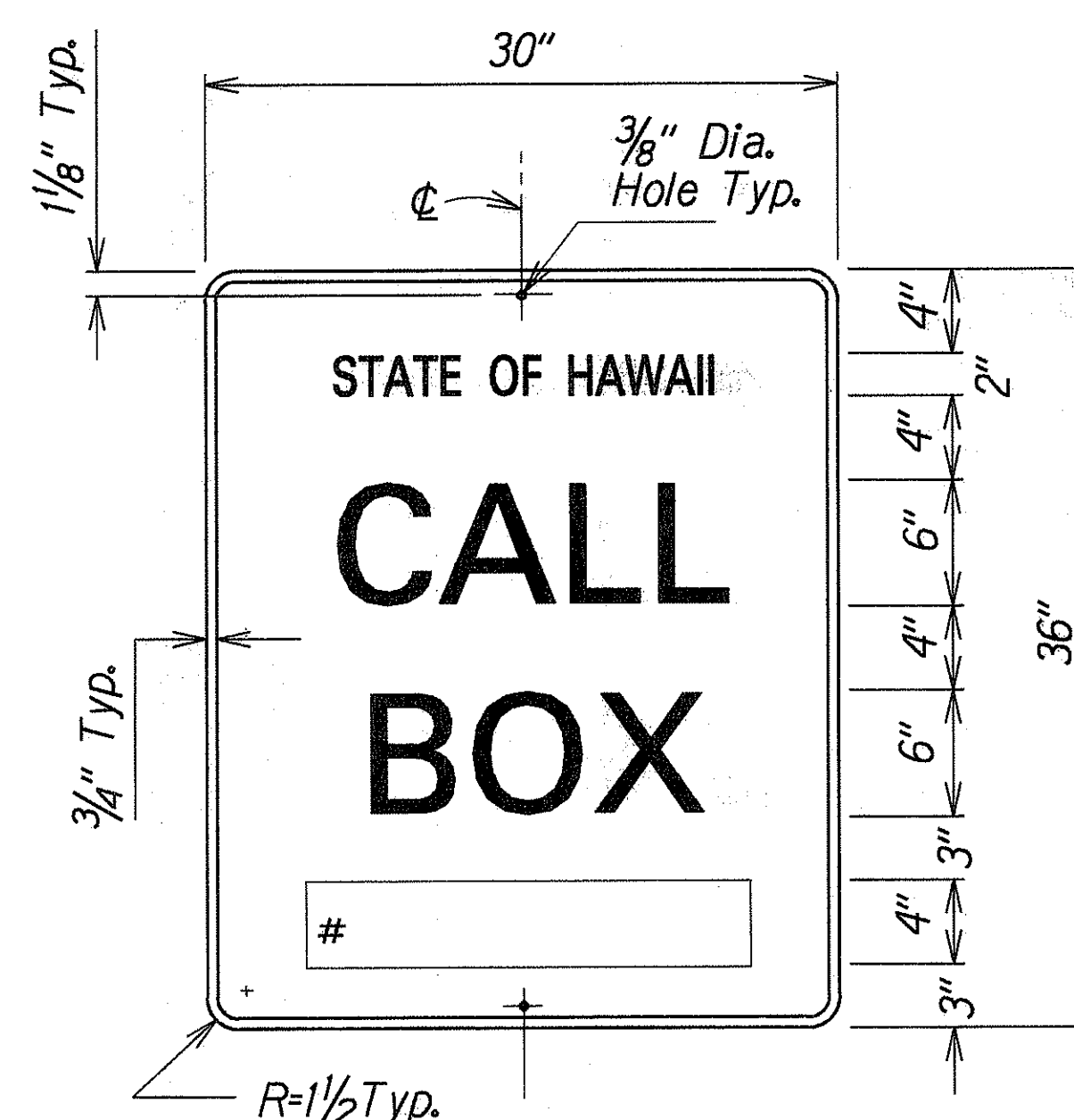
## TYPICAL INSTALLATION



### NOTES:

1. Lettering shall be centered and shall be 4" SERIES C letters.
2. All signs shall have white reflectorized border and legend on a blue reflectorized background.

EMERGENCY SIGN



CALL BOX IDENTIFICATION SIGN

### NOTES:

1. All lines of lettering shall be centered and shall be the following lettering size and series:  
Line No. 1 - 2" SERIES C  
Line No. 2 - 6" SERIES E  
Line No. 3 - 6" SERIES E
2. Call Box Identification Numbers shall be 4" SERIES D letters centered in the bottom position of the sign.
3. All signs shall have white reflectorized border and legend on a blue reflectorized background.
4. Modify hole locations to accommodate the 2" offset from edge of shoulder.

STATE OF HAWAII  
DEPARTMENT OF TRANSPORTATION  
HIGHWAYS DIVISION

**GENERAL NOTES, TYPICAL  
INSTALLATION & SIGN DETAILS**

EMERGENCY TELEPHONES  
INTERSTATE ROUTE H-1  
Airport Interchange to 17th Avenue  
Project No. HWY-0-05-96

Scale: Not to Scale Date: February, 1996

SHEET No. 1 OF 1 SHEETS