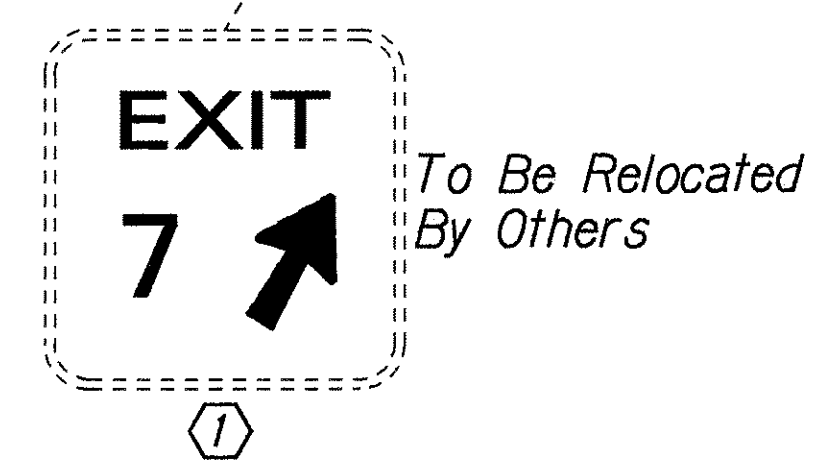
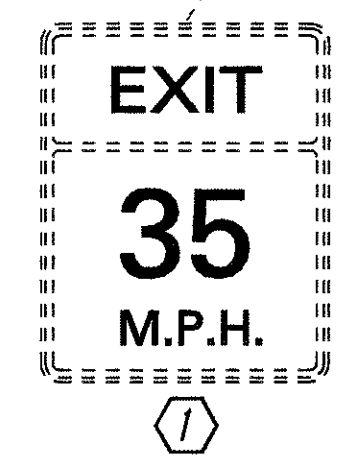
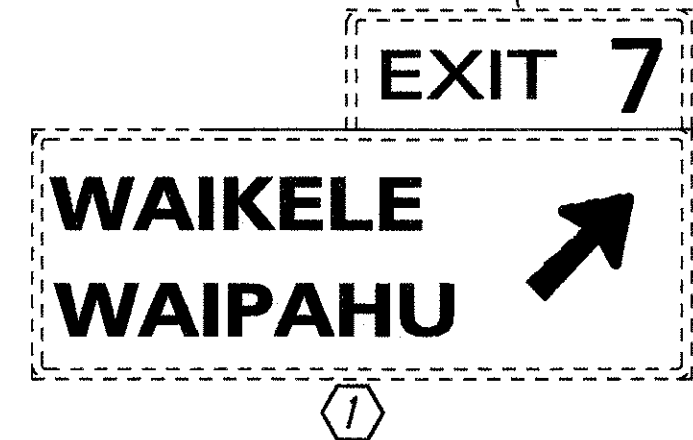
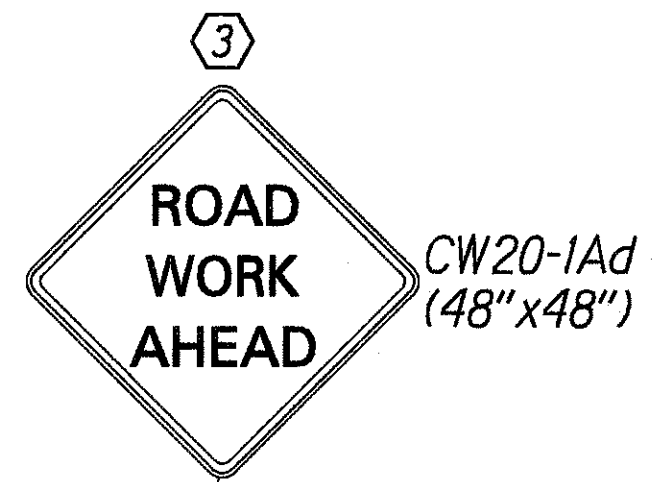
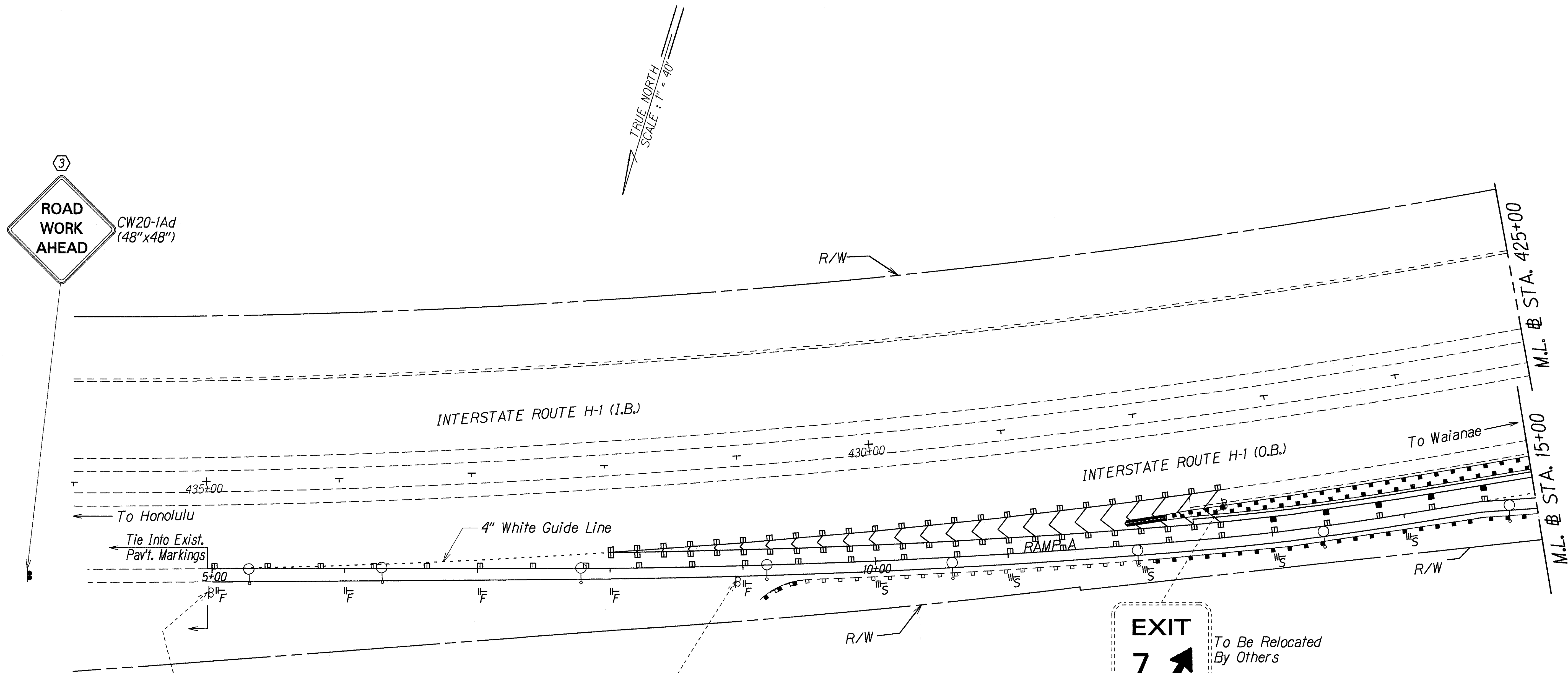


FED. ROAD DIST. NO.	STATE	PROJ. NO.	FISCAL YEAR	SHEET NO.	TOTAL SHEETS
HAWAII	HAW.	HIC-02-98M	1998	9	13



RAMP A @ STA. 5+00 TO 9+00 RT.
 Install RM-2 Reflector Markers
 w/Flexible Delineator Post, Type
 B. Installation at 100' O.C. (5 Each)

RAMP A @ STA. 10+00 TO 16+00 RT.
 Install RM-3 Reflector Markers
 w/Steel Post at 100' O.C. (7 Each)

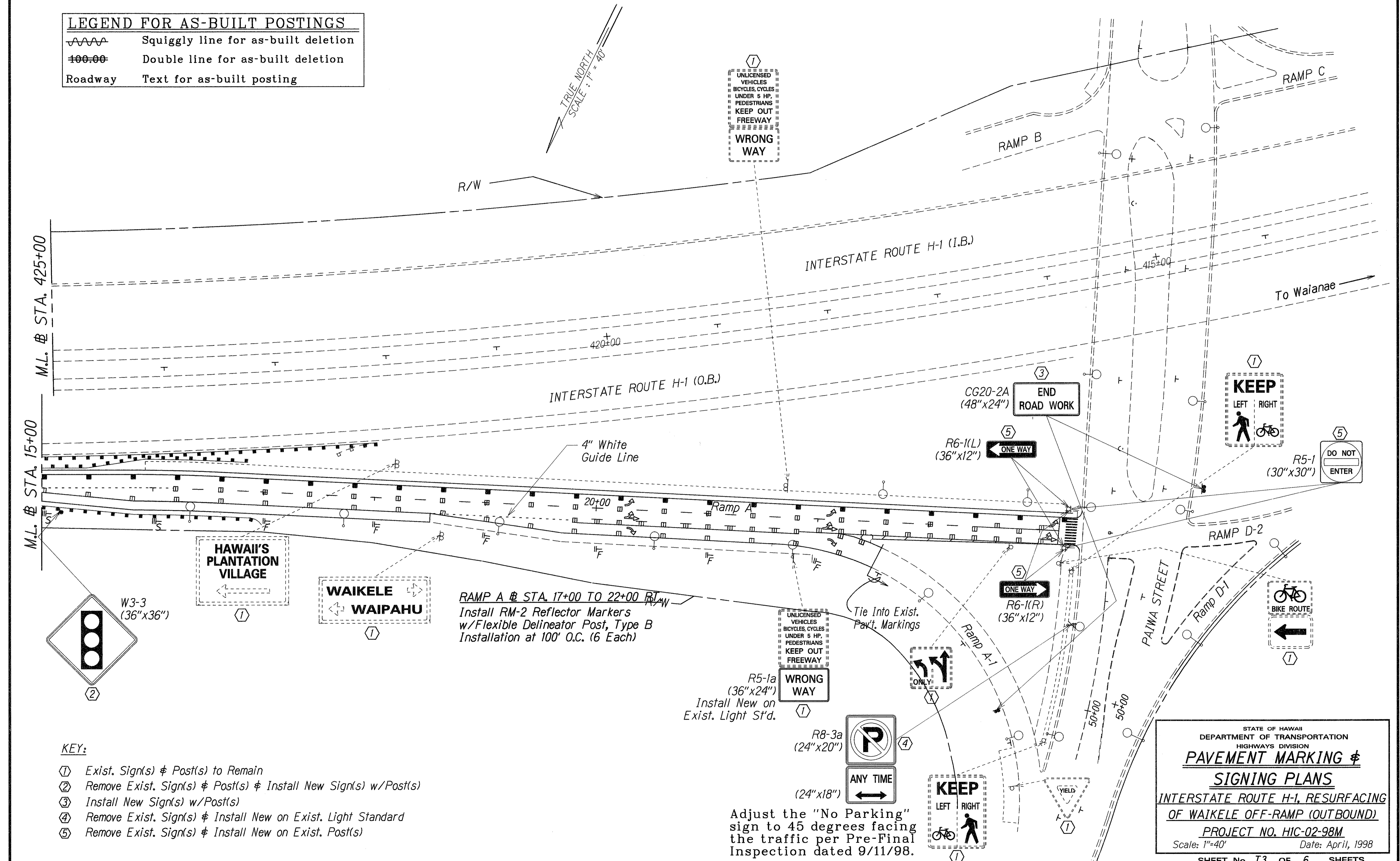
- KEY:**
- ① Exist. Sign(s) & Post(s) to Remain
 - ② Remove Exist. Sign(s) & Post(s) & Install New Sign(s) w/Post(s)
 - ③ Install New Sign(s) w/Post(s)
 - ④ Remove Exist. Sign(s) & Install New on Exist. Light Standard
 - ⑤ Remove Exist. Sign(s) & Install New on Exist. Post(s)

DESIGNED BY	DATE
TRACED BY	
DESIGNED BY	
QUANTITIES BY	
CHECKED BY	

STATE OF HAWAII
 DEPARTMENT OF TRANSPORTATION
 HIGHWAYS DIVISION
**PAVEMENT MARKING &
 SIGNING PLAN**
 INTERSTATE ROUTE H-1, RESURFACING
 OF WAIKELE OFF-RAMP (OUTBOUND)
 PROJECT NO. HIC-02-98M
 Scale: 1"=40' Date: Apr., 1998
 SHEET No. T2 OF 6 SHEETS

FED. ROAD DIST. NO.	STATE	PROJ. NO.	FISCAL YEAR	SHEET NO.	TOTAL SHEETS
HAWAII	HAW.	HIC-02-98M	1998	10	13

LEGEND FOR AS-BUILT POSTINGS	
	Squiggly line for as-built deletion
	Double line for as-built deletion
Roadway	Text for as-built posting



SURVEY PLOTTED BY	DATE
DRAWN BY	
TRACED BY	
QUANTITIES BY	
CHECKED BY	
ORIGINAL PLAN	
NOTE BOOK	
TOLWAY	
NO. PH/HP2	

- KEY:**
- ① Exist. Sign(s) & Post(s) to Remain
 - ② Remove Exist. Sign(s) & Post(s) & Install New Sign(s) w/Post(s)
 - ③ Install New Sign(s) w/Post(s)
 - ④ Remove Exist. Sign(s) & Install New on Exist. Light Standard
 - ⑤ Remove Exist. Sign(s) & Install New on Exist. Post(s)

Adjust the "No Parking" sign to 45 degrees facing the traffic per Pre-Final Inspection dated 9/11/98.

STATE OF HAWAII
DEPARTMENT OF TRANSPORTATION
HIGHWAYS DIVISION

PAVEMENT MARKING & SIGNING PLANS

INTERSTATE ROUTE H-1, RESURFACING OF WAIKELE OFF-RAMP (OUTBOUND)

PROJECT NO. HIC-02-98M
Scale: 1"=40' Date: April, 1998

SHEET No. T3 OF 6 SHEETS