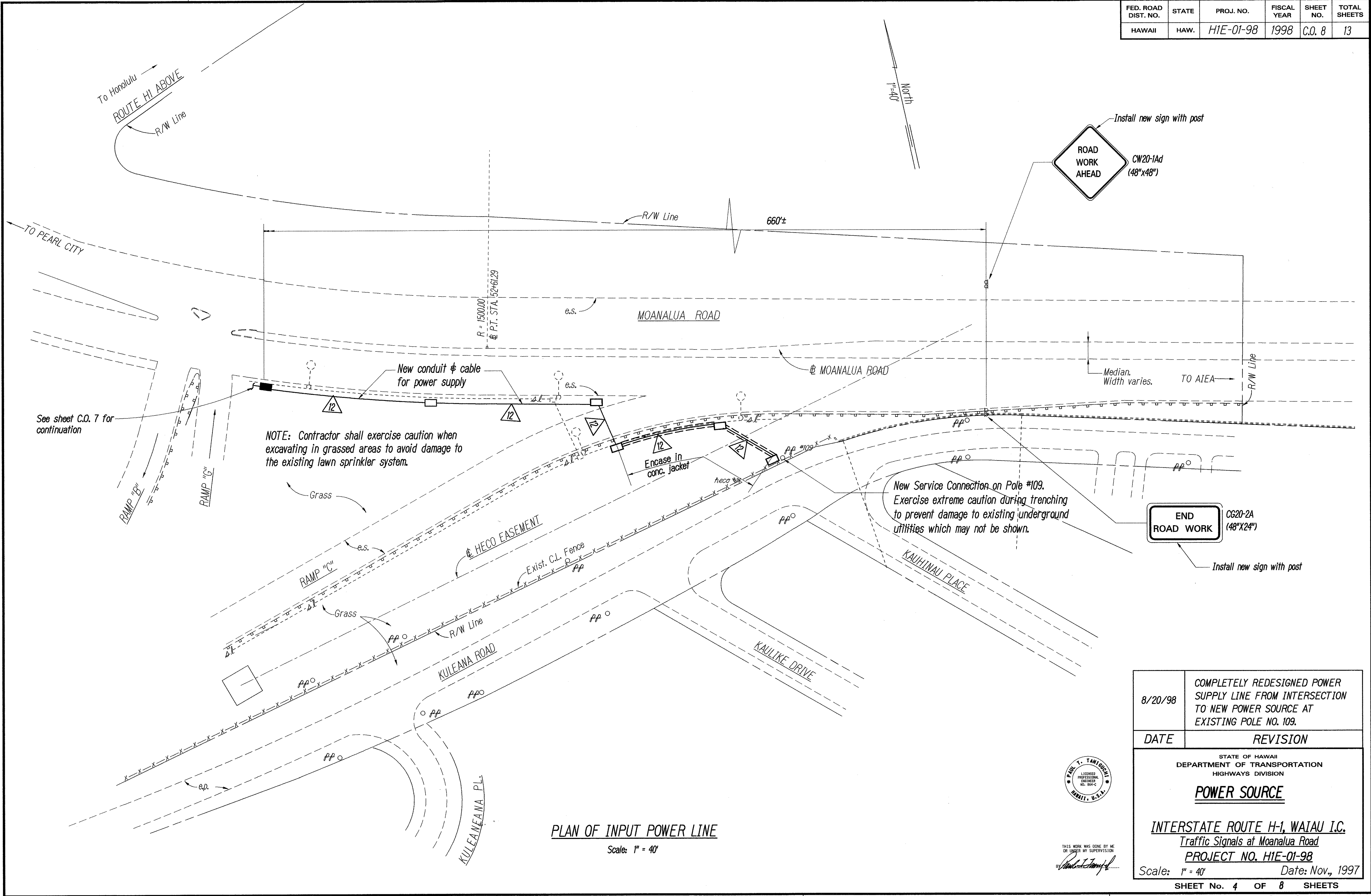


FED. ROAD DIST. NO.	STATE	PROJ. NO.	FISCAL YEAR	SHEET NO.	TOTAL SHEETS
HAWAII	HAW.	H1E-01-98	1998	C.O. 8	13



SURVEY PLOTTED BY	DATE
DRAWN BY	
DESIGNED BY	
QUANTITIES BY	
CHECKED BY	
ORIGINAL PLAN	
NOTE BOOK	

8/20/98	COMPLETELY REDESIGNED POWER SUPPLY LINE FROM INTERSECTION TO NEW POWER SOURCE AT EXISTING POLE NO. 109.
DATE	REVISION
STATE OF HAWAII DEPARTMENT OF TRANSPORTATION HIGHWAYS DIVISION POWER SOURCE INTERSTATE ROUTE H-1, WAI'AU I.C. Traffic Signals at Moanalua Road PROJECT NO. H1E-01-98 Scale: 1" = 40' Date: Nov., 1997	
SHEET No. 4 OF 8 SHEETS	