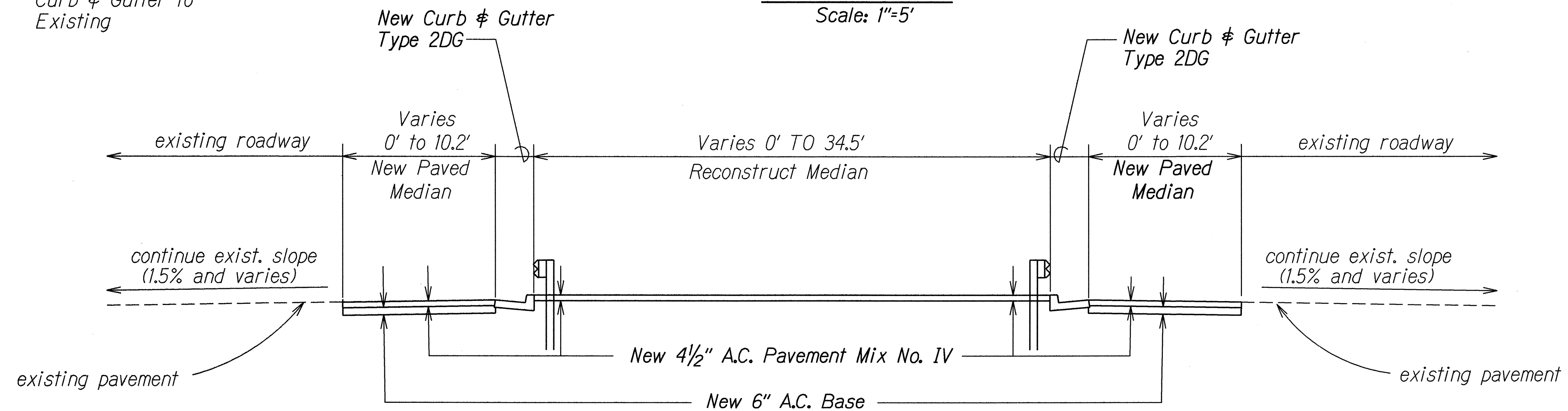
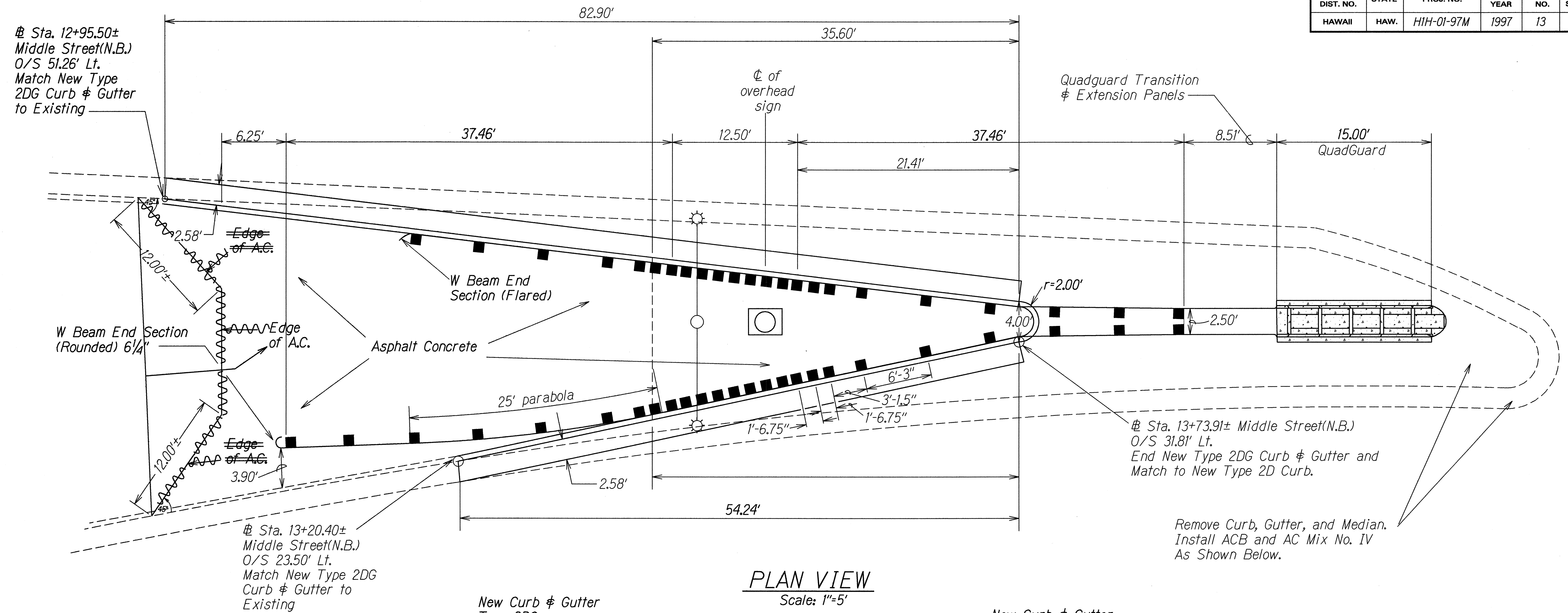


FED. ROAD DIST. NO.	STATE	PROJ. NO.	FISCAL YEAR	SHEET NO.	TOTAL SHEETS
HAWAII	HAW.	HIH-01-97M	1997	13	26

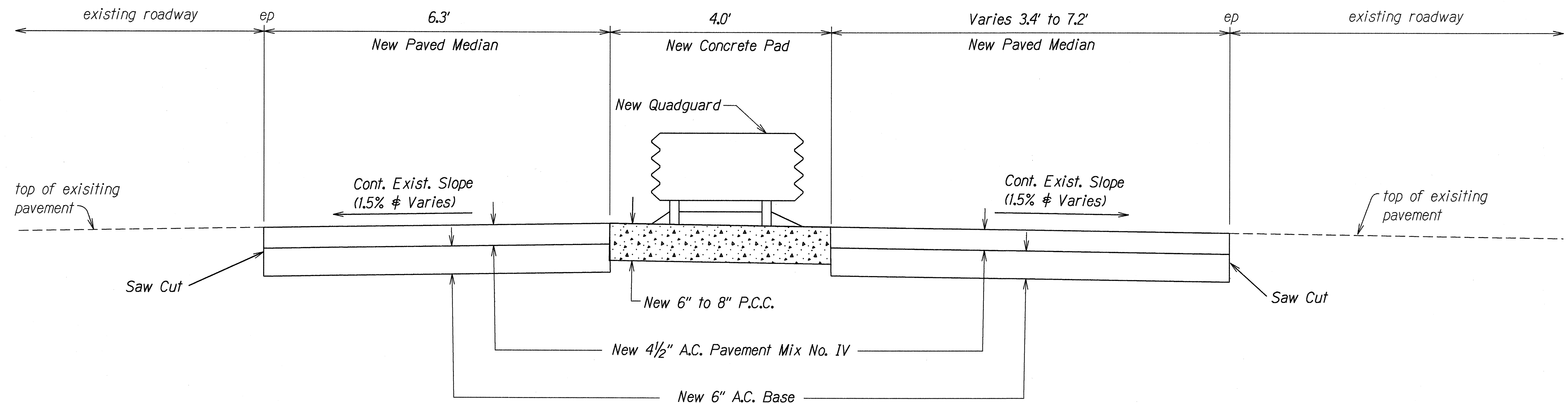


LEGEND FOR AS-BUILT POSTINGS	
	Squiggly line for as-built deletion
	Double line for as-built deletion
	Text for as-built posting

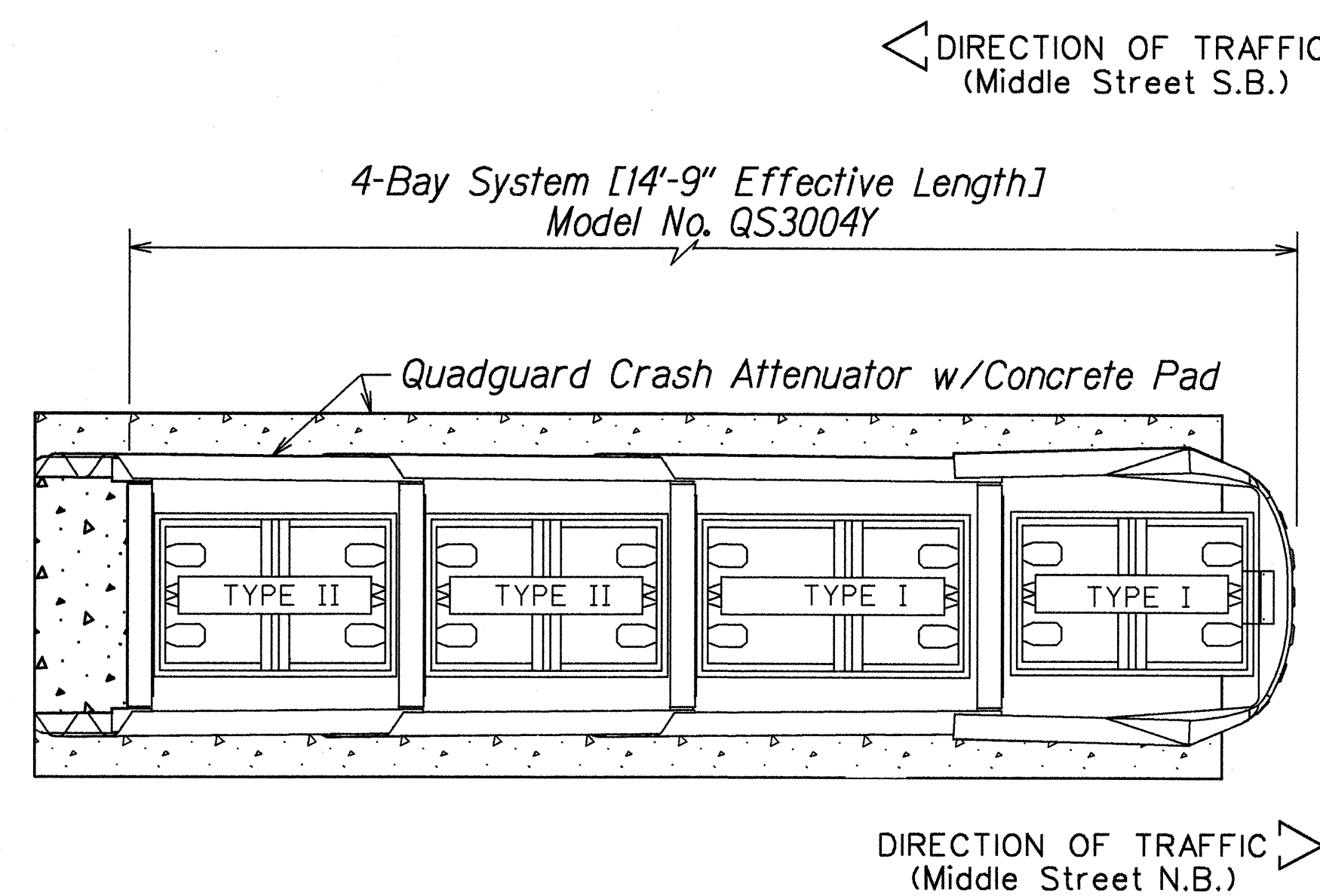
STATE OF HAWAII  
DEPARTMENT OF TRANSPORTATION  
HIGHWAYS DIVISION  
**MEDIAN, GUARDRAIL & QUADGUARD**  
**RECONSTRUCTION DETAIL**  
INTERSTATE ROUTE H-1  
AND MIDDLE STREET RESURFACING  
North King St. to Kamehameha Hwy.  
Project No. HIH-01-97M  
Scale: 1"=5' Date: May, 1997  
SHEET No. 1 OF 2 SHEETS

"AS-BUILT"

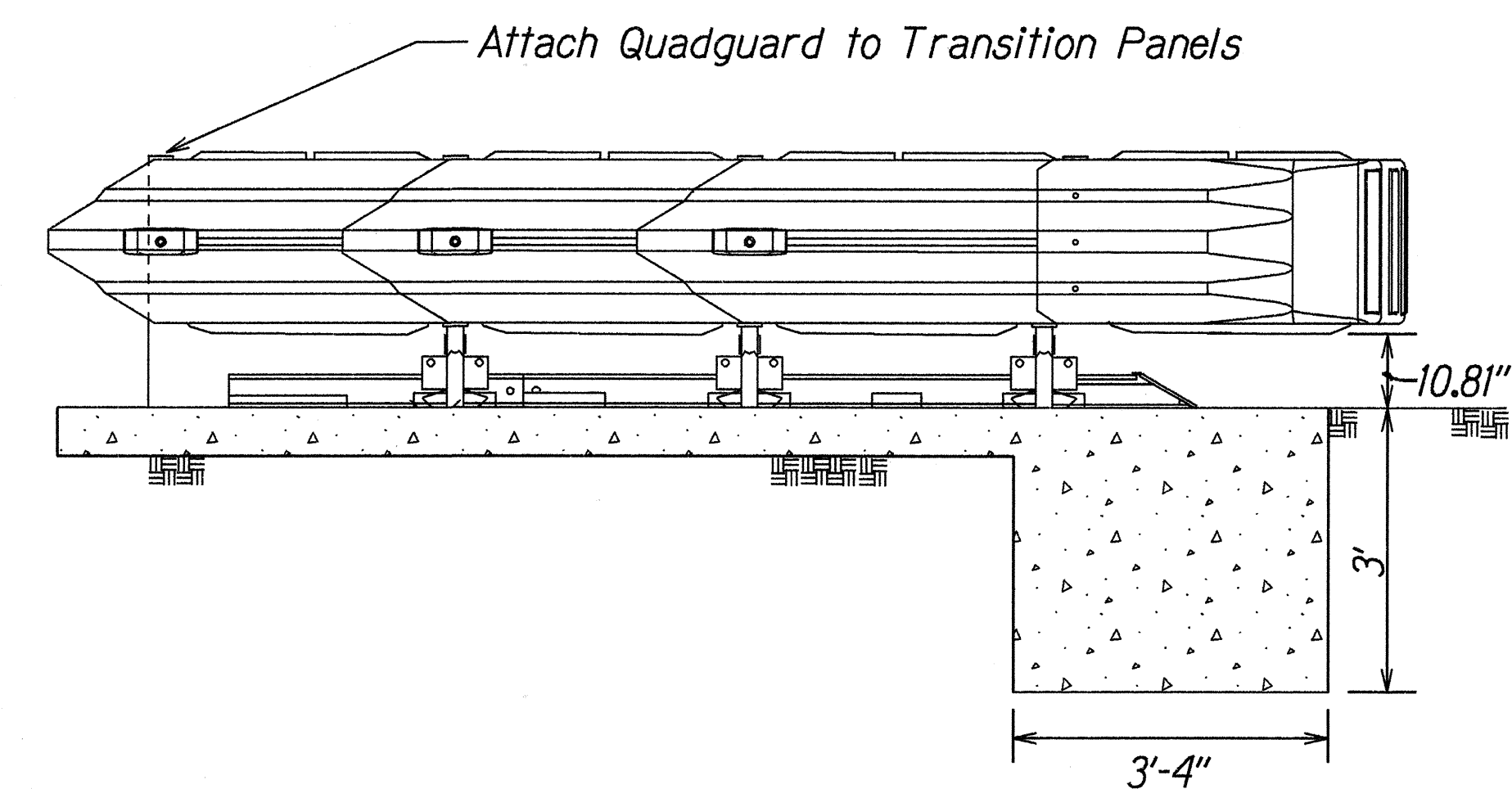
FED. ROAD DIST. NO.	STATE	PROJ. NO.	FISCAL YEAR	SHEET NO.	TOTAL SHEETS
HAWAII	HAW.	HIH-01-97M	1997	14	26



**TYPICAL SECTION - MIDDLE STREET QUADGUARD**  
**N.B. ± STA. 13+81± TO N.B. ± STA. 13+96±**  
 Scale: 1"=5'



**PLAN VIEW**



**ELEVATION VIEW**

**QUADGUARD DETAILS**  
 Not To Scale

STATE OF HAWAII  
 DEPARTMENT OF TRANSPORTATION  
 HIGHWAYS DIVISION  
**MEDIAN, GUARDRAIL & QUADGUARD**  
**RECONSTRUCTION DETAIL**  
 INTERSTATE ROUTE H-1  
 AND MIDDLE STREET RESURFACING  
 North King St. to Kamehameha Hwy.  
 Project No. HIH-01-97M  
 Scale: As Shown Date: May, 1997  
 SHEET No. 2 OF 2 SHEETS

ORIGINAL PLAN	SURVEY PLOTTED BY	DATE
NOTE BOOK	DRAWN BY J. Kawano	1-5-2/3
DESIGNED BY	CHECKED BY	
REVIEWED BY		
APPROVED BY		