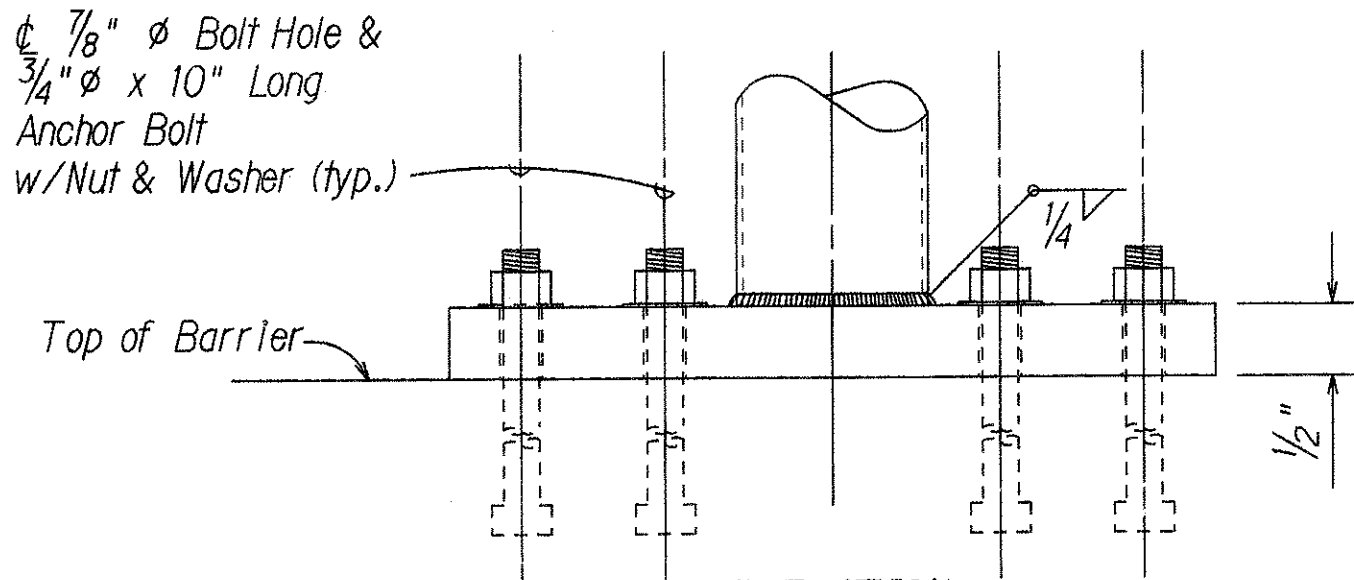
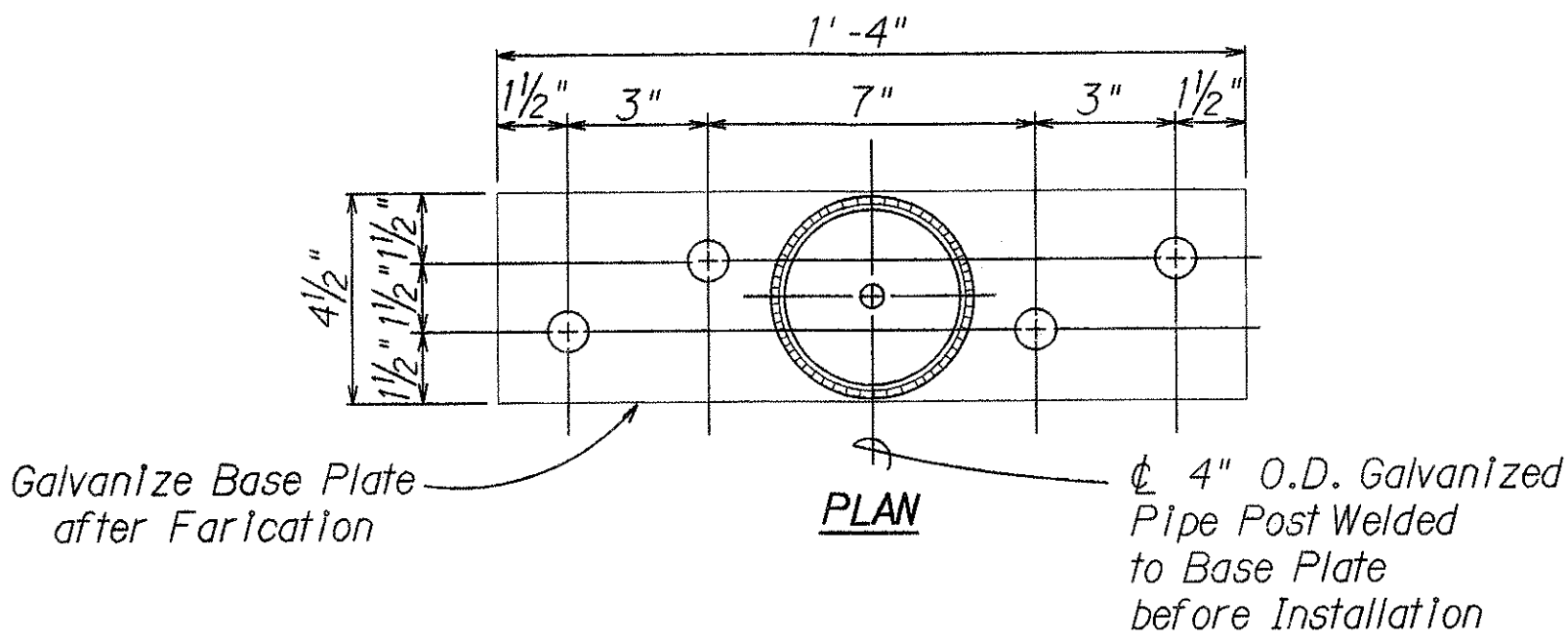
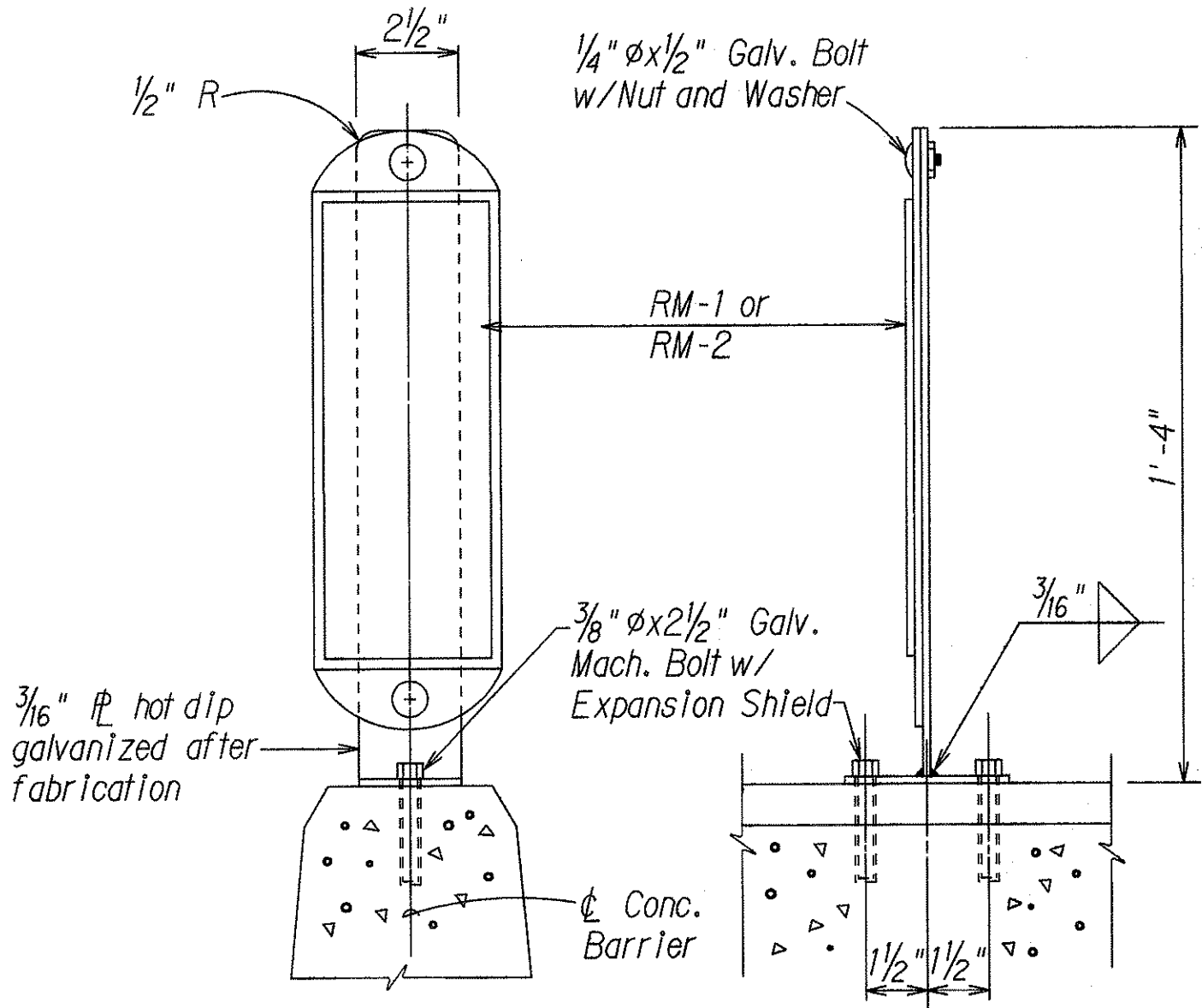


FED. ROAD DIST. NO.	STATE	FED. AID PROJ. NO.	FISCAL YEAR	SHEET NO.	TOTAL SHEETS
HAWAII	HAW.	IR-H1-1(215)	1992	16	44



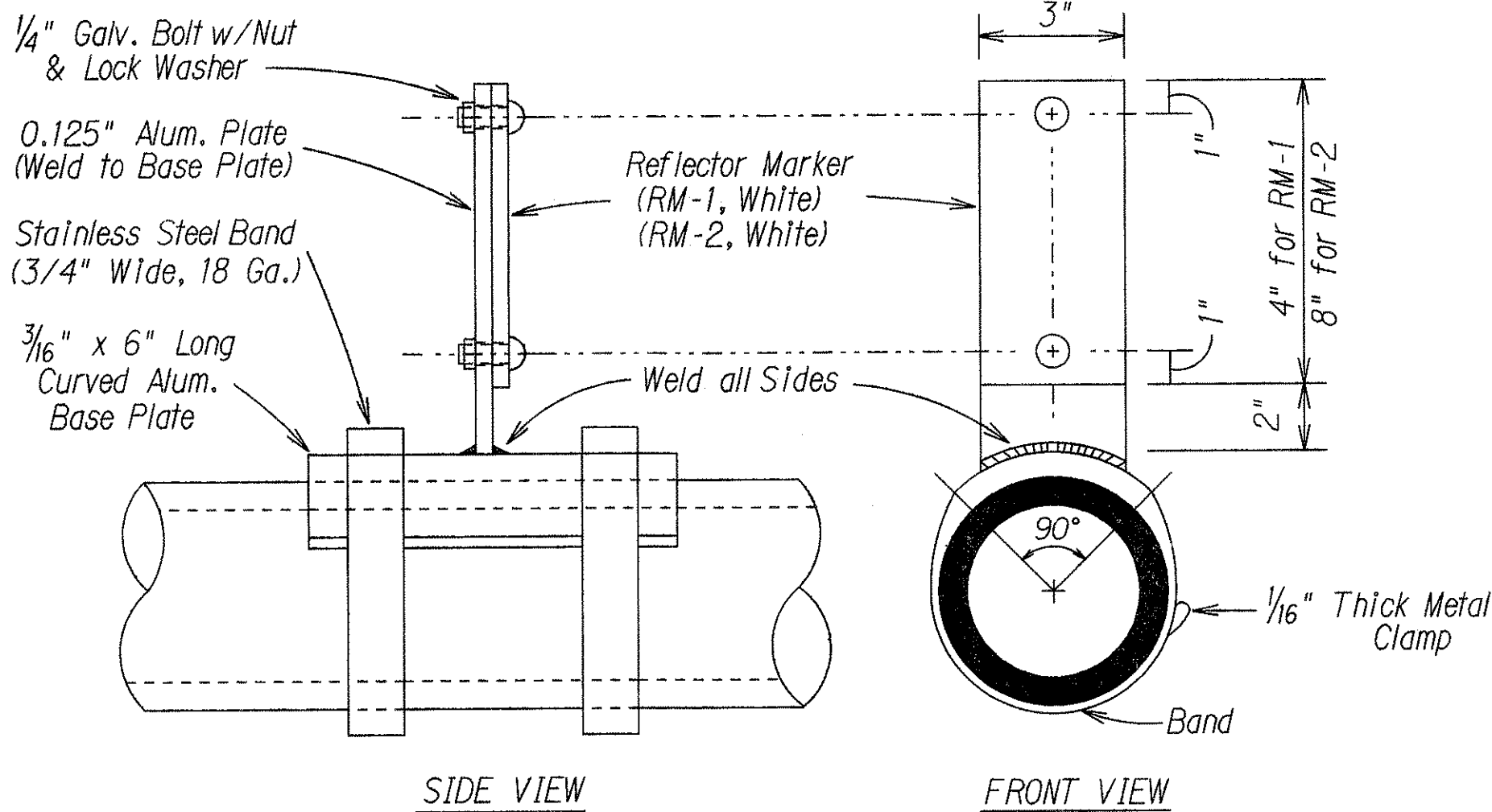
**SIGN POST
BASE PLATE DETAIL**
Not to Scale



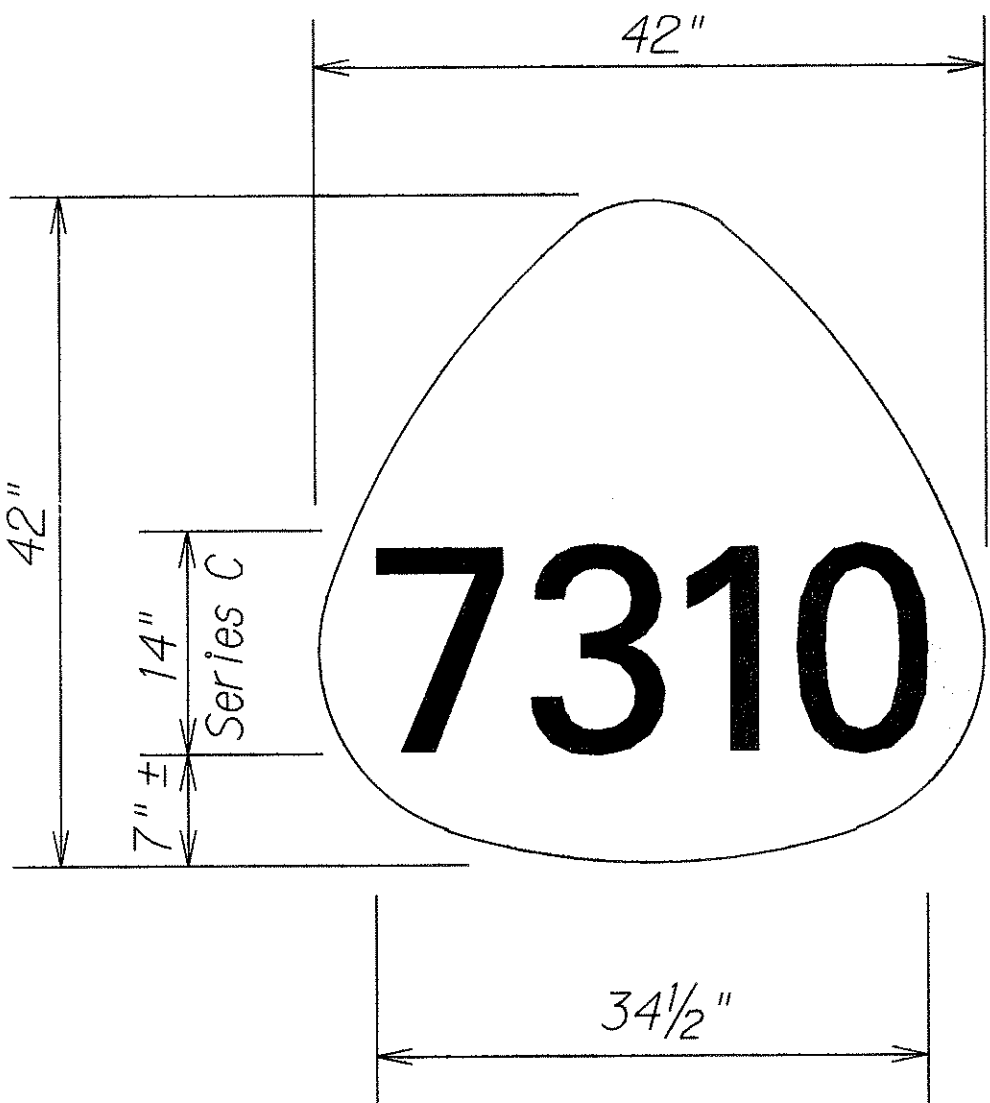
**DETAILS OF REFLECTOR MARKER
MOUNTED ON CONCRETE BARRIER**
Not to scale

NOTE:

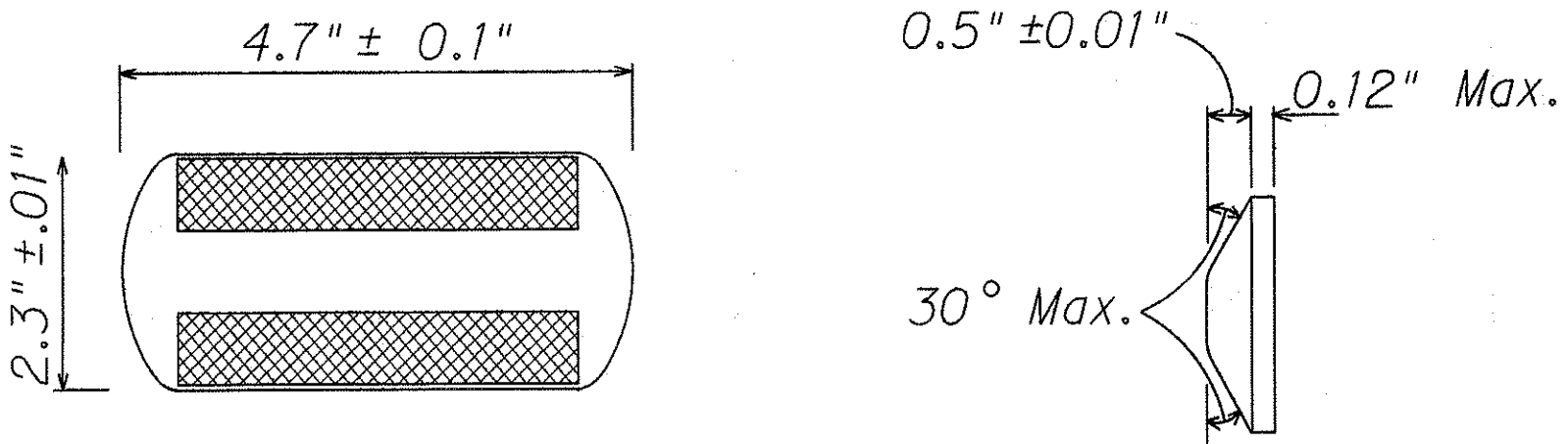
All holes resulting from the removal of existing bolts mounted on existing structures shall be plugged with mortar. Any damaged to the existing structure caused by the Contractor's operation shall be repaired by the Contractor at his expense and to the satisfaction of the Engineer. This work shall be considered incidental to installing reflector markers on Concrete Barrier.



**DETAILS OF BRACKETS FOR REFLECTOR MARKERS
MOUNTED ON BRIDGE RAILINGS**
Not to Scale



**STATE ROUTE MARKER
FOR GUIDE SIGNS**
Not to Scale

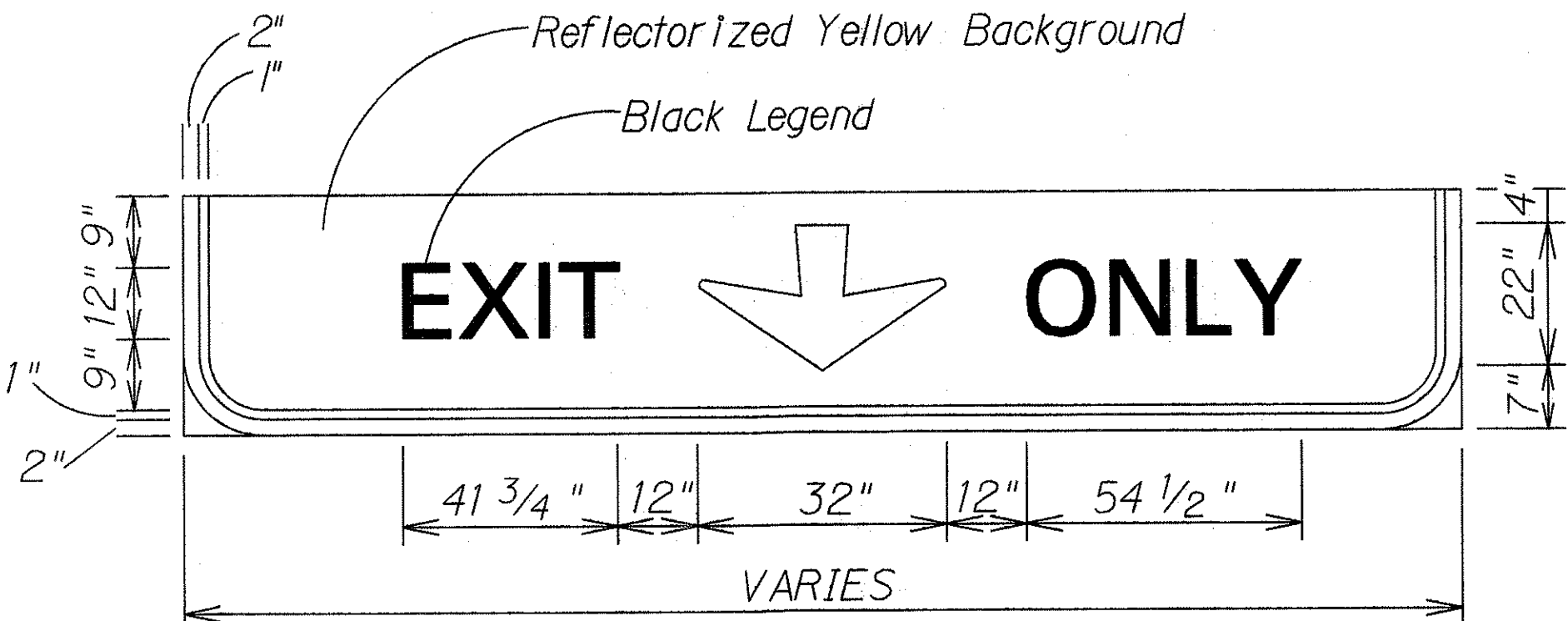


TYPE CL
Red-Clear Reflective Marker

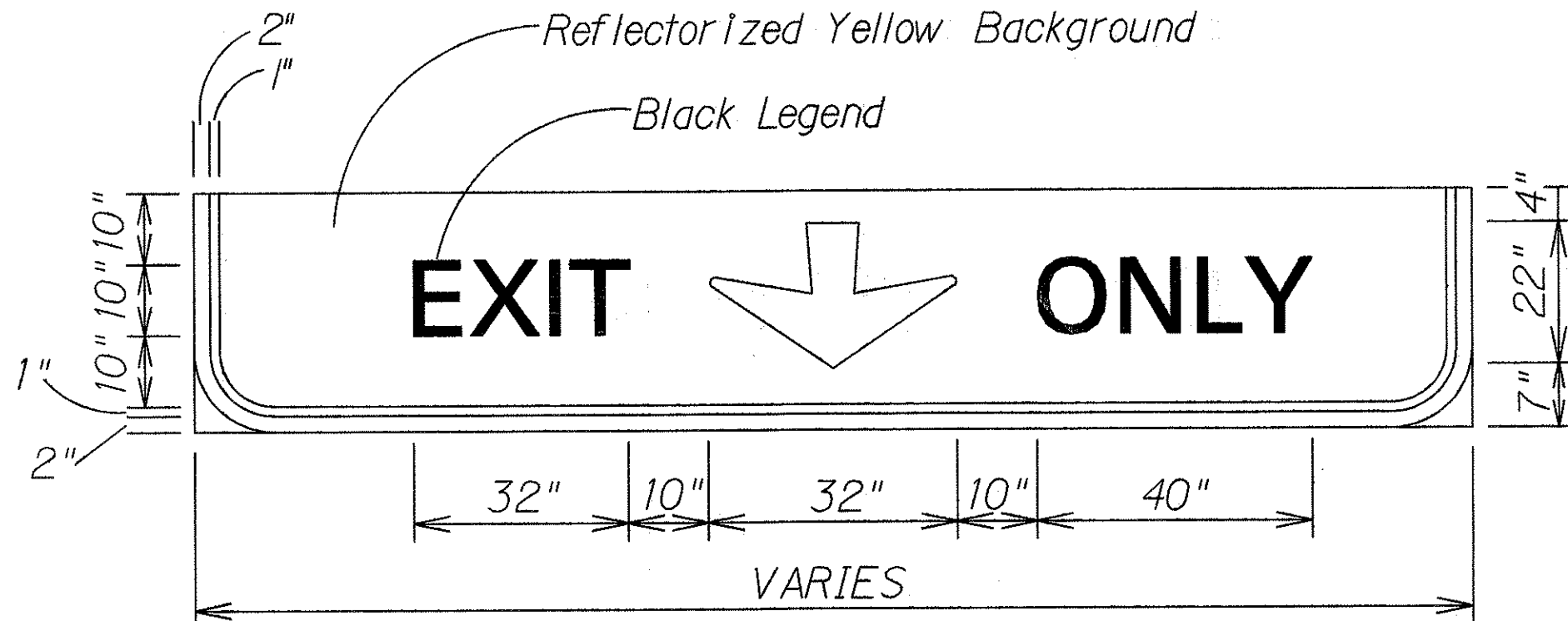
TYPE DL
Two-Way Yellow Reflective Marker

TYPE HL
One-Way Yellow Reflective Marker

RAISED PAVEMENT MARKER DETAILS
Not to Scale



**TYPICAL EXIT ONLY PANEL
12" LETTERS**
Not to Scale



**TYPICAL EXIT ONLY PANEL
10" LETTERS**
Not to Scale

STATE OF HAWAII

DEPARTMENT OF TRANSPORTATION

HIGHWAYS DIVISION

MISCELLANEOUS DETAILS

INTERSTATE ROUTE H-1

PAVEMENT MARKINGS, ROADWAY

DELINEATION & REFURBISH SIGNS

Palala'i I.C. to Aiea Ave.

F.A.I. Project No. IR-H1-1(215)

Scale: As Noted Date: March 1992

SHEET No. 1 OF 1 SHEETS